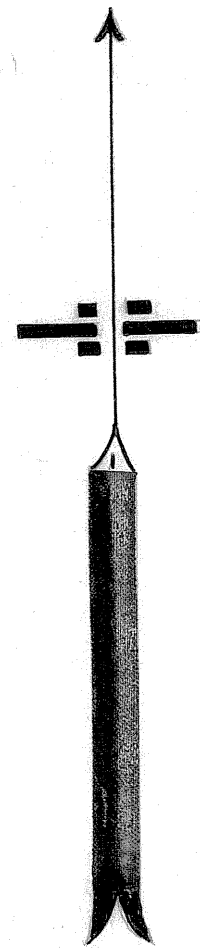


WEST TEMPLE.

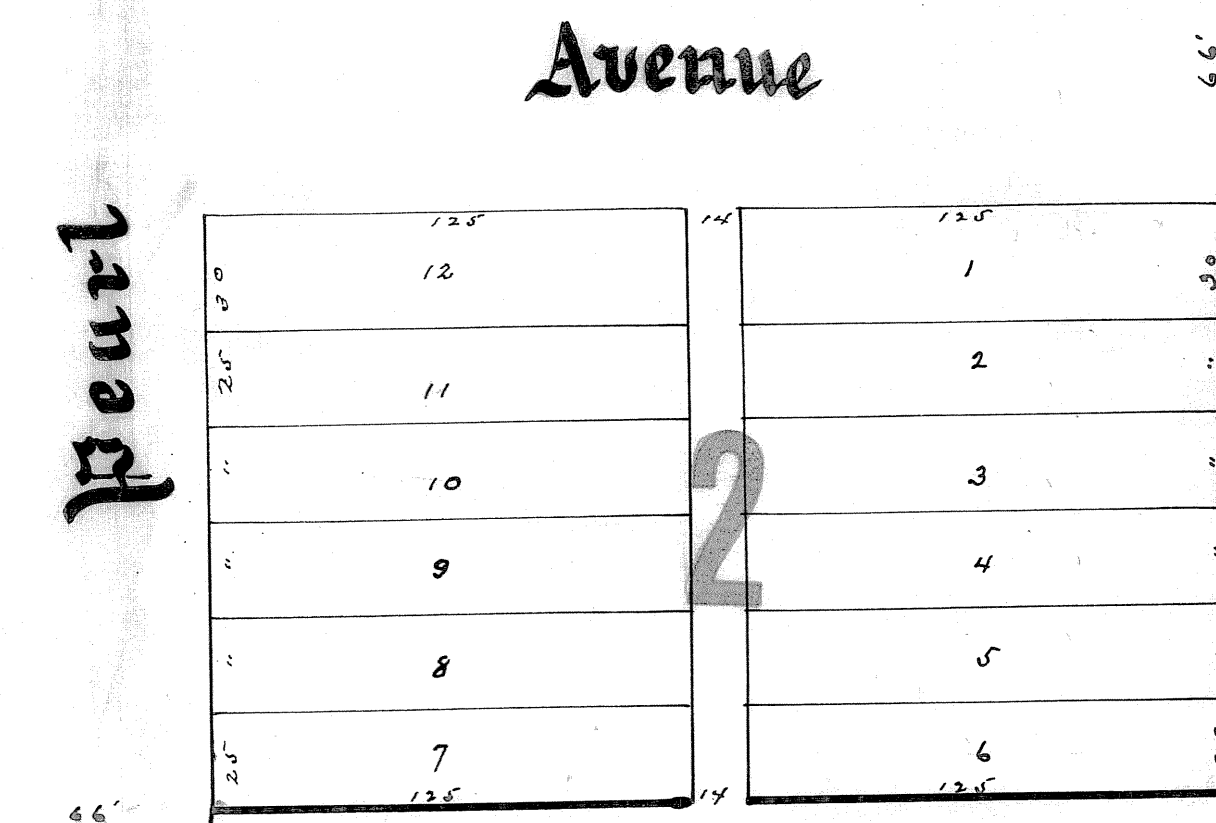
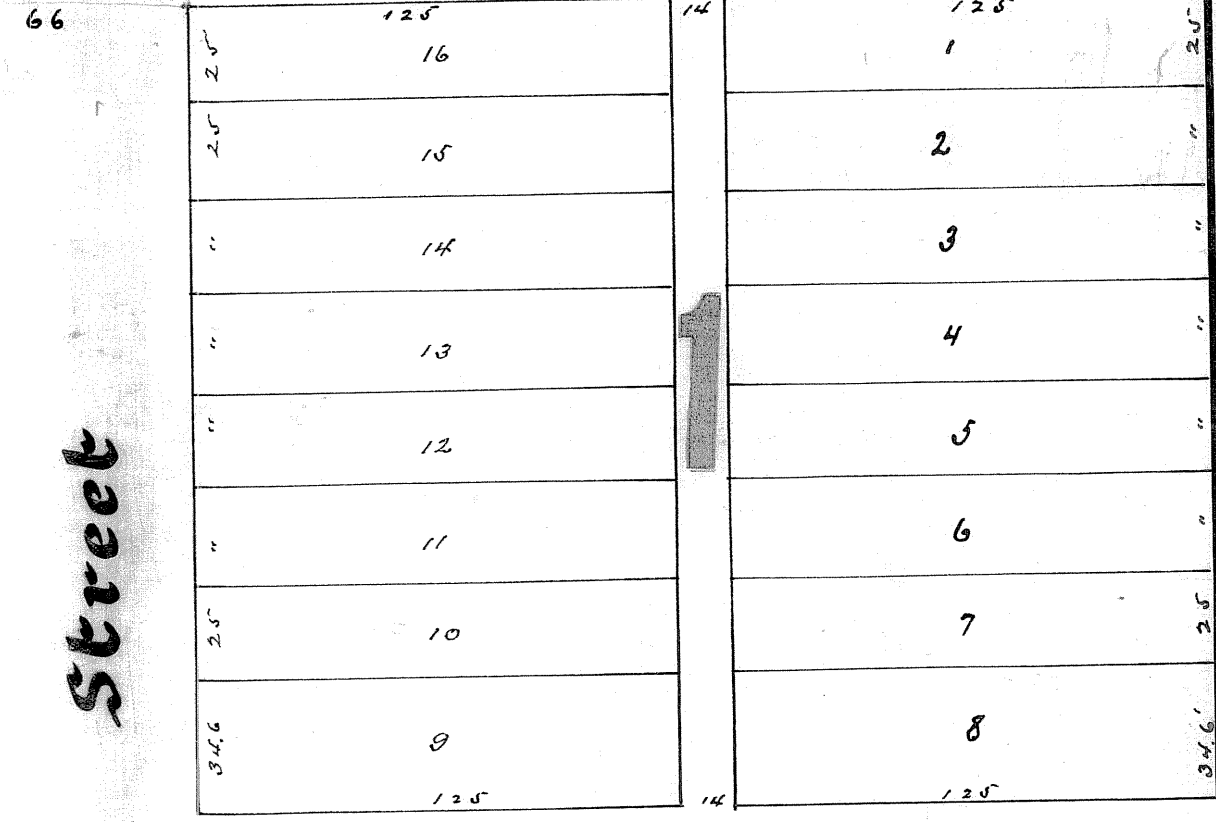
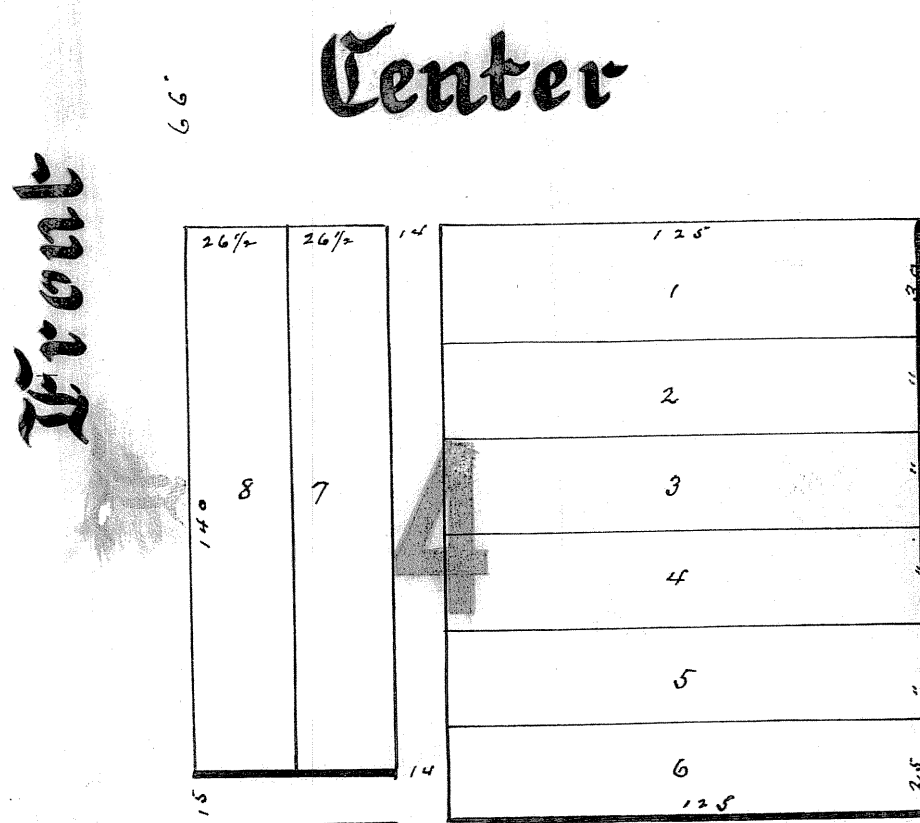
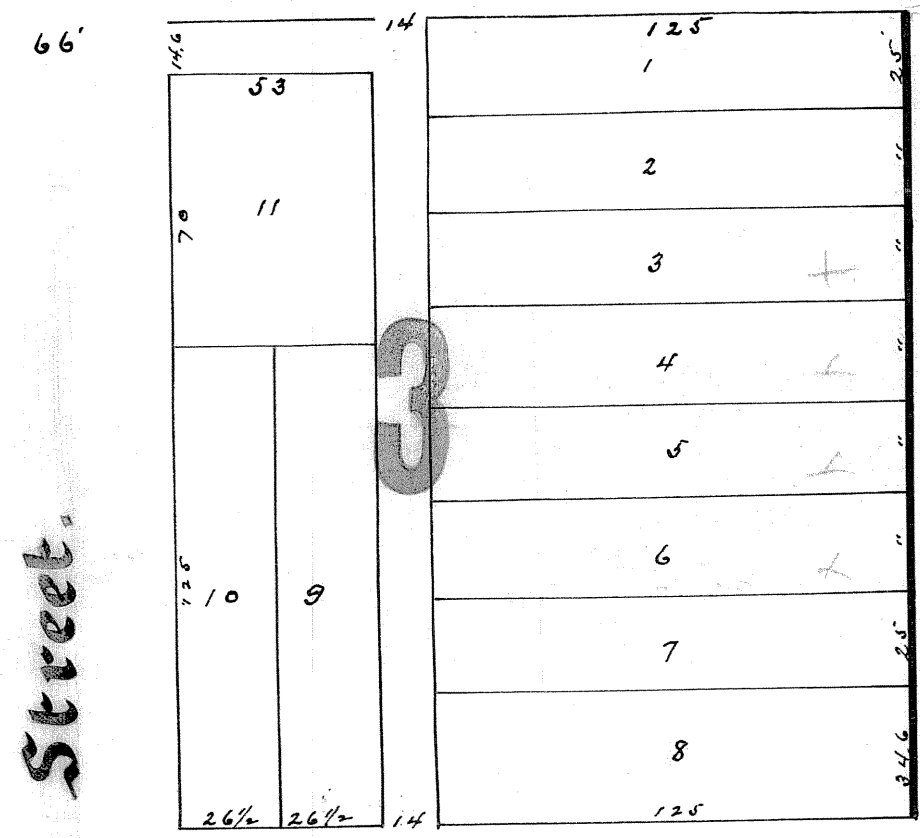
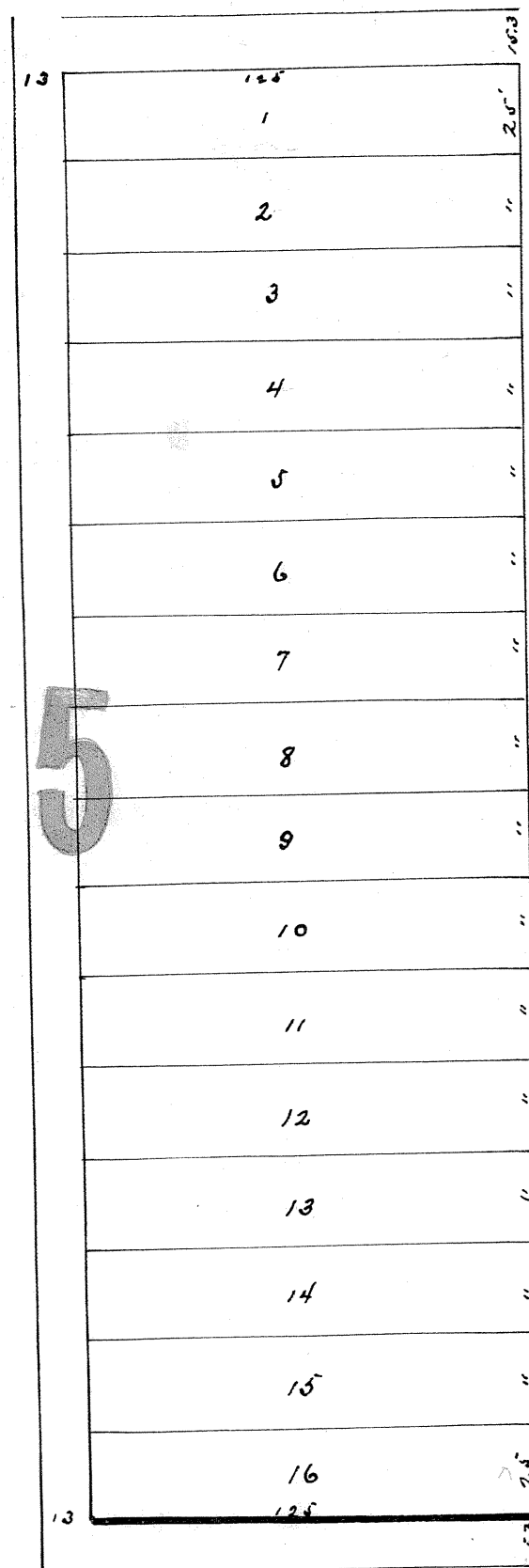
APPROPRIATION.

759 feet. NE cor. Sec. 13-15-17.

Being all of lot 14 and the north half of lot 15 Block 10, 5 were plat "A" Big Field Survey



North Central Railway



I hereby certify that this is a correct plat of West Temple Subdivision as surveyed and plotted by me.

C. D. Pratt, C.E.
 Approved Nov. 18th 1889
 G. M. Bartlett,
 Probate Judge.

#11870.
 Filed November 18th 1889
 at 11:45 a.m.
 George W. Cannon
 Recorder State Lake County, Utah.

B-80

Scale 50 Feet to one inch.