

9084136

9184136  
09/28/2004 03:28 PM \$133.00  
Book - 9042 Pg - 3079 A-C  
GARY W. OTT  
RECORDER, SALT LAKE COUNTY, UTAH  
PARSONS, BEBLE & LATIMER  
201 S MAIN ST STE.1800  
SLC UT 84145-0898  
BY: ZJM, DEPUTY - WI X.P.

4P

Name: SECOND EXTENDED PLAT OF THE  
AMENDED AND RESTATED  
CREEK ROAD OFFICE CONDO  
22-29-42

Desc: 22-29-432-029,-028,-033,-034

Fee: \$133.00

# of Pages: THREE

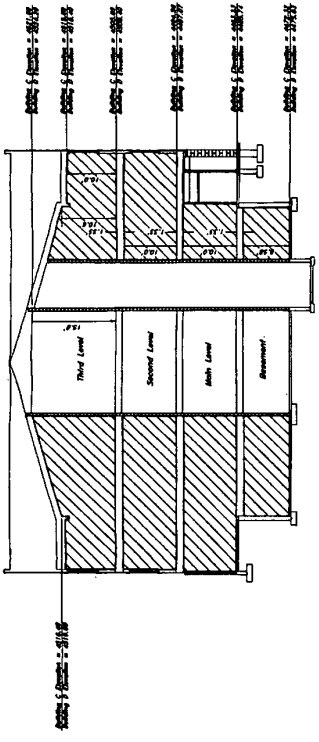
# PLAT

SEE ONLINE PLATS AT  
[HTTP://REC.CO.SLC.UT.US/](http://rec.co.slc.ut.us/)

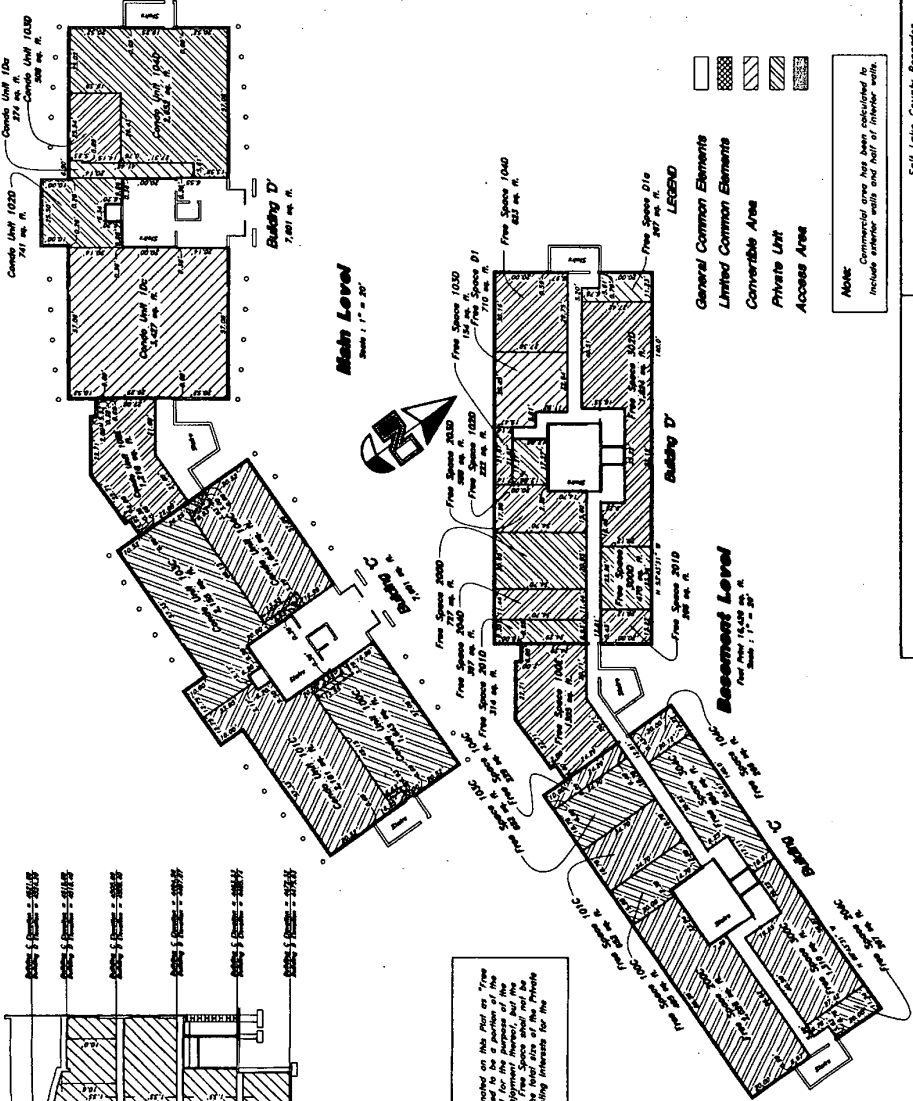
BK 9042 PG 3079



**Second Extended Plat of the  
Amended and Restated Condominium Plat of  
Creek Road Condominiums**  
A Part of the Northeast and Southeast Quarters of Section 29, T2S, R1E, S18E, U.S. Survey  
Salt Lake County, Utah



**Note:** The areas designated on this plat as "Free Space" shall be deemed to be a portion of the common area of the project. The owner of each unit shall be responsible for the maintenance, care and enjoyment thereof, and the square footage of the Free Space shall not be included in the square footage of the unit or determining utility interests for the Private Unit.



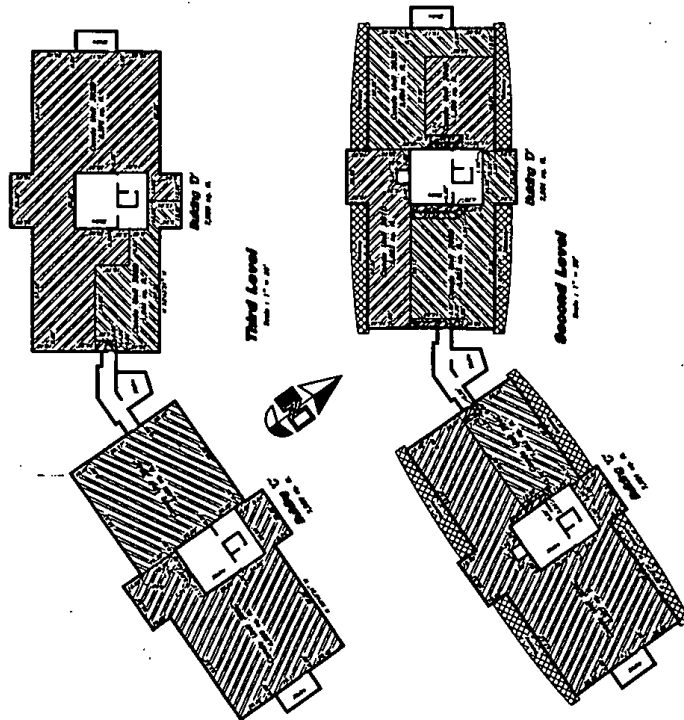
**Soil Lake County Recorder**  
STATE OF UTAH, COUNTY OF SALT LAKE, RECORDED AND FILED AT THE REQUEST OF CHAMBERLAIN, MOORE & LATIMER  
DATE SEPT. 24, 2009 TIME 2:58 PM BOOK 2004 P. 262 PAGE 542  
BY AMY M. TIGHE COUNTY CLERK  
SALT LAKE COUNTY RECORDER

**Soil Lake County Recorder**  
This Record of Survey Map Complies with Soild City Zoning Ordinance Requirements.  
Christy J. Dowd Zoning Administrator

**Second Extended Plat of the Amended and Restated Condominium Plat of Creek Road Office Condominiums**  
A Part of the Northeast and Southeast Quarters of Section 29, T2S, R1E, S18E, U.S. Survey  
Salt Lake County, Utah

**GREAT BASIN ENGINEERING - SOUTH**  
CONSULTING ENGINEERS AND LAND SURVEYORS  
2010 North Redwood Road, P.O. Box 18747  
Salt Lake City, Utah 84118  
Salt Lake County, Utah 84118  
Phone: (801) 487-7288 Fax: (801) 487-8531

**Second Extended Part of the Amended and Restated Condominium Plat of Creek Road Condominiums**  
 A Part of the Amended and Restated Condominium Plat of Creek Road Condominiums, Vol. 726, File No. 2004-282, State of Ohio, County of Lucas



**LEGEND**

- General Common Elements
- Limited Common Elements
- Convertible Area
- Private Unit
- Access Area

**Note:** Units shown with this hatching are subject to the provisions of the Condominium Act and the Declaration of Condominium.

Soil Lake County Recorder  
 STATE OF OHIO, COUNTY OF LUCAS, RECORDED AND FILED AT THE  
 OFFICE OF THE COUNTY RECORDER, LUCAS COUNTY, OHIO  
 ON 08/15/2004 THE 15th DAY OF AUGUST 2004  
 BY: JAMES H. JONES, COUNTY RECORDER  
 JAMES H. JONES  
 COUNTY RECORDER  
 100 N. MARKET ST., SUITE 100  
 TOLEDO, OHIO 44002

**Second Extended Part of the Amended and Restated Condominium Plat of Creek Road Condominiums**  
 A Part of the Amended and Restated Condominium Plat of Creek Road Condominiums, Vol. 726, File No. 2004-282, State of Ohio, County of Lucas  
 GREAT BASIN ENGINEERING - SOUTH  
 CONSULTING ENGINEERS AND LAND SURVEYORS  
 2010 and 2011 State Approved P.E. No. 1242  
 10000 W. 10th Avenue, Suite 100  
 Westminster, Colorado 80234  
 303.426.1111  
 www.gbeng.com

23 Aug. 2004  
 3

2004-P-282