

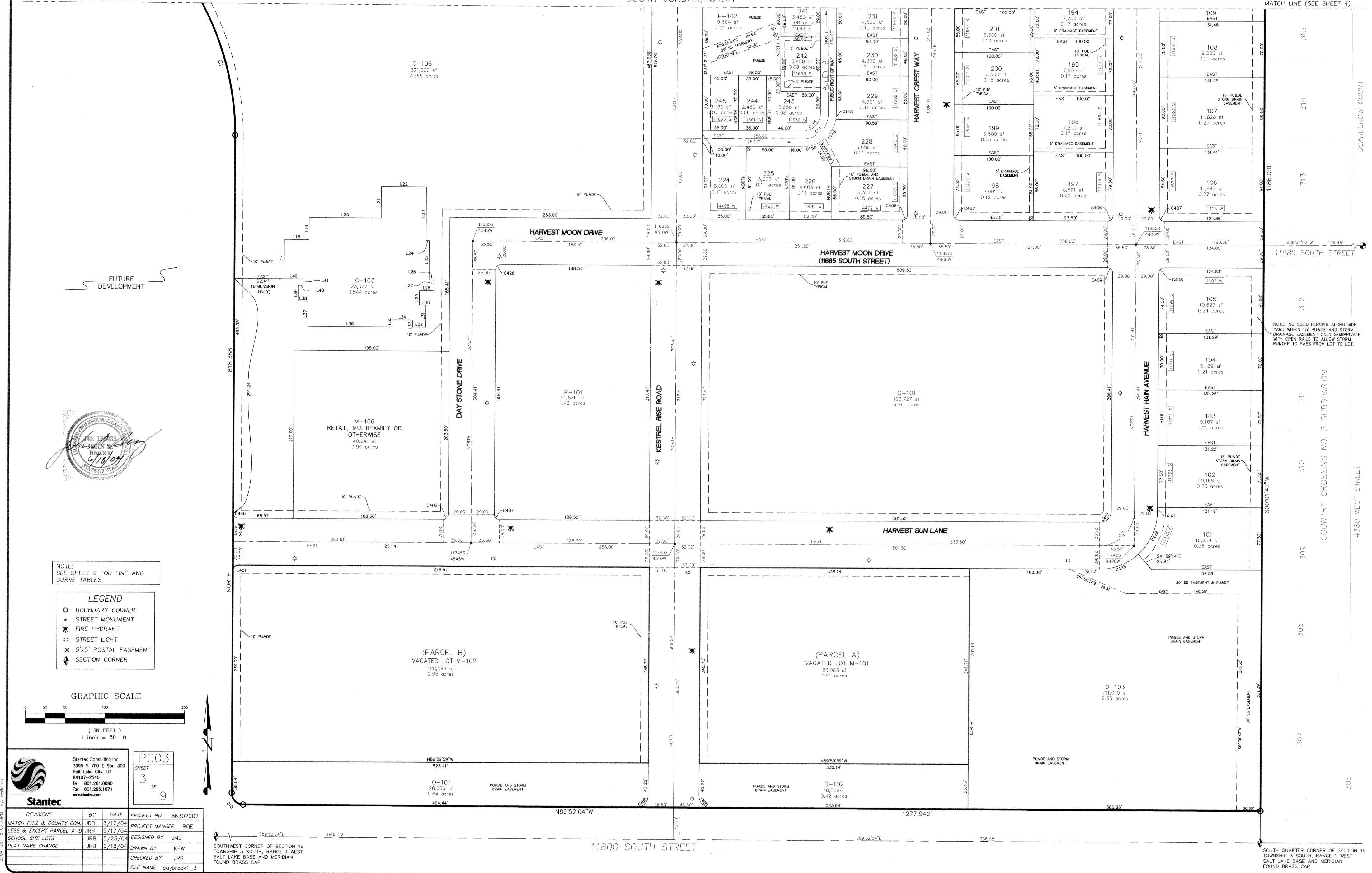
AMENDED KENNECOTT DAYBREAK PHASE 1 SUBDIVISION

VACATING LOTS M-101, M-102, M-103 & M-105 & AMENDING LOTS 321, C-102, O-101, O-102, O-104, O-108, O-109, O-110

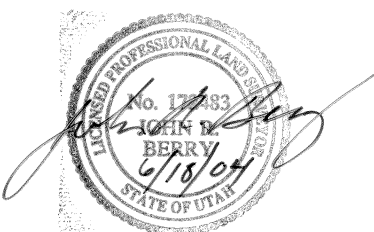
SOUTH JORDAN, UTAH

MATCH LINE (SEE SHEET 4)

MATCH LINE (SEE SHEET 4)

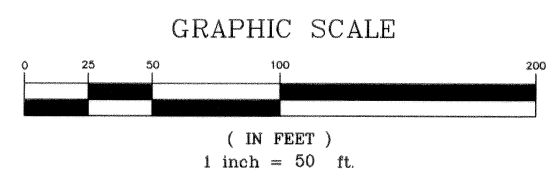


FUTURE DEVELOPMENT



NOTE: SEE SHEET 9 FOR LINE AND CURVE TABLES

- LEGEND**
- BOUNDARY CORNER
 - STREET MONUMENT
 - ★ FIRE HYDRANT
 - ☆ STREET LIGHT
 - ⊠ 5'x5' POSTAL EASEMENT
 - ⬇ SECTION CORNER



Stantec Consulting Inc.
3995 S 700 E Ste. 300
Salt Lake City, UT
84107-2540
Tel. 801.281.0000
Fax. 801.286.1871
www.stantec.com

P003
SHEET
3
OF
9

REVISIONS	BY	DATE	PROJECT NO.
MATCH P1,2 & COUNTY COM. LESS & EXCEPT PARCEL A-D	JRB	5/12/04	86.302002
SCHOOL SITE LOTS	JRB	5/23/04	
PLAT NAME CHANGE	JRB	6/18/04	

PROJECT MANAGER	RQE
DESIGNED BY	JMD
DRAWN BY	KFW
CHECKED BY	JRB
FILE NAME	daybreak1_3

X:\Projects\11800 SOUTH STREET\DWG\11800 SOUTH STREET\11800 SOUTH STREET.dwg

REVISIONS	BY	DATE	PROJECT NO.
MATCH PH.2 & COUNTY COM.	JRB	5/12/04	86302002
LESS & EXCEPT PARCEL A-D	JRB	5/17/04	
SCHOOL SITE LOTS	JRB	5/23/04	
PLAT NAME CHANGE	JRB	5/19/04	

Stantec Consulting Inc.
3945 S 700 E Ste. 300
Salt Lake City, UT
84107-2540
Tel. 801.281.0090
Fax. 801.286.1871
www.stantec.com

P004
SHEET
4
of
9

NOTE:
SEE SHEET 9 FOR CURVE TABLE

LEGEND	
○	BOUNDARY CORNER
●	STREET MONUMENT
✱	FIRE HYDRANT
◊	STREET LIGHT
◻	5'x5' POSTAL EASEMENT
◄	SECTION CORNER



AMENDED KENNECOTT DAYBREAK PHASE 1 SUBDIVISION

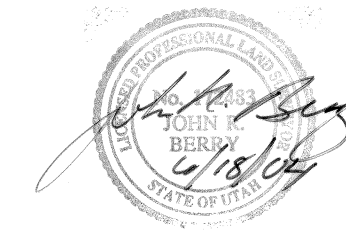
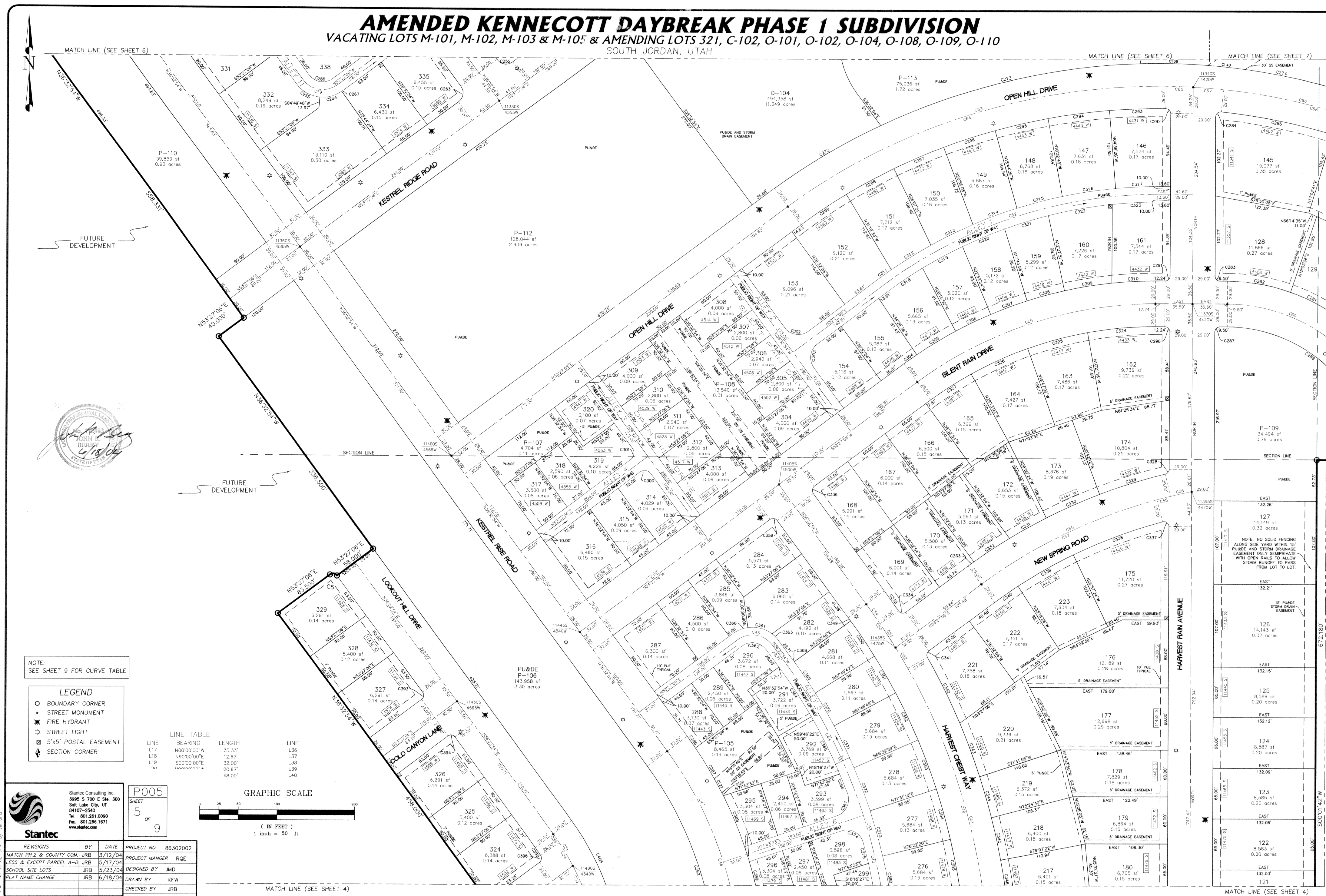
VACATING LOTS M-101, M-102, M-103 & M-105 & AMENDING LOTS 321, C-102, O-101, O-102, O-104, O-108, O-109, O-110 SOUTH JORDAN, UTAH

GRAPHIC SCALE
(IN FEET)
1 inch = 50 ft.

\\snp\apps\gis\gis\2004\020\002\DRAWINGS\PLATS\daybreak1-4.dwg

AMENDED KENNECOTT DAYBREAK PHASE 1 SUBDIVISION

VACATING LOTS M-101, M-102, M-103 & M-105 & AMENDING LOTS 321, C-102, O-101, O-102, O-104, O-108, O-109, O-110
SOUTH JORDAN, UTAH

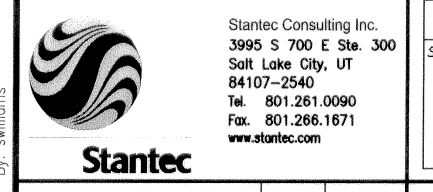
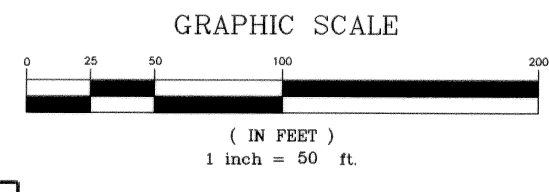


NOTE:
SEE SHEET 9 FOR CURVE TABLE

- LEGEND**
- BOUNDARY CORNER
 - STREET MONUMENT
 - ★ FIRE HYDRANT
 - ☆ STREET LIGHT
 - ⊞ 5'x5' POSTAL EASEMENT
 - ⬢ SECTION CORNER

LINE TABLE

LINE	BEARING	LENGTH	LINE
L17	N00°00'00"W	75.33'	L36
L18	N90°00'00"E	12.67'	L37
L19	S00°00'00"E	32.00'	L38
L20	S00°00'00"E	20.87'	L39
		48.00'	L40



REVISIONS	BY	DATE	PROJECT NO.
MATCH PH.2 & COUNTY COM.	JRB	3/12/04	86.302002
LESS & EXCEPT PARCEL A-D	JRB	5/17/04	
SCHOOL SITE LOTS	JRB	5/23/04	
PLAT NAME CHANGE	JRB	6/18/04	

PROJECT MANAGER	RQE
DESIGNED BY	JMD
DRAWN BY	KFW
CHECKED BY	JRB
FILE NAME	daybreak1_5

U:\SOUTH JORDAN\SUBDIVISIONS\AMENDED KENNECOTT DAYBREAK PHASE 1\Subarea1-5.dwg
 2004/06/18 10:20:10 AM
 JOHN BERNI

NOTE: NO SOLID FENCING
ALONG SIDE YARD WITHIN 15'
PLUAS AND STORM DRAINAGE
EASEMENT ORAL SEMIPRIVATE
WITH OPEN RAINOFF TO PASS
FROM LOT TO LOT.

REVISIONS	BY	DATE	PROJECT NO.
MATCH PH 2 & COUNTY COM	JRB	5/12/04	B6302002
LESS & EXCEPT PARCEL A-D	JRB	5/17/04	PROJECT MANGER RQE
SCHOOL SITE LOTS	JRB	5/23/04	DESIGNED BY JMD
PLAT NAME CHANGE	JRB	6/18/04	DRAWN BY KFW/TEJ
			CHECKED BY JRB
			FILE NAME daybreak1_7

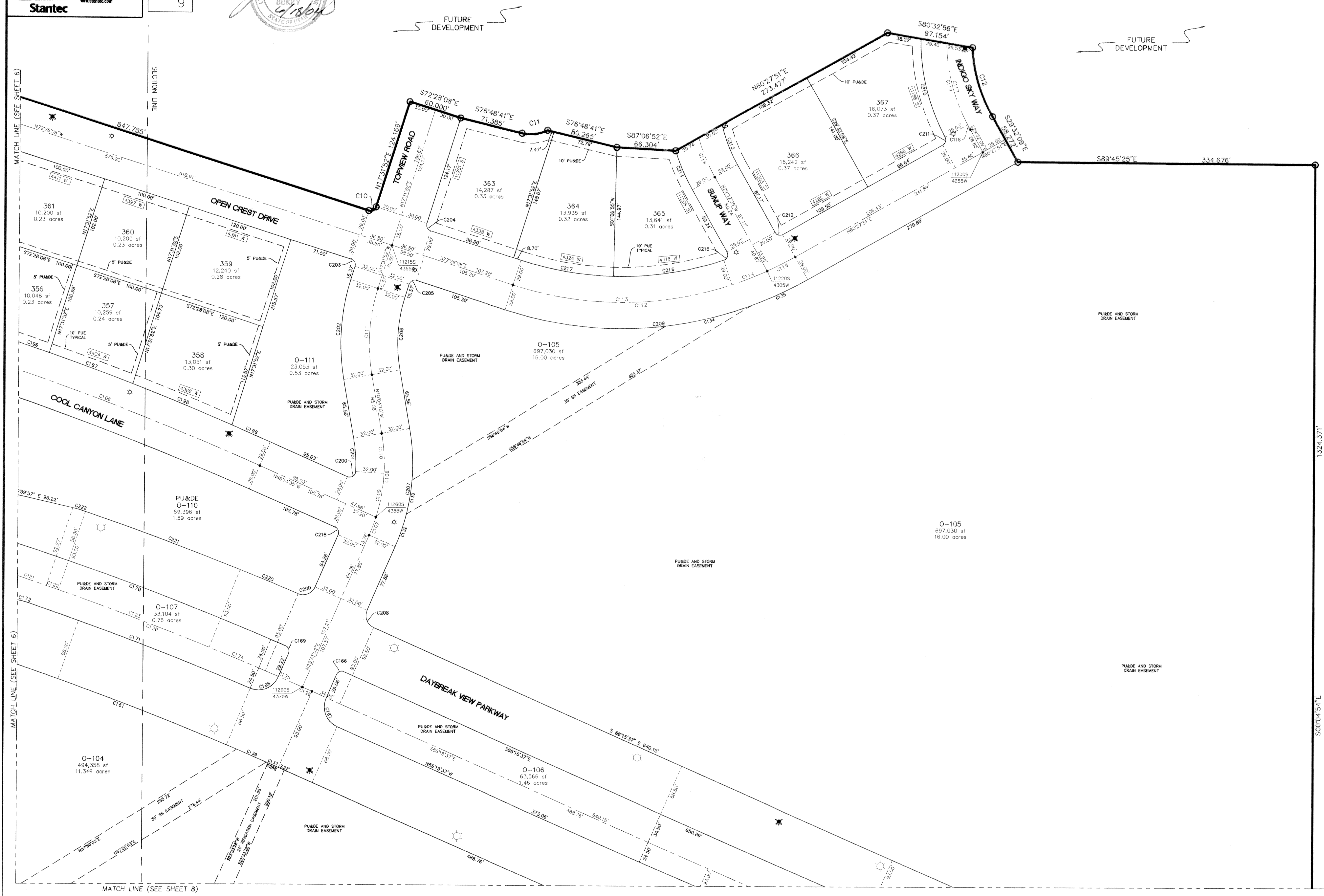
Stantec Consulting Inc.
3900 S 700 E Ste. 300
Salt Lake City, UT
84107-2540
Tel. 801.261.0090
Fax. 801.266.1671
www.stantec.com

P007
SHEET
7
OF
9



AMENDED KENNECOTT DAYBREAK PHASE 1 SUBDIVISION

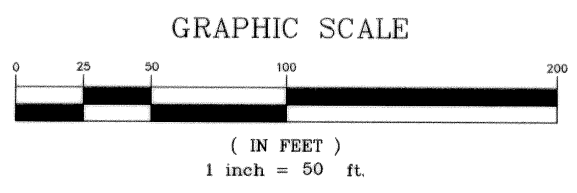
VACATING LOTS M-101, M-102, M-103 & M-105 & AMENDING LOTS 321, C-102, O-101, O-102, O-104, O-108, O-109, O-110
SOUTH JORDAN, UTAH



KEY BANK OF UTAH
& WILLIAM WRAY
27-19-200-003

NOTE:
SEE SHEET 9 FOR CURVE TABLE

- LEGEND**
- BOUNDARY CORNER
 - STREET MONUMENT
 - ⊛ FIRE HYDRANT
 - ⊙ STREET LIGHT
 - ⊞ 5'x5' POSTAL EASEMENT
 - ⬇ SECTION CORNER

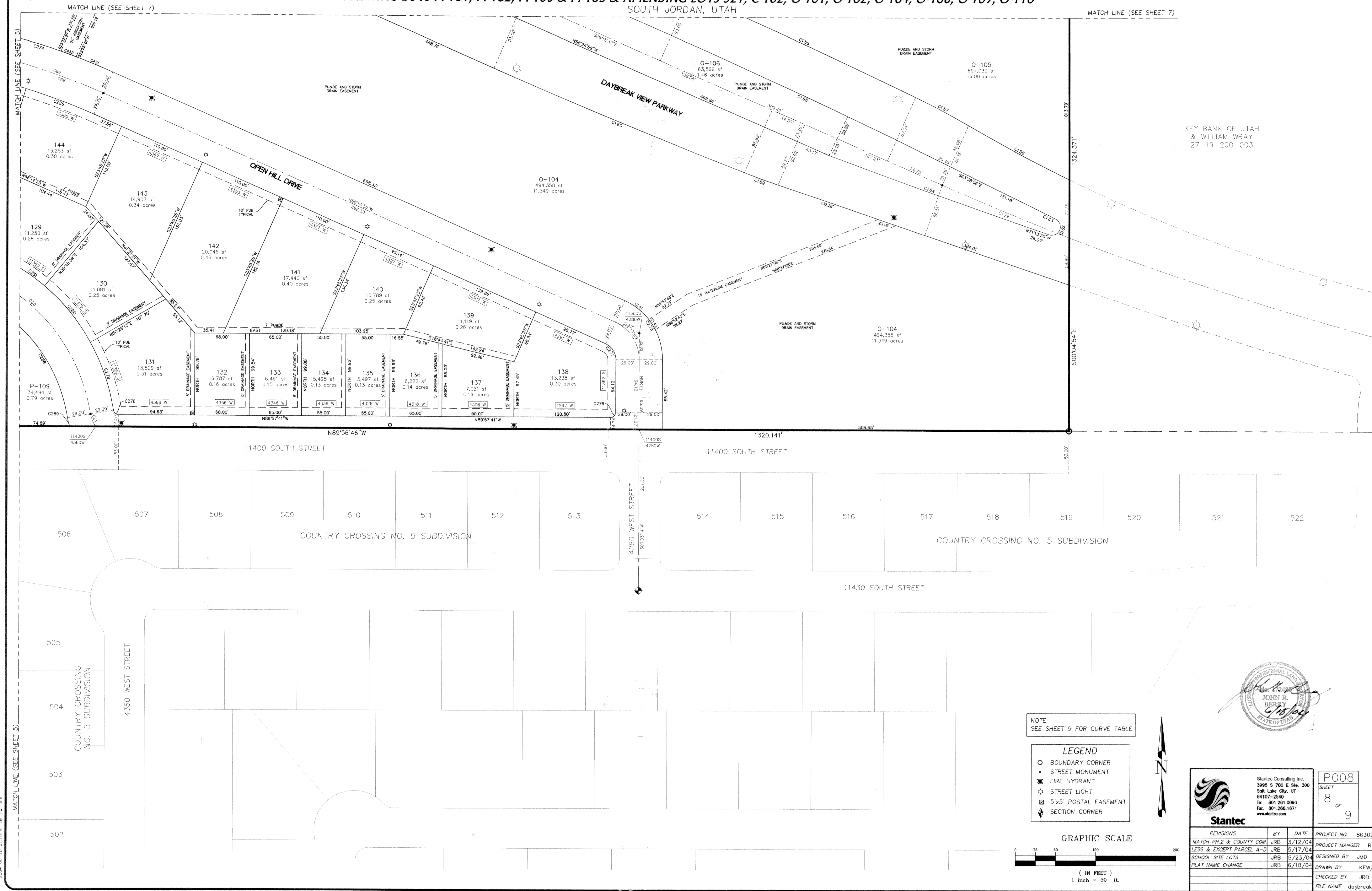


MATCH LINE (SEE SHEET 8)

MATCH LINE (SEE SHEET 8)

AMENDED KENNECOTT DAYBREAK PHASE 1 SUBDIVISION

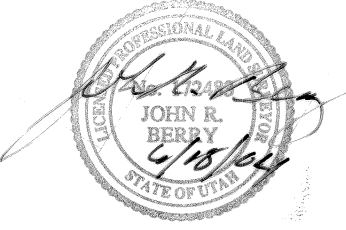
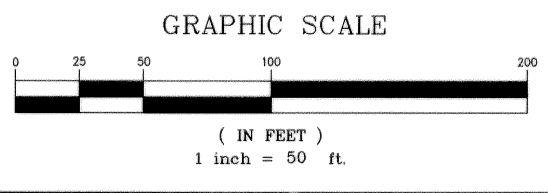
VACATING LOTS M-101, M-102, M-103 & M-105 & AMENDING LOTS 321, C-102, O-101, O-102, O-104, O-108, O-109, O-110
SOUTH JORDAN, UTAH



KEY BANK OF UTAH
& WILLIAM WRAY
27-19-200-003

NOTE:
SEE SHEET 9 FOR CURVE TABLE

- LEGEND**
- BOUNDARY CORNER
 - STREET MONUMENT
 - ✱ FIRE HYDRANT
 - ☆ STREET LIGHT
 - ⊠ 5'x5' POSTAL EASEMENT
 - ⬇ SECTION CORNER



Stantec
Stantec Consulting Inc.
3995 S 700 E Ste. 300
Salt Lake City, UT
84107-2540
Tel: 801.281.0090
Fax: 801.266.1671
www.stantec.com

P008
SHEET
8
OF
9

REVISIONS	BY	DATE	PROJECT NO.
MATCH PH. 2 & COUNTY COM	JRB	3/12/04	86302002
LESS & EXCEPT PARCEL A-B	JRB	5/17/04	
SCHOOL SITE LOTS	JRB	5/23/04	
PLAT NAME CHANGE	JRB	6/18/04	

PROJECT MANAGER	ROE
DESIGNED BY	JMD
DRAWN BY	KFW/TEJ
CHECKED BY	JRB
FILE NAME	daybreak1_3

I:\Projects\Utah\146302002\DWG\SET\PLANS\KAP\KAP101.dwg
 10/20/04 10:02 AM JRB

AMENDED KENNECOTT DAYBREAK PHASE 1 SUBDIVISION

VACATING LOTS M-101, M-102, M-103 & M-105 & AMENDING LOTS 321, C-102, O-101, O-102, O-104, O-108, O-109, O-110
SOUTH JORDAN, UTAH

CURVE TABLE			
CURVE	RADIUS	ARC LENGTH	DELTA
C1	350.000	223.261	36.3254
C2	271.000	33.736	707.57
C3	42.000	39.182	53.2706
C4	40.000	24.039	34.2559
C5	6.500	10.210	90.0000
C6	839.000	560.880	38810.10
C7	686.000	76.009	26.1406
C8	465.000	124.951	152.346
C9	875.000	161.977	103.3623
C10	6.500	10.210	90.0000
C11	42.000	29.591	40.2203
C12	171.000	82.603	27.4038
C20	43.500	68.33	90.0000
C21	32.000	50.27	90.0000
C22	32.000	50.27	90.0000
C23	32.000	50.27	90.0000
C24	32.000	50.27	90.0000
C25	300.000	97.23	18.3413
C26	300.000	64.48	12.1853
C27	300.000	32.76	6.1521
C28	300.000	23.64	4.3054
C29	150.000	16.62	6.2011
C30	319.000	156.02	28.0222
C31	319.000	47.47	8.3132
C32	319.000	108.95	19.3407
C33	319.000	47.07	8.2715
C34	319.000	34.19	6.0830
C35	319.000	13.27	2.2302
C36	150.000	2.06	0.8936
C37	150.000	45.36	17.1937
C38	150.000	44.09	16.5022
C39	150.000	3.34	1.1626
C40	150.000	47.50	18.0837
C41	32.000	48.75	8.7170
C42	690.000	472.86	39.1554
C43	690.000	25.79	2.0528
C44	690.000	20.07	1.8162
C45	32.000	50.27	90.0000
C46	500.000	318.95	36.3254
C47	500.000	159.47	18.1627
C48	500.000	159.47	18.1627
C49	820.000	455.37	31.4906
C50	820.000	87.70	4.4349
C51	820.000	42.99	2.9310
C52	897.91	31.39	2.0010
C53	863.99	36.90	2.2649
C54	820.000	30.80	2.0907
C55	671.000	270.49	23.0550
C56	671.000	27.88	2.2250
C57	671.000	262.50	21.3339
C58	671.000	17.99	1.3232
C59	515.000	328.51	36.3254
C60	220.000	309.94	80.4310
C61	35.500	16.78	2.7045
C62	600.000	382.73	36.3254
C63	801.000	556.90	39.5006
C64	801.000	521.85	37.1942
C65	801.000	35.94	2.3024
C66	801.000	286.18	20.2814
C67	801.000	39.41	2.4909
C68	801.000	246.77	17.3905
C69	50.000	57.81	66.1435
C70	801.500	206.07	14.4351
C71	801.500	169.25	12.0557
C72	801.500	36.81	2.3754
C73	801.500	326.73	23.2123
C74	801.500	37.16	2.3923
C75	801.500	252.88	18.0437
C76	801.500	36.69	2.3723
C77	801.500	3.02	0.1257
C78	550.000	139.76	14.3333
C79	32.000	50.27	90.0000
C80	32.000	50.27	90.0000
C81	416.000	165.69	22.4915
C82	665.000	168.98	14.3333
C83	665.000	139.97	12.0335
C84	665.000	29.01	2.2958
C85	665.000	214.36	18.2807
C86	665.000	29.01	2.2958
C87	665.000	121.98	10.2831
C88	665.000	63.77	5.2939
C89	281.000	179.32	36.3350
C90	281.000	8.43	1.4310
C91	281.000	178.31	36.2129
C92	281.000	9.44	1.5532
C93	645.000	144.40	12.4938
C94	645.000	162.62	14.2643
C95	645.000	132.94	11.4833
C96	645.000	174.08	15.2747
C97	500.000	42.60	5.0407
C98	910.61	80.56	5.0407
C99	500.000	9.44	1.0454
C100	500.000	9.44	1.0454
C101	150.000	3.74	1.2543
C102	150.000	76.05	29.0301
C103	150.000	6.03	2.1808
C104	150.000	73.77	28.0037
C105	150.000	85.95	32.4944

CURVE TABLE			
CURVE	RADIUS	ARC LENGTH	DELTA
C106	3024.00	377.77	7.0927
C107	200.00	21.85	6.1206
C108	200.00	95.71	27.2506
C109	200.00	50.86	14.3416
C110	200.00	44.84	12.5049
C111	200.00	96.34	27.3602
C112	400.00	293.33	42.0101
C113	400.00	250.50	35.5253
C114	400.00	42.84	6.0859
C115	400.00	35.26	5.0330
C116	200.00	47.79	13.4124
C117	200.00	102.83	29.2727
C118	200.00	5.95	1.4214
C119	200.00	96.88	27.4513
C120	3600.00	382.93	6.0540
C121	3600.00	74.81	1.9353
C122	3600.00	14.56	0.1354
C123	3600.00	181.21	2.5302
C124	3607.51	68.47	1.0515
C125	3617.83	45.51	0.4315
C126	3600.00	11.90	0.1122
C127	532.00	20.47	2.7125
C128	532.00	4.39	0.4997
C129	3600.00	171.62	2.4353
C130	532.00	21.32	2.1748
C131	532.00	9.64	1.0217
C132	232.00	38.64	9.3234
C133	232.00	39.42	9.4405
C134	429.00	99.31	13.1547
C135	429.00	74.81	9.1836
C136	579.00	18.85	1.5156
C137	579.00	14.80	0.1430
C138	3507.00	36.46	0.3544
C139	830.00	87.27	6.0129
C140	830.00	48.42	3.2023
C141	79.000	38.16	27.4026
C142	79.000	15.02	10.5343
C143	579.000	74.81	9.1836
C144	579.000	99.07	9.4812
C145	521.000	44.44	4.5312
C146	521.000	69.00	7.3517
C147	521.000	18.95	2.0504
C148	42.000	7.03	9.3539
C149	42.000	38.23	52.0922
C150	42.000	20.86	3.2003
C151	22.000	2.00	9.3539
C152	22.000	34.56	90.0000
C153	42.000	7.03	9.3539
C154	42.000	37.48	51.0750
C155	42.000	21.46	29.6131
C156	1966.00	142.80	4.0942
C157	1000.000	30.95	2.1218
C158	8041.000	338.18	2.2435
C159	1000.000	44.59	2.3318
C160	8041.000	338.18	2.2435
C161	3507.000	384.63	6.1702
C162	10.500	31.68	17.2538
C163	2017.500	15.96	0.2712
C164	565.000	161.28	4.4020
C165	7982.500	363.81	2.1811
C166	6.000	9.44	90.1122
C167	24.000	37.62	89.4838
C168	24.000	37.34	89.0854
C169	6.000	9.44	90.3338
C170	3634.500	347.79	5.2858
C171	3575.800	269.68	4.1917
C172	35.500	3.95	6.2236
C173	244.500	46.12	10.4826
C174	24.500	2.33	5.2719
C175	130.500	88.40	38.4849
C176	616.36	82.14	7.3807
C177	616.36	69.13	6.1261
C178	168.000	16.95	5.4656
C179	1.000	2.14	122.4700
C180	675.000	139.12	11.4833
C181	615.000	87.05	8.0637
C182	130.02	104.61	46.0551
C183	48.500	61.53	7.2410
C184	113.500	27.81	14.9217
C185	146.500	14.66	5.4354
C186	292.000	161.28	4.4020
C187	6.000	9.60	91.3750
C188	935.000	143.60	8.4759
C189	526.000	141.07	15.2346
C190	468.000	17.67	2.0948
C191	6.500	10.05	88.3342
C192	6.500	10.05	88.3529
C193	179.000	90.76	29.0301
C194	121.000	69.33	32.4944
C195	3053.000	13.84	0.1353
C196	3053.000	100.01	1.5237
C197	3053.000	100.07	1.5241
C198	3053.000	47.14	0.5305
C199	3053.000	120.33	2.1530
C200	6.500	12.58	110.9846
C201	168.000	37.67	12.5049
C202	232.000	111.76	27.3602
C203	6.500	10.21	90.0000

CURVE TABLE			
CURVE	RADIUS	ARC LENGTH	DELTA
C204	6.500	10.21	90.0000
C205	6.500	10.21	90.0000
C206	168.000	80.93	27.3602
C207	232.000	136.13	33.7127
C208	14.500	22.23	89.4838
C209	429.000	92.41	4.7040
C210	228.000	116.38	39.0237
C211	6.500	10.08	88.5157
C212	6.500	10.21	90.0000
C213	171.000	47.96	10.0409
C214	228.000	47.68	11.9541
C215	6.500	11.48	101.1109
C216	371.000	126.04	32.2447
C217	371.000	106.30	16.2457
C218	6.500	10.19	89.4736
C219	14.500	22.59	89.1653
C220	3693.000	78.60	3.2343
C221	222.000	14.96	5.5106
C222	295.000	32.44	6.1803
C223	295.000	32.44	6.1803
C224	92.42	65.80	40.5107
C225	116.50	124.88	61.2533
C226	6.500	10.47	92.1657
C227	121.000	59.26	5.9235
C228	179.000	102.86	32.9448
C229	2995.000	374.14	7.0927
C230	310.000	50.00	9.1428
C231	310.000	50.74	9.2243
C232	310.000	90.25	16.4426
C233	6.000	9.57	91.2352
C234	765.500	241.62	18.0505
C235	6.000	9.72	92.4211
C236	675.000	188.57	16.0023
C237	655.000	249.00	21.1100
C238	22.000	39.70	103.2331
C239	406.000	40.44	5.5836
C240	406.000	65.48	9.1429
C241	42.000	8.73	1.1359
C242	42.000	38.63	5.2446
C243	42.000	27.35	3.7814
C244	22.000	34.56	90.0000
C245	426.000	12.67	1.4213
C246	426.000	46.59	6.1528
C247	426.000	55.82	7.3029
C248	426.000	25.86	3.2842
C249	42.000	42.00	85.9376
C250	655.000	89.92	7.5157
C251	14.500	22.78	90.0000
C252	14.500	22.78	90.0000
C253	14.500	22.78	90.0000
C254	42.000	29.74	40.3418
C255	42.000	35.64	48.3713
C256	42.000	34.56	90.0000
C257	22.000	34.56	90.0000
C258	22.000	34.56	90.0000
C259	655.000	31.86	2.4713
C260	655.000	35.10	3.0415
C261	655.000	70.47	6.0950
C262	675.000	142.51	12.0549
C263	6.000	9.68	92.2736
C264	784.000	161.27	12.0539
C265	6.000	9.42	90.0000
C266	6.000	9.42	89.5956
C267	42.000	0.59	48.2825
C268	2010.51	12.73	0.2146
C269	120.000	225.94	10.7246
C270	1030.000	189.05	10.3059
C271	120.000	233.86	11.1393
C272	830.000	160.38	11.0416
C273	830.000	346.35	23.5432