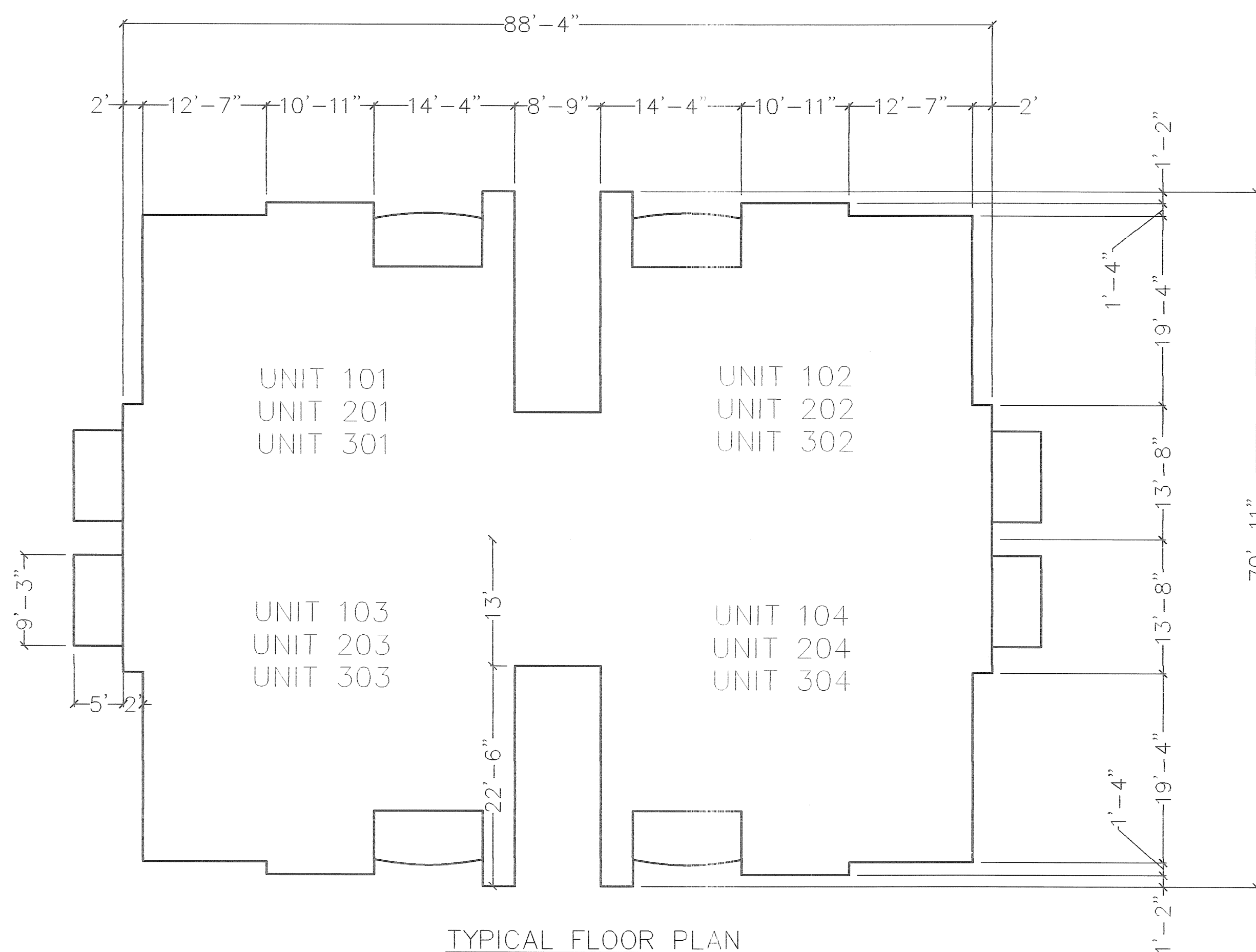
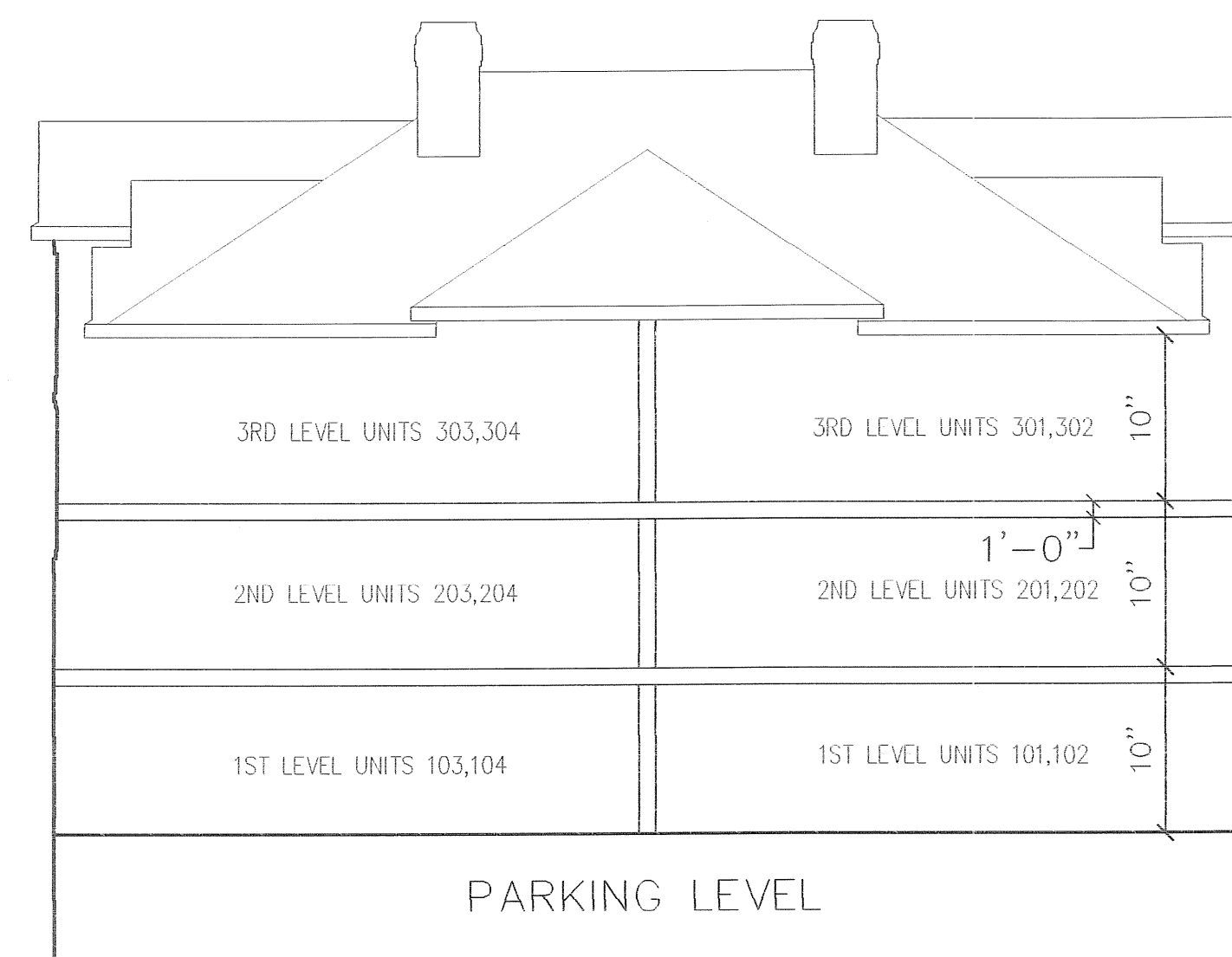


TYPICAL FRONT ELEVATION



TYPICAL FLOOR PLAN



TYPICAL SIDE ELEVATION



(24"x36")
SCALE: 1" = 10'
(11"x17")
SCALE: 1" = 20'

LEGEND

- LIMITED COMMON AREA
- PRIVATE OWNERSHIP

ENT. 84688:2007 REG. 12315
RANDALL A. COVINGTON
UTAH COUNTY RECORDER
2007 Jun 08 3:55 PM FEE \$4.00 BY SL
RECORDED FOR PLEASANT GROVE CITY CORPORA

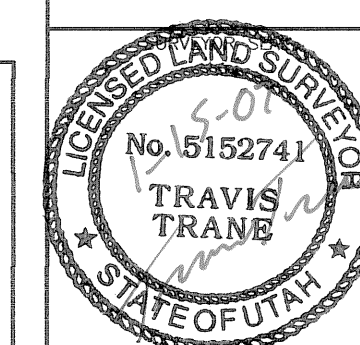
SHEET 2 OF 2
PHASE "19 & 20"

BELLE MONET
CONDOMINIUMS

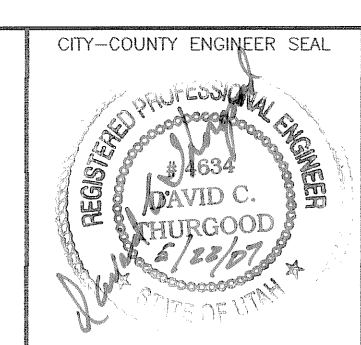
AN EXPANDABLE UTAH CONDOMINIUM PROJECT

PLEASANT GROVE UTAH COUNTY, UTAH

RECORDING INFORMATION BLOCK
Recorded in the Official Records of Utah County, State of
Utah, on _____ 20____, at _____ M, as Entry No. _____
and Map Filing No. _____
At the request of _____
Fee _____ Utah County Recorder



NOTARY PUBLIC SEAL



CITY-COUNTY ENGINEER SEAL

CLERK-RECORDED SEAL

12315 sheet 2 of 2

NW 1/4 SEC. 30, T33S, R2E, S1B, 1M
TU 070 24