

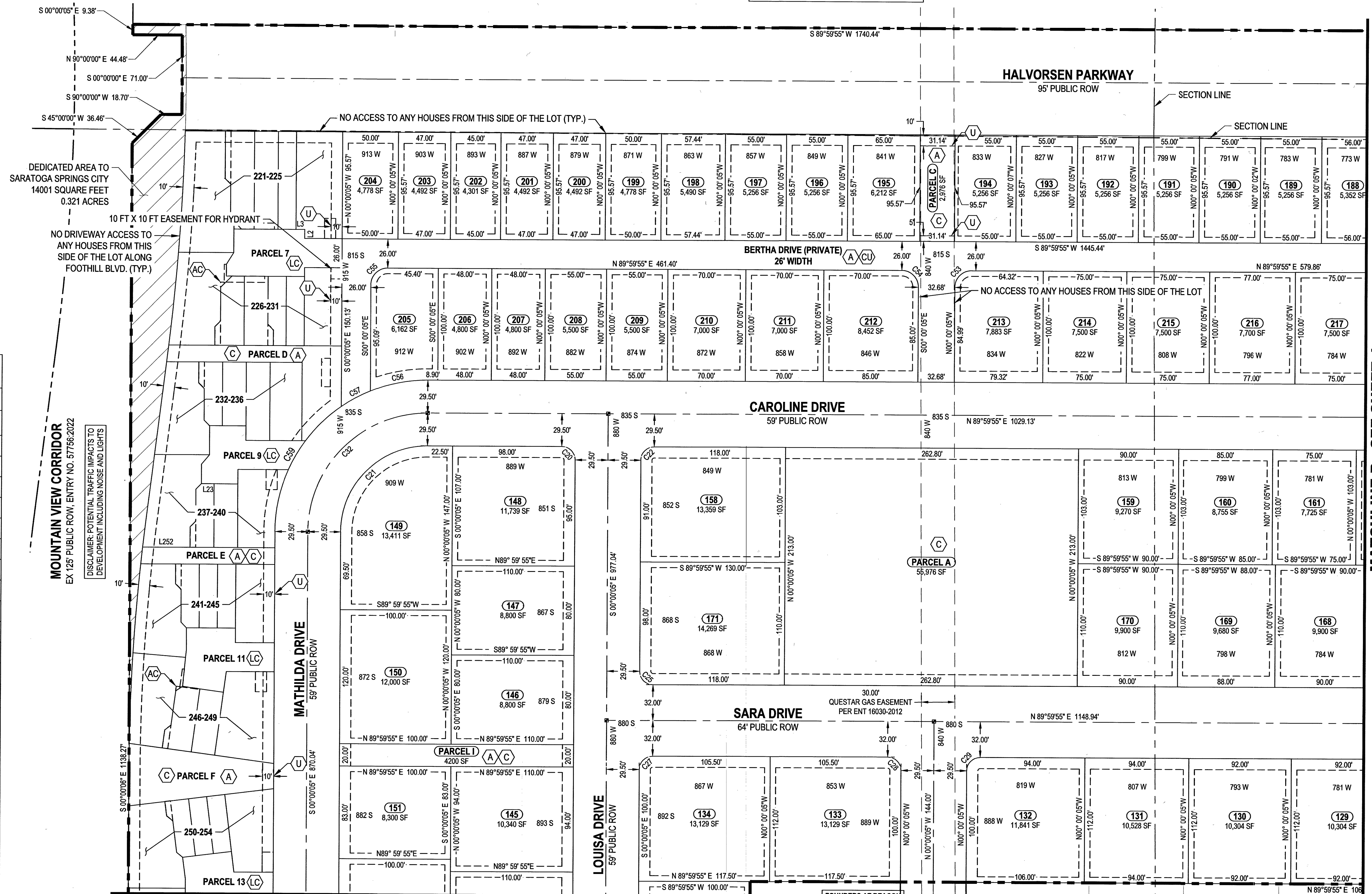
I.D. 58-039-0027
CORPORATION OF THE PRESIDING BISHOP OF THE
CHURCH OF JESUS CHRIST OF LATTER-DAY SAINTS

- SECTION LINE
- - - - - PROPERTY BOUNDARY
- LOT LINE
- - - - - PROPOSED ROW LINE
- - - - - ROAD CENTERLINE
- - - - - EASEMENT
- STREET MONUMENT
- ▨ AREA DEDICATED TO SARATOGA SPRINGS

EASEMENTS		
	EASEMENT TYPE	GRANTED TO
(CU)	BLANKET UTILITY EASEMENT GRANTED TO THE CITY OF SARATOGA SPRINGS	-
(LC)	LIMITED COMMON AREA	-
(A)	PUBLIC ACCESS EASEMENT	-
(AC)	ACCESS EASEMENT FOR AC UNITS	-
(C)	COMMON AREA	-
(UA)	PUBLIC UTILITY AND ACCESS EASEMENT	-
(U)	PUBLIC UTILITY EASEMENT	-
(1)	SHARED ACCESS EASEMENT	LOTS 173-174
(2)	ACCESS EASEMENT	LOT 227
(3)	LAND USE EASEMENT	LOT 225
(4)	ACCESS EASEMENT	LOT 226
(5)	LAND USE EASEMENT	LOT 226
(6)	LAND USE EASEMENT	LOT 229
(7)	LAND USE EASEMENT	LOT 236
(8)	LAND USE EASEMENT	LOT 237
(9)	LAND USE EASEMENT	LOT 245
(10)	ACCESS EASEMENT	LOT 246
(11)	LAND USE EASEMENT	LOT 246
(12)	LAND USE EASEMENT	LOT 254
(13)	LAND USE EASEMENT	LOT 255
(14)	LAND USE EASEMENT	LOT 263
(15)	ACCESS EASEMENT	LOT 263
(16)	ACCESS EASEMENT	LOT 264
(17)	LAND USE EASEMENT	LOT 264
(18)	LAND USE EASEMENT	LOT 271
(19)	ACCESS EASEMENT	LOT 271
(20)	ACCESS EASEMENT	LOT 272
(21)	LAND USE EASEMENT	LOT 272

SHEET NOTES

1. BEARINGS, DISTANCES, AREAS, AND EASEMENTS PERTAINING TO LOTS 221-275 AND PARCELS 7-17 ARE FOUND ON SHEET 5
- * INDICATES BEARINGS/DISTANCES OF EASEMENT LINES



MATCHLINE A - SEE SHEET 4

MATCHLINE B - SEE SHEET 4

19034
Sheet 3 of 6

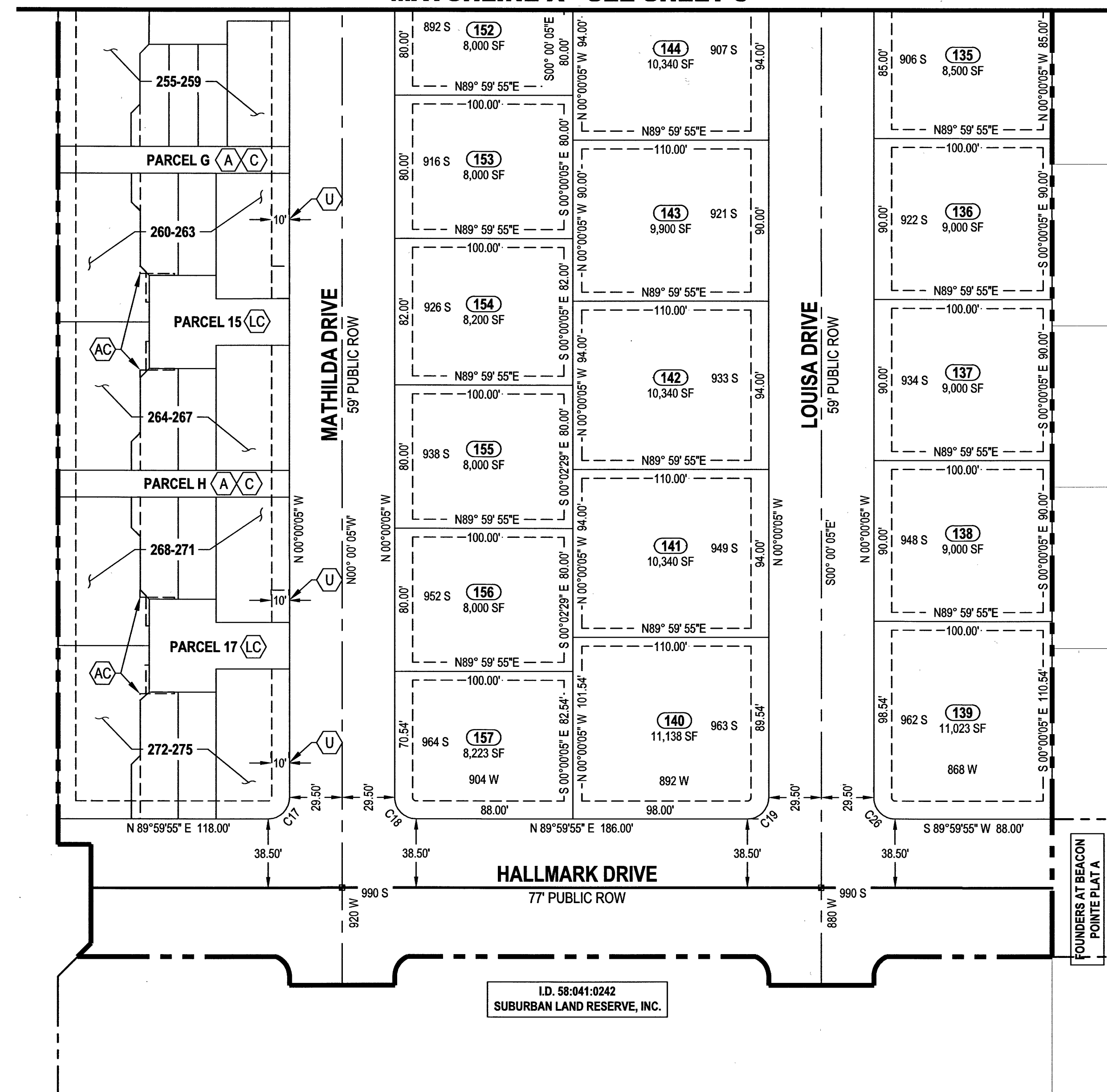
ENT 82644-2023 RAPA 19034
ANDREA ALLEN
UTAH COUNTY RECORDER
2023 Dec 21 01:00 PM FEE \$63.00 BY THE
RECORDER FOR SARATOGA SPRINGS CITY

CRS ENGINEERS
Answers to Infrastructure®
4246 S Riverboat Rd, Ste 200 | Salt Lake City, UT 84123 | P: 801.359.5565 | www.crsengineers.com

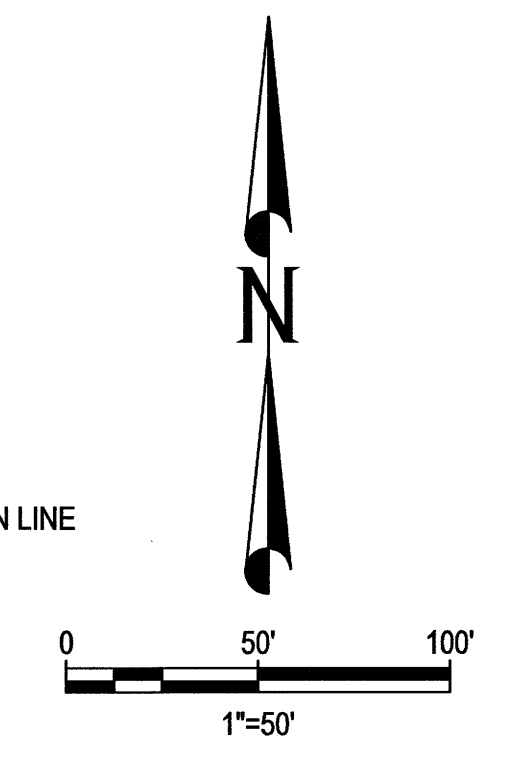
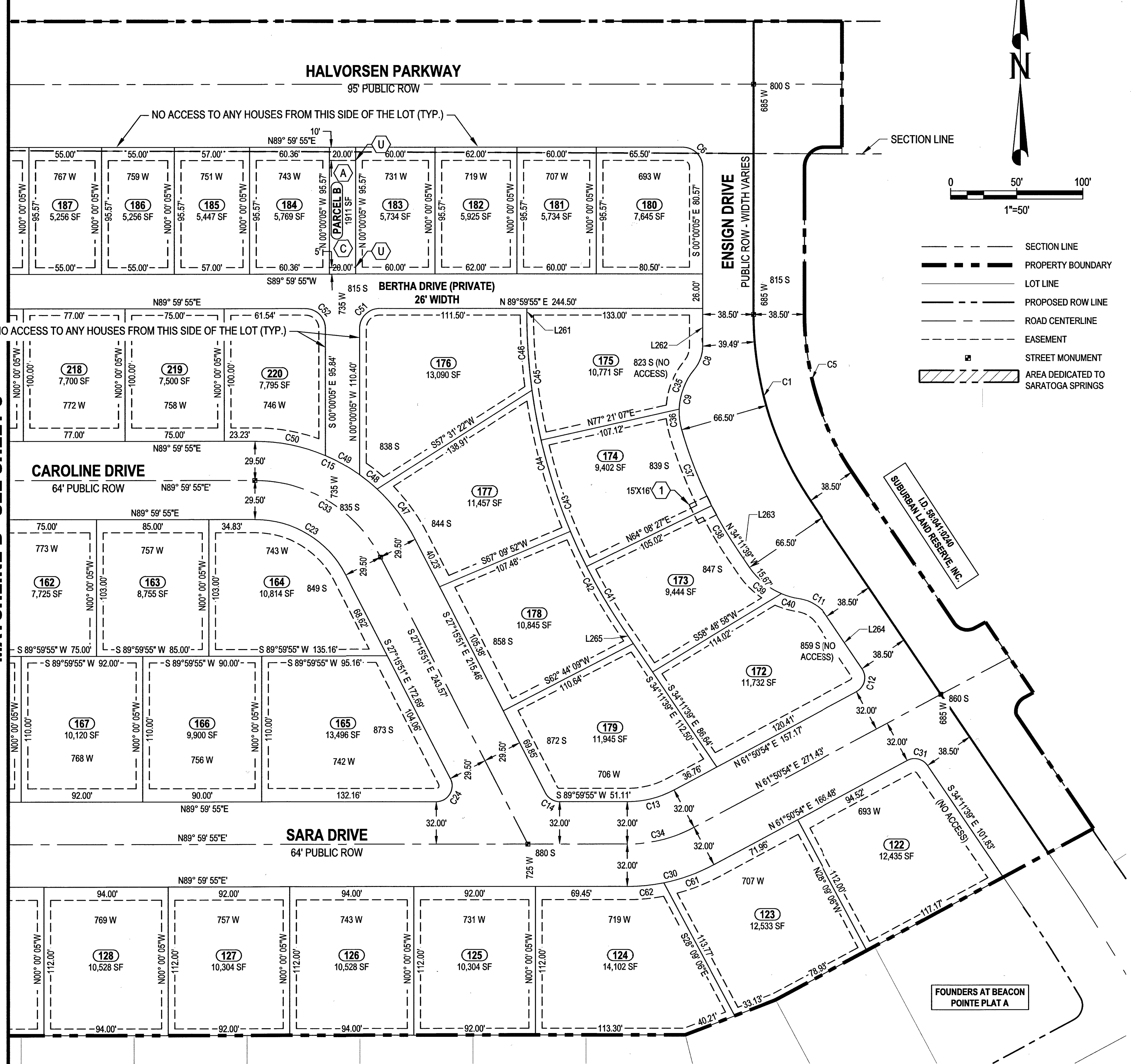
SHEET 3 OF 6
BEACON POINTE VILLAGE 2
LOCATED IN A PORTION OF SECTION 34, TOWNSHIP 5 SOUTH, RANGE 1 WEST,
SALT LAKE BASE & MERIDIAN
CITY OF SARATOGA SPRINGS, UTAH COUNTY, UTAH

I.D. 58-039-0027
 CORPORATION OF THE PRESIDING BISHOP OF THE
 CHURCH OF JESUS CHRIST OF LATTER-DAY SAINTS

MATCHLINE A - SEE SHEET 3



MATCHLINE B - SEE SHEET 3



- SECTION LINE
- PROPERTY BOUNDARY
- LOT LINE
- PROPOSED ROW LINE
- ROAD CENTERLINE
- - - EASEMENT
- STREET MONUMENT
- ▨ AREA DEDICATED TO SARATOGA SPRINGS

MOUNTAIN VIEW CORRIDOR
 EX 125 PUBLIC ROW, ENTRY NO. 57766-2022
 DISCLAIMER: POTENTIAL TRAFFIC IMPACTS TO
 DEVELOPMENT INCLUDING NOISE AND LIGHTS

I.D. 58-041-0242
 SUBURBAN LAND RESERVE, INC.

FOUNDERS AT BEACON
 POINTE PLAT A

EASEMENTS			
EASEMENT TYPE	GRANTED TO	EASEMENT TYPE	GRANTED TO
CU	BLANKET UTILITY EASEMENT GRANTED TO THE CITY OF SARATOGA SPRINGS	8	LAND USE EASEMENT LOT 237
LC	LIMITED COMMON AREA	9	LAND USE EASEMENT LOT 245
A	PUBLIC ACCESS EASEMENT	10	ACCESS EASEMENT LOT 246
AC	ACCESS EASEMENT FOR AC UNITS	11	LAND USE EASEMENT LOT 246
C	COMMON AREA	12	LAND USE EASEMENT LOT 254
UA	PUBLIC UTILITY AND ACCESS EASEMENT	13	LAND USE EASEMENT LOT 255
U	PUBLIC UTILITY EASEMENT	14	LAND USE EASEMENT LOT 263
1	SHARED ACCESS EASEMENT LOTS 173-174	15	ACCESS EASEMENT LOT 263
2	ACCESS EASEMENT LOT 227	16	ACCESS EASEMENT LOT 264
3	LAND USE EASEMENT LOT 225	17	LAND USE EASEMENT LOT 264
4	ACCESS EASEMENT LOT 226	18	LAND USE EASEMENT LOT 271
5	LAND USE EASEMENT LOT 226	19	ACCESS EASEMENT LOT 271
6	LAND USE EASEMENT LOT 229	20	ACCESS EASEMENT LOT 272
7	LAND USE EASEMENT LOT 236	21	LAND USE EASEMENT LOT 272

SHEET NOTES

- BEARINGS, DISTANCES, AREAS, AND EASEMENTS PERTAINING TO LOTS 221-275 AND PARCELS 7-17 ARE FOUND ON SHEET 5
- * INDICATES BEARINGS/DISTANCES OF EASEMENT LINES
- LOTS 172 AND 175 TO HAVE FRONT DOORS AND ADDRESSES ON ENSIGN DRIVE

CRS ENGINEERS
 Answers to Infrastructure®
 4246 S Riverboat Rd, Ste 200 | Salt Lake City, UT 84123 | P: 801.359.5565 | www.crsengineers.com

19034
 SHEET 4 OF 6

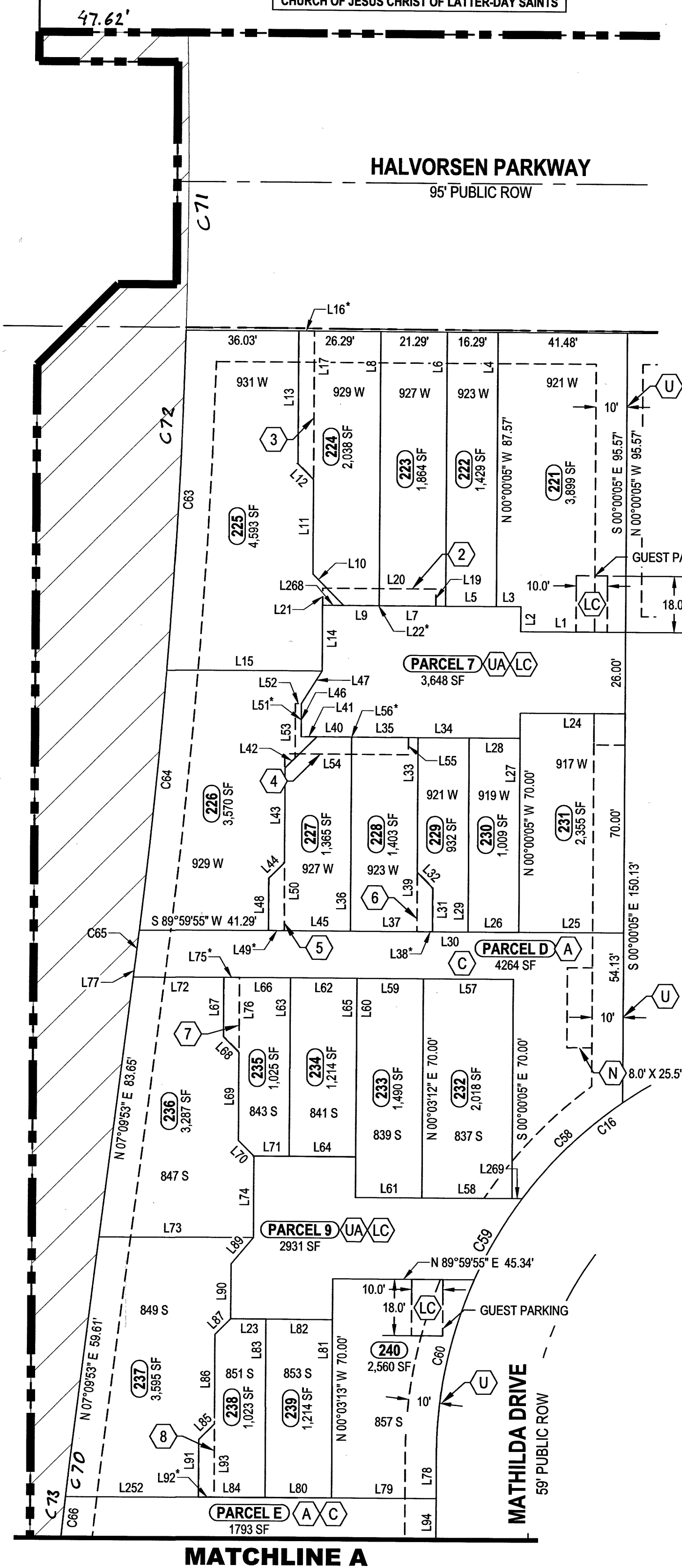
BEACON POINTE VILLAGE 2
 LOCATED IN A PORTION OF SECTION 34, TOWNSHIP 5 SOUTH, RANGE 1 WEST,
 SALT LAKE BASE & MERIDIAN
 CITY OF SARATOGA SPRINGS, UTAH COUNTY, UTAH

ENT 82644-2023 MAP# 19034
 ANDREA ALLEN
 UTAH COUNTY RECORDER
 2023 Dec 21 01:00 PM FEE \$38.00 BY MG
 RECORDED FOR SARATOGA SPRINGS CITY

I.D. 58-039-0027
 CORPORATION OF THE PRESIDING BISHOP OF THE
 CHURCH OF JESUS CHRIST OF LATTER-DAY SAINTS

MOUNTAIN VIEW CORRIDOR
 EX 125 PUBLIC ROW, ENTRY NO. 57756.2022

DISCLAIMER: POTENTIAL TRAFFIC IMPACTS TO
 DEVELOPMENT INCLUDING NOISE AND LIGHTS



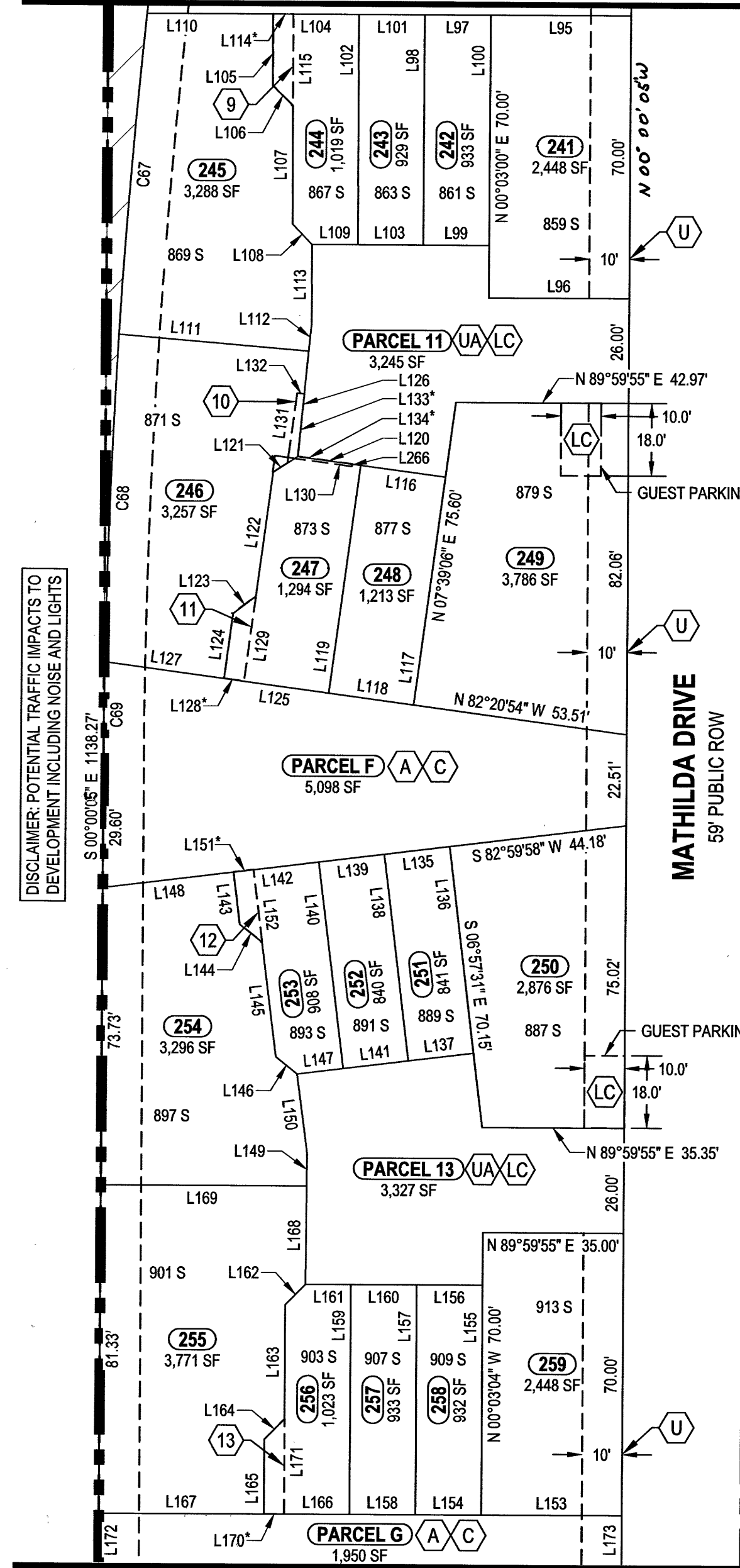
SHEET NOTES

- BEARINGS, DISTANCES, AREAS, AND EASEMENTS PERTAINING TO LOTS 221-275 AND PARCELS 7-17 ARE FOUND ON SHEET 5
- INDICATES BEARINGS/DISTANCES OF EASEMENT LINES

MATCHLINE A

MOUNTAIN VIEW CORRIDOR
 EX 125 PUBLIC ROW, ENTRY NO. 57756.2022

DISCLAIMER: POTENTIAL TRAFFIC IMPACTS TO
 DEVELOPMENT INCLUDING NOISE AND LIGHTS

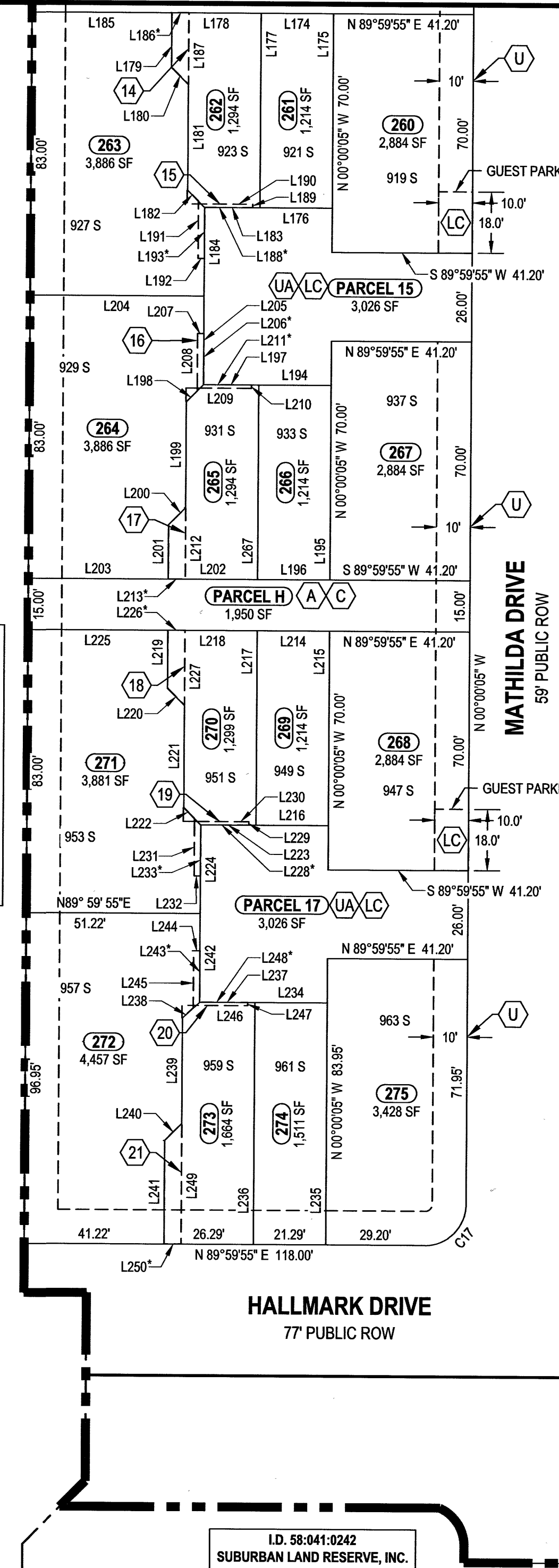


MATCHLINE B

MATCHLINE B

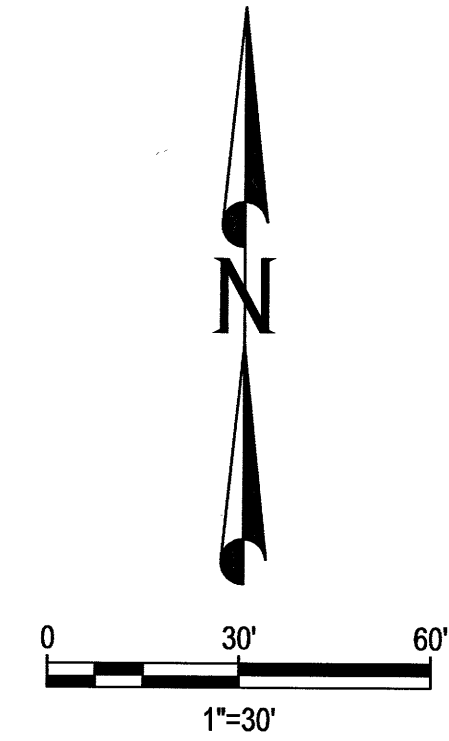
MOUNTAIN VIEW CORRIDOR
 EX 125 PUBLIC ROW, ENTRY NO. 57756.2022

DISCLAIMER: POTENTIAL TRAFFIC IMPACTS TO
 DEVELOPMENT INCLUDING NOISE AND LIGHTS



I.D. 58-041-0242
 SUBURBAN LAND RESERVE, INC.

19034
 sheet 5 of 6



- SECTION LINE
- PROPERTY BOUNDARY
- LOT LINE
- PROPOSED ROW LINE
- ROAD CENTERLINE
- EASEMENT
- STREET MONUMENT
- AREA DEDICATED TO SARATOGA SPRINGS

EASEMENTS

EASEMENT TYPE	GRANTED TO
(CU) BLANKET UTILITY EASEMENT GRANTED TO THE CITY OF SARATOGA SPRINGS	-
(LC) LIMITED COMMON AREA	-
(A) PUBLIC ACCESS EASEMENT	-
(AC) ACCESS EASEMENT FOR AC UNITS	-
(C) COMMON AREA	-
(UA) PUBLIC UTILITY AND ACCESS EASEMENT	-
(U) PUBLIC UTILITY EASEMENT	-
(1) SHARED ACCESS EASEMENT	LOTS 173-174
(2) ACCESS EASEMENT	LOT 227
(3) LAND USE EASEMENT	LOT 225
(4) ACCESS EASEMENT	LOT 226
(5) LAND USE EASEMENT	LOT 226
(6) LAND USE EASEMENT	LOT 229
(7) LAND USE EASEMENT	LOT 236
(8) LAND USE EASEMENT	LOT 237
(9) LAND USE EASEMENT	LOT 245
(10) ACCESS EASEMENT	LOT 246
(11) LAND USE EASEMENT	LOT 246
(12) LAND USE EASEMENT	LOT 254
(13) LAND USE EASEMENT	LOT 255
(14) LAND USE EASEMENT	LOT 263
(15) ACCESS EASEMENT	LOT 263
(16) ACCESS EASEMENT	LOT 264
(17) LAND USE EASEMENT	LOT 264
(18) LAND USE EASEMENT	LOT 271
(19) ACCESS EASEMENT	LOT 271
(20) ACCESS EASEMENT	LOT 272
(21) LAND USE EASEMENT	LOT 272

SHEET 5 OF 6

CRS ENGINEERS
 Answers to Infrastructure®
 4246 S Riverboat Rd, Ste 200 | Salt Lake City, UT 84123 | P: 801.359.5565 | www.crsengineers.com

BEACON POINTE VILLAGE 2
 LOCATED IN A PORTION OF SECTION 34, TOWNSHIP 5 SOUTH, RANGE 1 WEST,
 SALT LAKE BASE & MERIDIAN
 CITY OF SARATOGA SPRINGS, UTAH COUNTY, UTAH

ENT 82644-2023 MAP# 19034
 ANDREA ALLEN
 UTAH COUNTY RECORDER
 2023 Dec 21 01:10:01 PM FEE \$39.00 BY 76
 RECORDED FOR SARATOGA SPRINGS CITY

LINE TABLE		
LINE #	LENGTH	DIRECTION
L1	33.65'	S89° 59' 55"W
L2	8.00'	N0° 00' 06"W
L3	7.83'	S89° 59' 54"W
L4	87.57'	N0° 01' 36"E
L5	16.25'	N89° 59' 53"E
L6	87.57'	N0° 00' 07"W
L7	21.29'	N89° 59' 53"E
L8	87.57'	N0° 00' 07"W
L9	11.29'	N89° 59' 55"E
L10	14.14'	N45° 00' 05"W
L11	30.26'	N0° 00' 05"W
L12	7.07'	N45° 00' 04"W
L13	42.31'	N0° 00' 03"W
L14	21.00'	N0° 00' 02"W
L15	49.69'	S89° 59' 59"E
L16	5.00'	N89° 59' 55"E
L17	47.31'	S0° 00' 05"E
L19	5.46'	N0° 00' 33"W
L20	36.29'	S89° 59' 55"W
L21	5.46'	S0° 00' 05"E
L22	36.29'	N89° 59' 55"E
L23	11.29'	N89° 56' 16"E
L24	33.65'	N89° 59' 55"E
L25	33.65'	N89° 59' 41"W
L26	16.25'	S89° 51' 51"E
L27	62.00'	N0° 00' 05"W
L28	16.29'	S89° 59' 55"W
L29	62.00'	N0° 02' 07"W
L30	11.39'	N89° 57' 53"E
L31	14.00'	N0° 00' 05"W
L32	7.08'	N44° 56' 19"W
L33	42.99'	N0° 01' 20"E
L34	16.33'	N89° 59' 36"W
L35	21.31'	N89° 59' 33"W
L36	62.01'	N0° 00' 05"W
L37	26.29'	N89° 59' 55"E
L38	5.00'	N89° 59' 55"E
L39	19.01'	N0° 00' 05"W
L40	11.24'	S89° 57' 23"W
L41	4.99'	S89° 52' 42"E
L42	14.11'	S45° 15' 45"W
L43	30.37'	S0° 00' 05"E
L44	7.08'	S44° 56' 19"W
L45	26.26'	N89° 59' 55"E
L46	10.50'	S0° 00' 26"W
L47	12.39'	S32° 13' 01"W
L48	16.68'	S0° 00' 05"E
L49	5.04'	N89° 52' 36"E
L50	21.68'	N0° 05' 54"W
L51	10.50'	S0° 00' 05"E
L52	1.89'	N89° 59' 55"E
L53	16.00'	N0° 00' 05"W
L54	36.29'	S89° 59' 55"W

LINE TABLE		
LINE #	LENGTH	DIRECTION
L55	5.49'	S0° 00' 05"E
L56	34.40'	S89° 59' 34"E
L57	28.80'	N89° 59' 55"E
L58	28.87'	S89° 59' 39"W
L59	21.29'	S89° 59' 55"W
L60	69.98'	S0° 03' 07"W
L61	21.29'	S89° 56' 53"E
L62	21.29'	N89° 56' 51"W
L63	57.02'	N0° 03' 09"E
L64	21.29'	S89° 56' 32"E
L65	57.02'	N0° 03' 07"E
L66	21.35'	S89° 57' 00"W
L67	18.82'	S0° 00' 00"E
L68	7.07'	S44° 59' 59"E
L69	28.19'	S0° 00' 04"E
L70	7.07'	S45° 00' 03"E
L71	11.30'	N89° 59' 53"E
L72	28.96'	N89° 59' 41"E
L73	49.39'	N89° 59' 55"E
L74	26.00'	S0° 00' 05"E
L75	5.00'	S89° 59' 55"W
L76	23.81'	N0° 00' 00"E
L77	4.40'	N7° 09' 53"E
L78	14.50'	S0° 00' 05"E
L79	33.48'	S89° 59' 55"W
L80	21.29'	S89° 59' 06"W
L81	57.02'	S0° 03' 13"E
L82	21.30'	S89° 48' 24"E
L83	57.09'	N0° 03' 44"W
L84	21.35'	N89° 59' 17"W
L85	7.07'	S44° 59' 54"W
L86	28.67'	S0° 00' 04"E
L87	7.07'	S44° 59' 55"W
L88	7.07'	N44° 59' 55"E
L89	11.01'	S40° 05' 09"W
L90	17.50'	S0° 00' 05"E
L91	18.41'	S0° 00' 06"E
L92	5.00'	N89° 59' 55"E
L93	23.41'	N0° 00' 06"W
L94	15.00'	S0° 00' 05"E
L95	34.94'	N89° 59' 55"E
L96	35.00'	S89° 59' 55"W
L97	16.37'	S89° 59' 55"W
L98	57.00'	N0° 01' 16"E
L99	16.35'	N89° 59' 55"E
L100	57.00'	N0° 03' 00"E
L101	16.35'	S89° 59' 54"W
L102	57.00'	N0° 04' 30"W
L103	16.25'	N89° 59' 55"E
L104	21.35'	S89° 59' 55"W
L105	17.68'	N0° 08' 13"W
L106	7.07'	N45° 08' 13"W
L107	29.27'	N0° 08' 34"W

LINE TABLE		
LINE #	LENGTH	DIRECTION
L108	7.06'	N44° 10' 47"W
L109	11.38'	N89° 59' 55"E
L110	31.31'	S89° 59' 55"W
L111	47.35'	S85° 14' 47"E
L112	6.82'	N5° 39' 49"E
L113	19.59'	N0° 03' 03"W
L114	5.00'	N89° 59' 55"E
L115	22.67'	S0° 08' 13"E
L116	21.29'	S82° 20' 54"E
L117	56.97'	S7° 39' 06"W
L118	21.29'	N82° 20' 54"W
L119	56.97'	N7° 39' 06"E
L120	15.80'	S82° 20' 54"E
L121	7.23'	N57° 08' 25"E
L122	30.96'	N7° 39' 06"E
L123	7.07'	N52° 39' 06"E
L124	16.31'	N7° 39' 06"E
L125	26.29'	N82° 20' 54"W
L126	26.27'	S5° 39' 49"W
L127	29.88'	S82° 20' 54"E
L128	5.00'	S82° 20' 54"E
L129	21.31'	N7° 39' 06"E
L130	16.00'	N82° 20' 54"W
L131	16.10'	N7° 39' 06"E
L132	1.81'	S84° 20' 11"E
L133	15.53'	S5° 17' 48"W
L134	13.55'	S82° 20' 54"E
L135	16.38'	S82° 59' 58"W
L136	51.50'	N6° 57' 31"W
L137	16.30'	N82° 59' 58"E
L138	51.50'	N7° 02' 54"W
L139	16.35'	S82° 59' 58"W
L140	51.50'	N7° 07' 13"W
L141	16.28'	N82° 59' 58"E
L142	21.39'	S82° 59' 58"W
L143	13.06'	N7° 14' 22"W
L144	7.07'	N52° 14' 22"W
L145	28.57'	N7° 14' 22"W
L146	6.81'	N51° 02' 43"W
L147	11.57'	N82° 59' 58"E
L148	32.69'	S82° 59' 58"W
L149	8.19'	N0° 22' 30"E
L150	19.79'	N7° 38' 55"W
L151	5.00'	N83° 00' 07"E
L152	18.04'	N7° 14' 22"W
L153	34.94'	S89° 59' 55"W
L154	16.37'	S89° 59' 55"W
L155	57.00'	S0° 03' 04"E
L156	16.34'	N89° 59' 55"E
L157	57.00'	N0° 01' 34"W
L158	16.39'	S89° 59' 55"W
L159	57.00'	N0° 00' 38"E
L160	16.35'	N89° 59' 55"E

LINE TABLE		
LINE #	LENGTH	DIRECTION
L161	11.32'	N89° 59' 55"E
L162	7.12'	N44° 38' 27"E
L163	28.32'	N0° 00' 00"E
L164	7.07'	N45° 00' 36"E
L165	18.62'	N0° 00' 16"E
L166	21.32'	S89° 59' 55"W
L167	40.99'	N89° 59' 55"E
L168	24.33'	N0° 22' 30"E
L169	51.15'	S89° 59' 55"W
L170	5.00'	N89° 59' 55"E
L171	23.62'	N0° 00' 36"E
L172	15.00'	S0° 00' 05"E
L173	15.00'	N0° 00' 05"W
L174	21.29'	N89° 59' 55"E
L175	57.00'	S0° 00' 05"E
L176	21.29'	S89° 59' 55"W
L177	57.00'	S0° 00' 05"E
L178	26.29'	N89° 59' 55"E
L179	16.01'	S0° 00' 05"E
L180	7.07'	S45° 00' 00"E
L181	30.96'	S0° 00' 05"E
L182	7.09'	S44° 49' 42"E
L183	16.29'	S89° 59' 55"W
L184	26.00'	S0° 00' 05"E
L185	41.22'	N89° 59' 55"E
L186	5.00'	N89° 59' 55"E
L187	21.01'	N0° 00' 05"W
L188	14.15'	N89° 59' 55"E
L189	0.98'	S0° 00' 05"E
L190	16.00'	N89° 59' 55"E
L191	15.99'	N0° 00' 05"W
L192	1.85'	S89° 59' 55"W
L193	15.01'	S0° 00' 05"E
L194	21.29'	N89° 59' 55"E
L195	57.00'	S0° 00' 05"E
L196	130.00'	N89° 59' 55"E
L197	16.29'	N89° 59' 55"E
L198	7.09'	N44° 49' 31"E
L199	30.96'	N0° 00' 04"W
L200	7.07'	N44° 59' 57"E
L201	16.01'	N0° 00' 06"W
L202	26.29'	S89° 59' 55"W
L203	41.22'	N89° 59' 55"E
L204	51.22'	S89° 59' 55"W
L205	26.00'	N0° 00' 05"W
L206	15.01'	S0° 00' 05"E
L207	1.85'	N89° 59' 55"E
L208	16.00'	N0° 00' 05"W
L209	16.00'	S89° 59' 55"W
L210	0.99'	S0° 00' 05"E
L211	14.15'	N89° 59' 55"E
L212	21.01'	N0° 00' 05"W
L213	5.00'	N89° 59' 55"E
L214	21.29'	N89° 59' 55"E

LINE TABLE		
LINE #	LENGTH	DIRECTION
L215	57.00'	S0° 00' 05"E
L216	21.29'	S89° 59' 55"W
L217	57.00'	S0° 00' 05"E
L218	26.29'	N89° 59' 55"E
L219	17.01'	N0° 00' 05"W
L220	7.07'	N45° 00' 00"W
L221	29.96'	N0° 00' 05"W
L222	7.09'	N44° 49' 42"W
L223	16.26'	S89° 59' 55"W
L224	26.00'	N0° 00' 05"W
L225	41.22'	S89° 59' 55"W
L226	5.00'	N89° 59' 55"E
L227	22.01'	N0° 00' 05"W
L228	14.12'	N89° 59' 55"E
L229	0.98'	N0° 00' 05"W
L230	16.00'	S89° 59' 55"W
L231	15.99'	S0° 00' 05"E
L232	1.85'	N89° 59' 55"E
L233	15.01'	N0° 06' 48"E
L234	21.29'	N89° 59' 55"E
L235	70.95'	S0° 00' 05"E
L236	70.95'	N0° 00' 05"W
L237	16.29'	N89° 59' 55"E
L238	6.77'	N47° 35' 20"E
L239	30.96'	N0° 00' 05"W
L240	7.07'	N45° 00' 00"E
L241	30.42'	N0° 00' 05"W
L242	26.00'	S0° 00' 05"E
L243	15.04'	S0° 00' 05"E
L244	1.85'	N89° 59' 55"E
L245	15.99'	N0° 00' 05"W
L246	16.00'	S89° 59' 55"W
L247	0.95'	S0° 00' 05"E
L248	14.15'	N89° 59' 55"E
L249	35.42'	N0° 00' 05"W
L250	5.00'	N89° 59' 55"E
L251	4.50'	S0° 00' 05"E
L252	28.42'	S0° 00' 05"E
L253	15.67'	S34° 11' 39"E
L254	47.59'	N34° 11' 39"W
L255	13.73'	S34° 11' 39"E
L256	0.65'	S7° 39' 06"W
L257	57.00'	N0° 00' 05"W
L258	6.86'	N89° 59' 53"E
L259	3.30'	S89° 59' 55"W

CURVE TABLE				
CURVE #	LENGTH	RADIUS	DELTA	CHORD
C1	149.19'	250.00'	34° 11' 34"	S17° 05' 52"E 146.99'
C5	126.23'	211.50'	34° 11' 44"	N17° 05' 57"W 124.36'
C6	23.56'	15.00'	90° 00' 00"	S45° 00' 05"E 21.21'
C7	18.98'	27.50'	39° 32' 30"	S19° 46' 10"W 18.60'
C8	18.98'	27.50'	39° 32' 30"	N19° 46' 10"E 18.60'
C9	48.43'	50.00'	55° 29' 46"	N11° 47' 32"E 46.56'
C11	26.08'	31.50'	47° 26' 36"	N13° 49' 37"E 17.84'
C13	36.85'	75.00'	28° 09' 01"	S75° 55' 24"W 36.48'
C14	13.14'	12.00'	62° 44' 14"	N58° 37' 58"W 12.49'
C15	149.46'	136.50'	62° 44' 14"	S58° 37' 58"E 142.11'
C16	214.41'	136.50'	90° 00' 00"	S44° 59' 55"W 193.04'
C17	18.85'	12.00'	90° 00' 00"	S44° 59' 55"W 16.97'
C18	18.85'	12.00'	90° 00' 00"	N45° 00' 05"W 16.97'
C19	18.85'	12.00'	90° 00' 00"	S44° 59' 55"W 16.97'
C20	18.85'	12.00'	90° 00' 00"	N45° 00' 05"W 16.97'
C21	121.74'	77.50'	90° 00' 00"	S44° 59' 55"W 109.60'
C22	18.85'	12.00'	90° 00' 00"	S44° 59' 55"W 16.97'
C23	84.86'	77.50'	62° 44' 14"	S58° 37' 58"E 80.68'
C24	24.56'	12.00'	117° 15' 46"	N31° 22' 02"E 20.49'
C25	18.85'	12.00'	90° 00' 00"	S45° 00' 05"E 16.97'
C26	18.85'	12.00'	90° 00' 00"	N45° 00' 05"W 16.97'
C27	18.85'	12.00'	90° 00' 00"	S44° 59' 55"W 16.97'
C28	18.85'	12.00'	90° 00' 00"	N45° 00' 05"W 16.97'
C29	18.85'	12.00'	90° 00' 00"	N44° 59' 55"E 16.97'
C30	68.29'	139.00'	28° 09' 01"	N75° 55' 24"E 67.61'
C31	17.58'	12.00'	83° 57' 27"	S76° 10' 23"E 16.05'
C32	168.08'	107.00'	90° 00' 00"	S44° 59' 55"W 151.32'
C33	117.16'	107.00'	62° 44' 14"	N58° 37' 58"W 111.40'
C34	52.57'	107.00'	28°	