

7861052

7861052
04/03/2001 11:31 AM NO FEE
Book - 8441 Pg - 9069
GARY W. OTT
RECORDER, SALT LAKE COUNTY, UTAH
CITY OF DRAPER
12441 S 900 E
DRAPER UT 84020
BY: RDJ, DEPUTY - W1 1 P.

Name: ALLEGRO @ CORNER
CANYON STREET
DEDICATION RIGHT
OF WAY AND SLOPE
EASEMENT PLAT

Desc: 27-36-32, 27-36-41
27-36-376-005 & 007
27-36-328-017
27-36-403-012

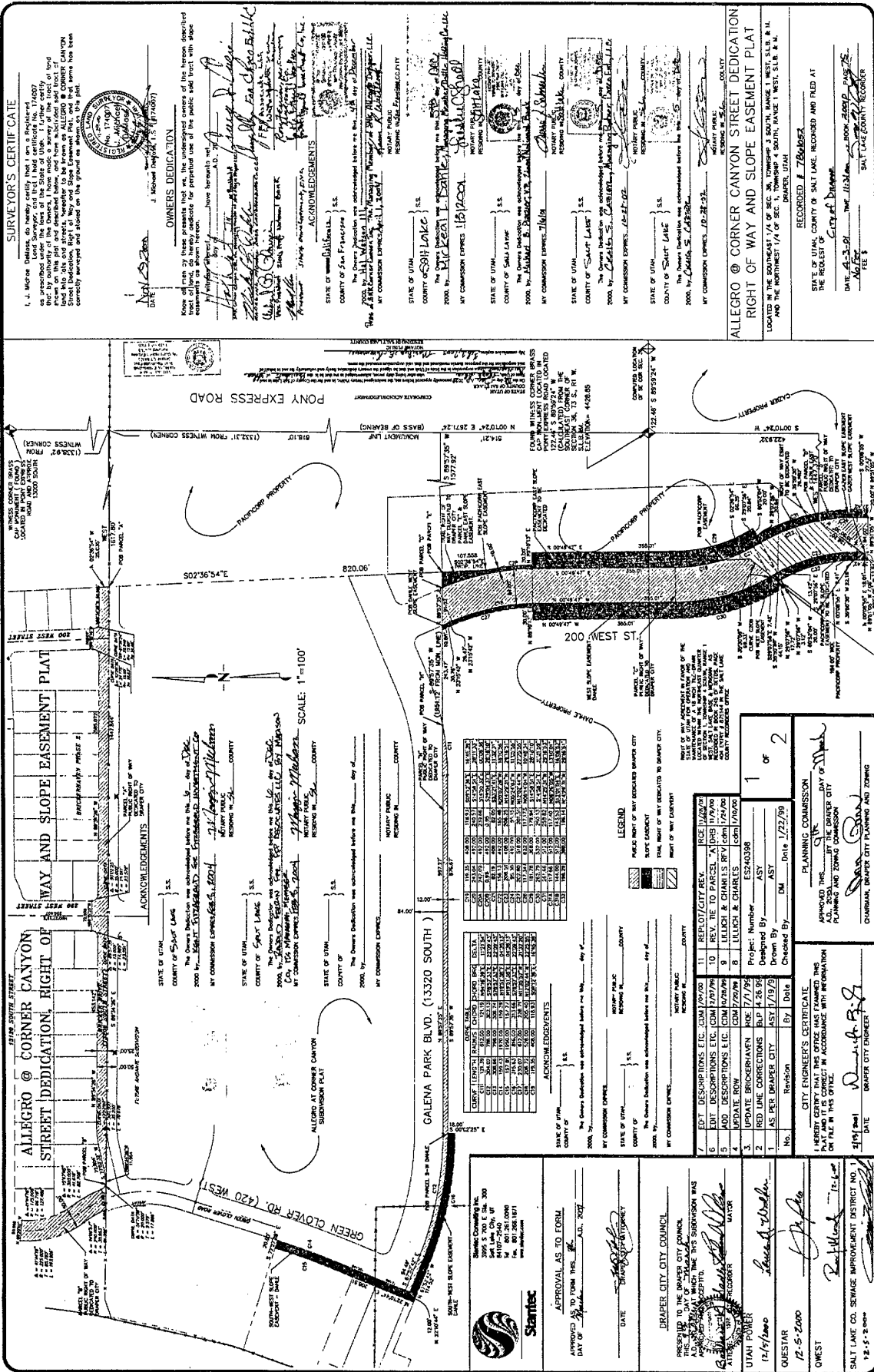
Fee: NO FEE

of Pages: TWO

PLAT

SEE ONLINE PLATS AT
[HTTP://REC.CO.SLC.UT.US/](http://rec.co.slc.ut.us/)

3K8441PG9069



SURVEYOR'S CERTIFICATE
I, Megra DeHaas, do hereby certify that I am a Registered Professional Engineer under the laws of the State of Utah. I further certify that I have reviewed the plat herein and that it is a true and correct representation of the facts and conditions on the ground as shown on the plat. The plat has been correctly prepared and filed in the office of the Salt Lake County Recorder.

DATE: 12/21/2007
MEGRA DEHAAS
1700 N. GARDEN
SALT LAKE CITY, UT 84103

OWNERS DEDICATION
I, Megra DeHaas, do hereby certify that I am a Registered Professional Engineer under the laws of the State of Utah. I further certify that I have reviewed the plat herein and that it is a true and correct representation of the facts and conditions on the ground as shown on the plat. The plat has been correctly prepared and filed in the office of the Salt Lake County Recorder.

ACKNOWLEDGMENTS
I, [Name], do hereby certify that I am a Registered Professional Engineer under the laws of the State of Utah. I further certify that I have reviewed the plat herein and that it is a true and correct representation of the facts and conditions on the ground as shown on the plat. The plat has been correctly prepared and filed in the office of the Salt Lake County Recorder.

ACKNOWLEDGMENTS
I, [Name], do hereby certify that I am a Registered Professional Engineer under the laws of the State of Utah. I further certify that I have reviewed the plat herein and that it is a true and correct representation of the facts and conditions on the ground as shown on the plat. The plat has been correctly prepared and filed in the office of the Salt Lake County Recorder.

ACKNOWLEDGMENTS
I, [Name], do hereby certify that I am a Registered Professional Engineer under the laws of the State of Utah. I further certify that I have reviewed the plat herein and that it is a true and correct representation of the facts and conditions on the ground as shown on the plat. The plat has been correctly prepared and filed in the office of the Salt Lake County Recorder.

ALLEGRO @ CORNER CANYON STREET DEDICATION
RIGHT OF WAY AND SLOPE EASEMENT PLAT
LOCATED BY THE SURVEYOR AT CORNER CANYON STREET AND SLOPE EASEMENT PLAT, BEING 1/4 SECTION 10, TOWNSHIP 4 SOUTH, RANGE 1 WEST, S.1.R. 4 N. & E.
RECORDED # 7264824
STATE OF UTAH, COUNTY OF SALT LAKE, RECORDED AND FILED AT THE OFFICE OF THE COUNTY RECORDER
DATE: 12/21/2007 TIME: 1:33 PM
BY: Megara DeHaas
SALT LAKE COUNTY RECORDER
FILE # _____

ALLEGRO @ CORNER CANYON STREET DEDICATION, RIGHT OF WAY AND SLOPE EASEMENT PLAT
SCALE: 1"=100'
I, Megra DeHaas, do hereby certify that I am a Registered Professional Engineer under the laws of the State of Utah. I further certify that I have reviewed the plat herein and that it is a true and correct representation of the facts and conditions on the ground as shown on the plat. The plat has been correctly prepared and filed in the office of the Salt Lake County Recorder.

ACKNOWLEDGMENTS
I, [Name], do hereby certify that I am a Registered Professional Engineer under the laws of the State of Utah. I further certify that I have reviewed the plat herein and that it is a true and correct representation of the facts and conditions on the ground as shown on the plat. The plat has been correctly prepared and filed in the office of the Salt Lake County Recorder.

ACKNOWLEDGMENTS
I, [Name], do hereby certify that I am a Registered Professional Engineer under the laws of the State of Utah. I further certify that I have reviewed the plat herein and that it is a true and correct representation of the facts and conditions on the ground as shown on the plat. The plat has been correctly prepared and filed in the office of the Salt Lake County Recorder.

CURVE	LENGTH	CHORD	CHORD BEARING	CHORD DISTANCE	AREA
1	12.25	12.25	S 0° 0' 0" W	12.25	0.00
2	12.25	12.25	S 90° 0' 0" W	12.25	0.00
3	12.25	12.25	S 0° 0' 0" W	12.25	0.00
4	12.25	12.25	S 90° 0' 0" W	12.25	0.00
5	12.25	12.25	S 0° 0' 0" W	12.25	0.00
6	12.25	12.25	S 90° 0' 0" W	12.25	0.00
7	12.25	12.25	S 0° 0' 0" W	12.25	0.00
8	12.25	12.25	S 90° 0' 0" W	12.25	0.00
9	12.25	12.25	S 0° 0' 0" W	12.25	0.00
10	12.25	12.25	S 90° 0' 0" W	12.25	0.00
11	12.25	12.25	S 0° 0' 0" W	12.25	0.00
12	12.25	12.25	S 90° 0' 0" W	12.25	0.00
13	12.25	12.25	S 0° 0' 0" W	12.25	0.00
14	12.25	12.25	S 90° 0' 0" W	12.25	0.00
15	12.25	12.25	S 0° 0' 0" W	12.25	0.00
16	12.25	12.25	S 90° 0' 0" W	12.25	0.00
17	12.25	12.25	S 0° 0' 0" W	12.25	0.00
18	12.25	12.25	S 90° 0' 0" W	12.25	0.00
19	12.25	12.25	S 0° 0' 0" W	12.25	0.00
20	12.25	12.25	S 90° 0' 0" W	12.25	0.00

LEGEND
SLOPE EASEMENT
RIGHT OF WAY DEDICATED TO DRAPER CITY
RIGHT OF WAY DEDICATED TO SALT LAKE COUNTY

PLANNING COMMISSION
APPROVED THIS 13th DAY OF March, 2007
PLANNING AND ZONING COMMISSION
CHURCH, DRAPER CITY PLANNING AND ZONING

APPROVAL AS TO FORM
DATE: 12/21/2007

DRAPER CITY COUNCIL
PRESENTED TO THE DRAPER CITY COUNCIL
THIS 12th DAY OF March, 2007.
APPROVED IN ACCORDANCE WITH REQUISITION
DATE: 12/21/2007

UTAH POWER
DATE: 12/21/2007
QUESTAR
12-5-Z000
OWEST

CITY ENGINEER'S CERTIFICATE
I, [Name], do hereby certify that I am a Registered Professional Engineer under the laws of the State of Utah. I further certify that I have reviewed the plat herein and that it is a true and correct representation of the facts and conditions on the ground as shown on the plat. The plat has been correctly prepared and filed in the office of the Salt Lake County Recorder.

PLANNING COMMISSION
APPROVED THIS 13th DAY OF March, 2007
PLANNING AND ZONING COMMISSION
CHURCH, DRAPER CITY PLANNING AND ZONING

27-9834-1
87-36-316-003.001
403-002
508-017

2001 P-75

