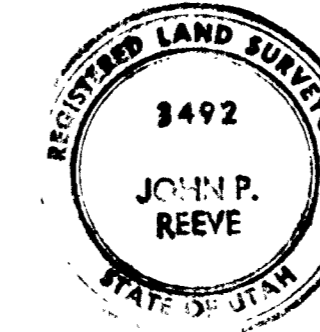


PRELIMINARY PLAN OF OQUIRRH VIEW SUBDIVISION

A PART OF THE S.W. 1/4 OF SECTION 23, T.5 N., R.1 W., S.L.B. & M.
WEBER COUNTY, UTAH



SURVEYORS CERTIFICATE

I, JOHN P. REEVE, A REGISTERED LAND SURVEYOR IN THE STATE OF UTAH, DO HEREBY CERTIFY THAT THIS PLAT OF OQUIRRH VIEW SUBDIVISION, WEBER COUNTY, UTAH HAS BEEN CORRECTLY DRAWN TO THE DESIGNATED SCALE AND IS A TRUE AND CORRECT REPRESENTATION OF THE FOLLOWING DESCRIPTION OF LANDS INCLUDED IN SAID SUBDIVISION BASED ON DATA COMPILED FROM RECORDS IN THE WEBER COUNTY RECORDERS OFFICE, AND OF A SURVEY MADE ON THE GROUND.
SIGNED THIS 18 DAY OF APRIL, 1978.

3492
LICENSE NO.

John P. Reeve
SIGNATURE

OWNERS DEDICATION

WE, THE UNDERSIGNED OWNERS OF THE HEREON DESCRIBED TRACT OF LAND HEREBY SET APART AND SUBDIVIDE THE SAME INTO LOTS AND STREETS AS SHOWN ON THIS PLAT AND NAME SAID TRACT OQUIRRH VIEW SUBDIVISION AND HEREBY DEDICATE, GRANT, AND CONVEY TO WEBER COUNTY, UTAH ALL THOSE PARTS OR PORTIONS OF SAID TRACT OF LAND DESIGNATED AS STREETS, THE SAME TO BE USED AS PUBLIC THOROUGHFARES FOREVER, AND ALSO DEDICATE TO WEBER COUNTY THOSE CERTAIN STRIPS AS EASEMENTS FOR PUBLIC UTILITY AND DRAINAGE PURPOSES AS SHOWN HEREON, THE SAME TO BE USED FOR THE INSTALLATION, MAINTENANCE, AND OPERATION OF PUBLIC UTILITY SERVICE LINES AND DRAINAGE AS MAY BE AUTHORIZED BY WEBER COUNTY. SIGNED THIS DAY OF _____, 1978.

Bruce L. Nilson *Susan W. Nilson*
BRUCE L. NILSON SUSAN W. NILSON
Gary G. Penrod *Elaine D. Penrod*
GARY G. PENROD ELAINE D. PENROD

Max J. Rhee *Jay Rhee*
WEBER COUNTY BOARD OF EDUCATION CHAIRMAN
ATTEST

ACKNOWLEDGEMENT

STATE OF UTAH
COUNTY OF WEBER
ON THE 24th DAY OF MAY, 1978, PERSONALLY APPEARED BEFORE ME MAX J. RHEE, JAY RHEES, AND AFTER BEING DULY SWORN ACKNOWLEDGED TO ME THEY ARE PRESIDENT AND ASST. Supt. OF SAID CORPORATION AND THAT THEY SIGNED THE OWNERS DEDICATION FREELY, VOLUNTARILY AND IN BEHALF OF SAID CORPORATION FOR THE PURPOSES THEREIN MENTIONED.

OCTOBER 15, 1980
COMMISSION EXPIRES

Neil J. Steinhilber
NOTARY PUBLIC

ACKNOWLEDGEMENT

STATE OF UTAH
COUNTY OF WEBER
ON THE 19th DAY OF May, 1978, PERSONALLY APPEARED BEFORE ME, THE UNDERSIGNED NOTARY PUBLIC, BRUCE L. NILSON (AND) SUSAN W. NILSON, SIGNER(S) OF THE ABOVE OWNERS DEDICATION, WHO DULY ACKNOWLEDGED TO ME THEY SIGNED IT FREELY AND VOLUNTARILY AND FOR THE PURPOSES THEREIN MENTIONED.

Sept. 29, 1981
COMMISSION EXPIRES

Helen J. Reeve
NOTARY PUBLIC

BOUNDARY DESCRIPTION

A PART OF THE S.W. 1/4 OF SECTION 23, T.5 N., R.1 W., S.L.B. & M. BEGINNING AT A POINT WHICH IS S 89° 35' E, 998.44 FEET AND S 0° 21' W, 609.78 FEET FROM THE N.W. CORNER OF THE S.W. 1/4 OF SAID SECTION 23. RUNNING THENCE EAST, 60 FEET; THENCE N 0° 21' E, 88.73 FEET; THENCE S 89° 20' E, 270.0 FEET; THENCE S 0° 21' W, 795.72 FEET; THENCE N 89° 36' 30" W, 330.00 FEET; THENCE N 0° 21' E, 707.88 TO THE POINT OF BEGINNING. CONTAINS 5.94 ACRES.

ACKNOWLEDGEMENT

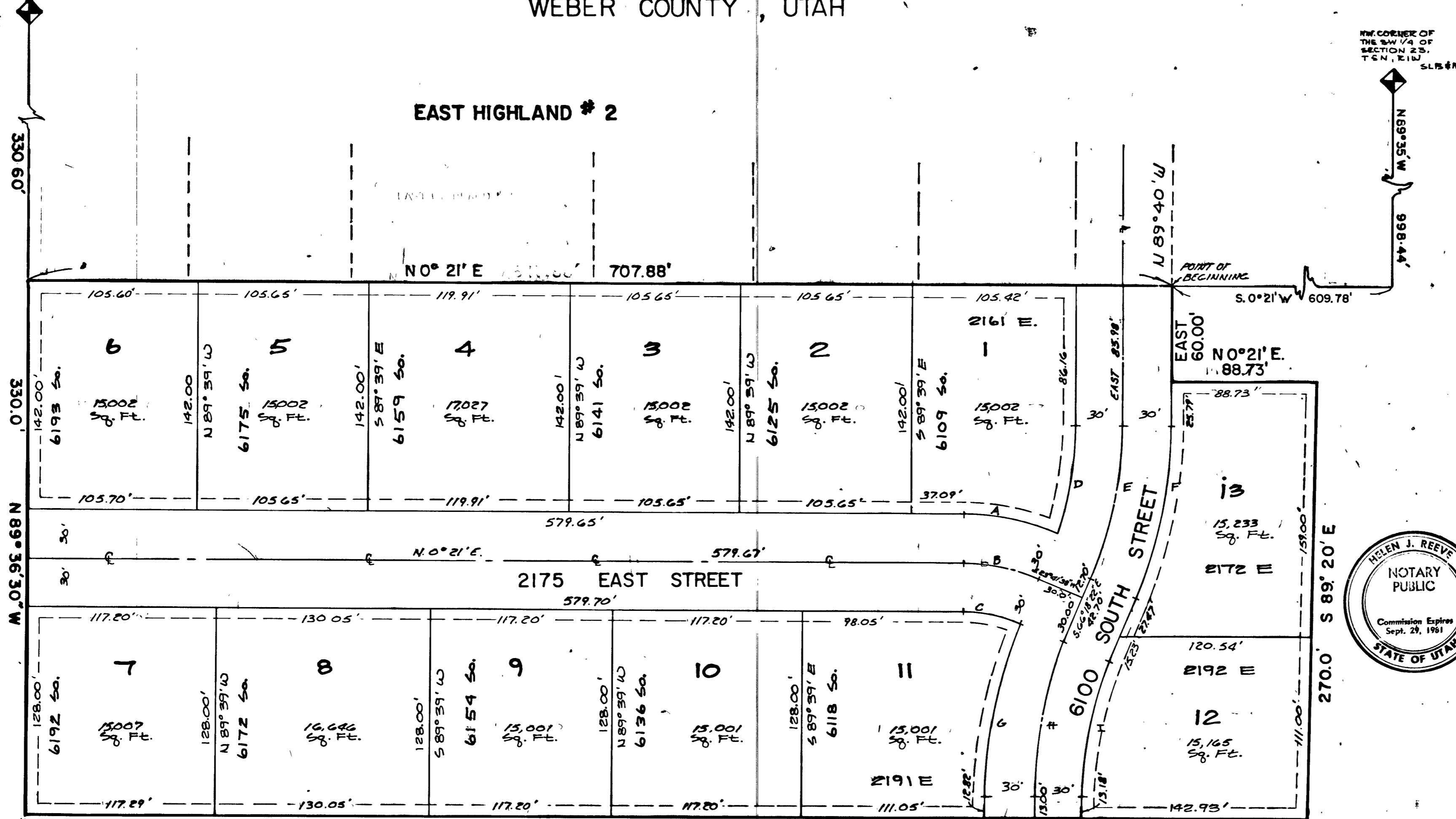
STATE OF UTAH
COUNTY OF WEBER
ON THE 19th DAY OF May, 1978, PERSONALLY APPEARED BEFORE ME, THE UNDERSIGNED NOTARY PUBLIC, GARY G. PENROD AND ELAINE D. PENROD, SIGNERS OF THE ABOVE OWNERS DEDICATION, WHO DULY ACKNOWLEDGED TO ME THEY SIGNED IT FREELY AND VOLUNTARILY AND FOR THE PURPOSES THEREIN MENTIONED.

Sept. 29, 1981
COMMISSION EXPIRES

Helen J. Reeve
NOTARY PUBLIC

SW CORNER OF THE EAST 1/4 OF THE W 1/4 OF SECTION 23, T.5 N., R.1 W., SALT LAKE BASE AND MERIDIAN

NW CORNER OF THE SW 1/4 OF SECTION 23, T.5 N., R.1 W., S.L.B. & M.



EASTWOOD #7

- (A) R = 178.04', Δ = 23° 03' 56", L = 59.60', C = 59.19', T = 30.21', Ch = N. 11° 56' 58" E.
- (B) R = 178.04', Δ = 23° 20' 38", L = 48.09', C = 47.76', T = 18.19', Ch = N. 12° 01' 18" E.
- (C) R = 88.04', Δ = 23° 20' 38", L = 35.87', C = 35.62', T = 18.19', Ch = N. 12° 01' 18" E.
- (D) R = 208.36', Δ = 18° 55' 54", L = 68.85', C = 68.53', T = 34.72', Ch = S. 20° 32' 03" E.
- (E) R = 208.36', Δ = 23° 41' 38", L = 98.57', C = 97.87', T = 50.00', Ch = N. 78° 09' 11" W.
- (F) R = 208.36', Δ = 23° 41' 38", L = 110.98', C = 110.19', T = 50.29', Ch = N. 78° 09' 11" W.
- (G) R = 208.36', Δ = 23° 41' 38", L = 110.98', C = 110.19', T = 50.29', Ch = S. 78° 09' 15" E.
- (H) R = 208.36', Δ = 23° 41' 38", L = 98.57', C = 97.87', T = 50.00', Ch = S. 78° 09' 15" E.
- (I) R = 208.36', Δ = 23° 41' 38", L = 86.10', C = 85.55', T = 43.71', Ch = S. 78° 09' 15" E.

This map is provided solely for the purpose of assisting in locating the property and Cottonwood Title Insurance Agency, Inc. assumes no liability for variation, if any, with any actual survey.

VALLEY ENGINEERING, INC.
CIVIL AND ENVIRONMENTAL ENGINEERING
LAND PLANNING AND SITE DESIGN
LAND SURVEYING

PLANNING COMMISSION

APPROVED BY THE WEBER COUNTY PLANNING COMMISSION ON THE 15 DAY OF JUNE, 1978
Haynes Fuller
CHAIRMAN

COUNTY ENGINEER

I HEREBY CERTIFY THAT I HAVE CAREFULLY INVESTIGATED THE LINES OF SURVEY OF THE FOREGOING PLAT AND LEGAL DESCRIPTION OF THE LAND EMBRACED THEREIN, AND FIND THEM TO BE CORRECT AND TO AGREE WITH THE LINES AND MONUMENTS ON RECORD IN THIS OFFICE.
SIGNED THIS 22 DAY OF JUNE, 1978
Fred W. Matrain
SIGNATURE

COUNTY APPROVAL

THIS IS TO CERTIFY THAT THIS PLAT AND DEDICATION OF THIS PLAT WERE DULY APPROVED AND ACCEPTED BY THE COUNTY COMMISSION OF WEBER COUNTY, UTAH THIS 23rd DAY OF JUNE, 1978
ATTEST: *Deputy Clerk*
TITLE: DEPUTY CLERK

COUNTY ATTORNEY

I HEREBY CERTIFY THAT THE REQUIREMENTS OF ALL APPLICABLE STATUTES AND ORDINANCES PREREQUISITE TO APPROVAL OF OQUIRRH VIEW SUBDIVISION PLAT AND DEDICATIONS HAVE BEEN COMPLIED WITH. DATED THIS 29th DAY OF JUNE, 1978
Robert L. Reeve
COUNTY ATTORNEY

744097 \$1650

FILED AND RECORDED FOR
Bruce L. Nilson
1978 JUN 29 AM 10 26
In Book 21 of Plate Page 61
RUTH EAMES OLSEN
WEBER COUNTY RECORDER
DEPUTY *Wendy Johnson*