

# THE RIDGE AT SOUTH JORDAN PHASE II

This map is provided solely for the purpose of assisting in locating the property and Cottonwood Title Insurance Agency, Inc. assumes no liability for variation, if any, with any actual survey.

## SURVEYOR'S CERTIFICATE

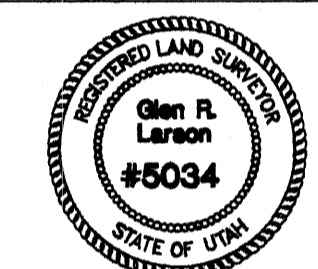
I, GLEN R. LARSON, do hereby certify that I am a registered land surveyor and that I hold certificate No. 5034, as prescribed under the laws of the State of Utah. I further certify that by the authority of the Owners, I have made a survey of the tract of land shown on this plat and described below, and have subdivided said tract of land into lots and streets, hereafter to be known as

### THE RIDGE AT SOUTH JORDAN PHASE II

and that same has been correctly surveyed and staked on the ground as shown on this plat.

COURSE	DISTANCE	BOUNDARY DESCRIPTION	REMARKS
		BEGINNING AT A POINT 1302.47' N 89°27'10" E ALONG THE QUARTER SECTION LINE FROM THE WEST QUARTER CORNER OF SECTION 23, TOWNSHIP 3 SOUTH, RANGE 1 WEST, SALT LAKE BASE & MERIDIAN; THENCE	
N 89°27'10" E	1842.56'	THENCE	
S 15°10'11" W	412.36'	THENCE	
EAST	384.57'	THENCE	
S 9°16'51" E	433.76'	THENCE	
S 87°46'00" W	56.16'	THENCE	
S 24°18'00" W	71.59'	THENCE	
S 88°50'00" W	1255.63'	THENCE	
S 88°50'00" W	14.57'	THENCE	
N 89°50'23" W	451.20'	THENCE	
N 35°16'44" W	572.83'	THENCE	
N 15°22'26" W	78.50'	THENCE	
N 0°32'50" W	112.90'	THENCE	
N 14°03'20" E	50.00'	TO A 425.00' RADIUS CURVE TO THE LEFT; THENCE	
WESTERLY	62.96'	DELTA=8°29'18" CHORD BEARS N 80°11'59" W 62.91'; THENCE	
N 5°33'42" E	188.48'	TO THE POINT OF BEGINNING, AND CONTAINING 38.7927 ACRES. LESS AND EXCEPTING THE FOLLOWING DESCRIBED PARCEL:	
		LESS AND EXCEPTING: BEGINNING AT A POINT 2385.00' N 89°27'10" E AND 237.00' S 0°32'50" E FROM THE WEST QUARTER CORNER OF SECTION 23, TOWNSHIP 3 SOUTH, RANGE 1 WEST, SALT LAKE BASE & MERIDIAN; THENCE	
S 0°32'50" E	473.92'	THENCE	
WEST	200.54'	TO A 375.00' RADIUS CURVE TO THE RIGHT; THENCE	
WESTERLY	149.10'	DELTA=22°46'51" CHORD BEARS N 78°36'34" W 146.12'; THENCE	
NORTHWESTERLY	26.09'	ALONG A 15.00' RADIUS CURVE TO THE RIGHT	
NORTHERLY	96.83'	DELTA=99°38'15" CHORD BEARS N 17°24'01" W 22.92'; THENCE	
		ALONG A 168.29' RADIUS CURVE TO THE LEFT	
		DELTA=32°57'56" CHORD BEARS N 15°58'08" E 95.50'; THENCE	
N 0°32'50" W	312.86'	TO A 15.00' RADIUS CURVE TO THE RIGHT, THENCE	
NORTHEASTERLY	23.56'	DELTA=90°00'00" CHORD BEARS N 44°27'10" E 21.21' THENCE	
N 89°27'10" E	310.00'	TO THE POINT OF BEGINNING.	
		CONTAINING 56 LOTS ON 35.2927 ACRES.	

Glen R. Larson  
GLEN R. LARSON CERT. NO. 5034  
DATE July 18, 1996



### OWNER DEDICATION

Know all men by these presents that Mark T. Woolley, the undersigned owner (s) of the above described tract of land, having caused same to be subdivided into lots and streets, hereafter to be known as

### THE RIDGE AT SOUTH JORDAN PHASE II

do hereby dedicate for perpetual use of the public all parcels of land shown on this plat and intended for public use. In witness whereof we have hereunto set our hands this 30th day of July A.D., 1996.

Mark T. Woolley RADMAN AN INDIVIDUAL  
Mark T. Woolley RADMAN ENTERPRISES L.C. BY IVAN RADMAN  
Woolley Robison Homes & Development  
BY MARK T. WOOLLEY

### CORPORATE ACKNOWLEDGMENT

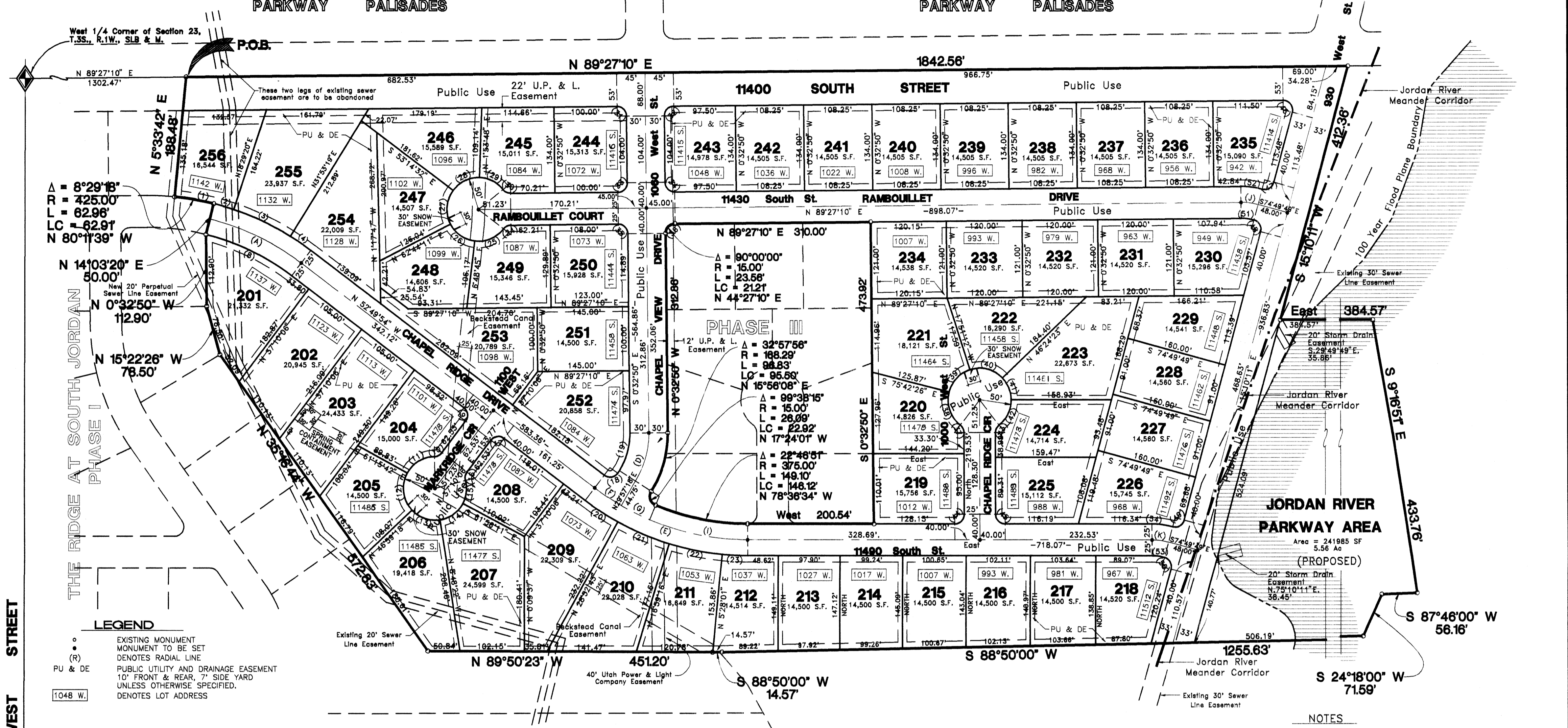
STATE OF UTAH  
COUNTY OF SALT LAKE } ss  
On the 30th day of July A.D., 1996, personally appeared before me, Ivan Radman who being by me duly sworn or affirmed, did say that he is the owner/managing member of Radman Enterprises L.C. and that the herein Owner's Dedication was signed in behalf of said owner/managing member/limited company and the said Ivan Radman executed the same.

Paula Lowery Notary Public  
STATE OF UTAH  
COUNTY OF SALT LAKE } ss  
On the 30th day of July A.D., 1996, personally appeared before me, the undersigned Notary Public, in and for said county and state, the signer (S) of the above Owner's Dedication, I in number who duly acknowledged to me that they signed it freely and voluntarily and for the uses and purposes therein mentioned.

Paula Lowery Notary Public  
STATE OF UTAH  
COUNTY OF SALT LAKE } ss  
On the 30th day of July A.D., 1996, personally appeared before me, the undersigned Notary Public, in and for said county and state, the signer (S) of the above Owner's Dedication, I in number who duly acknowledged to me that they signed it freely and voluntarily and for the uses and purposes therein mentioned.

### THE RIDGE AT SOUTH JORDAN PHASE II

RECORDED # 7114000  
June 25, 1996



(A) Δ = 2307°07' R = 400.00' L = 161.40' LC = 180.31' N 64°23'28" W	(G) Δ = 71°02'27" R = 400.00' L = 50.08' LC = 50.05' S 63°37'56" E	(14) Δ = 53°07'48" R = 15.00' L = 46.36' N 89°27'10" E	(19) Δ = 35°19'39" R = 15.00' L = 66.77' N 89°27'10" E	(24) Δ = 52°01'12" R = 15.00' L = 13.62' N 89°27'10" E	(29) Δ = 49°34'34" R = 15.00' L = 43.26' N 89°27'10" E	(34) Δ = 90°00'00" R = 23.56' L = 50.49' N 89°27'10" E	(39) Δ = 57°51'15" R = 15.00' L = 50.49' N 89°27'10" E	(44) Δ = 90°00'00" R = 15.00' L = 23.56' N 89°27'10" E	(49) Δ = 74°49'49" R = 15.00' L = 19.59' N 89°27'10" E
(B) Δ = 32°57'56" R = 138.29' L = 78.57' LC = 78.47' N 15°58'08" E	(H) Δ = 22°46'51" R = 400.00' L = 159.04' LC = 157.99' S 78°36'34" E	(15) Δ = 42°58'20" R = 15.00' L = 13.62' N 89°27'10" E	(20) Δ = 52°01'12" R = 15.00' L = 13.62' N 89°27'10" E	(25) Δ = 42°54'56" R = 15.00' L = 37.45' N 89°27'10" E	(30) Δ = 81°7'23" R = 15.00' L = 51.82' N 89°27'10" E	(35) Δ = 59°22'47" R = 15.00' L = 18.92' N 89°27'10" E	(40) Δ = 52°01'12" R = 15.00' L = 23.56' N 89°27'10" E	(45) Δ = 64°15'34" R = 15.00' L = 58.08' N 89°27'10" E	(50) Δ = 90°00'00" R = 15.00' L = 27.83' N 89°27'10" E
(C) Δ = 32°57'56" R = 138.29' L = 78.57' LC = 78.47' N 15°58'08" E	(I) Δ = 22°46'51" R = 400.00' L = 159.04' LC = 157.99' S 78°36'34" E	(16) Δ = 13°24'00" R = 425.00' L = 52.75' N 89°27'10" E	(21) Δ = 60°27'00" R = 50.00' L = 52.75' N 89°27'10" E	(26) Δ = 52°01'12" R = 15.00' L = 13.62' N 89°27'10" E	(31) Δ = 11°53'26" R = 425.00' L = 88.20' N 89°27'10" E	(36) Δ = 58°55'26" R = 50.00' L = 48.80' N 89°27'10" E	(41) Δ = 90°00'00" R = 15.00' L = 23.56' N 89°27'10" E	(46) Δ = 43°35'37" R = 15.00' L = 38.04' N 89°27'10" E	(51) Δ = 105°43'01" R = 15.00' L = 20.57' N 89°27'10" E
(D) Δ = 32°57'56" R = 138.29' L = 78.57' LC = 78.47' N 15°58'08" E	(J) Δ = 15°10'11" R = 100.00' L = 27.43' LC = 25.98' S 82°41'11" E	(17) Δ = 51°16'48" R = 425.00' L = 39.18' N 89°27'10" E	(22) Δ = 11°53'26" R = 425.00' L = 88.20' N 89°27'10" E	(27) Δ = 90°00'00" R = 15.00' L = 23.56' N 89°27'10" E	(32) Δ = 11°53'26" R = 425.00' L = 88.20' N 89°27'10" E	(37) Δ = 64°01'18" R = 50.00' L = 55.87' N 89°27'10" E	(42) Δ = 90°00'00" R = 15.00' L = 23.56' N 89°27'10" E	(47) Δ = 52°01'12" R = 15.00' L = 45.20' N 89°27'10" E	(52) Δ = 74°18'59" R = 15.00' L = 19.45' N 89°27'10" E
(E) Δ = 37°10'06" R = 400.00' L = 259.48' LC = 254.98' S 71°24'57" E	(K) Δ = 15°10'11" R = 100.00' L = 27.43' LC = 25.98' S 82°41'11" E	(18) Δ = 52°07'08" R = 375.00' L = 151.31' N 89°27'10" E	(23) Δ = 92°23'17" R = 15.00' L = 24.19' N 89°27'10" E	(28) Δ = 58°08'20" R = 50.00' L = 48.12' N 89°27'10" E	(33) Δ = 58°08'20" R = 50.00' L = 48.12' N 89°27'10" E	(38) Δ = 86°18'46" R = 15.00' L = 57.87' N 89°27'10" E	(43) Δ = 90°00'00" R = 15.00' L = 23.56' N 89°27'10" E	(48) Δ = 52°01'12" R = 15.00' L = 13.62' N 89°27'10" E	(53) Δ = 105°43'01" R = 15.00' L = 27.88' N 89°27'10" E
(F) Δ = 7°12'48" R = 400.00' L = 50.36' LC = 50.33' S 56°28'18" E	(L) Δ = 15°10'11" R = 100.00' L = 27.43' LC = 25.98' S 82°41'11" E	(19) Δ = 53°07'48" R = 15.00' L = 46.36' N 89°27'10" E	(24) Δ = 52°01'12" R = 15.00' L = 13.62' N 89°27'10" E	(29) Δ = 49°34'34" R = 15.00' L = 43.26' N 89°27'10" E	(34) Δ = 90°00'00" R = 23.56' L = 50.49' N 89°27'10" E	(39) Δ = 57°51'15" R = 15.00' L = 50.49' N 89°27'10" E	(44) Δ = 90°00'00" R = 15.00' L = 23.56' N 89°27'10" E	(49) Δ = 74°49'49" R = 15.00' L = 19.59' N 89°27'10" E	(54) Δ = 15°10'11" R = 125.00' L = 33.10' N 89°27'10" E

DESIGNED BY MOUNTAINLAND ENGINEERING  
12222 South 1000 East Suite 3  
Draper, Utah 84020  
(801) 576-0075 FAX 576-9453

DEVELOPED BY WOOLLEY ROBISON DEVELOPMENT  
9809 SOUTH FARMSTEAD CIRCLE  
SOUTH JORDAN, UTAH 84095  
(801) 254-5601

IMPORTANT NOTICE  
Many areas in South Jordan have ground water problems due to a seasonally high (fluctuating) water table. Approval of this plat does not constitute representation by the City that building at any specified elevation will solve ground water problems. Solution of these problems is the sole responsibility of the permit applicant and property owner.

CORPORATE ACKNOWLEDGMENT  
STATE OF UTAH  
COUNTY OF SALT LAKE } ss  
On the 30th day of July A.D., 1996, personally appeared before me, Mark T. Woolley who being by me duly sworn or affirmed, did say that he is the PRESIDENT of Woolley Robison Homes & Dev. and that the herein Owner's Dedication was signed in behalf of said corporation and the said Woolley Robison Homes & Dev. executed the same.

UTAH POWER & LIGHT CO. APPROVED THIS 22 DAY OF July A.D., 1996.  
MOUNTAIN FUEL SUPPLY CO. APPROVED THIS 22 DAY OF JULY A.D., 1996.  
U.S. WEST COMMUNICATIONS APPROVED THIS 22 DAY OF JULY A.D., 1996.  
TCL CABLEVISION APPROVED THIS 22 DAY OF July A.D., 1996.  
BECKSTEAD CANAL CO. APPROVED THIS 30 DAY OF July A.D., 1996.

PLANNING COMMISSION APPROVED THIS 12 DAY OF June A.D., 1996.  
BOARD OF HEALTH APPROVED THIS 26 DAY OF July A.D., 1996.  
IMPROVEMENT DISTRICT APPROVED THIS 6 DAY OF August A.D., 1996.  
FLOOD CONTROL DEPARTMENT APPROVED THIS 29th DAY OF July A.D., 1996.  
CITY ENGINEER I HEREBY CERTIFY THAT THIS OFFICE HAS EXAMINED THIS PLAT AND IT IS CORRECT IN ACCORDANCE WITH INFORMATION ON FILE IN THIS OFFICE.

APPROVAL AS TO FORM APPROVED THIS 25th DAY OF July A.D., 1996.  
CITY COUNCIL PRESENTED TO THE SOUTH JORDAN CITY COUNCIL THIS 7 DAY OF October A.D., 1996.  
APPROVAL AS TO FORM APPROVED THIS 25th DAY OF July A.D., 1996.

RECORDED # 7114000  
STATE OF UTAH, COUNTY OF SALT LAKE, RECORDED AND FILED AT THE REQUEST OF SOUTH JORDAN  
DATE 10-8-98 TIME 2:31 PM. BOOK 98-10P. PAGE 283  
\$37.00 FEE CHIEF DEPT. SALT LAKE COUNTY RECORDER