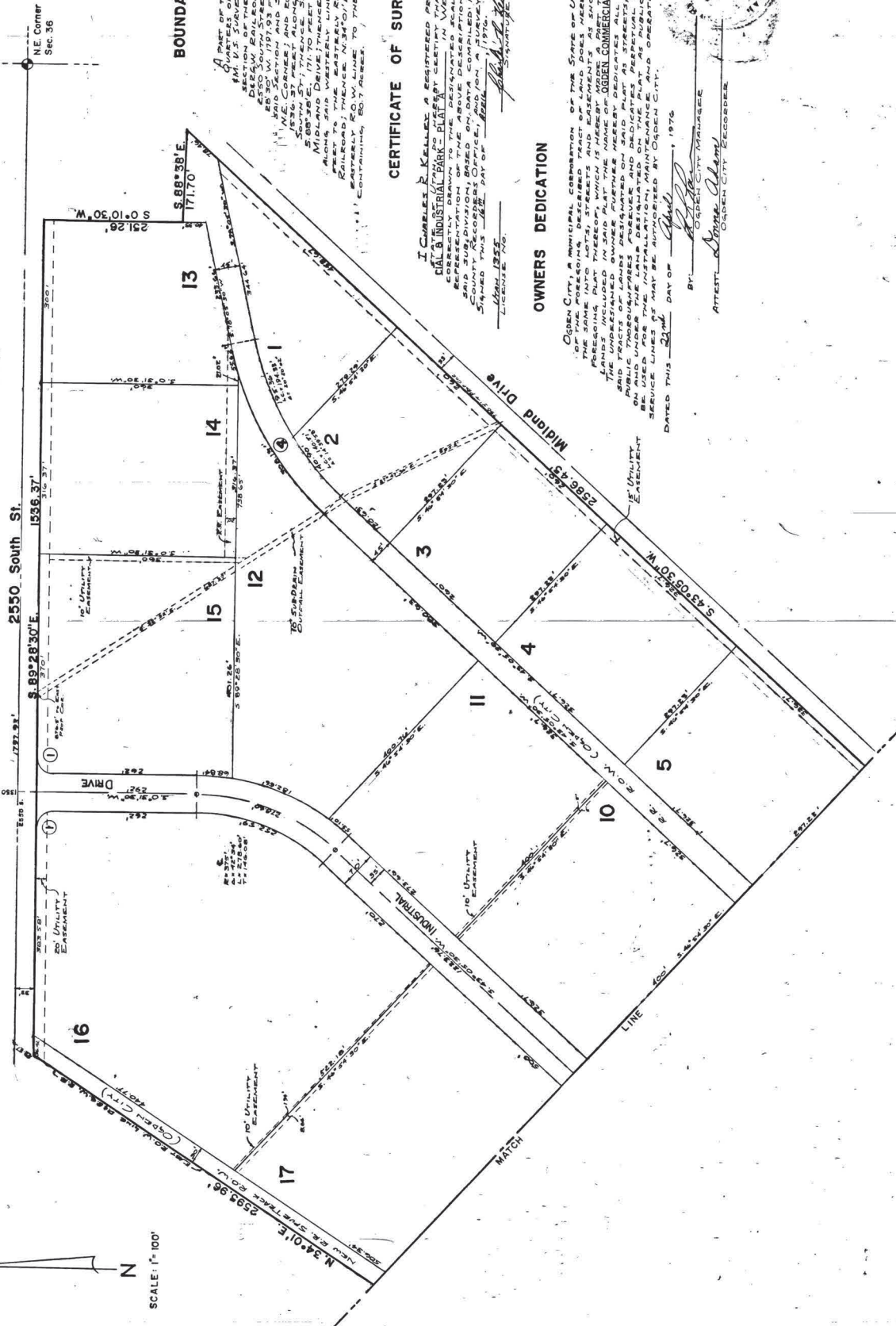


OGDEN COMMERCIAL & INDUSTRIAL PARK - PLAT 'A' PART OF THE NE 1/4 & NW 1/4 OF SEC. 36-T6N-R2W-SLB&M



BOUNDARY DESCRIPTION

A PART OF THE NORTHEAST AND NORTHWEST QUARTERS OF SECTION 36, T6N, R2W, SLB&M, DEED RECORDS IN WEBER COUNTY, UTAH, ARE BY THIS PLAT DIVIDED INTO 17 LOTS. THE BOUNDARY DESCRIPTION OF THE EAST ROW AND THE SOUTH LINE OF LOT 13 IS AS FOLLOWS: S. 88° 28' E. 171.70' ALONG THE SOUTH LINE OF SECTION 36, T6N, R2W, SLB&M, DEED RECORDS IN WEBER COUNTY, UTAH, TO THE CORNER AND S. 31° 01' W. 292.71' ALONG THE NORTH LINE OF LOT 13 TO THE POINT OF BEGINNING. THE BOUNDARY DESCRIPTION OF THE SOUTH LINE OF LOT 14 IS AS FOLLOWS: S. 88° 28' E. 171.70' ALONG THE SOUTH LINE OF SECTION 36, T6N, R2W, SLB&M, DEED RECORDS IN WEBER COUNTY, UTAH, TO THE CORNER AND S. 31° 01' W. 292.71' ALONG THE NORTH LINE OF LOT 14 TO THE POINT OF BEGINNING. THE BOUNDARY DESCRIPTION OF THE SOUTH LINE OF LOT 15 IS AS FOLLOWS: S. 88° 28' E. 171.70' ALONG THE SOUTH LINE OF SECTION 36, T6N, R2W, SLB&M, DEED RECORDS IN WEBER COUNTY, UTAH, TO THE CORNER AND S. 31° 01' W. 292.71' ALONG THE NORTH LINE OF LOT 15 TO THE POINT OF BEGINNING. THE BOUNDARY DESCRIPTION OF THE SOUTH LINE OF LOT 16 IS AS FOLLOWS: S. 88° 28' E. 171.70' ALONG THE SOUTH LINE OF SECTION 36, T6N, R2W, SLB&M, DEED RECORDS IN WEBER COUNTY, UTAH, TO THE CORNER AND S. 31° 01' W. 292.71' ALONG THE NORTH LINE OF LOT 16 TO THE POINT OF BEGINNING. THE BOUNDARY DESCRIPTION OF THE SOUTH LINE OF LOT 17 IS AS FOLLOWS: S. 88° 28' E. 171.70' ALONG THE SOUTH LINE OF SECTION 36, T6N, R2W, SLB&M, DEED RECORDS IN WEBER COUNTY, UTAH, TO THE CORNER AND S. 31° 01' W. 292.71' ALONG THE NORTH LINE OF LOT 17 TO THE POINT OF BEGINNING.

CERTIFICATE OF SURVEY

I, GABRIEL R. KELLEY, A REGISTERED PROFESSIONAL ENGINEER, HAVE MADE A CAREFUL AND THOROUGH SURVEY OF THE ABOVE DESCRIBED LANDS IN WEBER COUNTY, UTAH, AND HAVE FOUND THAT THE REPRESENTATION OF THE ABOVE DESCRIPTION OF LANDS INCLUDED HEREIN IS CORRECT AND ACCURATE. I HAVE COMPARED THE DATA OBTAINED FROM RECORDS IN THE WEBER COUNTY RECORDS ON THIS DATE WITH THE DATA OBTAINED FROM THE SURVEY MADE ON THE GROUND. SIGNED THIS 24th DAY OF APRIL, 1976.

GABRIEL R. KELLEY
REGISTERED PROFESSIONAL ENGINEER
LICENSE NO. 1111

OWNERS DEDICATION

OGDEN CITY, A MUNICIPAL CORPORATION OF THE STATE OF UTAH, THE UNDERSIGNED OWNER OF THE SAME INTO LOTS, STREETS AND EASEMENTS, HEREBY SET APART AND DEDICATE TO THE PUBLIC USE OF SAID CITY THE ABOVE DESCRIBED LANDS AND EASEMENTS. THE UNDERSIGNED OWNER FURTHER HEREBY DEDICATES TO THE PUBLIC USE OF SAID CITY THE TRACTS OF LANDS DESIGNATED ON SAID PLAT AS STREETS, THE SAME TO BE USED AS PAVED STREETS AND UNDER THE LAW DESIGNATED ON THE PLAT AS UTILITY RIGHTS AND EASEMENT OVER, ON AND UNDER THE INSTALLATION, MAINTENANCE AND OPERATION OF PUBLIC UTILITY SERVICE LINES THAT MAY BE LOCATED BY OGDEN CITY.

DATED THIS 24th DAY OF APRIL, 1976.

BY: _____
OGDEN CITY MANAGER

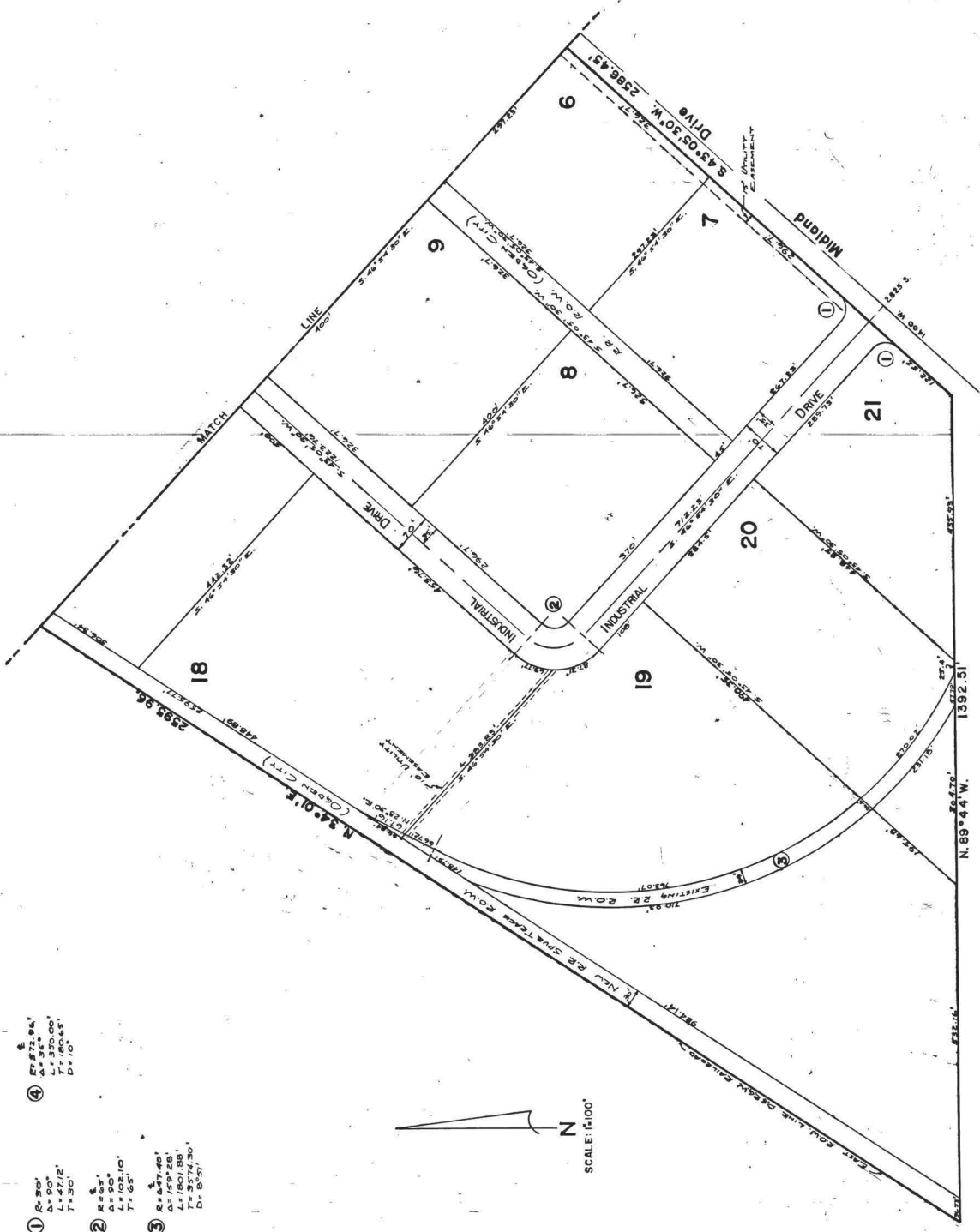
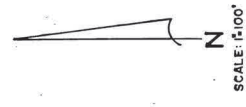
ATTEST: _____
OGDEN CITY RECORDER

Page 1 of 2 Pages

669921
FILED AND RECORDED FOR
OGDEN CITY
1976 APR 9 PM 2 51
In Book 19 of Plans, Page 70
RUTH EAMES OLSEN
WEBER COUNTY RECORDER
P.O. Box 100, Ogden, Utah

CURVE DATA

- ① R=20'
Δ=90°
L=47.12'
T=30'
- ② R=53'
Δ=90°
L=107.00'
T=68'
- ③ R=47.40'
Δ=159°28'
L=180.88'
T=82.37'
- ④ R=272.94'
Δ=86°00'
L=180.84'
D=10'



OGDEN CITY ENGINEER'S APPROVAL

I HEREBY CERTIFY THAT I HAVE CAREFULLY INVESTIGATED THE PROPOSED PLAT AND FOUND THAT THE DESCRIPTION OF THE LANDS EMPLOYED THEREIN, AND FOUND THEM TO BE CORRECT AND ACCORD WITH THE LINES AND MONUMENTS APPROVED BY THE ENGINEERING DEPARTMENT OFFICE, AND HEREBY APPROVE SAID PLAT.

SIGNED THIS 22nd DAY OF APRIL, 1976

[Signature]
 OGDEN CITY ENGINEER
 OGDEN CITY PUBLIC WORKS DIRECTOR

OGDEN CITY ATTORNEY'S APPROVAL

I HAVE EXAMINED THE APPROVED PLAT OF OGDEN COMMERCIAL & INDUSTRIAL PARK - PLAT "A" AND IN MY OPINION IT CONFORMS WITH THE OGDEN CITY ORDINANCE APPLICABLE THERETO AND NOW IN FORCE.

SIGNED THIS 22nd DAY OF APRIL, 1976

[Signature]
 OGDEN CITY ATTORNEY

OGDEN CITY MANAGER'S APPROVAL

I HEREBY CERTIFY THAT THE REQUIREMENTS OF ALL APPLICABLE ORDINANCES AND REGULATIONS OF THE OGDEN CITY ENGINEERING DEPARTMENT AND THE OGDEN CITY COUNCIL OF THE FOREGOING PLAT AND DECISIONS HAVE BEEN COMPLIED WITH.

SIGNED THIS 22nd DAY OF APRIL, 1976

[Signature]
 OGDEN CITY MANAGER

OGDEN CITY PLANNING COMMISSIONS APPROVAL

The Ogden City Planning Commission has reviewed the PROPOSED PLAT AND DECISION OF OGDEN COMMERCIAL & INDUSTRIAL PARK - PLAT "A" WAS APPROVED BY SAID COMMISSION.

DATED THIS 21st DAY OF APRIL, 1976

[Signature]
 CHAIRMAN

ACCEPTANCE BY OGDEN CITY COUNCIL

We the Mayor and City Recorder of Ogden City, Utah, OGDEN COMMERCIAL & INDUSTRIAL PARK - PLAT "A" WAS DULY APPROVED AND ACCEPTED BY THE CITY COUNCIL.

ON THIS 22nd DAY OF APRIL, 1976

[Signature]
 Mayor of Ogden City

[Signature]
 Ogden City Recorder



Page 2 of 2 Pages

669921 No Fee

FILED AND RECORDED FOR
 OGDEN CITY
 976 A.L. 9 PM 2 31
 In Room 1900 Plaza Floor 7
 SOUTH LAMES OLSEN
 NORTH LAMES OLSEN
 DEPUTY CITY CLERK