

WEBER INDUSTRIAL PARK

PART OF THE NE 1/4 & NW 1/4 OF SEC. 36-T7N-R2W-SLBM

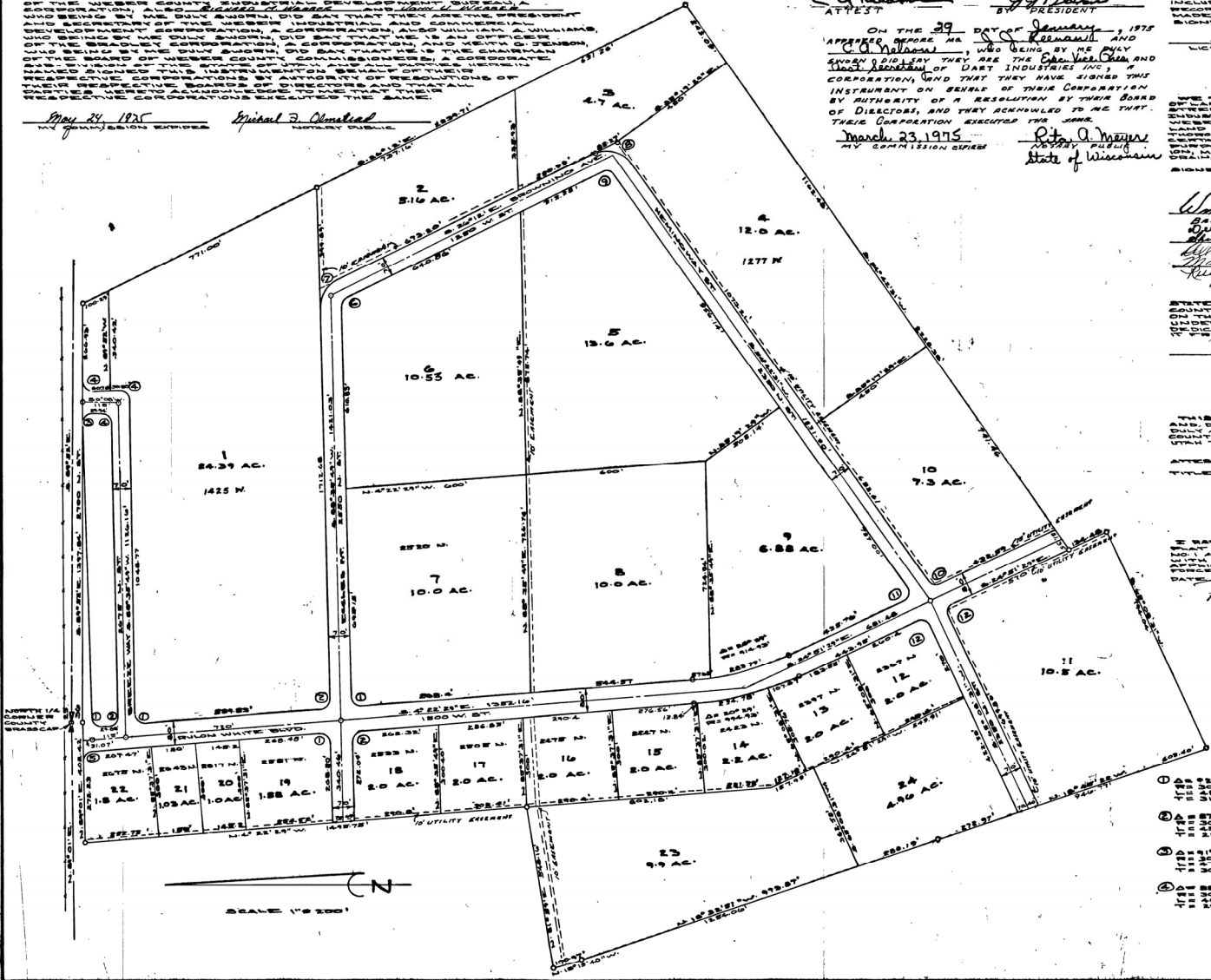
PLAT "A"

DART INDUSTRIES INC
C. A. Williams
ATTEST
J. J. Hansen
PRESIDENT

ON THE 29 DAY OF January, 1975
APPEARED BEFORE ME J. J. Hansen AND
C. A. Williams, who being by me duly
sworn did say they are the duly legal and
true Secretary of DART INDUSTRIES INC, a
CORPORATION, AND THAT THEY HAVE SIGNED THIS
INSTRUMENT ON BEHALF OF THEIR CORPORATION
BY AUTHORITY OF A RESOLUTION BY THEIR BOARD
OF DIRECTORS, AND THEY ACKNOWLEDGE TO ME THAT
THEIR CORPORATION EXECUTED THE SAME.
March 23, 1975
BY COMMISSION CLERK
P. A. Meyer
Deputy, Clerk
State of Wisconsin

WEBER COUNTY INDUSTRIAL DEVELOPMENT BUREAU
Joseph F. Brown
ATTEST
WEBER INDUSTRIAL DEVELOPMENT BUREAU
Joseph F. Brown
PRESIDENT
BY THE 29 DAY OF JUNE 1975 APPEARED BEFORE ME JESSE S. ALLEN
CLERK OF WEBER COUNTY, AND HAYWARD M. PARSONS, who being by me duly sworn,
did say they are the President and Secretary respectively,
of the WEBER INDUSTRIAL DEVELOPMENT BUREAU, a CORPORATION, AND THAT THEY
CORPORATION, AND THAT THEY HAVE SIGNED THIS INSTRUMENT ON BEHALF OF
THEIR CORPORATION BY AUTHORITY OF A RESOLUTION BY THEIR BOARD OF
DIRECTORS, AND THEY ACKNOWLEDGE TO ME THAT THEIR CORPORATION EXECUTED THE
SAME.

May 24, 1975
Special J. Olsen
County Engineer



SURVEYOR'S CERTIFICATE

I, JESSE S. ALLEN, A REGISTERED LAND SURVEYOR IN THE STATE OF UTAH DO HEREBY CERTIFY THAT THE PLAT OF WEBER INDUSTRIAL PARK PLAT "A" IN WEBER COUNTY, UTAH, HAS BEEN CORRECTLY DRAWN AND CONFORMS TO THE FOLLOWING DESCRIPTION OF LAND INCLUDED IN SAID SUBMITTAL DATA COMPARED FROM RECORDS IN THE WEBER COUNTY RECORDER'S OFFICE, AND THAT I SIGNED THIS CERTIFICATE ON MAY 24, 1975.

3726 LICENSE NO. J. J. Hansen SIGNATURE
Jesse S. Allen SIGNATURE
No. 3534 JESSE S. ALLEN STATE OF UTAH

OWNERS DEDICATION

WE, THE UNDERSIGNED OWNERS OF THE HEREIN DESCRIBED TRACT OF LAND IN WEBER COUNTY, UTAH, DO HEREBY DEDICATE AND SET ASIDE AS A PUBLIC HIGHWAY AND SERVICE LINES AND UTILITIES THE TRACT OF LAND DESCRIBED AS FOLLOWS: [Description of land to be dedicated].

Wm. A. Williams, Shirley S. Thomas, Allen E. Taylor, Harry Taylor, 25% Int. of [Name], Richard S. Papageorge, Helen K. Papageorge, Dennis H. Papageorge, Kathleen T. Papageorge, James H. Papageorge, Bernice A. Papageorge, William J. Papageorge, Kristina M. Papageorge, Kathleen T. Papageorge, Helen K. Papageorge, James H. Papageorge.
ACKNOWLEDGEMENT
March 1975
COMMISSION CLERK
P. A. Meyer

COUNTY APPROVAL

THIS IS TO CERTIFY THAT THIS PLAT HAS BEEN APPROVED AND ACCEPTED BY THE BOARD OF WEBER COUNTY PLANNING AND ZONING COMMISSION ON THE 12 DAY OF JUNE, 1975.
J. J. Hansen
Chairman
Keith L. Jones
County Attorney

WEBER COUNTY PLANNING COMMISSION

James H. Papageorge
Chairman
Bernice A. Papageorge
Vice Chairman
William J. Papageorge
Secretary

COUNTY ATTORNEY

I HAVE EXAMINED THE FOREGOING PLAT AND IN MY OPINION IT CONFORMS TO THE REQUIREMENTS OF THE UTAH PLAT ACT AND IS LEGAL AND VALID.
Robert G. Hansen
County Attorney

COUNTY ENGINEER

I HEREBY CERTIFY THAT THIS PLAT CONFORMS TO THE REQUIREMENTS OF THE UTAH PLAT ACT AND IS LEGAL AND VALID.
Fred W. Malen
County Engineer

BOUNDARY DESCRIPTION

NE 1/4 SEC. 36, T7N, R2W, S1BM, U.S. SURVEY BEGINNING AT A POINT IN THE NE 1/4 CORNER OF SEC. 36, T7N, R2W, S1BM, U.S. SURVEY... [Detailed boundary description text]

CURVE DATA		
1) 112° 22' 30" R	1) 24.29 AC	1) 112° 22' 30" R
2) 112° 22' 30" R	2) 5.16 AC	2) 112° 22' 30" R
3) 112° 22' 30" R	3) 4.7 AC	3) 112° 22' 30" R
4) 112° 22' 30" R	4) 12.0 AC	4) 112° 22' 30" R
5) 112° 22' 30" R	5) 13.6 AC	5) 112° 22' 30" R
6) 112° 22' 30" R	6) 10.55 AC	6) 112° 22' 30" R
7) 112° 22' 30" R	7) 10.0 AC	7) 112° 22' 30" R
8) 112° 22' 30" R	8) 10.0 AC	8) 112° 22' 30" R
9) 112° 22' 30" R	9) 6.88 AC	9) 112° 22' 30" R
10) 112° 22' 30" R	10) 7.3 AC	10) 112° 22' 30" R
11) 112° 22' 30" R	11) 10.5 AC	11) 112° 22' 30" R
12) 112° 22' 30" R	12) 2.0 AC	12) 112° 22' 30" R
13) 112° 22' 30" R	13) 2.0 AC	13) 112° 22' 30" R
14) 112° 22' 30" R	14) 2.2 AC	14) 112° 22' 30" R
15) 112° 22' 30" R	15) 2.0 AC	15) 112° 22' 30" R
16) 112° 22' 30" R	16) 2.0 AC	16) 112° 22' 30" R
17) 112° 22' 30" R	17) 2.0 AC	17) 112° 22' 30" R
18) 112° 22' 30" R	18) 2.0 AC	18) 112° 22' 30" R
19) 112° 22' 30" R	19) 1.88 AC	19) 112° 22' 30" R
20) 112° 22' 30" R	20) 1.88 AC	20) 112° 22' 30" R
21) 112° 22' 30" R	21) 1.88 AC	21) 112° 22' 30" R
22) 112° 22' 30" R	22) 1.88 AC	22) 112° 22' 30" R
23) 112° 22' 30" R	23) 9.9 AC	23) 112° 22' 30" R
24) 112° 22' 30" R	24) 4.9 AC	24) 112° 22' 30" R

661691 No Fee
FILED AND RECORDED FOR
WEBER COUNTY
1976 APR 2 PM 2:47
IN Book 19 of PLATS, Page 44
RUTH EAMES OLSEN
WEBER COUNTY RECORDER
DEPUTY *Ruth Eames Olsen*