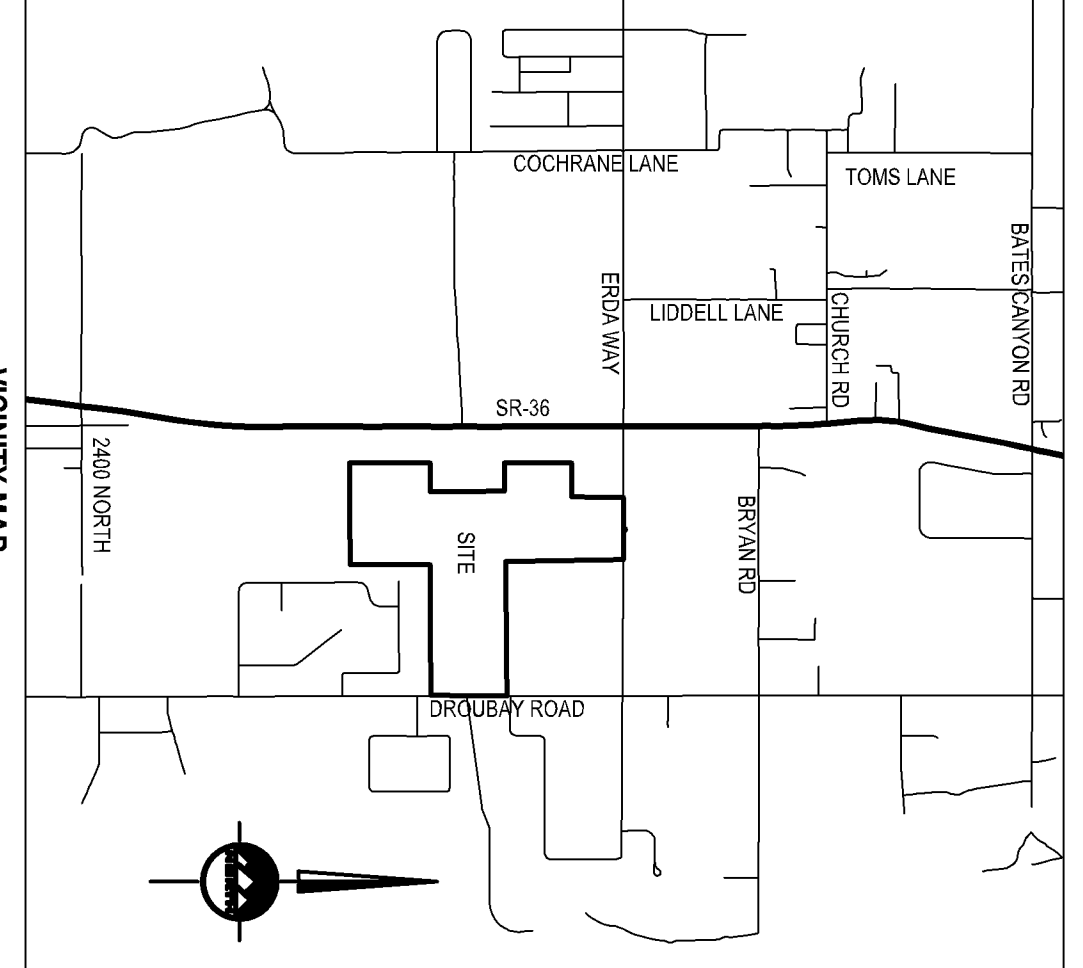
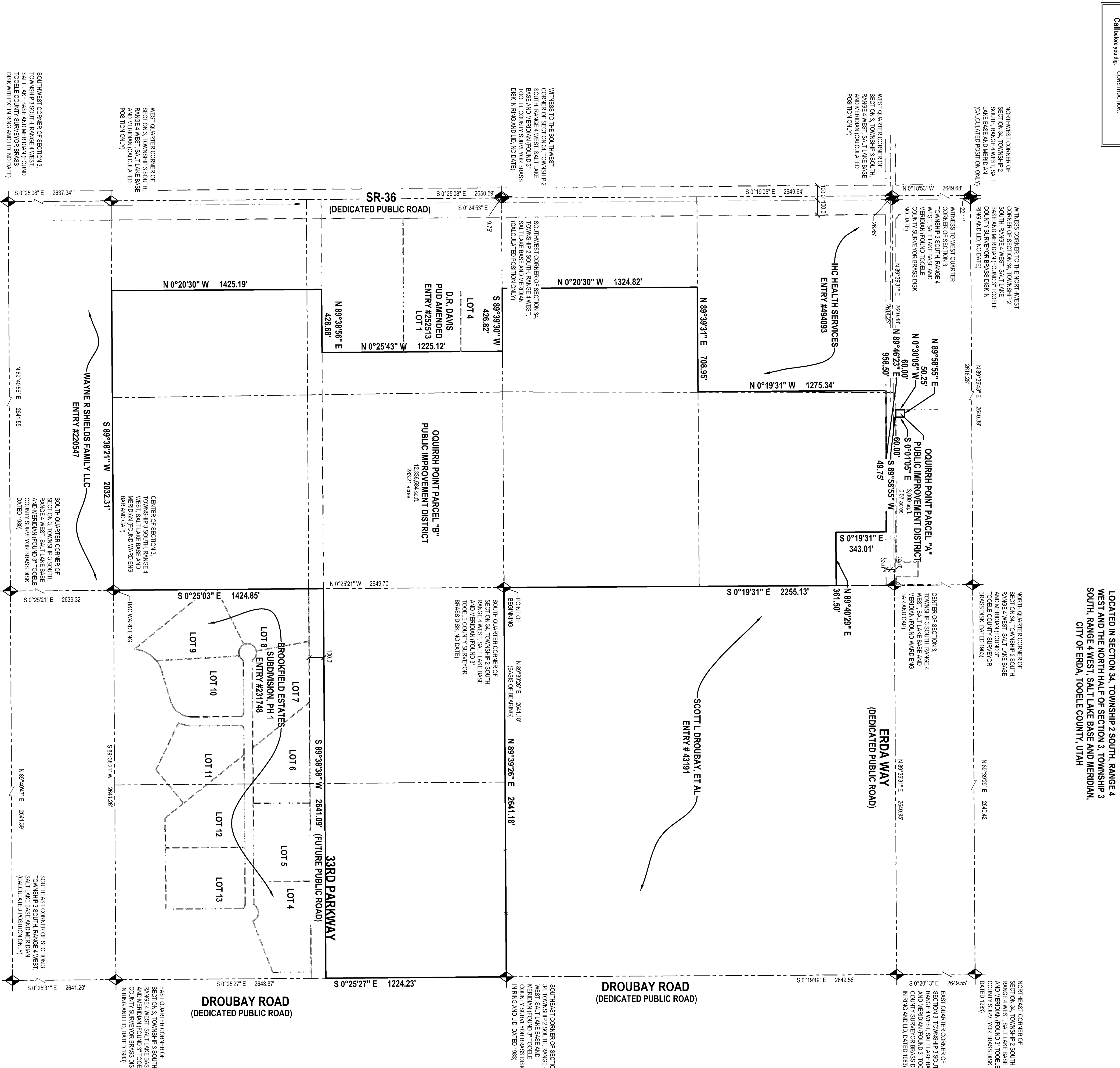


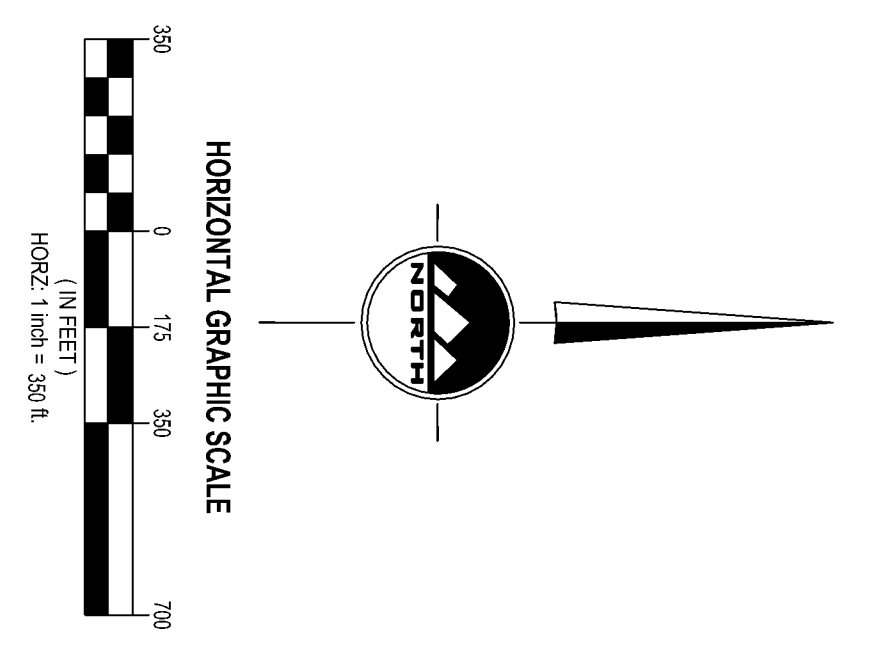
**FINAL LOCAL ENTITY PLAT**  
**OQUIRRH POINT PUBLIC INFRASTRUCTURE DISTRICT #1 - ANNEXATION #1**  
**(EXPANDING AND ANNEXING OQUIRRH POINT INFRASTRUCTURE DISTRICT #1)**  
LOCATED IN SECTION 34, TOWNSHIP 2 SOUTH, RANGE 4 WEST AND THE NORTH HALF OF SECTION 3, TOWNSHIP 3 SOUTH, RANGE 4 WEST, SALT LAKE BASE AND MERIDIAN, CITY OF ERDA, TOOELE COUNTY, UTAH

CALL BLUEPRINTS @ 911 AT LEAST 48 HOURS PRIOR TO THE COMMENCEMENT OF ANY CONSTRUCTION.  
Know what to do. Call before you dig.



**LEGEND**

- PUBLIC INFRASTRUCTURE
- DESIGNATED BOUNDARY LINE
- PROPERTY LINE
- SECTION LINE
- ADJACENT RIGHT-OF-WAY LINE
- SECTION CORNER



**BOUNDARY DESCRIPTION**  
Parcel 1C

1. Parcel 1C (Lot 13) within the Northern Quarter of Section 34, Township 2 South, Range 4 West, Salt Lake Base and Meridian, said parcel also known as E 2nd, Tooele County, Utah, (see parcel's plat recorded as to Tooele County, Utah).

Beginning at the Southeast Corner of Section 34, Township 2 South, Range 4 West, Salt Lake Base and Meridian; and running thence North 89°39'31\"

**ACCEPTANCE BY APPROVING AUTHORITY**

THIS IS TO CERTIFY THAT PURSUANT TO UTAH CODE SECTION 17B-1-212 ERDA CITY HAS ADOPTED A RESOLUTION DECLINING TO PROVIDE THE SERVICES REQUESTED BY THE PETITIONERS WITHIN THE BOUNDARIES DERIVED ON THIS PLAT, AND THAT ERDA CITY PARTNER CERTIFIES THAT A PETITION SIGNED BY THE OWNERS OF 100% OF THE PRIVATE PROPERTY WITHIN THE BOUNDARIES DERIVED ON THIS PLAT, SEEKING THE CREATION OF THE OQUIRRH POINT PUBLIC INFRASTRUCTURE DISTRICT #1, WAS FILED WITH THE CITY ENGINEER'S OFFICE, TOOELE COUNTY, UTAH, AND THAT THE PETITIONERS RESPECTS COMPLIANT WITH UTAH CODE SECTION 17B-1-203, 17B-1-205, AND 17B-1-206.

SIGNED: OQUIRRH POINT PUBLIC INFRASTRUCTURE DISTRICT #1 CHAIR  
DATE: THIS 9 DAY OF Oct 2024  
ATTEST: OQUIRRH POINT PUBLIC INFRASTRUCTURE DISTRICT #1 CLERK

**COUNTY SURVEYOR APPROVAL**

APPROVED THIS 9th DAY OF October, 20 24, BY THE TOOELE COUNTY SURVEYOR.

TOOELE COUNTY SURVEYOR

**FINAL LOCAL ENTITY PLAT**  
**OQUIRRH POINT PUBLIC INFRASTRUCTURE DISTRICT #1 - ANNEXATION #1**  
**(EXPANDING AND ANNEXING OQUIRRH POINT INFRASTRUCTURE DISTRICT #1)**  
LOCATED IN SECTION 34, TOWNSHIP 2 SOUTH, RANGE 4 WEST AND THE NORTH HALF OF SECTION 3, TOWNSHIP 3 SOUTH, RANGE 4 WEST, SALT LAKE BASE AND MERIDIAN, CITY OF ERDA, TOOELE COUNTY, UTAH

TOOELE COUNTY RECORDER

**TOOELE COUNTY SURVEYOR**  
169 North Main Street, Unit 1  
Tooele, UT 84399  
Phone: 435-843-3590  
Fax: 435-879-0188  
WWW.TOOLECOUNTY.UTAH.GOV

**EN SIGN**

**MAAT LAKE CITY**  
1928 West Main Street, Unit 1  
Tooele, UT 84399  
Phone: 435-843-3590  
Fax: 435-879-0188  
WWW.ENSIGN.CITY.UTAH.GOV

**LAATON**  
1928 West Main Street, Unit 1  
Tooele, UT 84399  
Phone: 435-843-3590  
Fax: 435-879-0188  
WWW.LATON.CITY.UTAH.GOV

**MCNEIL**  
1928 West Main Street, Unit 1  
Tooele, UT 84399  
Phone: 435-843-3590  
Fax: 435-879-0188  
WWW.MCNEIL.CITY.UTAH.GOV

**SHEET 1 OF 1**

PROJECT NUMBER: 1131F  
MANAGER: D. KRISMAN  
DRAWN BY: T. HUSSEY  
CHECKED BY: D. KRISMAN  
DATE: 10/9/24

RECORDED # 6111004 DATE: 11/14/24 TIME: 3:50  
STATE OF UTAH, COUNTY OF TOOELE, RECORDED AND FILED AT THE  
REQUEST OF: Snow Jensen & Reece  
FEE: \$62.00

TOOELE COUNTY RECORDER  
Kathleen Clark