

SURVEYOR'S CERTIFICATE
 I, Evan J. Wood, do hereby certify that I am a Professional Land Surveyor, License No. 18395 in accordance with Title 38, Chapter 22 of the Utah State Code. I further certify by authority of said Code, that I have completed a Survey of the property described on this Plat in accordance with Section 17-2-1 of said Code, and have used the best and truest method of surveying, and that the bearings and distances are true and correct, and that the area and contents, to be hereafter known as WELLS CROSSING SUBDIVISION, PHASE 5, are true and correct, and that the area and contents, to be hereafter known as WELLS CROSSING SUBDIVISION, PHASE 5, are true and correct.

BOUNDARY DESCRIPTION
 A PART OF THE SE1/4 & SW1/4 OF SECTION 1, TOWNSHIP 3 SOUTH, RANGE 6 WEST, SALT LAKE BASE & MERIDIAN, MORE PARTICULARLY DESCRIBED AS FOLLOWS:
 BEGINNING AT THE SOUTHWEST CORNER OF LOT 322, WELLS CROSSING SUBDIVISION PHASE 3, AS RECORDED AT ENTRY NO. 117292 IN THE TOOELE COUNTY RECORDS OFFICE, SAID POINT BEING 889'52'18"W 18'53'4" N ALONG THE SECTION LINE AND 800'04'20"W 4'62'2" N FROM THE SOUTHWEST CORNER OF SECTION 1, TOWNSHIP 3 SOUTH, RANGE 6 WEST, SALT LAKE BASE, AND MERIDIAN, AND RUNNING THENCE 889'53'51"W 19'55'5" N; THENCE 800'04'56"E 4'04'4" N; THENCE 889'53'51"W 48'8'0" N; THENCE 800'04'97"E 2'25'5" N; THENCE 800'04'56"E 4'04'4" N; THENCE 889'53'51"W 2'33'7" N; THENCE 800'04'97"E 4'65'4" N; THENCE 800'20'00"W 1'70'42" N TO A SOUTHERLY BOUNDARY OF WELLS CROSSING PHASE 4, AS RECORDED AT ENTRY NO. 540511 IN THE TOOELE COUNTY RECORDS OFFICE; THENCE ALONG THE BOUNDARY OF SAID WELLS CROSSING PHASE 4 THE FOLLOWING FOUR (4) COURSES: (1) 889'40'00"E 70'11'4" N; THENCE (2) 889'53'51"E 66'00" N; THENCE (3) 800'04'09"W 6'23'0" N; THENCE (4) 889'53'51"E 92'02" N TO AND ALONG WELLS CROSSING SUBDIVISION PHASE 1, AS RECORDED AT ENTRY NO. 484858 IN THE TOOELE COUNTY RECORDS OFFICE; THENCE ALONG SAID WELLS CROSSING PHASE 1 THE FOLLOWING THREE (3) COURSES: THENCE (1) 889'53'51"E 66'00" N; THENCE (2) 800'04'56"W 4'30'0" N; THENCE (3) 889'53'51"E 19'58'9" N TO THE NORTHWEST CORNER OF WELLS CROSSING SUBDIVISION PHASE 3, AS RECORDED AT ENTRY NO. 517292 IN THE TOOELE COUNTY RECORDS OFFICE; THENCE ALONG THE WESTERLY LINE OF SAID WELLS CROSSING SUBDIVISION PHASE 3 800'04'20"E 4'44'75" N TO THE POINT OF BEGINNING.

OWNERS DEDICATION
 KNOW ALL MEN BY THESE PRESENTS THAT THE UNDERSIGNED ARE THE OWNERS OF THE HERON DESCRIBED TRACT OF LAND AND HEREBY CAUSE THE SAME TO BE DIVIDED INTO LOTS AND STREETS TOGETHER WITH EASEMENTS AS SET FORTH HEREINAFTER TO BE KNOWN AS
WELLS CROSSING SUBDIVISION PHASE 5
 THE UNDERSIGNED OWNERS HEREBY DEDICATE TO GRANITSVILLE CITY ALL THOSE TRACTS OF LAND DESIGNATED ON THIS PLAT AS STREETS. THE SAME TO BE USED AS PUBLIC THOROUGHFARES FOREVER. THE UNDERSIGNED OWNERS ALSO HEREBY CONVEY TO GRANITSVILLE CITY AND TO ANY AND ALL PUBLIC UTILITY COMPANIES A PERPETUAL, NON-EXCLUSIVE EASEMENT OVER THE PUBLIC UTILITY AND DRAINAGE EASEMENTS SHOWN ON THIS PLAT. THE SAME TO BE USED FOR DRAINAGE AND THE INSTALLATION, MAINTENANCE AND OPERATION OF UTILITY SERVICE LINES AND FACILITIES. THE UNDERSIGNED OWNERS ALSO HEREBY CONVEY ANY OTHER EASEMENTS AS SHOWN AND NOTED ON THIS PLAT TO THE PARTIES INDICATED AND FOR THE PURPOSES SHOWN HERON.

LIMITED LIABILITY ACKNOWLEDGEMENT
 IN WITNESS WHEREOF I HAVE HERETO SIGNED AND SEALED THESE PRESENTS AT GRANITSVILLE, UTAH THIS 17th DAY OF MAY, A.D. 2022.
 CW LAND CO. LLC
 CO-OWNER
 CO-MANAGER

WELLS CROSSING SUBDIVISION PHASE 5
 A NOTARY PUBLIC COMMISSIONED IN UTAH RESIDING IN Deurs COUNTY MY COMMISSION EXPIRES: 02/11/2023
 I, Stephanie Heiner PRINTED NAME OF NOTARY

TOOELE COUNTY RECORDER
 NO. 574220
 STATE OF UTAH, COUNTY OF TOOELE, RECORDED & FILED AT THE REQUEST OF Greg Day
 DATE 05/19/2022 TIME 3:03pm BOOK 22 PAGE 27
 108.00
 Fee \$
Rajisha Ulin Deputy
 TOOELE COUNTY RECORDER

RECORD OF SURVEY
 PER STATE STATUTE 17-2-17, A SURVEY THAT INCLUDES THE LANDS SHOWN HERON HAS BEEN COMPLETED AND FILED IN THE OFFICE OF THE TOOELE COUNTY SURVEYOR AND ASSIGNED FILE NO. 2018-0082.
 APPROVED THIS 2 DAY OF May A.D. 2022
John Deisen
 TOOELE COUNTY SURVEY DIRECTOR

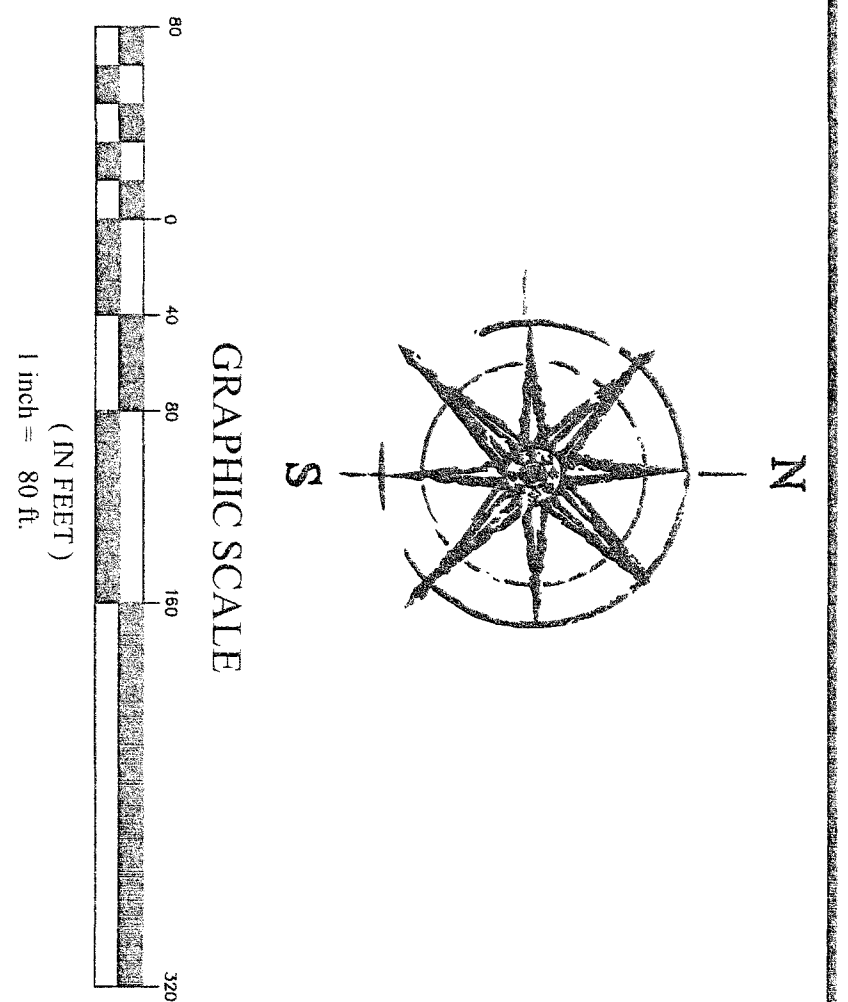
GRANITSVILLE CITY MAYOR
 APPROVED THIS 5 DAY OF June A.D. 2022
Shirley Keagle
 ATTORNEY CITY RECORDER

TOOELE COUNTY TREASURER
 APPROVED THIS 8th DAY OF June A.D. 2022
David Swartz
 CHAIRMAN, GRANITSVILLE CITY PLANNING COMMISSION

GRANITSVILLE CITY DEPARTMENT
 APPROVED THIS 14th DAY OF May A.D. 2022
Greg Day
 GRANITSVILLE CITY FIRE DEPARTMENT

GRANITSVILLE CITY ATTORNEY
 APPROVED THIS 14th DAY OF May A.D. 2022
Greg Day
 GRANITSVILLE CITY FIRE DEPARTMENT

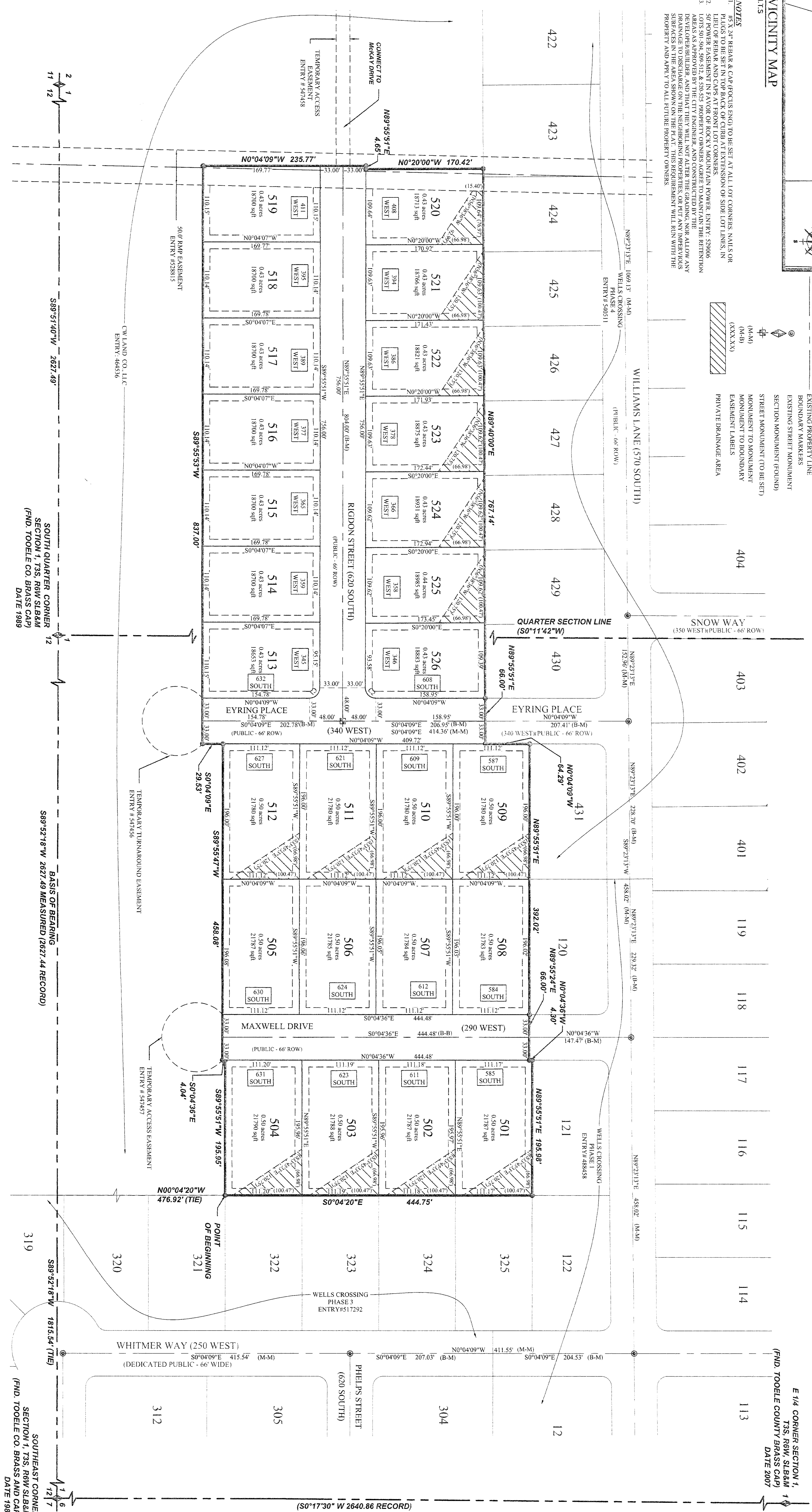
GRANITSVILLE CITY PUBLIC WORKS
 APPROVED THIS 23rd DAY OF May A.D. 2022
Greg Day
 GRANITSVILLE CITY



Curve Table

CURVE	RADIUS	DELTA	LENGTH	CHORD DIRECTION	CHORD LENGTH
C1	15.00	90°00'00"	23.56	N89°40'09"W	21.21
C2	15.00	90°00'00"	23.56	N44°55'51"E	21.21

WELLS CROSSING SUBDIVISION PHASE 5 FINAL PLAT
 LOCATED IN THE SE1/4 & SW1/4 OF SECTION 1, TOWNSHIP 3 SOUTH, RANGE 6 WEST, GRANITSVILLE CITY, TOOELE COUNTY, UTAH



PREPARED FOR
 OWNER/DEVELOPER
 CW LAND COMPANY
 1222 WEST LEGACY CROSSING BLVD, SUITE 6
 CENTERTVILLE, UTAH 84104
 (801) 677-3810
 CONTACT: GREG DAY

PREPARED BY
FOCUS
 ENGINEERING AND SURVEYING, LLC
 1000 WEST 1000 SOUTH, SUITE 100
 MIDWALD, UTAH 84044
 (801) 221-0073

GRANITSVILLE CITY PUBLIC WORKS
 APPROVED THIS 23rd DAY OF May A.D. 2022
 BY THE DIRECTOR OF PUBLIC WORKS FOR GRANITSVILLE CITY
Greg Day
 DIRECTOR, GRANITSVILLE CITY PUBLIC WORKS

GRANITSVILLE CITY DEPARTMENT
 APPROVED THIS 14th DAY OF May A.D. 2022
 BY THE GRANITSVILLE CITY FIRE DEPARTMENT
Greg Day
 GRANITSVILLE CITY FIRE DEPARTMENT

TOOELE COUNTY TREASURER
 APPROVED THIS 8th DAY OF June A.D. 2022
 BY THE TOOELE COUNTY TREASURER. PROPERTY TAXES DUE AND OWING HAVE BEEN PAID IN FULL.
David Swartz
 TOOELE COUNTY TREASURER

GRANITSVILLE CITY MAYOR
 APPROVED THIS 5 DAY OF June A.D. 2022
 BY THE GRANITSVILLE CITY MAYOR.
Shirley Keagle
 ATTORNEY CITY RECORDER

TOOELE COUNTY SURVEY DIRECTOR
 APPROVED THIS 2 DAY OF May A.D. 2022
John Deisen
 GRANITSVILLE CITY ENGINEER

GRANITSVILLE CITY ATTORNEY
 APPROVED THIS 14th DAY OF May A.D. 2022
 BY THE GRANITSVILLE CITY ATTORNEY
Greg Day
 GRANITSVILLE CITY ATTORNEY

GRANITSVILLE CITY DEPARTMENT
 APPROVED THIS 14th DAY OF May A.D. 2022
 BY THE GRANITSVILLE CITY DEPARTMENT
Greg Day
 GRANITSVILLE CITY FIRE DEPARTMENT

GRANITSVILLE CITY PUBLIC WORKS
 APPROVED THIS 23rd DAY OF May A.D. 2022
 BY THE DIRECTOR OF PUBLIC WORKS FOR GRANITSVILLE CITY
Greg Day
 GRANITSVILLE CITY

GRANITSVILLE CITY DEPARTMENT
 APPROVED THIS 14th DAY OF May A.D. 2022
 BY THE GRANITSVILLE CITY DEPARTMENT
Greg Day
 GRANITSVILLE CITY FIRE DEPARTMENT

TOOELE COUNTY TREASURER
 APPROVED THIS 8th DAY OF June A.D. 2022
 BY THE TOOELE COUNTY TREASURER. PROPERTY TAXES DUE AND OWING HAVE BEEN PAID IN FULL.
David Swartz
 TOOELE COUNTY TREASURER

GRANITSVILLE CITY MAYOR
 APPROVED THIS 5 DAY OF June A.D. 2022
 BY THE GRANITSVILLE CITY MAYOR.
Shirley Keagle
 ATTORNEY CITY RECORDER

TOOELE COUNTY SURVEY DIRECTOR
 APPROVED THIS 2 DAY OF May A.D. 2022
John Deisen
 GRANITSVILLE CITY ENGINEER

GRANITSVILLE CITY ATTORNEY
 APPROVED THIS 14th DAY OF May A.D. 2022
 BY THE GRANITSVILLE CITY ATTORNEY
Greg Day
 GRANITSVILLE CITY ATTORNEY

GRANITSVILLE CITY DEPARTMENT
 APPROVED THIS 14th DAY OF May A.D. 2022
 BY THE GRANITSVILLE CITY DEPARTMENT
Greg Day
 GRANITSVILLE CITY FIRE DEPARTMENT

GRANITSVILLE CITY PUBLIC WORKS
 APPROVED THIS 23rd DAY OF May A.D. 2022
 BY THE DIRECTOR OF PUBLIC WORKS FOR GRANITSVILLE CITY
Greg Day
 GRANITSVILLE CITY