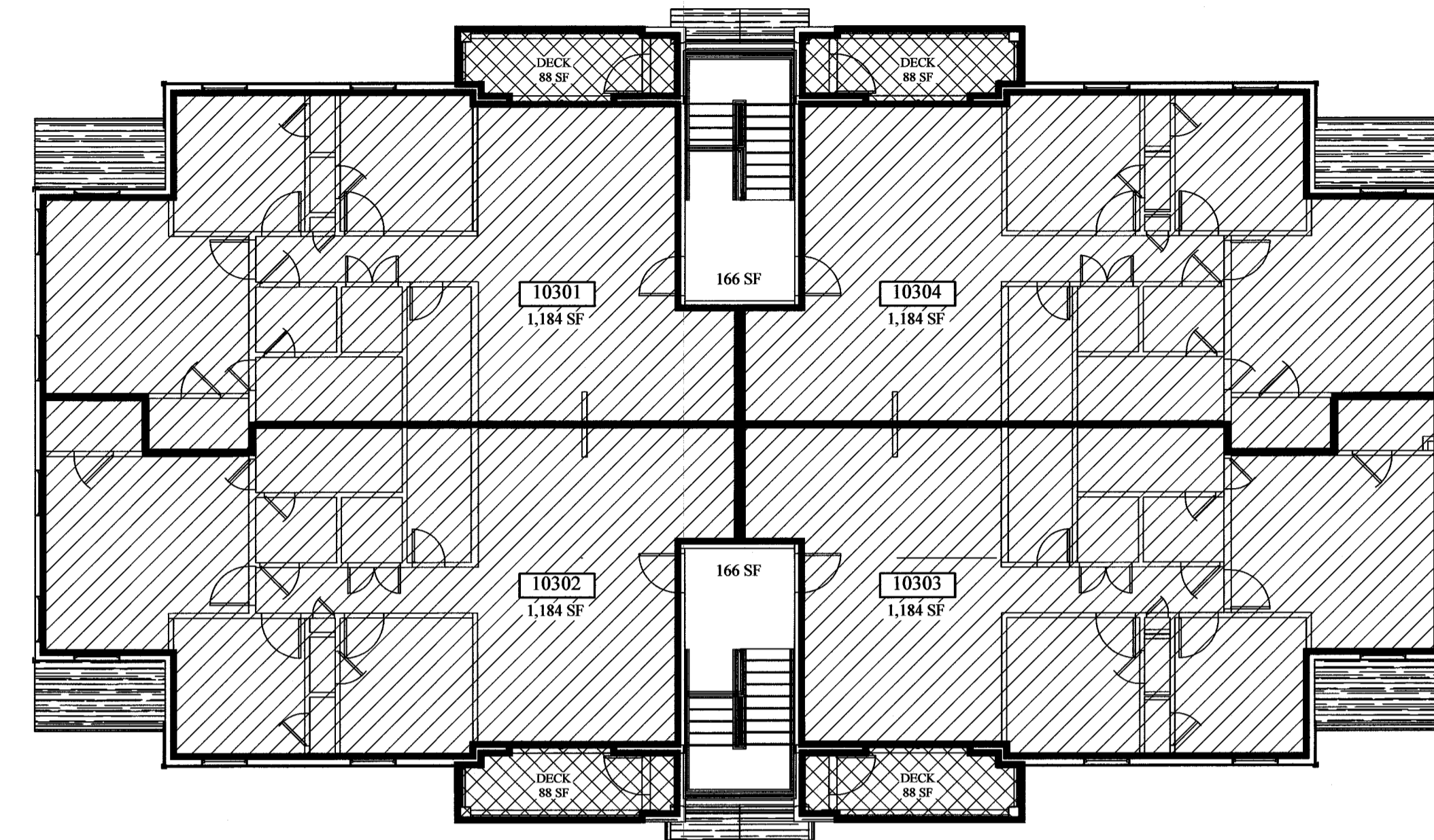


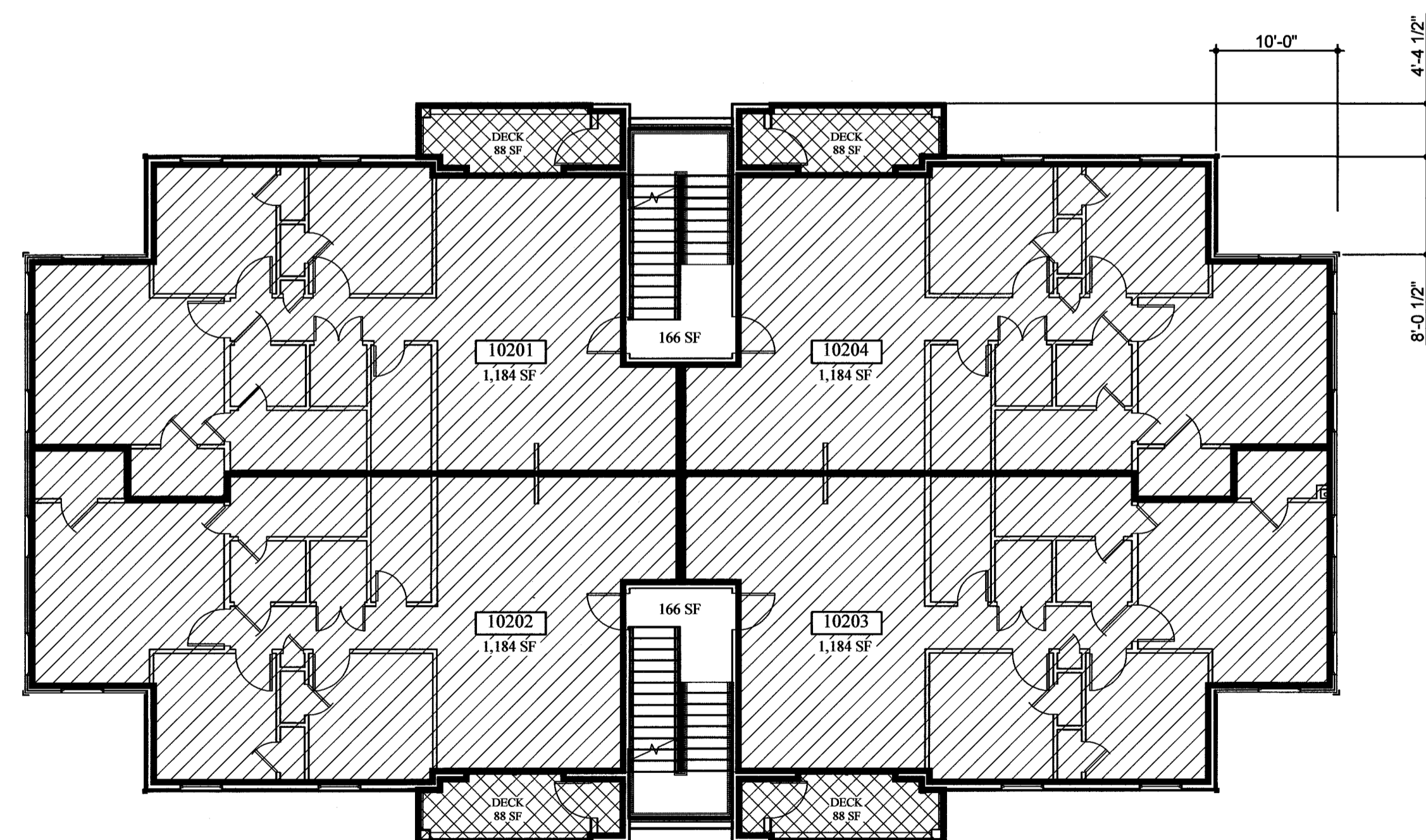
FIRST FLOOR PLAN

DIMENSIONS SHOWN ARE TYPICAL FOR ALL FIRST FLOOR UNITS



THIRD FLOOR PLAN

DIMENSIONS FOR THIRD FLOOR MATCHES SECOND FLOOR



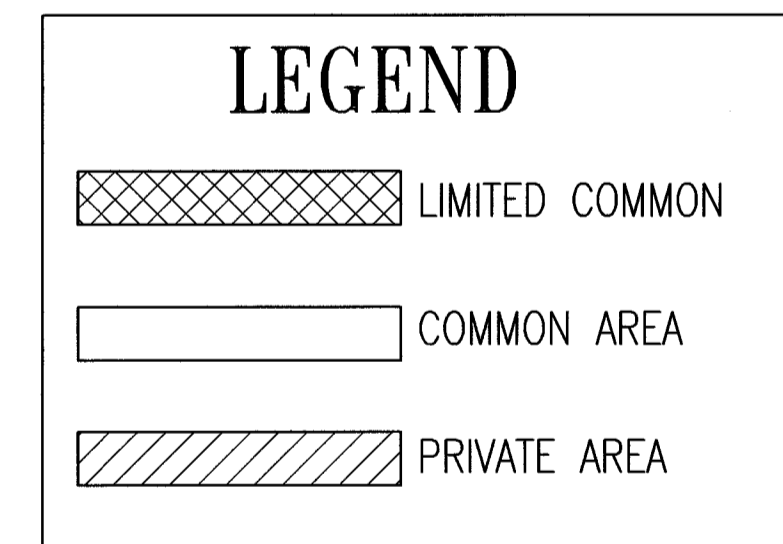
SECOND FLOOR PLAN

DIMENSIONS SHOWN SHOW CHANGES FROM FIRST TO SECOND FLOOR

1ST FLOOR  
 LIMITED COMMON 352 SF  
 COMMON AREA 426 SF  
 PRIVATE AREA 4,758 SF

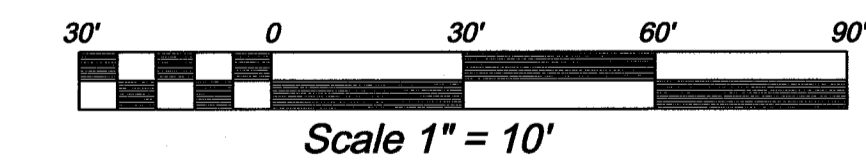
2ND FLOOR  
 LIMITED COMMON 352 SF  
 COMMON AREA 332 SF  
 PRIVATE AREA 4,736 SF

3RD FLOOR  
 LIMITED COMMON 352 SF  
 COMMON AREA 332 SF  
 PRIVATE AREA 4,736 SF



NOTES:

1. PLANS AND DIMENSIONS SHOWN ON THIS PLAT WERE COMPILED FROM ARCHITECTURAL DRAWINGS PREPARED BY ARCHITECTURAL COALITION, 1991 SOUTH STATE ROAD, SPRINGVILLE UTAH, 84663 (801) 491-0275
2. ALL UNIT EXTERIOR DIMENSIONS ARE TO THE OUTSIDE WALL.
3. ALL UNIT INTERIOR DIMENSIONS ARE TO THE MIDDLE OF WALL.
4. FOR COMPLETE DESCRIPTION OF OWNERSHIP COVENANTS, RESTRICTIONS AND CONDITIONS REFER TO THE VILLAGE ON 12TH RECIPROCAL EASEMENT AGREEMENT BOOK \_\_\_\_\_ PAGES \_\_\_\_\_.
5. ALL PRIVATE, COMMON AND LIMITED COMMON AREAS EXTEND TO THE CENTER OF THE WALL.
6. ALL UNITS HAVE THE SAME INTERIOR DIMENSIONS.



ADDRESS BLOCK

UNIT	ADDRESS
FIRST FLOOR	
10101	1128 SOUTH 820 EAST UNIT 10101
10102	1128 SOUTH 820 EAST UNIT 10102
10103	1128 SOUTH 820 EAST UNIT 10103
10104	1128 SOUTH 820 EAST UNIT 10104
SECOND FLOOR	
10201	1128 SOUTH 820 EAST UNIT 10201
10202	1128 SOUTH 820 EAST UNIT 10202
10203	1128 SOUTH 820 EAST UNIT 10203
10204	1128 SOUTH 820 EAST UNIT 10204
THIRD FLOOR	
10301	1128 SOUTH 820 EAST UNIT 10301
10302	1128 SOUTH 820 EAST UNIT 10302
10303	1128 SOUTH 820 EAST UNIT 10303
10304	1128 SOUTH 820 EAST UNIT 10304

THE VILLAGE ON 12TH CONDO BUILDING 10

LOCATED IN THE SOUTHEAST QUARTER OF SECTION 5, T4S, R5E, SLB&M

A UTAH CONDOMINIUM PROJECT, \_\_\_\_\_ HEBER \_\_\_\_\_ CITY, WASATCH COUNTY, STATE OF UTAH

SCALE: 1" = 10 FEET SHEET 2 of 5

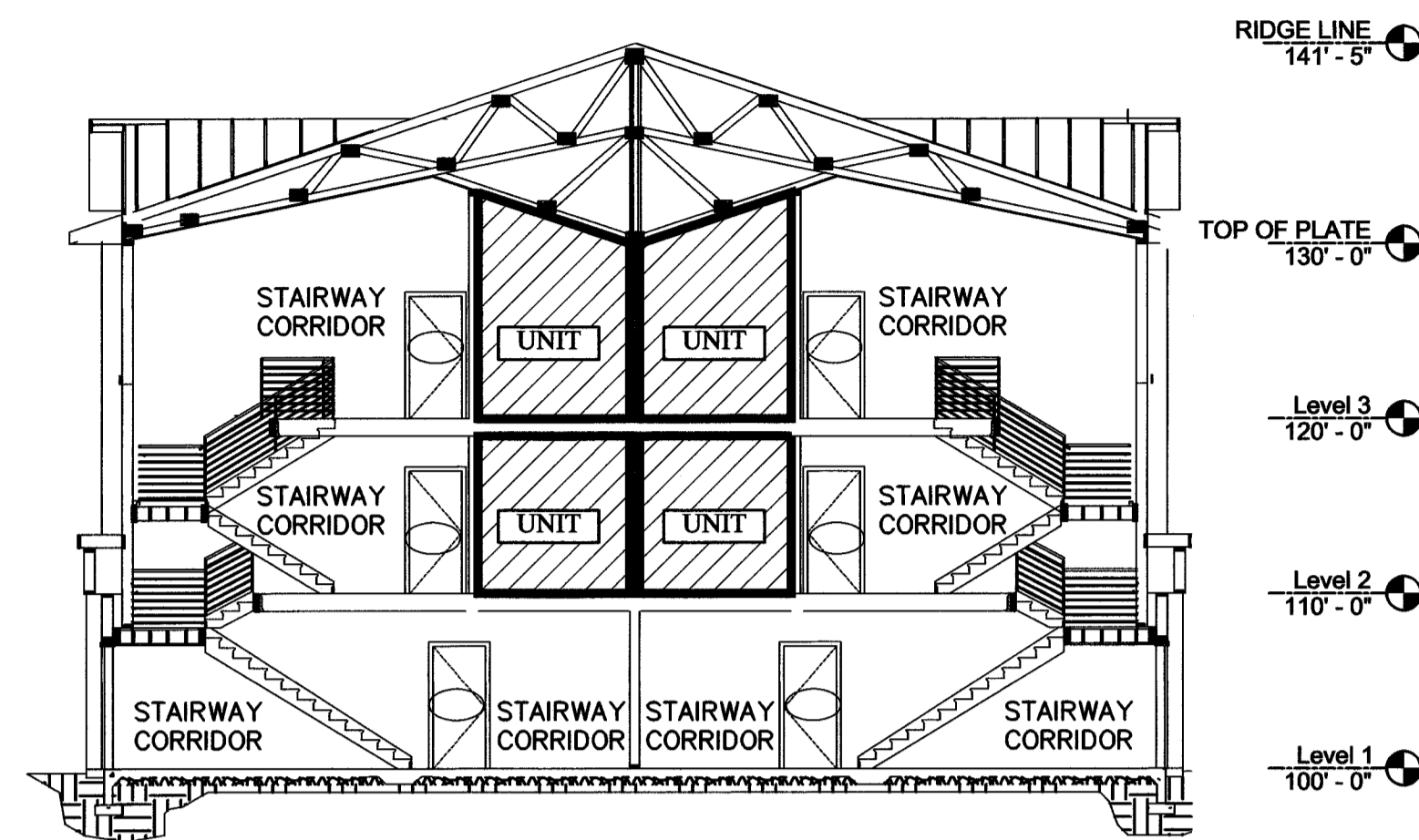
SURVEYOR'S SEAL NOTARY PUBLIC SEAL CITY ENGINEER SEAL CLERK-RECORDER SEAL

PROFESSIONAL LAND SURVEYOR  
 Taylor  
 #885-112  
 STATE OF UTAH

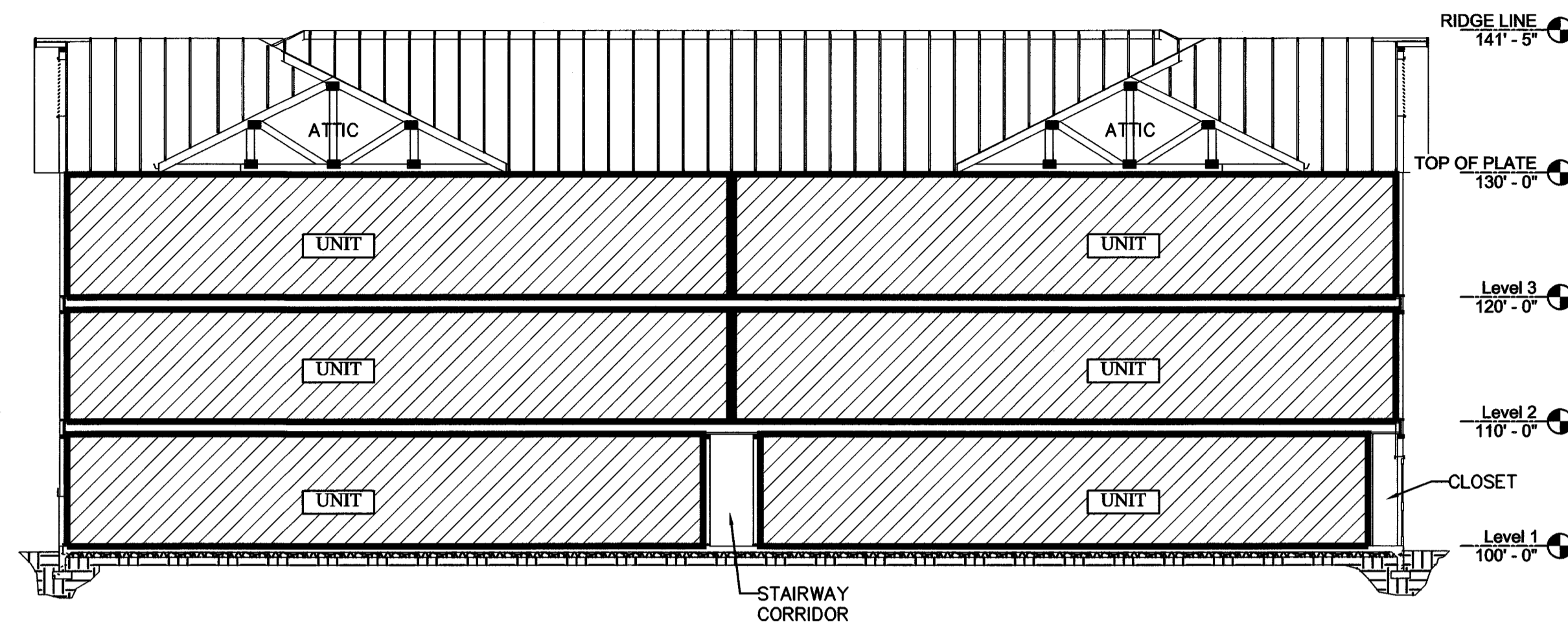
REGISTERED PROFESSIONAL ENGINEER  
 No. 169268  
 Bart L. Mumford  
 STATE OF UTAH

ENTRY # 445330 BOOK 1207 PAGE 1466-1515  
 DATE 11-17-2017 TIME 8:55 AM FEE 174.00  
 FOR ART CITY INVESTMENTS, LLC  
 BY LA WASATCH COUNTY RECORDER PEGGY FOY SULSER

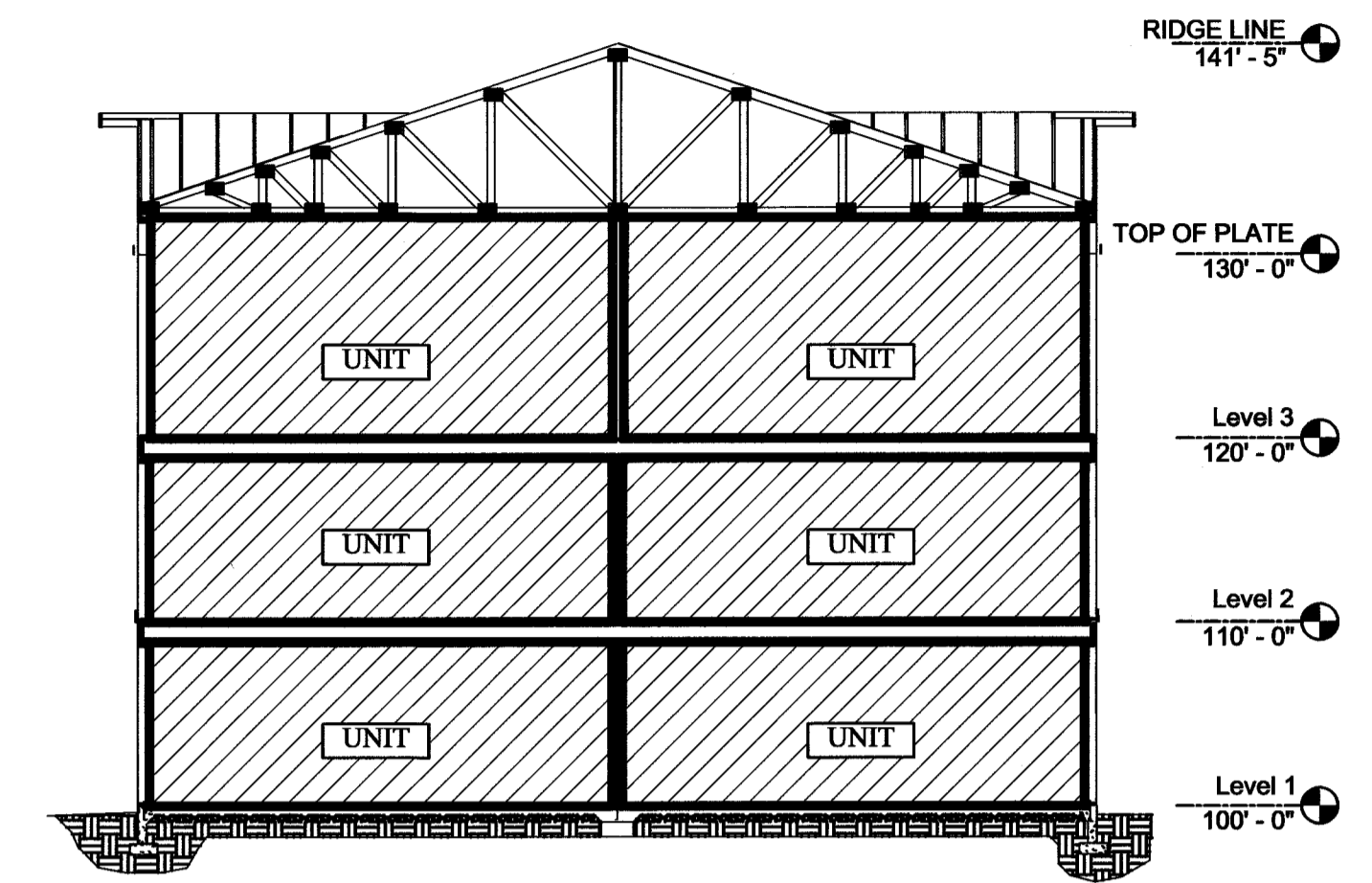
THE VILLAGE ON 12TH BUILDING 10 - 11 OCT 2017



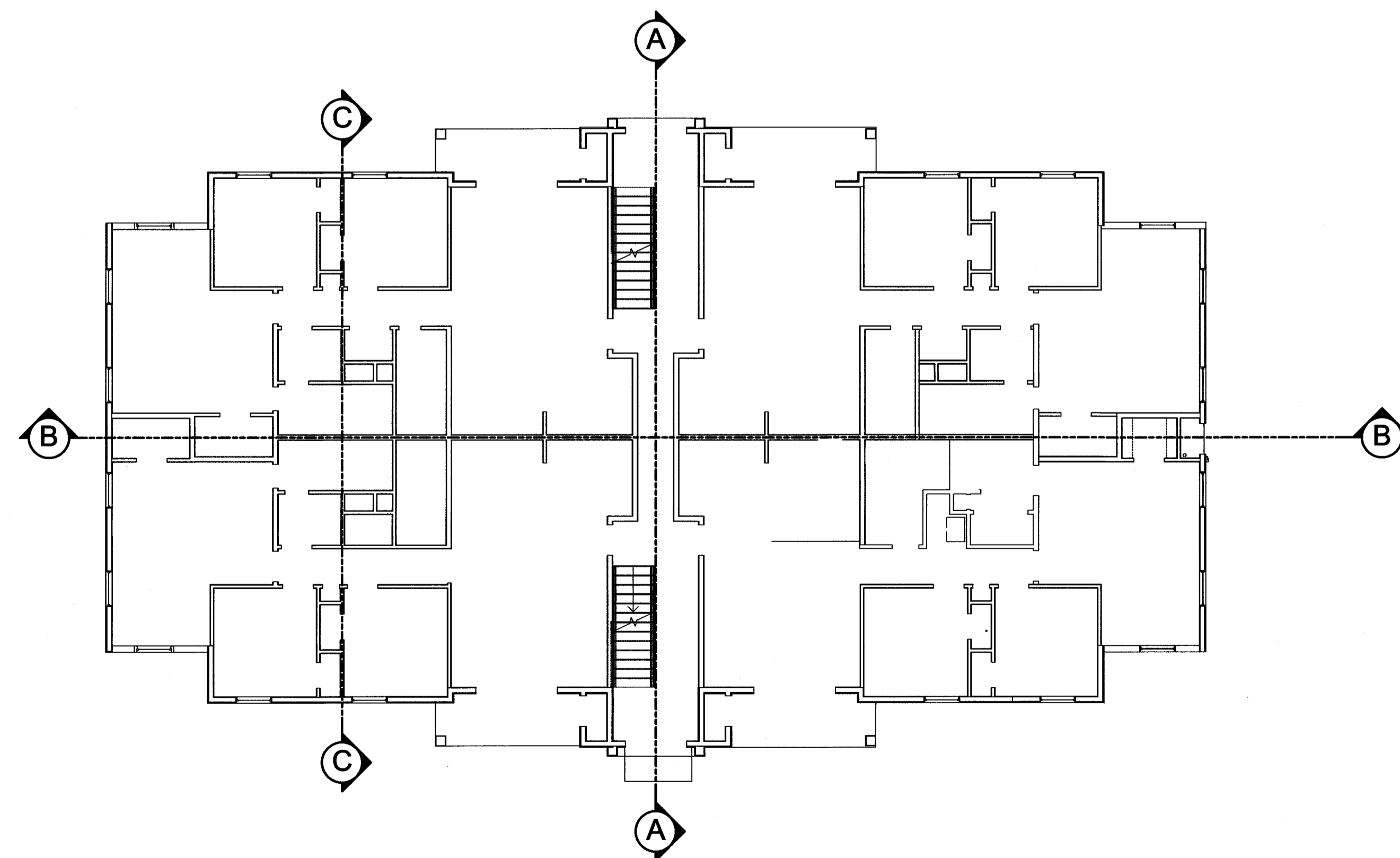
TYPICAL SECTION A-A



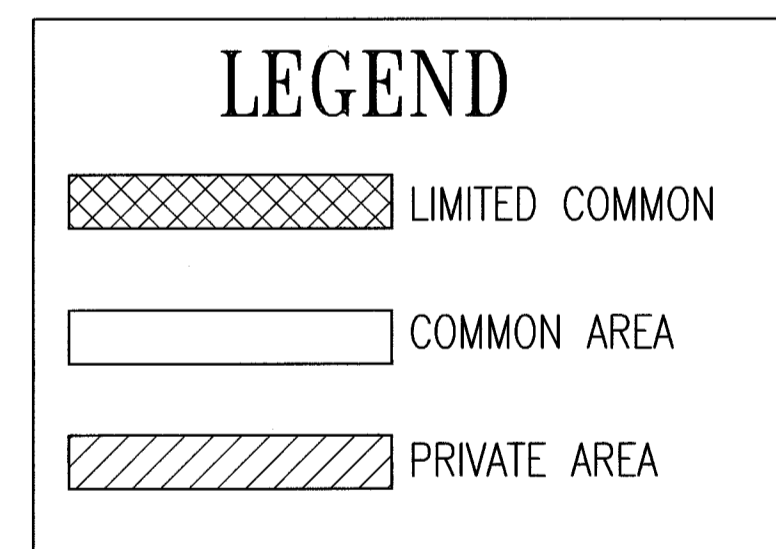
TYPICAL SECTION B-B



TYPICAL SECTION C-C

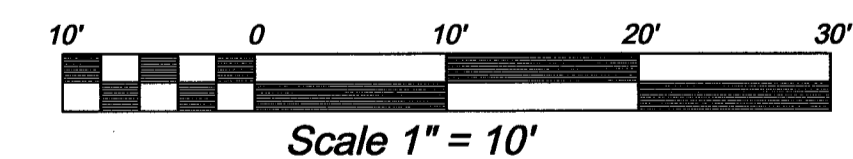


SECTION KEY



NOTES:

1. PLANS AND DIMENSIONS SHOWN ON THIS PLAT WERE COMPILED FROM ARCHITECTURAL DRAWINGS PREPARED BY ARCHITECTURAL COALITION, 1991 SOUTH STATE ROAD, SPRINGVILLE UTAH, 84663 (801) 491-0275
2. ALL UNIT EXTERIOR DIMENSIONS ARE TO THE OUTSIDE WALL.
3. ALL UNIT INTERIOR DIMENSIONS ARE TO THE MIDDLE OF WALL.
4. FOR COMPLETE DESCRIPTION OF OWNERSHIP COVENANTS, RESTRICTIONS AND CONDITIONS REFER TO THE VILLAGE ON 12TH RECIPROCAL EASEMENT AGREEMENT BOOK \_\_\_\_\_ PAGES \_\_\_\_\_.
5. ALL PRIVATE, COMMON AND LIMITED COMMON AREAS EXTEND TO THE CENTER OF THE WALL.
6. ALL UNITS HAVE THE SAME INTERIOR DIMENSIONS.



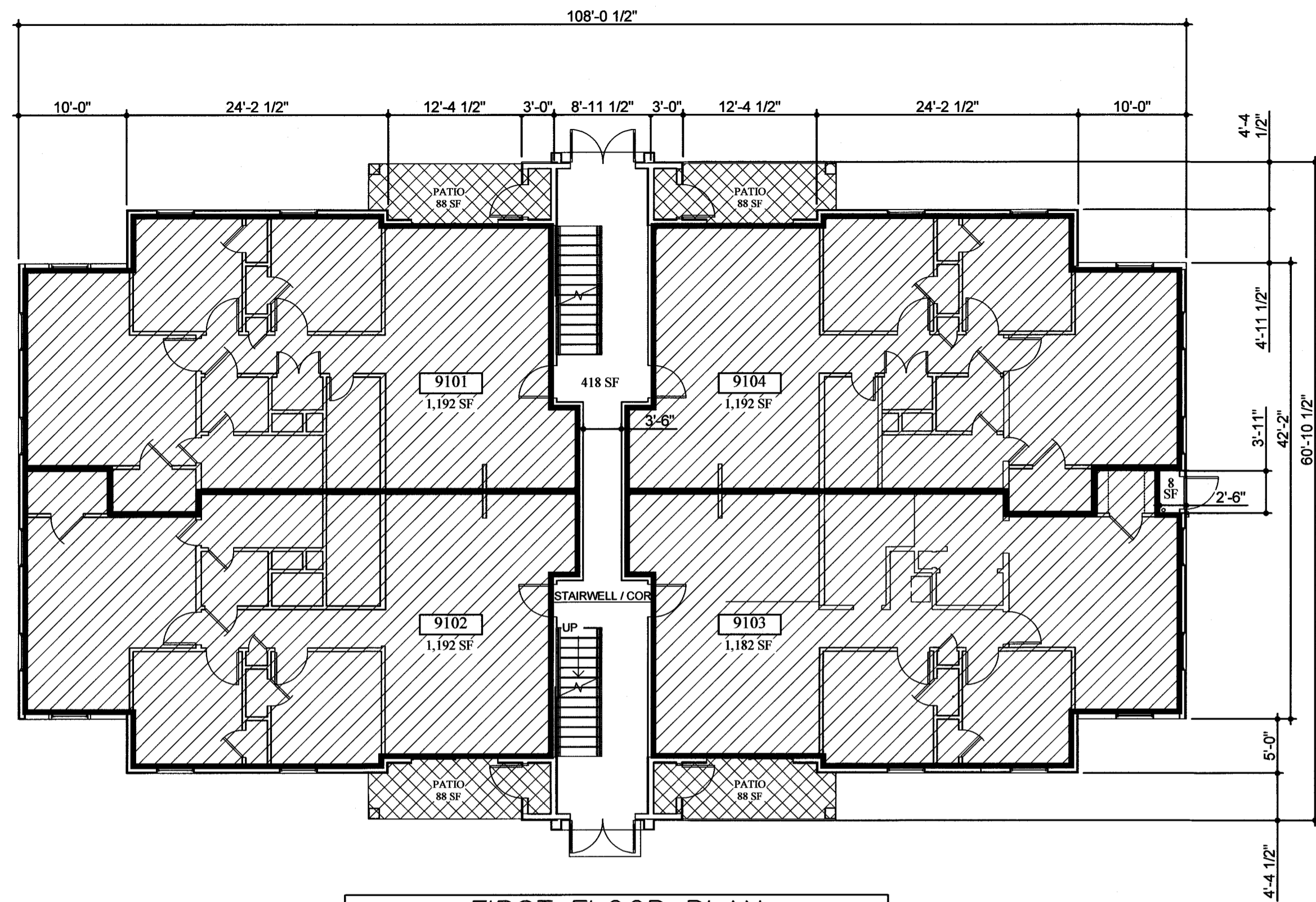
**THE VILLAGE ON 12TH  
CONDO BUILDING 10**

LOCATED IN THE SOUTHEAST QUARTER OF SECTION 5, T4S, R5E, SLB&M  
A UTAH CONDOMINIUM PROJECT, HEBER CITY, WASATCH COUNTY, STATE OF UTAH  
SCALE: 1" = 10 FEET SHEET 3 of 5

FINISHED FLOOR OF BUILDING ELEVATION 100'-0" = 5685.00  
BENCHMARK FOR THE VILLAGE ON 12TH IS THE SOUTH QUARTER CORNER MONUMENT OF SECTION 5, TOWNSHIP 4 SOUTH, RANGE 5 EAST, SALT LAKE BASE AND MERIDIAN. ELEVATION OF MONUMENT = 5664.08 FEET.

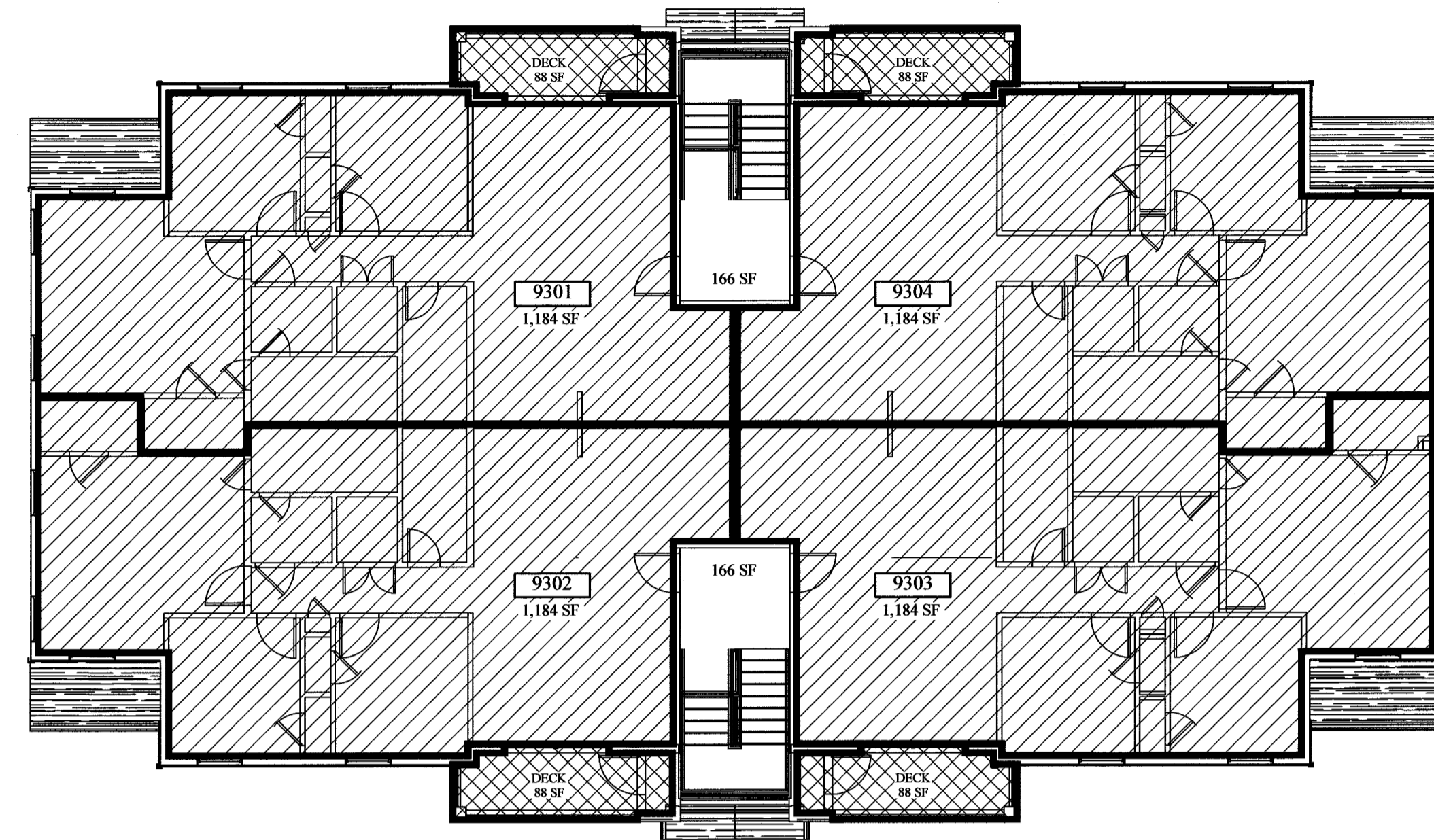
ENTRY # 445330 BOOK 1207 PAGE 1466-1515  
DATE 11-17-2017 TIME 8:55 AM FEE 174.00  
FOR ART CITY INVESTMENTS, LLC  
BY LA WASATCH COUNTY RECORDER PEGGY FOY SULLER

SURVEYOR'S SEAL	NOTARY PUBLIC SEAL	CITY ENGINEER SEAL	CLERK-RECORDER SEAL



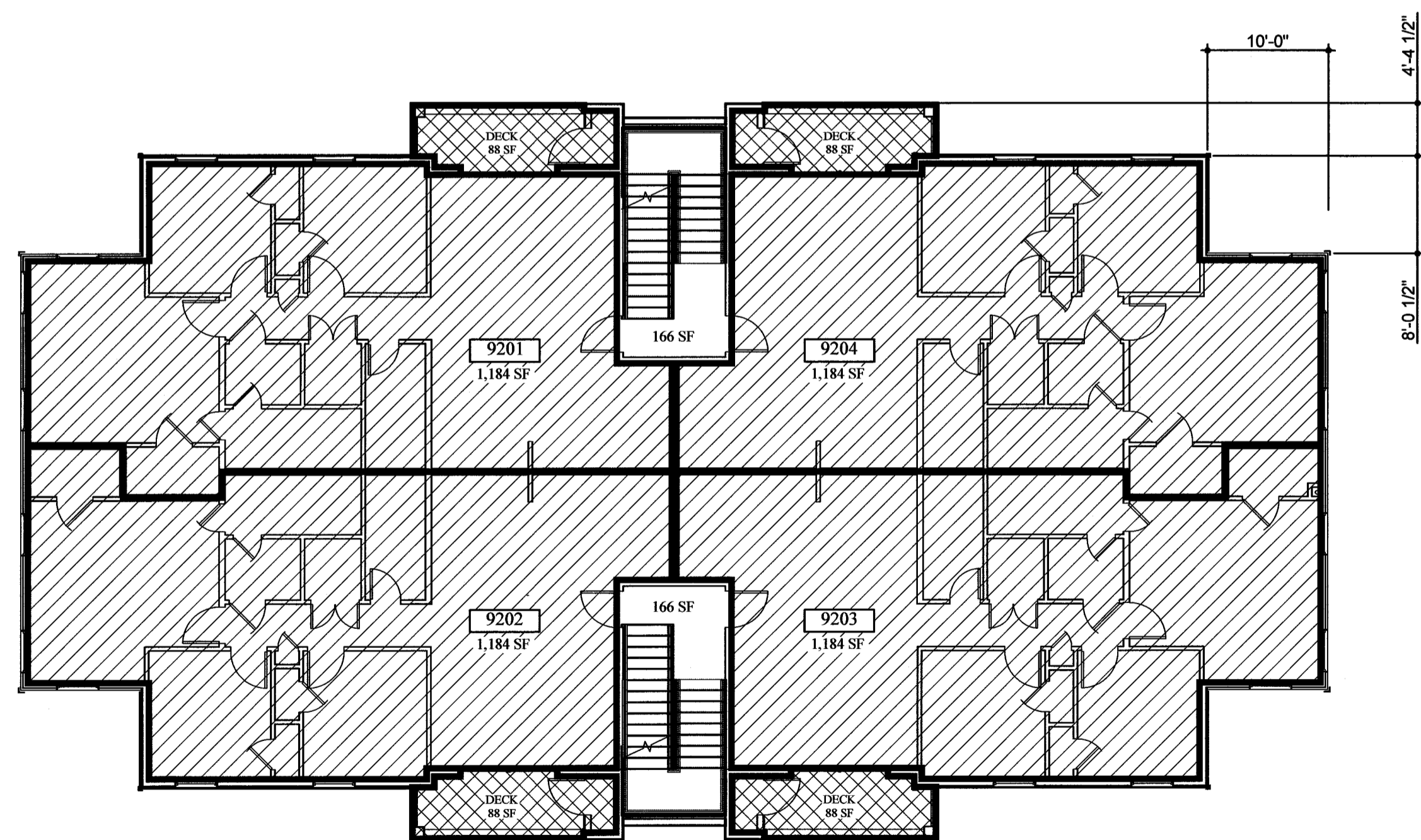
FIRST FLOOR PLAN

DIMENSIONS SHOWN ARE TYPICAL FOR ALL FIRST FLOOR UNITS



THIRD FLOOR PLAN

DIMENSIONS FOR THIRD FLOOR MATCHES SECOND FLOOR



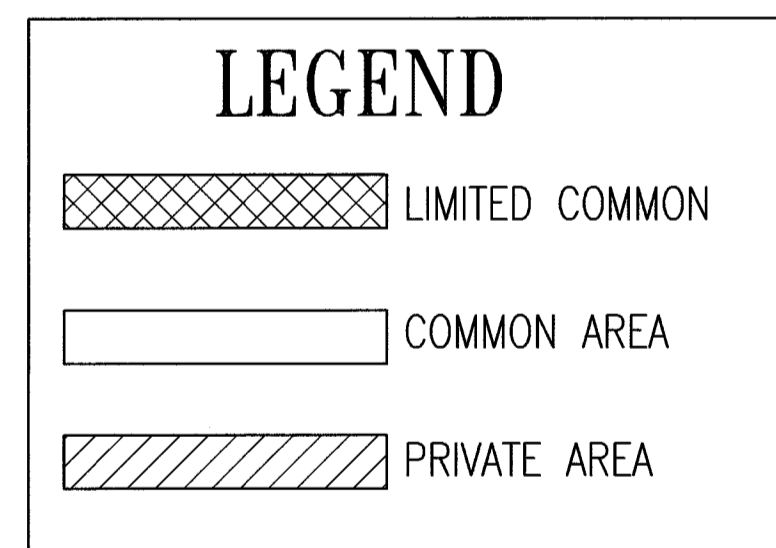
SECOND FLOOR PLAN

DIMENSIONS SHOWN SHOW CHANGES FROM FIRST TO SECOND FLOOR

1ST FLOOR  
 LIMITED COMMON 352 SF  
 COMMON AREA 426 SF  
 PRIVATE AREA 4,758 SF

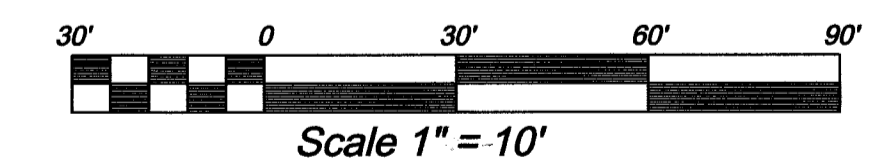
2ND FLOOR  
 LIMITED COMMON 352 SF  
 COMMON AREA 332 SF  
 PRIVATE AREA 4,736 SF

3RD FLOOR  
 LIMITED COMMON 352 SF  
 COMMON AREA 332 SF  
 PRIVATE AREA 4,736 SF



NOTES:

1. PLANS AND DIMENSIONS SHOWN ON THIS PLAT WERE COMPILED FROM ARCHITECTURAL DRAWINGS PREPARED BY ARCHITECTURAL COALITION, 1991 SOUTH STATE ROAD, SPRINGVILLE UTAH, 84663 (801) 491-0275
2. ALL UNIT EXTERIOR DIMENSIONS ARE TO THE OUTSIDE WALL.
3. ALL UNIT INTERIOR DIMENSIONS ARE TO THE MIDDLE OF WALL.
4. FOR COMPLETE DESCRIPTION OF OWNERSHIP COVENANTS, RESTRICTIONS AND CONDITIONS REFER TO THE VILLAGE ON 12TH RECIPROCAL EASEMENT AGREEMENT BOOK \_\_\_\_\_ PAGES \_\_\_\_\_.
5. ALL PRIVATE, COMMON AND LIMITED COMMON AREAS EXTEND TO THE CENTER OF THE WALL.
6. ALL UNITS HAVE THE SAME INTERIOR DIMENSIONS.



ADDRESS BLOCK

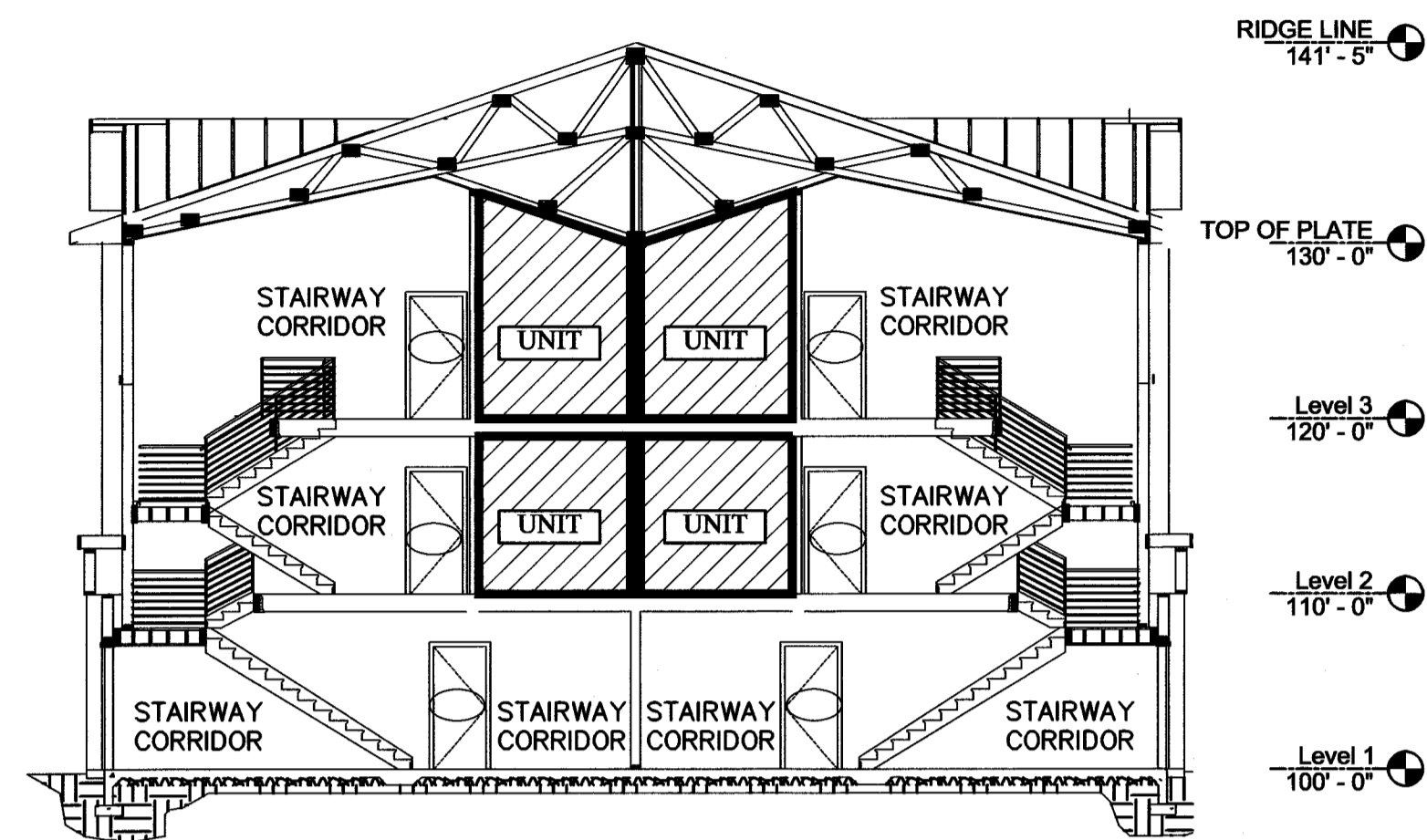
UNIT	ADDRESS
FIRST FLOOR	
9101	1128 SOUTH 820 EAST UNIT 9101
9102	1128 SOUTH 820 EAST UNIT 9102
9103	1128 SOUTH 820 EAST UNIT 9103
9104	1128 SOUTH 820 EAST UNIT 9104
SECOND FLOOR	
9201	1128 SOUTH 820 EAST UNIT 9201
9202	1128 SOUTH 820 EAST UNIT 9202
9203	1128 SOUTH 820 EAST UNIT 9203
9204	1128 SOUTH 820 EAST UNIT 9204
THIRD FLOOR	
9301	1128 SOUTH 820 EAST UNIT 9301
9302	1128 SOUTH 820 EAST UNIT 9302
9303	1128 SOUTH 820 EAST UNIT 9303
9304	1128 SOUTH 820 EAST UNIT 9304

ENTRY # 445330 BOOK 1201 PAGE 1416-1515  
 DATE 11-17-2017 TIME 8:55 AM FEE 174.00  
 FOR ART CITY INVESTMENTS LLC  
 BY LA WASATCH COUNTY RECORDER PEGGY FOY SULLSER

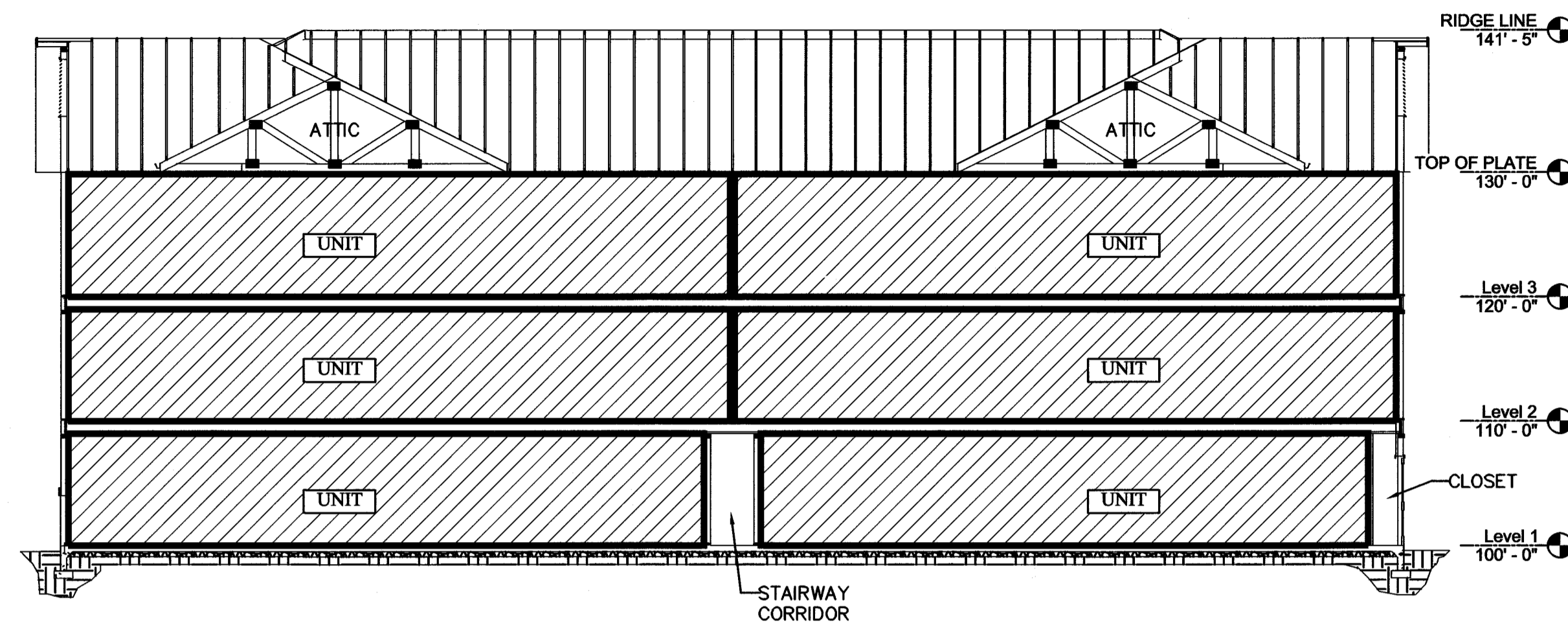
THE VILLAGE ON 12TH  
 CONDO BUILDING 9

LOCATED IN THE SOUTHEAST QUARTER OF SECTION 5, T4S, R5E, SLB&M  
 A UTAH CONDOMINIUM PROJECT, HEBER CITY, WASATCH COUNTY, STATE OF UTAH  
 SCALE: 1" = 10 FEET SHEET 4 of 5

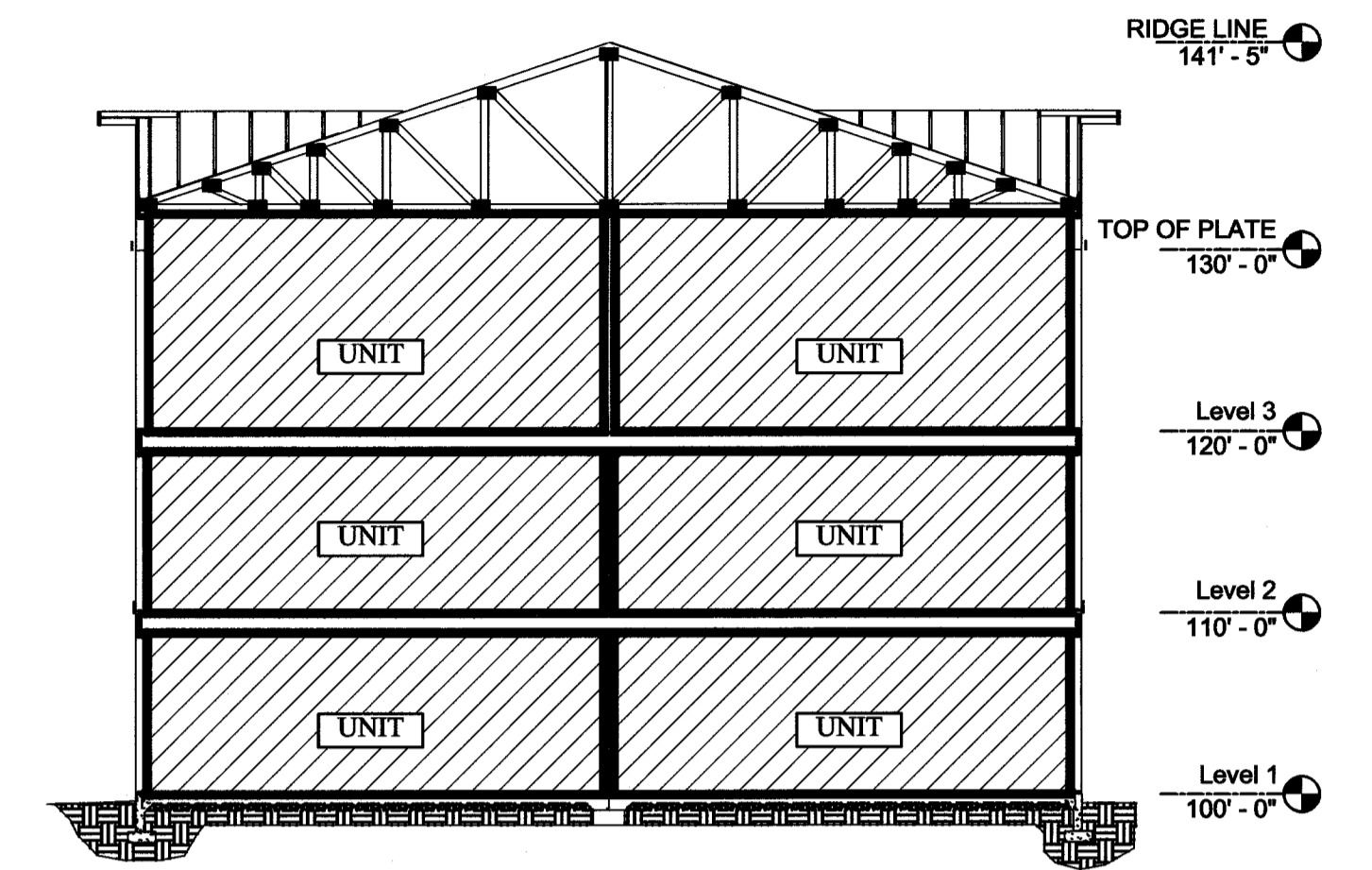
SURVEYOR'S SEAL NOTARY PUBLIC SEAL CITY ENGINEER SEAL CLERK-RECORDER SEAL



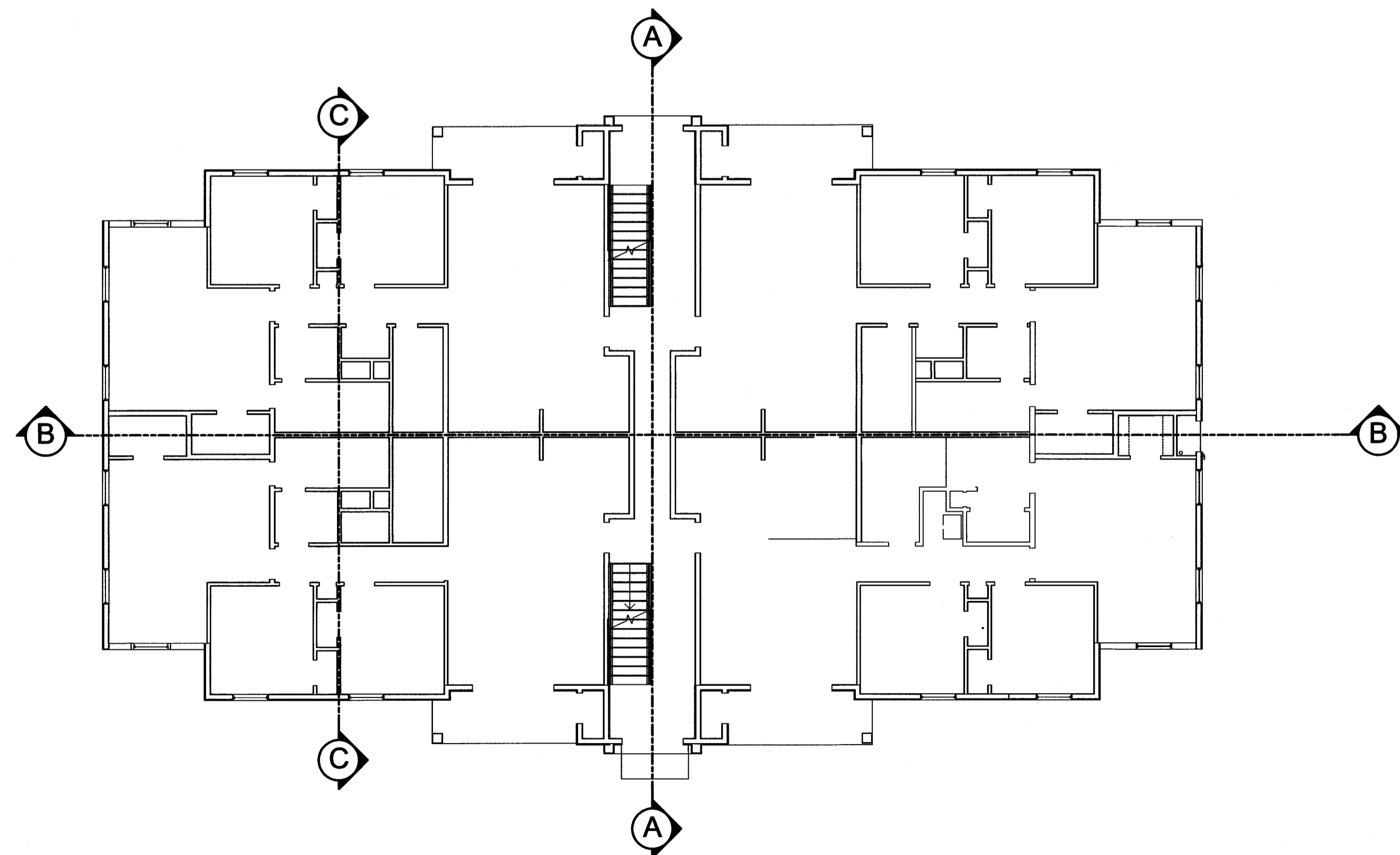
TYPICAL SECTION A-A



TYPICAL SECTION B-B



TYPICAL SECTION C-C



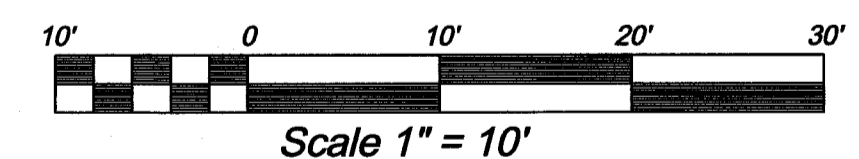
SECTION KEY

**LEGEND**

- LIMITED COMMON
- COMMON AREA
- PRIVATE AREA

**NOTES:**

1. PLANS AND DIMENSIONS SHOWN ON THIS PLAT WERE COMPILED FROM ARCHITECTURAL DRAWINGS PREPARED BY ARCHITECTURAL COALITION, 1991 SOUTH STATE ROAD, SPRINGVILLE UTAH, 84663 (801) 491-0275
2. ALL UNIT EXTERIOR DIMENSIONS ARE TO THE OUTSIDE WALL.
3. ALL UNIT INTERIOR DIMENSIONS ARE TO THE MIDDLE OF WALL.
4. FOR COMPLETE DESCRIPTION OF OWNERSHIP COVENANTS, RESTRICTIONS AND CONDITIONS REFER TO THE VILLAGE ON 12TH RECIPROCAL EASEMENT AGREEMENT BOOK \_\_\_\_\_ PAGES \_\_\_\_\_.
5. ALL PRIVATE, COMMON AND LIMITED COMMON AREAS EXTEND TO THE CENTER OF THE WALL.
6. ALL UNITS HAVE THE SAME INTERIOR DIMENSIONS.



FINISHED FLOOR OF BUILDING ELEVATION 100'-0" = 5684.50  
 BENCHMARK FOR THE VILLAGE ON 12TH IS THE SOUTH QUARTER CORNER MONUMENT OF SECTION 5, TOWNSHIP 4 SOUTH, RANGE 5 EAST, SALT LAKE BASE AND MERIDIAN. ELEVATION OF MONUMENT = 5664.08 FEET.

**THE VILLAGE ON 12TH  
 CONDO BUILDING 9**

LOCATED IN THE SOUTHEAST QUARTER OF SECTION 5, T4S, R5E, SLB&M  
 A UTAH CONDOMINIUM PROJECT, HEBER CITY, WASATCH COUNTY, STATE OF UTAH  
 SCALE: 1" = 10 FEET SHEET 5 of 5

SURVEYOR'S SEAL	NOTARY PUBLIC SEAL	CITY ENGINEER SEAL	CLERK-RECORDER SEAL

ENTRY # 445330 BOOK 1207 PAGE 1466-1515  
 DATE 11-17-2017 TIME 8:55 AM FEE 174.00  
 FOR ART CITY INVESTMENTS, LLC  
 BY LA WASATCH COUNTY RECORDER PEGGY FOY SULSER

THE VILLAGE ON 12TH BUILDING 9 - 11 OCT 2017