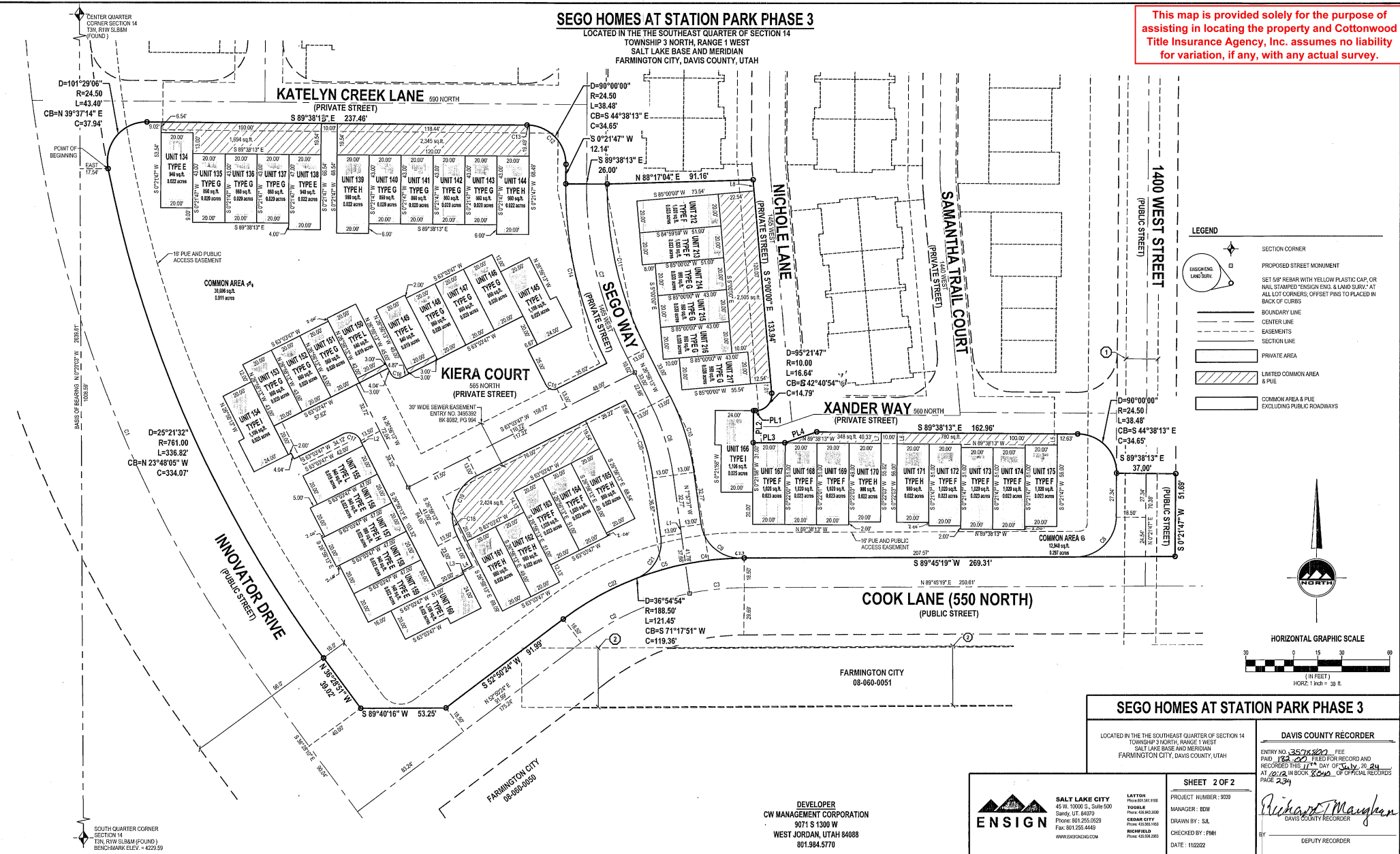




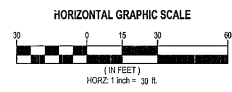
# SEGO HOMES AT STATION PARK PHASE 3

LOCATED IN THE THE SOUTHEAST QUARTER OF SECTION 14  
TOWNSHIP 3 NORTH, RANGE 1 WEST  
SALT LAKE BASE AND MERIDIAN  
FARMINGTON CITY, DAVIS COUNTY, UTAH

This map is provided solely for the purpose of assisting in locating the property and Cottonwood Title Insurance Agency, Inc. assumes no liability for variation, if any, with any actual survey.



- LEGEND**
- SECTION CORNER
  - PROPOSED STREET MONUMENT
  - SET 5/8" REBAR WITH YELLOW PLASTIC CAP, OR NAIL STAMPED "ENSGR ENCS & LAND SURV" AT ALL LOT CORNERS; OFFSET PINS TO BE PLACED IN BACK OF CURBS
  - BOUNDARY LINE
  - CENTER LINE
  - EASEMENTS
  - SECTION LINE
  - PRIVATE AREA
  - LIMITED COMMON AREA & PUE
  - COMMON AREA & PUE EXCLUDING PUBLIC ROADWAYS



## SEGO HOMES AT STATION PARK PHASE 3

LOCATED IN THE THE SOUTHEAST QUARTER OF SECTION 14  
TOWNSHIP 3 NORTH, RANGE 1 WEST  
SALT LAKE BASE AND MERIDIAN  
FARMINGTON CITY, DAVIS COUNTY, UTAH

DAVIS COUNTY RECORDER

ENTRY NO. 357822 FEE PAID 152.00 FILED FOR RECORD AND RECORDED THIS 17 DAY OF July 2024 AT 2:29 IN BOOK 3020 OF OFFICIAL RECORDS PAGE 234

SHEET 2 OF 2

PROJECT NUMBER: 9039  
MANAGER: BDM  
DRAWN BY: SDL  
CHECKED BY: FMH  
DATE: 11/22/22

*Richard Johnson*  
DAVIS COUNTY RECORDER  
DEPUTY RECORDER



**SALT LAKE CITY**  
45 W. 1000 S., Suite 500  
Sandy, UT 84070  
Phone: 801.255.0529  
Fax: 801.255.0449  
WWW.ENSHINCORP.COM

DEVELOPER  
CW MANAGEMENT CORPORATION  
9071 S 1300 W  
WEST JORDAN, UTAH 84088  
801.984.5770

FARMINGTON CITY  
08-060-0051

SOUTH QUARTER CORNER  
SECTION 14  
T3N, R1W, S14M (FOUND)  
BENCHMARK ELEV. = 4225.59

CENTER QUARTER  
CORNER SECTION 14  
T3N, R1W, S14M  
(FOUND)