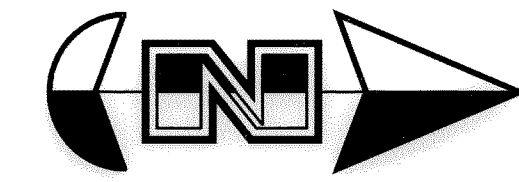


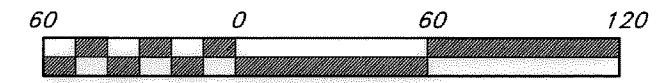
Valley Station

Subdivision

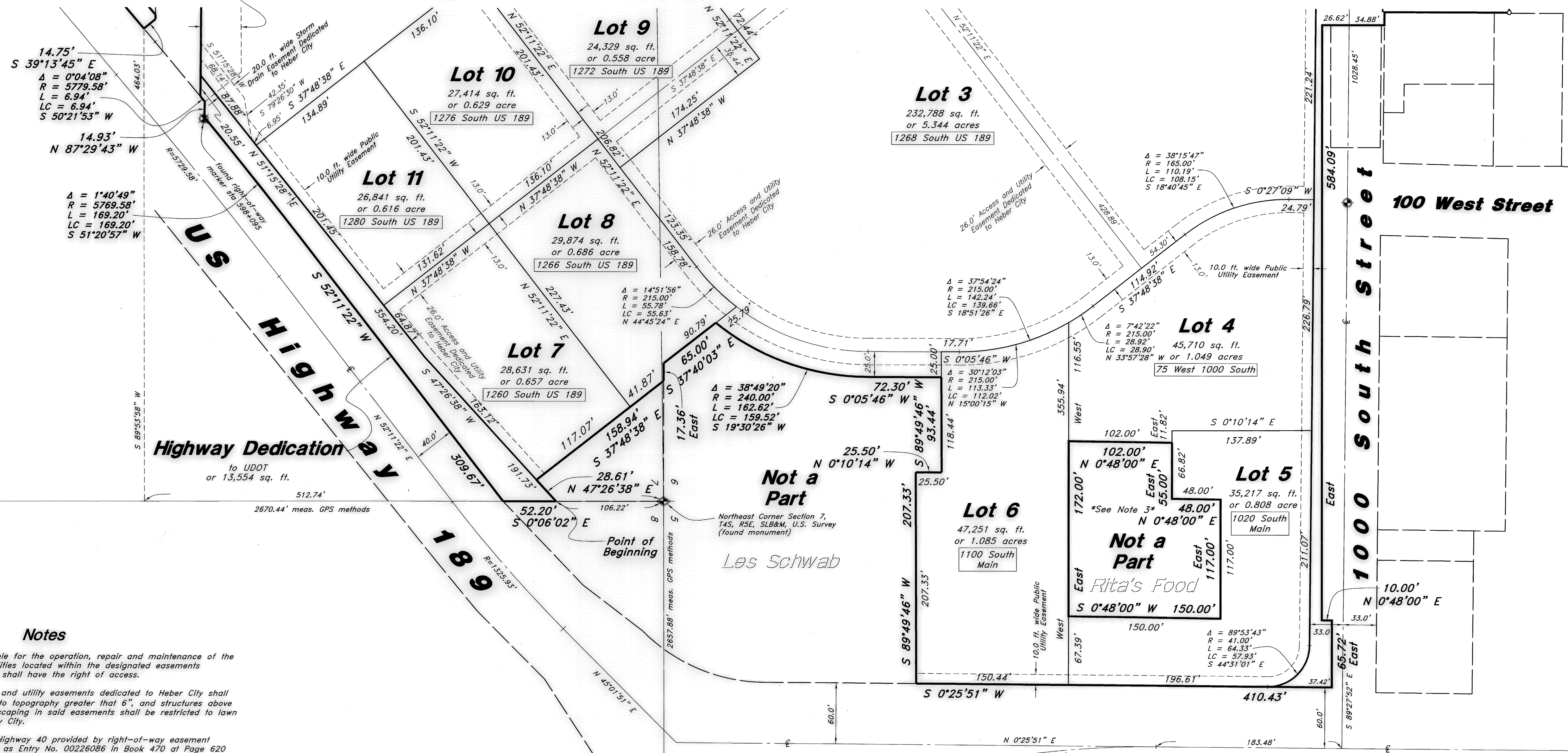
Being a part of the Southwest Quarter of Section 5, the Southeast Quarter of Section 6, and the Northeast Quarter of Section 7,
Township 4 South, Range 5 East, Salt Lake Base and Meridian, U.S. Survey
Heber City, Wasatch County, Utah
July 2008



Scale : 1" = 60'



Irrigation easement recorded July 18, 2008, as Entry No. 338207, in Book 971, at Page 589.



Notes

- 1 - Heber City shall be responsible for the operation, repair and maintenance of the water and sewer public facilities located within the designated easements dedicated to Heber City and shall have the right of access.
- 2 - Drainage easements, access and utility easements dedicated to Heber City shall prohibit cuts, fills, changes to topography greater than 6", and structures above or below ground. Any landscaping in said easements shall be restricted to lawn where approved in writing by City.
- 3 - Access to this parcel from Highway 40 provided by right-of-way easement recorded as August 3, 2000 as Entry No. 00228086 in Book 470 at Page 620 Official Records of Wasatch County.
- 4 - Lots not abutting a public right-of-way will not be sold or transferred until a cross access agreement has been recorded granting public access to the lot.

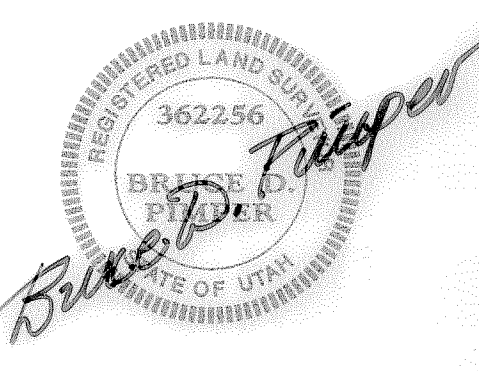
GREAT BASIN ENGINEERING - SOUTH
CONSULTING ENGINEERS and LAND SURVEYORS
2010 North Redwood Road, P.O. Box 16747
Salt Lake City, Utah 84116
Salt Lake City (801)521-8529 Ogden (801)384-7288 Fax (801)521-8551

North Quarter Corner Section 8,
T4S, R5E, SLB&M, U.S. Survey
(found monument)

Legend

- Centerline Monument set
- Section Corner
- Property Line
- Easement Line
- Centerline
- Section Line
- Set Rebar with GBES Plastic Cap
- Set Nail with GBES Brass Tag

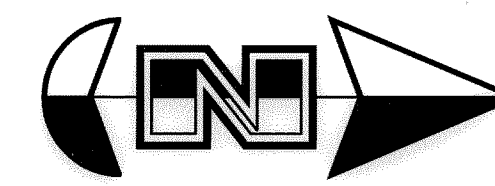
ENTRY # 339271 DATE 8-20-08 TIME 8:48
FEE 137.00 BY 972 PG 4 FOR 8458
BY GILLES WASATCH COUNTY RECORDER ELIZABETH M PALMIER
PG 2269-2308



Valley Station

Subdivision

Being a part of the Southwest Quarter of Section 5, the Southeast Quarter of Section 6, and the Northeast Quarter of Section 7,
Township 4 South, Range 5 East, Salt Lake Base and Meridian, U.S. Survey
Heber City, Wasatch County, Utah
July 2008

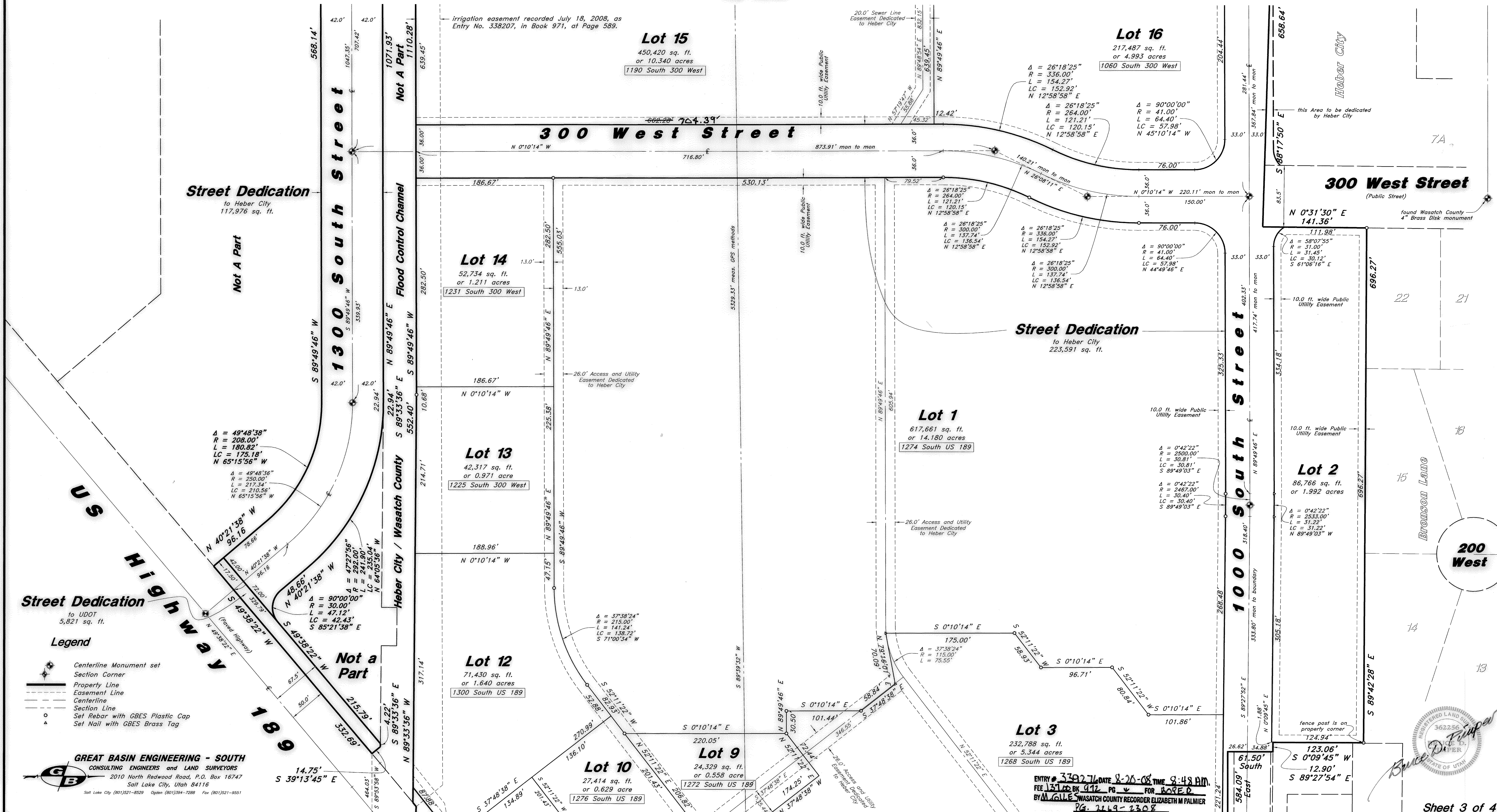


Scale: 1" = 60'



Notes

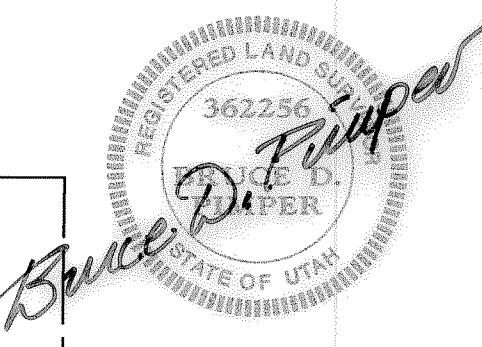
- 1 - Heber City shall be responsible for the operation, repair and maintenance of the water and sewer public facilities located within the designated easements dedicated to Heber City and shall have the right of access.
- 2 - Drainage easements, access and utility easements dedicated to Heber City shall prohibit cuts, fills, changes to topography greater than 6", and structures above or below ground. Any landscaping in said easements shall be restricted to lawn where approved in writing by City.
- 3 - Access to this parcel from Highway 40 provided by right-of-way easement recorded as August 3, 2000 as Entry No. 00226086 in Book 470 at Page 620 Official Records of Wasatch County.
- 4 - Lots not abutting a public right-of-way will not be sold or transferred until a cross access agreement has been recorded granting public access to the lot.



- ### Legend
- Centerline Monument set
 - Section Corner
 - Property Line
 - Easement Line
 - Centerline
 - Section Line
 - Set Rebar with GBES Plastic Cap
 - Set Nail with GBES Brass Tag

GREAT BASIN ENGINEERING - SOUTH
CONSULTING ENGINEERS and LAND SURVEYORS
2010 North Redwood Road, P.O. Box 16747
Salt Lake City, Utah 84116
Salt Lake City (801)521-8529 Ogden (801)344-7288 Fax (801)521-9551

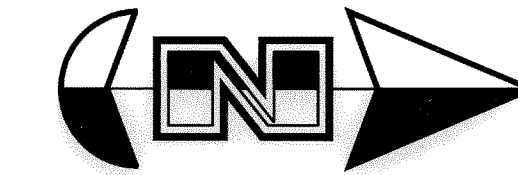
ENTRY # 338276 DATE 8-20-08 TIME 9:48 AM
FEE \$31.00 BK 912 PG 9 FOR BORE
BY M. GALE WASATCH COUNTY RECORDER ELIZABETH M PALMER
PG. 2149-2308



Valley Station

Subdivision

Being a part of the Southwest Quarter of Section 5, the Southeast Quarter of Section 6, and the Northeast Quarter of Section 7,
Township 4 South, Range 5 East, Salt Lake Base and Meridian, U.S. Survey
Heber City, Wasatch County, Utah
July 2008



Scale: 1" = 60'

- Notes**
- 1 - Heber City shall be responsible for the operation, repair and maintenance of the water and sewer public facilities located within the designated easements dedicated to Heber City and shall have the right of access.
 - 2 - Drainage easements, access and utility easements dedicated to Heber City shall prohibit cuts, fills, changes to topography greater than 6", and structures above or below ground. Any landscaping in said easements shall be restricted to lawn where approved in writing by City.
 - 3 - Access to this parcel from Highway 40 provided by right-of-way easement recorded as August 3, 2000 as Entry No. 00226086 in Book 470 at Page 620 Official Records of Wasatch County.
 - 4 - Lots not abutting a public right-of-way will not be sold or transferred until a cross access agreement has been recorded granting public access to the lot.

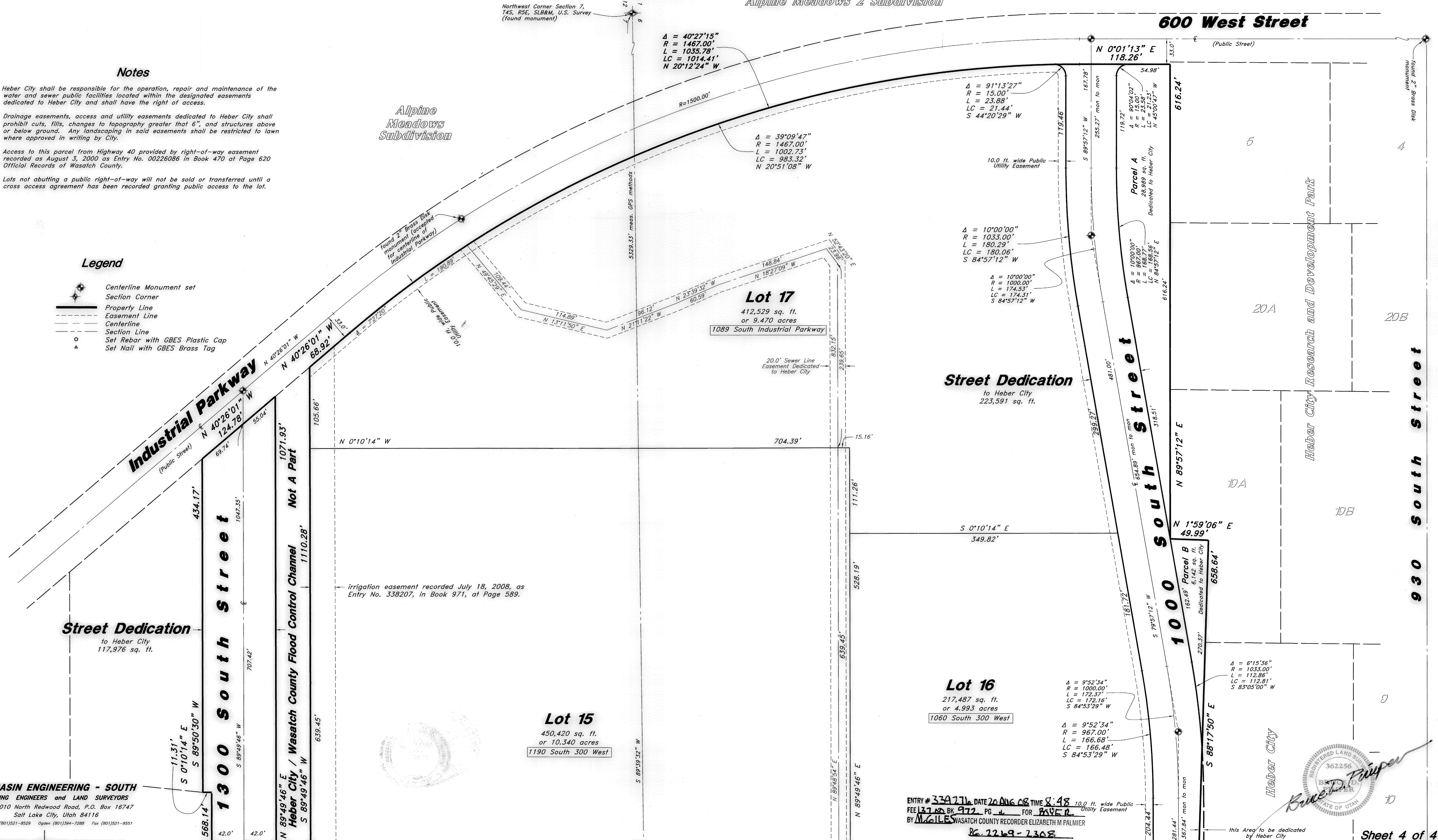
Legend

- Centerline Monument set Section Corner
- Property Line Easement Line Centerline Section Line
- Set Rebar with GBES Plastic Cap Set Nail with GBES Brass Tag

Northwest Corner Section 7, T4S, R5E, SL&M, U.S. Survey (found monument)

Alpine Meadows 2 Subdivision

600 West Street



GREAT BASIN ENGINEERING - SOUTH
CONSULTING ENGINEERS and LAND SURVEYORS
2010 North Redwood Road, P.O. Box 16747
Salt Lake City, Utah 84116
Salt Lake City (801)521-8529 Ogden (801)394-7288 Fax (801)521-8551

ENTRY # 330211, DATE 26 AUG 08, TIME 8:48
FEE \$17.00 BY 972 PG 4 FOR RAVE 2
BY MABLE WASATCH COUNTY RECORDER ELIZABETH M PALMIER
26-2269-2308

