



OFFICE OF THE LIEUTENANT GOVERNOR

CERTIFICATE OF CREATION

I, GREG BELL, LIEUTENANT GOVERNOR OF THE STATE OF UTAH,  
HEREBY CERTIFY THAT there has been filed in my office a notice of creation of the  
DESERET PEAK SPECIAL SERVICE DISTRICT, dated June 2<sup>nd</sup>, 2009, complying  
with Section 17D-1-209, Utah Code Annotated, 1953, as amended.

NOW, THEREFORE, notice is hereby given to all whom it may concern that the  
attached is a true and correct copy of the notice of creation, referred to above, on file with  
the Office of the Lieutenant Governor pertaining to the DESERET PEAK SPECIAL  
SERVICE DISTRICT, located in Tooele County, State of Utah.

IN TESTIMONY WHEREOF, I  
have hereunto set my hand and  
affixed the Great Seal of the State of  
Utah at Salt Lake City, this 6<sup>th</sup> day of  
October, 2009.

  
\_\_\_\_\_  
GREG BELL  
Lieutenant Governor



# TOOELE COUNTY CLERK

## TOOELE COUNTY COURTHOUSE

**MARILYN K. GILLETTE**  
Tooele County Clerk

47 South Main Street  
Tooele, Utah 84074-2194  
(435)843-3140/Fax (435)882-7317  
[www.co.Tooele.ut.us/Clerk.htm](http://www.co.Tooele.ut.us/Clerk.htm)

**DEBBIE SMART**  
Chief Deputy Clerk

September 16, 2009

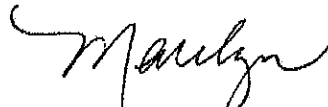
*Lieutenant Governor's Office  
Attn: Justin Siebenhaar  
Utah State Capitol Complex  
East Office Building, Suite #325  
PO Box 142325  
SLC, UT 84114-2325*

*Dear Justin:*

*Enclosed please find the two Special Service Districts that have been created by the Tooele County Commission. I am resubmitting them for certification by the Lieutenant Governor's Office, with the required maps.*

*Please send the certificate's to my attention at the above address.*

Sincerely, -



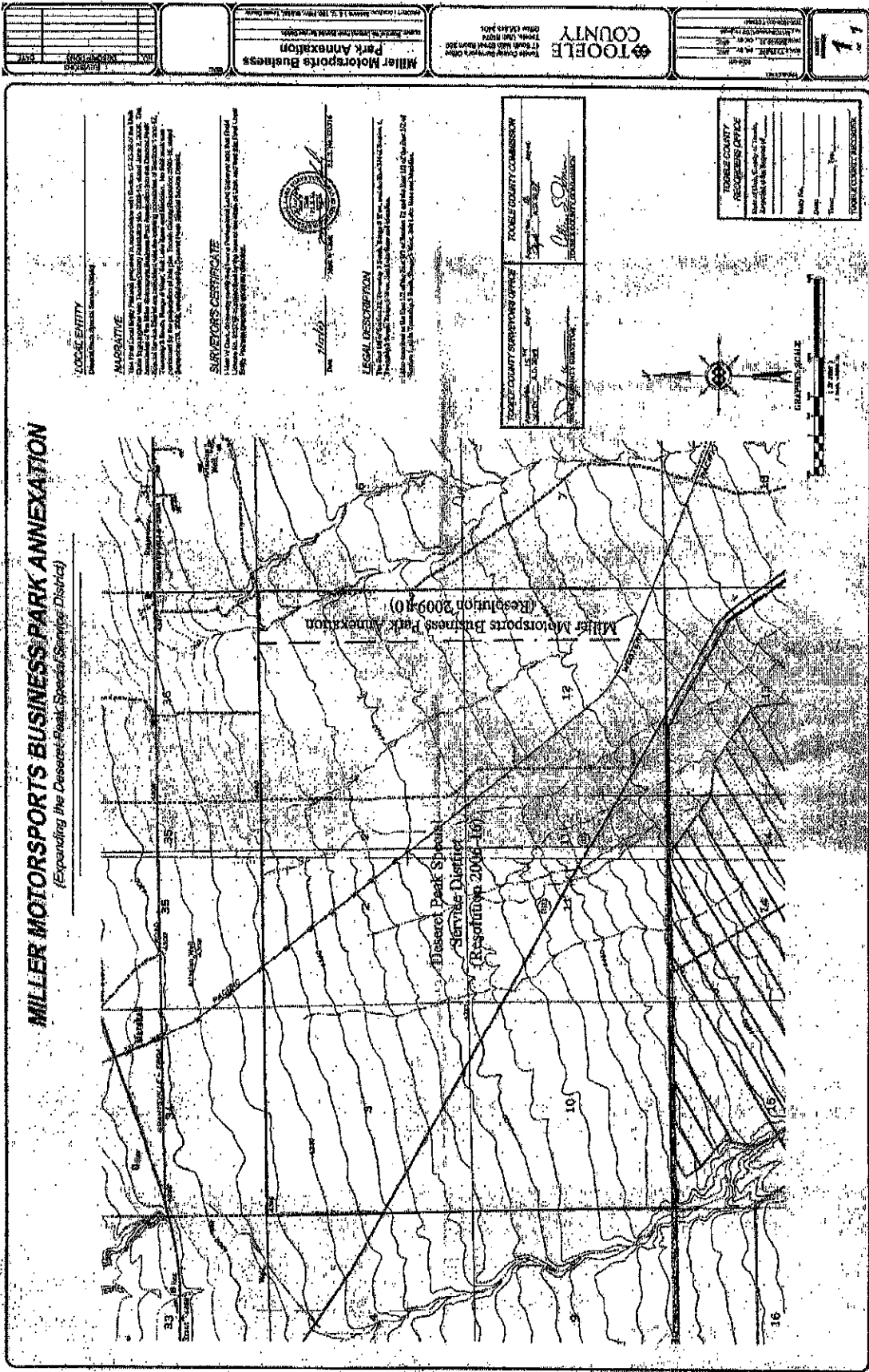
Marilyn K. Gillette  
Tooele County Clerk

# Received

SEP 21 2009

1299 Sent 9/21

Greg Bell  
Lieutenant Governor



Ent: 327246 - Pg 1 of 1  
Date: 6/8/2009 3:07 PM  
Fee: \$0.00 NO CHARGE  
Filed By: MT  
CALLEEN B PESWELL, Recorder  
Tooele County Corporation  
RESOLUTION 2009-10: TOOELE COUNTY COMMISSION

**A RESOLUTION ANNEXING APPROXIMATELY 320 ADDITIONAL ACRES INTO THE DESERET PEAK SPECIAL SERVICE DISTRICT**

WHEREAS, the Board of the Deseret Peak Special Service District received a petition from Giza Development requesting annexation of the Miller Motorsports Business Park property into the Deseret Peak Special Service District heretofore created on September 19, 2006 by Tooele County Resolution 2006-16 pursuant to the provisions of the Utah Special Service District Act, Section 17A-2-1301 et seq., Utah Code Annotated, 1953, as amended, and Article XIV, Section 8 of the Constitution of Utah; and

WHEREAS, the Board of the Deseret Peak Special Service District, by Resolution 2009-01, has approved the annexation of said property into the District.

NOW, THEREFORE, BE IT RESOLVED BY THE TOOELE COUNTY COMMISSION that the following property owned by Giza Development / Miller Family Trust, containing approximately 320 acres, is annexed into the Deseret Peak Special Service District:

The East ¼ of Section 12, Township 3 South, Range 5 West, and the East ¼ of Section 1, Township 3 South, Range 5 West.

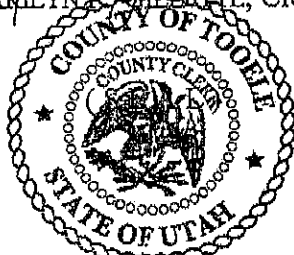
APPROVED AND ADOPTED this 2<sup>nd</sup> day of June 2009.

ATTEST:

TOOELE COUNTY COMMISSION:

*Marilyn K. Hellette*  
MARILYN K. HELLETTE, Clerk

*Colleen S. Johnson*  
COLLEEN S. JOHNSON, Chairman



Commissioner Johnson voted *aye*  
Commissioner Clegg voted *aye*  
Commissioner Hurst voted *aye*

**Received**

APPROVED AS TO FORM:

*Doug Hogan*  
DOUG HOGAN  
Tooele County Attorney

SEP 21 2009  
*Greg Bell*  
Greg Bell  
Lieutenant Governor