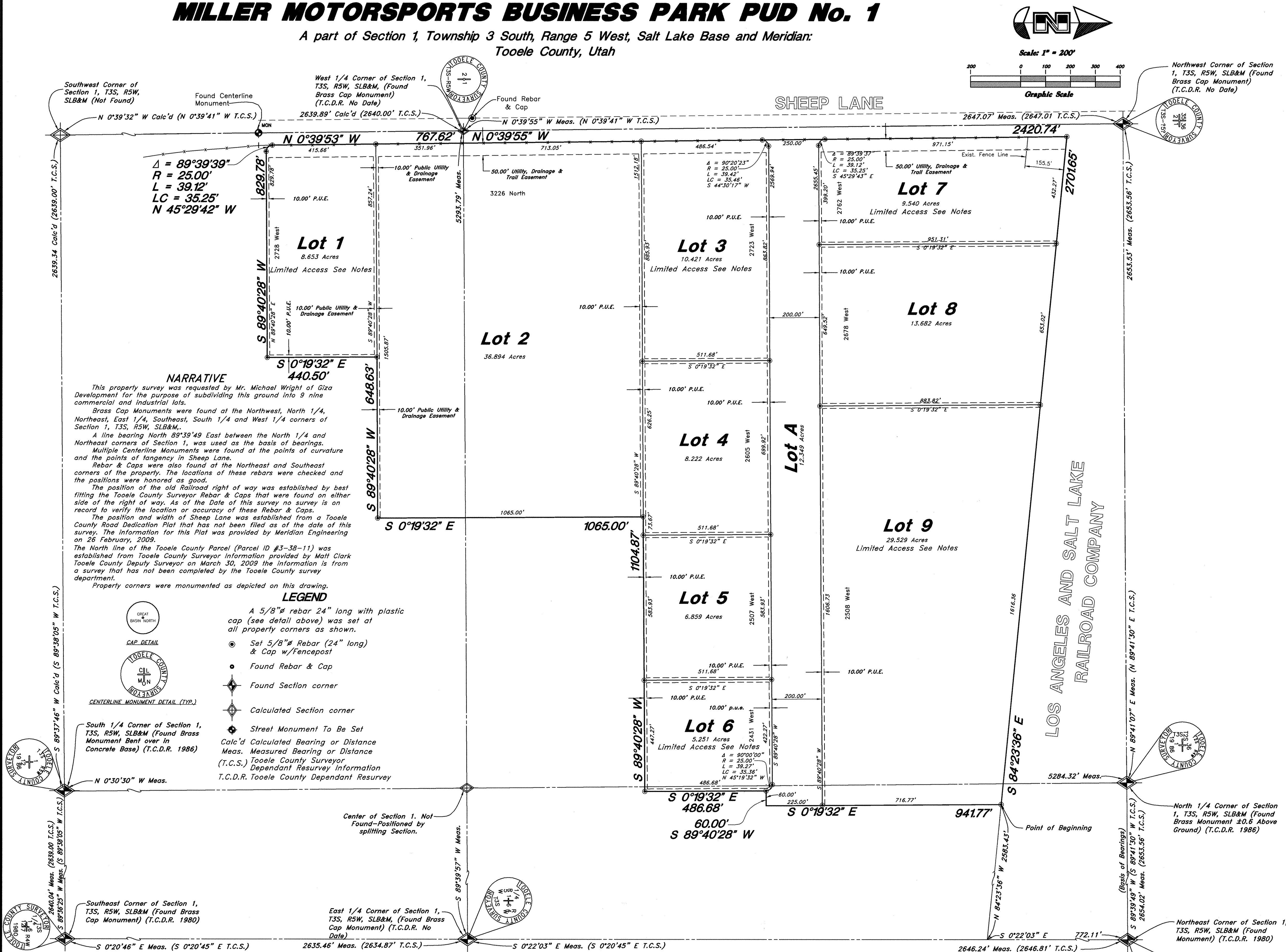


MILLER MOTORSPORTS BUSINESS PARK PUD No. 1

A part of Section 1, Township 3 South, Range 5 West, Salt Lake Base and Meridian:
Tooele County, Utah



DESERET PEAK SPECIAL SERVICE DISTRICT Approved this 31 day of March, 2009. <i>Colleen S. Johnson</i> Director, Special Service District	TOOELE COUNTY ENGINEER Approved this 31 day of March, 2009. <i>U. S. Zacher</i> Director, Tooele County Engineer Dept.	DESERET PEAK COMMERCIAL PROJECT AREA Approved this 31 day of March, 2009. <i>Colleen S. Johnson</i> Director, Special Service District	NOTES: 1. Access to Lots 4-6 & 8-9 will be limited and Shared see Development Agreement.	TOOELE COUNTY PLANNING COMMISSION Approved this 31 day of March, 2009 by the Tooele County Planning Commission. <i>William J. Hooper</i> Tooele County Planning Commission	TOOELE COUNTY SURVEYOR I hereby certify that this office has examined this plat and it is correct in accordance with the information. Signed this 31 day of March, 2009. <i>Ros Ann W. 09-0030</i> Tooele County Surveyor	NORTH TOOELE COUNTY FIRE DEPARTMENT Approved this 31 day of March, 2009 by the North Tooele County Fire Department. <i>M. J. [Signature]</i> Chief, North Tooele County Fire Department	TOOELE COUNTY RECORDER RECORDED NO. 324129 STATE OF UTAH, COUNTY OF TOOELE, RECORDED AND FILED AT THE REQUEST OF [Signature] DATE 4/1/09 TIME 2:43 pm BOOK 1/4 PAGE 16/18 FEE PAID \$ 39.00 <i>[Signature]</i> TOOELE COUNTY RECORDER
---	--	--	--	--	--	---	--

SURVEYOR'S CERTIFICATE

I, Andy Hubbard, do hereby certify that I am a Professional Land Surveyor in the State of Utah, and that I hold Certification No. 6242920 in accordance with Title 58, Chapter 22, of the Professional Engineers and Land Surveyors Licensing Act. I also certify that this plat of Miller Motorsports Business Park PUD No. 1 in Tooele County, Utah has been correctly drawn to the designated scale and is a true and correct representation of the following description of lands included in said subdivision, based on data compiled from records in the Tooele County Recorder's Office, and of a survey made on the ground in accordance with Section 17-23-17. Monuments have been set as depicted on this drawing.

Signed this 31st day of March, 2009.

[Signature]
Andy Hubbard
STATE OF UTAH

OWNER'S DEDICATION

Know all men by these presents that the undersigned are the owners of the hereon described tract of land and hereby cause the same to be divided into lots and streets together with easements as set forth hereafter to be known as Miller Motorsports Business Park PUD No. 1. The undersigned owners hereby dedicate to Tooele County those certain strips as easements for utility drainage and recreational trail purposes as shown hereon, the same to be used for the installation, maintenance, and operation of utility lines, drainage, and recreational trails as may be authorized by Tooele County.

The undersigned owners also hereby convey to any and all public and private utility companies a perpetual, non-exclusive easement over the public utility easements shown on this plat, the same to be used for drainage and the installation, maintenance and operation of utility service lines and facilities.

Gregory S. Miller
Miller Family Real Estate, LLC
Gregory S. Miller - Operating Manager

Colleen S. Johnson
Tooele County
Colleen S. Johnson - Chairman
Tooele County Commission

Marilyn K. Gillette
Marilyn K. Gillette - Tooele County Clerk

ACKNOWLEDGMENTS

State of Utah ss
County of Salt Lake

On the 31 day of MARCH, 2009, personally appeared before me Gregory S. Miller, who being by me duly sworn did say that he is Operating Manager of the Miller Family Real Estate, LLC and that said instrument was signed in behalf of said LLC by a resolution of its Members and Gregory S. Miller acknowledged to me that said LLC executed the same.

Residing At: TOOELE COUNTY
Tobie A. Warner
A Notary Public commissioned in Utah

Commission Expires: 09-15-2010
Tobie A. Warner
Print Name

State of Utah ss
County of Tooele

On the 1st day of April, 2009, personally appeared before me Colleen S. Johnson and Marilyn K. Gillette, the signers of the within instrument, who duly acknowledged to me that they executed the same with full authority to do so as Tooele County.

Residing At: Tooele County
Michelle L. Pruden
A Notary Public commissioned in Utah

Commission Expires: 5/11/2011
Michelle L. Pruden
Print Name

BOUNDARY DESCRIPTION

A part of Section 1, Township 3 South, Range 5 West, Salt Lake Base and Meridian, Beginning at a point 772.12 feet South 0°22'03" East along the Section line and 2583.43 feet North 84°23'36" West from the Northeast corner of said Section 1; and running thence South 0°19'32" East 941.77 feet; thence South 89°40'28" West 60.00 feet; thence South 0°19'32" East 486.68 feet; thence South 89°40'28" West 1104.87 feet; thence South 0°19'32" East 1065.00 feet; thence South 89°40'28" West 648.63 feet; thence South 0°19'32" East 440.50 feet; thence South 89°40'28" West 829.78 feet; thence Northwesterly along the arc of a 25.00 foot radius curve to the right a distance of 39.12 feet (Long Chord bears North 45°29'42" West 35.25 feet) to the East right-of-way line of Sheep Lane; thence two (2) courses along said East right-of-way as follows: North 0°39'53" West 767.62 feet and North 0°39'55" West 2420.74 feet; thence South 84°23'36" East 2701.65 feet to the point of beginning.

Contains 141.410 Acres

Vicinity Map

Not to Scale

Final Plat for
Miller Motorsports Business Park PUD No. 1
A part of Section 1, Township 3 South, Range 5 West, Salt Lake Base & Meridian, Tooele County, Utah

GREAT BASIN ENGINEERING NORTH
CONSULTING ENGINEERS AND SURVEYORS
5746 South 1475 East - Suite 200
Ogden, Utah 84403
P.O. Box 150048, Ogden, Utah 84415
Ogden (801)394-8515 Salt Lake City (801)321-0222 Fax (801)392-7944

TOOELE COUNTY RECORDER
RECORDED NO. 324129
STATE OF UTAH, COUNTY OF TOOELE, RECORDED AND FILED AT THE REQUEST OF [Signature]
DATE 4/1/09 TIME 2:43 pm BOOK 1/4 PAGE 16/18
FEE PAID \$ 39.00
[Signature]
TOOELE COUNTY RECORDER