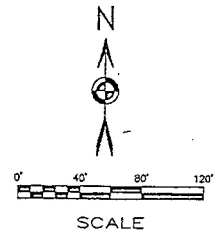
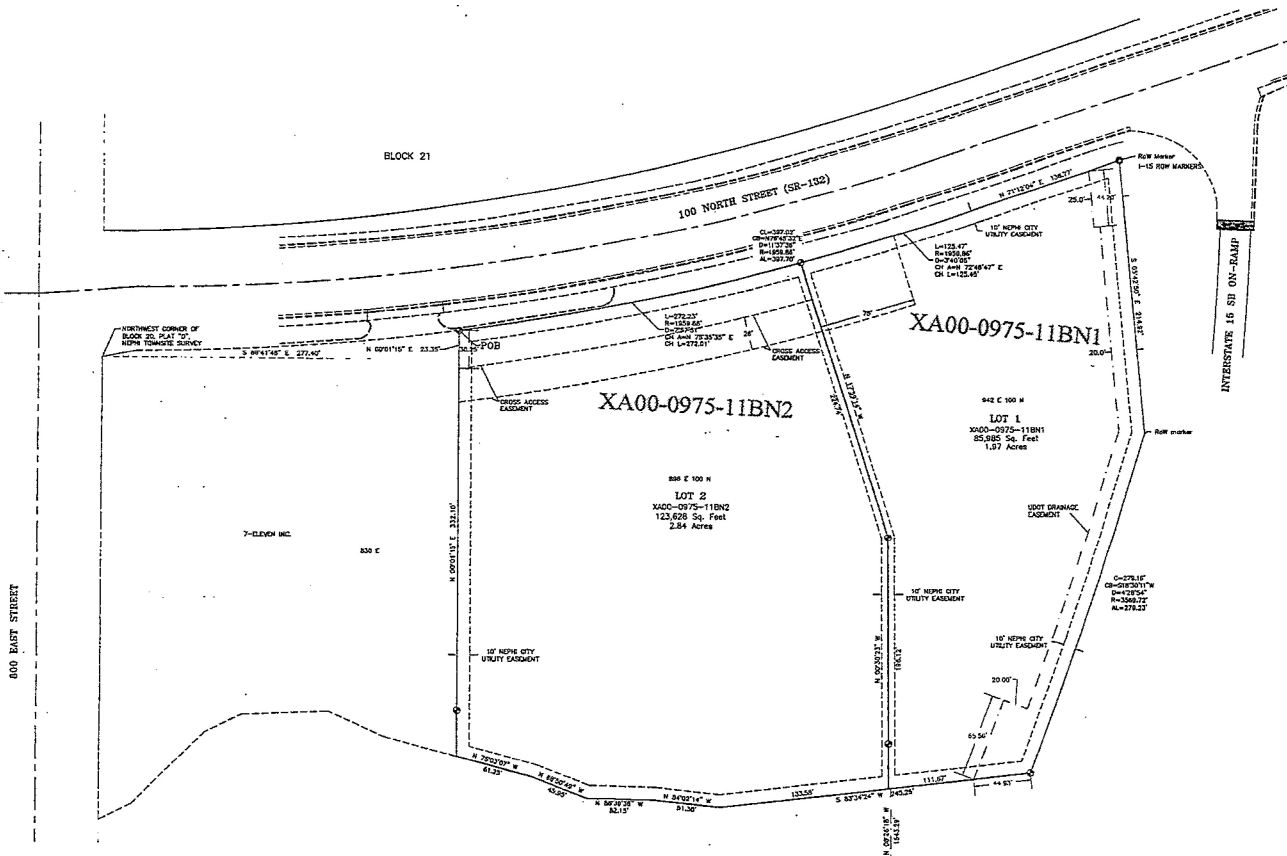


# BARBAROSA NEPHI

A COMMERCIAL SUBDIVISION

# MAP NO. 432



This plat is a reference only and no liability is assumed for accuracy or variations with an actual survey.

- LEGEND
- △ = CALCULATED POINT
  - ⊙ = FOUND REBAR
  - ⊕ = SET 5/8" REBAR WITH CAP
  - ⊙ = SECTION CORNER
  - ⬆ = LAND OWNER DEED DESCRIPTION LINE
  - = SECTION LINE
  - = DESCRIBED BOUNDARY
  - XXXX N = ADDRESS

MAP NO. 432  
 Entry No. 311422 Book 625 Page 1530  
 Debra P. Zirbes, Juab County Recorder  
 October 24, 2022 09:42:25 A.M. Fee \$54.00  
 By: Nephi City, A municipal corporation