

250534

**POWERLINE ANCHOR EASEMENT**

WHEREAS, **DEVELOPING LAND COMPANY**, a Washington Corporation, referred to herein as "Grantor", is the owner of the following described tract of land situated in the County of Davis, State of Utah, to-wit:

Beginning at a point 22.91 ft. South and 305.81 ft. East from the Southwest corner of Sec. 30, T. 2 N., R. 1 E., S.L.B. & M., to the principal point of beginning, and running thence N. 89° 55' 15" E. 488.17 ft. to a point on the West line of South Main Street;

Thence N. 31° 11' 30" E. 702.40 ft. to a point along the West line of said street; thence N. 88° 18' 40" E. 9.93 ft. to a point; thence N. 31° 11' 30" E. 792.89 ft. along the West line of said street to a point on the South line of 1500 South Street;

Thence S. 89° 46' W. 624.84 ft. along the South line of 1500 South Street to a point; thence S. 26° 50' 45" W. 786.93 ft. to a point;

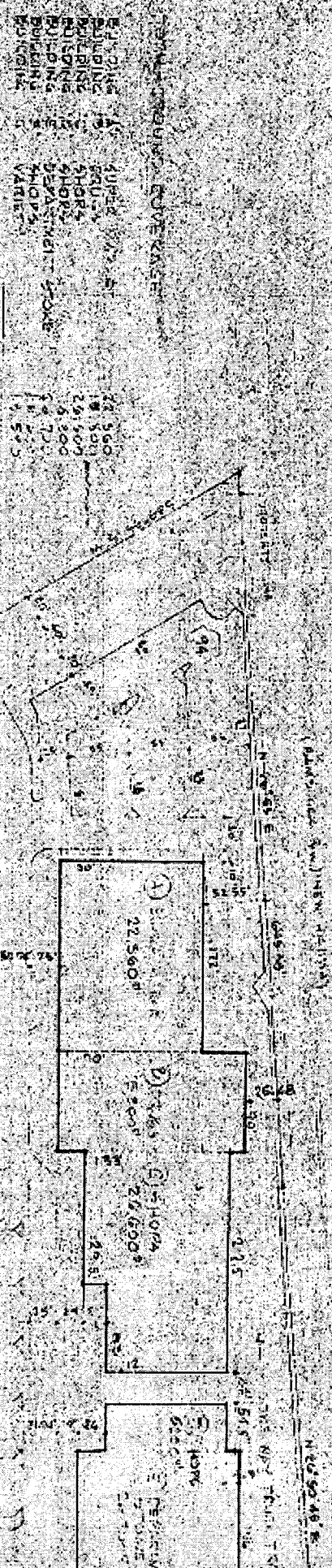
Thence S. 26° 55' W. 645.38 ft. to the principal point of beginning.

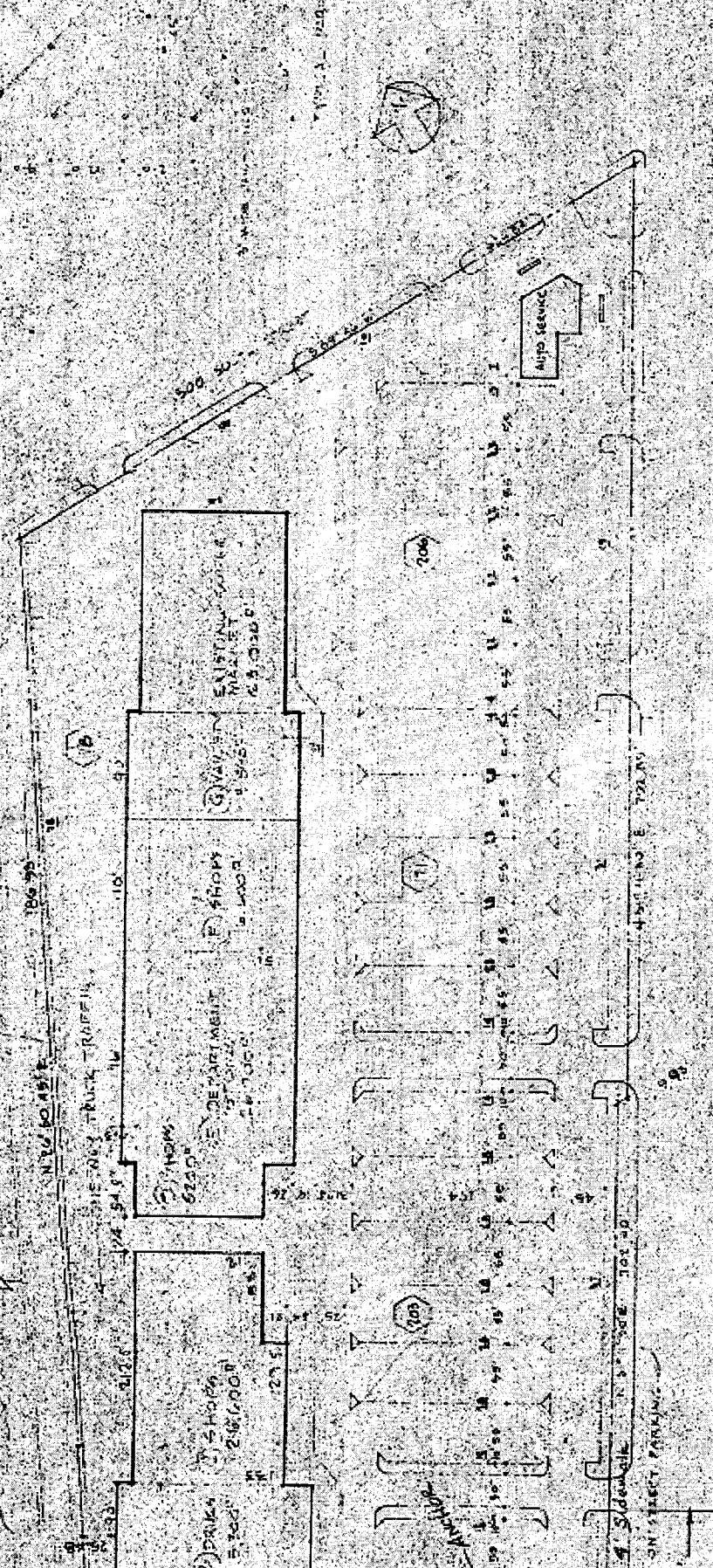
WHEREAS, the **CITY OF BOUNTIFUL**, a municipal corporation of the State of Utah, referred to herein as "Grantee", desires an easement to install an anchor for its power transmission line, which anchor will extend west eleven and seven-tenths feet upon the above described tract of land from a point on the easterly line of said tract of land 208' more or less, northeasterly from the southeasterly corner of said tract of land, which point is also 132' more or less, southwesterly from an established driveway into said property.

NOW, THEREFORE, for valuable consideration received by the Grantor, the adequacy of which is hereby acknowledged, the Grantor does hereby grant and extend to the Grantee an easement to construct and maintain an anchor for said power transmission line at the location in the above described tract of land, specifically described above; together with rights and privileges necessary or convenient for the installation, maintenance and use of said power transmission line anchor, including the right of ingress and egress over the

☒ Abstracted  
☐ Indexed  
☐ Filed  
☐ Platted  
☐ On Margin  
☐ Compared

三三三

[illegible]



JOHN GRAHAM AND COMPANY  
 ARCHITECTS AND ENGINEERS  
 1000 10th Ave. N.W.  
 DATE AUG 7, 1962  
 REV. 3-15-63 OK  
 REV. 10-24-63  
 REV. 8-15-62

SCALE 1" = 100.0'