

Int 248227 W 456 P 92
Date: 28-JUN-2012 4:17:43PM
Fee: \$25.00 Cash
Filed By: CP
BRUCE BROWN, Recorder
BEAVER COUNTY CORPORATION
For: BLUE MOUNTAIN BIOGAS

When recorded return to:
Blue Mountain Biogas LLC
86 N University Ave, Suite 400
Provo, Utah 84601

RIGHT OF WAY EASEMENTS

For value received, **Murphy Brown, LLC** ("Grantor"), hereby grants to Blue Mountain Biogas, LLC its successors and assigns, ("Grantee"), an easement for a right of way **15' or 50 (as noted)** feet in width, for the construction, reconstruction, operation, maintenance, repair, replacement, enlargement, and removal of pipes, structures, vaults, electric power transmission, distribution and communication lines and all necessary or desirable accessories and appurtenances thereto, along the general course now located by Grantee on, over, or under the surface of the real property of Grantor in **Beaver County, State of Utah** more particularly described as follows and as more particularly described and/or shown on Exhibit(s) **Exhibit A** attached hereto and by this reference made a part hereof:

Legal Description:

See attached Easement Descriptions Exhibit

Assessor Parcel No's 2-142-3, 2-144-1, 2-144-6, 2-145-1, 2-145-2, 2-145-3, 2-147-3

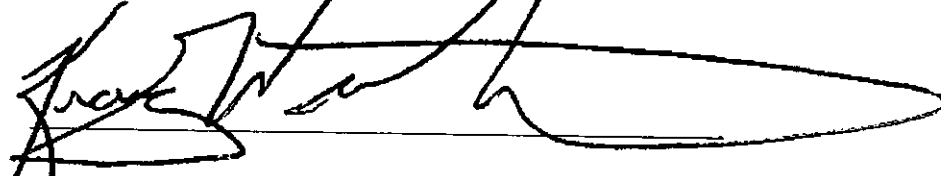
Together with the right of access to the right of way from adjacent lands of Grantor for all activities in connection with the purposes for which this easement has been granted

Subject to the foregoing limitations, the right of way may be used by Grantor for other purposes not inconsistent, as determined by Grantee, with the purposes for which this easement has been granted.

The rights and obligations of the parties hereto shall be binding upon and shall benefit their respective heirs, successors and assigns.

Dated this 28th day of June, 2012

By:



Name:

Craig Westerbeeck

Title:

AVP, EHS

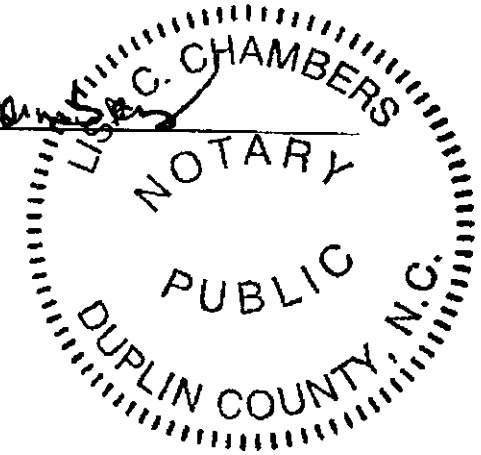
REPRESENTATIVE ACKNOWLEDGEMENT

State of North Carolina
County of Duplin } SS.

This instrument was acknowledged before me on this 28 day of June 2012
Kraig Westerbeek, by AVP, EHS, as
Name of Representative Title of Representative

Of Murphy Brown, LLC.
Name of Entity on behalf of whom instrument was executed

Lisa C Chambers
Notary Public



EASEMENT DESCRIPTIONS EXHIBIT

50' WIDE UTILITY EASEMENTS BEING 25 FEET ON EACH SIDE OF THE FOLLOWING DESCRIBED CENTERLINES:

SITE 1

BEGINNING AT A POINT S 00°02'08" E ALONG THE SECTION LINE 1551.2 FEET AND N 90°00' E 768.6 FEET FROM THE NW CORNER OF SECTION 22, T30S, R13W, SLB & M AND RUNNING THENCE N 90°00' E 586.1 FEET TO POINT "A" BEING THE CENTER OF AN OVERFLOW STRUCTURE; THENCE FROM POINT "A", A LINE RUNS S 00°00' E 26.5 FEET, THENCE S 45°00' W 36.0 FEET, THENCE S 90°00' W 72.1 FEET; THENCE FROM POINT "A" A LINE RUNNING N 90°00' E 33.0 FEET; THENCE S 45°00' E 82.3 FEET; THENCE N 90°00' E 239.8 FEET; THENCE S 45°00' E 1337.4 FEET; THENCE S 00°03' E 1698.3 FEET; THENCE S 45°00' W 28.3 FEET; THENCE S 00°00' E 54.7 FEET; THENCE S 45°00' E 21.1 FEET; THENCE S 00°03' E 1779.6 FEET TO THE NORTH LINE OF THE ALPENTAL LEASE PARCEL AND THE POINT OF ENDING. EXCEPTING THEREFROM THAT PORTION WITHIN THE EAST ½ OF SAID SECTION 22.

SITES 2-3

BEGINNING AT A POINT N 00°02'08" W ALONG THE SECTION LINE 893.4 FEET AND N 90°00' E 761.5 FEET FROM THE SW CORNER OF SECTION 22, T30S, R13W, SLB & M AND RUNNING THENCE N 45°00' E 94.3 FEET; THENCE N 00°00' E 21.0 FEET TO POINT "B" BEING THE CENTER OF AN OVERFLOW STRUCTURE; THENCE FROM POINT "B", A LINE RUNS N 45°00' W 94.6 FEET; THENCE FROM POINT "B" RUNNING N 90°00' E 1088.4 FEET TO POINT "C" BEING THE CENTER OF AN OVERFLOW STRUCTURE; THENCE FROM POINT "C" A LINE RUNS S 00°00' E 18.9 FEET, THENCE S 44°44' W 98.1 FEET; THENCE FROM POINT "C" RUNNING N 90°00' E 694.6 FEET TO THE CENTER OF A TRANSFER PIT STRUCTURE AND POINT OF ENDING.

SITE 4

BEGINNING AT A POINT S 00°03'27" E ALONG THE SECTION LINE 962.6 FEET AND N 90°00' E 756.3 FEET FROM THE NW CORNER OF SECTION 27, T30S, R13W, SLB & M AND RUNNING THENCE S 89°11' E 491.7 FEET; THENCE S 45°00' E 34.9 FEET; THENCE N 90°00' E 57.6 FEET TO POINT "D", BEING THE CENTER OF A TRANSFER STRUCTURE; FROM POINT "D" A LINE RUNS S 00°00' W 11.5 FEET, THENCE S 45°00' W 89.6 FEET; THENCE FROM POINT "D" RUNNING N 90°00' E 80.3 FEET; THENCE S 29°22' E 33.4 FEET; THENCE N 90°00' E 320.6 FEET; THENCE N 45°00' E 40.3 FEET; THENCE N 90°00' E 333.1 FEET TO THE WEST LINE OF THE ALPENTAL LEASE PARCEL AND THE POINT OF ENDING.

SITES 5-6-7-8

BEGINNING AT A POINT S 00°03'21" E ALONG THE SECTION LINE 2201.4 FEET AND N 90°00' E 1394.0 FEET FROM THE NW CORNER OF SECTION 23, T30S, R13W, SLB & M AND RUNNING THENCE S 89°36'21" E 823.7 FEET TO POINT "E", BEING THE CENTER OF A DIVERSION BOX STRUCTURE; FROM POINT "E", A LINE RUNS N 90°00' E 1065.2 FEET; THENCE FROM POINT "E" RUNNING S 00°01'50" E 1466.4 FEET; THENCE S 53°10' W 2740.4 FEET; THENCE N 90°00' W 51.7 FEET; THENCE S 68°08'31" W 2306.3 FEET TO THE EAST LINE OF THE ALPENTAL LEASE PARCEL AND THE POINT OF ENDING.

SITES 15-16

BEGINNING AT A POINT S 00°03'40" E ALONG THE SECTION LINE 685.3 FEET AND N 90°00' E 756.9 FEET FROM THE NW CORNER OF SECTION 34, T30S, R13W, SLB & M AND RUNNING THENCE N 90°00' E 132.3 FEET TO POINT "F"; THENCE FROM POINT "F" A LINE RUNS N 44°09' W 177.4 FEET; THENCE FROM POINT "F" RUNNING S 89°09' E 859.7 FEET; THENCE N 79°47' E 403.7 FEET TO POINT "G", BEING THE CENTER OF A TRANSFER PIT STRUCTURE; THENCE FROM POINT "G", A LINE RUNS S 00°00' E 28.3 FEET, THENCE S 45°10" W 111.0 FEET; THENCE FROM POINT "G", RUNNING N 00°01'44" W 3395.4 FEET; THENCE N 45°00' E 934.8 FEET TO THE POINT OF ENDING AT THE SOUTH LINE OF THE ALPENTAL LEASE PARCEL.

15' WIDE UTILITY EASEMENTS BEING 7.5' WIDE ON EACH SIDE OF THE FOLLOWING DESCRIBED CENTERLINES:

SITE 6 FIBER LINE

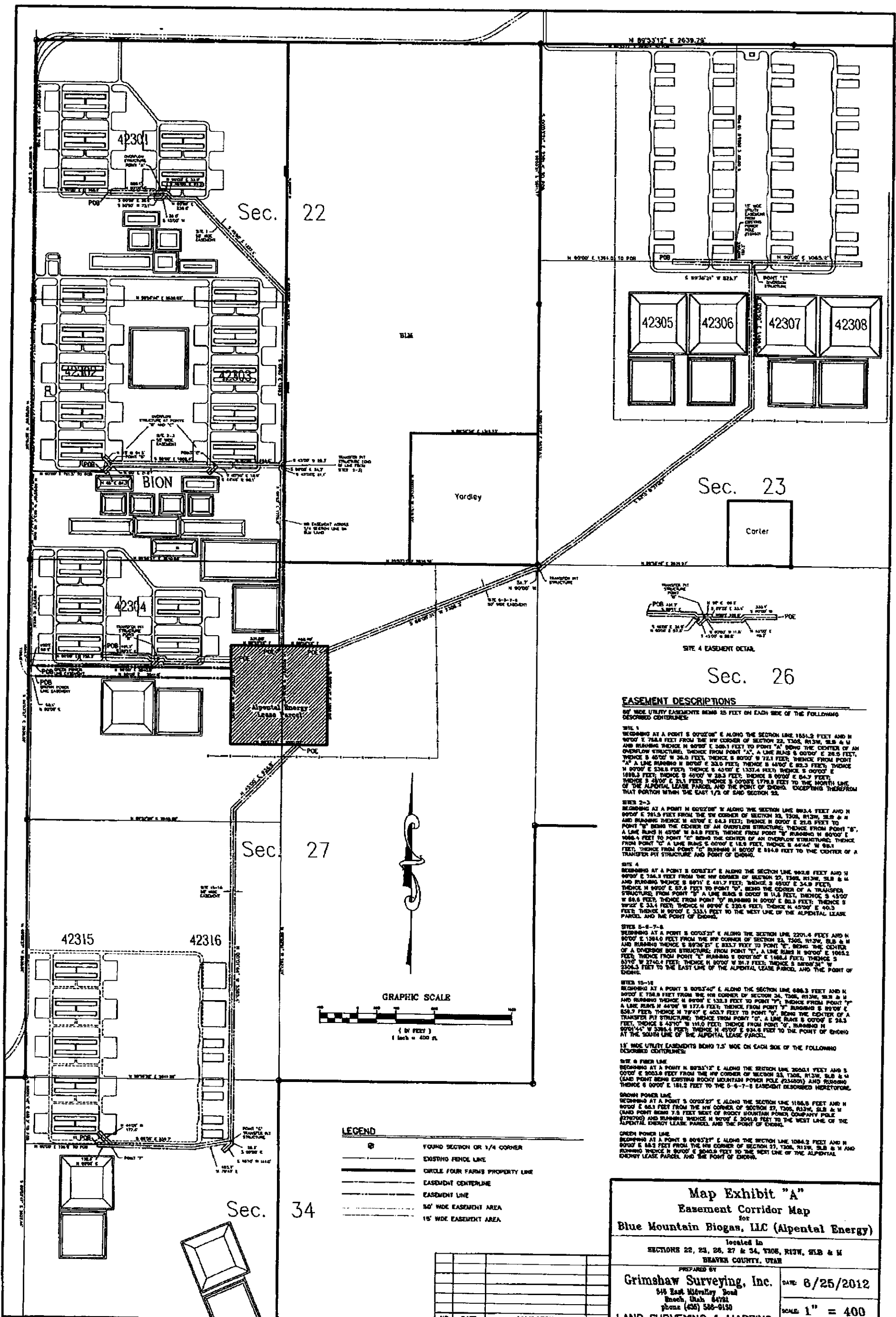
BEGINNING AT A POINT N 89°53'12" E ALONG THE SECTION LINE 2050.1 FEET AND S 00°00' E 2003.8 FEET FROM THE NW CORNER OF SECTION 23, T30S, R13W, SLB & M (SAID POINT BEING EXISTING ROCKY MOUNTAIN POWER POLE #234601) AND RUNNING THENCE S 00°00' E 181.2 FEET TO THE 5-6-7-8 EASEMENT DESCRIBED HERETOFORE.

BROWN POWER LINE

BEGINNING AT A POINT S 00°03'27" E ALONG THE SECTION LINE 1188.6 FEET AND N 90°00' E 68.1 FEET FROM THE NW CORNER OF SECTION 27, T30S, R13W, SLB & M (SAID POINT BEING 7.5 FEET WEST OF ROCKY MOUNTAIN POWER COMPANY POLE #270700) AND RUNNING THENCE N 90°00' E 2041.0 FEET TO THE WEST LINE OF THE ALPENTAL ENERGY LEASE PARCEL AND THE POINT OF ENDING.

GREEN POWER LINE

BEGINNING AT A POINT S 00°03'27" E ALONG THE SECTION LINE 1084.2 FEET AND N 90°00' E 68.2 FEET FROM THE NW CORNER OF SECTION 27, T30S, R13W, SLB & M AND RUNNING THENCE N 90°00' E 2040.9 FEET TO THE WEST LINE OF THE ALPENTAL ENERGY LEASE PARCEL AND THE POINT OF ENDING.



EASEMENT DESCRIPTIONS

8' WIDE UTILITY EASEMENTS BEING 25 FEET ON EACH SIDE OF THE FOLLOWING DESCRIBED CENTERLINES:

SITE 1
 BEGINNING AT A POINT S 00°02'00" E ALONG THE SECTION LINE 1551.2 FEET AND N 89°02'00" E 78.8 FEET FROM THE NW CORNER OF SECTION 22, T30S, R13W, S1B & M AND RUNNING THENCE N 89°02'00" E 20.1 FEET TO POINT "A", BEING THE CENTER OF AN OVERFLOW STRUCTURE, THENCE FROM POINT "A", A LINE BEARS S 00°02'00" E 28.5 FEET, THENCE S 85°00'00" W 24.0 FEET, THENCE S 80°00'00" W 72.1 FEET, THENCE FROM POINT "A" A LINE BEARING N 89°02'00" E 20.1 FEET, THENCE S 45°00'00" E 82.3 FEET, THENCE N 89°02'00" E 20.1 FEET, THENCE S 45°00'00" E 1337.4 FEET, THENCE S 00°02'00" E 1089.3 FEET, THENCE S 45°00'00" W 28.3 FEET, THENCE S 00°02'00" E 64.7 FEET, THENCE S 45°00'00" W 28.3 FEET, THENCE S 00°02'00" E 179.8 FEET TO THE NORTH LINE OF THE ALPENTAL LEASE PARCEL, AND THE POINT OF BEGINNING, EXCEPT THEREFROM THAT PORTION WITHIN THE EAST 1/2 OF SAID SECTION 22.

SITES 2-3
 BEGINNING AT A POINT N 00°02'00" E ALONG THE SECTION LINE 892.4 FEET AND N 89°02'00" E 78.8 FEET FROM THE SW CORNER OF SECTION 22, T30S, R13W, S1B & M AND RUNNING THENCE N 89°02'00" E 64.3 FEET, THENCE N 00°02'00" E 23.0 FEET TO POINT "B", BEING THE CENTER OF AN OVERFLOW STRUCTURE, THENCE FROM POINT "B", A LINE BEARS N 89°02'00" E 23.0 FEET, THENCE FROM POINT "B" RUNNING N 89°02'00" E 1088.4 FEET TO POINT "C", BEING THE CENTER OF AN OVERFLOW STRUCTURE, THENCE FROM POINT "C" A LINE BEARS S 00°02'00" E 11.6 FEET, THENCE S 45°00'00" E 11.6 FEET, THENCE N 89°02'00" E 11.6 FEET, THENCE S 45°00'00" E 11.6 FEET, THENCE N 89°02'00" E 230.4 FEET, THENCE N 45°00'00" E 40.3 FEET, THENCE N 89°02'00" E 311.1 FEET TO THE WEST LINE OF THE ALPENTAL LEASE PARCEL, AND THE POINT OF BEGINNING.

SITE 4
 BEGINNING AT A POINT S 00°02'00" E ALONG THE SECTION LINE 892.4 FEET AND N 89°02'00" E 78.8 FEET FROM THE NW CORNER OF SECTION 22, T30S, R13W, S1B & M AND RUNNING THENCE N 89°02'00" E 64.3 FEET, THENCE N 00°02'00" E 23.0 FEET TO POINT "D", BEING THE CENTER OF A TRANSFER PIT STRUCTURE, THENCE FROM POINT "D" A LINE BEARS S 00°02'00" E 11.6 FEET, THENCE S 45°00'00" E 11.6 FEET, THENCE N 89°02'00" E 11.6 FEET, THENCE S 45°00'00" E 11.6 FEET, THENCE N 89°02'00" E 230.4 FEET, THENCE N 45°00'00" E 40.3 FEET, THENCE N 89°02'00" E 311.1 FEET TO THE WEST LINE OF THE ALPENTAL LEASE PARCEL, AND THE POINT OF BEGINNING.

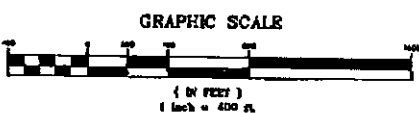
SITES 5-6-7-8
 BEGINNING AT A POINT S 00°02'00" E ALONG THE SECTION LINE 2201.4 FEET AND N 89°02'00" E 1384.0 FEET FROM THE NW CORNER OF SECTION 22, T30S, R13W, S1B & M AND RUNNING THENCE S 89°02'00" E 231.7 FEET TO POINT "E", BEING THE CENTER OF A TRANSFER PIT STRUCTURE, THENCE FROM POINT "E", A LINE BEARS N 89°02'00" E 1065.2 FEET, THENCE FROM POINT "E" RUNNING N 89°02'00" E 1065.2 FEET, THENCE S 45°00'00" W 274.4 FEET, THENCE N 89°02'00" E 274.4 FEET, THENCE S 45°00'00" W 274.4 FEET, THENCE N 89°02'00" E 274.4 FEET, THENCE S 45°00'00" W 274.4 FEET TO THE EAST LINE OF THE ALPENTAL LEASE PARCEL, AND THE POINT OF BEGINNING.

SITES 9-10-11
 BEGINNING AT A POINT S 00°02'00" E ALONG THE SECTION LINE 686.3 FEET AND N 89°02'00" E 78.8 FEET FROM THE NW CORNER OF SECTION 22, T30S, R13W, S1B & M AND RUNNING THENCE N 89°02'00" E 132.3 FEET TO POINT "F", BEING THE CENTER OF A TRANSFER PIT STRUCTURE, THENCE FROM POINT "F" A LINE BEARS N 89°02'00" E 177.4 FEET, THENCE FROM POINT "F" RUNNING S 89°02'00" E 152.9 FEET, THENCE N 89°02'00" E 403.7 FEET TO POINT "G", BEING THE CENTER OF A TRANSFER PIT STRUCTURE, THENCE FROM POINT "G", A LINE BEARS S 00°02'00" E 24.3 FEET, THENCE S 45°00'00" W 111.0 FEET, THENCE FROM POINT "G", RUNNING N 89°02'00" E 111.0 FEET TO POINT "H", BEING THE CENTER OF A TRANSFER PIT STRUCTURE, THENCE FROM POINT "H", A LINE BEARS S 00°02'00" E 24.3 FEET, THENCE S 45°00'00" W 111.0 FEET, THENCE FROM POINT "H", RUNNING N 89°02'00" E 111.0 FEET TO THE SOUTH LINE OF THE ALPENTAL LEASE PARCEL, AND THE POINT OF BEGINNING.

15' WIDE UTILITY EASEMENTS BEING 7.5' WIDE ON EACH SIDE OF THE FOLLOWING DESCRIBED CENTERLINES:

SITE 12 POWER LINE
 BEGINNING AT A POINT N 89°15'12" E ALONG THE SECTION LINE 2005.1 FEET AND S 00°02'00" E 2005.1 FEET FROM THE NW CORNER OF SECTION 22, T30S, R13W, S1B & M (Said Point BEING EXISTING ROCKY MOUNTAIN POWER POLE #232400) AND RUNNING THENCE S 00°02'00" E 181.3 FEET TO THE S-4-7-8 EASEMENT DESCRIBED HERETOFORE.

GREEN POWER LINE
 BEGINNING AT A POINT S 00°02'00" E ALONG THE SECTION LINE 1186.8 FEET AND N 89°02'00" E 84.3 FEET FROM THE NW CORNER OF SECTION 22, T30S, R13W, S1B & M (Said Point BEING EXISTING ROCKY MOUNTAIN POWER POLE #232400) AND RUNNING THENCE N 89°02'00" E 2041.6 FEET TO THE WEST LINE OF THE ALPENTAL LEASE PARCEL, AND THE POINT OF BEGINNING.



- LEGEND**
- ⊙ FOUND SECTION OR 1/4 CORNER
 - EXISTING FENCE LINE
 - CIRCLE FOUR FARMS PROPERTY LINE
 - EASEMENT CENTERLINE
 - EASEMENT LINE
 - 50' WIDE EASEMENT AREA
 - 15' WIDE EASEMENT AREA

Map Exhibit "A"
 Easement Corridor Map
 for
Blue Mountain Biogas, LLC (Alpental Energy)
 located in
 SECTIONS 22, 23, 26, 27 & 34, T30S, R13W, S1B & M
 BEAVER COUNTY, UTAH

PREPARED BY
Grimshaw Surveying, Inc.
 518 East Midway Road
 Breech, Utah 84701
 phone (435) 588-0130

DATE 6/25/2012
 SCALE 1" = 400'

LAND SURVEYING & MAPPING

NO.	DATE	DESCRIPTION	BY