

Boyer Twelfth Street Subdivision

A part of the East Half of Section 24,
T6N, R2W, SLB&M, U.S. Survey
Marriott-Slaterville City, Weber County, Utah

NARRATIVE:

This survey and subdivision plat were requested by The Boyer Company for the purpose of subdividing three (3) commercial lots. ~~Where~~ **Where** ~~Corner~~ **Corner** monuments were found at the intersection of 12th Street and 1200 West Street and approximately 30 feet West of the intersection of 12th Street and 760 West. A line bearing S 89°58'31" E between the two monuments was used as the Basis of Bearings. Lot Corners were monumented as depicted on this plat.

MARRIOTT-SLATERVILLE CITY ATTORNEY

I have examined the financial guarantee and other documents associated with this subdivision plat and in my opinion they conform with the City Ordinance applicable thereto and now in force and effect.

Signed this 7th day of July, 2009.
[Signature]
Signature

MARRIOTT-SLATERVILLE CITY PLANNING COMMISSION APPROVAL

This is to certify that this subdivision plat was duly approved by the Marriott-Slaterville City Planning Commission on the 18th day of June, 2009.
[Signature]
Chair, Marriott-Slaterville City Planning Commission

MARRIOTT-SLATERVILLE CITY COUNCIL ACCEPTANCE

This is to certify that this subdivision plat, the dedication of streets and other public ways and financial guarantee of public improvements associated with this subdivision, thereon are hereby approved and accepted by the Marriott-Slaterville City Council on the 16th day of July, 2009.
[Signature]
Chair, Marriott-Slaterville City Council

MARRIOTT-SLATERVILLE CITY ENGINEER

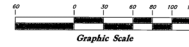
I hereby certify that I have examined this plat and find it to be correct and in accordance with information on file in this office.
Signed this 16th day of June, 2009.
[Signature]
Signature

Legend

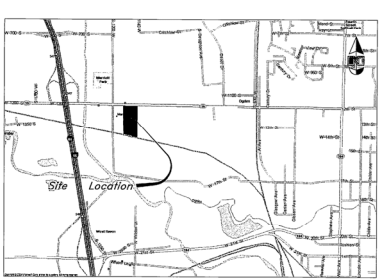
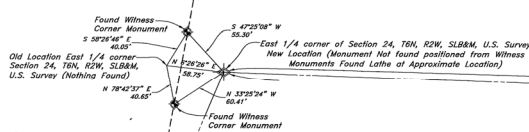
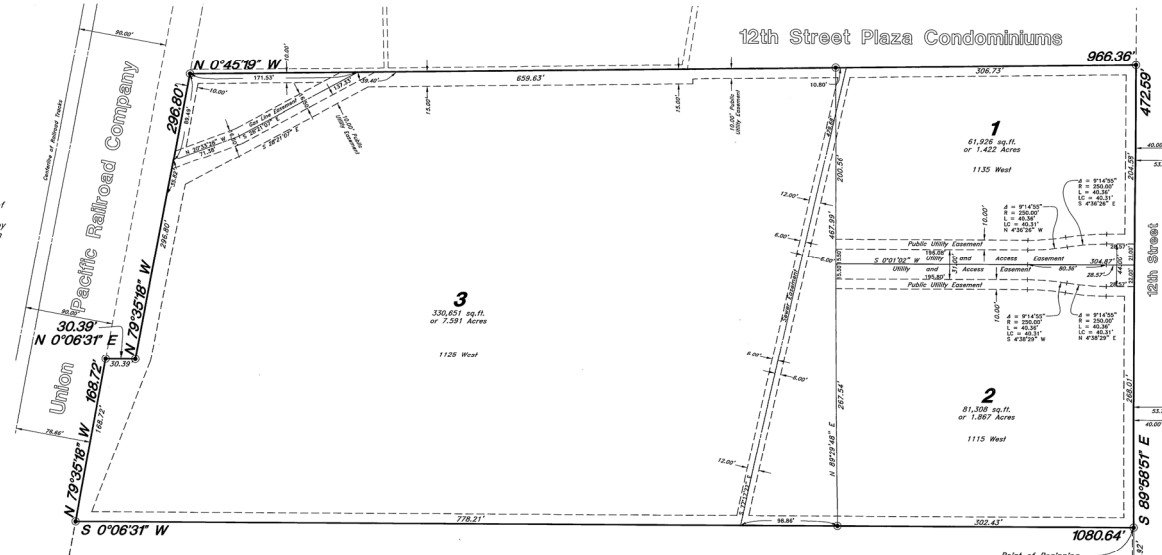
- Const. Light Pole
- Set 5/8" Rebar (24" long) & cap w/ Fencepost
- Set Hub & Tack
- ⊙ Monument to be set
- (Rad.) Radial line
- (N/R) Non-Radial line
- (D.C.S.) **Boyer** County Surveyor



Scale 1" = 60'



Found **Boyer** County Monument of the Intersection of 12th Street and 1200 West Street



NOTE:
10' wide Utility and Drainage Easements each side of property line as indicated by dashed lines, except as otherwise shown.

GREAT BASIN ENGINEERING NORTH
CONSULTING ENGINEERS AND SURVEYORS
5748 South 1475 East - Suite 200
Ogden, Utah 84403
P.O. Box 150046, Ogden, Utah 84415
Phone (801) 462-0222 Fax (801) 462-0222

SURVEYOR'S CERTIFICATE

I, Andy Hubbard, a Registered Professional Land Surveyor in the State of Utah, do hereby certify that this plat of Boyer Twelfth Street Subdivision in Marriott-Slaterville City, Weber County, Utah has been correctly drawn to the designated scale and is a true and correct representation of the following description of lands included in said subdivision, based on data compiled from records in the Weber County Recorder's Office, and of a survey made on the ground.
Signed this 16th day of June



BOUNDARY DESCRIPTION

A part of the East Half of Section 24, Township 6 North, Range 2 West, Salt Lake Base and Meridian, U.S. Survey:
Beginning at the Northwest corner of IFA Country Store Subdivision in Marriott-Slaterville City, Weber County, said point is also on the South right-of-way line of 12th Street, said point being 1059.58 feet North 1°34'21" East along the Section line and 156.92 feet North 89°58'31" West along said South right-of-way line from the East Quarter corner of said Section; and running thence South 0°06'31" West 1080.64 feet along the West boundary line of said IFA Country Store Subdivision to the Northernly right-of-way line of the Union Pacific Railroad; thence North 79°35'18" West 168.72 feet along said Northernly right-of-way line; thence North 0°06'31" East 30.39 feet; thence North 79°35'18" West 296.80 feet to the East boundary line extended of Twelfth Street Condominium, a subdivision in Marriott-Slaterville City, Weber County, Utah; thence North 0°45'19" West 266.36 feet along said East boundary line extended and the East boundary line of said Twelfth Street Plaza Condominiums on the East boundary line of Twelfth Street Plaza Subdivision, in Marriott-Slaterville, Weber County, Utah to said South right-of-way line; thence South 89°58'31" East 472.59 feet along said South right-of-way line to the point of beginning.
Contains 10.879 Acres

OWNER'S DEDICATION

We, the undersigned owners of the hereon described tract of land, hereby set apart and subdivide the same into lots and streets as shown on this plat, and name said tract Boyer Twelfth Street Subdivision, and hereby dedicate, grant and convey to Marriott-Slaterville City, Weber County, Utah, all those parts or portions of said tract of land designated as streets, the same to be used as public thoroughfares forever, and also dedicate to Marriott-Slaterville City those certain strips as easements for public utility and drainage purposes as shown hereon, the same to be used for the installation, maintenance, and operation of public utility service lines and drainage, as may be authorized by Marriott-Slaterville City.
Signed this 15th day of July, 2009.

Boyer GSA Warehouse, L.C.
a Utah limited liability company by
BOYER PROJECT COMPANY, L.C., its manager
[Signature]

Steven B. Ostler - Manager of
THE BOYER COMPANY, L.C., THE MANAGER, L.C. of
BOYER PROJECT COMPANY, L.C.
[Signature]

ACKNOWLEDGMENT

State of Utah)
County of Salt Lake) ss
On the 15th day of July, 2009, personally appeared before me, Steven B. Ostler, who being by the duly sworn did say that he is manager, and that said instrument was signed in behalf of said company, by a resolution of its Members, and Steven B. Ostler acknowledged to me that said company
Residing at: Salt Lake City
[Signature]
A Notary Public commission in Utah

Commission Expires: September 11, 2011
Richard N. Nivolsulu
Notary Public



WEBER COUNTY RECORDER
ENTRY NO. 2421157 FEE PAID
30.52 FILED FOR RECORD AND
RECORDED 30 JUL 2009 AT
4:22 PM IN BOOK 20 OF OFFICIAL
RECORDS PAGE 25 RECORDED
FOR Boyer GSA Warehouse L.C.
Ernest D. Rowley
WEBER COUNTY RECORDER
By: *[Signature]*
DEPUTY