

432

Recorded at request of City of Woods Cross Fee Paid \$ No Fee
Date JAN 2 1962 of 3:15 P.M. EMILY T. ELDREDGE Recorder Davis County
By LeAnn Bradley Deputy Book 233 Page 432
EASEMENT

230809

Lot 11, Normandy Park

THIS EASEMENT, granted this 6th day of September, 1961, A.D.,
executed by Frank H. Hayes and Marian M. Hayes, his wife; ~~and xxxxxxxx~~
~~xxxxxxxxxxxxxxxxxxxxxxxxxxxxxxxxxxxxxxxxxxxxxxxxxxxxxxxxxxxxxxxxxxxxxxxx~~ whereby they grant a
perpetual right of ingress and egress, to the Town of Woods Cross,
and over the following described property, to-wit:

Beginning at the Northwest corner of Lot 11, Normandy Park
Subdivision, Bountiful City, County of Davis, State of Utah, and
running thence South 89°19' East 18.73 feet; thence South 32°00'
West 35.29 feet; thence North 0°04' West 13.67 feet; thence South
89°56' West 10.31 feet; thence North 32°00' East 19.44 feet to the
point of beginning.

☒ ☒ ☒
☐ Abstracted
☐ Indexed
☐ Entered
☐ Platted
☐ On file
☐ Compared

TO HAVE AND TO HOLD the same unto the Town of Woods Cross, their
successors and assigns.

Frank H. Hayes
Frank H. Hayes

Marian M. Hayes
Marian M. Hayes

XXXXXXXXXXXXXXXXXXXXXXXXXXXXXXXXXXXXXXXXXXXXXXXXXXXXXXXXXXXXXXXXXXXX
XXXXXXXXXXXXXXXXXXXXXXXXXXXXXXXXXXXXXXXXXXXXXXXXXXXXXXXXXXXXXXXXXXXX
XXXXXXXXXXXXXXXXXXXXXXXXXXXXXXXXXXXXXXXXXXXXXXXXXXXXXXXXXXXXXXXXXXXX

XXXXXXXXXXXXXXXXXXXXXXXXXXXXXXXXXXXXXXXXXXXXXXXXXXXXXXXXXXXXXXXXXXXX
XXXXXXXXXXXXXXXXXXXXXXXXXXXXXXXXXXXXXXXXXXXXXXXXXXXXXXXXXXXXXXXXXXXX

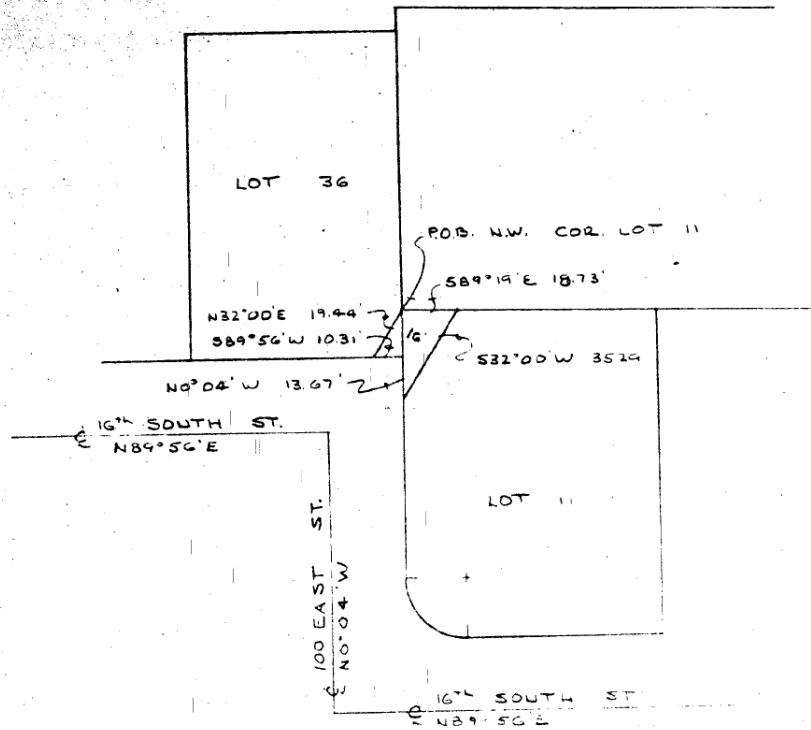
STATE OF UTAH I
County of Davis I ss

On the 6th day of September, 1961, personally appeared before me Frank H.
Hayes and Marian M. Hayes, his wife, ~~and xxxxxxxx~~ ~~xxxxxxxxxxxxxxxxxxxxxxxxxxxxxxxxxxxxxxxxxxxxxxxxxxxxxxxxxxxxxxxxxxxxxxxx~~
~~xxxxxxxxxxxxxxxxxxxxxxxxxxxxxxxxxxxxxxxxxxxxxxxxxxxxxxxxxxxxxxxxxxxxxxxx~~, the signers of the foregoing instrument, who duly
acknowledged to me that they executed the same.

Comm. Expires
April 11, 1963

Merrill L. Black
Notary Public
Res: Bountiful, Utah *at. W. X.*

PROPERTY SURVEY



Woods Cross Easement -

Beg. at the NW Corner of Lot 11, Normandy Park Subdivision, Bountiful City, Davis County, Utah and running thence S 89° 19' E 18.73 ft.; thence S 32° 00' W 35.29 ft.; thence N 0° 04' W 13.67 ft.; thence S 89° 56' W 10.31 ft.; thence N 32° 00' E 19.44 ft. to the Point of Beginning.

Date September 5, 1961

Scale 1" = 50'

Name

Address

Great Basin Mapping & Surveying

Job No. P.D. 61-242
GC