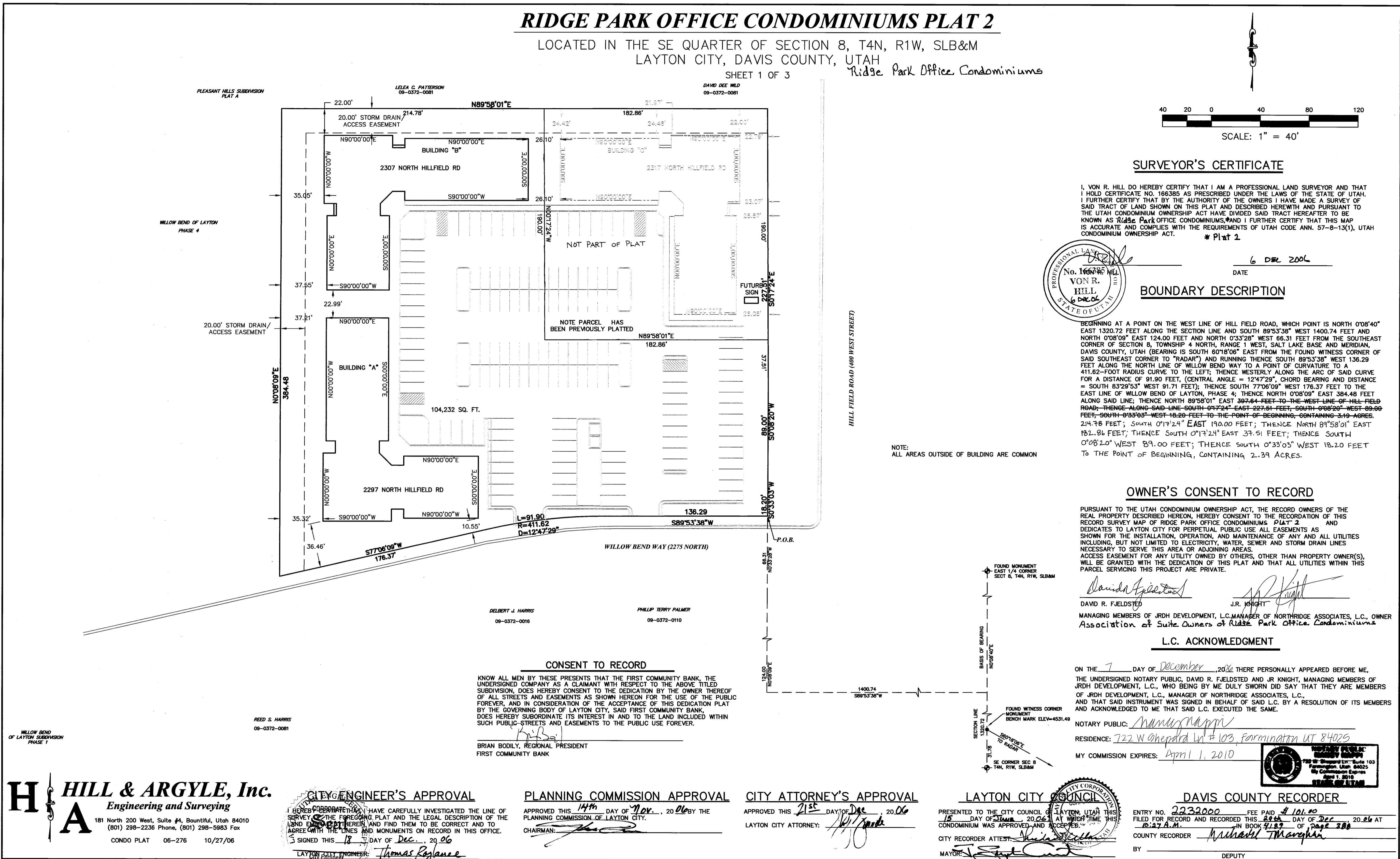


4563-1



1-5224

1-5224

12-7-06

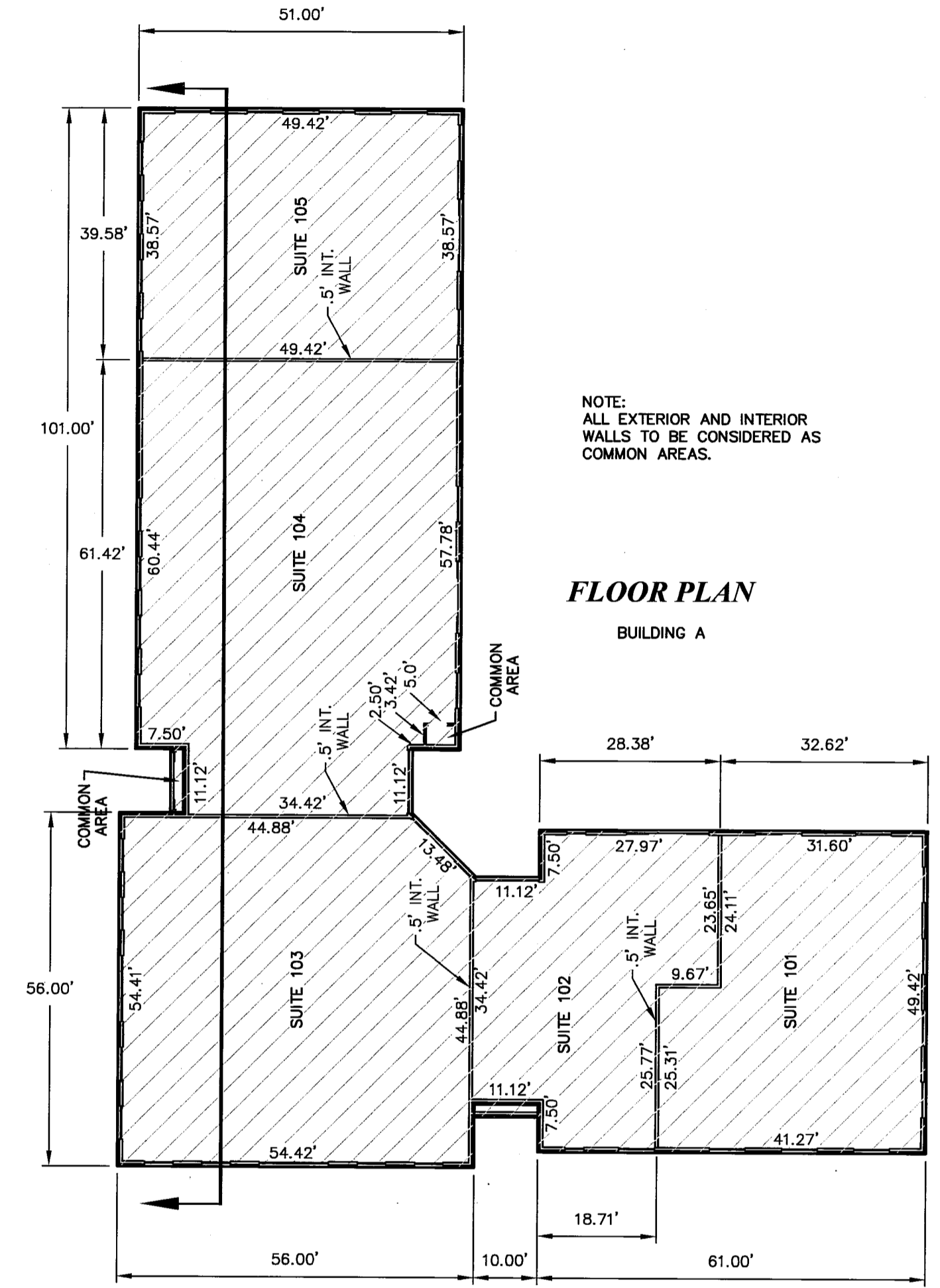
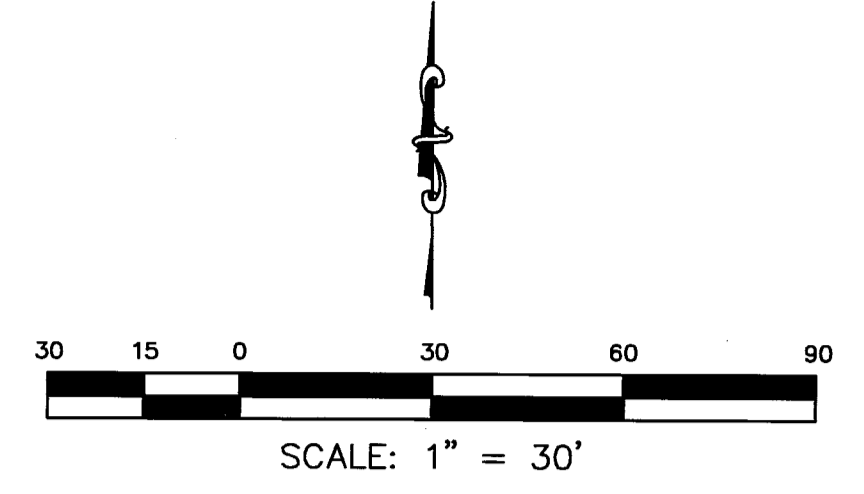
4293-5

4293-5

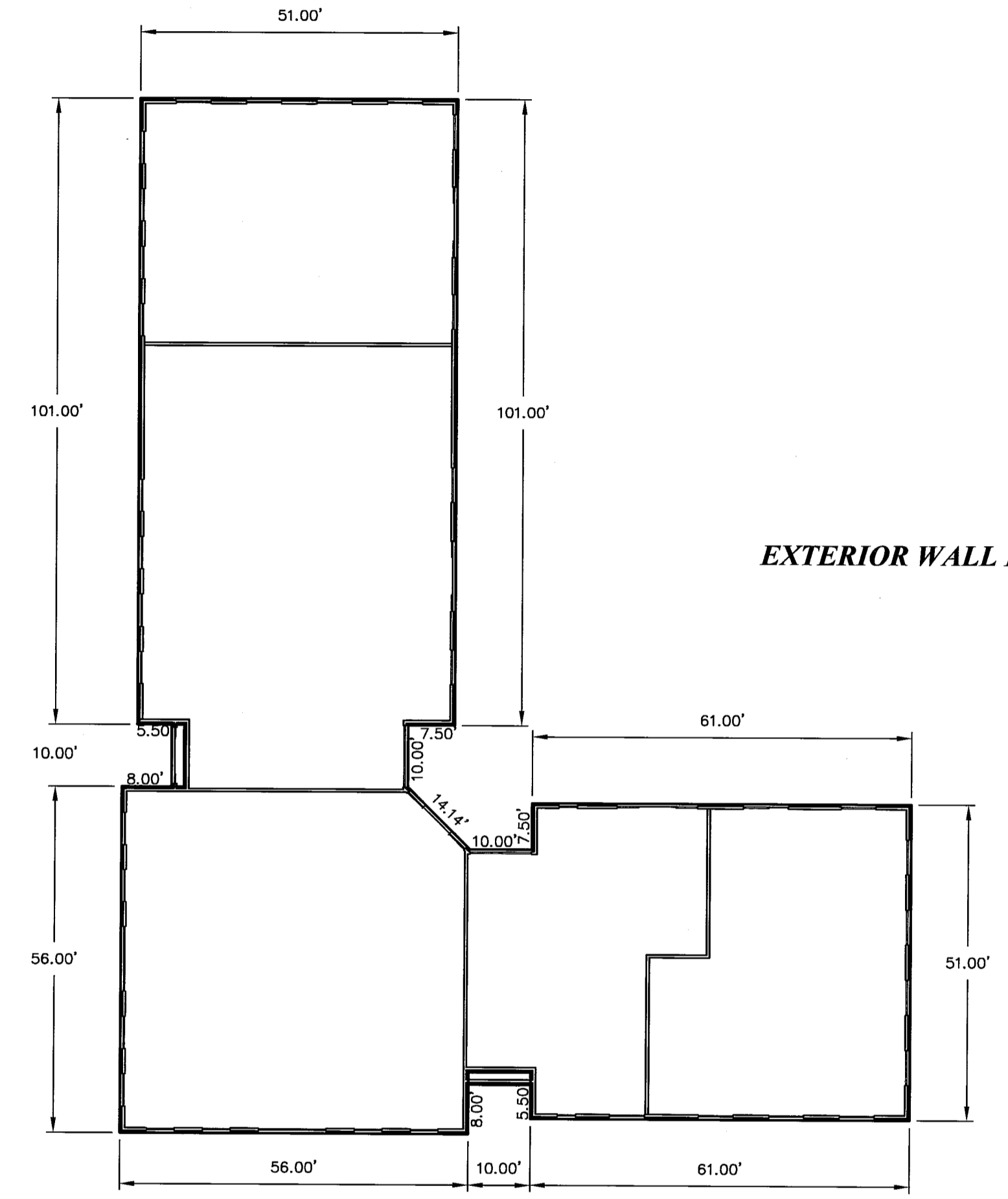
4563-2

RIDGE PARK OFFICE CONDOMINIUMS PLAT 2

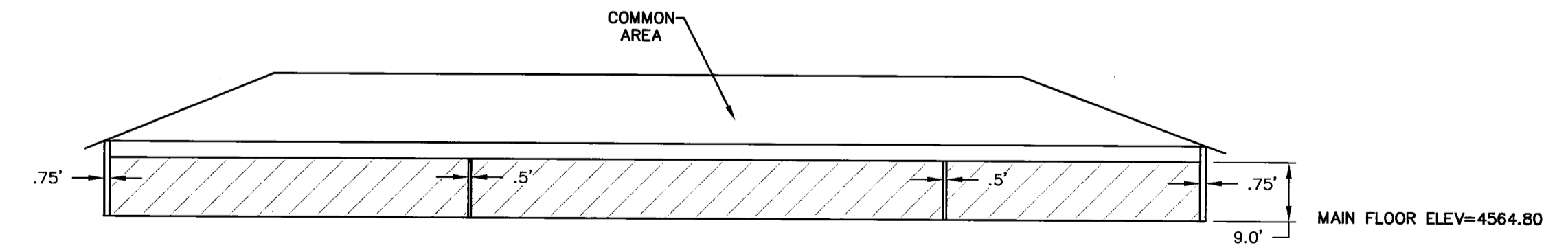
LOCATED IN THE SE QUARTER OF SECTION 8, T4N, R1W, SLB&M
LAYTON CITY, DAVIS COUNTY, UTAH
Ridge Park Office Condominiums
SHEET 2 OF 3



FLOOR PLAN
BUILDING A



EXTERIOR WALL DIMENSIONS



CUT ELEVATION VIEW

LEGEND	
COMMON AREA	
PRIVATE AREA	


H HILL & ARGYLE, Inc.
Engineering and Surveying
181 North 200 West, Suite #4, Bountiful, Utah 84010
(801) 298-2236 Phone, (801) 298-5983 Fax
CONDOPLAT 06-276 10/27/06

DAVIS COUNTY RECORDER
ENTRY NO. 2232000 FEE PAID \$101.00
FILED FOR RECORD AND RECORDED THIS 29th DAY OF Dec 2006 AT
10:27 A.M. IN BOOK 5189 OF Page 300
COUNTY RECORDER *Richard J. Mangrum*
BY _____ DEPUTY

4293-5

4293-5

A graphic scale bar and north arrow. The scale bar is horizontal, with alternating black and white segments. It is marked with the numbers 30, 15, 0, 30, 60, and 90. Below the scale bar, the text "SCALE: 1" = 30'" is written. Above the scale bar, a north arrow points upwards, with the letter "N" at the top.



Ε - Ε 024

ENTRY NO. 2232000 FEE PAID \$ 101.00
FILED FOR RECORD AND RECORDED THIS 29th DAY OF Dec, 2006 AT
10127 A.M. IN BOOK 4189 OR page 388
COUNTY RECORDER Michael J. Maughan
BY _____ DEPUTY _____

3-3224