

**Surveyor's Certificate.**

I hereby certify that the tract of land shown on this map and owned by Henry Phipps Jr. and Annie C. Phipps his wife is bounded and described as follows, to wit: Beginning at the Northeast corner of Lot 16, Block 20, Five-acre Plat A, Big Field Survey, thence running West 760.82 feet, thence South 287.1 feet, thence West 157.0 feet, thence South 287.1 feet, thence East 157.0 feet, thence South 287.1 feet, thence East 157.0 feet, thence North 287.1 feet, to the place of beginning, containing 20 acres, and known as Lots 6, 16, 17 and 18, Block 20, Five-acre Plat A, Big Field Survey; that I have, by authority of the said owner thereof, subdivided the same into lots, streets, avenues and alleys, to be known as **Gordon Plat**; that the same has been correctly staked out on the ground as represented hereon, and that the Steel Tape used in making the survey thereon was tested June 7<sup>th</sup>, 1906, in accordance with the provisions of the revised ordinances of 1903, and at the time was in adjustment with the official standard prescribed in said ordinance.

**Names and Dimensions of Parcels of Land Designated for Public Use:**

**Streets:**  
 Blair Street, 66 feet wide and 254.1 feet long, running North and South  
 Fourth East Street, East half, 33.0 feet wide and 574.2 feet long running North and South  
 Fourth East Street, West half, 33.0 feet wide and 574.2 feet long running North and South  
 Denver Street, 66 feet wide and 287.1 feet long running North and South  
 Herbert Avenue, South half, 33 feet wide and 660 feet long, running East and West  
 Steffenson Avenue, North half, 33 feet wide and 726 feet long, running East and West  
 Steffenson Avenue, 66 feet wide and 660 feet long, running East and West

**Alleys:**  
 One alley, 16 feet wide, running North and South through Block 1  
 . . . . . 16 . . . . . 2  
 . . . . . 16.5 . . . . . 3  
 . . . . . 16.5 . . . . . 4  
 . . . . . 16.5 . . . . . 5  
 . . . . . 16.5 . . . . . 6

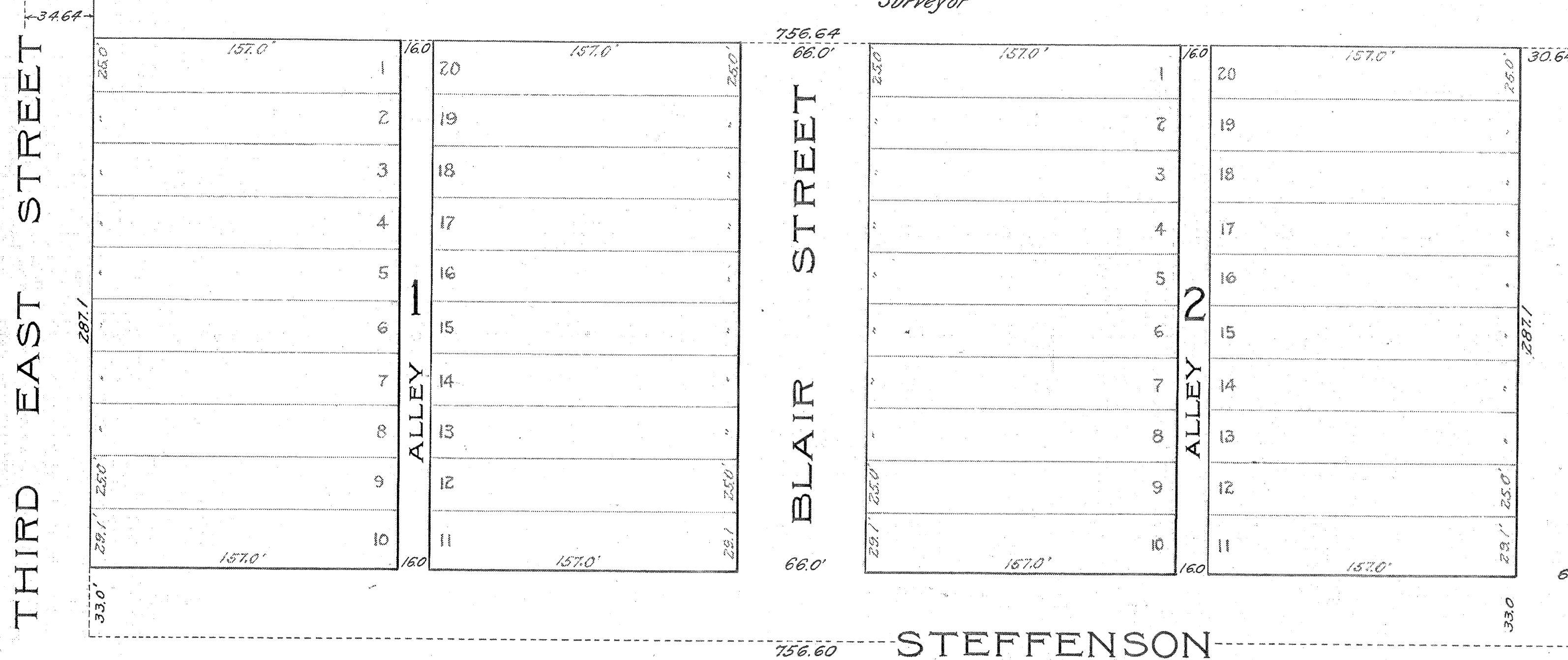
**Dimensions of Lots.**

Lots 1 to 9 inclusive, and Lots 12 to 20 inclusive, Block 1, and Lots 1 to 9 inclusive and Lots 12 to 20 inclusive, Block 2, are 25 feet by 157 feet  
 Lots 10 and 11, Block 1, and Lots 10 and 11, Block 2, are 29.1 feet by 157.0 feet  
 Lots 1 and 30, Block 3, and Lot 1, Block 4, are 40 feet by 148.5 feet  
 Lots 2 to 14 inclusive, and Lots 17 to 29 inclusive, Block 3, and Lots 2 to 14 inclusive, Block 4, are 33.0 feet by 148.5 feet  
 Lots 15 and 16, Block 3, and Lot 15, Block 4, are 33.2 feet by 148.5 feet  
 Lot 16, Block 4, is 33.2 feet by 148.5 feet  
 Lots 17 to 29 inclusive, Block 4, are 33.0 feet by 148.5 feet  
 Lot 30, Block 4, is 40 feet by 148.5 feet  
 Lot 1, Block 5, and Lots 1 and 20, Block 6, are 29.1 feet by 148.5 feet  
 Lots 2 to 10 inclusive, Block 5, and Lots 2 to 19 inclusive, Block 6, are 25.0 feet by 148.5 feet  
 Lots 11 to 19 inclusive, Block 5, are 25.0 feet by 148.5 feet  
 Lot 20, Block 5, is 29.1 feet by 148.5 feet

**Center Lines of Streets.**

The center line of Blair Street coincides with the center line of Blair Street in Leadville Place. The center line of Denver Street coincides with the center line of Denver Street in Denver Place. The center line of Herbert Avenue coincides with the center line of Herbert Avenue in Leadville Place. The center line of Fourth East Street coincides with the center line of the same street in Salt Lake City Survey. This map is accurately drawn to a scale of 1 1/2" = 100 feet.

*Ray H. Patterson*  
 Surveyor



**Owner's Dedication**

Know all men by these presents, that Henry Phipps Jr. and Annie C. Phipps his wife, owners of the above described tract of land, having caused the same to be subdivided into lots, streets, avenues and alleys, to be hereafter known as Gordon Plat, do hereby dedicate for the perpetual use of the public all parcels of land designated in the Surveyor's Certificate and shown on this map as intended for public uses.

In the presence of  
*Charles H. H. H. H.*

*Henry Phipps Jr.*  
 by *John S. Phipps* Atty.  
*Annie C. Phipps*  
 by *John S. Phipps* Atty.

**Acknowledgment before Notary Public**

State of New York, ss.  
 County of New York, ss.  
 On this 11<sup>th</sup> day of June, A.D. 1906, personally appeared before me the undersigned, a notary public in and for said county of New York, *Henry Phipps Jr. and Annie C. Phipps his wife*, the signers of the foregoing instrument, who duly acknowledged to me that they executed the same freely and voluntarily, and for the uses and purposes therein mentioned.

*John High*  
 Notary Public  
 179 New York County N.Y.

**GORDON PLAT.**

A SUBDIVISION OF  
 LOTS 6, 16, 17 AND 18, BLOCK 20.

5-ACRE PLAT A.  
 BIG FIELD SURVEY.

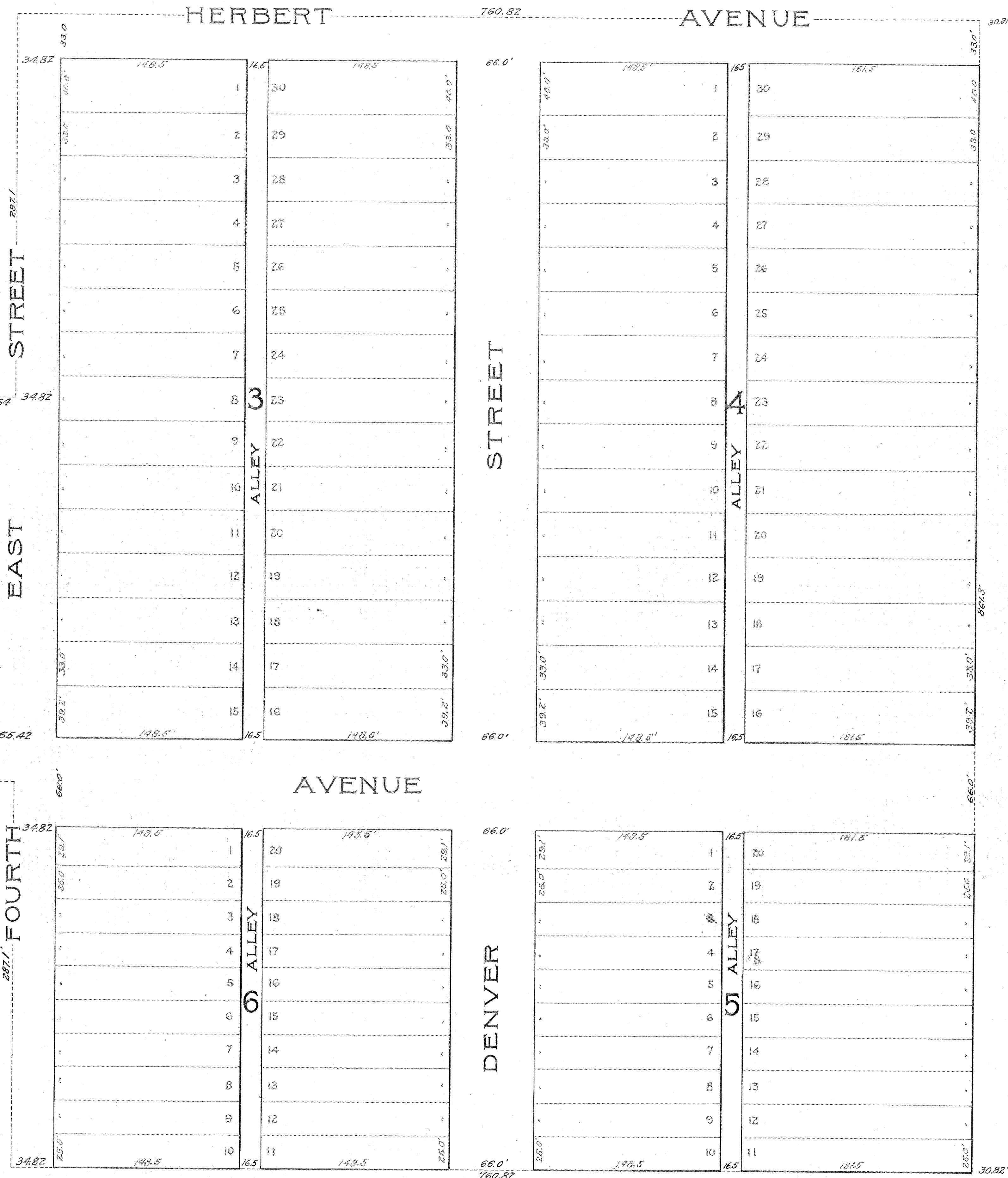
Scale 50 Feet to 1 Inch.

Presented to the City Council and the City Engineer authorized to approve, August 6, 1906.

Approved August 11, 1906.

*J. B. Mozette* City Recorder  
*L. P. Keane* City Engineer

*Trust Brod*  
 E Plats  
 23.  
*L. P. Keane*



Monument at 5<sup>th</sup> East and 9<sup>th</sup> South Street.

PARK

EAST STREET

EAST STREET

FIFTH STREET

LIBERTY

\$2,100