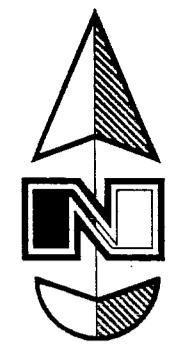
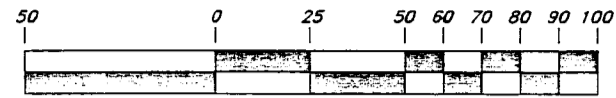


3441-1



Scale: 1" = 50'



Graphic Scale

Legend

- Centerline
 - Found Monument
 - Found Rebar & Cap
 - Set Rebar & Cap w/ Fence post
 - Set Hub & Tack
 - Existing Fence
 - ◆ Section Corner
- D.C.S. Davis County Surveyor

Note:

10' Wide Public Utility and Drainage Easements each side of Property line as indicated by dashed lines, except as otherwise shown.

NOTE:

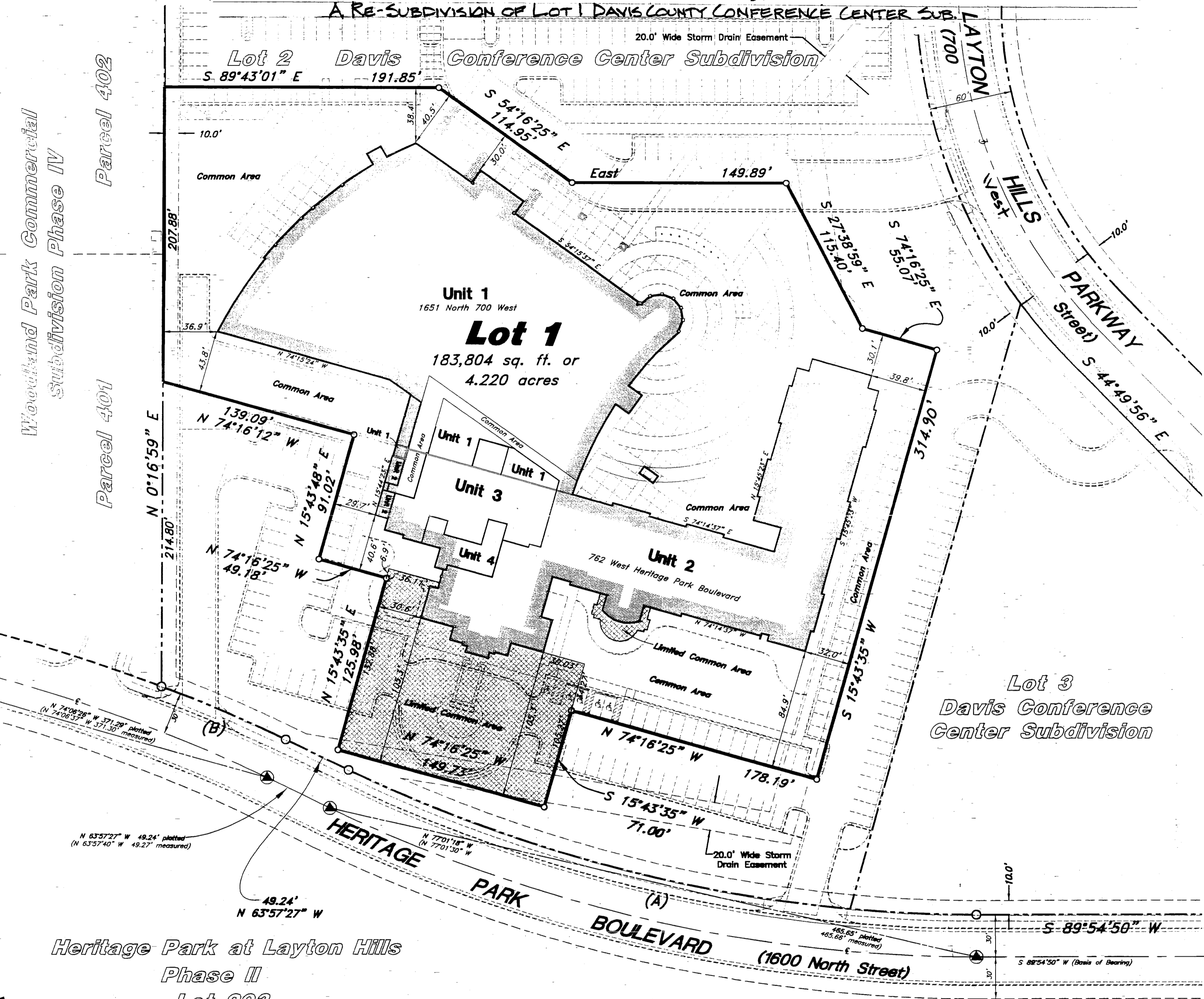
1. Construction of this project was not complete at the time this Condominium Plat was prepared. Upon completion of construction, this Map may require amendment in the event of any material change in the final location.
2. Each condominium unit contained within the project is as shown and is designated by a number. (See sheets 2 thru 6)
3. All patios, decks, or balconies, contained within the project are considered Limited Common Areas. They are set aside and reserved for the use of the respective condominium unit to which they are attached and/or appurtenant.
4. All other area contained within the project, but not shown with diagonal stripes or cross hatched lines are considered Common Area, including covered and uncovered parking, storm water detention and drainage easement area.
5. Dimensions on Sheet 1 of 6 are to exterior foundation only.
6. All Common Area is considered to be an easement for public utility and drainage purposes. (Sheet 1 of 6 Only)

Condominium Plat

Davis County Conference Center Condominiums

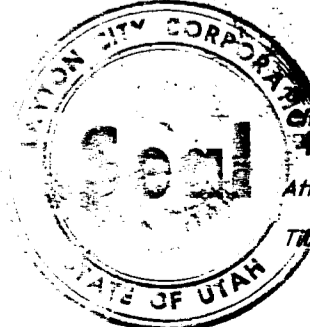
A part of the Northwest Quarter of Section 17, T4N, R1W, SLB&M, U.S. Survey
Layton City, Davis County, Utah

A RE-SUBDIVISION OF LOT 1 DAVIS COUNTY CONFERENCE CENTER SUB.



Heritage Park at Layton Hills
Phase II
Lot 203

LAYTON CITY ENGINEER
I hereby certify that I have carefully investigated the lines of Survey of the foregoing and find them to be correct and to agree with the lines and monuments on record in this office.
Signed this 4th day of March, 2004.
[Signature]
City Engineer



LAYTON CITY APPROVAL
This is to certify that this plat and dedication of this plat were duly approved and accepted by the Council of Layton City, Utah this 5th day of February, 2004.
[Signature]
City Recorder

LAYTON CITY PLANNING COMMISSION
Approved by the Layton City Planning Commission on the _____ day of _____, 2004.
[Signature]
Acting Chairperson

LAYTON CITY ATTORNEY
Approved by the Layton City Attorney this 25th day of February, 2004.
[Signature]
Signature

GREAT BASIN ENGINEERING NORTH
CONSULTING ENGINEERS AND SURVEYORS
5746 South 1475 East - Suite 200
Ogden, Utah 84403
P.O. Box 150048, Ogden, Utah 84415
Ogden (801)324-4515 Salt Lake City (801)521-0222 Fax (801)324-7244

SURVEYOR'S CERTIFICATE

I, Mark E. Babbitt, a Registered Professional Land Surveyor in the State of Utah, do hereby certify that this plat of Davis County Conference Center Condominiums in Layton City, Davis County, Utah has been correctly drawn to the designated scale and is a true and correct representation of the following description of lands included in said subdivision, based on data compiled from records in the Davis County Recorder's Office and of a survey made on the ground.

Signed this 6th day of February, 2004.

166484 License No.

[Signature]
Mark E. Babbitt

OWNER'S CONSENT TO RECORD

Know all men by these presents that the undersigned Owner of the tract of land described hereon, Davis County Conference Center Condominiums a condominium project located on said tract of land, do hereby make this Certificate that said owner has caused a survey to be made, and this Condominium Plat Consisting of six (6) sheets to be prepared, that said owner has consented to and do hereby consent to the recordation of this Condominium Plat in accordance with the provisions in Section 57-8-131(1) of the "Utah Condominium Ownership Act", creating units, common areas, limited common areas and convertible space, and also grant and dedicate unto all owners of units upon which private sanitary sewer lines are constructed or which are otherwise dependent upon such sanitary sewer lines, an easement over such sanitary sewer lines for the purpose of perpetual maintenance and operation, all as set forth herein.

Signed this 10th day of February, 2004.

Davis County

[Signature]
Dannie R. McConkie

ACKNOWLEDGMENT

State of Utah }
County of }

On the 10th day of February, 2004, personally appeared before me, Dannie R. McConkie, who being by me duly sworn did say that he is Commission Chair of Davis County, and that said instrument was signed in behalf of said County by a resolution of its County Commission and Dannie R. McConkie acknowledged to me that said County Commission executed the same.

Residing At: Farmington, Utah
A Notary Public Commissioned in Utah

Commission Expires: 10/5/06
Linda May
Print Name

BOUNDARY DESCRIPTION

All of Lot 1, Davis County Conference Center Subdivision, Layton City, Davis County, Utah, according to the official plat thereof:

Project Address:

- Conference Center (Unit 1) - 1651 North 700 West (Unit 2+4)
- Hotel (Unit 2) - 762 West Heritage Park Boulevard

Narrative:

This Condominium plat was prepared at the request of Davis County. There are platted Subdivisions on the North and West sides and public streets on the South and East sides.
Centerline monuments were found in Heritage Park Boulevard (1600 North Street) which checked within several hundredths of the recorded subdivision plat of "Heritage Park at Layton Hills Phase Two". The basis of bearing was established from the Brass Cap Monuments found at the Center of Section 17, and the South 1/4 corner of Section 17, T4N, R1W, SLB&M a line bearing North 0°09'50" East between said monuments was used to establish the basis of bearing.

1-199E

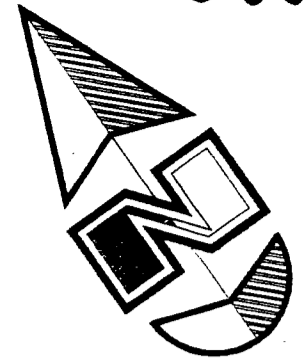
Sheet 1 of 6

DAVIS COUNTY RECORDER
ENTRY NO. 1969569 FEE PAID
FILED FOR RECORD AND
RECORDED March 12, 2004 AT
12:15 PM IN BOOK 3495 OF OFFICIAL
RECORDS, PAGE 511 RECORDED
FOR Davis County
[Signature]
DAVIS COUNTY RECORDER

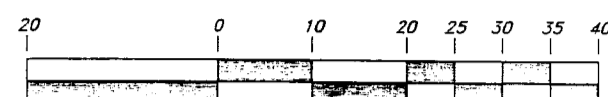
BY: _____ DEPUTY 1-199E

3441-5

3441-5

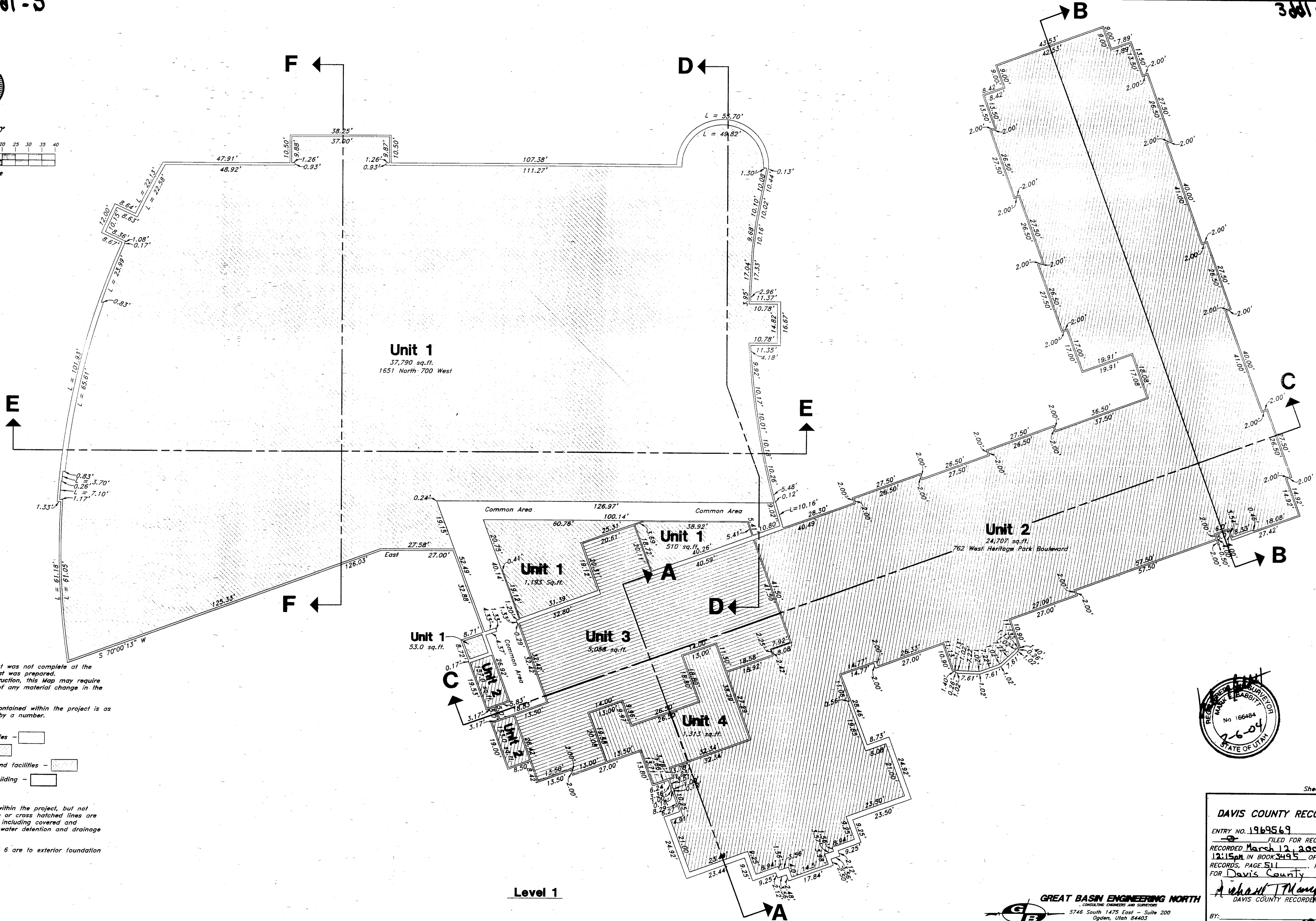


Scale: 1" = 20'

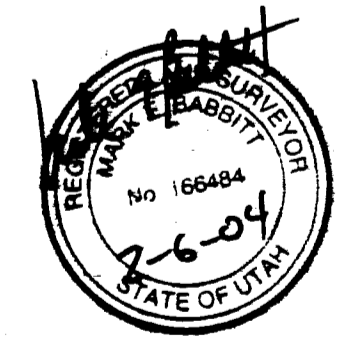


Graphic Scale

2-1665



- NOTE:**
- Construction of this project was not complete at the time this Condominium Plat was prepared. Upon completion of construction, this Map may require amendment in the event of any material change in the final location.
 - Each condominium unit contained within the project is as shown and is designated by a number. (See sheets 2 thru 6)
- Common areas and facilities -
- Private ownership -
- Limited common areas and facilities -
- Exterior foundation of building -
- (See Sheet 1 of 6)
- All other area contained within the project, but not shown with diagonal stripe or cross hatched lines are considered Common Area, including covered and uncovered parking, storm water detention and drainage easement area.
 - Dimensions on Sheet 1 of 6 are to exterior foundation only.



Sheet 2 of 6

2-1665

Level 1

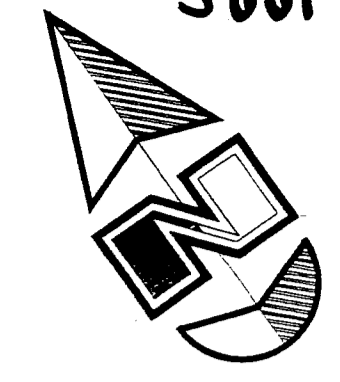
GREAT BASIN ENGINEERING NORTH
 CONSULTING ENGINEERS AND SURVEYORS
 5746 South 1475 East - Suite 200
 Ogden, Utah 84403
 P.O. Box 150048, Ogden, Utah 84415
 Ogden (801)334-4515 Salt Lake City (801)521-0222 Fax (801)332-7544

DAVIS COUNTY RECORDER
 ENTRY NO. 1969569 FEE PAID
 FILED FOR RECORD AND
 RECORDED March 12, 2004, AT
 12:15pm IN BOOK 3495 OF OFFICIAL
 RECORDS, PAGE 511 RECORDED
 FOR Davis County
 A. Michael J. Mandel
 DAVIS COUNTY RECORDER
 BY: _____ DEPUTY
 2-1665

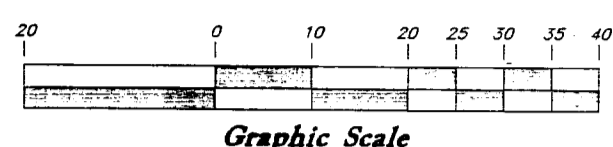
07/31/04PCP

3881-3

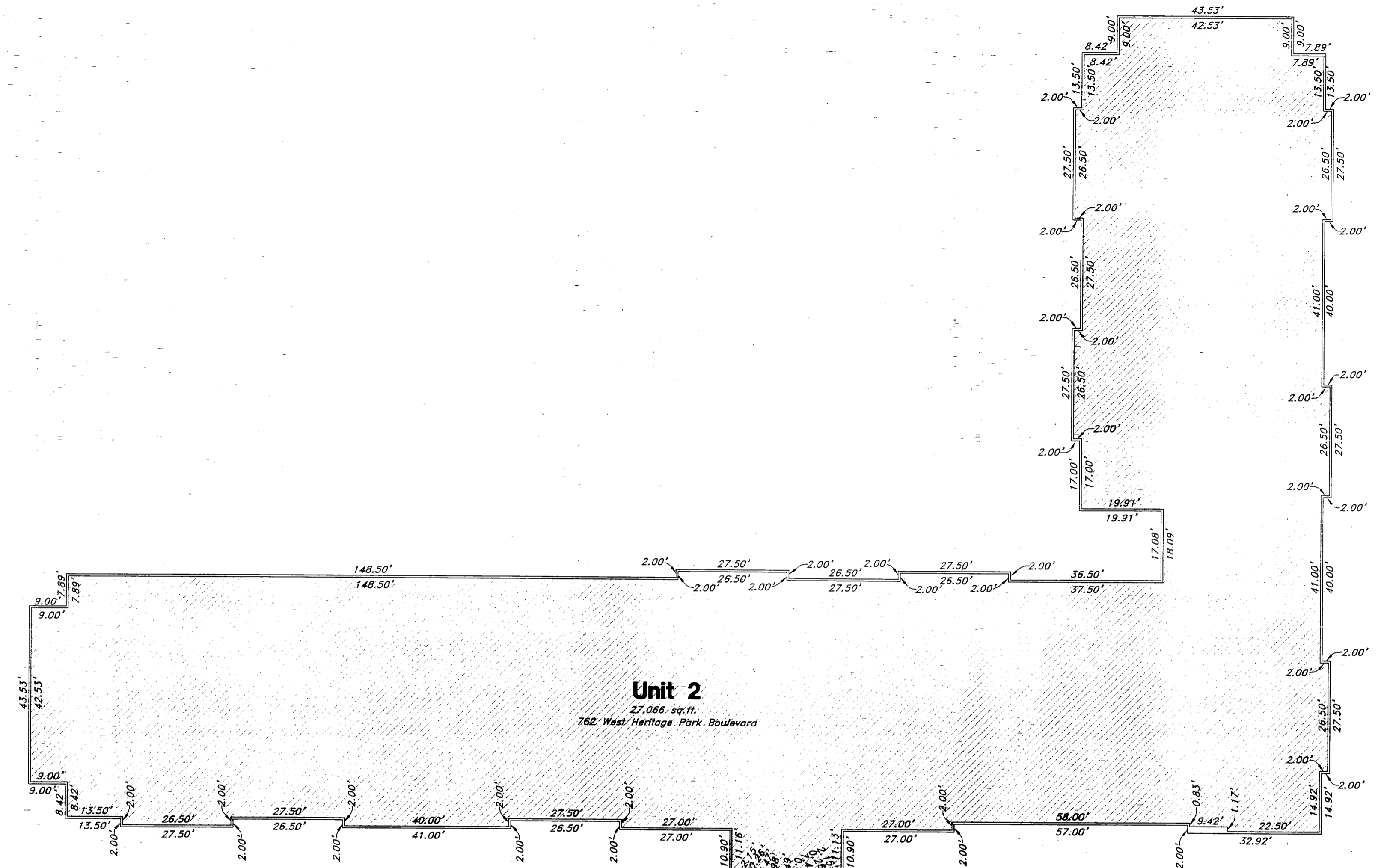
3881-3



Scale: 1" = 20'



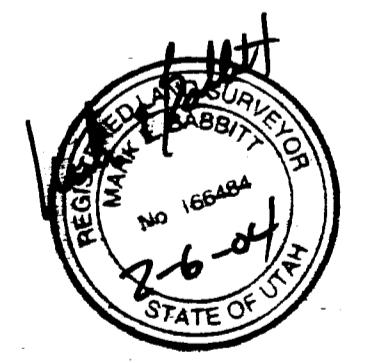
3991-3



Unit 2
27,066 sq. ft.
762 West Heritage Park Boulevard

Level 2

- NOTE:**
- Construction of this project was not complete at the time this Condominium Plat was prepared. Upon completion of construction, this Map may require amendment in the event of any material change in the final location.
 - Each condominium unit contained within the project is as shown and is designated by a number. (See sheets 2 thru 6)
- Common areas and facilities -
- Private ownership -
- Limited common areas and facilities -
- Exterior foundation of building -
- (See Sheet 1 of 6)
- All other area contained within the project, but not shown with diagonal stripe or cross hatched lines are considered Common Area, including covered and uncovered parking, storm water detention and drainage easement area.
 - Dimensions on Sheet 1 of 6 are to exterior foundation only.



Sheet 3 of 6

DAVIS COUNTY RECORDER

ENTRY NO. 1969569 FEE PAID

FILED FOR RECORD AND

RECORDED March 12, 2004 AT

12:15 pm IN BOOK 3495 OF OFFICIAL

RECORDS, PAGE 511 RECORDED

FOR Davis County

Michael T. Manderson

DAVIS COUNTY RECORDER

GREAT BASIN ENGINEERING NORTH
CONSULTING ENGINEERS AND SURVEYORS

5746 South 1475 East - Suite 200
Ogden, Utah 84403

P.O. Box 150048, Ogden, Utah 84415

Ogden (801)334-4515 Salt Lake City (801)321-0222 Fax (801)332-7544

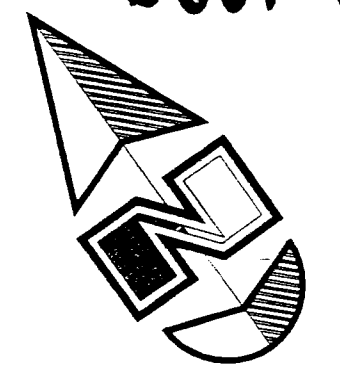
BY: *E-11PE* DEPUTY

03/31/04

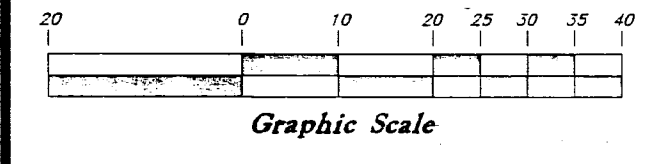
E-11PE

3001-A

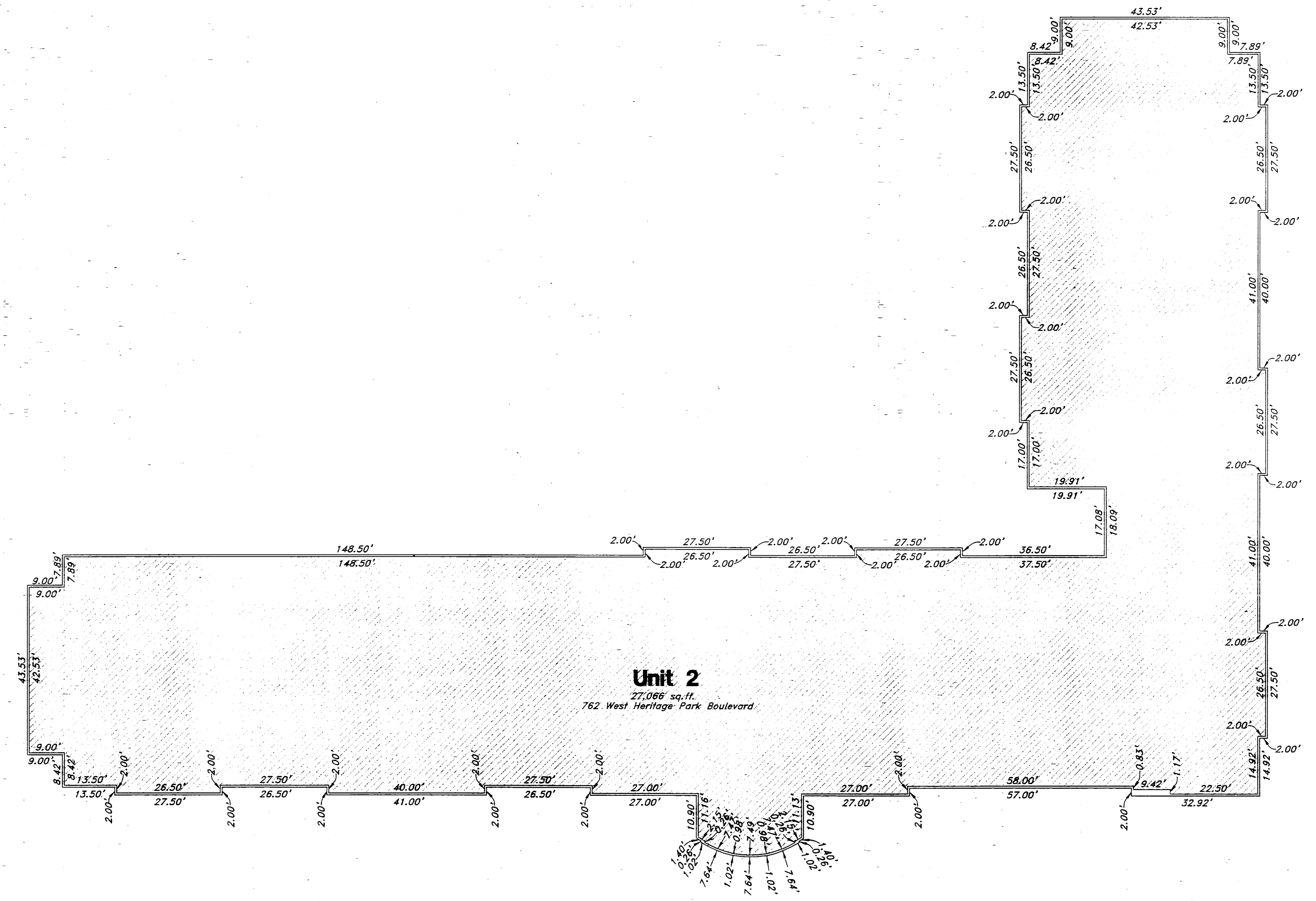
3001-A



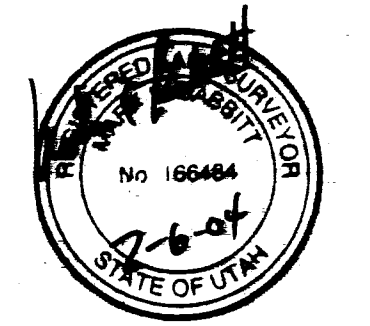
Scale: 1" = 20'



3991-4



- NOTE:**
1. Construction of this project was not complete at the time this Condominium Plat was prepared. Upon completion of construction, this Map may require amendment in the event of any material change in the final location.
 2. Each condominium unit contained within the project is as shown and is designated by a number. (See sheets 2 thru 6)
- Common areas and facilities -
- Private ownership -
- Limited common areas and facilities -
- Exterior foundation of building -
- (See Sheet 1 of 6)
3. All other area contained within the project, but not shown with diagonal stripe or cross hatched lines are considered Common Area, including covered and uncovered parking, storm water detention and drainage easement area.
 4. Dimensions on Sheet 1 of 6 are to exterior foundation only.



Sheet 4 of 6

DAVIS COUNTY RECORDER

ENTRY NO. 1969569 FEE PAID

RECORDED FOR RECORD AND FILED FOR RECORD AND AT 12:15 PM IN BOOK 395 OF OFFICIAL RECORDS, PAGE 611 RECORDED FOR Davis County

Richard P. Moulton
DAVIS COUNTY RECORDER

GREAT BASIN ENGINEERING NORTH
CONSULTING ENGINEERS AND ARCHITECTS

5746 South 1475 East - Suite 200
Ogden, Utah 84403
P.O. Box 150048, Ogden, Utah 84415
Ogden (801)244-0116 Salt Lake City (801)231-0222 Provo (801)262-7544

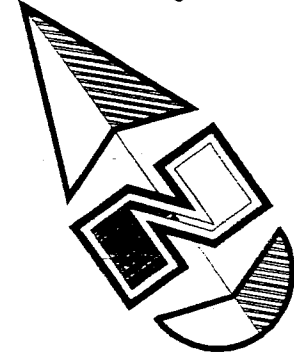
H-199E

DEPUTY H-199E

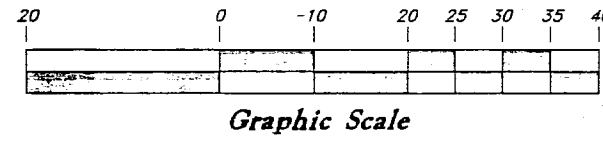
03N109CP

3dd1-2

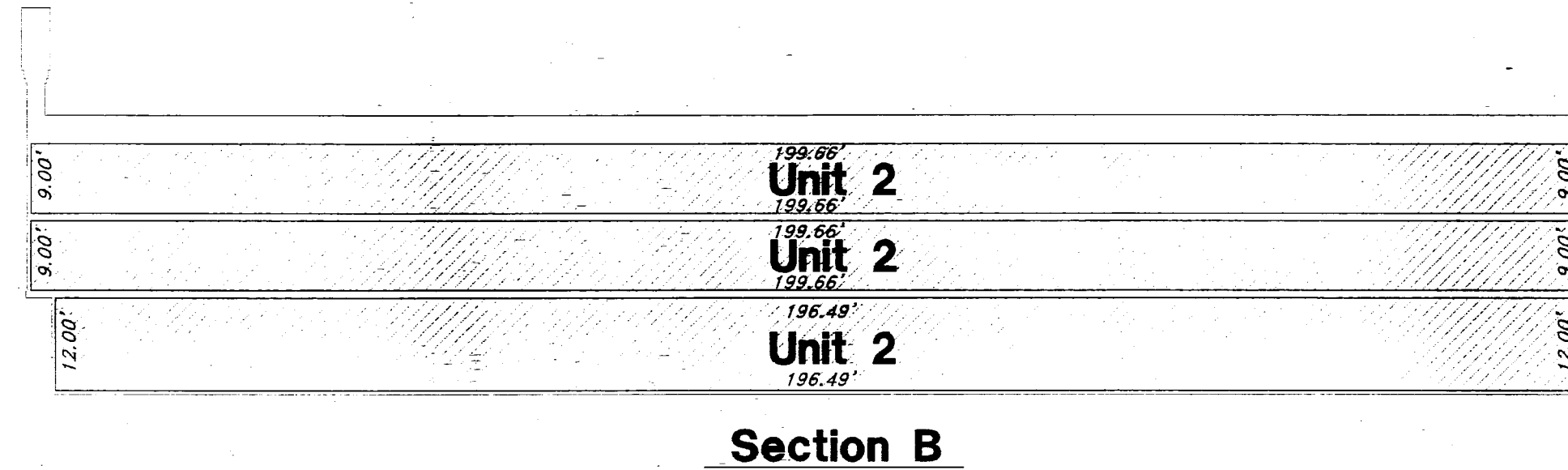
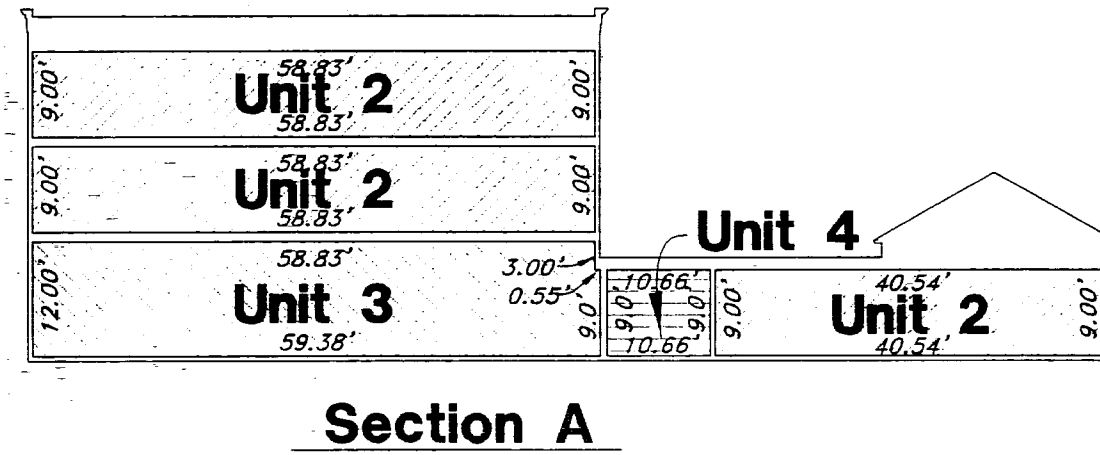
3dd1-2



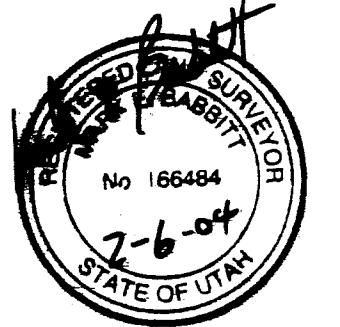
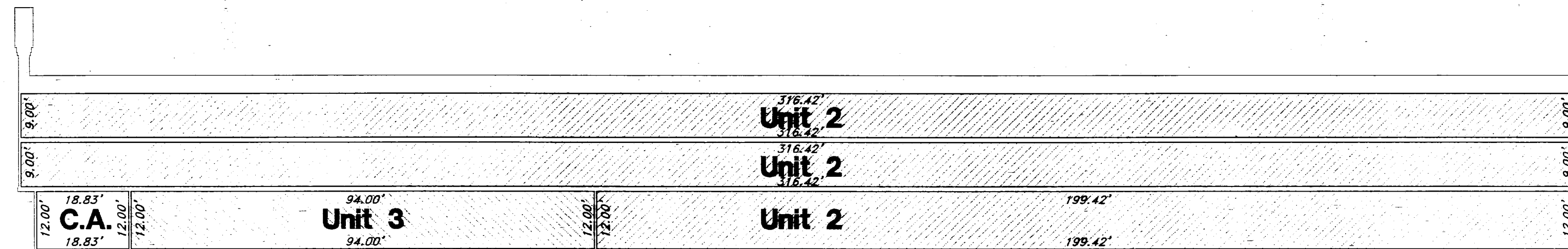
Scale: 1" = 20'



3-1669



- NOTE:**
- Construction of this project was not complete at the time this Condominium Plat was prepared. Upon completion of construction, this Map may require amendment in the event of any material change in the final location.
 - Each condominium unit contained within the project is as shown and is designated by a number. (See sheets 2 thru 6)
- Common areas and facilities -
- Private ownership -
- Limited common areas and facilities -
- Exterior foundation of building -
- (See Sheet 1 of 6)
- All other area contained within the project, but not shown with diagonal stripe or cross hatched lines are considered Common Area, including covered and uncovered parking, storm water detention and drainage easement area.
 - Dimensions on Sheet 1 of 6 are to exterior foundation only.



2-199E

GREAT BASIN ENGINEERING NORTH
 CONSULTING ENGINEERS AND SURVEYORS
 5746 South 1475 East - Suite 200
 Ogden, Utah 84403
 P.O. Box 150040, Ogden, Utah 84415
 Ogden (801)394-4515 Salt Lake City (801)521-0222 Fax (801)392-7544

DAVIS COUNTY RECORDER

ENTRY NO. 1969569 FEE PAID 0

RECORDED March 12 2004 AT 12:15pm IN BOOK 3495 OF OFFICIAL RECORDS, PAGE 511

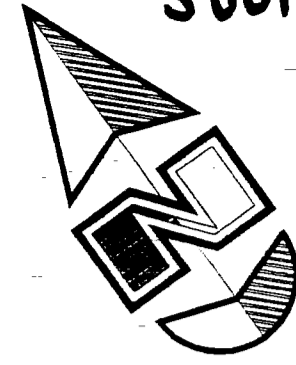
FOR Davis County

BY: Michael J. Maule DAVIS COUNTY RECORDER

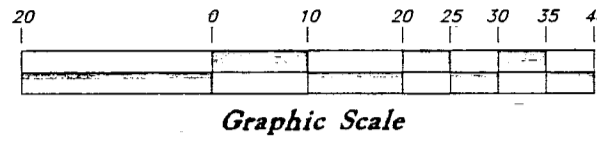
DEPOSIT 2-199E

3dd1-p

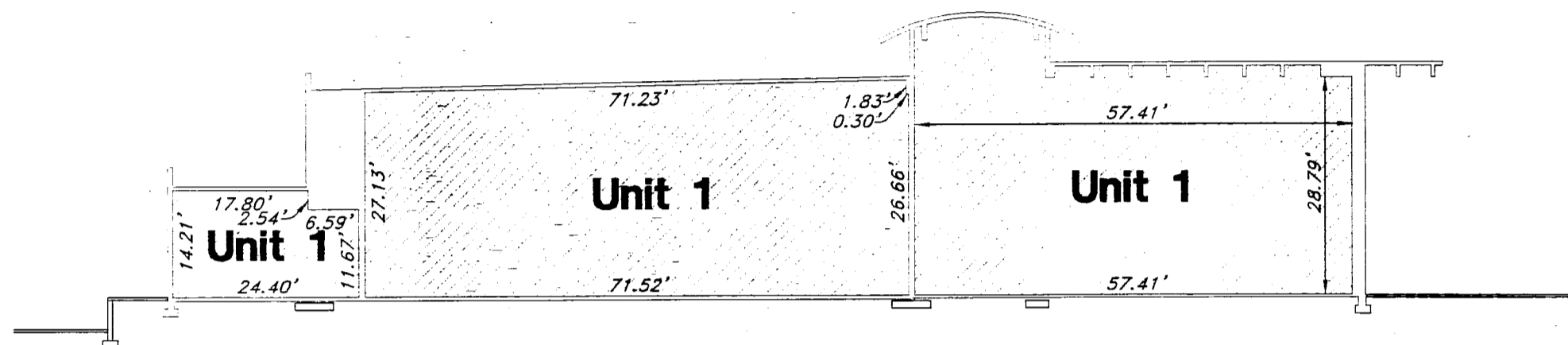
3dd1-p



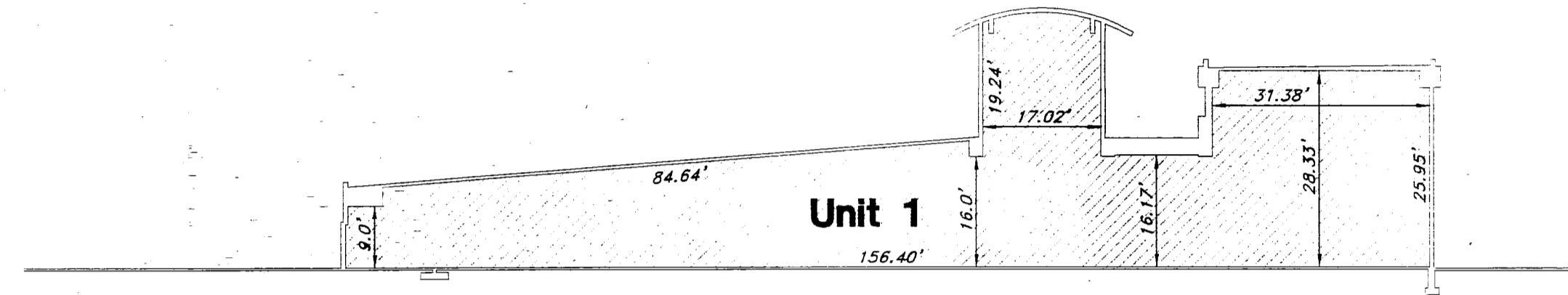
Scale: 1" = 20'



Graphic Scale



Section D

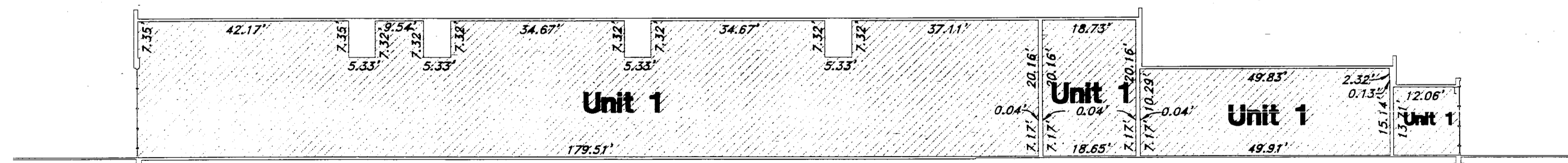


Section E

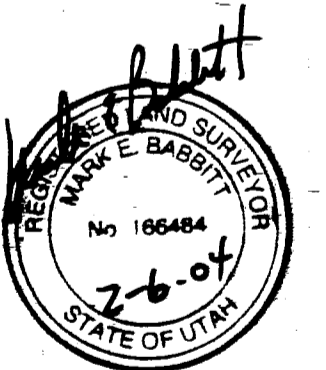
9-1665
3

NOTE:

1. Construction of this project was not complete at the time this Condominium Plat was prepared. Upon completion of construction, this Map may require amendment in the event of any material change in the final location.
 2. Each condominium unit contained within the project is as shown and is designated by a number. (See sheets 2 thru 6)
- Common areas and facilities -
- Private ownership -
- Limited common areas and facilities -
- Exterior foundation of building -
- (See Sheet 1 of 6)
3. All other area contained within the project, but not shown with diagonal stripe or cross hatched lines are considered Common Area, including covered and uncovered parking, storm water detention and drainage easement area.
 4. Dimensions on Sheet 1 of 6 are to exterior foundation only.



Section F



J-199E

Sheet 6 of 6

GREAT BASIN ENGINEERING NORTH
 CONSULTING ENGINEERS AND SURVEYORS
 5746 South 1425 East - Suite 200
 Ogden, Utah 84403
 P.O. Box 150048, Ogden, Utah 84415
 Open (801)394-4515 Salt Lake City (801)521-0222 Fax (801)392-7544

DAVIS COUNTY RECORDER
 ENTRY NO. 1969569 FEE PAID
 FILED FOR RECORD AND
 RECORDED March 12, 2004 AT
 12:15 PM IN BOOK 3495 OF OFFICIAL
 RECORDS, PAGE 511 RECORDED
 FOR Davis County
 DEPUTY RECORDER
 BY: J-IPPE

0.31109CFP