

VACATING PLAT

A PORTION OF 700 EAST STREET

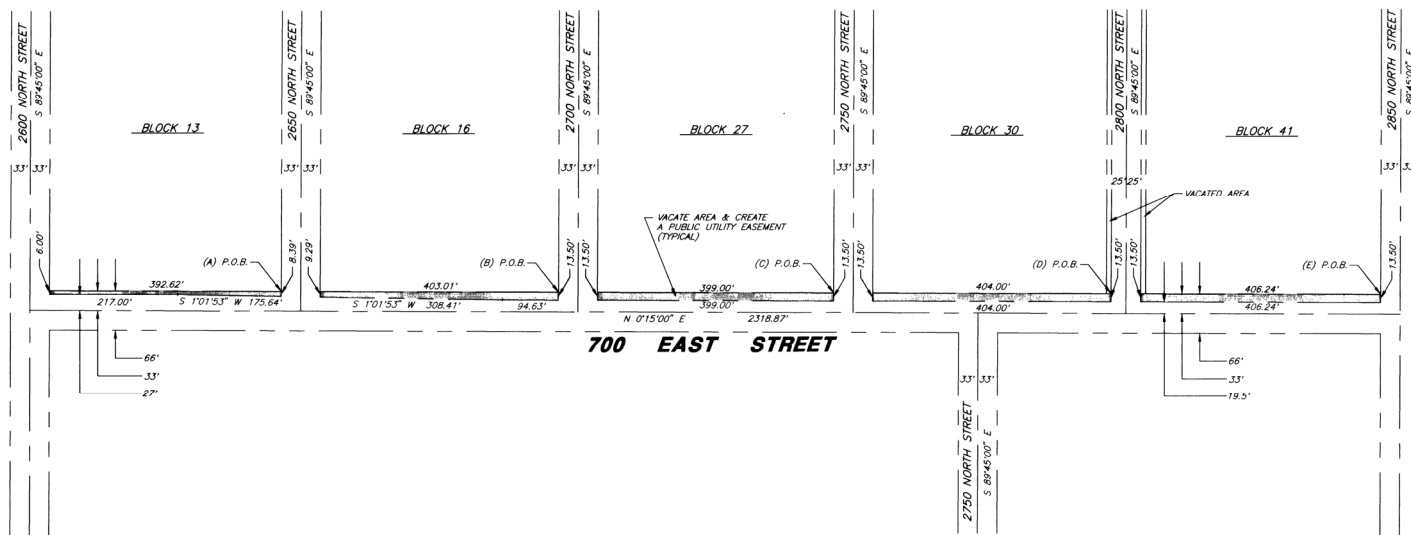
FROM 2600 NORTH STREET TO 2850 NORTH STREET

NORTH OGDEN CITY, WEBER COUNTY UTAH

SEPTEMBER 1993



1" = 100'



DESCRIPTION (A)

BEGINNING AT THE NORTH EAST CORNER BLOCK 13, PLAT "A", NORTH OGDEN CITY SURVEY RUNNING THENCE:
S 89°45'00" E 8.39 FEET THENCE,
S 1°01'53" W 175.64 FEET THENCE,
S 01°15'00" W 217.00 FEET THENCE,
N 89°45'00" W 6.00 FEET TO THE EAST LINE OF SAID BLOCK 13 THENCE,
N 01°15'00" E 392.62 FEET ALONG SAID LINE TO THE POINT OF BEGINNING.
CONTAINING 2,566 s.f.

DESCRIPTION (B)

BEGINNING AT THE NORTH EAST CORNER BLOCK 16, PLAT "A", NORTH OGDEN CITY SURVEY RUNNING THENCE:
S 89°45'00" E 13.50 FEET THENCE,
S 01°15'00" W 94.63 FEET THENCE,
S 1°01'53" W 308.41 FEET THENCE,
N 89°45'00" W 9.29 FEET TO THE EAST LINE OF SAID BLOCK 16 THENCE,
N 01°15'00" E 403.01 FEET ALONG SAID LINE TO THE POINT OF BEGINNING.
CONTAINING 4,792 s.f.

DESCRIPTION (C)

BEGINNING AT THE NORTH EAST CORNER BLOCK 27, PLAT "A", NORTH OGDEN CITY SURVEY RUNNING THENCE:
S 89°45'00" E 13.50 FEET THENCE,
S 01°15'00" W 399.00 FEET THENCE,
N 89°45'00" W 13.50 FEET TO THE EAST LINE OF SAID BLOCK 27 THENCE,
N 01°15'00" E 399.00 FEET ALONG SAID LINE TO THE POINT OF BEGINNING.
CONTAINING 5,386 s.f.

DESCRIPTION (D)

BEGINNING AT THE NORTH EAST CORNER BLOCK 30, PLAT "A", NORTH OGDEN CITY SURVEY RUNNING THENCE:
S 89°45'00" E 13.50 FEET THENCE,
S 01°15'00" W 404.00 FEET THENCE,
N 89°45'00" W 13.50 FEET TO THE EAST LINE OF SAID BLOCK 30 THENCE,
N 01°15'00" E 404.00 FEET ALONG SAID LINE TO THE POINT OF BEGINNING.
CONTAINING 5,454 s.f.

DESCRIPTION (E)

BEGINNING AT THE NORTH EAST CORNER BLOCK 41, PLAT "A", NORTH OGDEN CITY SURVEY RUNNING THENCE:
S 89°45'00" E 13.50 FEET THENCE,
S 01°15'00" W 406.24 FEET THENCE,
N 89°45'00" W 13.50 FEET TO THE EAST LINE OF SAID BLOCK 41 THENCE,
N 01°15'00" E 406.24 FEET ALONG SAID LINE TO THE POINT OF BEGINNING.
CONTAINING 5,484 s.f.

NORTH OGDEN CITY APPROVAL AND ACCEPTANCE

This is to certify that this Vacating Plat is duly accepted and approved by the North Ogden City Corporation, North Ogden City Corporation also hereby establishes and dedicates to North Ogden City, public utility easements across all those areas shown on this plat to be vacated, the same to be used for the installation, maintenance, and operation of public service lines and drainage as may be authorized by North Ogden City.

Signed this 14th day of September, 1993

Attest: [Signature]

Title: Recorder

[Signature]
Mayor



NORTH OGDEN CITY ENGINEER

I HEREBY CERTIFY THAT I HAVE EXAMINED THIS PLAT AND IT IS CORRECT IN ACCORDANCE WITH INFORMATION FILED IN THIS OFFICE.

SEPT. 14, 1993
DATE

[Signature]
CITY ENGINEER

SURVEYOR'S CERTIFICATE

I, BRENT SLATER, A REGISTERED PROFESSIONAL LAND SURVEYOR HOLDING CERTIFICATE NO. 6494 AS PRESCRIBED BY THE STATE OF UTAH DO HEREBY CERTIFY THAT I HAVE COMPILED AN ACCURATE MAP OF LAND TO BE VACATED AS A ROADWAY BY NORTH OGDEN CITY AND THAT IT IS A TRUE AND CORRECT REPRESENTATION OF LANDS IN SAID ROADWAY BASED ON DATA COMPILED FROM RECORDS IN THE WEBER COUNTY RECORDERS OFFICE, AND OF A SURVEY MADE ON THE GROUND.

SIGNED THIS 14 DAY OF Sept., 1993.

[Signature]
BRENT W. SLATER NO. 6494

Prepared By:



CONSULTING
ENGINEERS

2670 QUINCY AVE., SUITE 104
OGDEN, UTAH 84403

COUNTY RECORDER

ENTRY NO. 1250199, FEE PAID

1250199 FILED FOR RECORD AND
RECORDED Oct. 3, 1993, AT

1250199 IN BOOK OF OFFICIAL
RECORDS, PAGE 22, RECORDED

FOR North Ogden City
COUNTY RECORDER

BY: [Signature]
DEPUTY