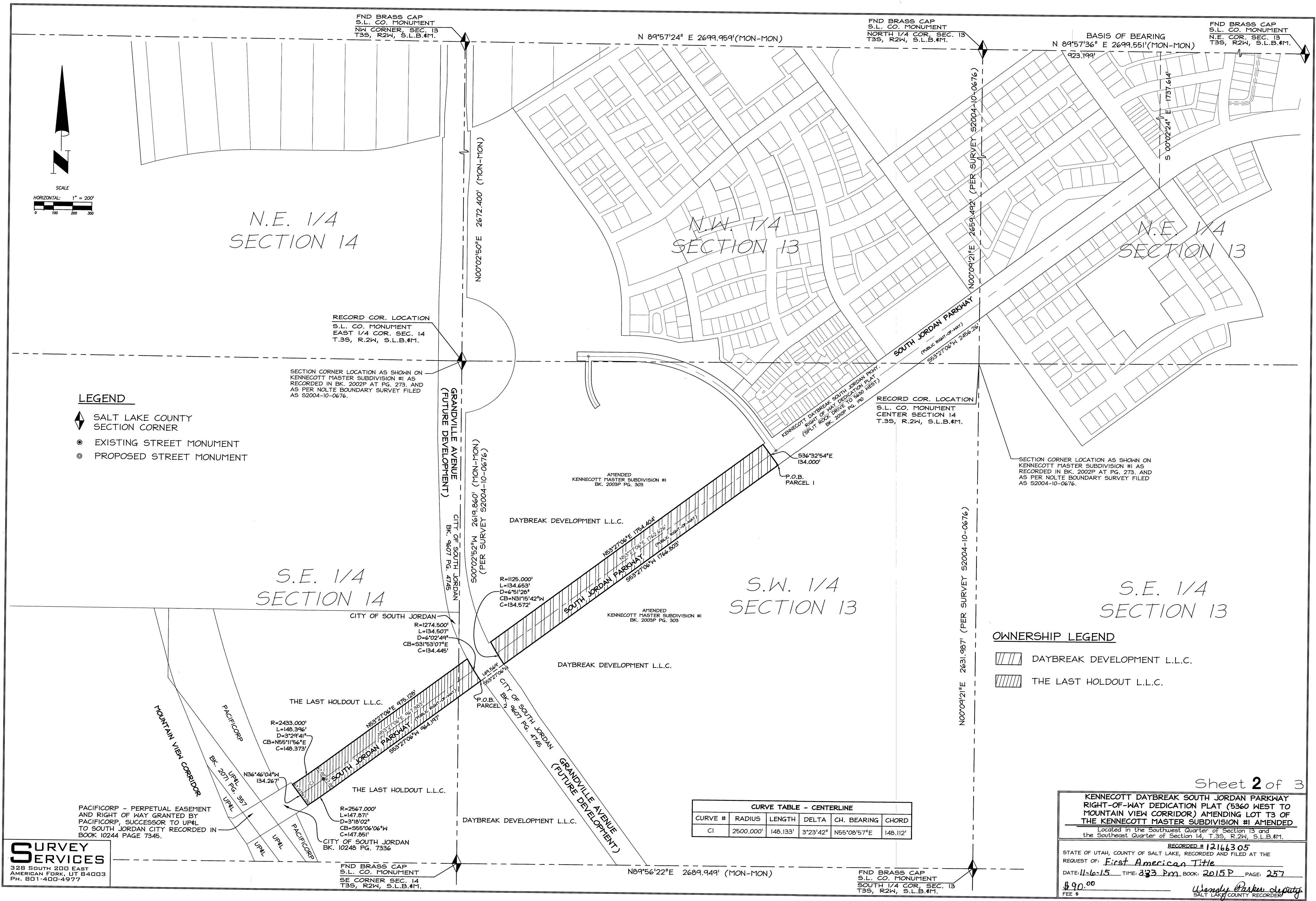


LEGEND

- ◆ SALT LAKE COUNTY SECTION CORNER
- EXISTING STREET MONUMENT
- PROPOSED STREET MONUMENT

SURVEY SERVICES
328 SOUTH 200 EAST
AMERICAN FORK, UT 84003
PH: 801-400-4977



CURVE TABLE - CENTERLINE					
CURVE #	RADIUS	LENGTH	DELTA	CH. BEARING	CHORD
C1	2500.000'	148.133'	3°23'42"	N55°08'57"E	148.112'

OWNERSHIP LEGEND

- DAYBREAK DEVELOPMENT L.L.C.
- THE LAST HOLDOUT L.L.C.

Sheet **2** of 3

KENNECOTT DAYBREAK SOUTH JORDAN PARKWAY
RIGHT-OF-WAY DEDICATION PLAT (5360 WEST TO
MOUNTAIN VIEW CORRIDOR) AMENDING LOT T3 OF
THE KENNECOTT MASTER SUBDIVISION #1 AMENDED
Located in the Southwest Quarter of Section 13 and
the Southeast Quarter of Section 14, T.35, R.2W, S.L.B.#11.

RECORDED # **12166305**
STATE OF UTAH, COUNTY OF SALT LAKE, RECORDED AND FILED AT THE
REQUEST OF: **First American Title**
DATE: **11-6-15** TIME: **3:33 PM** BOOK: **2015P** PAGE: **257**
FEE \$ **90.00**
Wendy Parker, Deputy
SALT LAKE COUNTY RECORDER

PLAT NUMBER	DAYBREAK PARK LOT AREA	DAYBREAK OPEN SPACE LOT AREA	COLLECTOR STREET PARK STRIP AREA	NON-COLLECTOR STREET PARK STRIP AREA	PARK AREA DEDICATED TO CITY	OPEN SPACE AREA DEDICATED TO CITY	TOTAL	NUMBER OF LANES	LINEAR FOOTAGE
△ PLAT 1	2.5723	22.23	2.26	5.23	26.0377	0.00	56.35	SEE AMENDED PLAT 1	
△ PLAT 1 AMENDED	12.61	22.17	2.26	5.23	26.0377	0.00	66.33	13	4,887.83
LOT M-104 AMENDED	0.0000	0.0000	0.00	0.00	0.00	0.00	0.00	0.0	0.00
△ PLAT 2	8.6753	1.0496	1.32	4.74	0.00	0.00	15.7849	SEE AMENDED PLAT 2	
PLAT 2 AMENDED	8.6093	1.0496	1.32	4.74	0.00	0.00	15.7189	21	6,340.29
TOWNHOME 1 SUB.	0.0000	0.0000	0.00	0.00	0.00	0.00	0.00	0.0	0.00
PLAT 3	2.6437	11.6006	0.32	5.89	0.00	0.00	20.4643	9	2,105.88
△ PLAT 4	0.7252	0.3496	0.24	1.97	0.00	0.00	3.2845	SEE AMENDED PLAT 4	
PLAT 4 AMENDED	0.7543	0.3363	0.24	1.97	0.00	0.00	3.3056	9	4,589.98
CARRIAGE CONDOS	0.0000	0.0000	0.00	0.00	0.00	0.00	0.00	0.0	0.00
△ PLAT 5	2.9994	2.7368	1.16	5.39	0.00	0.00	12.3062	SEE AMENDED PLAT 5	
PLAT 5 AMENDED	5.7505	0.0000	1.16	5.39	0.00	0.00	12.3205	26	10,719.18
PLAT 6	3.3710	31.8148	0.00	3.89	0.00	0.00	39.0768	13	3,532.29
△ PLAT 7	16.3272	7.4526	6.27	5.11	0.00	0.00	35.3598	SEE AMENDED PLAT 7C	
PLAT 3A	1.7360	0.0000	0.10	0.39	0.00	0.00	2.2260	5	1,690.56
PLATS 3B-1 THRU 3B-10	0.0000	0.0000	0.00	0.00	0.00	0.00	0.00	0.0	0.00
CORPORATE CENTER #1	0.0000	0.0000	0.07	0.10	0.00	0.00	0.17	0.0	0.00
PLAT 8	* 13.8622	* 0.0431	0.36	3.77	0.00	0.00	* 18.0553	13	4,227.78
△ PLAT 7A AMENDED	16.3272	7.4526	6.27	5.11	0.00	0.00	35.3598	SEE AMENDED PLAT 7C	
△ EASTLAKE VILLAGE CONDOS	0.0000	0.0000	0.00	0.00	0.00	0.00	0.00	0.0	0.00
△ PLAT 9	17.8005	0.0000	5.04	5.92	0.00	0.00	28.7605	SEE AMENDED PLAT 9A	
△ PLAT 7B AMENDED	14.7624	7.4526	7.83	5.11	0.00	0.00	35.3550	SEE AMENDED PLAT 7C	
VILLAGE CENTER 1A	0.0000	0.0000	0.00	0.00	0.00	0.00	0.00	0.0	0.00
AMENDED EASTLAKE VILLAGE CONDOS	0.0000	0.0000	0.00	0.00	0.00	0.00	0.00	0.0	0.00
PLAT 9A AMENDED	17.8005	0.0000	5.04	5.92	0.00	0.00	28.7605	36	11,087.08
△ AMENDED PLAT 1A	12.61	22.17	2.26	5.23	26.0377	0.00	66.3277	SEE AMENDED PLAT 1	
DAYBREAK VIEW PARKWAY SUBDIVISION FROM PLAT A1 TO THE EAST FRONTAGE ROAD	0.0000	0.0000	1.36	0.00	0.00	0.00	* 1.36	0.0	0.00
APARTMENT VENTURE #1	0.0000	0.0000	1.30	1.14	0.00	0.00	* 2.44	0.0	0.00
PLAT 3C	0.0000	0.0000	0.84	0.00	0.00	0.00	0.84	0.0	0.00
DAYBREAK VIEW PARKWAY SUBDIVISION FROM EAST FRONTAGE ROAD TO IRMO SOUTH	0.0000	0.0000	1.11	0.04	0.00	0.00	1.15	0.0	0.00
△ COMMERCE PARK PLAT 1	0.0000	0.0000	0.19	0.22	0.00	0.00	0.41	0.0	0.00
COMMERCE PARK PLAT 2	0.0000	0.0000	0.47	0.00	0.00	0.00	* 0.47	0.0	0.00
PLAT 8A-1	0.0000	0.0000	0.00	0.00	0.00	0.00	0.00	2	740
PLAT 8A-2	0.0000	0.0000	0.00	0.00	0.00	0.00	0.00	0	0
VILLAGE 4A PLAT 1	2.1490	0.0000	1.49	0.00	0.00	0.00	3.6390	7	1,028.00
△ VILLAGE 4A PLAT 2	0.8623	0.0000	0.61	0.00	0.00	0.00	1.4723	SEE AMENDED VILLAGE 4A PLAT 2	
PLAT 8A-3	0.0000	0.0000	0.00	0.00	0.00	0.00	0.00	0	0
PLAT 8A-4	0.0000	0.0000	0.00	0.00	0.00	0.00	0.00	0	0
PLATS 8A-5 THRU 8A-9	0.0000	0.0000	0.00	0.00	0.00	0.00	0.00	0	0
PLAT 7C AMENDED	14.7624	7.3647	7.83	5.11	0.00	0.00	35.0671	35	10,037.21
AMENDED VILLAGE 4A PLAT 2	0.8623	0.0000	0.61	0.00	0.00	0.00	1.4723	3	709.76
EASTLAKE ELEMENTARY SCHOOL	0.0000	0.0000	0.00	0.00	0.00	0.00	0.00	0	0
COUPLER LINER PRODUCT #1	0.0000	0.0000	0.00	0.00	0.00	0.00	0.00	0	0
PLAT 3D	0.0336	0.0000	0.12	0.00	0.00	0.00	0.1336	2	493.14
AMENDED PLAT 3B-10	0.0000	0.0000	0.00	0.00	0.00	0.00	0.00	1	33.72
VCI DAYCARE	0.0000	0.0000	0.38	0.04	0.00	0.00	0.42	0	0
VCI CONDO SUBDIVISION	0.0000	0.0000	0.00	0.00	0.00	0.00	0.00	0	0
VILLAGE 4A PLAT 3	2.9531	0.0000	1.56	0.37	0.00	0.00	4.8831	3	1,283.96
BINGHAM CREEK PLAT	142.715	0.0000	0.00	0.00	0.00	0.00	142.715	0	0
11400/11VC SE COMMERCIAL #1	0.0000	0.0000	0.00	0.00	0.00	0.00	0.00	0	0
QUESTAR/VHWD PLAT	0.0000	0.0000	0.00	0.00	0.00	0.00	0.00	0	0
VILLAGE 4A MULTI FAMILY #1	1.05	0.0000	0.00	0.00	0.00	0.00	1.05	0	0
△ UNIVERSITY MEDICAL #1	0.0000	0.0000	0.41	0.00	0.00	0.00	0.41	SEE AMENDED UNIV MEDICAL #1	
△ PLAT 10A	0.766	0.0000	0.64	0.00	0.00	0.00	1.406	SEE AMENDED PLAT 10A	
△ VCI MULTI FAMILY #1	0.0903	0.0000	0.00	0.00	0.00	0.00	0.0903	SEE AMENDED VCI MULTI FAMILY #1	
AMENDED PLAT 10A	0.766	0.0000	0.64	0.00	0.00	0.00	1.406	2	1,291.32
△ GARDEN PARK CONDOMINIUMS, PHASE 1	0.0000	0.0000	0.00	0.00	0.00	0.00	0.00	0	0
△ GARDEN PARK CONDOMINIUMS, PHASE 3	0.0000	0.0000	0.00	0.00	0.00	0.00	0.00	0	0
△ PLAT 9B	0.0000	0.0000	0.00	0.00	0.00	0.00	0.00	0	0
△ PLAT 9C	-0.2014	0.0000	0.00	0.00	0.00	0.00	-0.2014	0	0
PLAT 3E	0.0251	0.0000	0.36	0.00	0.00	0.00	0.3851	1	309.00
AMENDED UNIVERSITY MEDICAL #1	0.0000	0.0000	0.26	0.22	0.00	0.00	0.48	0	0
SOUTH JORDAN PARKWAY 80A PLAT FROM SALT ROCK DRIVE TO IRMO WEST	0.0000	0.0000	1.21	0.00	0.00	0.00	1.21	0	0
PLAT 8C	0.0998	0.0000	0.00	0.00	0.00	0.00	0.0998	0	0
AMENDED VCI MULTI FAMILY #1	0.0903	0.0000	0.00	0.00	0.00	0.00	0.0903	3	412.58
VCI MULTI FAMILY #2A	0.110	0.0000	0.00	0.00	0.00	0.00	0.111	1	502.50
PLAT 9D	0.0000	0.0000	0.00	0.00	0.00	0.00	0.00	2	484.00
AMENDED PLAT 3E	0.0000	0.0000	0.00	0.00	0.00	0.00	0.00	0	0
PLAT 7D	0.0000	0.0000	0.00	0.00	0.00	0.00	0.00	0	0
VCI MULTI FAMILY #2B	0.3087	0.0000	0.00	0.00	0.00	0.00	0.3087	1	194.33
VILLAGE 4A PLAT 4	0.8077	0.0000	0.26	0.23	0.00	0.00	1.2977	2	718.52
VILLAGE 4A PLAT 5	1.5901	0.0000	0.68	0.00	0.00	0.00	2.2701	4	1,125.22

PLAT NUMBER	DAYBREAK PARK LOT AREA	DAYBREAK OPEN SPACE LOT AREA	COLLECTOR STREET PARK STRIP AREA	NON-COLLECTOR STREET PARK STRIP AREA	PARK AREA DEDICATED TO CITY	OPEN SPACE AREA DEDICATED TO CITY	TOTAL	NUMBER OF LANES	LINEAR FOOTAGE
PLAT 10B	0.00	0.00	0.20	0.09	0.0000	0.0000	0.29	0	0
PLAT 7E	0.00	0.00	0.00	0.00	0.0000	0.0000	0.00	0	0
PLAT 9F	0.00	0.00	0.00	0.00	0.0000	0.0000	0.00	0	0
PLAT 7F	0.00	0.00	0.00	0.00	0.0000	0.0000	0.00	0	0
VCI MULTI FAMILY #3	0.1297	0.00	0.00	0.00	0.0000	0.0000	0.1297	0	0
VILLAGE 4A MULTI FAMILY #2	0.00	0.00	0.00	0.00	0.0000	0.0000	0.00	0	0
△ PLAT 9G	-0.2921	0.00	0.00	0.00	0.0000	0.0000	-0.2921	6	1,309.42
PLAT 10C	1.0815	0.00	0.14	0.69	0.0000	0.0000	1.8718	4	1,097.20
PLAT 8D	0.00	0.00	0.00	0.00	0.0000	0.0000	0.00	0	0
PLAT 8B	0.00	0.00	0.00	0.00	0.0000	0.0000	0.00	0	0
PLAT 9H	0.00	0.00	0.00	0.00	0.0000	0.0000	0.00	0	0
VILLAGE 4 WEST PLAT 1	0.2552	0.00	2.02	0.48	0.0000	0.0000	2.7552	2	1,088.00
VCI MULTI FAMILY #4	0.00	0.00	0.00	0.00	0.0000	0.0000	0.00	0	0
VILLAGE 4 EAST PLAT 1	1.4911	0.00	0.00	0.86	0.0000	0.0000	2.3511	6	1524.61
VCI MULTI FAMILY #4A	0.3296	0.00	0.00	0.00	0.0000	0.0000	0.3296	0	0
PLAT 10D	0.3384	0.00	0.18	0.35	0.0000	0.0000	0.8664	6	924.04
VCI MULTI FAMILY #5	0.2651	0.00	0.00	0.00	0.0000	0.0000	0.2651	0	0
VILLAGE 4A PLAT 6	1.0020	0.00	0.99	0.31	0.0000	0.0000	2.3020	10	1,837.74
PLAT 10E	0.9735	0.00	1.31	0.51	0.0000	0.0000	2.7936	8	2,992.33
PLAT 9I	0.00	0.00	0.00	0.00	0.0000	0.0000	0.00	0	0
OQUIRSH LAKE PLAT	0.00	105.945	0.00	0.00	0.0000	0.0000	105.945	0	0
VILLAGE 4 WEST PLAT 2	0.2930	0.00	0.00	0.27	0.0000	0.0000	0.5630	2	891.76
VILLAGE 5 PLAT 1	0.00	0.00	0.58	0.00	0.0000	0.0000	0.58	0	0
△ PLAT 10F	6.7848	0.00	0.00	0.00	0.0000	0.0000	6.7848	0	0
VCI MULTI FAMILY #6	0.091	0.00	0.00	0.00	0.0000	0.0000	0.091	1	505.05
VILLAGE 5 PLAT 2	0.3984	0.00	0.13	0.72	0.0000	0.0000	1.2484	7	2,583.35
VILLAGE 5 PLAT 3	1.2995	0.00	0.22	1.11	0.0000	0.0000	2.5495	16	3,781.25
PLAT 10G	0.0000	0.00	0.33	0.29	0.0000	0.0000	0.6200	4	1209.13
VILLAGE 4 EAST CONDOMINIUM NO. 1 AMENDED	0.00	0.00	0.00	0.00	0.0000	0.0000	0.00	0	0
VILLAGE 4 EAST CONDOMINIUM NO. 2 AMENDED	0.00	0.00	0.00	0.00	0.0000	0.0000	0.00	0	0
VILLAGE 4 EAST PLAT 2	0.9964	0.00	0.00	0.66	0.0000	0.0000	0.9964	6	1524.61
VILLAGE 4 EAST PLAT 3	0.4098	0.00	0.00	0.21	0.0000	0.0000	0.6198	6	1524.61
VILLAGE 4A PLAT 7	0.0000	0.00	0.46	0.20	0.0000	0.0000	0.6600	1	150.00
COMMERCE PARK PLAT 3	0.00	0.00	0.00	0.00	0.0000	0.0000	0.00	0	0
VILLAGE 5 PLAT 4	3.5868	0.00	0.10	0.96	0.0000	0.0000	4.6468	19	3,532.99
VILLAGE 4A PLAT 8	0.3688	0.00	0.52	0.02	0.0000	0.0000	0.9088	6	1687.31
VILLAGE 5 MULTI FAMILY #1	0.0903	0.00	0.00	0.02	0.0000	0.0000	0.1103	4	164.21
VCI MULTI FAMILY #7	0.1485	0.00	0.00	0.04	0.0000	0.0000	0.1885	0	0
SOUTH STATION MULTI FAMILY #1	0.4972	0.00	0.00	0.00	0.0000	0.0000	0.4972	0	0
PLAT 10H	1.6574	0.00	1.17	0.99	0.0000	0.0000	3.8174	10	2672.92
S. JORDAN PKWAY, 80A DED. PLAT FROM 1560 WEST TO RT. VIEW CORN.	0.0000	0.00	2.60	0.00	0.0000	0.0000	2.6000	0	0
TOTALS	256.5586	180.3341	42.55	63.40	26.0377	0.0000	556.8804	344	48,370.33

- △ INFORMATION COMPILED BY ADDING ACREAGE ON A FINAL PLAT PREPARED BY STANTEC.
- △ THESE PLATS WERE NOT ADDED IN THE TOTAL COLUMN AT THE BOTTOM OF THE TABLE. THESE PLATS HAVE BEEN AMENDED AND THE AMENDED PLAT WAS ADDED TO THE TOTAL AT THE BOTTOM OF THE TABLE.
- △ THESE PLATS WERE NOT ADDED IN THE TOTAL COLUMN AT THE BOTTOM OF THE TABLE. THIS PLAT HAS BEEN AMENDED THREE TIMES AND ONLY THE LAST AMENDED PLAT (PLAT 7C) WAS ADDED TO THE TOTAL AT THE BOTTOM OF THE TABLE.
- △ INFORMATION SHOWN ON A FINAL PLAT PREPARED BY DOMINION.
- △ INFORMATION SHOWN ON A FINAL PLAT PREPARED BY FOCUS ENGINEERING AND SURVEYING.
- △ THIS PLAT VACATED FIVE (5) P-LOTS WHICH WERE SUBTRACT FROM THE TABLE.
- △ THIS PLAT