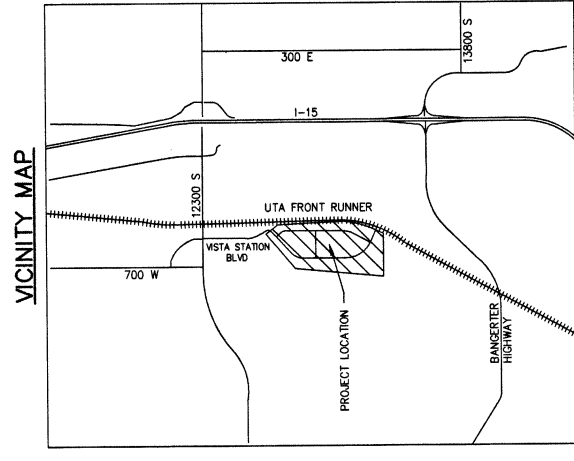
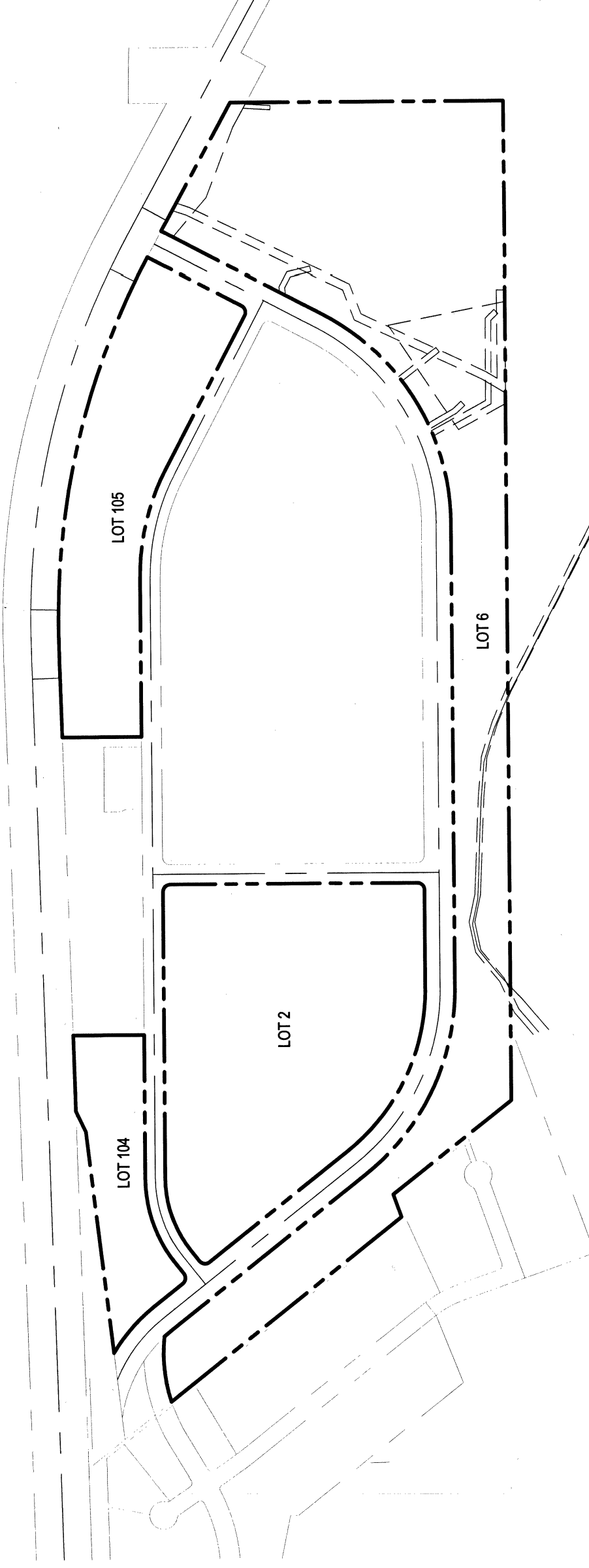
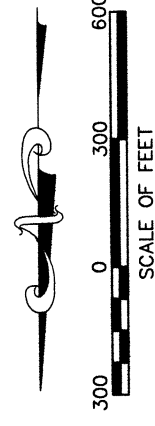


DRAPER TOD SECOND AMENDMENT

(AMENDING LOTS 2 AND 6 DRAPER TOD SUBDIVISION ALSO AMENDING LOTS 104 AND 105 DRAPER TOD AMENDING LOTS 3, 4 AND 5)
A SUBDIVISION LOCATED IN THE WEST HALF OF SECTION 36, TOWNSHIP 3 S, RANGE 1 W, SALT LAKE BASE AND MERIDIAN,
DRAPER CITY, SALT LAKE COUNTY, UTAH

2013



LEGAL DESCRIPTIONS

LOT 2 OF DRAPER TOD PLAT AS RECORDED ENTRY NO. 1128183, NOVEMBER 18, 2011, AS AMENDED WITH THIS PLAN, MORE PARTICULARLY DESCRIBED AS FOLLOWS:
BEGINNING AT A POINT WHICH IS NORTH 70°20'E 185.93 FEET AND EAST 306.01 FEET FROM THE WEST QUARTER CORNER OF SECTION 36, TOWNSHIP 3 SOUTH, RANGE 1 WEST, SALT LAKE BASE AND MERIDIAN; THENCE NORTH 70°20'E 333.08 FEET TO THE RIGHT CHORD BEARING NORTH 28°49'30"E A DISTANCE OF 650.33 FEET; THENCE NORTH 13°37'44"E 637.43 FEET; THENCE SOUTHWESTERLY 278.60 FEET ALONG THE ARC OF A 2600 FOOT RADIUS CURVE TO THE RIGHT, CHORD BEARING S19°11'08"E A DISTANCE OF 273.42 FEET; THENCE SOUTH 100°56'00"E 416.00 FEET TO THE POINT OF BEGINNING. THIS LOT CONTAINS 23.083 ACRES (1,004,652 SQUARE FEET)

LOT 6

LOT 6 OF DRAPER TOD PLAT AS RECORDED ENTRY NO. 1128183, NOVEMBER 18, 2011, AS AMENDED WITH THIS PLAN, MORE PARTICULARLY DESCRIBED AS FOLLOWS:
BEGINNING AT THE SOUTHWEST CORNER OF SECTION 36, TOWNSHIP 3 SOUTH, RANGE 1 WEST, SALT LAKE BASE AND MERIDIAN, MARKED WITH A 3" COUNTY SURVEYOR CORNER; THENCE NORTH 70°20'E 185.93 FEET TO THE WEST QUARTER CORNER OF SAID SECTION 36, MARKED WITH A 3" COUNTY SURVEYOR CORNER; THENCE NORTH 70°20'E 333.08 FEET TO THE RIGHT CHORD BEARING NORTH 28°49'30"E A DISTANCE OF 650.33 FEET; THENCE NORTH 13°37'44"E 637.43 FEET; THENCE SOUTHWESTERLY 278.60 FEET ALONG THE ARC OF A 2600 FOOT RADIUS CURVE TO THE RIGHT, CHORD BEARING S19°11'08"E A DISTANCE OF 273.42 FEET; THENCE SOUTH 100°56'00"E 416.00 FEET TO THE POINT OF BEGINNING. THIS LOT CONTAINS 23.083 ACRES (1,004,652 SQUARE FEET)

LOT 104

LOT 104 OF DRAPER TOD AMENDING LOTS 3, 4 & 5 AS RECORDED ENTRY NO. 11591484, MARCH 2013, PAGE 37, AND AS AMENDED WITH THIS PLAN, MORE PARTICULARLY DESCRIBED AS FOLLOWS:
BEGINNING AT A POINT WHICH IS NORTH 70°20'E 700.79 FEET AND EAST 1317.37 FEET FROM THE WEST QUARTER CORNER OF SECTION 36, TOWNSHIP 3 SOUTH, RANGE 1 WEST, SALT LAKE BASE AND MERIDIAN; THENCE NORTH 70°20'E 185.93 FEET TO THE WEST QUARTER CORNER OF SAID SECTION 36, MARKED WITH A 3" COUNTY SURVEYOR CORNER; THENCE NORTH 70°20'E 333.08 FEET TO THE RIGHT CHORD BEARING NORTH 28°49'30"E A DISTANCE OF 650.33 FEET; THENCE NORTH 13°37'44"E 637.43 FEET; THENCE SOUTHWESTERLY 278.60 FEET ALONG THE ARC OF A 2600 FOOT RADIUS CURVE TO THE RIGHT, CHORD BEARING S19°11'08"E A DISTANCE OF 273.42 FEET; THENCE SOUTH 100°56'00"E 416.00 FEET TO THE POINT OF BEGINNING. THIS LOT CONTAINS 40.085 ACRES (1,746,098 SQUARE FEET)

LOT 105

LOT 105 OF DRAPER TOD AMENDING LOTS 3, 4 & 5 AS RECORDED ENTRY NO. 11591484, MARCH 2013, PAGE 37, AND AS AMENDED WITH THIS PLAN, MORE PARTICULARLY DESCRIBED AS FOLLOWS:
BEGINNING AT THE WEST QUARTER CORNER OF SECTION 36, TOWNSHIP 3 SOUTH, RANGE 1 WEST, SALT LAKE BASE AND MERIDIAN; THENCE NORTH 70°20'E 185.93 FEET TO THE WEST QUARTER CORNER OF SAID SECTION 36, MARKED WITH A 3" COUNTY SURVEYOR CORNER; THENCE NORTH 70°20'E 333.08 FEET TO THE RIGHT CHORD BEARING NORTH 28°49'30"E A DISTANCE OF 650.33 FEET; THENCE NORTH 13°37'44"E 637.43 FEET; THENCE SOUTHWESTERLY 278.60 FEET ALONG THE ARC OF A 2600 FOOT RADIUS CURVE TO THE RIGHT, CHORD BEARING S19°11'08"E A DISTANCE OF 273.42 FEET; THENCE SOUTH 100°56'00"E 416.00 FEET TO THE POINT OF BEGINNING. THIS LOT CONTAINS 12.841 ACRES (559,359 SQUARE FEET)

SURVEYOR'S CERTIFICATE

I, Brian D. Arnold, do hereby certify that I am a Professional Land Surveyor, and that I hold Certificate No. 187007 as prescribed by the Laws of the State of Utah. I further certify that the Owners I have made a Survey of the Parcel of Land shown on this plan, and that the same has been correctly surveyed and staked on the ground as shown on this Plan.

DRAPER TOD SECOND AMENDMENT

APPROVED THIS 12th DAY OF December, 2013
Date
Brian D. Arnold
P.L.S. 187007

CORPORATE ACKNOWLEDGMENT

STATE OF UTAH }
COUNTY OF SALT LAKE }
ON THIS 24th DAY OF December, 2013, PERSONALLY APPEARED BEFORE ME, STEPHANIE EBER-JANSEN, who being by ME DULY SWORN OR AFFIRMED, DID SAY THAT JEFFREY M. VITEX IS THE MANAGING MEMBER OF DRAPER HOLDINGS ASSOCIATES, LLC, A UTAH LIMITED LIABILITY COMPANY, WHO IS THE MANAGING MEMBER OF DRAPER HOLDINGS, LLC, A UTAH LIMITED LIABILITY COMPANY, THE HEREBY OWNER'S DEDICATION WAS SIGNED IN BEHALF OF SAID DRAPER HOLDINGS, LLC, AND THE SAID DRAPER HOLDINGS, LLC DECIDED THE SAME.
NOTARY PUBLIC: Stephanie Eber-Jansen
RESIDING IN: SALT LAKE CITY
MY COMMISSION EXPIRES: August 3, 2018

OWNERS' DEDICATION

Know all men by these presents that I/We, the undersigned owner of the herein described premises, do hereby dedicate to the public the easements and rights shown on this plat and name said plat DRAPER TOD SECOND AMENDMENT and do hereby dedicate, grant and convey to Draper City, Utah: (1) all those parts or portions of said tract of land designated as streets, the same to be used as public thoroughfares forever; (2) those certain public utility and drainage easements as shown herein, the same to be used for the installation, maintenance, and operation of public utility service lines and easements, or if similar designation, in witness whereof, we have here unto set our hands this 24th day of December, A.D., 2013.
Draper Holdings, LLC
By: Draper Holdings Associates, LLC
By: Jeffrey M. Vitex, Managing Member

SEWER DISTRICT NOISE

THE SIGNATURE OF SOUTH VALLEY SEWER DISTRICT ON THESE PAGES 242-243, A BLANKET EASEMENT OF EASEMENT IS THE PROPERTY OF SAID DISTRICT AND IS NOT TO BE TRANSFERRED TO ANY OTHER PARTY WITHOUT THE WRITTEN CONSENT OF SAID DISTRICT. THE SIGNATURE OF SAID DISTRICT ON THESE PAGES 242-243, A BLANKET EASEMENT OF EASEMENT IS THE PROPERTY OF SAID DISTRICT AND IS NOT TO BE TRANSFERRED TO ANY OTHER PARTY WITHOUT THE WRITTEN CONSENT OF SAID DISTRICT.

ROCKY MOUNTAIN POWER COMPANY EASEMENT

REFERENCE BOOK 71 OF DEEDS PAGE 188, BOOK BY OF DEEDS PAGES 242-243, A BLANKET EASEMENT OF EASEMENT IS THE PROPERTY OF SAID DISTRICT AND IS NOT TO BE TRANSFERRED TO ANY OTHER PARTY WITHOUT THE WRITTEN CONSENT OF SAID DISTRICT.

SALT LAKE COUNTY FLOOD CONTROL

APPROVED THIS 24th DAY OF December, 2013, BY SOUTH VALLEY SEWER DISTRICT.
APPROVED THIS 24th DAY OF December, 2013, BY DRAPER CITY WATER.
SCOTT BARKER, ENGINEERING AND FLOOD CONTROL DIVISION DIRECTOR

DRAPER CITY WATER

APPROVED THIS 24th DAY OF December, 2013, BY DRAPER CITY WATER.
APPROVED THIS 24th DAY OF December, 2013, BY DRAPER CITY WATER.
SCOTT BARKER, ENGINEERING AND FLOOD CONTROL DIVISION DIRECTOR

DRAPER CITY HEALTH DEPARTMENT

APPROVED THIS 16th DAY OF December, 2013.
I HEREBY CERTIFY THAT THIS OFFICE HAS EXAMINED THIS PLAN AND IT IS CORRECT IN ACCORDANCE WITH INFORMATION ON FILE IN THIS OFFICE.
Jeremy Roberts
Draper City Engineer

PLANNING COMMISSION

APPROVED THIS 9th DAY OF June, 2014 BY THE CITY OF DRAPER PLANNING COMMISSION.
Judson W. Hill
Chairman, Draper City Planning and Zoning Commission

SOUTH VALLEY SEWER DISTRICT

APPROVED THIS 12th DAY OF December, 2013, BY SOUTH VALLEY SEWER DISTRICT.
APPROVED THIS 12th DAY OF December, 2013, BY SOUTH VALLEY SEWER DISTRICT.
SOUTH VALLEY SEWER DISTRICT, DISTRICT MANAGER

NOTE: THIS AMENDMENT IS SUBJECT TO ALL OF THE PROVISIONS OF THE DRAPER TOD SECOND AMENDMENT PLAT, AMENDING PLAT, OR SAID DRAPER TOD, AS NOTED ABOVE. THIS AMENDMENT DOES NOT ALTER THE RIGHTS, COVENANTS, CONDITIONS, RESTRICTIONS AND OTHER MATTERS OF RECORD.

UTILITIES EASEMENT APPROVALS	DATE
Rocky Mountain Power	12/11/13
South Valley Sewer District	12/19/13
Draper City Water	12/11/13
Draper City Health Department	12/11/13
City of Draper Planning Commission	12/11/13
City of Draper	12/11/13

DRAPER CITY WATER	APPROVED THIS 24th DAY OF December, 2013, BY DRAPER CITY WATER.
DRAPER CITY HEALTH DEPARTMENT	APPROVED THIS 16th DAY OF December, 2013.
PLANNING COMMISSION	APPROVED THIS 9th DAY OF June, 2014 BY THE CITY OF DRAPER PLANNING COMMISSION.
SOUTH VALLEY SEWER DISTRICT	APPROVED THIS 12th DAY OF December, 2013, BY SOUTH VALLEY SEWER DISTRICT.

DRAPER CITY WATER	APPROVED THIS 24th DAY OF December, 2013, BY DRAPER CITY WATER.
DRAPER CITY HEALTH DEPARTMENT	APPROVED THIS 16th DAY OF December, 2013.
PLANNING COMMISSION	APPROVED THIS 9th DAY OF June, 2014 BY THE CITY OF DRAPER PLANNING COMMISSION.
SOUTH VALLEY SEWER DISTRICT	APPROVED THIS 12th DAY OF December, 2013, BY SOUTH VALLEY SEWER DISTRICT.

DRAPER CITY WATER	APPROVED THIS 24th DAY OF December, 2013, BY DRAPER CITY WATER.
DRAPER CITY HEALTH DEPARTMENT	APPROVED THIS 16th DAY OF December, 2013.
PLANNING COMMISSION	APPROVED THIS 9th DAY OF June, 2014 BY THE CITY OF DRAPER PLANNING COMMISSION.
SOUTH VALLEY SEWER DISTRICT	APPROVED THIS 12th DAY OF December, 2013, BY SOUTH VALLEY SEWER DISTRICT.

DRAPER CITY WATER	APPROVED THIS 24th DAY OF December, 2013, BY DRAPER CITY WATER.
DRAPER CITY HEALTH DEPARTMENT	APPROVED THIS 16th DAY OF December, 2013.
PLANNING COMMISSION	APPROVED THIS 9th DAY OF June, 2014 BY THE CITY OF DRAPER PLANNING COMMISSION.
SOUTH VALLEY SEWER DISTRICT	APPROVED THIS 12th DAY OF December, 2013, BY SOUTH VALLEY SEWER DISTRICT.

P S O M A S	SCALE: 1" = 200'
DATE: 12-03-2013	CHECKED: BDA
DESIGNED: TUM	DRAWN: BDA

DRAPER CITY WATER	APPROVED THIS 24th DAY OF December, 2013, BY DRAPER CITY WATER.
DRAPER CITY HEALTH DEPARTMENT	APPROVED THIS 16th DAY OF December, 2013.
PLANNING COMMISSION	APPROVED THIS 9th DAY OF June, 2014 BY THE CITY OF DRAPER PLANNING COMMISSION.
SOUTH VALLEY SEWER DISTRICT	APPROVED THIS 12th DAY OF December, 2013, BY SOUTH VALLEY SEWER DISTRICT.

DRAPER CITY WATER	APPROVED THIS 24th DAY OF December, 2013, BY DRAPER CITY WATER.
DRAPER CITY HEALTH DEPARTMENT	APPROVED THIS 16th DAY OF December, 2013.
PLANNING COMMISSION	APPROVED THIS 9th DAY OF June, 2014 BY THE CITY OF DRAPER PLANNING COMMISSION.
SOUTH VALLEY SEWER DISTRICT	APPROVED THIS 12th DAY OF December, 2013, BY SOUTH VALLEY SEWER DISTRICT.

DRAPER CITY WATER	APPROVED THIS 24th DAY OF December, 2013, BY DRAPER CITY WATER.
DRAPER CITY HEALTH DEPARTMENT	APPROVED THIS 16th DAY OF December, 2013.
PLANNING COMMISSION	APPROVED THIS 9th DAY OF June, 2014 BY THE CITY OF DRAPER PLANNING COMMISSION.
SOUTH VALLEY SEWER DISTRICT	APPROVED THIS 12th DAY OF December, 2013, BY SOUTH VALLEY SEWER DISTRICT.

DRAPER CITY WATER	APPROVED THIS 24th DAY OF December, 2013, BY DRAPER CITY WATER.
DRAPER CITY HEALTH DEPARTMENT	APPROVED THIS 16th DAY OF December, 2013.
PLANNING COMMISSION	APPROVED THIS 9th DAY OF June, 2014 BY THE CITY OF DRAPER PLANNING COMMISSION.
SOUTH VALLEY SEWER DISTRICT	APPROVED THIS 12th DAY OF December, 2013, BY SOUTH VALLEY SEWER DISTRICT.

DESIGNED	BDA
DRAWN	TDM
CHECKED	BDA

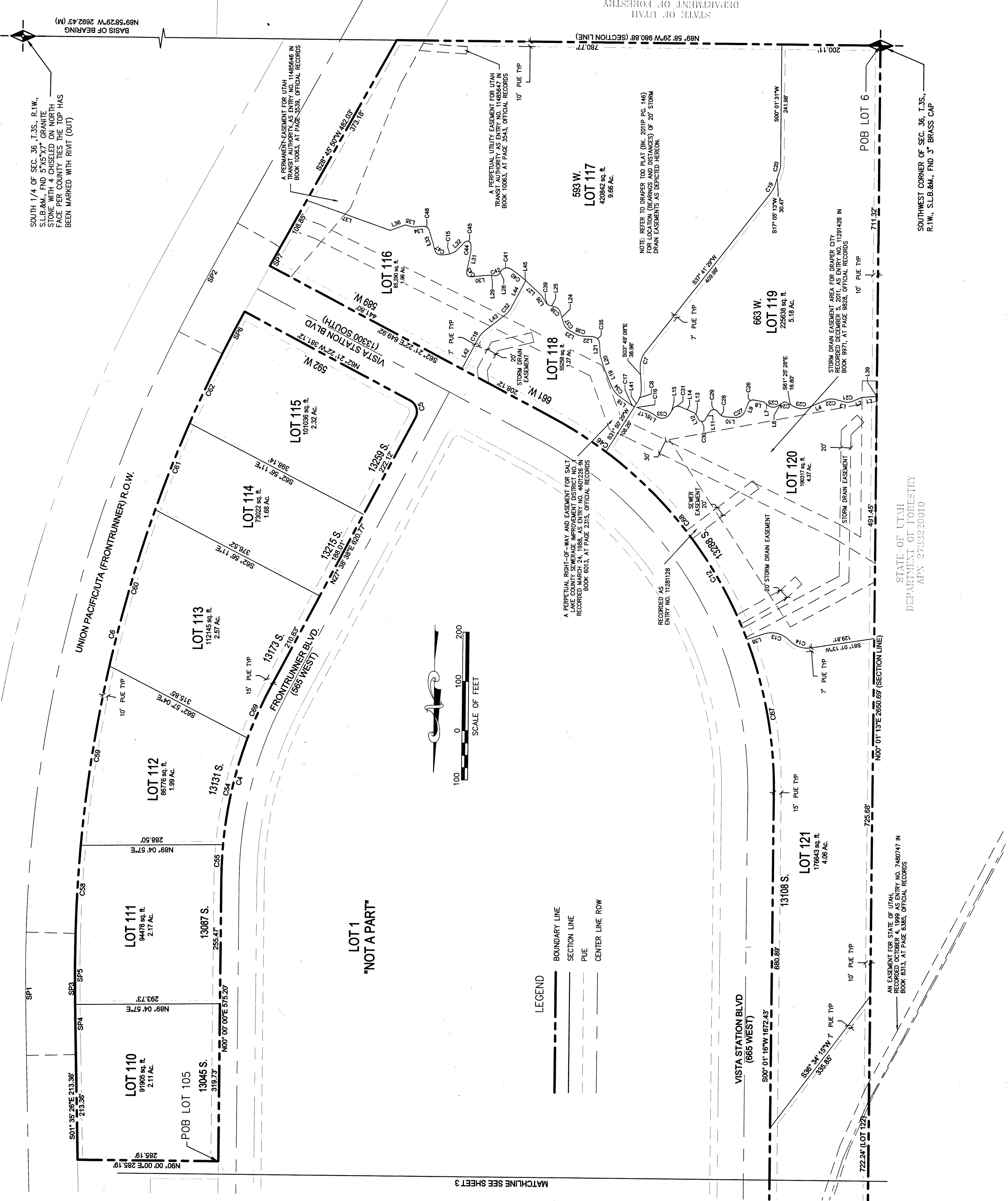
P S O M A S
4179 Riverview Road, Suite 200
Salt Lake City, Utah 84123
(801) 270-5777 (801) 270-5782 (FAX)

DRAPER TOD SECOND AMENDMENT
DRAPER, UTAH

DATE	12-03-2013
PROJECT NUMBER	BDHL010100
SCALE	1" = 100'
PROJECT	

Line Table				Curve Table			
LINE	LENGTH	DIRECTION	CHORD	CHORD	RADIUS	DELTA	DISTANCE
L1	30.37	N89°52'27"E	462.07	462.07	271.98	117°46'10"E	106.07
L2	19.32	N89°15'17"E	43.84	43.84	26.07	117°31'24"E	30.77
L3	18.82	S75°33'37"E	123.46	123.46	75.51	121°35'12"E	121.52
L4	36.82	N89°28'47"E	56.32	56.32	33.97	117°36'11"E	30.44
L5	10.07	N89°04'21"E	31.12	31.12	18.50	117°36'11"E	16.87
L6	10.07	N89°04'21"E	31.12	31.12	18.50	117°36'11"E	16.87
L7	10.07	N89°04'21"E	31.12	31.12	18.50	117°36'11"E	16.87
L8	10.07	N89°04'21"E	31.12	31.12	18.50	117°36'11"E	16.87
L9	10.07	N89°04'21"E	31.12	31.12	18.50	117°36'11"E	16.87
L10	21.29	N89°30'30"E	32.12	32.12	18.50	117°36'11"E	16.87
L11	19.22	N89°14'57"E	28.97	28.97	16.50	117°36'11"E	14.87
L12	4.89	S83°51'12"E	7.49	7.49	4.52	117°36'11"E	4.17
L13	11.11	S83°51'12"E	18.50	18.50	10.50	117°36'11"E	9.87
L14	30.39	S83°51'12"E	50.00	50.00	28.50	117°36'11"E	26.87
L15	15.09	N89°18'09"E	23.50	23.50	13.50	117°36'11"E	12.87
L16	17.67	S87°49'15"E	28.97	28.97	16.50	117°36'11"E	14.87
L17	25.87	S87°49'15"E	43.84	43.84	26.07	117°36'11"E	24.17
L18	24.15	S84°02'32"E	39.32	39.32	22.50	117°36'11"E	21.87
L19	41.07	S82°47'22"E	66.32	66.32	36.50	117°36'11"E	34.87
L20	25.17	S19°42'54"E	24.49	24.49	14.00	117°36'11"E	13.87
L21	25.31	S83°41'28"E	16.87	16.87	9.50	117°36'11"E	9.17
L22	19.82	S87°32'21"E	21.46	21.46	12.00	117°36'11"E	11.67
L23	18.81	S89°31'40"E	18.27	18.27	10.50	117°36'11"E	10.17
L24	23.94	S19°52'06"E	19.79	19.79	11.00	117°36'11"E	10.67
L25	12.49	S19°52'06"E	10.50	10.50	6.00	117°36'11"E	5.67
L26	14.11	N21°14'03"W	14.72	14.72	8.50	117°36'11"E	8.17
L27	44.15	S17°02'59"E	73.73	73.73	41.00	117°36'11"E	39.67
L28	7.67	N37°14'29"E	12.50	12.50	7.00	117°36'11"E	6.67
L29	13.37	S89°14'13"E	23.50	23.50	13.00	117°36'11"E	12.67
L30	35.39	N89°44'13"E	56.32	56.32	31.00	117°36'11"E	29.67
L31	32.34	S11°15'19"W	16.87	16.87	9.50	117°36'11"E	9.17
L32	25.32	N41°18'42"E	18.50	18.50	10.50	117°36'11"E	10.17
L33	44.31	S17°49'42"E	73.73	73.73	41.00	117°36'11"E	39.67
L34	23.94	N89°36'02"E	19.79	19.79	11.00	117°36'11"E	10.67
L35	15.72	S14°22'27"E	15.00	15.00	8.50	117°36'11"E	8.17
L36	32.39	N89°17'16"E	50.00	50.00	28.50	117°36'11"E	26.87
L37	17.91	S19°42'42"E	17.00	17.00	9.50	117°36'11"E	9.17
L38	38.22	S17°22'07"W	63.00	63.00	33.50	117°36'11"E	32.17
L39	10.81	N89°55'29"E	18.50	18.50	10.50	117°36'11"E	10.17
L40	50.39	S87°38'39"W	83.00	83.00	44.00	117°36'11"E	42.67
L41	81.94	S87°38'39"W	132.00	132.00	70.00	117°36'11"E	68.67
L42	1.69	S47°09'59"E	1.69	1.69	1.00	117°36'11"E	1.67
L43	67.39	S55.00°	113.19	113.19	60.00	117°36'11"E	61.82
L44	179.22	S74.73°	274.73	274.73	144.00	117°36'11"E	142.36
L45	389.18	S74.73°	646.39	646.39	344.00	117°36'11"E	342.00
L46	339.27	S74.73°	563.39	563.39	300.00	117°36'11"E	298.00
L47	198.07	S74.73°	355.59	355.59	188.00	117°36'11"E	186.00
L48	156.74	S74.73°	274.73	274.73	144.00	117°36'11"E	142.36
L49	317.38	S53.00°	563.39	563.39	300.00	117°36'11"E	298.00
L50	462.09	S53.00°	830.00	830.00	440.00	117°36'11"E	426.00
L51	113.19	S53.00°	202.49	202.49	108.00	117°36'11"E	106.00

SPINAL	LENGTH	RADIUS	A	OFFSET
SP1	250.00	2064.73	646.39	0.0
SP2	250.00	2064.73	646.39	0.0
SP3	246.64	2744.73	714.00	-100.00
SP4	101.77	2744.73	714.00	-100.00
SP5	143.87	2744.73	714.00	-100.00
SP6	96.65	2744.73	714.00	-100.00
SP7	42.37	2744.73	714.00	-100.00



MATCHLINE SEE SHEET 3

SOUTH 1/4 OF SEC. 36, T.3S., R.1W., S.L.B.M., AND 5'x5'x7' GRANITE S.L.B.M. AND 5'x5'x7' GRANITE FACE PLY CORNER MARKERS ON NORTH FACE OF COUNTY ROAD 100' HAS BEEN MARKED WITH PVI (OUT)

BASE OF BEARING (N) 89°52'27" W 2892.43'

A PERPETUAL RIGHT-OF-WAY AND EASEMENT FOR SALT WATER TREATMENT PLANT IMPROVEMENT DISTRICT NO. 4 RECORDED IN PUBLIC RECORDS BOOK 8013, AT PAGE 2315, OPTICAL RECORDS

A PERPETUAL UTILITY EASEMENT FOR SALT WATER TREATMENT PLANT IMPROVEMENT DISTRICT NO. 4 RECORDED IN PUBLIC RECORDS BOOK 10063, AT PAGE 3538, OPTICAL RECORDS

NOTE: REFER TO DRAWING 100 PLAT (B.L. 2010 PL. 146) FOR ADDITIONAL INFORMATION REGARDING DRAIN EASEMENTS AS DEPICTED HEREON.

RECORDED AS ENTRY NO. 1128128

AN EASEMENT FOR STATE OF UTAH, RECORDED IN PUBLIC RECORDS AS ENTRY NO. 2604717 IN BOOK 8013, AT PAGE 3485, OPTICAL RECORDS

SOUTHWEST CORNER OF SEC. 36, T.3S., R.1W., S.L.B.M., AND 3' BRASS CAP

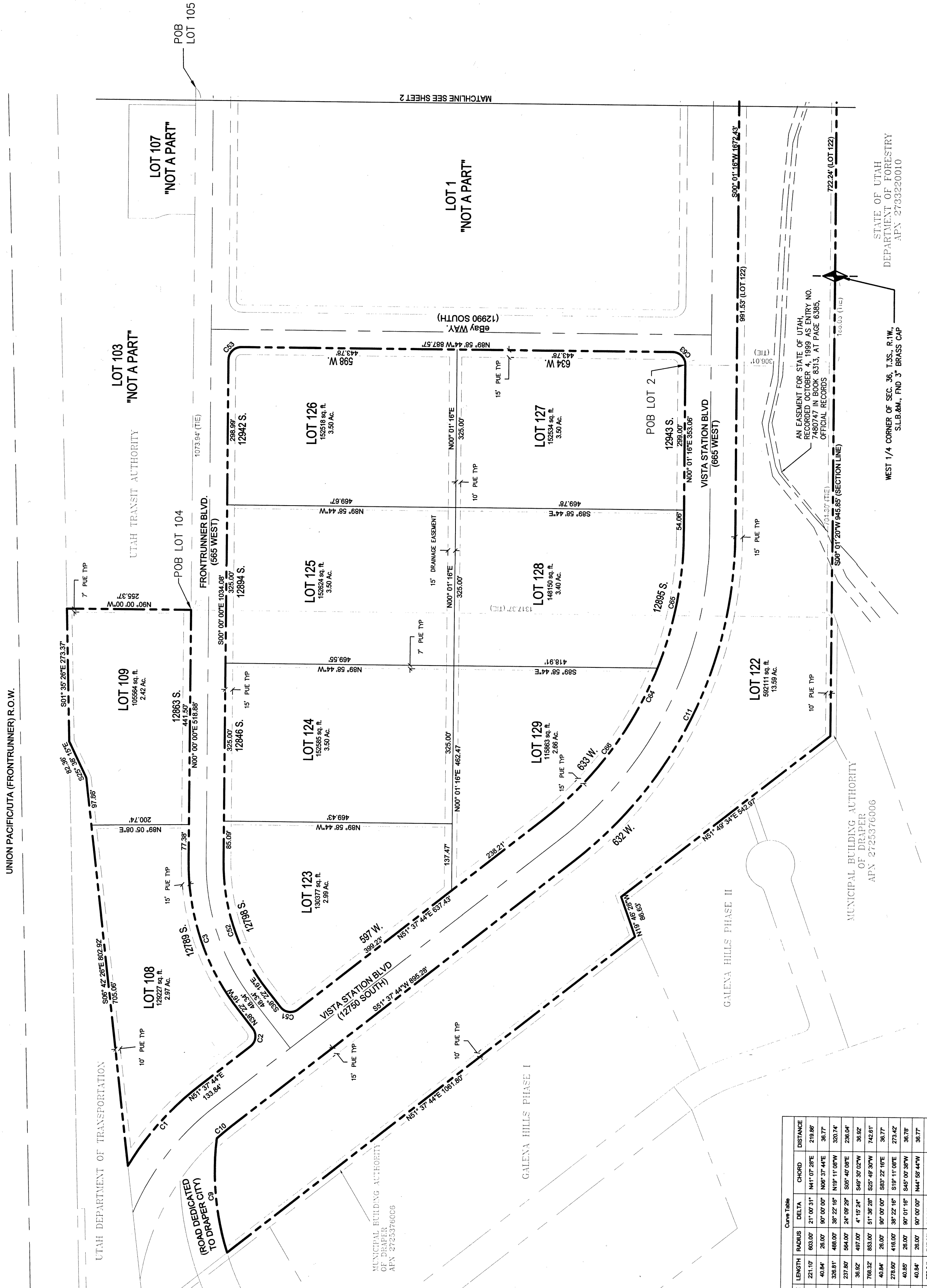
STATE OF UTAH
DEPARTMENT OF FORESTRY
APN: 2732220010

APN: 2732220010

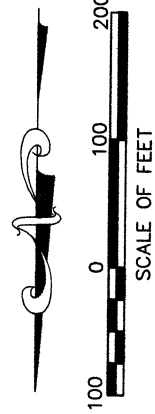
DRAPER TOD SECOND AMENDMENT
 DRAPER, UTAH

P S O M A S
 4179 Riverview Road, Suite 200
 Salt Lake City, Utah 84123
 (801) 270-5777 (801) 270-5782 (FAX)

DESIGNED	BDA
CHECKED	BDA



CURVE	Curve Data		
	LENGTH	RADIUS	DELTA
C1	221.07	603.00	21° 00' 31"
C2	40.84	26.00	80° 00' 00"
C3	326.81	488.00	38° 22' 45"
C4	237.80	564.00	24° 09' 20"
C5	36.82	487.00	4° 15' 24"
C6	766.32	853.00	51° 38' 20"
C7	40.84	26.00	80° 00' 00"
C8	276.00	418.00	38° 22' 45"
C9	40.84	26.00	80° 00' 00"
C10	672.84	747.00	51° 38' 20"
C11	277.27	747.00	21° 15' 00"
C12	386.57	747.00	30° 22' 29"



LEGEND
 BOUNDARY LINE
 SECTION LINE
 PUE
 CENTER LINE ROW

STATE OF UTAH
 DEPARTMENT OF INDUSTRY
 APN: 2732220010
 WEST 1/4 CORNER OF SEC. 18, T.3S., R.1W.,
 SLEDAH, TR. 3 BRASS CAP

AN EASEMENT FOR STATE OF UTAH,
 COUNTY OF DRAPER, UTAH, TR. 3, R. 1W., T. 3S.,
 7480747 IN BOOK 8313, AT PAGE 6385,
 OFFICIAL RECORDS

MUNICIPAL BUILDING AUTHORITY
 APN: 2725376006

UTAH TRANSIT AUTHORITY
 APN: 2732220010

UNION PACIFIC (FRONTRUNNER) R.O.W.

UTAH DEPARTMENT OF TRANSPORTATION

MUNICIPAL BUILDING AUTHORITY
 CITY OF DRAPER,
 APN: 2725376006

GALENA HILLS PHASE II

GALENA HILLS PHASE I

MATCHLINE SEE SHEET 2