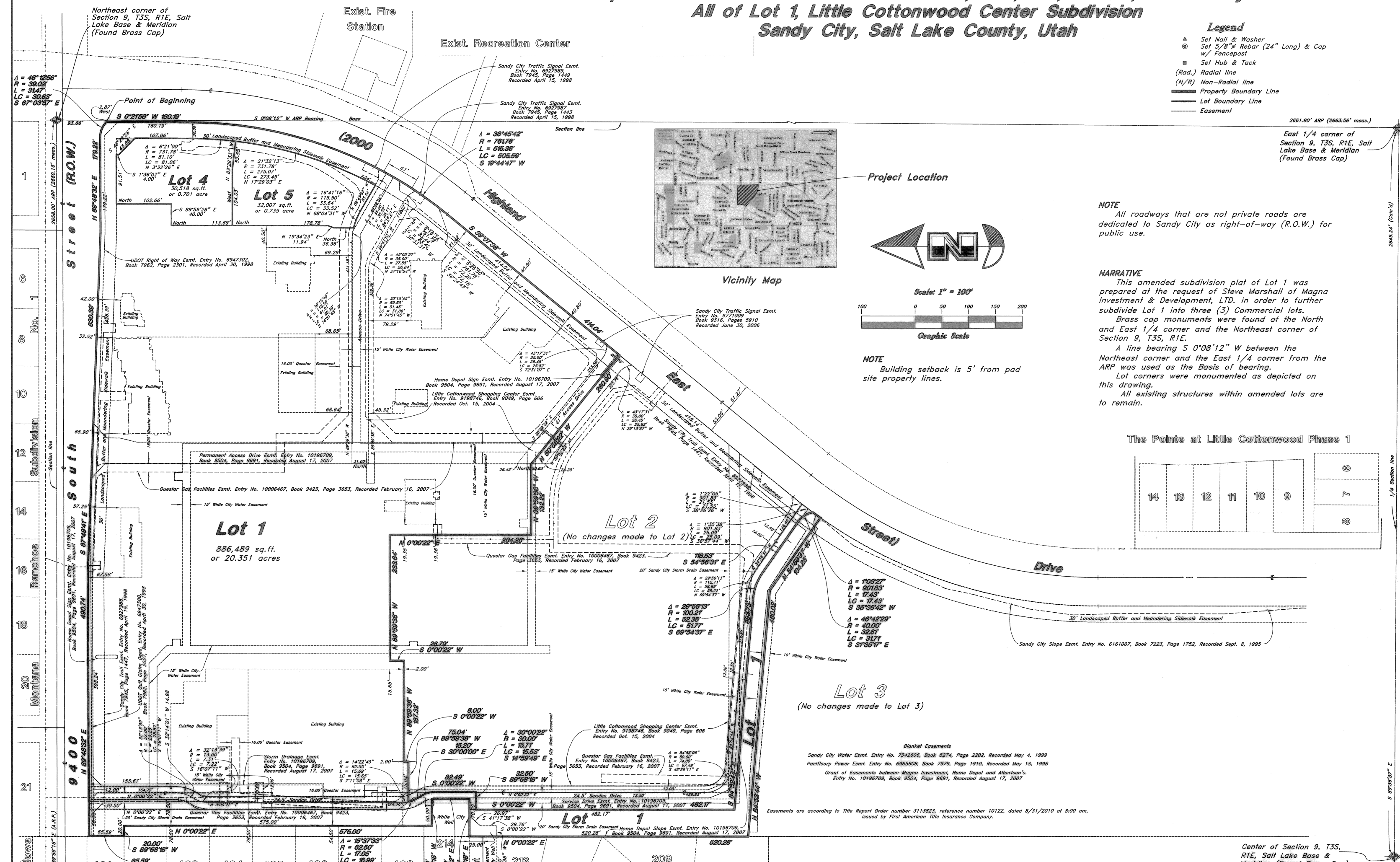


Little Cottonwood Center Subdivision - First Amendment

A part of the Northeast 1/4 of Section 9, T3S, R1E, SLB&M, U.S. Survey

All of Lot 1, Little Cottonwood Center Subdivision
Sandy City, Salt Lake County, Utah



BOUNDARY DESCRIPTION
A part of the Northeast Quarter of Section 9, Township 3 South, Range 1 East, Salt Lake Base and Meridian, U.S. Survey:
All of Lot 1, Little Cottonwood Center Subdivision in Sandy City, Salt Lake County, Utah according to the official plat thereof, being more particularly described as follows:
Beginning at a point on the West Right of Way line of 2000 East Street, which is 93.56 feet South 0°08'12" West along the East line of said Quarter Section and 2.87 feet West from the Northeast corner of said Quarter Section; running thence three (3) courses along said West Right of Way line as follows: South 0°21'56" West 160.19 feet to a point of curvature; Southwesterly along the arc of a 761.78 foot radius curve to the right a distance of 515.36 feet (Central Angle equals 38°45'42" and Long Chord bears South 19°44'47" West 505.59 feet) to a point of tangency and South 39°07'38" West 414.04 feet; thence North 50°52'22" West 260.90 feet; thence North 89°59'38" West 132.22 feet; thence North 0°00'22" East 264.26 feet; thence North 89°59'38" West 233.64 feet; thence South 0°00'22" West 26.79 feet; thence North 89°59'38" West 182.32 feet; thence South 0°00'22" West 8.00 feet; thence North 89°59'38" West 75.04 feet; Southeasterly along the arc of a 62.50 foot radius curve to the left a distance of 17.05 feet (Center radius bears North 75°37'33" East, Central Angle equals 15°37'33" and Long Chord bears South 22°11'14" East 16.99 feet) to a point of tangency; thence Southwesterly along the arc of a 30.00 foot radius curve to the right a distance of 15.71 feet (Central Angle equals 30°00'22" and Long Chord bears South 14°59'49" East 15.53 feet) to a point of tangency; thence South 0°00'22" West 82.43 feet; thence South 89°59'18" West 32.50 feet; thence South 0°00'22" West 482.17 feet; thence South 84°52'44" East 393.73 feet to a point of curvature; thence Southeasterly along the arc of a 100.21 foot radius curve to the right a distance of 52.36 feet (Central Angle equals 29°56'13" and Long Chord bears South 89°54'37" East 51.77 feet) to a point of tangency; thence South 54°56'31" East 116.53 feet to a point of curvature; thence Southeasterly along the arc of a 40.00 foot radius curve to the right a distance of 32.61 feet (Central Angle equals 46°42'29" and Long Chord bears South 31°35'17" East 31.71 feet) to said West Right of Way line of 2000 East Street; thence Southwesterly along the arc of a 901.63 foot radius curve to the left a distance of 17.43 feet (Central Angle equals 1°06'27" and Long Chord bears South 35°36'42" West 17.43 feet) along said West Right of Way line; thence North 54°56'31" West 164.25 feet; thence North 84°52'44" West 460.02 feet to the East boundary line of Ski Haven Estates No. 2, Sandy City, Salt Lake County, Utah; thence North 0°00'22" East 520.28 feet along said East boundary line to the South Property line of White City Water Company, Inc.; thence three (3) courses along the South, East and North Property line of said White City Water Company, Inc. as follows: North 89°58'18" East 70.00 feet; North 0°00'22" East 70.00 feet and South 89°58'18" West 50.00 feet; thence North 0°00'22" East 575.00 feet; thence South 89°58'18" West 20.00 feet to the Northeast corner of Lot 402, Ski Haven Estates No. 4; thence North 0°00'22" East 65.59 feet along the East boundary line of said Ski Haven Estates No. 4 a subdivision in Sandy City, Salt Lake County, Utah; thence North 89°48'32" East 490.74 feet along a line parallel to the centerline of 9400 South Street; thence South 87°48'41" East 630.39 feet; thence North 89°48'32" East 179.22 feet along a line parallel to said centerline; thence Southeasterly along the arc of a 39.02 foot radius curve to the right a distance of 31.42 feet (Central Angle equals 48°12'56" and Long Chord bears South 67°03'57" East 30.63 feet) to the point of beginning.

Contains 21.787 Acres (3 Lots)
SURVEYOR'S CERTIFICATE
I, Mark E. Bobbitt, do hereby certify that I am a Registered Professional Land Surveyor, and that I hold Certificate No. 166484, as prescribed by the Laws of the State of Utah, and I have made a survey of the above described property. I further certify that the above plat correctly shows the true dimensions of the property surveyed.

Date: _____
Mark E. Bobbitt
STATE OF UTAH
OWNER'S DEDICATIONS
Know all men by these presents that I, the President, Member and undersigned owner of the tract of land, having caused same to be subdivided into lots and streets to be hereafter known as the Little Cottonwood Center Subdivision - First Amendment do hereby dedicate for perpetual use of the public all parcels of land shown on this plat as intended for public use.
In witness whereof I have hereunto set my hand this _____ day of _____ A.D., 2010.

MAGNA INVESTMENT & DEVELOPMENT, LTD.
By Allied Services Inc., a Utah corporation,
General Partner of Magna Investment & Development, LTD.,
a Utah limited partnership
Thalia Smart Executive Vice President
CORPORATE ACKNOWLEDGMENT
State of Utah
County of Salt Lake
On the 11 day of October, A.D., 2010, personally appeared before me Thalia Smart, Executive Vice President of Allied Services, Inc., General Partner of Magna Investment & Development, Ltd., a Utah limited partnership, the signer of the above instrument, who duly acknowledged to me that the partnership executed the same.

Residing at: 5760 Bullion St.
Commission Expires: 9/18/11
Rhca Jay Underwood
A Notary Public commissioned in Utah
Rhca Jay Underwood
Notary Name

Little Cottonwood Center Subdivision - First Amendment
A part of the Northeast 1/4 of Section 9, T3S, R1E, SLB&M, U.S. Survey
Sandy City, Salt Lake County, Utah

SANDY CITY PARKS AND RECREATION Approved this 11 day of October, A.D., 2010. Dag Madsen Signature	QUESTAR Approved this 30 day of September, A.D., 2010. Benita Zinner Signature	COTTONWOOD SEWER IMPROVEMENT DISTRICT Approved this 29 day of September, A.D., 2010. Maggie B. Jiff Signature	ROCKY MOUNTAIN POWER Approved this 30 day of Sept, A.D., 2010. R. G. Witt Signature	QWEST COMMUNICATIONS Approved this 1 day of Oct, A.D., 2010. M. Lemo Signature	WHITE CITY WATER Approved this 29 day of September, A.D., 2010. Ryan Johnson Signature	COMCAST CABLE Approved this 30 day of September, A.D., 2010. Kerida Hankley Signature
-------------------------------------------------------------------------------------------------------------------	------------------------------------------------------------------------------------------------	-------------------------------------------------------------------------------------------------------------------------------	-----------------------------------------------------------------------------------------------------	------------------------------------------------------------------------------------------------	--------------------------------------------------------------------------------------------------------	-------------------------------------------------------------------------------------------------------

BOARD OF HEALTH Approved this 30 day of September, A.D., 2010. R. G. Witt Signature	APPROVAL AS TO FORM Approved this 4 day of October, A.D., 2010. Kathleen B. Johnson Sandy City Attorney	SANDY CITY PUBLIC UTILITIES Approved this 4 day of October, A.D., 2010. Halley Shuman Engineering Manager	CITY ENGINEER Approved this 9 day of October, A.D., 2010. Sandy City Engineer	PLANNING COMMISSION Approved this 1 day of Oct, A.D., 2010. By the Sandy City Planning Commission. Chairman, Sandy City Planning Commission	SANDY CITY MAYOR Presented to the Mayor this 15 day of October, A.D., 2010, at which time this subdivision was approved and accepted. Molly Spira City Recorder Jan Doherty Mayor	RECORDER #11054550 STATE OF UTAH, COUNTY OF SALT LAKE, RECORDED AND FILED AT THE REQUEST OF MAGNA INVESTMENT & DEVELOPMENT, LTD. DATE: 10/11/2010 TIME: 9:11 AM BOOK: 2010 PAGE: 144 DIV. FEE: \$ 32.00 Jan Doherty Recorder
-----------------------------------------------------------------------------------------------------	-------------------------------------------------------------------------------------------------------------------------	---------------------------------------------------------------------------------------------------------------------------	--------------------------------------------------------------------------------------------	----------------------------------------------------------------------------------------------------------------------------------------------------------	---------------------------------------------------------------------------------------------------------------------------------------------------------------------------------------------------------	-------------------------------------------------------------------------------------------------------------------------------------------------------------------------------------------------------------------------------------------------