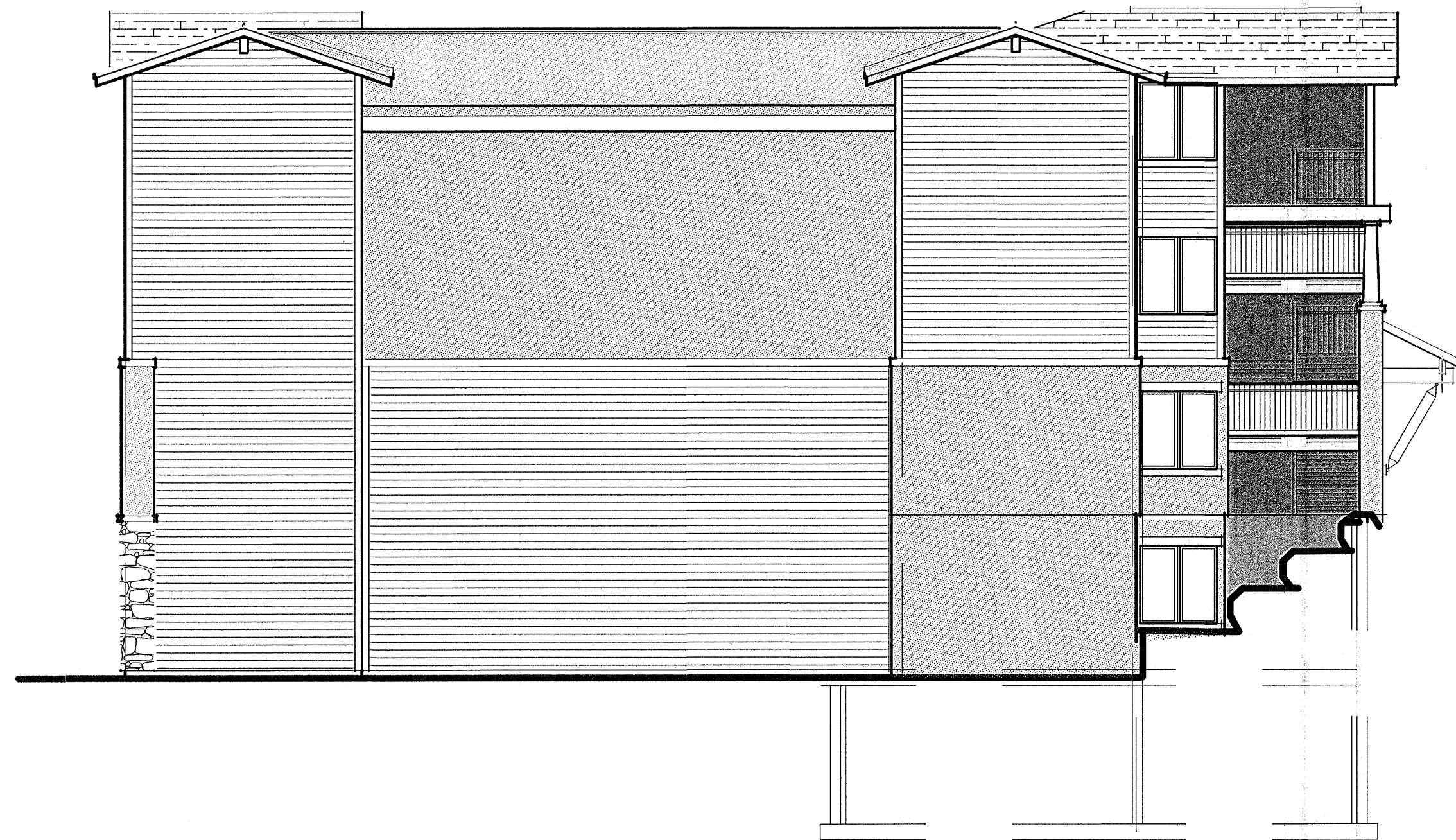


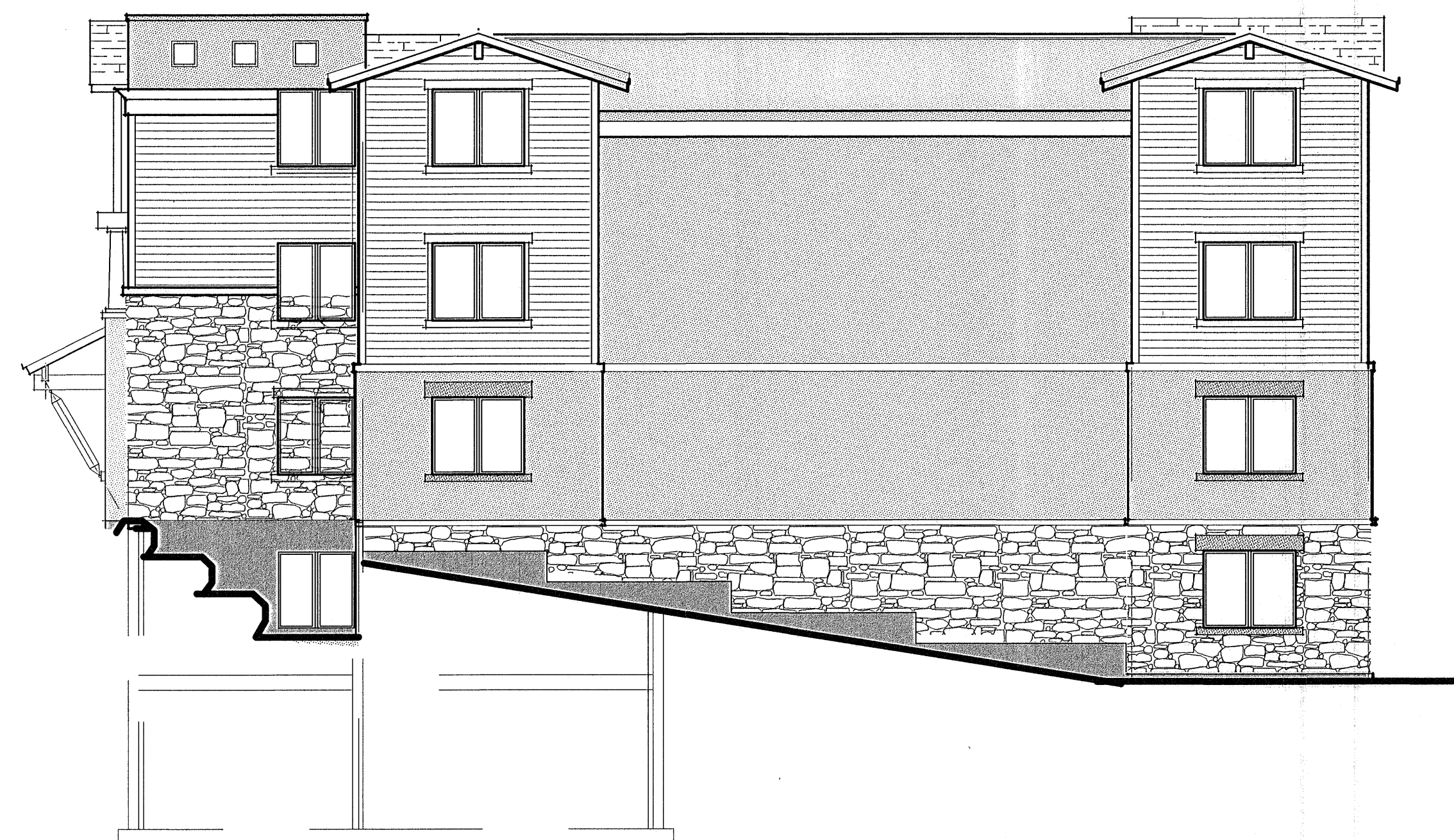
LAKE RESIDENCES AT BEAR LAKE PHASE 8B



NORTH ELEVATION



WEST ELEVATION



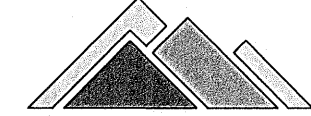
SOUTH ELEVATION



EAST ELEVATION

ARCHITECTURAL DRAWINGS BY:
HORN PARTNERS ARCHITECTURE
PO BOX 386 BOUNTIFUL, UT 84011
PH. 801-295-4676 FAX 801-299-1111

PROJECT
C19-027
SHEET
2 OF 7
ISSUE DATE
12/08/2021

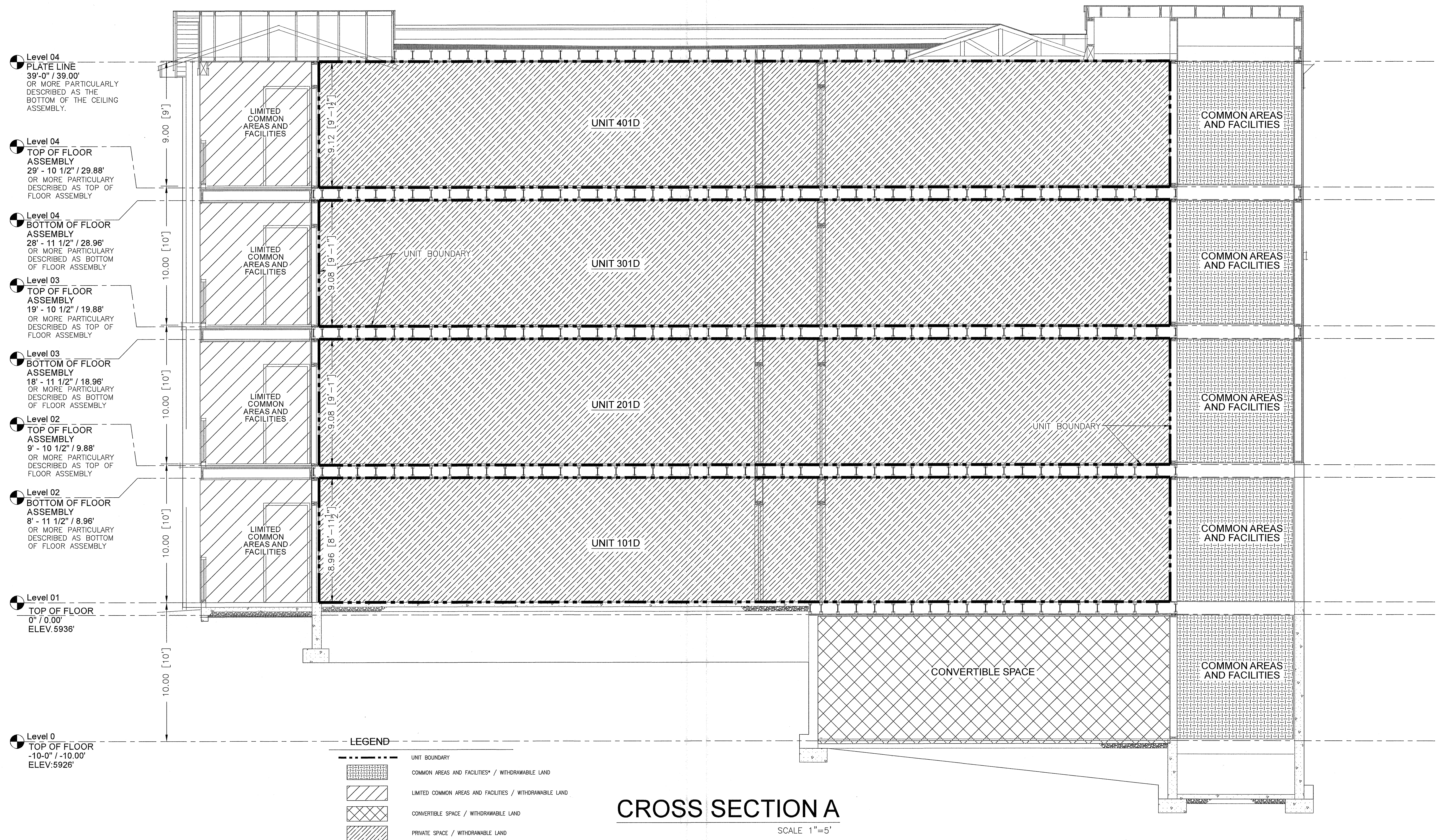

Summit Engineering Group Inc.
Structural • Civil • Surveying
55 WEST CENTER • P.O. BOX 176
HEBER CITY, UTAH 84032
P. 435-854-9229 • F. 435-854-9231

COPYRIGHT © 2021
SUMMIT ENGINEERING GROUP, INC.
DRAWING ALTERATION
IT IS A VIOLATION OF LAW FOR ANY
PERSON, UNLESS ACTING UNDER THE
DIRECTION OF THE PROFESSIONAL LAND
SURVEYOR TO ALTER ANY ITEM ON THIS
DOCUMENT IN ANY WAY. ANY LICENSEE WHO
ALTERS THIS DOCUMENT IS REQUIRED BY
LAW TO AFFIX THEIR SEAL AND THE
NOTATION "ALTERED BY" FOLLOWED BY
THEIR SIGNATURE AND SPECIFIC DESCRIPTION
OF THE ALTERATIONS.

LAKE RESIDENCES AT BEAR LAKE PHASE 8B

LOCATED IN THE NORTHWEST $\frac{1}{4}$ OF SECTION 21, TOWNSHIP 14 NORTH, RANGE 5 EAST, SLB&M,
GARDEN CITY, RICH COUNTY, UTAH

LAKE RESIDENCES AT BEAR LAKE PHASE 8B



PROJECT
C19-027
SHEET
3 OF 7
ISSUE DATE
12/08/2021

Summit Engineering Group Inc.
Structural • Civil • Surveying
55 WEST CENTER • P.O. BOX 176
GARDEN CITY, UTAH 84032
P: 435-654-9228 • F: 435-654-9231

COPYRIGHT © 2021
SUMMIT ENGINEERING GROUP, INC.
DRAWING ALTERATION
IT IS A VIOLATION OF LAW FOR ANY
PERSON, UNLESS ACTING UNDER THE
DIRECTION OF THE PROFESSIONAL LAND
SURVEYOR TO ALTER ANY ITEM ON THIS
DOCUMENT IN ANY WAY. ANY LICENSEE WHO
ALTERS THIS DOCUMENT IS REQUIRED BY
LAW TO AFFIX THEIR SEAL AND THE
NOTATION "ALTERED BY" FOLLOWED BY
THEIR SIGNATURE AND SPECIFIC DESCRIPTION
OF THE ALTERATIONS.

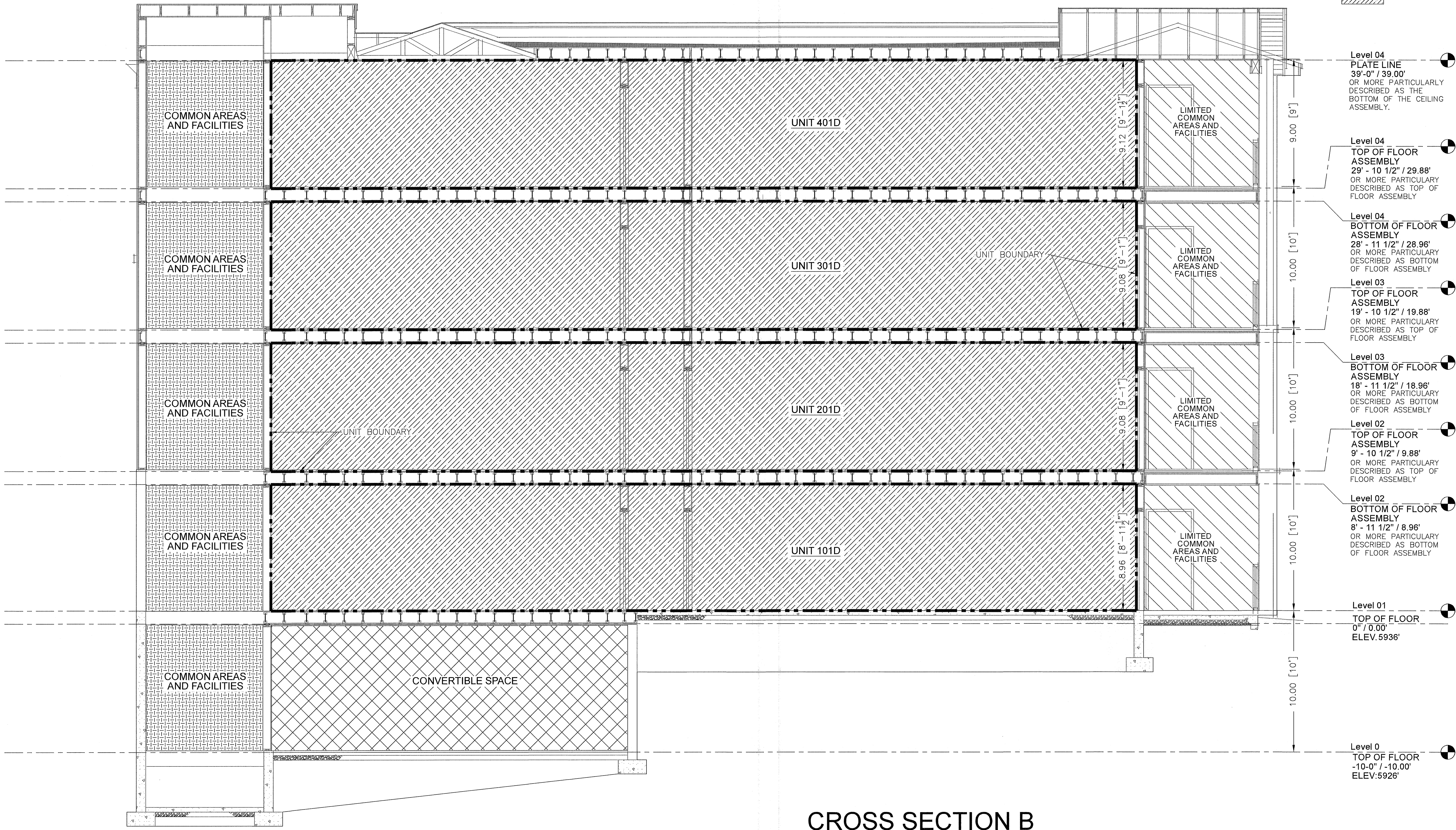
LAKE RESIDENCES AT BEAR LAKE PHASE 8B

LOCATED IN THE NORTHWEST 1/4 OF SECTION 21, TOWNSHIP 14 NORTH, RANGE 5 EAST, SLB&M,
GARDEN CITY, RICH COUNTY, UTAH

LAKE RESIDENCES AT BEAR LAKE PHASE 8B

LEGEND

- UNIT BOUNDARY
- COMMON AREAS AND FACILITIES* / WITHDRAWABLE LAND
- LIMITED COMMON AREAS AND FACILITIES / WITHDRAWABLE LAND
- CONVERTIBLE SPACE / WITHDRAWABLE LAND
- PRIVATE SPACE / WITHDRAWABLE LAND



PROJECT
C19-027

SHEET
4 OF 7

ISSUE DATE
12/08/2021

Summit Engineering Group Inc.

Structural • Civil • Surveying

55 WEST CENTER • P.O. BOX 176
HEBER CITY, UTAH 84032
P: 435-854-9228 • F: 435-854-9231

COPYRIGHT © 2021
SUMMIT ENGINEERING GROUP, INC.

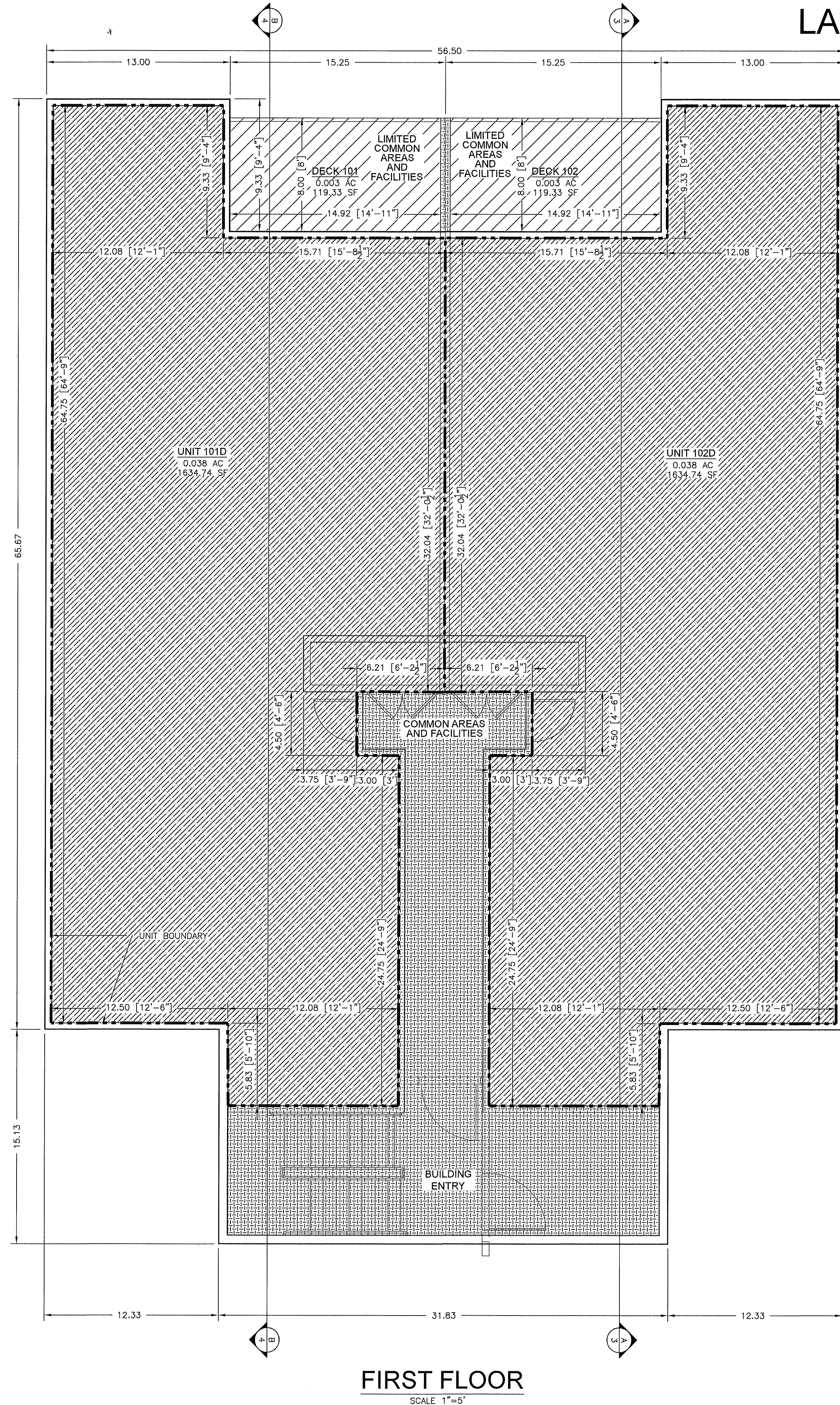
DRAWING ALTERATION

IT IS A VIOLATION OF LAW FOR ANY
PERSON, UNLESS ACTING UNDER THE
DIRECTION OF THE PROFESSIONAL LAND
SURVEYOR TO ALTER ANY ITEM ON THIS
DOCUMENT IN ANY MANNER. ANY LICENSEE WHO
ALTERS THIS DOCUMENT IS REQUIRED BY
LAW TO SIGN THEIR NAME AND THE
NOTATION "ALTERED BY" FOLLOWED BY
THEIR SIGNATURE AND SPECIFIC DESCRIPTION
OF THE ALTERATIONS.

LAKE RESIDENCES AT BEAR LAKE PHASE 8B

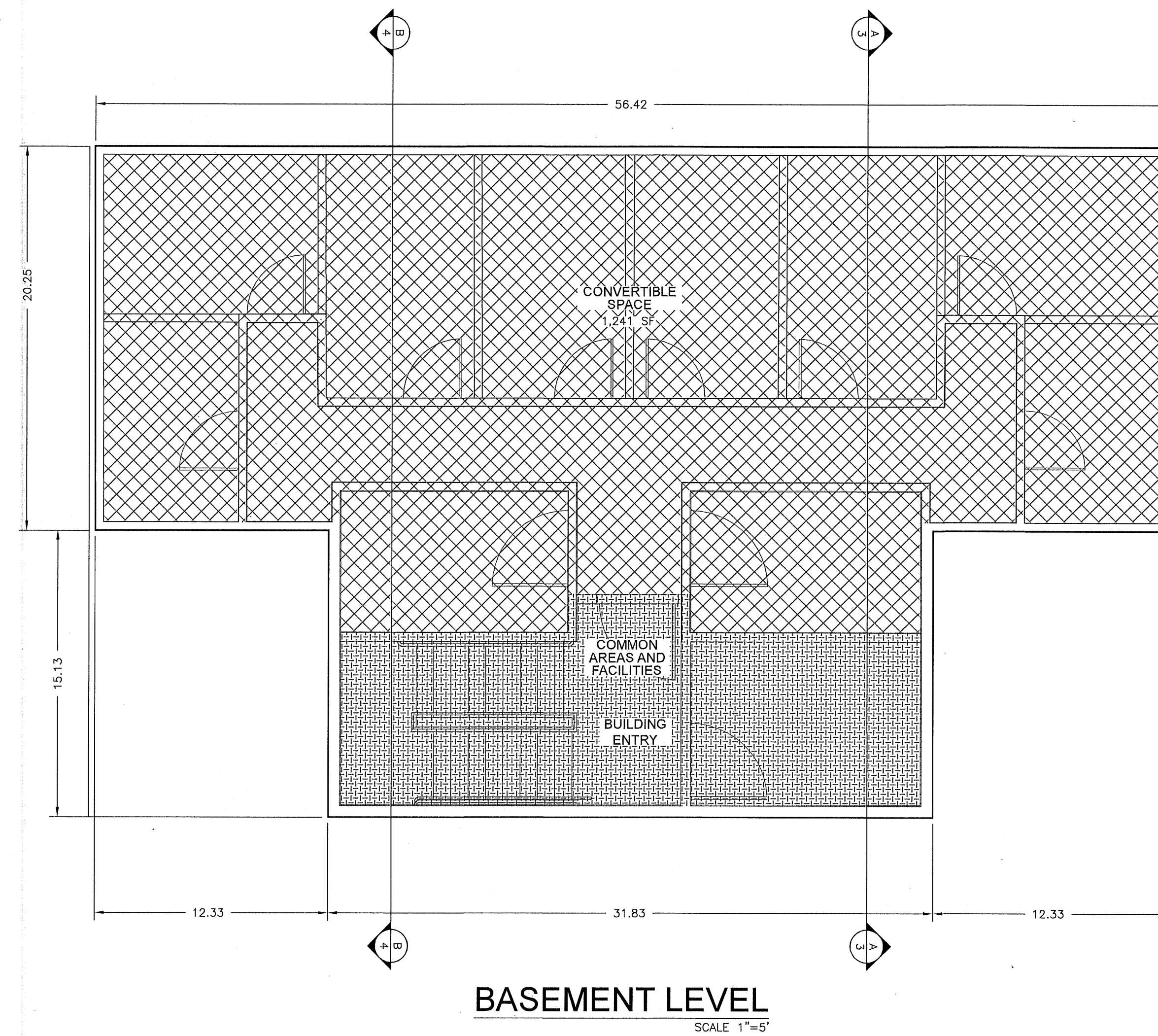
LOCATED IN THE NORTHWEST 1/4 OF SECTION 21, TOWNSHIP 14 NORTH, RANGE 5 EAST, SLB&M,
GARDEN CITY, RICH COUNTY, UTAH

LAKE RESIDENCES AT BEAR LAKE PHASE 8B



LEGEND

	UNIT BOUNDARY
	COMMON AREAS AND FACILITIES* / WITHDRAWABLE LAND
	LIMITED COMMON AREAS AND FACILITIES / WITHDRAWABLE LAND
	CONVERTIBLE SPACE / WITHDRAWABLE LAND
	PRIVATE SPACE / WITHDRAWABLE LAND



LAKE RESIDENCES AT BEAR LAKE PHASE 8B

LOCATED IN THE NORTHWEST 1/4 OF SECTION 21, TOWNSHIP 14 NORTH, RANGE 5 EAST, SLB&M,
GARDEN CITY, RICH COUNTY, UTAH

PROJECT
C19-027

SHEET
5 OF 7

ISSUE DATE
12/08/2021

Summit Engineering Group Inc.
Structural • Civil • Surveying
55 WEST CENTER • P.O. BOX 176
HEBERT CITY, UTAH 84032
P: 435-654-9229 • F: 435-654-9231

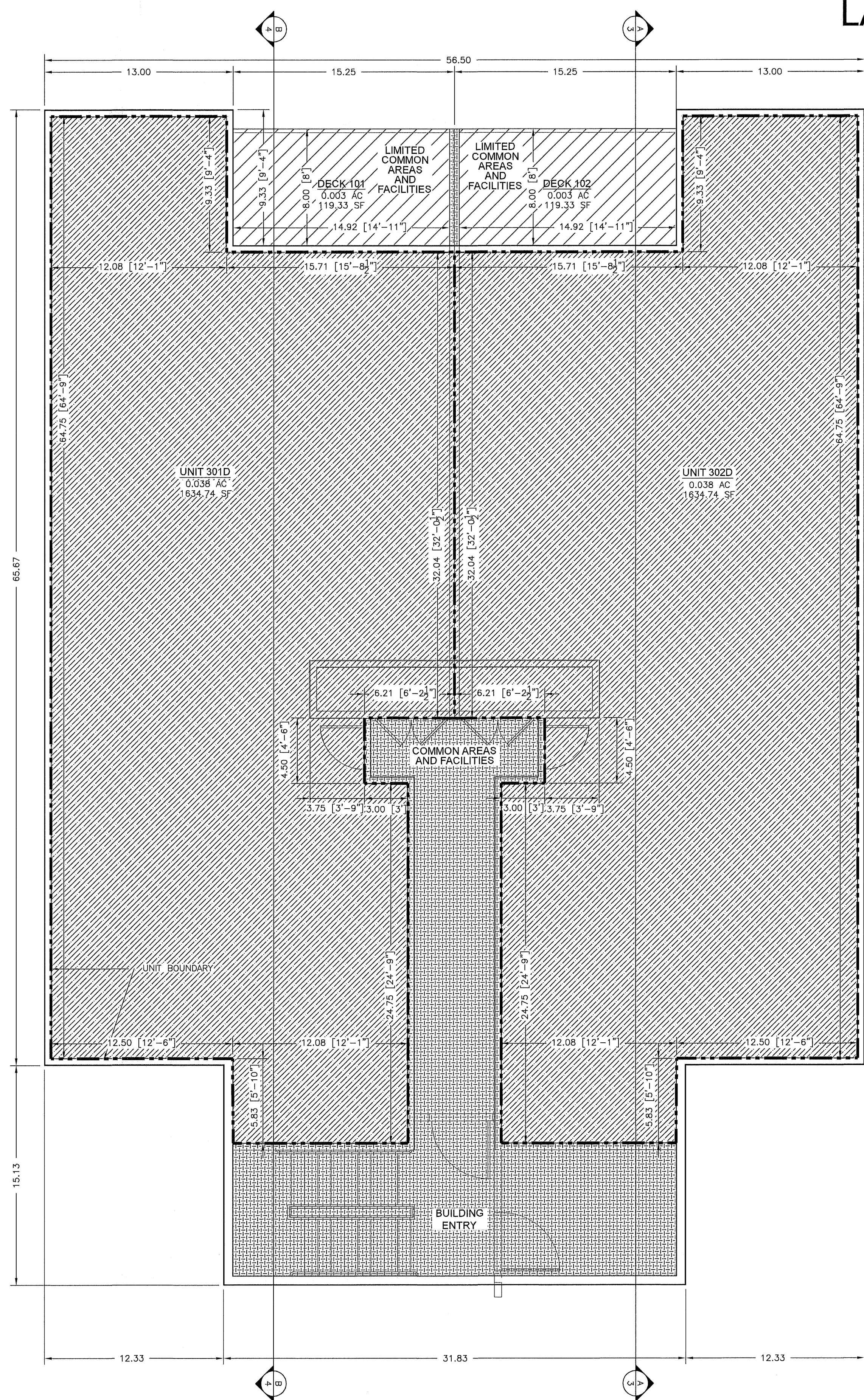
COPYRIGHT © 2021
SUMMIT ENGINEERING GROUP, INC.

DRAWING ALTERATION

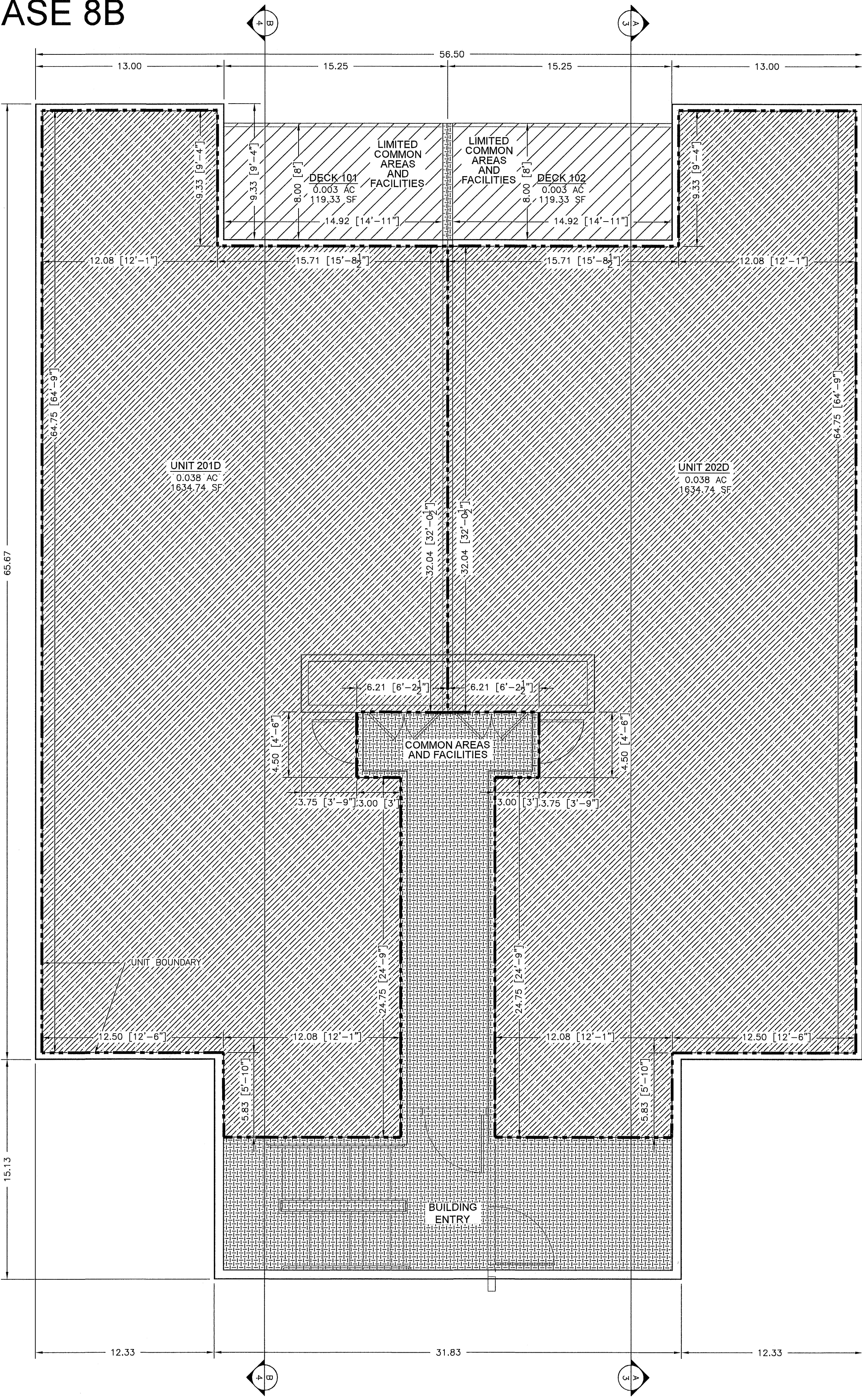
IT IS A VIOLATION OF LAW FOR ANY
PERSON, UNLESS ACTING UNDER THE
DIRECTION OF THE PROFESSIONAL LAND
SURVEYOR TO ALTER ANY ITEM ON THIS
DRAWING. IF A PERSON DOES ALTER THIS
DRAWING, THE ALTERATION SHALL BE
NOTED BY THE PERSON'S SIGNATURE AND
DATE. THE NOTATION "ALTERED BY" FOLLOWED BY
THEIR SIGNATURE AND SPECIFIC DESCRIPTION
OF THE ALTERATION.

Z:\SEG PROJECTS\CURRENT PROJECTS\C19-027 WATERS EDGE PH 8A\WORKING FILES\SURVEY\DWG\C19-027 PH8B PLAT CONDO SHEETS.DWG

LAKE RESIDENCES AT BEAR LAKE PHASE 8B



THIRD FLOOR
SCALE 1"=5'



SECOND FLOOR
SCALE 1"=5'

LEGEND

- UNIT BOUNDARY
- COMMON AREAS AND FACILITIES* / WITHDRAWABLE LAND
- LIMITED COMMON AREAS AND FACILITIES / WITHDRAWABLE LAND
- PRIVATE SPACE / WITHDRAWABLE LAND

LAKE RESIDENCES AT BEAR LAKE PHASE 8B

LOCATED IN THE NORTHWEST 1/4 OF SECTION 21, TOWNSHIP 14 NORTH, RANGE 5 EAST, SLB&M,
GARDEN CITY, RICH COUNTY, UTAH

PROJECT
C19-027
SHEET
6 OF 7
ISSUE DATE
12/08/2021

Summit Engineering Group Inc.
Structural • Civil • Surveying
55 WEST CENTER • P.O. BOX 176
HEBER CITY, UTAH 84032
P: 435-654-9229 • F: 435-654-9231

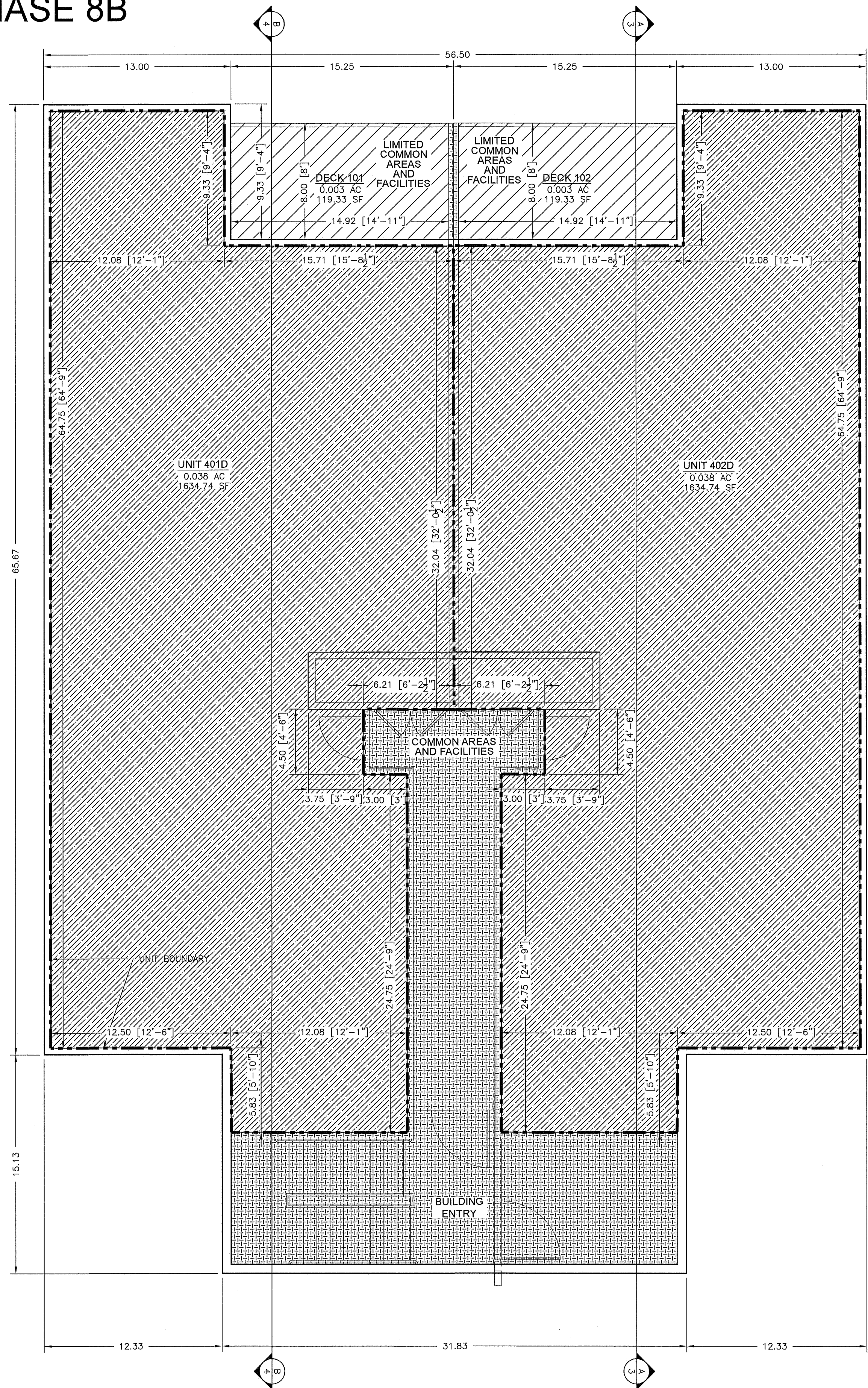
COPYRIGHT © 2021
SUMMIT ENGINEERING GROUP, INC.
DRAWING ALTERATION
IT IS A VIOLATION OF LAW FOR ANY
PERSON, UNLESS ACTING UNDER THE
DIRECTION OF THE PROFESSIONAL LAND
SURVEYOR TO ALTER ANY ITEM ON THIS
DOCUMENT IN ANY WAY. ANY LICENSEE WHO
ALTERS THIS DOCUMENT IS REQUIRED BY
LAW TO ATTEST THEIR SEAL AND THE
NOTATION "ALTERED BY" FOLLOWED BY
THEIR SIGNATURE AND SPECIFIC DESCRIPTION
OF THE ALTERATIONS.

Z:\SEC PROJECTS\CURRENT PROJECTS\C19-027 WATERS EDGE PH 8A\WORKING FILES\SURVEY\DWG\C19-027 PH8D PLAT CONDO SHEETS.DWG

LAKE RESIDENCES AT BEAR LAKE PHASE 8B

LEGEND

- UNIT BOUNDARY
- COMMON AREAS AND FACILITIES* / WITHDRAWABLE LAND
- LIMITED COMMON AREAS AND FACILITIES / WITHDRAWABLE LAND
- PRIVATE SPACE / WITHDRAWABLE LAND



FORTH FLOOR

SCALE 1"=5'

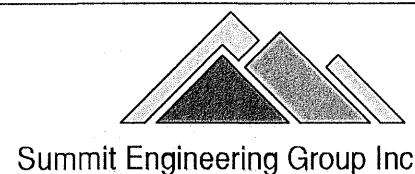
LAKE RESIDENCES AT BEAR LAKE PHASE 8B

LOCATED IN THE NORTHWEST 1/4 OF SECTION 21, TOWNSHIP 14 NORTH, RANGE 5 EAST, SLB&M,
GARDEN CITY, RICH COUNTY, UTAH

PROJECT
C19-027

SHEET
7 OF 7

ISSUE DATE
12/08/2021



Structural • Civil • Surveying
55 WEST CENTER • P.O. BOX 176
HEBER CITY, UTAH 84032
P: 435-854-8228 • F: 435-854-8231

COPYRIGHT © 2021
SUMMIT ENGINEERING GROUP, INC.
DRAWING ALTERATION
IT IS A VIOLATION OF LAW FOR ANY
PERSON, UNLESS ACTING UNDER THE
DIRECTION OF THE PROFESSIONAL LAND
SURVEYOR TO ALTER ANY ITEM ON THIS
DOCUMENT IN ANY WAY. ANY LICENSEE WHO
ALTERS THIS DOCUMENT IS REQUIRED BY
LAW TO AFFIX THEIR SEAL AND THE
NOTATION "ALTERED BY" FOLLOWED BY
THEIR SIGNATURE AND SPECIFIC DESCRIPTION
OF THE ALTERATIONS.