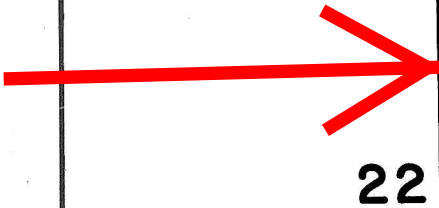
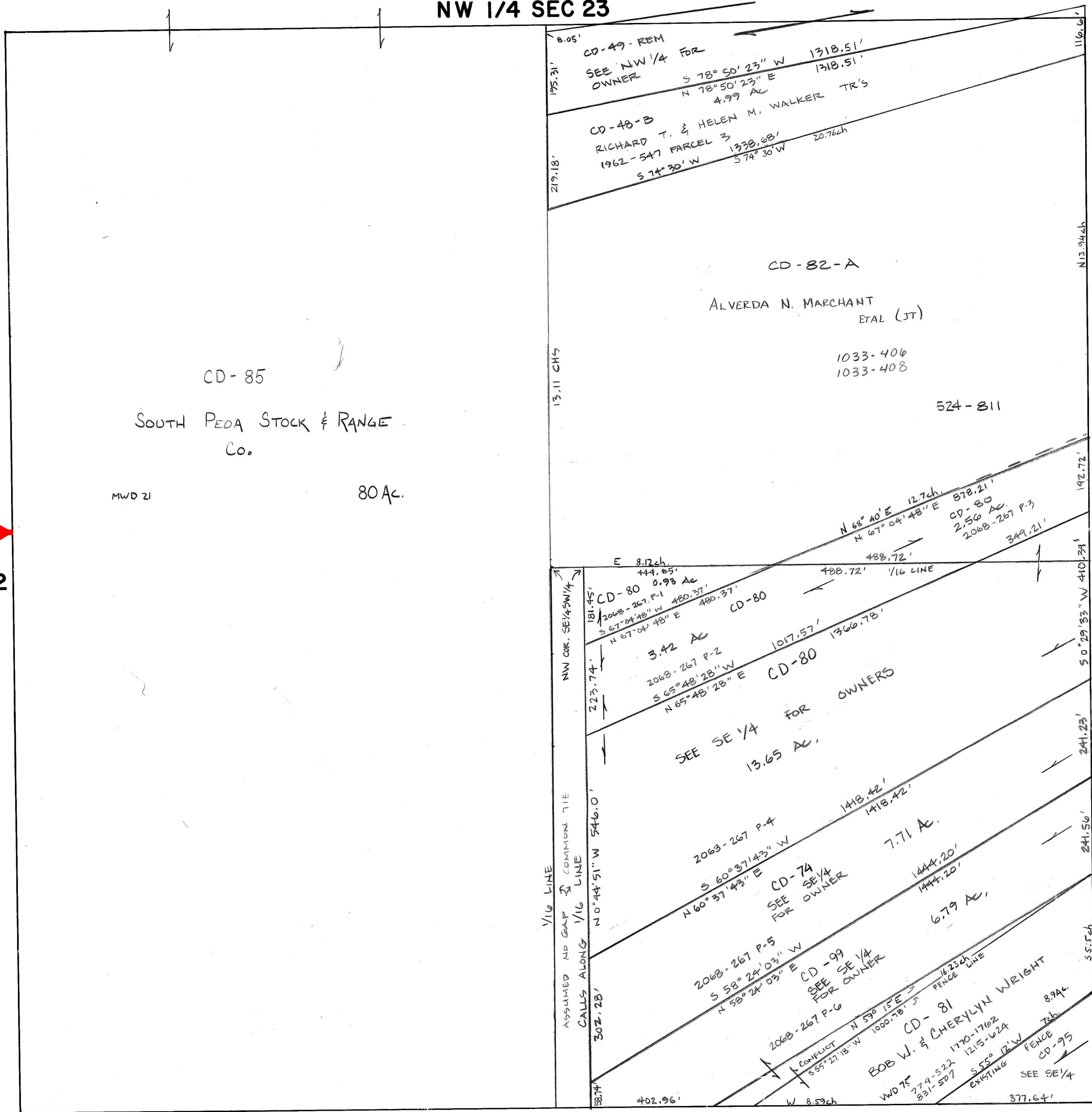


SW 1/4 SECTION 23
T I S - R 5 E
SALT LAKE BASE & MERIDIAN

This plat is made solely for the purpose of assisting in locating the property and Cottonwood Title Insurance Agency, Inc. assumes no liability for variation, if any, with actual survey.

NW 1/4 SEC 23



22

SE 1/4 SEC 23

26

Approved	REVISIONS - DATE AND INITIAL (In Pencil)
Utah State Tax Comm	8/21/50 W
Date	By

SUMMIT COUNTY, UTAH

SCALE
ONE INCH 200 FEET
BOOK PAGE