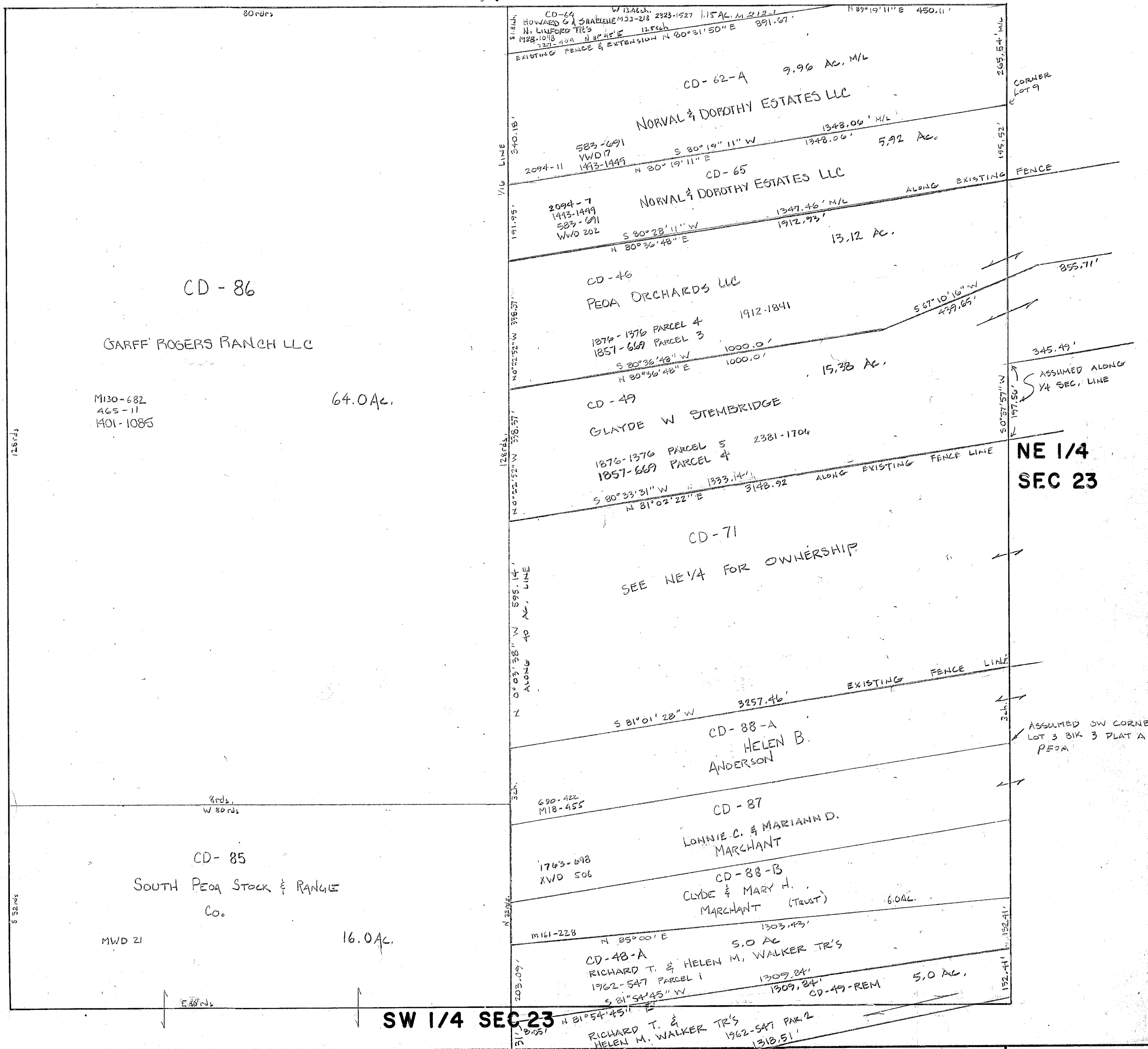


NW 1/4 SECTION 23
T I S - R 5 E
SALT LAKE BASE & MERIDIAN

14



22

NE 1/4
SEC 23

SW 1/4 SEC 23

Approved	REVISIONS - DATE AND INITIAL	(In Pencil)
Utah State Tax Comm	8/21/80 DRW	
Date	By	

SUMMIT COUNTY, UTAH

SCALE
ONE INCH 200 FEET
BOOK PAGE