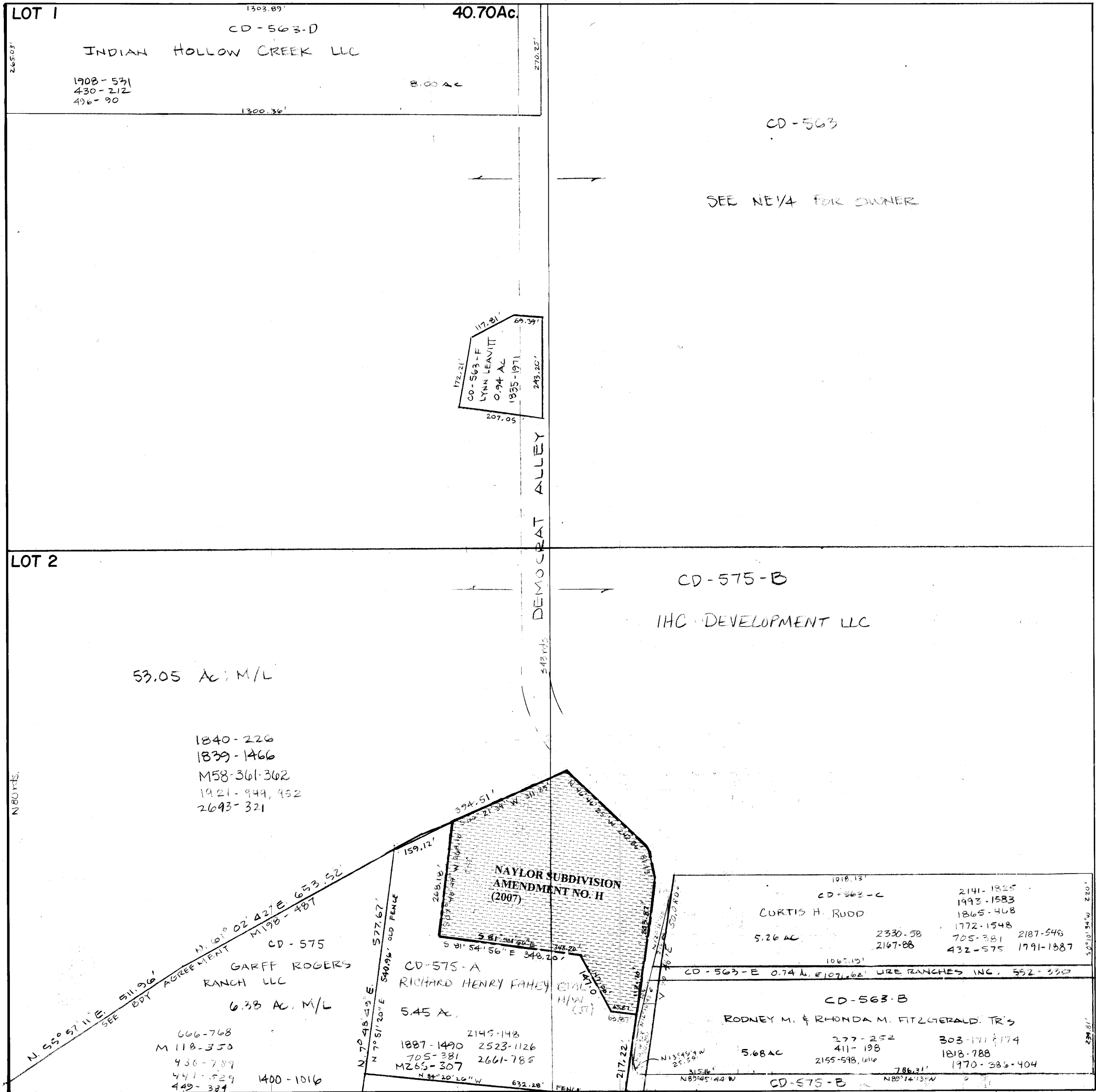


NW 1/4 SECTION 18
T 2 S - R 6 E
SALT LAKE BASE & MERIDIAN
SCALE 1" = 200'

7

13

NE 1/4
18



SW 1/4
18

Approved	REVISIONS - DATE AND INITIAL	(In Pencil)
Utah State Tax Comm	7.30.81 DRW	
Date	By	

SUMMIT COUNTY, UTAH

SCALE
ONE INCH 200 FEET
BOOK PAGE