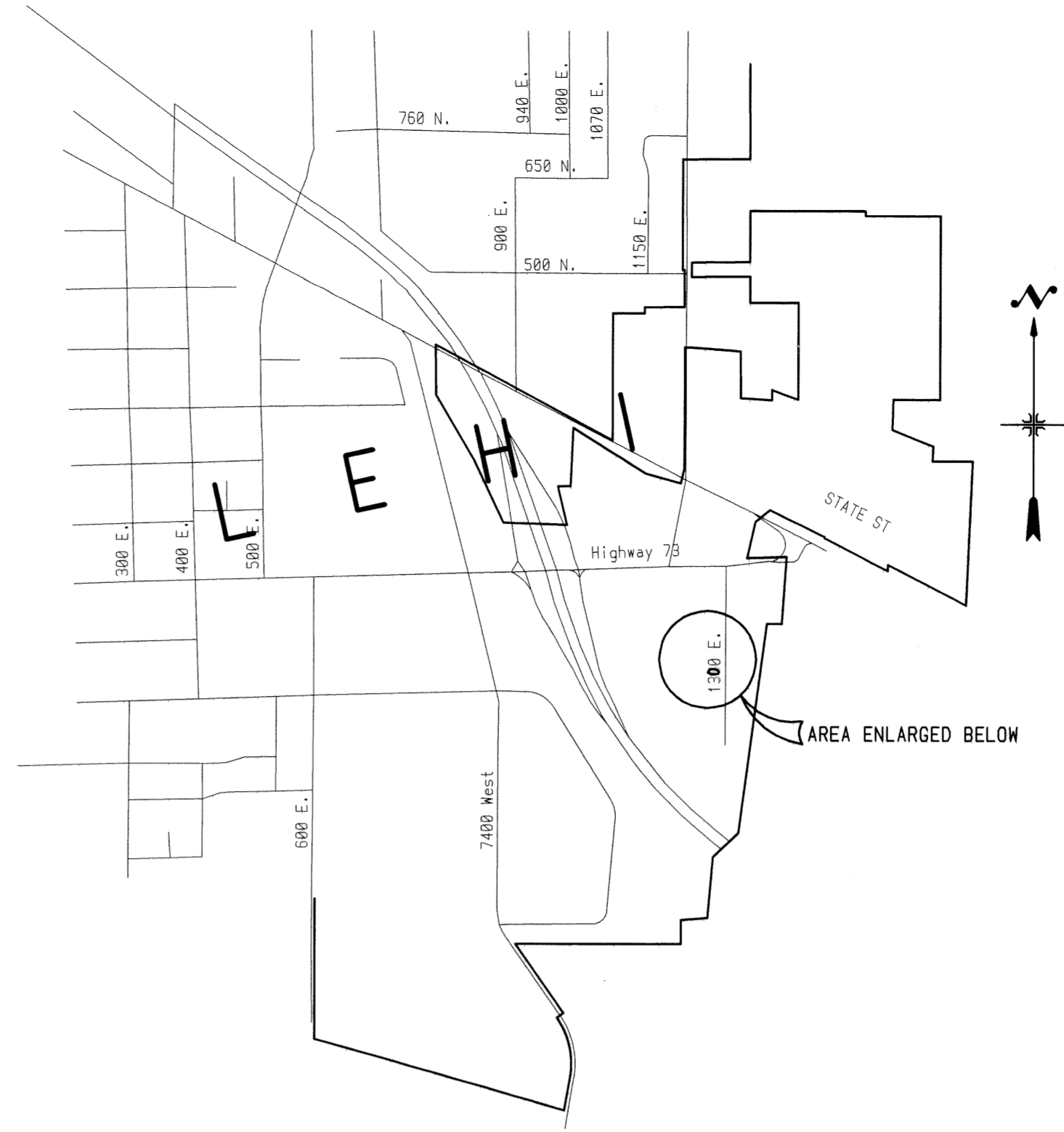
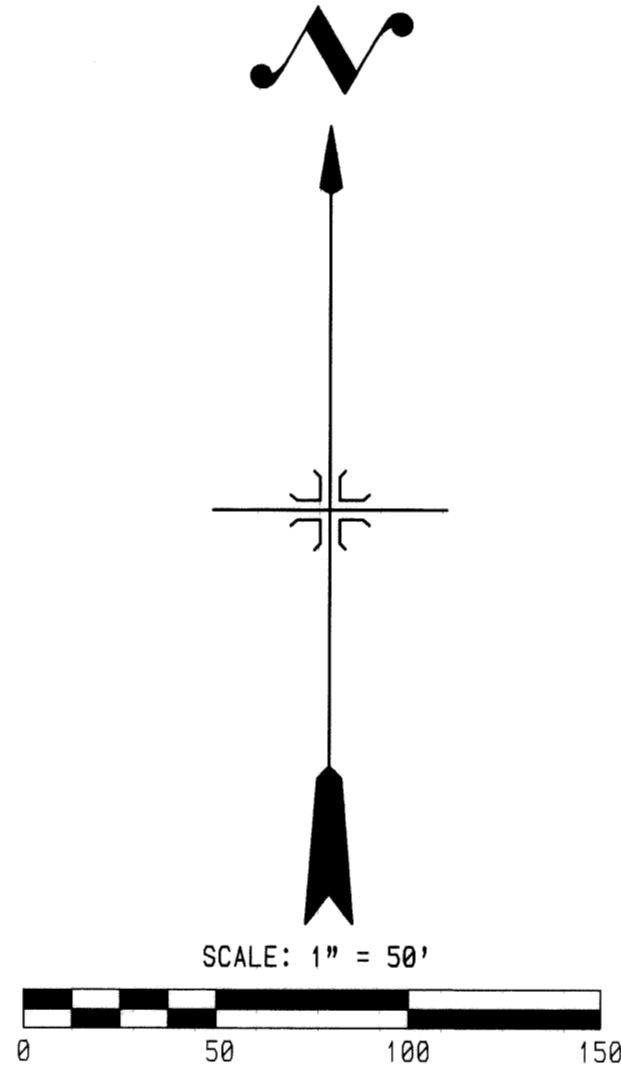
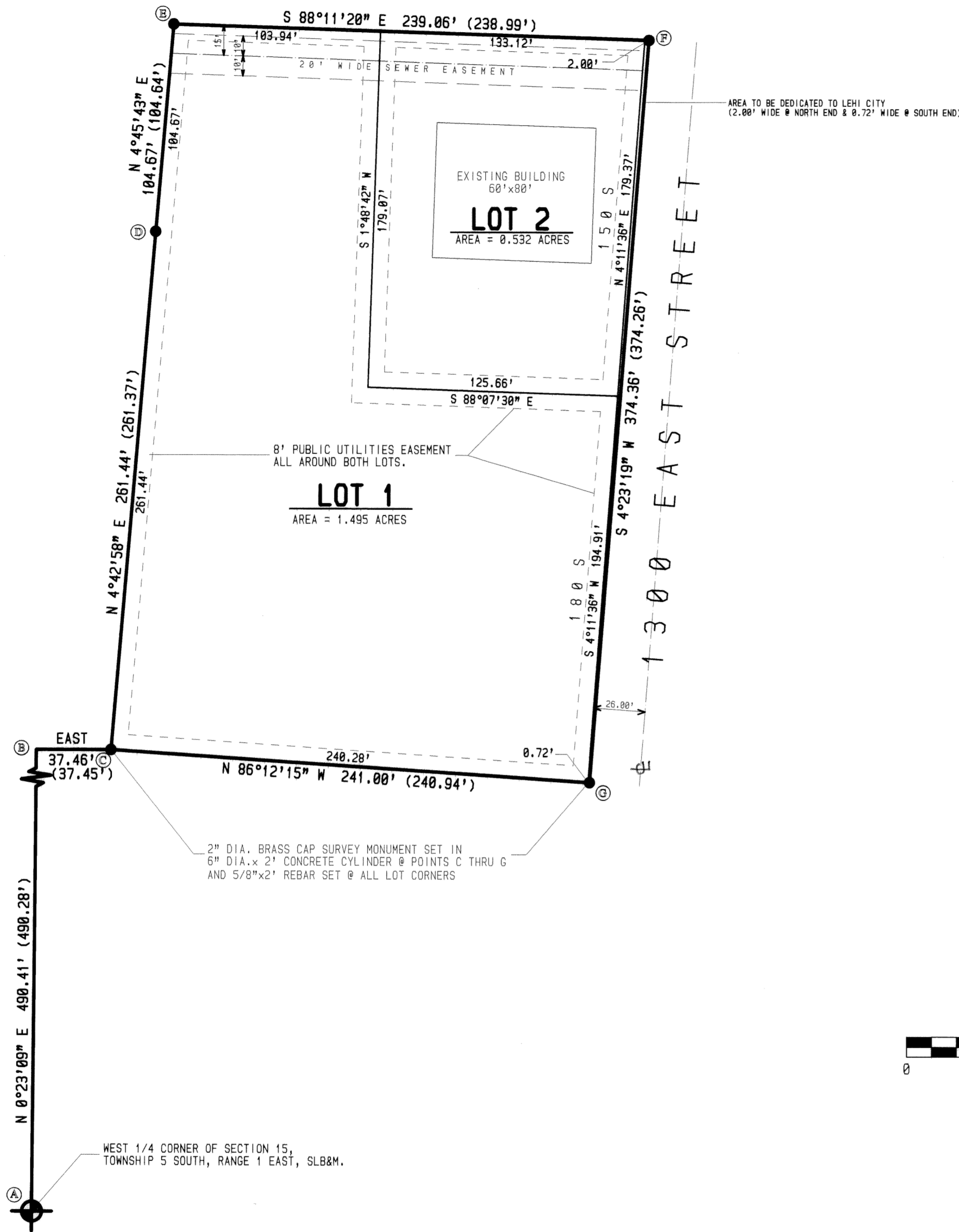


8500-98



VICINITY MAP
SCALE: 1" = 1 000'

STATE PLANE COORDINATES

POINT #	NORTHING	EASTING
A	749,901.0200	1,908,241.6400
B	750,391.2835	1,908,244.9425
C	750,391.2835	1,908,282.3938
D	750,651.7659	1,908,303.8831
E	750,756.0472	1,908,312.5701
F	750,748.4940	1,908,551.4428
G	750,375.3331	1,908,522.8043
H		
I		
J		

GRID FACTOR = 0.9997282

TABULATION OF ACREAGE

TOTAL ACREAGE = 2.027 ACRES
ACREAGE IN LOTS = 2.027 ACRES
ACREAGE IN STREET DEDICATION = 0.012 ACRES

SURVEYOR'S CERTIFICATE
I, BARRY L. PRETTYMAN, DO HEREBY CERTIFY THAT I AM A REGISTERED LAND SURVEYOR, AND THAT I HOLD CERTIFICATE NO. 166406 AS PRESCRIBED UNDER THE LAWS OF THE STATE OF UTAH. I FURTHER CERTIFY BY AUTHORITY OF THE OWNERS, I HAVE MADE A SURVEY OF THE TRACT OF LAND SHOWN ON THIS PLAT AND DESCRIBED BELOW, AND HAVE SUBDIVIDED SAID TRACT OF LAND INTO LOTS, BLOCKS, STREETS, AND EASEMENTS AND THE SAME HAS BEEN CORRECTLY SURVEYED AND STAKED ON THE GROUND AS SHOWN ON THIS PLAT AND THAT THIS PLAT IS TRUE AND CORRECT.

BOUNDARY DESCRIPTION 490.41
COMMENCING NORTH 0°23'09" EAST ALONG THE SECTION LINE, AND EAST 37.46 FEET FROM THE WEST 1/4 CORNER OF SECTION 15, TOWNSHIP 5 SOUTH, RANGE 1 EAST, SALT LAKE BASE MERIDIAN; THENCE AS FOLLOWS:

COURSE	DISTANCE	REMARKS
N 4°42'58" E	261.44'	
N 4°45'43" E	184.67'	
S 88°11'20" E	239.06'	
S 4°23'19" W	374.36'	
N 86°12'15" W	241.00'	TO THE POINT OF BEGINNING.

AREA = 2.027 ACRES

BASIS OF BEARING = UTAH COORDINATE BEARINGS, CENTRAL ZONE. S 38°57'19" W BETWEEN THE NORTHWEST CORNER OF SECTION 15, T 5 S, R 1 E, SLB8M. AND THE LAKE MTN. # 1 BACKSIGHT TOWER.
DATE Jan 28, 2000 SURVEYOR Barry L. Prettyman
(See Seal Below)

OWNERS' DEDICATION
KNOW ALL MEN BY THESE PRESENTS THAT WE, ALL OF THE UNDERSIGNED OWNERS OF ALL THE PROPERTY DESCRIBED IN THE SURVEYOR'S CERTIFICATE HEREON AND SHOWN ON THIS MAP, HAVE CAUSED THE SAME TO BE SUBDIVIDED INTO LOTS, BLOCKS, STREETS AND EASEMENTS AND DO HEREBY DEDICATE THE STREETS AND OTHER PUBLIC AREAS AS INDICATED HEREON FOR PERPETUAL USE OF THE PUBLIC.
IN WITNESS WHEREOF WE HAVE SET OUR HANDS THIS 4th DAY OF April, A.D. 19 2000
Salon Bennett - President Labon L Bennett
Biomn. medical systems inc.

ACKNOWLEDGEMENT
STATE OF UTAH } S.S.
COUNTY OF UTAH }
ON THE 4 DAY OF April, A.D. 19 2000 PERSONALLY APPEARED BEFORE ME THE SIGNERS OF THE FOREGOING DEDICATION WHO DULY ACKNOWLEDGE TO ME THAT THEY DID EXECUTE THE SAME.
MY COMMISSION EXPIRES May 27, 2000
Dianne C. Webb
NOTARY PUBLIC
(See Seal Below)

ACCEPTANCE BY LEGISLATIVE BODY
THE CITY COUNCIL OF LEHI CITY COUNTY OF UTAH, APPROVES THIS SUBDIVISION AND HEREBY ACCEPTS THE DEDICATION OF ALL STREETS, EASEMENTS, AND OTHER PARCELS OF LAND INTENDED FOR PUBLIC PURPOSES FOR THE PERPETUAL USE OF THE PUBLIC THIS 14 DAY OF March, A.D. 19 2000
James G. Johnson
John D. Johnson
Carl Johnson
Paul Johnson
APPROVED James G. Johnson ENGINEER (See Seal Below) ATTEST James G. Johnson CLERK-RECORDER (See Seal Below)

BOARD OF HEALTH
APPROVED SUBJECT TO THE FOLLOWING CONDITIONS _____
CITY-COUNTY HEALTH DEPARTMENT
PLANNING COMMISSION APPROVAL
APPROVED THIS 24 DAY OF February, A.D. 19 2000 BY THE PLANNING COMMISSION LEHI CITY
Wendy D. Smith
DIRECTOR-SECRETARY CHAIRMAN, PLANNING COMMISSION

PLAT "A" 255632000 (11.150)
RANDALL H. COULSTON
UTAH COUNTY RECORDER
2000 FEB 11 2:21 PM FEE \$2.00 BY SS
RECORDED FOR LEHI CITY

BIOMNI

A COMMERCIAL SUBDIVISION IN THE SW1/4NW1/4 OF SECTION 15, TOWNSHIP 5 SOUTH, RANGE 1 EAST, S.L.B.M. - UTAH COUNTY

SUBDIVISION
LEHI, UTAH COUNTY, UTAH
SCALE: 1" = 50 FEET

SURVEYOR'S SEAL: REGISTERED LAND SURVEYOR BARRY L. PRETTYMAN #166406 STATE OF UTAH

NOTARY PUBLIC SEAL: RANDALL H. COULSTON, Notary Public, State of Utah, My Commission Expires May 27, 2000

CITY-COUNTY ENGINEER SEAL: LEHI CITY ENGINEER

CLERK-RECORDER SEAL: RANDALL H. COULSTON, CLERK-RECORDER, LEHI CITY