



W2897534

EH 2897534 PG 1 OF 5
LEANN H KILTS, WEBER COUNTY RECORDER
28-DEC-17 12:59 PM FEE \$0.00 DEP DC
REC FOR: OGDEN VALLEY PARKS SERV AREA

WEBER COUNTY RESOLUTION NO. 43-2017

10-17

**A RESOLUTION TO INITIATE THE ANNEXATION OF UNINCORPORATED AREAS
OF WEBER COUNTY INTO THE
OGDEN VALLEY PARKS SERVICE AREA**

WHEREAS, Weber County is referred to herein as the "County;" and

WHEREAS, Ogden Valley Parks Service Area (the "Service Area") provides parks and recreation services to a portion of the area in Weber County commonly known as the Ogden Valley;

WHEREAS, the Service Area recently adjusted its common boundary with Eden Park Service District ("Eden Park"), which provided parks and recreation services to a different portion of the Ogden Valley area, in order that Ogden Valley would effectively take over the entire service area of Eden Park, resulting in a "merger" of the two districts;

WHEREAS, the Service Area and the County have concluded that it is in the best interest of the Service Area, the County, and the property owners and residents of the Ogden Valley area for remaining unincorporated areas of the Ogden Valley, which are currently not within the boundary of any parks and recreation district, to be annexed into the Service Area;

WHEREAS, Utah Code Ann. § 17B-1-403(1)(b) provides that the process to initiate an annexation into a local district may be initiated by a resolution adopted by the legislative body of the county whose unincorporated area includes the area proposed to be annexed; and

WHEREAS, having considered the matter, the Weber County Commission has concluded that it may be in the best interest of the Service Area, the County, and of the property owners and residents in the affected area of Ogden Valley for the remaining unincorporated areas of the Ogden Valley which are currently not within the boundary of any parks and recreation district, to be annexed into the Service Area, in accordance with the requirements of Utah Code Ann. § 17B-1-403(1)(b).

NOW, THEREFORE, BE IT RESOLVED and enacted by the Weber County Commission as follows:

- 1) That, for the reasons stated in the foregoing recitals, it is proposed that the real property described and otherwise identified in attached Exhibit "A," which is incorporated herein by this reference (the "Affected Area"), be annexed into and become part of the Service Area. A map of the boundaries of the Affected Area is attached as Exhibit "B." which is incorporated by this reference.
- 2) That this Resolution is adopted by the Weber County Commission for the purpose of fulfilling and complying with the requirements of Utah Code Ann. § 17B-1-403(1)(b) to initiate the statutory procedure for annexing the Affected Area;
- 3) That within five days after adopting this Resolution, a copy of this Resolution be mailed or delivered to the Board of Trustees of the Service Area, for the Service Area to

complete the statutory steps necessary to effectuate the annexation, including holding a public hearing on the proposed annexation pursuant to Utah Code Ann. § 17B-1-409 within 45 days, allowing for a 30-day protest period pursuant to Utah Code Ann. § 17B-1-412, and, if an insufficient number of protests are filed, adopting a resolution approving the annexation pursuant to Utah Code Ann. § 17B-1-414.

4) That this Joint Resolution has been placed on the agenda of a Weber County Commission meeting and this action is taken in compliance with the Utah Open and Public Meetings Act.

5) That this Joint Resolution shall take effect immediately when it has been approved by the Weber County Commission in accordance with the dates set forth below.

Approved and passed by the Weber County Commission on the dates set forth below.

**BOARD OF COUNTY COMMISSIONERS OF
WEBER COUNTY**

Date: October 17, 2017

By: *James Ebert*
James Ebert, Chair

Commissioner Ebert voted: aye
Commissioner Gibson voted: aye
Commissioner Harvey Voted: aye

ATTEST:

Ricky D. Hatch
Ricky D. Hatch, CPA
Weber County Clerk/Auditor

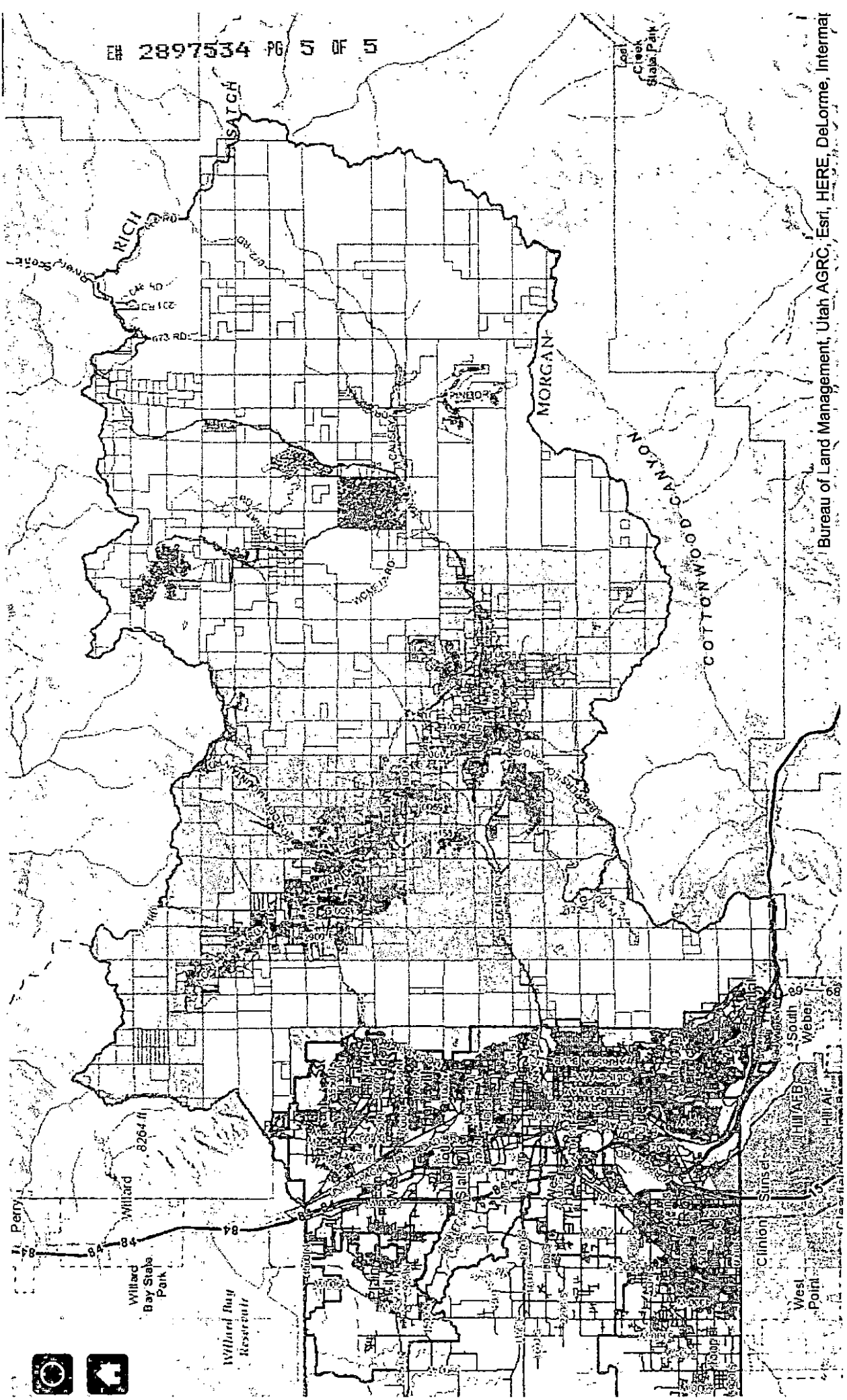


EXHIBIT A
AFFECTED AREA DESCRIPTION

ALL OF UNINCORPORATED WEBER COUNTY (EXCLUDING HUNTSVILLE TOWN) IN OGDEN VALLEY NOT CURRENTLY IN EITHER THE OGDEN VALLEY PARKS SERVICE AREA (FORMERLY WEBER COUNTY SERVICE AREA 5 - LIBERTY PARK) OR EDEN PARK SERVICE AREA.

GENERALLY THE AREA EAST OF THE WEST RIDGELINE SEPARATING OGDEN VALLEY FROM THE MUNICIPALITIES OF PLEASANT VIEW, NORTH OGDEN, OGDEN, SOUTH OGDEN AND UINTAH FROM THE NORTHERN AND NORTHWESTERN COUNTY LINE BETWEEN WEBER COUNTY AND BOX ELDER AND CACHE COUNTIES, THE NORTH EASTERN COUNTY LINE BETWEEN WEBER COUNTY AND RICH COUNTY, AND THE EASTERN AND SOUTHERN COUNTY LINE BETWEEN WEBER COUNTY AND MORGAN COUNTY.

EXHIBIT B
MAP OF AFFECTED AREA



Bureau of Land Management, Utah AGRC, Esri, HERE, DeLorme, Intermap