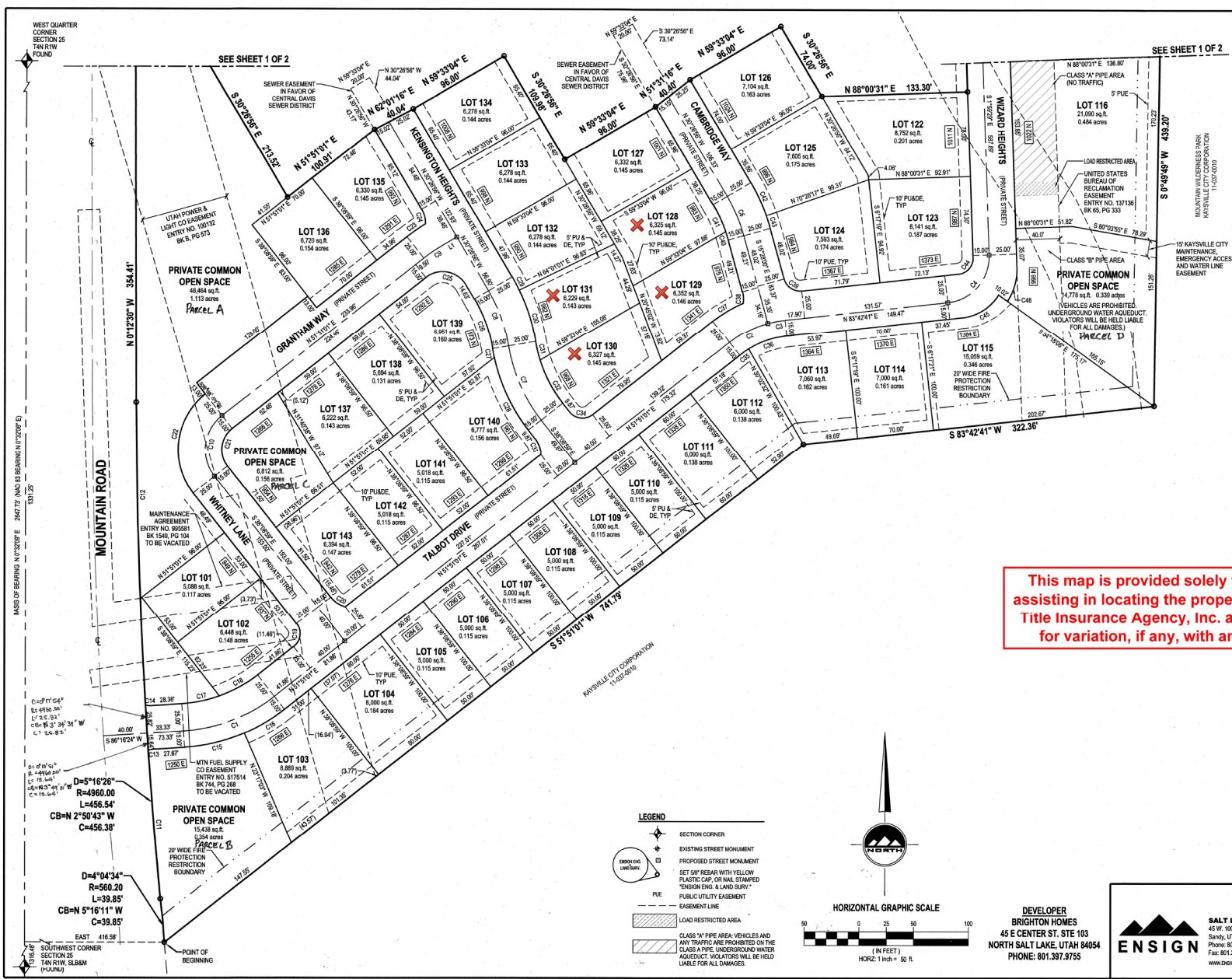


TALBOT ESTATES PHASE 1A PRUD
 LOCATED IN THE NORTHWEST AND SOUTHWEST QUARTERS OF SECTION 25
 TOWNSHIP 4 NORTH, RANGE 1 WEST
 SALT LAKE BASE AND MERIDIAN
 KAYSVILLE CITY, DAVIS COUNTY, UTAH



This map is provided solely for the purpose of assisting in locating the property and Cottonwood Title Insurance Agency, Inc. assumes no liability for variation, if any, with any actual survey.

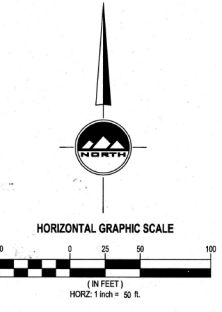
CURVE TABLE

CURVE	RADIUS	LENGTH	DELTA	BEARING	CHORD
C1	150.00'	90.12'	34°22'31"	N69°03'42"E	86.77'
C2	100.00'	39.59'	22°41'00"	S63°11'31"W	39.33'
C3	100.00'	16.02'	9°10'41"	S79°07'21"W	16.00'
C4	42.50'	63.57'	85°42'10"	N40°51'37"E	57.81'
C5	42.50'	49.21'	60°56'51"	N32°27'54"W	43.11'
C6	150.00'	39.22'	14°58'50"	N22°57'23"W	36.11'
C7	150.00'	74.74'	28°32'32"	S23°52'33"E	73.87'
C8	150.00'	54.58'	20°59'40"	N03°13'17"E	54.38'
C9	150.00'	20.10'	7°42'04"	S55°42'00"W	20.10'
C10	40.00'	62.87'	80°00'00"	S45°10'10"W	56.57'
C11	4000.00'	139.32'	1°54'20"	S44°14'14"E	136.31'
C12	4000.00'	278.78'	3°13'12"	S14°49'08"E	278.72'
C13	25.00'	5.69'	10°10'10"	S79°42'59"W	5.67'
C14	15.00'	5.00'	10°50'00"	S84°11'00"E	4.99'
C15	165.00'	56.32'	19°33'27"	N78°29'46"E	56.60'
C16	165.00'	42.81'	14°51'50"	N59°15'56"E	42.69'
C17	125.00'	35.29'	10°10'24"	N78°11'12"E	35.17'
C18	125.00'	38.81'	10°14'58"	N69°56'56"E	38.65'
C19	15.00'	23.50'	30°00'00"	N45°10'11"E	21.31'
C20	25.00'	16.09'	30°52'12"	S28°33'05"E	15.81'
C21	25.00'	39.27'	30°00'00"	S45°10'10"W	35.36'
C22	65.00'	102.10'	30°00'00"	S45°10'10"W	91.92'
C23	175.00'	20.42'	6°41'07"	S55°11'54"W	20.41'
C24	25.00'	14.34'	32°38'44"	N14°07'23"W	14.05'
C25	25.00'	42.83'	87°42'04"	N09°17'37"W	37.85'
C26	135.00'	48.12'	20°56'40"	N20°19'13"W	48.85'
C27	165.00'	8.12'	2°49'08"	S11°06'41"E	8.12'
C28	165.00'	74.09'	20°45'44"	S25°17'07"E	73.47'
C29	175.00'	13.64'	6°03'31"	S13°37'53"E	13.64'
C30	175.00'	50.03'	10°22'52"	N17°47'33"W	49.80'
C31	125.00'	17.58'	6°03'31"	S13°37'53"E	17.57'
C32	125.00'	44.70'	20°29'20"	S27°54'19"E	44.46'
C33	25.00'	16.09'	30°52'12"	N19°42'54"W	15.81'
C34	15.00'	23.50'	30°00'00"	S83°08'59"E	21.31'
C35	85.00'	9.90'	6°40'34"	S55°11'56"W	9.80'
C36	85.00'	37.36'	23°11'07"	S71°08'08"W	37.06'
C37	125.00'	32.18'	14°45'08"	S58°15'35"W	32.10'
C38	25.00'	10.68'	24°28'11"	N3°13'34"W	10.60'
C39	15.00'	21.16'	80°49'10"	S65°52'29"E	19.40'
C40	135.00'	7.88'	3°20'40"	N17°08'20"W	7.88'
C41	135.00'	27.42'	11°38'16"	N24°37'48"W	27.37'
C42	175.00'	33.35'	10°50'12"	N24°58'19"W	33.30'
C43	175.00'	12.41'	4°03'44"	N17°29'55"W	12.40'
C44	15.00'	22.44'	80°42'10"	N40°51'37"E	20.40'
C45	45.00'	8.44'	5°21'50"	N07°34'29"E	79.00'
C46	55.00'	33.19'	34°34'34"	N15°17'48"E	32.63'
C47	55.00'	8.44'	5°21'50"	N07°34'29"E	8.40'
C48	45.00'	49.39'	62°52'30"	N40°51'37"E	46.94'

LINE TABLE

LINE	BEARING	LENGTH
L1	N69°32'04"E	15.85'

- LEGEND**
- SECTION CORNER
 - EXISTING STREET MONUMENT
 - PROPOSED STREET MONUMENT
 - SET 5/8" REBAR WITH YELLOW PLASTIC CAP, OR GALV. STEEL REINFORCING ENG. & LAND SURV. TO BE INDICATED
 - PUE
 - EASEMENT LINE
 - PUBLIC UTILITY EASEMENT
 - LOAD RESTRICTED AREA
 - CLASS "M" PIPE AREA: VEHICLES AND ANY TRAFFIC ARE PROHIBITED ON THE CLASS "M" PIPE UNDERGROUND WATER AQUIFERS VIOLATORS WILL BE HELD LIABLE FOR ALL DAMAGES.



DEVELOPER
 BRIGHTON HOMES
 45 E CENTER ST., STE. 103
 NORTH SALT LAKE, UTAH 84054
 PHONE: 801.397.3755



SALT LAKE CITY
 45 W. 10000 S., Suite 500
 Sandy, UT 84070
 GENERAL ENTRY
 Phone: 801.255.0529
 Fax: 801.255.4449
 www.ensigneng.com

LAYTON
 TRIPLE
 Phone: 435.843.9890
 GENERAL ENTRY
 Phone: 435.843.1413
 FAX: 435.843.2863
 www.laytoneng.com

SHEET 2 OF 2
 PROJECT NUMBER: 94730
 MANAGER: BAM
 DRAWN BY: KFW
 CHECKED BY: PMH
 DATE: 02/02/2011

TALBOT ESTATES PHASE 1A PRUD

LOCATED IN THE NORTHWEST AND SOUTHWEST QUARTERS OF SECTION 25 TOWNSHIP 4 NORTH, RANGE 1 WEST SALT LAKE BASE AND MERIDIAN KAYSVILLE CITY, DAVIS COUNTY, UTAH

DAVIS COUNTY RECORDER
 ENTRY NO. 374921
 FEES PAID BY: [Signature]
 FILED FOR RECORD AND RECORDED THIS 21st DAY OF February 2011 IN BOOK 2772 AT PAGE 1590 OF OFFICIAL RECORDS

[Signature]
 DAVIS COUNTY RECORDER