

DOC # 20190000314

Roadway Dedication Page 1 of 13
Russell Shirts Washington County Recorder
01/04/2019 09:58:14 AM Fee \$ 0.00
By ST GEORGE CITY



ROADWAY DEDICATION

NAME: DESERT COLOR PARKWAY & LAGOON PARKWAY

LOTS: 0 MAP: 4117

PARCEL: SG-5-3-31-433-SLL

**THE STATE OF UTAH, ACTING THROUGH THE SCHOOL AND
INSTITUTIONAL TRUST LANDS ADMINISTRATION**

Unofficial Copy

Legal Description

THE FOLLOWING DESCRIBED AREA FOR THE DEDICATION OF PUBLIC RIGHT-OF-WAY, LOCATED IN THE NORTHWEST QUARTER, THE SOUTHWEST QUARTER, AND THE SOUTHEAST QUARTER, OF SECTION 25, TOWNSHIP 43 SOUTH, RANGE 16 WEST, SALT LAKE BASE AND MERIDIAN, WASHINGTON COUNTY, STATE OF UTAH, MORE PARTICULARLY DESCRIBED AS FOLLOWS:

BEGINNING AT A POINT THAT LIES NORTH 01°09'22" EAST 2326.91 FEET ALONG THE WEST LINE OF THE NORTHWEST QUARTER OF SECTION 25, TOWNSHIP 43 SOUTH, RANGE 16 WEST, SALT LAKE BASE AND MERIDIAN AND SOUTH 88°50'38" EAST 354.28 FEET FROM THE WEST QUARTER CORNER OF SAID SECTION 25, AND RUNNING, THENCE SOUTH 87°26'47" EAST 8.24 FEET; THENCE NORTHERLY ALONG A 2045.00 FOOT RADIUS NON-TANGENT CURVE TO THE RIGHT, (LONG CHORD BEARS NORTH 02°01'41" EAST A DISTANCE OF 9.02 FEET, CENTER POINT LIES SOUTH 88°05'54" EAST), THROUGH A CENTRAL ANGLE OF 00°15'10" A DISTANCE OF 9.02 FEET; THENCE SOUTH 87°50'44" EAST 90.00 FEET; THENCE SOUTH 02°09'14" WEST 18.00 FEET; THENCE NORTH 85°45'20" EAST 7.24 FEET; THENCE SOUTH 11°32'43" EAST 2.75 FEET; THENCE SOUTHERLY ALONG A 197.00 FOOT RADIUS NON-TANGENT CURVE TO THE RIGHT, (LONG CHORD BEARS SOUTH 07°12'55" EAST A DISTANCE OF 28.90 FEET, CENTER POINT LIES SOUTH 78°34'42" WEST), THROUGH A CENTRAL ANGLE OF 08°24'47" A DISTANCE OF 28.93 FEET; THENCE SOUTH 03°00'31" EAST 23.83 FEET; THENCE SOUTHERLY ALONG A 291.50 FOOT RADIUS CURVE TO THE LEFT, (LONG CHORD BEARS SOUTH 07°32'08" EAST A DISTANCE OF 46.01 FEET, CENTER POINT LIES NORTH 86°59'29" EAST), THROUGH A CENTRAL ANGLE OF 09°03'13" A DISTANCE OF 46.06 FEET; THENCE SOUTHERLY ALONG A 549.51 FOOT RADIUS COMPOUND CURVE TO THE LEFT, (LONG CHORD BEARS SOUTH 13°47'24" EAST A DISTANCE OF 33.13 FEET, CENTER POINT LIES NORTH 77°56'16" EAST), THROUGH A CENTRAL ANGLE OF 03°27'19" A DISTANCE OF 33.14 FEET; THENCE SOUTH 14°43'54" EAST 65.19 FEET; THENCE SOUTHERLY ALONG A 203.00 FOOT RADIUS CURVE TO THE LEFT, (LONG CHORD BEARS SOUTH 20°39'35" EAST A DISTANCE OF 41.93 FEET, CENTER POINT LIES NORTH 75°16'06" EAST), THROUGH A CENTRAL ANGLE OF 11°51'22" A DISTANCE OF 42.01 FEET; THENCE SOUTHEASTERLY ALONG A 557.00 FOOT RADIUS COMPOUND CURVE TO THE LEFT, (LONG CHORD BEARS SOUTH 26°46'00" EAST A DISTANCE OF 1.54 FEET, CENTER POINT LIES NORTH 63°24'44" EAST), THROUGH A CENTRAL ANGLE OF 00°09'29" A DISTANCE OF 1.54 FEET; THENCE SOUTHEASTERLY ALONG A 2457.00 FOOT RADIUS COMPOUND CURVE TO THE LEFT, (LONG CHORD BEARS SOUTH 27°26'53" EAST A DISTANCE OF 60.24 FEET, CENTER POINT LIES NORTH 63°15'16" EAST), THROUGH A CENTRAL ANGLE OF 01°24'17" A DISTANCE OF 60.24 FEET; THENCE SOUTH 29°05'32" EAST 80.78 FEET; THENCE SOUTHEASTERLY ALONG A 2457.00 FOOT RADIUS NON-TANGENT CURVE TO THE LEFT, (LONG CHORD BEARS SOUTH 32°26'22" EAST A DISTANCE OF 206.23 FEET, CENTER POINT LIES NORTH 59°57'57" EAST), THROUGH A CENTRAL ANGLE OF 04°48'38" A DISTANCE OF 206.29 FEET; THENCE SOUTH 42°32'40" EAST 106.61 FEET; THENCE SOUTHEASTERLY ALONG A 2445.00 FOOT RADIUS NON-TANGENT CURVE TO THE LEFT, (LONG CHORD BEARS SOUTH 39°04'05" EAST A DISTANCE OF 149.08 FEET, CENTER POINT LIES NORTH 52°40'44" EAST), THROUGH A CENTRAL ANGLE OF 03°29'39" A

DISTANCE OF 149.11 FEET; THENCE SOUTHEASTERLY ALONG A 197.00 FOOT RADIUS REVERSE CURVE TO THE RIGHT, (LONG CHORD BEARS SOUTH 37°35'38" EAST A DISTANCE OF 22.14 FEET, CENTER POINT LIES SOUTH 49°11'05" WEST), THROUGH A CENTRAL ANGLE OF 06°26'34" A DISTANCE OF 22.15 FEET; THENCE SOUTH 34°22'21" EAST 62.00 FEET; THENCE SOUTHEASTERLY ALONG A 203.00 FOOT RADIUS CURVE TO THE LEFT, (LONG CHORD BEARS SOUTH 38°56'52" EAST A DISTANCE OF 32.39 FEET, CENTER POINT LIES NORTH 55°37'39" EAST), THROUGH A CENTRAL ANGLE OF 09°09'03" A DISTANCE OF 32.42 FEET; THENCE SOUTHEASTERLY ALONG A 2457.00 FOOT RADIUS COMPOUND CURVE TO THE LEFT, (LONG CHORD BEARS SOUTH 46°09'37" EAST A DISTANCE OF 226.09 FEET, CENTER POINT LIES NORTH 46°28'37" EAST), THROUGH A CENTRAL ANGLE OF 05°16'27" A DISTANCE OF 226.17 FEET; THENCE SOUTHEASTERLY ALONG A 722.00 FOOT RADIUS COMPOUND CURVE TO THE LEFT (LONG CHORD BEARS SOUTH 49°22'39" EAST A DISTANCE OF 14.62 FEET, CENTER POINT LIES NORTH 41°12'09" EAST), THROUGH A CENTRAL ANGLE OF 01°09'36" A DISTANCE OF 14.62 FEET; THENCE SOUTH 60°38'54" EAST 106.45 FEET; THENCE SOUTHEASTERLY ALONG A 710.00 FOOT RADIUS NON-TANGENT CURVE TO THE LEFT, (LONG CHORD BEARS SOUTH 64°04'22" EAST A DISTANCE OF 139.64 FEET, CENTER POINT LIES NORTH 31°34'14" EAST), THROUGH A CENTRAL ANGLE OF 11°17'13" A DISTANCE OF 139.87 FEET; THENCE EASTERLY ALONG A 197.00 FOOT RADIUS REVERSE CURVE TO THE RIGHT, (LONG CHORD BEARS SOUTH 67°30'56" EAST A DISTANCE OF 15.13 FEET, CENTER POINT LIES SOUTH 20°17'01" WEST), THROUGH A CENTRAL ANGLE OF 04°24'06" A DISTANCE OF 15.13 FEET; THENCE SOUTH 65°18'53" EAST 67.22 FEET; THENCE EASTERLY ALONG A 203.00 FOOT RADIUS CURVE TO THE LEFT (LONG CHORD BEARS SOUTH 68°47'12" EAST A DISTANCE OF 24.59 FEET, CENTER POINT LIES NORTH 24°41'07" EAST), THROUGH A CENTRAL ANGLE OF 06°56'39" A DISTANCE OF 24.60 FEET; THENCE SOUTHEASTERLY ALONG A 808.00 FOOT RADIUS REVERSE CURVE TO THE RIGHT, (LONG CHORD BEARS SOUTH 55°06'52" EAST A DISTANCE OF 476.36 FEET, CENTER POINT LIES SOUTH 17°44'29" WEST), THROUGH A CENTRAL ANGLE OF 34°17'18" A DISTANCE OF 483.54 FEET; THENCE SOUTH 37°58'14" EAST 15.80 FEET; THENCE NORTH 52°01'46" EAST 14.00 FEET TO THE SOUTHWESTERLY RIGHT-OF-WAY LINE OF SOUTHERN PARKWAY, UTAH DEPARTMENT OF TRANSPORTATION (UDOT) PROJECT NO. HPP-15-1(56)1/HPP-LC53(33), THENCE ALONG SAID RIGHT-OF-WAY LINE THE FOLLOWING SIX (6) COURSES: 1) SOUTH 37°58'14" EAST 408.51 FEET, 2) SOUTH 38°35'35" EAST 702.55 FEET, 3) SOUTH 37°08'17" EAST 128.76 FEET, 4) SOUTH 40°21'00" EAST 74.61 FEET, 5) SOUTH 35°26'19" EAST 257.64 FEET AND 6) SOUTHEASTERLY ALONG A 3835.00 FOOT RADIUS NON-TANGENT CURVE TO THE RIGHT, (LONG CHORD BEARS SOUTH 38°09'30" EAST A DISTANCE OF 54.09 FEET, CENTER POINT LIES SOUTH 51°26'16" WEST), THROUGH A CENTRAL ANGLE OF 00°48'29" A DISTANCE OF 54.09 FEET, THENCE DEPARTING SAID RIGHT-OF-WAY LINE AND RUNNING SOUTH 61°00'21" WEST 19.13 FEET; THENCE SOUTH 28°59'39" EAST 15.01 FEET; THENCE SOUTHERLY ALONG A 730.00 FOOT RADIUS CURVE TO THE RIGHT, (LONG CHORD BEARS SOUTH 13°39'49" EAST A DISTANCE OF 386.00 FEET, CENTER POINT LIES SOUTH 61°00'21" WEST), THROUGH A CENTRAL ANGLE OF 30°39'40" A DISTANCE OF 390.65 FEET; THENCE SOUTH 01°40'01" WEST 22.96 FEET; THENCE SOUTH 09°01'47" EAST 91.59 FEET; THENCE SOUTH 01°40'01" WEST

74.93 FEET; THENCE SOUTHERLY ALONG A 203.00 FOOT RADIUS CURVE TO THE RIGHT, (LONG CHORD BEARS SOUTH 05°34'48" WEST A DISTANCE OF 27.71 FEET, CENTER POINT LIES NORTH 88°19'59" WEST), THROUGH A CENTRAL ANGLE OF 07°49'36" A DISTANCE OF 27.73 FEET; THENCE SOUTH 09°29'36" WEST 53.42 FEET; THENCE SOUTHERLY ALONG A 197.00 FOOT RADIUS CURVE TO THE LEFT, (LONG CHORD BEARS SOUTH 05°34'48" WEST A DISTANCE OF 26.89 FEET, CENTER POINT LIES SOUTH 80°30'24" EAST), THROUGH A CENTRAL ANGLE OF 07°49'36" A DISTANCE OF 26.91 FEET; THENCE SOUTH 01°40'01" WEST 12.03 FEET; THENCE SOUTHERLY ALONG A 964.00 FOOT RADIUS CURVE TO THE LEFT, (LONG CHORD BEARS SOUTH 02°26'44" EAST A DISTANCE OF 138.26 FEET, CENTER POINT LIES SOUTH 88°19'59" EAST), THROUGH A CENTRAL ANGLE OF 08°13'29" A DISTANCE OF 138.38 FEET; THENCE SOUTH 82°26'32" WEST 72.01 FEET; THENCE NORTHERLY ALONG A 1036.00 FOOT RADIUS NON-TANGENT CURVE TO THE RIGHT, (LONG CHORD BEARS NORTH 02°28'49" WEST A DISTANCE OF 149.84 FEET, CENTER POINT LIES NORTH 83°22'21" EAST), THROUGH A CENTRAL ANGLE OF 08°17'40" A DISTANCE OF 149.97 FEET; THENCE NORTH 01°40'01" EAST 194.35 FEET; THENCE NORTH 05°18'05" WEST 90.67 FEET; THENCE NORTH 01°40'01" EAST 22.96 FEET; THENCE NORTHERLY ALONG A 653.00 FOOT RADIUS CURVE TO THE LEFT, (LONG CHORD BEARS NORTH 00°49'36" WEST A DISTANCE OF 56.82 FEET, CENTER POINT LIES NORTH 88°19'59" WEST), THROUGH A CENTRAL ANGLE OF 04°59'13" A DISTANCE OF 56.84 FEET; THENCE NORTHERLY ALONG A 103.00 FOOT RADIUS REVERSE CURVE TO THE RIGHT, (LONG CHORD BEARS NORTH 01°06'33" WEST A DISTANCE OF 7.95 FEET, CENTER POINT LIES NORTH 86°40'48" EAST), THROUGH A CENTRAL ANGLE OF 04°25'19" A DISTANCE OF 7.95 FEET; THENCE NORTH 01°06'07" EAST 63.57 FEET; THENCE NORTHERLY ALONG A 97.00 FOOT RADIUS CURVE TO THE LEFT, (LONG CHORD BEARS NORTH 05°06'13" WEST A DISTANCE OF 20.97 FEET, CENTER POINT LIES NORTH 88°53'53" WEST), THROUGH A CENTRAL ANGLE OF 12°24'40" A DISTANCE OF 21.01 FEET; THENCE NORTHERLY ALONG A 664.00 FOOT RADIUS COMPOUND CURVE TO THE LEFT, (LONG CHORD BEARS NORTH 20°09'06" WEST A DISTANCE OF 204.14 FEET, CENTER POINT LIES SOUTH 78°41'27" WEST), THROUGH A CENTRAL ANGLE OF 17°41'06" A DISTANCE OF 204.95 FEET; THENCE NORTH 28°59'39" WEST 15.01 FEET; THENCE NORTH 35°57'45" WEST 90.67 FEET; THENCE NORTH 28°59'39" WEST 4.18 FEET; THENCE NORTHWESTERLY ALONG A 753.00 FOOT RADIUS CURVE TO THE LEFT, (LONG CHORD BEARS NORTH 32°00'23" WEST A DISTANCE OF 79.14 FEET, CENTER POINT LIES SOUTH 61°00'21" WEST), THROUGH A CENTRAL ANGLE OF 06°01'28" A DISTANCE OF 79.17 FEET; THENCE NORTH 29°45'55" WEST 58.28 FEET; THENCE NORTHWESTERLY ALONG A 185.50 FOOT RADIUS CURVE TO THE LEFT, (LONG CHORD BEARS NORTH 36°07'03" WEST A DISTANCE OF 41.05 FEET, CENTER POINT LIES SOUTH 60°14'05" WEST), THROUGH A CENTRAL ANGLE OF 12°42'16" A DISTANCE OF 41.13 FEET; THENCE NORTHWESTERLY ALONG A 764.00 FOOT RADIUS COMPOUND CURVE TO THE LEFT, (LONG CHORD BEARS NORTH 42°58'33" WEST A DISTANCE OF 13.50 FEET, CENTER POINT LIES SOUTH 47°31'50" WEST), THROUGH A CENTRAL ANGLE OF 01°00'44" A DISTANCE OF 13.50 FEET; THENCE NORTH 43°28'55" WEST 36.52 FEET; THENCE NORTHWESTERLY ALONG A 785.50 FOOT RADIUS CURVE TO THE LEFT, (LONG CHORD BEARS NORTH 47°17'51" WEST A DISTANCE OF 104.54 FEET, CENTER POINT LIES SOUTH 46°31'05" WEST), THROUGH A CENTRAL ANGLE OF

07°37'52" A DISTANCE OF 104.62 FEET; THENCE WESTERLY ALONG A 100.00 FOOT RADIUS COMPOUND CURVE TO THE LEFT, (LONG CHORD BEARS NORTH 72°00'07" WEST A DISTANCE OF 71.31 FEET, CENTER POINT LIES SOUTH 38°53'13" WEST), THROUGH A CENTRAL ANGLE OF 41°46'40" A DISTANCE OF 72.92 FEET; THENCE SOUTH 87°06'33" WEST 109.24 FEET; THENCE NORTH 88°25'26" WEST 29.90 FEET; THENCE WESTERLY ALONG A 58.50 FOOT RADIUS CURVE TO THE LEFT, (LONG CHORD BEARS SOUTH 74°50'38" WEST A DISTANCE OF 33.68 FEET, CENTER POINT LIES SOUTH 01°34'34" WEST), THROUGH A CENTRAL ANGLE OF 33°27'51" A DISTANCE OF 34.17 FEET; THENCE SOUTH 58°06'43" WEST 67.31 FEET; THENCE SOUTHWESTERLY ALONG A 56.00 FOOT RADIUS CURVE TO THE RIGHT, (LONG CHORD BEARS SOUTH 67°39'27" WEST A DISTANCE OF 18.57 FEET, CENTER POINT LIES NORTH 31°53'17" WEST), THROUGH A CENTRAL ANGLE OF 19°05'28" A DISTANCE OF 18.66 FEET; THENCE SOUTHWESTERLY ALONG A 44.00 FOOT RADIUS REVERSE CURVE TO THE LEFT, (LONG CHORD BEARS SOUTH 67°39'27" WEST A DISTANCE OF 14.59 FEET, CENTER POINT LIES SOUTH 12°47'49" EAST), THROUGH A CENTRAL ANGLE OF 19°05'28" A DISTANCE OF 14.66 FEET; THENCE SOUTH 58°06'43" WEST 191.24 FEET; THENCE NORTH 31°53'17" WEST 6.50 FEET; THENCE SOUTH 58°06'43" WEST 33.61 FEET; THENCE SOUTHWESTERLY ALONG A 291.50 FOOT RADIUS CURVE TO THE LEFT, (LONG CHORD BEARS SOUTH 54°46'14" WEST A DISTANCE OF 33.98 FEET, CENTER POINT LIES SOUTH 31°53'17" EAST), THROUGH A CENTRAL ANGLE OF 06°40'59" A DISTANCE OF 34.00 FEET; THENCE SOUTHWESTERLY ALONG A 733.00 FOOT RADIUS COMPOUND CURVE TO THE LEFT, (LONG CHORD BEARS SOUTH 41°31'05" WEST A DISTANCE OF 252.32 FEET, CENTER POINT LIES SOUTH 38°34'16" EAST), THROUGH A CENTRAL ANGLE OF 19°49'18" A DISTANCE OF 253.58 FEET; THENCE SOUTHERLY ALONG A 22.00 FOOT RADIUS COMPOUND CURVE TO THE LEFT, (LONG CHORD BEARS SOUTH 08°35'55" EAST A DISTANCE OF 28.40 FEET, CENTER POINT LIES SOUTH 58°23'34" EAST), THROUGH A CENTRAL ANGLE OF 80°24'42" A DISTANCE OF 30.68 FEET; THENCE SOUTH 48°48'16" EAST 47.13 FEET; THENCE SOUTH 41°11'44" WEST 63.00 FEET; THENCE NORTH 48°48'16" WEST 8.42 FEET; THENCE WESTERLY ALONG A 21.50 FOOT RADIUS CURVE TO THE LEFT, (LONG CHORD BEARS SOUTH 76°42'32" WEST A DISTANCE OF 35.00 FEET, CENTER POINT LIES SOUTH 41°11'43" WEST), THROUGH A CENTRAL ANGLE OF 108°58'22" A DISTANCE OF 40.89 FEET; THENCE SOUTH 22°23'09" WEST 1.01 FEET; THENCE SOUTHERLY ALONG A 655.34 FOOT RADIUS NON-TANGENT CURVE TO THE LEFT, (LONG CHORD BEARS SOUTH 21°29'19" WEST A DISTANCE OF 21.72 FEET, CENTER POINT LIES SOUTH 67°33'43" EAST), THROUGH A CENTRAL ANGLE OF 01°53'57" A DISTANCE OF 21.72 FEET; THENCE SOUTHWESTERLY ALONG A 744.00 FOOT RADIUS NON-TANGENT CURVE TO THE RIGHT, (LONG CHORD BEARS SOUTH 25°00'53" WEST A DISTANCE OF 113.88 FEET, CENTER POINT LIES NORTH 69°22'29" WEST), THROUGH A CENTRAL ANGLE OF 08°46'42" A DISTANCE OF 113.99 FEET; THENCE SOUTHWESTERLY ALONG A 195.00 FOOT RADIUS COMPOUND CURVE TO THE RIGHT, (LONG CHORD BEARS SOUTH 35°45'09" WEST A DISTANCE OF 45.13 FEET, CENTER POINT LIES NORTH 60°35'46" WEST), THROUGH A CENTRAL ANGLE OF 12°41'50" A DISTANCE OF 43.21 FEET; THENCE SOUTH 42°06'04" WEST 75.00 FEET; THENCE SOUTHWESTERLY ALONG A 732.00 FOOT RADIUS NON-TANGENT CURVE TO THE RIGHT, (LONG CHORD BEARS SOUTH 64°24'17" WEST A DISTANCE OF 639.03 FEET,

CENTER POINT LIES NORTH 61°28'32" WEST), THROUGH A CENTRAL ANGLE OF 51°45'39" A DISTANCE OF 661.29 FEET; THENCE SOUTHWESTERLY ALONG A 21.50 FOOT RADIUS REVERSE CURVE TO THE LEFT, (LONG CHORD BEARS SOUTH 47°03'15" WEST A DISTANCE OF 29.45 FEET, CENTER POINT LIES SOUTH 00°17'07" WEST), THROUGH A CENTRAL ANGLE OF 86°27'43" A DISTANCE OF 32.44 FEET; THENCE SOUTH 03°49'24" WEST 11.67 FEET; THENCE NORTH 86°10'36" WEST 50.00 FEET; THENCE NORTH 03°49'24" EAST 11.67 FEET; THENCE NORTHWESTERLY ALONG A 21.50 FOOT RADIUS CURVE TO THE LEFT, (LONG CHORD BEARS NORTH 38°58'24" WEST A DISTANCE OF 29.21 FEET, CENTER POINT LIES NORTH 86°10'36" WEST), THROUGH A CENTRAL ANGLE OF 85°35'36" A DISTANCE OF 32.12 FEET; THENCE NORTH 02°21'12" EAST 64.27 FEET; THENCE SOUTH 85°41'34" EAST 81.73 FEET; THENCE NORTHEASTERLY ALONG A 668.00 FOOT RADIUS NON-TANGENT CURVE TO THE LEFT (LONG CHORD BEARS NORTH 55°42'45" EAST A DISTANCE OF 767.96 FEET, CENTER POINT LIES NORTH 00°47'59" EAST), THROUGH A CENTRAL ANGLE OF 70°10'28" A DISTANCE OF 818.15 FEET; THENCE NORTHEASTERLY ALONG A 797.00 FOOT RADIUS REVERSE CURVE TO THE RIGHT, (LONG CHORD BEARS NORTH 23°15'04" EAST A DISTANCE OF 73.02 FEET, CENTER POINT LIES SOUTH 69°22'29" EAST), THROUGH A CENTRAL ANGLE OF 05°15'04" A DISTANCE OF 73.04 FEET; THENCE NORTH 29°03'28" EAST 88.46 FEET; THENCE NORTHEASTERLY ALONG A 797.00 FOOT RADIUS NON-TANGENT CURVE TO THE RIGHT, (LONG CHORD BEARS NORTH 35°57'33" EAST A DISTANCE OF 103.43 FEET, CENTER POINT LIES SOUTH 57°45'40" EAST), THROUGH A CENTRAL ANGLE OF 07°26'26" A DISTANCE OF 103.50 FEET; THENCE NORTH 39°40'46" EAST 42.47 FEET; THENCE NORTHEASTERLY ALONG A 573.50 FOOT RADIUS CURVE TO THE RIGHT, (LONG CHORD BEARS NORTH 46°12'14" EAST A DISTANCE OF 130.33 FEET, CENTER POINT LIES SOUTH 50°19'14" EAST), THROUGH A CENTRAL ANGLE OF 13°02'55" A DISTANCE OF 130.61 FEET; THENCE NORTHEASTERLY ALONG A 808.50 FOOT RADIUS COMPOUND CURVE TO THE RIGHT, (LONG CHORD BEARS NORTH 55°04'46" EAST A DISTANCE OF 66.34 FEET, CENTER POINT LIES SOUTH 37°16'19" EAST), THROUGH A CENTRAL ANGLE OF 04°42'09" A DISTANCE OF 66.36 FEET; THENCE NORTH 32°34'10" WEST 1.56 FEET; THENCE NORTH 58°06'43" EAST 181.21 FEET; THENCE NORTHEASTERLY ALONG A 136.50 FOOT RADIUS CURVE TO THE LEFT, (LONG CHORD BEARS NORTH 37°26'20" EAST A DISTANCE OF 96.38 FEET, CENTER POINT LIES NORTH 31°53'17" WEST), THROUGH A CENTRAL ANGLE OF 41°20'47" A DISTANCE OF 98.50 FEET; THENCE NORTH 16°45'56" EAST 71.26 FEET; THENCE NORTH 14°57'04" EAST 21.53 FEET; THENCE NORTHERLY ALONG A 127.50 FOOT RADIUS NON-TANGENT CURVE TO THE LEFT, (LONG CHORD BEARS NORTH 03°07'22" WEST A DISTANCE OF 111.05 FEET, CENTER POINT LIES NORTH 67°18'27" WEST), THROUGH A CENTRAL ANGLE OF 51°37'51" A DISTANCE OF 114.89 FEET; THENCE NORTH 28°56'18" WEST 101.78 FEET; THENCE NORTH 29°49'52" WEST 77.84 FEET; THENCE NORTHWESTERLY ALONG A 951.00 FOOT RADIUS NON-TANGENT CURVE TO THE LEFT, (LONG CHORD BEARS NORTH 34°54'05" WEST A DISTANCE OF 101.83 FEET, CENTER POINT LIES SOUTH 58°10'03" WEST), THROUGH A CENTRAL ANGLE OF 06°08'17" A DISTANCE OF 101.88 FEET; THENCE NORTH 37°58'14" WEST 426.72 FEET; THENCE NORTH 46°17'30" WEST 82.96 FEET; THENCE NORTHWESTERLY ALONG A 704.00 FOOT RADIUS NON-TANGENT CURVE TO THE LEFT, (LONG CHORD BEARS NORTH 44°24'34" WEST A DISTANCE OF 151.73

FEET, CENTER POINT LIES SOUTH 51°46'38" WEST), THROUGH A CENTRAL ANGLE OF 12°22'23" A DISTANCE OF 152.03 FEET; THENCE NORTH 48°31'21" WEST 14.27 FEET; THENCE NORTH 46°27'29" WEST 55.90 FEET; THENCE NORTHWESTERLY ALONG A 199.00 FOOT RADIUS CURVE TO THE LEFT, (LONG CHORD BEARS NORTH 53°13'24" WEST A DISTANCE OF 46.89 FEET, CENTER POINT LIES SOUTH 43°32'31" WEST, THROUGH A CENTRAL ANGLE OF 13°31'50") 46.99 FEET; THENCE NORTHWESTERLY ALONG A 716.00 FOOT RADIUS COMPOUND CURVE TO THE LEFT, (LONG CHORD BEARS NORTH 64°46'23" WEST A DISTANCE OF 119.44 FEET, CENTER POINT LIES SOUTH 30°00'41" WEST), THROUGH A CENTRAL ANGLE OF 09°34'09" A DISTANCE OF 119.58 FEET; THENCE NORTH 72°36'22" WEST 78.36 FEET; THENCE NORTHWESTERLY ALONG A 814.00 FOOT RADIUS NON-TANGENT CURVE TO THE RIGHT, (LONG CHORD BEARS NORTH 65°36'00" WEST A DISTANCE OF 248.71 FEET, CENTER POINT LIES NORTH 15°36'45" EAST), THROUGH A CENTRAL ANGLE OF 17°34'29" A DISTANCE OF 249.68 FEET; THENCE NORTH 62°57'15" WEST 78.03 FEET; THENCE NORTHWESTERLY ALONG A 826.00 FOOT RADIUS NON-TANGENT CURVE TO THE RIGHT, (LONG CHORD BEARS NORTH 50°06'37" WEST A DISTANCE OF 37.85 FEET, CENTER POINT LIES NORTH 38°34'37" EAST), THROUGH A CENTRAL ANGLE OF 02°37'32" A DISTANCE OF 37.85 FEET; THENCE NORTHWESTERLY ALONG A 2561.00 FOOT RADIUS COMPOUND CURVE TO THE RIGHT, (LONG CHORD BEARS NORTH 48°10'40" WEST A DISTANCE OF 55.39 FEET, CENTER POINT LIES NORTH 41°12'09" EAST), THROUGH A CENTRAL ANGLE OF 01°14'21" A DISTANCE OF 55.39 FEET; THENCE NORTHWESTERLY ALONG A 201.00 FOOT RADIUS COMPOUND CURVE TO THE RIGHT, (LONG CHORD BEARS NORTH 42°43'37" WEST A DISTANCE OF 33.86 FEET, CENTER POINT LIES NORTH 42°26'31" EAST), THROUGH A CENTRAL ANGLE OF 09°39'44" A DISTANCE OF 33.90 FEET; THENCE NORTH 37°53'45" WEST 53.20 FEET; THENCE NORTHWESTERLY ALONG A 199.00 FOOT RADIUS CURVE TO THE LEFT, (LONG CHORD BEARS NORTH 41°28'48" WEST A DISTANCE OF 24.88 FEET, CENTER POINT LIES SOUTH 52°06'15" WEST), THROUGH A CENTRAL ANGLE OF 07°10'06" A DISTANCE OF 24.90 FEET; THENCE NORTHWESTERLY ALONG A 2549.00 FOOT RADIUS REVERSE CURVE TO THE RIGHT, (LONG CHORD BEARS NORTH 44°50'28" WEST A DISTANCE OF 19.84 FEET, CENTER POINT LIES NORTH 44°56'09" EAST), THROUGH A CENTRAL ANGLE OF 00°26'46" A DISTANCE OF 19.84 FEET; THENCE NORTH 43°45'27" WEST 76.57 FEET; THENCE NORTHWESTERLY ALONG A 2549.00 FOOT RADIUS NON-TANGENT CURVE TO THE RIGHT, (LONG CHORD BEARS NORTH 39°55'07" WEST A DISTANCE OF 264.88 FEET, CENTER POINT LIES NORTH 47°06'11" EAST), THROUGH A CENTRAL ANGLE OF 05°57'24" A DISTANCE OF 265.00 FEET; THENCE NORTH 45°31'23" WEST 73.50 FEET; THENCE NORTHWESTERLY ALONG A 2561.00 FOOT RADIUS NON-TANGENT CURVE TO THE RIGHT, (LONG CHORD BEARS NORTH 34°16'17" WEST A DISTANCE OF 93.20 FEET, CENTER POINT LIES NORTH 54°41'09" EAST), THROUGH A CENTRAL ANGLE OF 02°05'07" A DISTANCE OF 93.21 FEET; THENCE NORTHWESTERLY ALONG A 201.00 FOOT RADIUS COMPOUND CURVE TO THE RIGHT, (LONG CHORD BEARS NORTH 28°18'39" WEST A DISTANCE OF 34.46 FEET, CENTER POINT LIES NORTH 56°46'17" EAST), THROUGH A CENTRAL ANGLE OF 09°50'09" A DISTANCE OF 34.51 FEET; THENCE NORTH 24°24'31" WEST 62.75 FEET; THENCE NORTHWESTERLY ALONG A 199.00 FOOT RADIUS CURVE TO THE LEFT, (LONG CHORD BEARS NORTH 27°29'46" WEST A DISTANCE OF 21.43 FEET, CENTER

POINT LIES SOUTH 65°35'27" WEST), THROUGH A CENTRAL ANGLE OF 06°10'25" A DISTANCE OF 21.44 FEET; THENCE NORTHWESTERLY ALONG A 2549.00 FOOT RADIUS REVERSE CURVE TO THE RIGHT, (LONG CHORD BEARS NORTH 30°07'36" WEST A DISTANCE OF 40.58 FEET, CENTER POINT LIES NORTH 59°25'02" EAST), THROUGH A CENTRAL ANGLE OF 00°54'44" A DISTANCE OF 40.58 FEET; THENCE NORTH 28°53'33" WEST 69.24 FEET; THENCE NORTHWESTERLY ALONG A 2549.00 FOOT RADIUS NON-TANGENT CURVE TO THE RIGHT, (LONG CHORD BEARS NORTH 27°25'48" WEST A DISTANCE OF 60.88 FEET, CENTER POINT LIES NORTH 61°53'09" EAST), THROUGH A CENTRAL ANGLE OF 01°22'07" A DISTANCE OF 60.89 FEET; THENCE NORTHERLY ALONG A 649.00 FOOT RADIUS COMPOUND CURVE TO THE RIGHT, (LONG CHORD BEARS NORTH 16°45'05" WEST A DISTANCE OF 225.27 FEET, CENTER POINT LIES NORTH 63°15'16" EAST); THROUGH A CENTRAL ANGLE OF 19°59'19" A DISTANCE OF 226.41 FEET; THENCE NORTH 07°10'10" WEST 75.09 FEET TO THE POINT OF BEGINNING.

ENCOMPASSES 601,998 SQUARE FEET OR 13.82 ACRES.

SURVEYOR'S CERTIFICATE

I, B. GUDGELL, a duly Licensed Surveyor in the State of Utah, do hereby certify that the foregoing is a true and correct copy of the original record of this survey as shown on the plan attached hereto, and that the same has been correctly surveyed and will be staked on the ground as shown on this plan.



OWNER'S DEDICATION

DESERT COLOR PARKWAY & LAGOON PARKWAY
I, the undersigned, do hereby dedicate to the public the above described tract of land, together with all the appurtenances thereto, for the purpose of being used as a public highway, to be known as **DESERT COLOR PARKWAY & LAGOON PARKWAY**.

STATE OF UTAH

OFFICE OF PUBLIC UTILITIES

I, **John L. Burt**, Public Utilities Commissioner, do hereby certify that the foregoing is a true and correct copy of the original record of this survey as shown on the plan attached hereto, and that the same has been correctly surveyed and will be staked on the ground as shown on this plan.

NARRATIVE

1. PUBLIC UTILITY AND CHANGED EASEMENTS EXIST ALONG THE RIGHT-OF-WAY LINES, AS SHOWN ON OTHERWISE NOTED ON THIS PLAN.

BOUNDARY DESCRIPTION

LOCATED IN
NORTHWEST, SOUTHWEST & SOUTHEAST 1/4 OF SECTION 25,
TOWNSHIP 43 SOUTH, RANGE 16 WEST,
SALT LAKE BASE AND MERIDIAN
DESERT COLOR PARKWAY & LAGOON PARKWAY

THE AREA FOR CONSTRUCTION OF A PUBLIC PARKWAY... (Detailed boundary description text describing the location and boundaries of the desert color parkway and lagoon parkway in section 25, township 43 south, range 16 west. The text describes a 160-foot wide parkway and a 50-foot wide lagoon, along with various easements and survey points.)

BOUNDARY DESCRIPTION CONTINUED

THESE SURVEYED ALONG A 200.00 FOOT BOUNDARY... (Continuation of the boundary description text, detailing the northern, western, and eastern boundaries of the parkway and lagoon area, including specific measurements and bearings.)

**ROAD DEDICATION FOR
DESERT COLOR PARKWAY
& LAGOON PARKWAY**

LOCATED IN
NORTHWEST, SOUTHWEST & SOUTHEAST 1/4 OF SECTION 25,
TOWNSHIP 43 SOUTH, RANGE 16 WEST,
SALT LAKE BASE AND MERIDIAN

ROAD DEDICATION PLAT

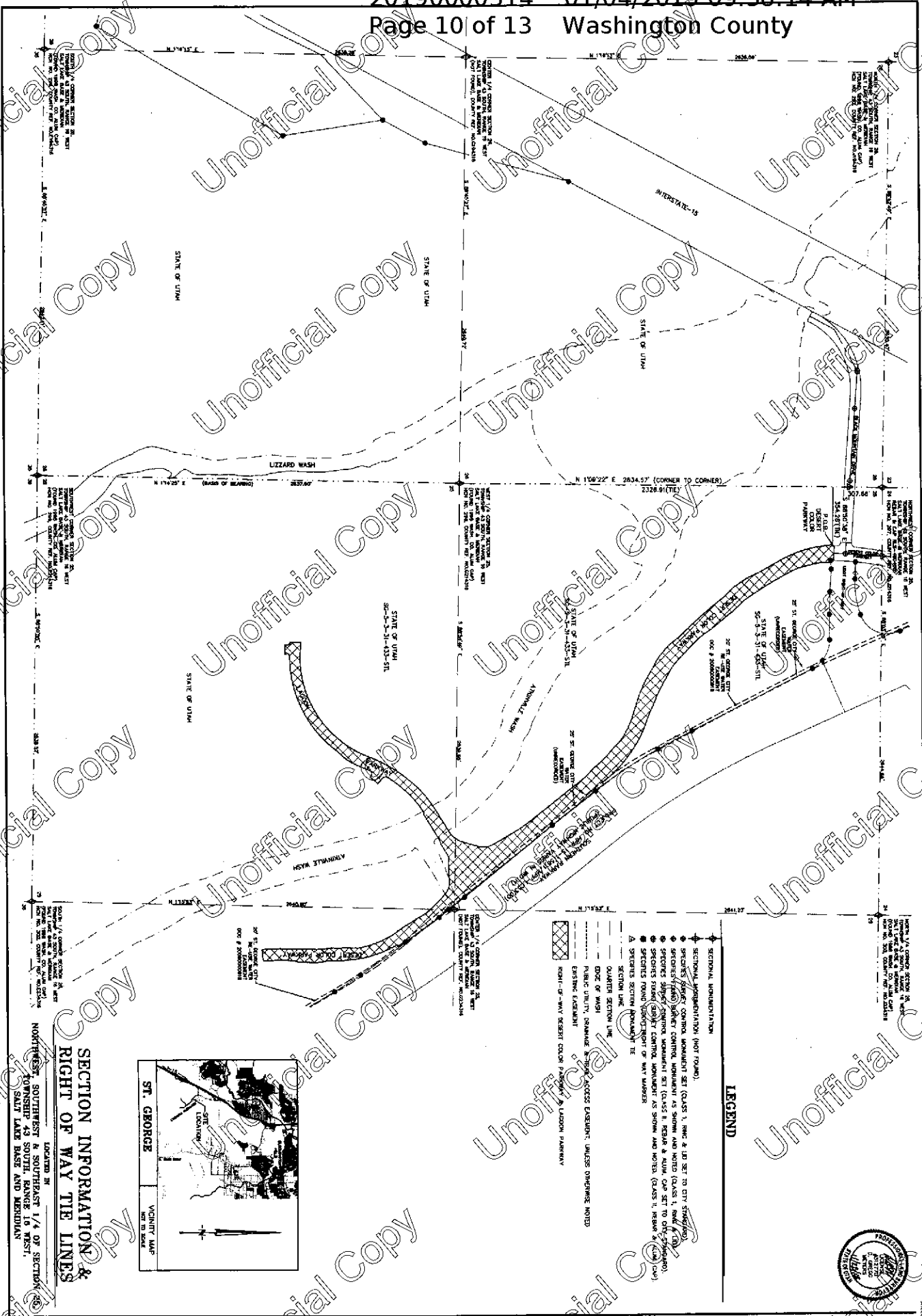
LOCATED IN
NORTHWEST, SOUTHWEST & SOUTHEAST 1/4 OF SECTION 25,
TOWNSHIP 43 SOUTH, RANGE 16 WEST,
SALT LAKE BASE AND MERIDIAN

Scale: 1" = 200.00 Feet
Color: Blue = Proposed Roadway
Red = Existing Roadway
Yellow = Easement

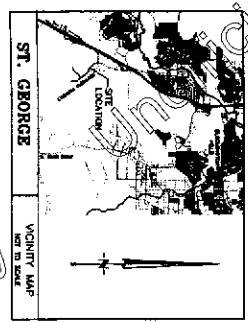
BUSH & GUDGELL, INC.
Engineers - Planners - Surveyors
1123 East 2000 South, Suite 101
Salt Lake City, UT 84119
Phone: (801) 487-8227
Fax: (801) 487-3151
www.bushandgudgell.com

Table with 5 columns: Parcel ID, Owner Name, Address, and other administrative fields. Includes entries like 'City of Salt Lake' and 'Desert Color Parkway'.



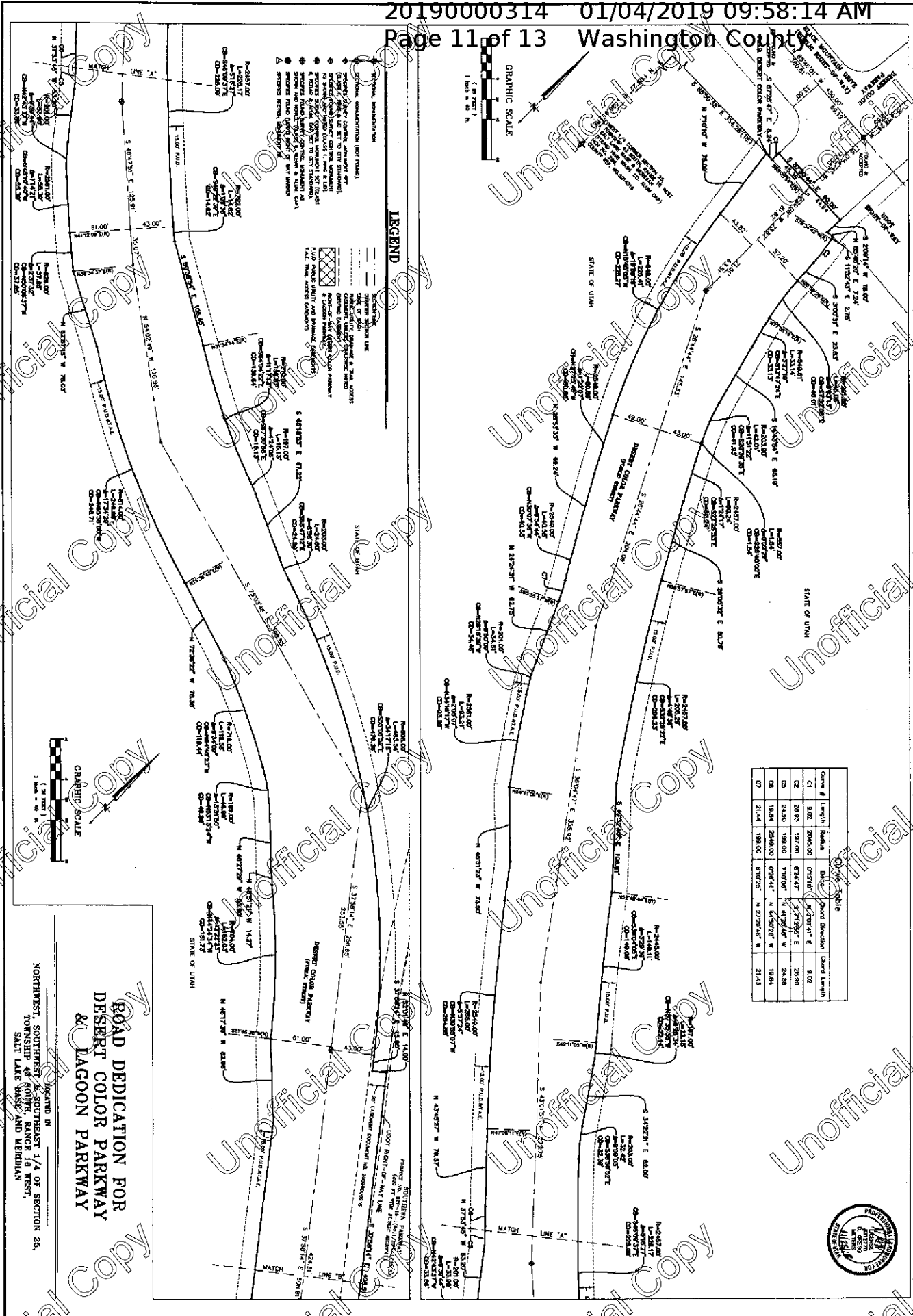


SECTION INFORMATION & RIGHT OF WAY TIE LINES



LOCATED IN NORTHWEST, SOUTHWEST & SOUTHEAST 1/4 OF SECTION 26, TOWNSHIP 43 SOUTH, RANGE 16 EAST, SALT LAKE BASE AND MERIDIAN

<p>ROAD DEDICATION PLAN</p> <p>LOCATED IN NORTHWEST, SOUTHWEST & SOUTHEAST 1/4 OF SECTION 26, TOWNSHIP 43 SOUTH, RANGE 16 EAST, SALT LAKE BASE AND MERIDIAN</p>		<p>Drawn: [Name], Date: [Date]</p> <p>Checked: [Name]</p> <p>Approved: [Name]</p> <p>Scale: 1" = 200'</p> <p>Job No.: [Number]</p>	<p>BUSH & GUDGELL, INC.</p> <p>Engineers - Planners - Surveyors</p> <p>1000 S. [Address]</p> <p>St. George, UT 84770</p> <p>Phone: (435) 771-1111 Fax: (435) 771-1111</p> <p>www.bushandgudgell.com</p>	<p>PROFESSIONAL ENGINEER</p> <p>STATE OF UTAH</p> <p>NO. [Number]</p> <p>EXPIRES [Date]</p>
--	--	--	--	---



ROAD DEDICATION FOR
DESERT COLOR PARKWAY
& LAGOON PARKWAY

LOCATED IN
NORTHWEST, SOUTHWEST & SOUTHEAST 1/4 OF SECTION 26,
TOWNSHIP 48 SOUTH, RANGE 18 WEST,
SALT LAKE BASIN AND MERIDIAN

ROAD DEDICATION PLAT

LOCATED IN
NORTHWEST, SOUTHWEST & SOUTHEAST 1/4 OF SECTION 26,
TOWNSHIP 48 SOUTH, RANGE 18 WEST,
SALT LAKE BASIN AND MERIDIAN

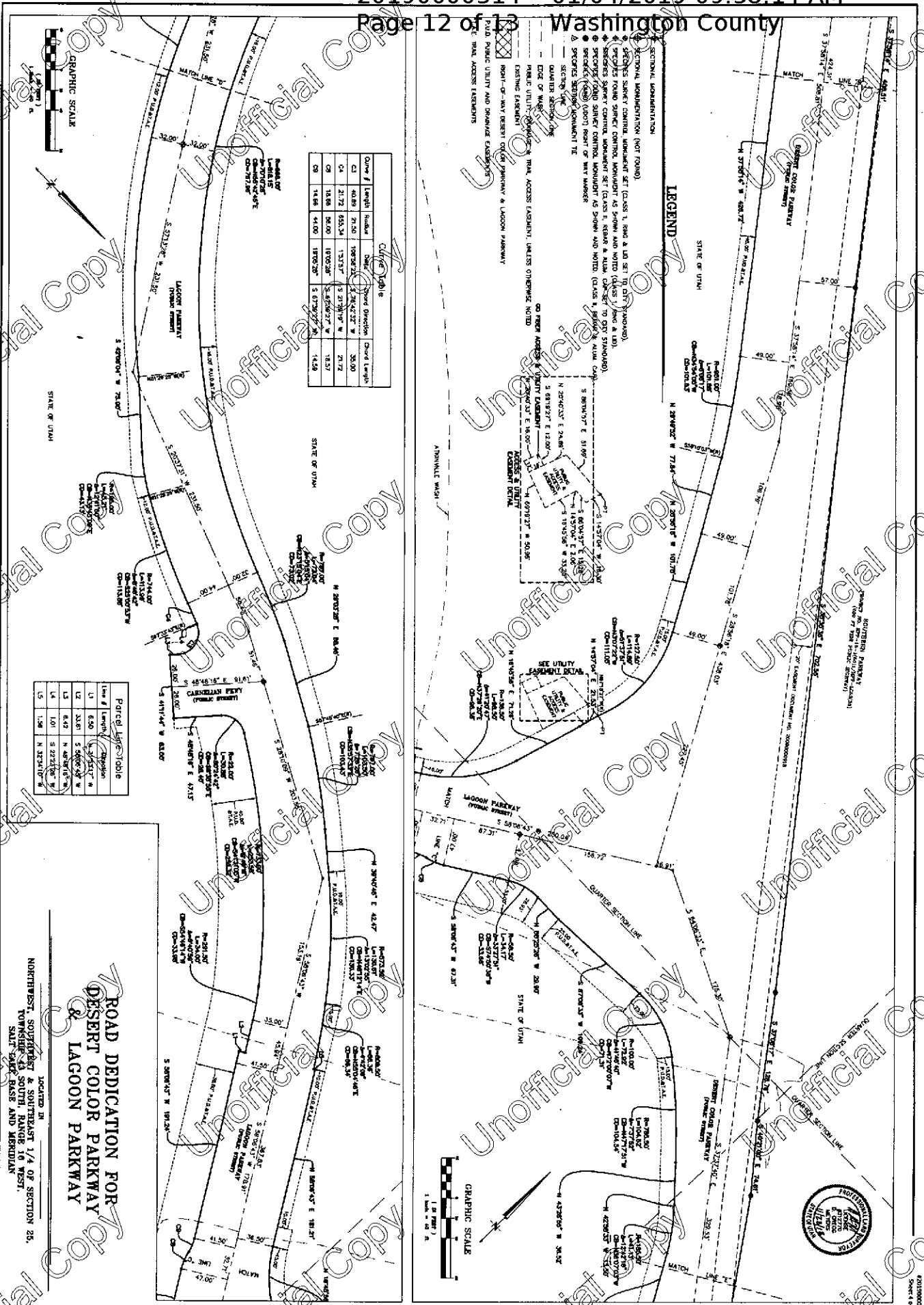
Scale: 1" = 200'
Checked: ESM
Approved: ESM
Date: 1/4/19
Book No: 12152



BUSH & GUGGELL, INC.
Engineers - Planners - Surveyors
100 West 1000 South
Salt Lake City, UT 84119
Phone: 313.2200
www.bushandguggell.com



Drawn: [Name]
Checked: [Name]
Approved: [Name]
Date: [Date]



Curve #	Length	Radius	Chord	Chord Direction	Chord Length
C1	40.89	21.50	109.92	S 24.42° 22' W	30.00
C2	21.72	553.34	1.3137	S 21.70° 19' W	21.72
C3	15.88	361.00	1.0052	S 55.60° 27' W	15.87
C4	14.88	41.00	1.9702	S 07.29° 17' W	14.29

Lot #	Length	Direction
L1	6.50	S 45.00° 00' W
L2	3.50	S 90.00° 00' W
L3	6.49	N 49.91° 00' W
L4	1.01	S 22.22° 00' W
L5	1.98	N 32.22° 00' W

**ROAD DEDICATION FOR
DESERT COLOR PARKWAY
& LAGOON PARKWAY**

LOCATED IN
NORTHWEST, SOUTHWEST & SOUTHEAST 1/4 OF SECTION 25,
TOWNSHIP 43 SOUTH RANGE 16 WEST,
SALT LAKE BASE AND MERIDIAN

ROAD DEDICATION PLAN

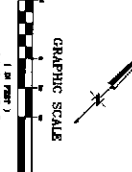
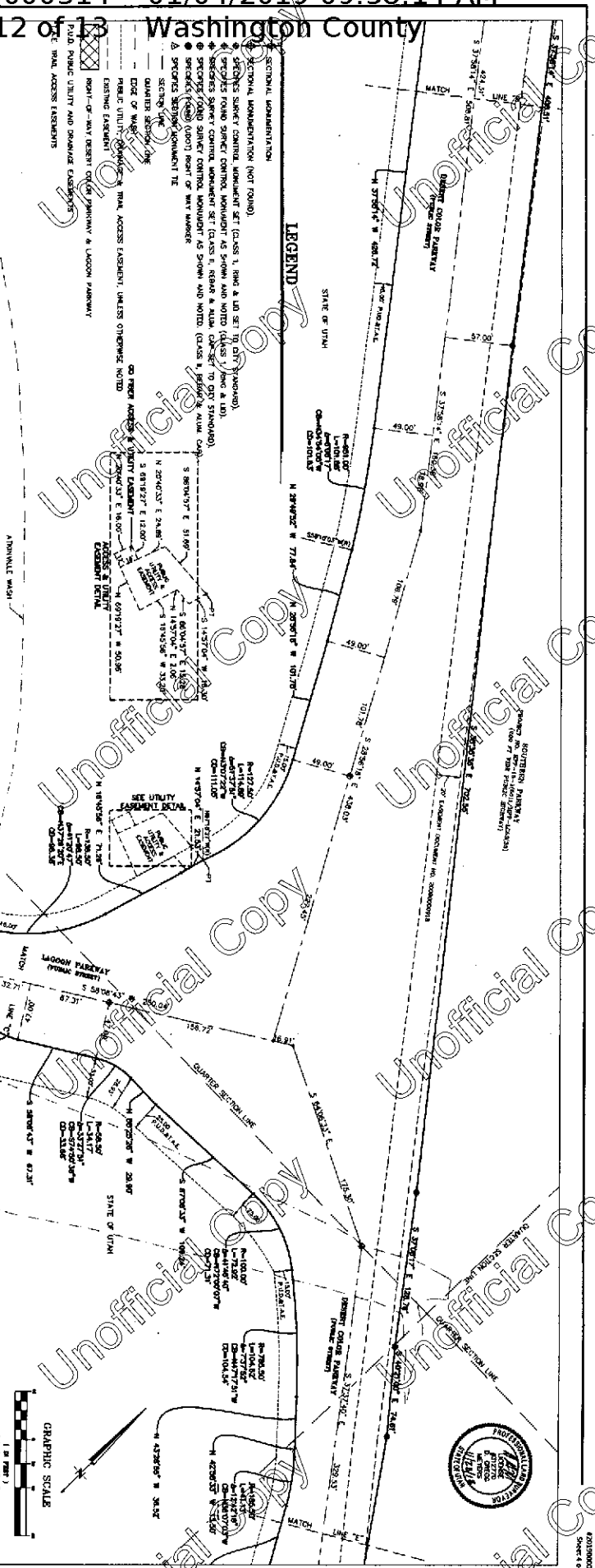
DATE: 11/15/18

PROJECT: 1808

CLIENT: [REDACTED]

SCALE: AS SHOWN

DATE: 11/15/18



BUSH & GUDGELL, INC.
Engineers - Planners - Surveyors

303 East Taylor Road Suite 201
Salt Lake City, Utah 84111
Phone: 313.717.7171 Fax: 313.717.7172
www.bushandgudgell.com

