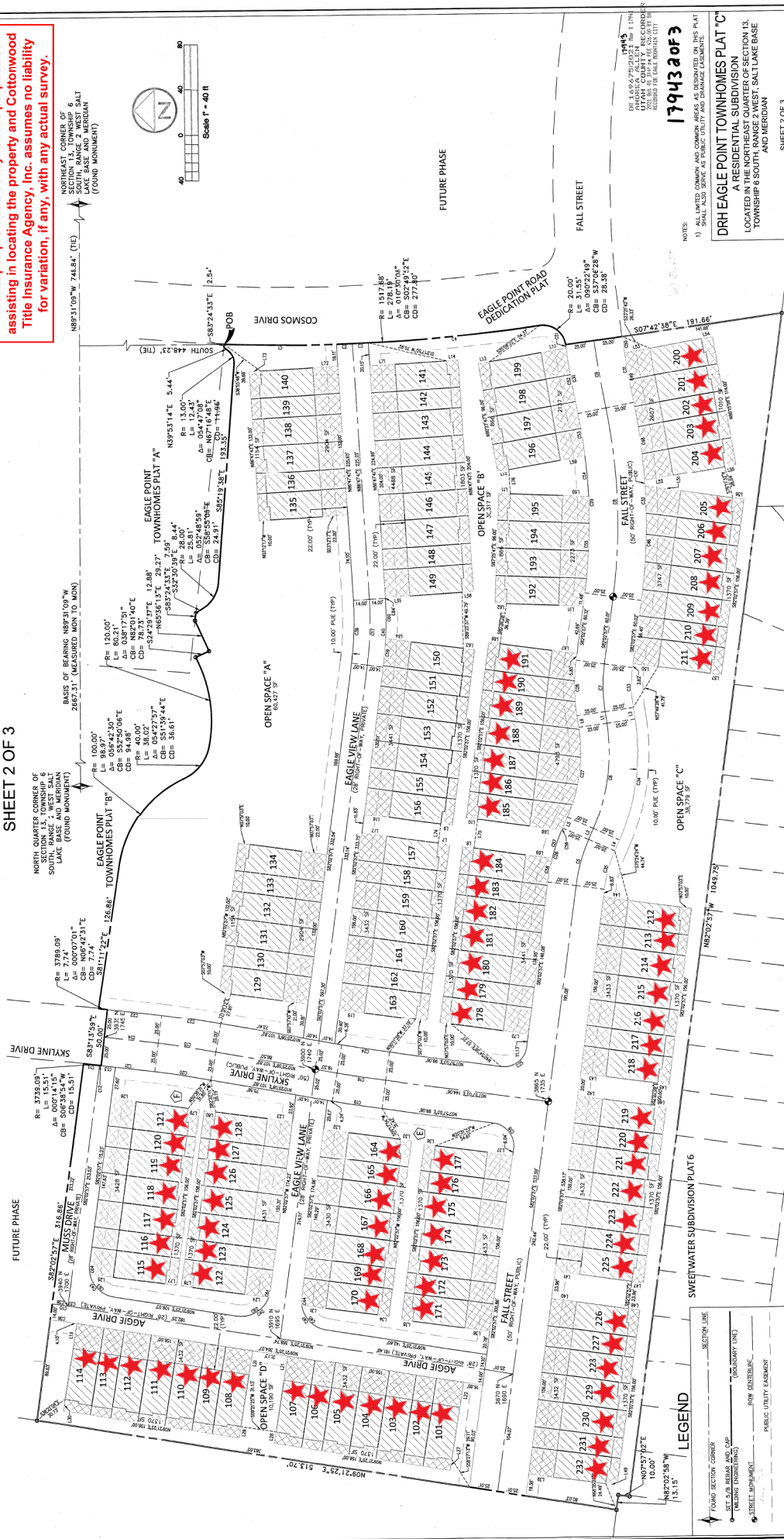




# DRH EAGLE POINT TOWNHOMES PLAT "C"

A RESIDENTIAL SUBDIVISION  
 LOCATED IN THE NORTHEAST QUARTER OF SECTION 13, TOWNSHIP 6 SOUTH, RANGE 2 WEST, SALT LAKE BASE AND MERIDIAN  
 EAGLE MOUNTAIN CITY, UTAH COUNTY, UTAH  
 SHEET 2 OF 3

This map is provided solely for the purpose of assisting in locating the property and Cottonwood Title Insurance Agency, Inc. assumes no liability for variation, if any, with any actual survey.



NOTES:  
 1) ALL LIMITED COMMON AND COMMON AREAS AS DESCRIBED ON THIS PLAT SHALL ALSO SERVE AS PUBLIC UTILITY AND DRAINAGE EASEMENTS.  
 179432013

DRH EAGLE POINT TOWNHOMES PLAT "C"  
 A RESIDENTIAL SUBDIVISION  
 LOCATED IN THE NORTHEAST QUARTER OF SECTION 13,  
 TOWNSHIP 6 SOUTH, RANGE 2 WEST, SALT LAKE BASE  
 AND MERIDIAN

SHEET 2 OF 3

**WILDING**  
 ENGINEERING  
 14251 BIRCH HARBOR CREST WAY  
 SUITE 100, SALT LAKE CITY, UT 84119  
 WWW.WILDINGENGINEERING.COM

**LEGEND**

- FOUND SECTION CORNER
- SEE S.B. RECORD AND CUP (WELDING DISCREPANCY)
- STREET MONUMENT
- SECTION LINE
- BOUNDARY LINE
- ROW CENTERLINE
- PUBLIC UTILITY EASEMENT
- ADJACENT PROPERTY / ROW USE
- PRIVATE AREA
- LIMITED COMMON AREA
- COMMON AREA (EXCEPT FOR RIGHT-OF-WAYS)
- OPEN SPACE "C" (8,114 SF)
- OPEN SPACE "B" (7,609 SF)

