

5-1

12397711
10/26/2016 08:10 AM \$0.00
Book - 10492 Pg - 1459-1463
GARY W. OTT
RECORDER, SALT LAKE COUNTY, UTAH
SANDY CITY RECORDER
10000 CENTENNIAL PARKWAY
SANDY UT 84070
BY: EEA, DEPUTY - WI 5 P.

When recorded please return to:
Sandy City Recorder
10000 Centennial Parkway
Sandy, Utah 84070

Address 9000 S. 910 E. Sandy UT Parcel ID# 28-05-178-005-000 28-05-179-001
-000

GRANT OF EASEMENT FOR WATER LINES

Miller Cobblegate Partners, LLC a limited liability company residing in Salt Lake County, Utah, Grantor, hereby grant, convey and warrant to SANDY CITY CORPORATION, a Utah municipal corporation, Grantee, for good and valuable consideration, the receipt and adequacy of which is hereby acknowledged, a permanent easement and access right-of-way for the construction, repair, maintenance, inspection, replacement or removal of water pipelines for the transportation of water through, across, over and under the described premises, together with all rights of ingress, and egress along said easement necessary or convenient for the full and complete use, occupation and enjoyment of the easement hereby granted and all rights and privileges incident thereto, including the right to cut and remove timber, trees, brush, overhanging branches and other obstructions which may injure or interfere with the Grantees use, occupation and enjoyment of this easement, the right to go upon so much of Grantors property as is reasonably necessary to complete the construction of the pipelines, and the right to place dirt, materials and equipment upon Grantors property near or adjacent to the easement. The easement is more particularly described as the following property in Salt Lake County, Utah:

See Attached Exhibit

This easement shall be binding on the Grantor and Grantee and their respective successors and assigns.

WITNESS the hand of said Grantor this 25 day of October, A.D. 201X.

By [Signature]

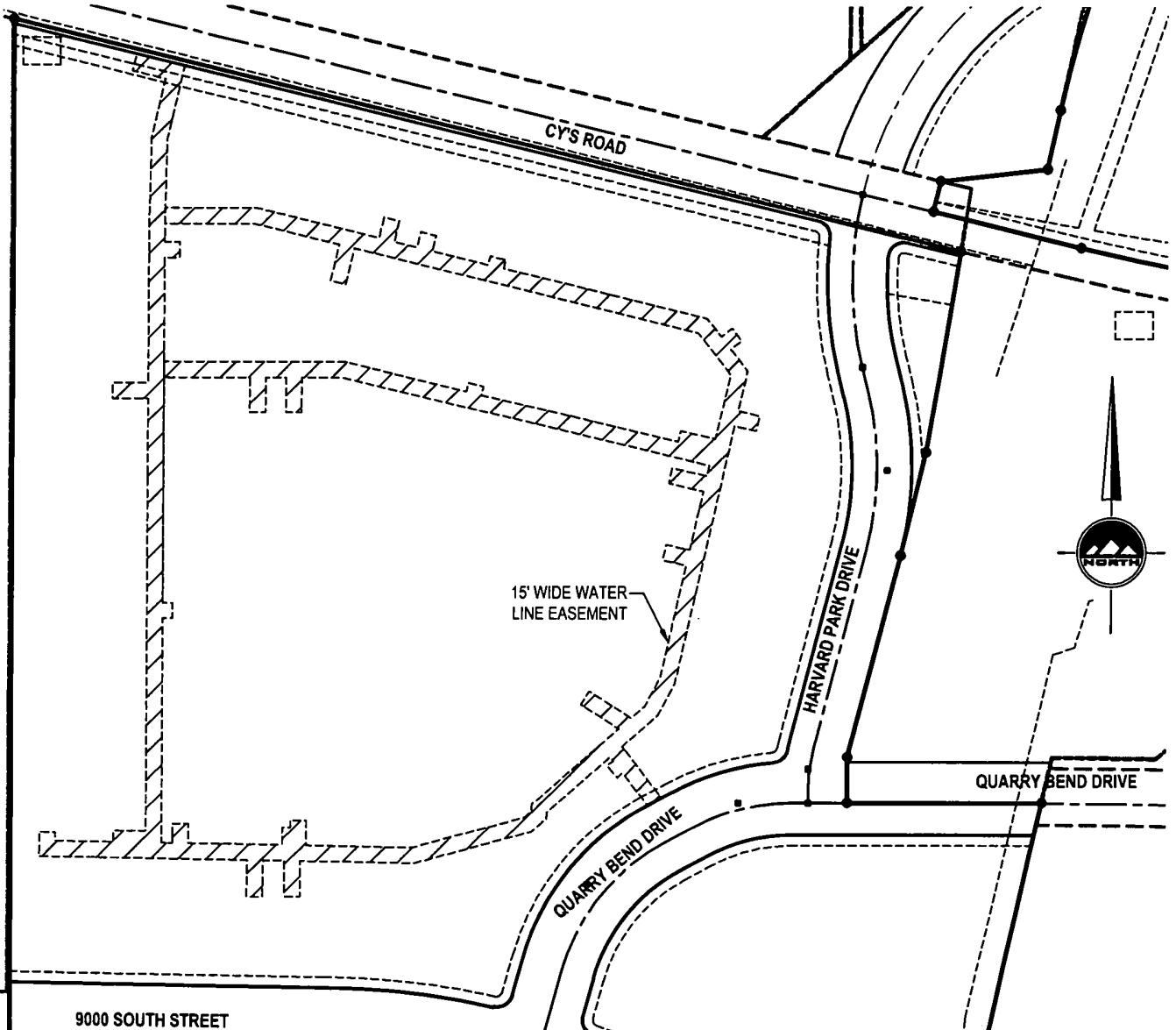
STATE OF UTAH)
: ss
County of Salt Lake)

On the 25th day of October, 2016 A.D. 201X, personally appeared before me Jay Minnick who acknowledged that he signed the foregoing instrument.

[Signature]
Notary Public Residing at
Sandy, Utah

My Commission Expires: Nov. 18, 2019





Cobblegate Apartments -Water Line Easement

Beginning at a point on the Northernly Right-of-Way Line of Quarry Bend Drive, said point being South 89°52'49" East 621.86 feet and North 334.09 feet the Southeast Corner of the Westerly Half of the Northwest Quarter of Section 5, Township 3 South, Range 1 East, Salt Lake Base & Meridian, said Southeast Corner of the Westerly Half of the Northwest Quarter point being South 89°52'49" East along the Section Line 1311.78 feet from the West Quarter Corner of said Section 5, said West Quarter Corner being South 08°24'25" East 75.02 Feet from a found brass cap monument located in the intersection of 9000 South Street and 700 East Street; and running thence South 61°30'47" West 15.19 feet along the Northernly Right-of-Way Line of said Quarry Bend Drive; thence North 37°38'05" West 39.29 feet; thence South 50°05'45" West 6.89 feet; thence North 39°54'15" West 15.00 feet; thence North 50°05'45" East 7.28 feet; thence North 37°38'05" West 4.50 feet; thence South 48°37'31" West 80.31 feet; thence South 03°38'21" West 6.48 feet; thence South 48°22'28" West 18.55 feet; thence South 74°47'38" West 116.43 feet; thence North 89°02'06" West 109.03 feet; thence South 00°00'36" East 33.99 feet; thence South 89°59'24" West 15.00 feet; thence North 00°00'36" West 34.25 feet; thence North 89°02'06" West 20.41 feet; thence South 00°57'54" West 35.04 feet; thence North 89°02'06" West 15.00 feet; thence North 00°57'54" East 35.04 feet; thence North 89°02'06" West 198.62 feet; thence North 00°57'54" East 23.50 feet; thence South 89°02'06" East 15.00 feet; thence South 00°57'54" West 8.50 feet; thence South 89°02'06" East 55.57 feet; thence North 00°57'54" East 10.98 feet; thence North 89°59'24" East 31.12 feet; thence North 00°00'36" West 414.57 feet; thence South 89°59'24" West 34.00 feet; thence North 00°00'36" West 15.00 feet; thence North 89°59'24" East 34.00 feet; thence North 00°00'36" West 158.44 feet; thence North 01°31'27" East 73.76 feet; thence North

13°29'00" East 58.77 feet; thence North 76°40'20" West 32.52 feet; thence North 13°19'40" East 16.65 feet to the Southerly Right-of-Way Line of Cys Road; thence South 76°31'00" East 47.56 feet along the Southerly Right-of-Way of said Cys Road; thence South 13°29'00" West 71.76 feet; thence South 01°31'27" West 72.19 feet; thence South 00°01'22" East 24.28 feet; thence North 89°59'24" East 14.08 feet; thence South 00°00'36" East 15.00 feet; thence South 89°59'24" West 14.08 feet; thence South 00°00'36" East 9.36 feet; thence South 89°59'24" East 214.93 feet; thence South 89°02'06" East 10.21 feet; thence North 00°00'27" West 18.79 feet; thence North 89°59'33" East 15.00 feet; thence South 00°00'27" East 19.05 feet; thence South 89°02'06" East 89.20 feet; thence North 00°57'54" East 17.19 feet; thence North 89°59'24" East 7.74 feet; thence North 00°00'36" West 6.35 feet; thence North 89°59'24" East 15.00 feet; thence South 00°00'36" East 23.93 feet; thence South 89°02'06" East 101.60 feet; thence North 74°47'38" East 110.78 feet; thence North 48°22'28" East 8.86 feet; thence North 03°38'21" East 6.52 feet; thence North 48°37'31" East 110.54 feet; thence North 57°32'03" West 43.25 feet; thence North 32°27'57" East 15.00 feet; thence South 57°32'03" East 47.59 feet; thence North 48°37'31" East 17.08 feet; thence North 28°16'25" East 30.11 feet; thence North 12°48'49" East 111.08 feet; thence North 77°11'11" West 22.96 feet; thence North 12°48'49" East 15.00 feet; thence South 77°11'11" East 22.96 feet; thence North 12°48'49" East 57.88 feet; thence North 77°11'11" West 33.95 feet; thence North 12°48'49" East 15.00 feet; thence South 77°11'11" East 33.95 feet; thence North 12°48'49" East 10.30 feet; thence North 76°31'00" West 360.89 feet; thence South 89°59'24" West 39.20 feet; thence South 00°00'36" East 34.00 feet; thence South 89°59'24" West 15.00 feet; thence North 00°00'36" West 34.00 feet; thence South 89°59'24" West 19.50 feet;

thence South 00°00'36" East 34.00 feet; thence South 89°59'24" West 15.00 feet; thence North 00°00'36" West 34.00 feet; thence South 89°59'24" West 81.53 feet; thence North 00°00'36" West 15.00 feet; thence North 89°59'24" East 172.00 feet; thence South 76°31'00" East 119.79 feet; thence North 13°29'00" East 8.50 feet; thence South 76°31'00" East 15.00 feet; thence South 13°29'00" West 8.50 feet; thence South 76°31'00" East 193.57 feet; thence North 13°29'00" East 10.63 feet; thence South 77°11'11" East 34.00 feet; thence North 12°48'49" East 64.00 feet; thence North 37°57'56" West 50.61 feet; thence North 76°31'00" West 338.48 feet; thence South 13°37'06" West 35.26 feet; thence North 76°22'54" West 15.00 feet; thence North 13°37'06" East 35.22 feet; thence North 76°31'00" West 83.37 feet; thence South 89°59'24" West 85.21 feet; thence North 00°03'11" West 7.20 feet; thence North 01°31'27" East 7.80 feet; thence North 89°59'24" East 86.78 feet; thence South 76°31'00" East 120.58 feet; thence North 13°29'00" East 20.00 feet; thence South 76°31'00" East 15.00 feet; thence South 13°29'00" West 20.00 feet; thence South 76°31'00" East 22.61 feet; thence North 13°29'00" East 15.01 feet; thence South 76°31'00" East 15.00 feet; thence South 13°29'00" West 15.01 feet; thence South 76°31'00" East 55.22 feet; thence North 13°29'00" East 8.50 feet; thence South 76°31'00" East 15.00 feet; thence South 13°29'00" West 8.50 feet; thence South 76°31'00" East 200.47 feet; thence South 37°57'56" East 21.75 feet; thence North 52°02'04" East 13.23 feet; thence South 37°57'56" East 15.00 feet; thence South 52°02'04" West 13.23 feet; thence South 37°57'56" East 28.23 feet; thence South 12°48'49" West 40.00 feet; thence South 76°54'54" East 21.20 feet; thence South 13°05'06" West 15.00 feet; thence North 76°54'54" West 21.13 feet; thence South 12°48'49" West 253.43 feet; thence South 28°16'25" West 34.83 feet; thence South 48°37'31" West 44.37 feet; thence South 37°38'05" East 62.20 feet to the point of beginning.
Contains 51,899 Square Feet or 1.191 Acres

PROJECT # DATE
5425B 5/28/13

1 OF 1

FILE: c:\easements\ehretel3

COBBLEGATE APARTMENTS

910 EAST 900 SOUTH
SANDY, UTAH 84094

WATER LINE EASEMENT

FOR:
MILLER DEVELOPMENT
P.O. BOX 571218
SALT LAKE CITY, UTAH 84157
PHONE: 801-281-5175

45 W. 10000 S. Ste 500
Sandy, UT 84070
Phone: 801.255.0529
Fax: 801.255.4449
www.ensignutah.com



Cobblegate Apartments –Water Line Easement

Beginning at a point on the Northerly Right-of-Way Line of Quarry Bend Drive, said point being South 89°52'49" East 621.86 feet and North 334.09 feet the Southeast Corner of the Westerly Half of the Northwest Quarter of Section 5, Township 3 South, Range 1 East, Salt Lake Base & Meridian, said Southeast Corner of the Westerly Half of the Northwest Quarter point being South 89°52'49" East along the Section Line 1311.78 feet from the West Quarter Corner of said Section 5, said West Quarter Corner being South 08°24'25" East 75.02 Feet from a found brass cap monument located in the intersection of 9000 South Street and 700 East Street; and running

thence South 61°30'47" West 15.19 feet along the Northerly Right-of-Way Line of said Quarry Bend Drive;

thence North 37°38'05" West 39.29 feet;
thence South 50°05'45" West 6.69 feet;
thence North 39°54'15" West 15.00 feet;
thence North 50°05'45" East 7.28 feet;
thence North 37°38'05" West 4.50 feet;
thence South 48°37'31" West 80.31 feet;
thence South 03°38'21" West 6.48 feet;
thence South 48°22'28" West 18.55 feet;
thence South 74°47'38" West 116.43 feet;
thence North 89°02'06" West 109.03 feet;
thence South 00°00'36" East 33.99 feet;
thence South 89°59'24" West 15.00 feet;
thence North 00°00'36" West 34.25 feet;
thence North 89°02'06" West 20.41 feet;
thence South 00°57'54" West 35.04 feet;
thence North 89°02'06" West 15.00 feet;
thence North 00°57'54" East 35.04 feet;
thence North 89°02'06" West 198.62 feet;
thence North 00°57'54" East 23.50 feet;
thence South 89°02'06" East 15.00 feet;
thence South 00°57'54" West 8.50 feet;
thence South 89°02'06" East 55.57 feet;
thence North 00°57'54" East 10.98 feet;
thence North 89°59'24" East 31.12 feet;
thence North 00°00'36" West 414.57 feet;
thence South 89°59'24" West 34.00 feet;
thence North 00°00'36" West 15.00 feet;
thence North 89°59'24" East 34.00 feet;
thence North 00°00'36" West 158.44 feet;
thence North 01°31'27" East 73.76 feet;
thence North 13°29'00" East 56.77 feet;
thence North 76°40'20" West 32.52 feet;
thence North 13°19'40" East 16.65 feet to the Southerly Right-of-Way Line of Cys Road;
thence South 76°31'00" East 47.56 feet along the Southerly Right-of-Way of said Cys Road;
thence South 13°29'00" West 71.76 feet;
thence South 01°31'27" West 72.19 feet;
thence South 00°01'22" East 24.28 feet;

thence North 89°59'24" East 14.08 feet;
thence South 00°00'36" East 15.00 feet;
thence South 89°59'24" West 14.08 feet;
thence South 00°00'36" East 330.15 feet;
thence East 9.36 feet;
thence South 15.00 feet;
thence West 9.36 feet;
thence South 00°00'36" East 214.93 feet;
thence South 89°02'06" East 10.21 feet;
thence North 00°00'27" West 18.79 feet;
thence North 89°59'33" East 15.00 feet;
thence South 00°00'27" East 19.05 feet;
thence South 89°02'06" East 89.20 feet;
thence North 00°57'54" East 17.19 feet;
thence North 89°59'24" East 7.74 feet;
thence North 00°00'36" West 6.35 feet;
thence North 89°59'24" East 15.00 feet;
thence South 00°00'36" East 23.93 feet;
thence South 89°02'06" East 101.60 feet;
thence North 74°47'38" East 110.78 feet;
thence North 48°22'28" East 8.86 feet;
thence North 03°38'21" East 6.52 feet;
thence North 48°37'31" East 110.54 feet;
thence North 57°32'03" West 43.25 feet;
thence North 32°27'57" East 15.00 feet;
thence South 57°32'03" East 47.59 feet;
thence North 48°37'31" East 17.08 feet;
thence North 28°16'25" East 30.11 feet;
thence North 12°48'49" East 111.08 feet;
thence North 77°11'11" West 22.96 feet;
thence North 12°48'49" East 15.00 feet;
thence South 77°11'11" East 22.96 feet;
thence North 12°48'49" East 57.86 feet;
thence North 77°11'11" West 33.95 feet;
thence North 12°48'49" East 15.00 feet;
thence South 77°11'11" East 33.95 feet;
thence North 12°48'49" East 10.30 feet;
thence North 76°31'00" West 360.89 feet;
thence South 89°59'24" West 39.20 feet;
thence South 00°00'36" East 34.00 feet;
thence South 89°59'24" West 15.00 feet;
thence North 00°00'36" West 34.00 feet;
thence South 89°59'24" West 19.50 feet;
thence South 00°00'36" East 34.00 feet;
thence South 89°59'24" West 15.00 feet;
thence North 00°00'36" West 34.00 feet;
thence South 89°59'24" West 81.53 feet;
thence North 00°00'36" West 15.00 feet;

thence North 89°59'24" East 172.00 feet;
thence South 76°31'00" East 119.79 feet;
thence North 13°29'00" East 8.50 feet;
thence South 76°31'00" East 15.00 feet;
thence South 13°29'00" West 8.50 feet;
thence South 76°31'00" East 193.57 feet;
thence North 13°29'00" East 10.63 feet;
thence South 77°11'11" East 34.00 feet;
thence North 12°48'49" East 64.00 feet;
thence North 37°57'56" West 50.61 feet;
thence North 76°31'00" West 338.48 feet;
thence South 13°37'06" West 35.26 feet;
thence North 76°22'54" West 15.00 feet;
thence North 13°37'06" East 35.22 feet;
thence North 76°31'00" West 83.37 feet;
thence South 89°59'24" West 85.21 feet;
thence North 00°03'11" West 7.20 feet;
thence North 01°31'27" East 7.80 feet;
thence North 89°59'24" East 86.78 feet;
thence South 76°31'00" East 120.58 feet;
thence North 13°29'00" East 20.00 feet;
thence South 76°31'00" East 15.00 feet;
thence South 13°29'00" West 20.00 feet;
thence South 76°31'00" East 22.61 feet;
thence North 13°29'00" East 15.01 feet;
thence South 76°31'00" East 15.00 feet;
thence South 13°29'00" West 15.01 feet;
thence South 76°31'00" East 55.22 feet;
thence North 13°29'00" East 8.50 feet;
thence South 76°31'00" East 15.00 feet;
thence South 13°29'00" West 8.50 feet;
thence South 76°31'00" East 200.47 feet;
thence South 37°57'56" East 21.75 feet;
thence North 52°02'04" East 13.23 feet;
thence South 37°57'56" East 15.00 feet;
thence South 52°02'04" West 13.23 feet;
thence South 37°57'56" East 26.23 feet;
thence South 12°48'49" West 40.00 feet;
thence South 76°54'54" East 21.20 feet;
thence South 13°05'06" West 15.00 feet;
thence North 76°54'54" West 21.13 feet;
thence South 12°48'49" West 253.43 feet;
thence South 28°16'25" West 34.83 feet;
thence South 48°37'31" West 44.37 feet;
thence South 37°38'05" East 62.20 feet to the point of beginning.

Contains 51,899 Square Feet or 1.191 Acres