

EXHIBIT A

Legal Boundary Descriptions and Lot Drawings

TAX ID: 02-017-0-0041:**TITLE REPORT DESCRIPTION:**

BEG AT SE COR OF SEC 30, T3S, R4W, SLB&M, TH W ON S SEC LI 675 FT M/L TO E LI OF SPLA & SLRR R/W, TH ALG SD R/W LI N 12°07'56" E TO TH SW COR OF LOT 307 OF TOOELE CITY COMMERCIAL PARK PHASE III AS REC'D IN THE OFFICE OF THE TOOELE COUNTY RECORDER, TH ALG THE S LI OF SD SUBDIVISION S 77°52'05" E 244.33 FT; TH S 12°07'55" W 160.00 FT; TH S 77°52'05" E 235.59 FT M/L TO THE E LI OF SEC 30, TH S ALG SD E LI OF SD SEC 798.86 FT M/L TO THE POB.

LESS AND EXCEPTING A RIGHT OF WAY TO WESTERN PACIFIC RAILROAD.

ALSO LESS AND EXCEPTING THAT PORTION LYING WITHIN TOOELE CITY COMMERCIAL PARK PHASE 4.

ALSO LESS AND EXCEPTING THAT PORTION LYING WITHIN A COUNTY ROAD LYING WITHIN THE SOUTHERLY PORTION OF SUBJECT PROPERTY.

LESS .88 AC TO TOOELE CITY COMMERCIAL PARK PH 4 (300524). BALANCE OF 2-17-40 AFTER 16-76 FOR 2009 YEAR.

AS SURVEYED DESCRIPTION:

A PARCEL OF LAND BEING LOCATED IN THE SOUTHEAST QUARTER OF SECTION 30, TOWNSHIP 3 SOUTH, RANGE 4 WEST, SALT LAKE BASE AND MERIDIAN; BEING DESCRIBED BY SURVEY AS FOLLOWS:

COMMENCING AT THE SOUTHEAST CORNER OF SECTION 30, TOWNSHIP 3 SOUTH, RANGE 4 WEST, SALT LAKE BASE AND MERIDIAN; THENCE NORTH 00°05'41" WEST ALONG THE EAST LINE OF THE SOUTHEAST QUARTER OF SAID SECTION 30, A DISTANCE OF 29.95 FEET TO THE POINT OF BEGINNING; THENCE SOUTH 89°43'19" WEST, A DISTANCE OF 117.24 FEET TO THE EAST LINE OF 1200 WEST STREET AND TOOELE CITY COMMERCIAL PARK PHASE 4 (ENTRY NO. 300524); THENCE NORTH 15°38'12" EAST ALONG SAID EAST LINE, A DISTANCE OF 432.41 FEET TO THE EAST LINE OF THE SOUTHEAST QUARTER OF SAID SECTION 30; THENCE SOUTH 00°05'41" EAST ALONG SAID EAST SECTION LINE, A DISTANCE OF 415.84 FEET TO THE POINT OF BEGINNING.

CONTAINS: 24,376 SQUARE FEET OR 0.600 ACRES +/-

NEW DESCRIPTION:

A PARCEL OF LAND BEING LOCATED IN THE SOUTHWEST QUARTER OF SECTION 29, TOWNSHIP 3 SOUTH, RANGE 4 WEST, SALT LAKE BASE AND MERIDIAN; BEING DESCRIBED AS FOLLOWS:

BEGINNING AT THE SOUTHWEST CORNER OF LOT 305 OF THE TOOELE CITY COMMERCIAL PARK PHASE 3 AMENDED (ENTRY NO. 212598), SAID POINT BEING NORTH 00°05'41" WEST ALONG THE WEST LINE OF THE SOUTHWEST QUARTER OF SAID SECTION 29, A DISTANCE OF 813.16 FEET AND NORTH 89°54'19" EAST, A DISTANCE OF 101.11 FEET TO THE POINT OF BEGINNING; THENCE ALONG SAID TOOELE CITY COMMERCIAL PARK PHASE 3 AMENDED THE FOLLOWING THREE (3) COURSES; 1) THENCE SOUTH 77°52'10" EAST, A DISTANCE OF 241.23 FEET; 2) THENCE NORTH 12°07'53" EAST, A DISTANCE OF 80.02 FEET TO A POINT OF CURVATURE; 3) THENCE 246.07 FEET ALONG A 150.00 FOOT RADIUS CURVE TO THE RIGHT (CHORD BEARS NORTH 59°07'34" EAST, 219.39 FEET); THENCE SOUTH 73°52'43" EAST, A DISTANCE OF 103.98 FEET; THENCE SOUTH 16°07'20" WEST, A DISTANCE OF 253.78 FEET; THENCE NORTH 79°18'33" WEST, A DISTANCE OF 488.24 FEET TO THE EAST RIGHT-OF-WAY LINE OF 1200 WEST STREET; THENCE ALONG SAID EAST RIGHT-OF-WAY LINE THE FOLLOWING TWO (2) COURSES; 1) THENCE NORTH 15°38'12" EAST, A DISTANCE OF 5.77 FEET; 2) NORTH 12°07'50" EAST, A DISTANCE OF 37.26 FEET TO THE POINT OF BEGINNING.

CONTAINS: 71,816 SQUARE FEET OR 1.649 ACRES +/-

TAX ID: 02-009-0-0092:**TITLE REPORT DESCRIPTION:**

BEG AT THE SW COR OF SEC 29, T3S, R4W, SLB&M; AND RUN TH N 89°39'39" E 1918.543 FT TO THE SW COR OF WESTLAND COVE PH 5 TH N 00°45'10" E 396.09 FT; TH N 00°45'10" E 393.05 FT; TH N 00°18'51" E 401.61 FT; TH N 01°18'32" E 88.04 FT; TH S 69°55'40" E 83.24 FT; TH E 104.87 FT; TH N 05°28'39" E 74.369 FT M/L TO THE N LI OF THE S 1/2 OF THE SW QTR, THE WLY ALG SD S LI 1407.62 FT M/L TO A PT ON THE ELY BDY OF THE TOOELE CITY REDEVELOPMENT AGENCY PPTY; TH S 16°07'22" W 407.25 FT, TH N 73°52'38"W 64.45 FT TH ALG A 150 FT RADIUS CURVE THE LEFT 246.068 FT WITH A C/A OF 93°59'27", TH S 12°07'58" W 80.02 FT, TH N 77°52'05" W 180.479 FT, TH S 14°40' W 634.10 FT TO THE W SEC LI; TH S ALG SEC LI 187.80 FT TO POB. (BALANCE OF 2-9-32 AFTER PT TO TOOELE CITY COMMERCIAL PARK PHASE III FOR 2004 YEAR.) 50.57 AC 05/08/2003 05/08/2003----LESS 0.704 AC TO 2-9-76. BALANCE OF 2-9-66 AFTER 2-9-76 FOR 2010 YEAR. 49.866 AC---LESS 26.37 AC TO 2-9-80 AS PER WD ENTRY #337099. BALANCE OF 2-9-78 AFTER 2-9-80 FOR 2011 YEAR. 23.50 AC---LESS 3.939 AC TO TOOELE BLVD. (ENTRY # 401144). BALANCE OF 2-9-81 AFTER 2-9-R FOR 2015 YEAR. 19.561 AC

AS SURVEYED DESCRIPTION:

A PARCEL OF LAND BEING LOCATED IN THE SOUTHWEST QUARTER OF SECTION 29, TOWNSHIP 3 SOUTH, RANGE 4 WEST, SALT LAKE BASE AND MERIDIAN; BEING DESCRIBED BY SURVEY AS FOLLOWS:

BEGINNING AT THE SOUTHWEST CORNER OF SECTION 29, TOWNSHIP 3 SOUTH, RANGE 4 WEST, SALT LAKE BASE AND MERIDIAN, SAID POINT ALSO BEING THE POINT OF BEGINNING; THENCE NORTH 00°05'41" WEST ALONG THE WEST LINE OF SOUTHWEST QUARTER OF SAID SECTION 29, A DISTANCE OF 188.74 FEET; THENCE NORTH 14°34'19" EAST, A DISTANCE OF 632.25 FEET TO THE SOUTH LINE OF LOT 305 OF TOOELE CITY COMMERCIAL PARK PHASE 3 AMENDED (ENTRY NO. 212598); THENCE ALONG SAID TOOELE CITY COMMERCIAL PARK PHASE 3 AMENDED THE FOLLOWING TWO (2) COURSES; 1) THENCE SOUTH 77°52'10" EAST, A DISTANCE OF 108.89 FEET; 2) THENCE NORTH 12°07'53" EAST, A DISTANCE OF 80.02 FEET TO A POINT OF CURVATURE; THENCE 246.07 FEET ALONG A 150.00 FOOT RADIUS CURVE TO THE RIGHT (CHORD BEARS, N59°07'34"E, 219.39 FEET) TO THE SOUTH LINE OF INNOVATIVE SUBDIVISION (ENTRY NO. 396498); THENCE ALONG SAID SUBDIVISION THE FOLLOWING TWO (2) CALLS: 1) THENCE SOUTH 73°52'43" EAST, A DISTANCE OF 64.45 FEET; 2) THENCE NORTH 16°07'17" EAST, A DISTANCE OF 407.86 FEET TO THE NORTH LINE OF THE SOUTHWEST QUARTER

OF THE SOUTHWEST QUARTER OF SAID SECTION 29; THENCE NORTH 89°39'58" EAST ALONG SAID NORTH LINE, A DISTANCE OF 424.78 FEET TO THE WEST LINE OF TOOELE BOULEVARD AND A POINT OF CURVATURE; THENCE 190.65 FEET ALONG SAID WEST LINE AND A 1084.00 FOOT RADIUS CURVE TO THE LEFT (CHORD BEARS SOUTH 21°09'38" WEST, 190.40 FEET); THENCE SOUTH 16°07'20" WEST, A DISTANCE OF 1194.90 FEET TO THE SOUTH LINE OF THE SOUTHWEST QUARTER OF SAID SECTION 29; THENCE SOUTH 89°39'41" WEST ALONG SAID SOUTH LINE, A DISTANCE OF 740.14 FEET TO THE POINT OF BEGINNING.

CONTAINS: 878,174 SQUARE FEET OR 20.160 ACRES +/-

NEW DESCRIPTION:

A PARCEL OF LAND BEING LOCATED IN THE SOUTHWEST QUARTER OF SECTION 29, AND THE SOUTHEAST QUARTER OF SECTION 30, TOWNSHIP 3 SOUTH, RANGE 4 WEST, SALT LAKE BASE AND MERIDIAN; BEING DESCRIBED AS FOLLOWS:

BEGINNING AT THE SOUTHWEST CORNER OF SECTION 29, TOWNSHIP 3 SOUTH, RANGE 4 WEST, SALT LAKE BASE AND MERIDIAN, SAID POINT ALSO BEING THE POINT OF BEGINNING; THENCE NORTH 00°05'41" WEST ALONG THE WEST LINE OF SOUTHWEST QUARTER OF SAID SECTION 29, A DISTANCE OF 29.95 FEET; THENCE SOUTH 89°43'19" WEST, A DISTANCE OF 117.24 FEET TO THE EAST LINE OF 1200 WEST STREET AND TOOELE CITY COMMERCIAL PARK PHASE 4 (ENTRY NO. 300524); THENCE NORTH 15°38'12" EAST ALONG SAID EAST LINE, A DISTANCE OF 770.48 FEET; THENCE SOUTH 79°18'33" EAST, A DISTANCE OF 488.24 FEET; THENCE NORTH 16°07'20" EAST, A DISTANCE OF 253.78 FEET; THENCE NORTH 73°52'43" WEST, A DISTANCE OF 39.53 FEET TO THE EAST LINE OF INNOVATIVE SUBDIVISION (ENTRY NO. 396498); THENCE NORTH 16°07'17" EAST ALONG SAID EAST LINE, A DISTANCE OF 84.41 FEET TO THE SOUTHEAST CORNER OF LOT 1 OF SAID SUBDIVISION; THENCE SOUTH 73°52'40" EAST, A DISTANCE OF 390.65 FEET TO THE WEST LINE OF TOOELE BOULEVARD (ENTRY NO. 401144); THENCE SOUTH 16°07'20" WEST ALONG SAID WEST LINE, A DISTANCE OF 940.79 FEET TO THE SOUTH LINE OF THE SOUTHWEST QUARTER OF SAID SECTION 29; THENCE SOUTH 89°39'41" WEST ALONG SAID SOUTH LINE, A DISTANCE OF 740.14 FEET TO THE SOUTHWEST CORNER OF SAID SECTION 29 AND THE POINT OF BEGINNING.

CONTAINS: 712,487 SQUARE FEET OR 16.356 ACRES +/-

TAX ID: 02-009-0-0093:**TITLE REPORT DESCRIPTION:**

THAT PORTION OF THE NORTH HALF OF THE SOUTHWEST QUARTER OF SECTION 29, TOWNSHIP 3 SOUTH, RANGE 4 WEST, SALT LAKE BASE AND MERIDIAN LYING NORTHWESTERLY OF TOOEELE BOULEVARD AND WESTERLY OF TOOEELE CITY COMMERCIAL PARK PHASE 6 AND SOUTHWESTERLY OF TOOEELE CITY COMMERCIAL PARK PHASE 1 AND SOUTHEASTERLY OF TOOEELE CITY COMMERCIAL PARK PHASE 3.

LESS AND EXCEPTING THEREFROM THAT PARCEL CONVEYED TO THE REDEVELOPMENT AGENCY OF TOOEELE CITY BY THAT CERTAIN QUIT CLAIM DEED RECORDED APRIL 28, 1998 AS ENTRY NO. 110686 IN BOOK 503 AT PAGE 462 OF OFFICIAL RECORDS AND MORE PARTICULARLY DESCRIBED AS FOLLOWS:

BEGINNING AT THE NORTHWEST CORNER OF LOT 7 OF THE TOOEELE CITY COMMERCIAL PARK PHASE 1; AND RUNNING THENCE NORTH 53°10'42" EAST ALONG THE NORTH LINE OF SAID LOT 7, 329.93 FEET TO THE NORTHEAST CORNER OF SAID LOT 7, AND AT A POINT ON A CURVE TO THE LEFT THE RADIUS POINT OF WHICH IS NORTH 61°00'11" EAST 530.00 FEET AND SAID POINT ALSO BEING ON THE WEST LINE OF MILLBURN DRIVE; THENCE SOUTHEASTERLY ALONG THE ARC OF SAID CURVE AND WEST LINE AND THROUGH A DELTA ANGLE OF 07°49'29" 72.38 FEET TO A POINT OF TANGENCY; THENCE SOUTH 36°49'18" EAST ALONG SAID WEST LINE AND THE WEST LINE OF A PROPOSED EXTENSION OF MILLBURN DRIVE 537.08 FEET TO A POINT OF A 40.00 FOOT RADIUS CURVE TO THE RIGHT; THENCE SOUTHERLY ALONG THE ARC OF SAID CURVE AND THROUGH A DELTA ANGLE OF 91°33'52" 63.92 FEET TO A POINT OF A REVERSE CURVE TO THE LEFT AND ON THE NORTH LINE OF A PROPOSED STREET, THE RADIUS POINT OF SAID CURVE BEING SOUTH 35°15'26" EAST 1084.00 FEET; THENCE SOUTHWESTERLY ALONG THE ARC OF SAID CURVE AND PROPOSED NORTH LINE AND THROUGH A DELTA ANGLE OF 15°07'58" 286.30 FEET; THENCE NORTH 36°49'18" WEST AND ALONG THE WEST LINE OF SAID LOT 7, 679.15 FEET TO THE POINT OF BEGINNING.

AS SURVEYED DESCRIPTION:

A PARCEL OF LAND BEING LOCATED IN THE SOUTHWEST CORNER OF SECTION 29, TOWNSHIP 3 SOUTH, RANGE 4 WEST, SALT LAKE BASE AND MERIDIAN; BEING DESCRIBED BY SURVEY AS FOLLOWS:

COMMENCING AT THE SOUTHWEST CORNER OF SECTION 29, TOWNSHIP 3 SOUTH, RANGE 4 WEST, SALT LAKE BASE AND MERIDIAN; THENCE NORTH 00°05'41" WEST ALONG THE WEST LINE OF SOUTHWEST QUARTER OF SAID SECTION 29, A DISTANCE OF 1,323.18 FEET TO THE NORTH LINE OF THE SOUTHWEST QUARTER OF THE SOUTHWEST QUARTER OF SAID SECTION 29; THENCE NORTH 89°39'58" EAST ALONG SAID NORTH LINE, A DISTANCE OF 718.10 FEET TO THE EAST LINE OF LOT 304 OF THE TOOEELE CITY COMMERCIAL PARK PHASE 3 AMENDED (ENTRY NO. 212598) SAID POINT BEING THE POINT OF BEGINNING; THENCE NORTH 16°07'17" EAST ALONG SAID EAST LINE OF TOOEELE CITY COMMERCIAL PARK PHASE 3, A DISTANCE OF 725.03 FEET TO THE SOUTH LINE OF TOOEELE CITY COMMERCIAL PARK PHASE 1 (ENTRY NO. 029425); THENCE SOUTH 36°49'26" EAST ALONG SAID SOUTH LINE, A DISTANCE OF 601.87 FEET TO THE WEST LINE OF TOOEELE BOULEVARD AND A POINT OF CURVATURE; THENCE 253.37 FEET ALONG SAID WEST LINE AND A 1084.00 FOOT RADIUS CURVE TO THE LEFT (CHORD BEARS SOUTH 32°53'42" WEST, 252.79 FEET) TO THE NORTH LINE OF THE SOUTHWEST QUARTER OF THE SOUTHWEST QUARTER OF SAID SECTION 29; THENCE SOUTH 89°39'58" WEST ALONG SAID NORTH LINE, A DISTANCE OF 424.78 FEET TO THE POINT OF BEGINNING.

CONTAINS: 217,792 SQUARE FEET OF 5.000 ACRES +/-

NEW DESCRIPTION:

A PARCEL OF LAND BEING LOCATED IN THE SOUTHWEST QUARTER OF SECTION 29, TOWNSHIP 3 SOUTH, RANGE 4 WEST, SALT LAKE BASE AND MERIDIAN; BEING DESCRIBED AS FOLLOWS:

COMMENCING AT THE SOUTHWEST CORNER OF SECTION 29, TOWNSHIP 3 SOUTH, RANGE 4 WEST, SALT LAKE BASE AND MERIDIAN; THENCE NORTH 00°05'41" WEST ALONG THE WEST LINE OF SOUTHWEST QUARTER OF SAID SECTION 29, A DISTANCE OF 1,176.20 FEET; THENCE NORTH 89°54'19" EAST, A DISTANCE OF 674.47 FEET TO THE EAST LINE OF TOOEELE CITY COMMERCIAL PARK PHASE 3 AMENDED (ENTRY NO. 212598) SAID POINT BEING THE POINT OF BEGINNING; THENCE NORTH 16°07'17" EAST ALONG SAID EAST LINE OF TOOEELE CITY COMMERCIAL PARK PHASE 3, A DISTANCE OF 881.23 FEET TO THE SOUTH LINE OF TOOEELE CITY COMMERCIAL PARK PHASE 1 (ENTRY NO. 029425);

THENCE SOUTH 36°49'26" EAST ALONG SAID SOUTH LINE, A DISTANCE OF 601.87 FEET TO THE WEST LINE OF TOOELE BOULEVARD AND A POINT OF A NON-TANGENT CURVATURE; THENCE ALONG TOOELE BOULEVARD THE FOLLOWING TWO (2) COURSES; 1) THENCE 444.01 FEET ALONG SAID WEST LINE AND A 1,084.00 FOOT RADIUS CURVE TO THE LEFT (CHORD BEARS SOUTH 27°51'23" WEST, 440.91 FEET); 2) THENCE SOUTH 16°07'20" WEST, A DISTANCE OF 86.86 FEET; THENCE NORTH 73°52'40" WEST, A DISTANCE OF 390.65 FEET TO THE POINT OF BEGINNING.

CONTAINS: 302,363 SQUARE FEET OR 6.941 ACRES +/-

TAX ID: 02-009-0-0069:**TITLE REPORT DESCRIPTION:**

BEGINNING 178.8 FEET NORTH OF THE SOUTHWEST CORNER OF SECTION 29, TOWNSHIP 3 SOUTH, RANGE 4 WEST, SALT LAKE BASE AND MERIDIAN; THENCE NORTH 1132.20 FEET; THENCE EAST 318 FEET ALONG THE CENTERLINE OF THE SOUTHWEST 1/4 OF SECTION 29; THENCE SOUTH 14°40' WEST 1110 FEET TO THE POINT OF BEGINNING. LESS AND EXCEPTING TOOELE CITY COMMERCIAL PARK PHASE III AMENDED, AND TOOELE CITY COMMERCIAL PARK PHASE 4.

AS SURVEYED DESCRIPTION:

A PARCEL OF LAND BEING LOCATED IN THE SOUTHWEST QUARTER OF SECTION 29, TOWNSHIP 3 SOUTH, RANGE 4 WEST, SALT LAKE BASE AND MERIDIAN; BEING DESCRIBED BY SURVEY AS FOLLOWS:

COMMENCING AT THE SOUTHWEST CORNER OF SECTION 29, TOWNSHIP 3 SOUTH, RANGE 4 WEST, SALT LAKE BASE AND MERIDIAN; THENCE NORTH 00°05'41" WEST ALONG THE WEST LINE OF SOUTHWEST QUARTER OF SAID SECTION 29, A DISTANCE OF 188.74 FEET TO THE POINT OF BEGINNING; THENCE CONTINUING ALONG SAID WEST LINE NORTH 00°05'41" WEST, A DISTANCE OF 257.05 FEET TO THE EAST LINE OF 1200 WEST STREET AND TOOELE CITY COMMERCIAL PARK PHASE 4 (ENTRY NO. 300524); THENCE NORTH 15°38'12" EAST ALONG SAID EAST LINE, A DISTANCE OF 343.84 FEET; THENCE NORTH 12°07'50" EAST, A DISTANCE OF 37.26 FEET TO THE SOUTH LINE OF LOT 305 OF TOOELE CITY COMMERCIAL PARK PHASE 3 AMENDED (ENTRY NO. 212598); THENCE SOUTH 77°52'10" EAST ALONG SAID SOUTH LINE, A DISTANCE OF 60.34 FEET; THENCE SOUTH 14°34'19" WEST, A DISTANCE OF 632.25 FEET TO THE WEST LINE OF SOUTHWEST QUARTER OF SAID SECTION 29 AND THE POINT BEGINNING.

CONTAINS: 31,660 SQUARE FEET OR 0.727 ACRES +/-

NEW DESCRIPTION:

A PARCEL OF LAND BEING LOCATED IN THE SOUTHWEST QUARTER OF SECTION 29, TOWNSHIP 3 SOUTH, RANGE 4 WEST, SALT LAKE BASE AND MERIDIAN; BEING DESCRIBED AS FOLLOWS:

COMMENCING AT THE SOUTHWEST CORNER OF SECTION 29, TOWNSHIP 3 SOUTH, RANGE 4 WEST, SALT LAKE BASE AND MERIDIAN; THENCE NORTH 00°05'41" WEST ALONG THE WEST LINE OF SOUTHWEST QUARTER OF SAID SECTION 29, A DISTANCE OF 1,176.20 FEET; THENCE NORTH 89°54'19" EAST, A DISTANCE OF 674.47 FEET TO THE POINT OF BEGINNING, SAID POINT BEING ON THE EAST LINE OF INNOVATIVE SUBDIVISION (ENTRY NO. 396498); THENCE SOUTH 73°52'40" EAST, A DISTANCE OF 390.65 FEET TO THE WEST LINE OF TOOELE BOULEVARD (ENTRY NO. 401144); THENCE SOUTH 16°07'20" WEST ALONG SAID WEST LINE, A DISTANCE OF 167.25 FEET; THENCE NORTH 73°52'40" WEST, A DISTANCE OF 390.65 FEET TO THE EAST LINE OF INNOVATIVE SUBDIVISION (ENTRY NO. 396498); THENCE NORTH 16°07'20" EAST ALONG SAID EAST LINE, A DISTANCE OF 167.25 FEET TO THE POINT OF BEGINNING.

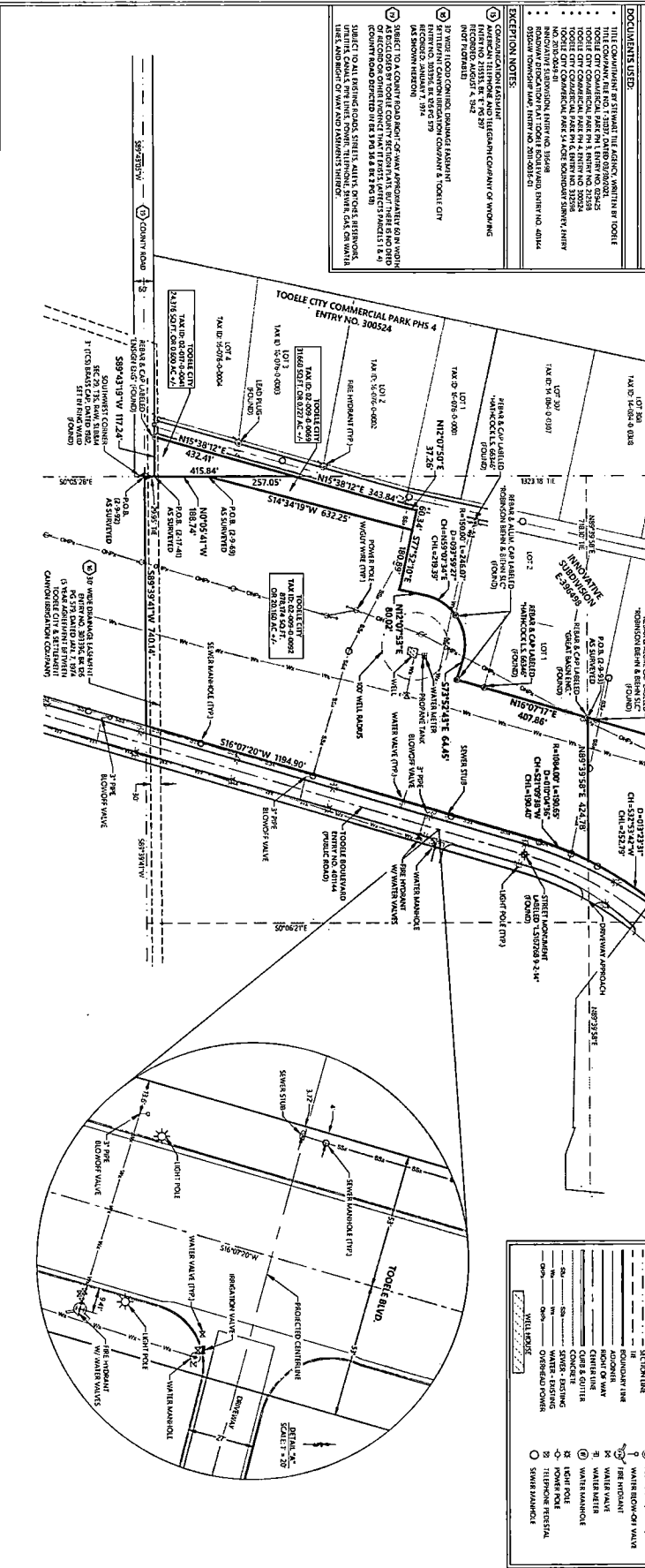
CONTAINS: 65,337 SQUARE FEET OR 1.500 ACRES +/-



TOOLE R.D.A. - RECORD OF SURVEY
CURRENT PARCELS
LOCATED IN THE SW 1/4 OF SECTION 28, SE 1/4 SECTION 30,
TOWNSHIP 3 SOUTH, RANGE 4 WEST, SALT LAKE BASE AND MERIDIAN
TOOLEE CITY, TOOLEE COUNTY, UTAH

SURVEYOR'S NARRATIVE & NOTES:
THIS SURVEY WAS COMMISSIONED BY TOOLEE CITY TO QUANTIFY THE BOUNDARIES OF THE LEGAL INTERESTS IN THE TOOLEE CITY COMMERCIAL PARK PHASE 1, 2, 3, 4, 5, 6, 7, 8, 9, 10, 11, 12, 13, 14, 15, 16, 17, 18, 19, 20, 21, 22, 23, 24, 25, 26, 27, 28, 29, 30, 31, 32, 33, 34, 35, 36, 37, 38, 39, 40, 41, 42, 43, 44, 45, 46, 47, 48, 49, 50, 51, 52, 53, 54, 55, 56, 57, 58, 59, 60, 61, 62, 63, 64, 65, 66, 67, 68, 69, 70, 71, 72, 73, 74, 75, 76, 77, 78, 79, 80, 81, 82, 83, 84, 85, 86, 87, 88, 89, 90, 91, 92, 93, 94, 95, 96, 97, 98, 99, 100.

DOCUMENTS USED:
• TITLE COMPANY FILE NO. 1-3973 DATE OF RECORDATION: 08/20/2010
• TOOLEE CITY COMMERCIAL PARK PHASE 1 ENTRY NO. 02823
• TOOLEE CITY COMMERCIAL PARK PHASE 2 ENTRY NO. 02824
• TOOLEE CITY COMMERCIAL PARK PHASE 3 ENTRY NO. 02825
• TOOLEE CITY COMMERCIAL PARK PHASE 4 ENTRY NO. 02826
• TOOLEE CITY COMMERCIAL PARK PHASE 5 ENTRY NO. 02827
• TOOLEE CITY COMMERCIAL PARK PHASE 6 ENTRY NO. 02828
• TOOLEE CITY COMMERCIAL PARK PHASE 7 ENTRY NO. 02829
• TOOLEE CITY COMMERCIAL PARK PHASE 8 ENTRY NO. 02830
• TOOLEE CITY COMMERCIAL PARK PHASE 9 ENTRY NO. 02831
• TOOLEE CITY COMMERCIAL PARK PHASE 10 ENTRY NO. 02832
• TOOLEE CITY COMMERCIAL PARK PHASE 11 ENTRY NO. 02833
• TOOLEE CITY COMMERCIAL PARK PHASE 12 ENTRY NO. 02834
• TOOLEE CITY COMMERCIAL PARK PHASE 13 ENTRY NO. 02835
• TOOLEE CITY COMMERCIAL PARK PHASE 14 ENTRY NO. 02836
• TOOLEE CITY COMMERCIAL PARK PHASE 15 ENTRY NO. 02837
• TOOLEE CITY COMMERCIAL PARK PHASE 16 ENTRY NO. 02838
• TOOLEE CITY COMMERCIAL PARK PHASE 17 ENTRY NO. 02839
• TOOLEE CITY COMMERCIAL PARK PHASE 18 ENTRY NO. 02840
• TOOLEE CITY COMMERCIAL PARK PHASE 19 ENTRY NO. 02841
• TOOLEE CITY COMMERCIAL PARK PHASE 20 ENTRY NO. 02842
• TOOLEE CITY COMMERCIAL PARK PHASE 21 ENTRY NO. 02843
• TOOLEE CITY COMMERCIAL PARK PHASE 22 ENTRY NO. 02844
• TOOLEE CITY COMMERCIAL PARK PHASE 23 ENTRY NO. 02845
• TOOLEE CITY COMMERCIAL PARK PHASE 24 ENTRY NO. 02846
• TOOLEE CITY COMMERCIAL PARK PHASE 25 ENTRY NO. 02847
• TOOLEE CITY COMMERCIAL PARK PHASE 26 ENTRY NO. 02848
• TOOLEE CITY COMMERCIAL PARK PHASE 27 ENTRY NO. 02849
• TOOLEE CITY COMMERCIAL PARK PHASE 28 ENTRY NO. 02850
• TOOLEE CITY COMMERCIAL PARK PHASE 29 ENTRY NO. 02851
• TOOLEE CITY COMMERCIAL PARK PHASE 30 ENTRY NO. 02852
• TOOLEE CITY COMMERCIAL PARK PHASE 31 ENTRY NO. 02853
• TOOLEE CITY COMMERCIAL PARK PHASE 32 ENTRY NO. 02854
• TOOLEE CITY COMMERCIAL PARK PHASE 33 ENTRY NO. 02855
• TOOLEE CITY COMMERCIAL PARK PHASE 34 ENTRY NO. 02856
• TOOLEE CITY COMMERCIAL PARK PHASE 35 ENTRY NO. 02857
• TOOLEE CITY COMMERCIAL PARK PHASE 36 ENTRY NO. 02858
• TOOLEE CITY COMMERCIAL PARK PHASE 37 ENTRY NO. 02859
• TOOLEE CITY COMMERCIAL PARK PHASE 38 ENTRY NO. 02860
• TOOLEE CITY COMMERCIAL PARK PHASE 39 ENTRY NO. 02861
• TOOLEE CITY COMMERCIAL PARK PHASE 40 ENTRY NO. 02862
• TOOLEE CITY COMMERCIAL PARK PHASE 41 ENTRY NO. 02863
• TOOLEE CITY COMMERCIAL PARK PHASE 42 ENTRY NO. 02864
• TOOLEE CITY COMMERCIAL PARK PHASE 43 ENTRY NO. 02865
• TOOLEE CITY COMMERCIAL PARK PHASE 44 ENTRY NO. 02866
• TOOLEE CITY COMMERCIAL PARK PHASE 45 ENTRY NO. 02867
• TOOLEE CITY COMMERCIAL PARK PHASE 46 ENTRY NO. 02868
• TOOLEE CITY COMMERCIAL PARK PHASE 47 ENTRY NO. 02869
• TOOLEE CITY COMMERCIAL PARK PHASE 48 ENTRY NO. 02870
• TOOLEE CITY COMMERCIAL PARK PHASE 49 ENTRY NO. 02871
• TOOLEE CITY COMMERCIAL PARK PHASE 50 ENTRY NO. 02872
• TOOLEE CITY COMMERCIAL PARK PHASE 51 ENTRY NO. 02873
• TOOLEE CITY COMMERCIAL PARK PHASE 52 ENTRY NO. 02874
• TOOLEE CITY COMMERCIAL PARK PHASE 53 ENTRY NO. 02875
• TOOLEE CITY COMMERCIAL PARK PHASE 54 ENTRY NO. 02876
• TOOLEE CITY COMMERCIAL PARK PHASE 55 ENTRY NO. 02877
• TOOLEE CITY COMMERCIAL PARK PHASE 56 ENTRY NO. 02878
• TOOLEE CITY COMMERCIAL PARK PHASE 57 ENTRY NO. 02879
• TOOLEE CITY COMMERCIAL PARK PHASE 58 ENTRY NO. 02880
• TOOLEE CITY COMMERCIAL PARK PHASE 59 ENTRY NO. 02881
• TOOLEE CITY COMMERCIAL PARK PHASE 60 ENTRY NO. 02882
• TOOLEE CITY COMMERCIAL PARK PHASE 61 ENTRY NO. 02883
• TOOLEE CITY COMMERCIAL PARK PHASE 62 ENTRY NO. 02884
• TOOLEE CITY COMMERCIAL PARK PHASE 63 ENTRY NO. 02885
• TOOLEE CITY COMMERCIAL PARK PHASE 64 ENTRY NO. 02886
• TOOLEE CITY COMMERCIAL PARK PHASE 65 ENTRY NO. 02887
• TOOLEE CITY COMMERCIAL PARK PHASE 66 ENTRY NO. 02888
• TOOLEE CITY COMMERCIAL PARK PHASE 67 ENTRY NO. 02889
• TOOLEE CITY COMMERCIAL PARK PHASE 68 ENTRY NO. 02890
• TOOLEE CITY COMMERCIAL PARK PHASE 69 ENTRY NO. 02891
• TOOLEE CITY COMMERCIAL PARK PHASE 70 ENTRY NO. 02892
• TOOLEE CITY COMMERCIAL PARK PHASE 71 ENTRY NO. 02893
• TOOLEE CITY COMMERCIAL PARK PHASE 72 ENTRY NO. 02894
• TOOLEE CITY COMMERCIAL PARK PHASE 73 ENTRY NO. 02895
• TOOLEE CITY COMMERCIAL PARK PHASE 74 ENTRY NO. 02896
• TOOLEE CITY COMMERCIAL PARK PHASE 75 ENTRY NO. 02897
• TOOLEE CITY COMMERCIAL PARK PHASE 76 ENTRY NO. 02898
• TOOLEE CITY COMMERCIAL PARK PHASE 77 ENTRY NO. 02899
• TOOLEE CITY COMMERCIAL PARK PHASE 78 ENTRY NO. 02900
• TOOLEE CITY COMMERCIAL PARK PHASE 79 ENTRY NO. 02901
• TOOLEE CITY COMMERCIAL PARK PHASE 80 ENTRY NO. 02902
• TOOLEE CITY COMMERCIAL PARK PHASE 81 ENTRY NO. 02903
• TOOLEE CITY COMMERCIAL PARK PHASE 82 ENTRY NO. 02904
• TOOLEE CITY COMMERCIAL PARK PHASE 83 ENTRY NO. 02905
• TOOLEE CITY COMMERCIAL PARK PHASE 84 ENTRY NO. 02906
• TOOLEE CITY COMMERCIAL PARK PHASE 85 ENTRY NO. 02907
• TOOLEE CITY COMMERCIAL PARK PHASE 86 ENTRY NO. 02908
• TOOLEE CITY COMMERCIAL PARK PHASE 87 ENTRY NO. 02909
• TOOLEE CITY COMMERCIAL PARK PHASE 88 ENTRY NO. 02910
• TOOLEE CITY COMMERCIAL PARK PHASE 89 ENTRY NO. 02911
• TOOLEE CITY COMMERCIAL PARK PHASE 90 ENTRY NO. 02912
• TOOLEE CITY COMMERCIAL PARK PHASE 91 ENTRY NO. 02913
• TOOLEE CITY COMMERCIAL PARK PHASE 92 ENTRY NO. 02914
• TOOLEE CITY COMMERCIAL PARK PHASE 93 ENTRY NO. 02915
• TOOLEE CITY COMMERCIAL PARK PHASE 94 ENTRY NO. 02916
• TOOLEE CITY COMMERCIAL PARK PHASE 95 ENTRY NO. 02917
• TOOLEE CITY COMMERCIAL PARK PHASE 96 ENTRY NO. 02918
• TOOLEE CITY COMMERCIAL PARK PHASE 97 ENTRY NO. 02919
• TOOLEE CITY COMMERCIAL PARK PHASE 98 ENTRY NO. 02920
• TOOLEE CITY COMMERCIAL PARK PHASE 99 ENTRY NO. 02921
• TOOLEE CITY COMMERCIAL PARK PHASE 100 ENTRY NO. 02922



SURVEYOR'S CERTIFICATE:
I, JOHN E. BRUNSON, A PROFESSIONAL LAND SURVEYOR AS AUTHORIZED BY THE BOARD OF PROFESSIONAL ENGINEERS AND SURVEYORS OF THE STATE OF UTAH, DO HEREBY CERTIFY THAT A SURVEY OF THE RECORDED PROPERTY WAS MADE AND CORRECTED TO ACCORD WITH THE REQUIREMENTS OF THE UTAH LAND RECORDS ACT AND COMPLY WITH THE REQUIREMENTS OF THE UTAH PROFESSIONAL LAND SURVEYING ACT AND AS THE BASIS OF REFERENCE FOR THIS SURVEY.

DATE: MAY 7, 2013
JOHN E. BRUNSON (Signature)
JOHN E. BRUNSON
Professional Land Surveyor, License No. 50540

LEGEND:

SECTION LINE	— — — — —
BOUNDARY LINE	— — — — —
UTILITY LINE	— — — — —
SEWER	— — — — —
WATER	— — — — —
ELECTRICITY	— — — — —
TELEPHONE	— — — — —
POWER	— — — — —
REBAR/FOUNDATION	○
WATER-BLOCKING WALL	▬
WATER VALVE	▽
SEWER VALVE	▽
WATER METER	□
WATER MANHOLE	○
WATER PUMP	○
LEAKY POLE	○
THUNDER STRIKES	○
SEWER MANHOLE	○

BASIS OF BEARINGS:
N 0° 59' 23.41" W, 266.35' ± (2011)
N 89° 32' 11.01" W, 407.86' ± (2011)

GRAPHIC SCALE:
1 inch = 200 feet
1 inch = 100 meters

REVISIONS:

NO.	DATE	DESCRIPTION

