

S.W. 1/4 OF THE N.W. 1/4
SECTION 24, T.5N., R.2W., S.L.B. & M.

IN ROY CITY

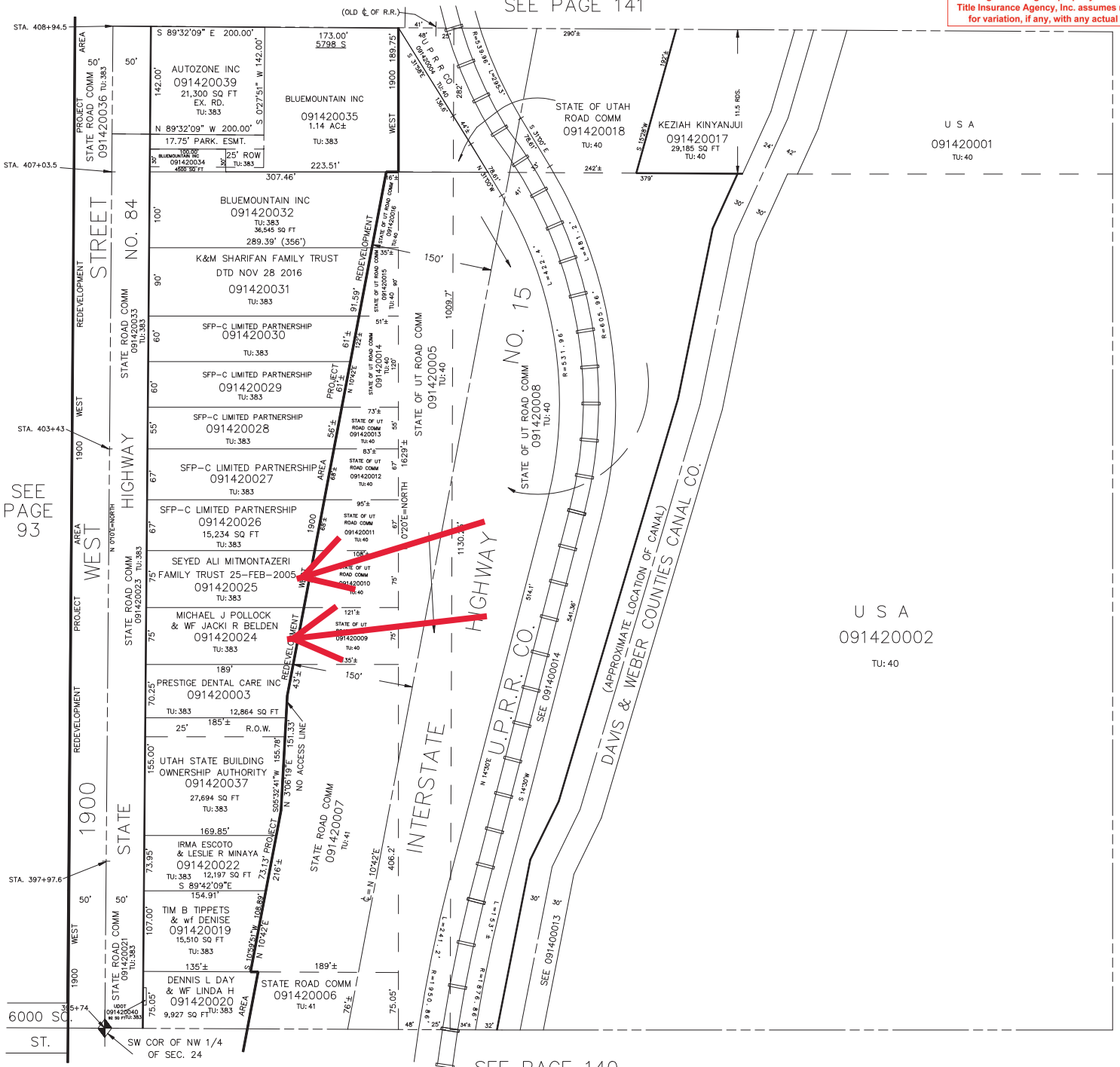
TAXING UNIT: 40, 41, 383

SCALE 1" = 100'

NORTH DAVIS COUNTY SEWER DISTRICT
ROY WATER CONSERVANCY SUBDISTRICT
BOUNDARY FOLLOWS THE WESTERLY
"NO ACCESS" LINE OF THE INTERSTATE
HIGHWAY NO. 15.

This map is provided solely for the purpose of assisting in locating the property and Cottonwood Title Insurance Agency, Inc. assumes no liability for variation, if any, with any actual survey.

SEE PAGE 141



SEE PAGE 93

SEE PAGE 140

SEE PAGE 140

FOR TAX PURPOSES ONLY