

TITLE INFORMATION

THIS SURVEY WAS COMPLETED FOR THE SALT LAKE COUNTY ENGINEERING DIVISION, UNDER THE SUPERVISION OF THE REGISTERED PROFESSIONAL ENGINEER, JOHN D. MCNEIL, LICENSE NO. 26888, AND THE REGISTERED LAND SURVEYOR, REID J. DEMMAN, LICENSE NO. 17571, ON BEHALF OF PKC APARTMENTS LLC. THE SURVEY WAS COMPLETED ON APRIL 11, 2017.

DESCRIPTION PER TITLE REPORT

THE SURVEY WAS COMPLETED FOR THE SALT LAKE COUNTY ENGINEERING DIVISION, UNDER THE SUPERVISION OF THE REGISTERED PROFESSIONAL ENGINEER, JOHN D. MCNEIL, LICENSE NO. 26888, AND THE REGISTERED LAND SURVEYOR, REID J. DEMMAN, LICENSE NO. 17571, ON BEHALF OF PKC APARTMENTS LLC. THE SURVEY WAS COMPLETED ON APRIL 11, 2017.

SCHEDULE B2 EXEMPTIONS

- 1. THE SURVEY WAS COMPLETED FOR THE SALT LAKE COUNTY ENGINEERING DIVISION, UNDER THE SUPERVISION OF THE REGISTERED PROFESSIONAL ENGINEER, JOHN D. MCNEIL, LICENSE NO. 26888, AND THE REGISTERED LAND SURVEYOR, REID J. DEMMAN, LICENSE NO. 17571, ON BEHALF OF PKC APARTMENTS LLC. THE SURVEY WAS COMPLETED ON APRIL 11, 2017.
- 2. THE SURVEY WAS COMPLETED FOR THE SALT LAKE COUNTY ENGINEERING DIVISION, UNDER THE SUPERVISION OF THE REGISTERED PROFESSIONAL ENGINEER, JOHN D. MCNEIL, LICENSE NO. 26888, AND THE REGISTERED LAND SURVEYOR, REID J. DEMMAN, LICENSE NO. 17571, ON BEHALF OF PKC APARTMENTS LLC. THE SURVEY WAS COMPLETED ON APRIL 11, 2017.
- 3. THE SURVEY WAS COMPLETED FOR THE SALT LAKE COUNTY ENGINEERING DIVISION, UNDER THE SUPERVISION OF THE REGISTERED PROFESSIONAL ENGINEER, JOHN D. MCNEIL, LICENSE NO. 26888, AND THE REGISTERED LAND SURVEYOR, REID J. DEMMAN, LICENSE NO. 17571, ON BEHALF OF PKC APARTMENTS LLC. THE SURVEY WAS COMPLETED ON APRIL 11, 2017.
- 4. THE SURVEY WAS COMPLETED FOR THE SALT LAKE COUNTY ENGINEERING DIVISION, UNDER THE SUPERVISION OF THE REGISTERED PROFESSIONAL ENGINEER, JOHN D. MCNEIL, LICENSE NO. 26888, AND THE REGISTERED LAND SURVEYOR, REID J. DEMMAN, LICENSE NO. 17571, ON BEHALF OF PKC APARTMENTS LLC. THE SURVEY WAS COMPLETED ON APRIL 11, 2017.
- 5. THE SURVEY WAS COMPLETED FOR THE SALT LAKE COUNTY ENGINEERING DIVISION, UNDER THE SUPERVISION OF THE REGISTERED PROFESSIONAL ENGINEER, JOHN D. MCNEIL, LICENSE NO. 26888, AND THE REGISTERED LAND SURVEYOR, REID J. DEMMAN, LICENSE NO. 17571, ON BEHALF OF PKC APARTMENTS LLC. THE SURVEY WAS COMPLETED ON APRIL 11, 2017.
- 6. THE SURVEY WAS COMPLETED FOR THE SALT LAKE COUNTY ENGINEERING DIVISION, UNDER THE SUPERVISION OF THE REGISTERED PROFESSIONAL ENGINEER, JOHN D. MCNEIL, LICENSE NO. 26888, AND THE REGISTERED LAND SURVEYOR, REID J. DEMMAN, LICENSE NO. 17571, ON BEHALF OF PKC APARTMENTS LLC. THE SURVEY WAS COMPLETED ON APRIL 11, 2017.
- 7. THE SURVEY WAS COMPLETED FOR THE SALT LAKE COUNTY ENGINEERING DIVISION, UNDER THE SUPERVISION OF THE REGISTERED PROFESSIONAL ENGINEER, JOHN D. MCNEIL, LICENSE NO. 26888, AND THE REGISTERED LAND SURVEYOR, REID J. DEMMAN, LICENSE NO. 17571, ON BEHALF OF PKC APARTMENTS LLC. THE SURVEY WAS COMPLETED ON APRIL 11, 2017.
- 8. THE SURVEY WAS COMPLETED FOR THE SALT LAKE COUNTY ENGINEERING DIVISION, UNDER THE SUPERVISION OF THE REGISTERED PROFESSIONAL ENGINEER, JOHN D. MCNEIL, LICENSE NO. 26888, AND THE REGISTERED LAND SURVEYOR, REID J. DEMMAN, LICENSE NO. 17571, ON BEHALF OF PKC APARTMENTS LLC. THE SURVEY WAS COMPLETED ON APRIL 11, 2017.
- 9. THE SURVEY WAS COMPLETED FOR THE SALT LAKE COUNTY ENGINEERING DIVISION, UNDER THE SUPERVISION OF THE REGISTERED PROFESSIONAL ENGINEER, JOHN D. MCNEIL, LICENSE NO. 26888, AND THE REGISTERED LAND SURVEYOR, REID J. DEMMAN, LICENSE NO. 17571, ON BEHALF OF PKC APARTMENTS LLC. THE SURVEY WAS COMPLETED ON APRIL 11, 2017.
- 10. THE SURVEY WAS COMPLETED FOR THE SALT LAKE COUNTY ENGINEERING DIVISION, UNDER THE SUPERVISION OF THE REGISTERED PROFESSIONAL ENGINEER, JOHN D. MCNEIL, LICENSE NO. 26888, AND THE REGISTERED LAND SURVEYOR, REID J. DEMMAN, LICENSE NO. 17571, ON BEHALF OF PKC APARTMENTS LLC. THE SURVEY WAS COMPLETED ON APRIL 11, 2017.

SURVEYOR'S CERTIFICATE

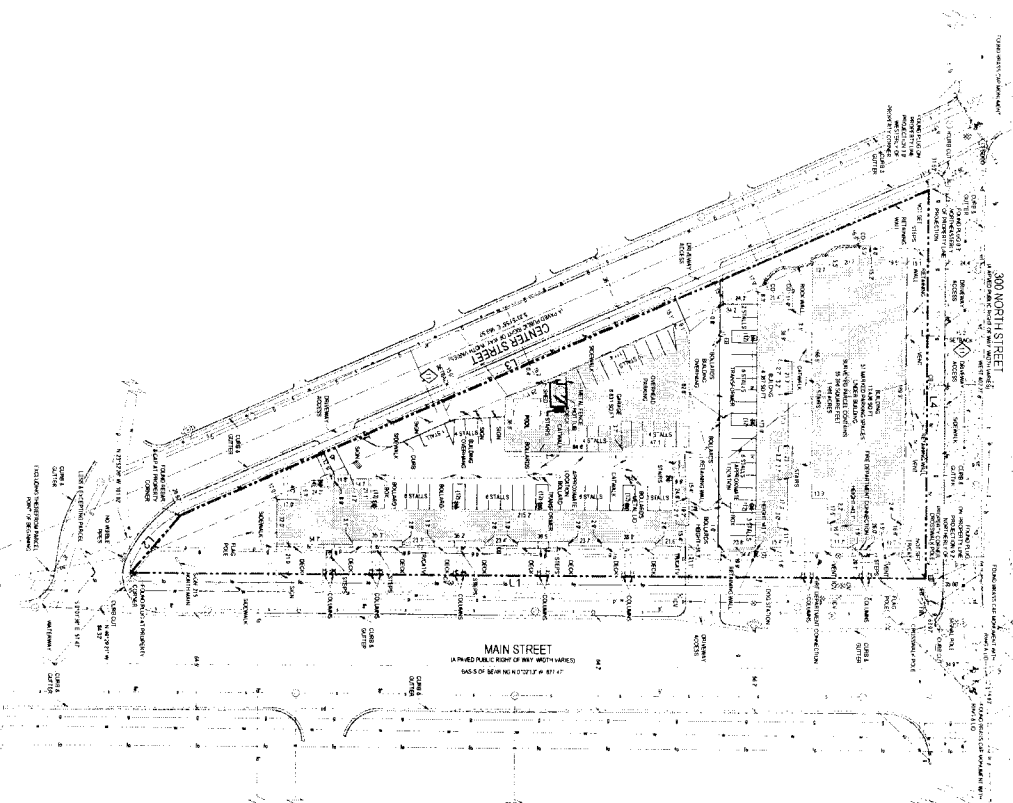
I, JOHN D. MCNEIL, REGISTERED PROFESSIONAL ENGINEER, LICENSE NO. 26888, AND REID J. DEMMAN, REGISTERED LAND SURVEYOR, LICENSE NO. 17571, HAVE SUPERVISED AND CONDUCTED THIS SURVEY IN ACCORDANCE WITH THE REQUIREMENTS OF THE UTAH PROFESSIONAL ENGINEERING ACT AND THE UTAH PROFESSIONAL LAND SURVEYING ACT. WE HAVE REVIEWED ALL RECORDS AND DATA AND HAVE FOUND THIS SURVEY TO BE ACCURATE AND CORRECT. WE HAVE ALSO REVIEWED ALL RECORDS AND DATA AND HAVE FOUND THIS SURVEY TO BE ACCURATE AND CORRECT.

SURVEY NARRATIVE

THE SURVEY WAS COMPLETED FOR THE SALT LAKE COUNTY ENGINEERING DIVISION, UNDER THE SUPERVISION OF THE REGISTERED PROFESSIONAL ENGINEER, JOHN D. MCNEIL, LICENSE NO. 26888, AND THE REGISTERED LAND SURVEYOR, REID J. DEMMAN, LICENSE NO. 17571, ON BEHALF OF PKC APARTMENTS LLC. THE SURVEY WAS COMPLETED ON APRIL 11, 2017.

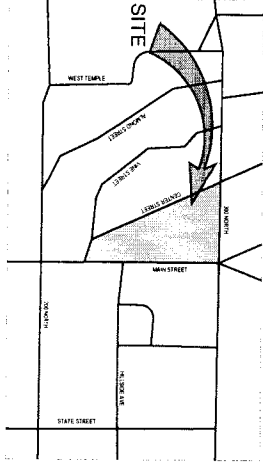
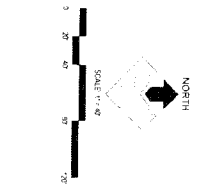
GENERAL NOTES

1. THE SURVEY WAS COMPLETED FOR THE SALT LAKE COUNTY ENGINEERING DIVISION, UNDER THE SUPERVISION OF THE REGISTERED PROFESSIONAL ENGINEER, JOHN D. MCNEIL, LICENSE NO. 26888, AND THE REGISTERED LAND SURVEYOR, REID J. DEMMAN, LICENSE NO. 17571, ON BEHALF OF PKC APARTMENTS LLC. THE SURVEY WAS COMPLETED ON APRIL 11, 2017.
2. THE SURVEY WAS COMPLETED FOR THE SALT LAKE COUNTY ENGINEERING DIVISION, UNDER THE SUPERVISION OF THE REGISTERED PROFESSIONAL ENGINEER, JOHN D. MCNEIL, LICENSE NO. 26888, AND THE REGISTERED LAND SURVEYOR, REID J. DEMMAN, LICENSE NO. 17571, ON BEHALF OF PKC APARTMENTS LLC. THE SURVEY WAS COMPLETED ON APRIL 11, 2017.
3. THE SURVEY WAS COMPLETED FOR THE SALT LAKE COUNTY ENGINEERING DIVISION, UNDER THE SUPERVISION OF THE REGISTERED PROFESSIONAL ENGINEER, JOHN D. MCNEIL, LICENSE NO. 26888, AND THE REGISTERED LAND SURVEYOR, REID J. DEMMAN, LICENSE NO. 17571, ON BEHALF OF PKC APARTMENTS LLC. THE SURVEY WAS COMPLETED ON APRIL 11, 2017.
4. THE SURVEY WAS COMPLETED FOR THE SALT LAKE COUNTY ENGINEERING DIVISION, UNDER THE SUPERVISION OF THE REGISTERED PROFESSIONAL ENGINEER, JOHN D. MCNEIL, LICENSE NO. 26888, AND THE REGISTERED LAND SURVEYOR, REID J. DEMMAN, LICENSE NO. 17571, ON BEHALF OF PKC APARTMENTS LLC. THE SURVEY WAS COMPLETED ON APRIL 11, 2017.
5. THE SURVEY WAS COMPLETED FOR THE SALT LAKE COUNTY ENGINEERING DIVISION, UNDER THE SUPERVISION OF THE REGISTERED PROFESSIONAL ENGINEER, JOHN D. MCNEIL, LICENSE NO. 26888, AND THE REGISTERED LAND SURVEYOR, REID J. DEMMAN, LICENSE NO. 17571, ON BEHALF OF PKC APARTMENTS LLC. THE SURVEY WAS COMPLETED ON APRIL 11, 2017.
6. THE SURVEY WAS COMPLETED FOR THE SALT LAKE COUNTY ENGINEERING DIVISION, UNDER THE SUPERVISION OF THE REGISTERED PROFESSIONAL ENGINEER, JOHN D. MCNEIL, LICENSE NO. 26888, AND THE REGISTERED LAND SURVEYOR, REID J. DEMMAN, LICENSE NO. 17571, ON BEHALF OF PKC APARTMENTS LLC. THE SURVEY WAS COMPLETED ON APRIL 11, 2017.
7. THE SURVEY WAS COMPLETED FOR THE SALT LAKE COUNTY ENGINEERING DIVISION, UNDER THE SUPERVISION OF THE REGISTERED PROFESSIONAL ENGINEER, JOHN D. MCNEIL, LICENSE NO. 26888, AND THE REGISTERED LAND SURVEYOR, REID J. DEMMAN, LICENSE NO. 17571, ON BEHALF OF PKC APARTMENTS LLC. THE SURVEY WAS COMPLETED ON APRIL 11, 2017.
8. THE SURVEY WAS COMPLETED FOR THE SALT LAKE COUNTY ENGINEERING DIVISION, UNDER THE SUPERVISION OF THE REGISTERED PROFESSIONAL ENGINEER, JOHN D. MCNEIL, LICENSE NO. 26888, AND THE REGISTERED LAND SURVEYOR, REID J. DEMMAN, LICENSE NO. 17571, ON BEHALF OF PKC APARTMENTS LLC. THE SURVEY WAS COMPLETED ON APRIL 11, 2017.
9. THE SURVEY WAS COMPLETED FOR THE SALT LAKE COUNTY ENGINEERING DIVISION, UNDER THE SUPERVISION OF THE REGISTERED PROFESSIONAL ENGINEER, JOHN D. MCNEIL, LICENSE NO. 26888, AND THE REGISTERED LAND SURVEYOR, REID J. DEMMAN, LICENSE NO. 17571, ON BEHALF OF PKC APARTMENTS LLC. THE SURVEY WAS COMPLETED ON APRIL 11, 2017.
10. THE SURVEY WAS COMPLETED FOR THE SALT LAKE COUNTY ENGINEERING DIVISION, UNDER THE SUPERVISION OF THE REGISTERED PROFESSIONAL ENGINEER, JOHN D. MCNEIL, LICENSE NO. 26888, AND THE REGISTERED LAND SURVEYOR, REID J. DEMMAN, LICENSE NO. 17571, ON BEHALF OF PKC APARTMENTS LLC. THE SURVEY WAS COMPLETED ON APRIL 11, 2017.



LINE TABLE

LINE NUMBER	DESCRIPTION
1	EXISTING
2	NEW
3	AS SHOWN
4	AS NOTED



PKC APARTMENTS LLC PARCEL

225 NORTH MAIN STREET

SALT LAKE CITY, UTAH

LOCATED IN THE SOUTHWEST 1/4 OF SECTION 31, TOWNSHIP 1 NORTH, RANGE 1 EAST, SALT LAKE BASE & MERIDIAN

McNEIL ENGINEERING

Economic and Sustainable Design. Professionals You Know and Trust

8619 South Sandy Parkway, Suite 200 Sandy, Utah 84070 861.255.7700 mcneilengineering.com

Civil Engineering • Consulting & Landscape Architecture

Structural Engineering • Land Surveying & HDS

S2017-08-0516

Reid J. Demman, P.L.S.

SALT LAKE COUNTY SURVEYOR

REVISIONS

REV	DATE	DESCRIPTION
1	04/11/17	FINAL

PROJECT NO. 17217

CAD FILE 17217.dwg

DRAWN BY: EAD/MS

CHECK BY: DSD/LAO

FIELD DATE: 04/11/17

DATE PLOTTED: 04/11/17

SCALE: AS SHOWN

ATTN: MS/PS

LAND TITLE SURVEY

1 OF 1