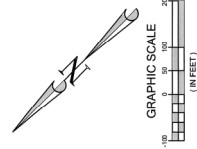
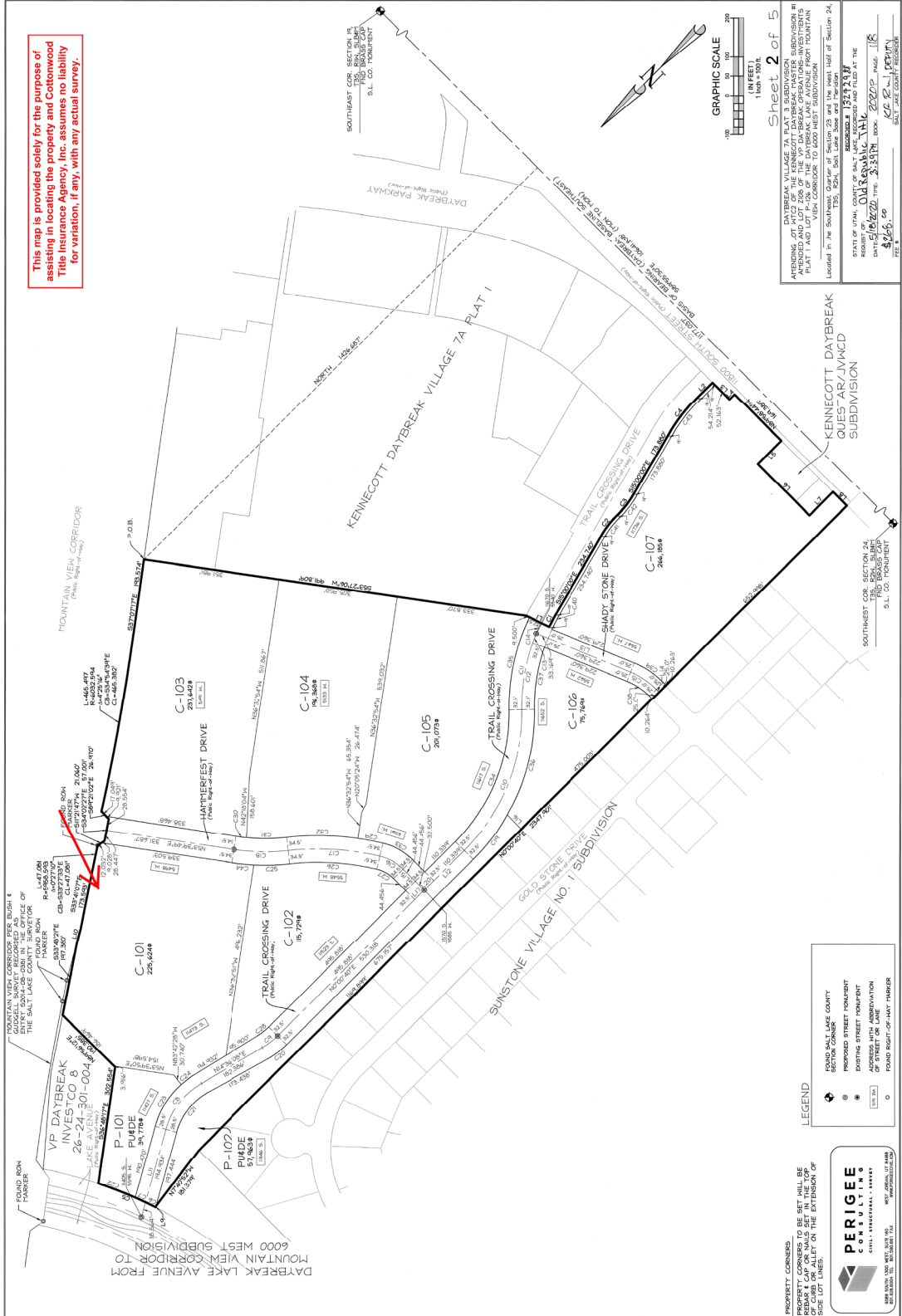




This map is provided solely for the purpose of assisting in locating the property and Cottonwood Title Insurance Agency, Inc. assumes no liability for variation, if any, with any actual survey.



**Sheet 2 of 5**

THIS SURVEY WAS MADE BY THE SALT LAKE COUNTY SURVEYOR'S OFFICE IN ACCORDANCE WITH THE KENNECOTT DAYBREAK SUBDIVISION # 2000-0001 AND LOT 2000 OF THE VP DAYBREAK SUBDIVISION # 2000-0001. THIS SURVEY WAS MADE BY THE SALT LAKE COUNTY SURVEYOR'S OFFICE IN ACCORDANCE WITH THE KENNECOTT DAYBREAK SUBDIVISION # 2000-0001 AND LOT 2000 OF THE VP DAYBREAK SUBDIVISION # 2000-0001. THIS SURVEY WAS MADE BY THE SALT LAKE COUNTY SURVEYOR'S OFFICE IN ACCORDANCE WITH THE KENNECOTT DAYBREAK SUBDIVISION # 2000-0001 AND LOT 2000 OF THE VP DAYBREAK SUBDIVISION # 2000-0001.

STATE OF UTAH, COUNTY OF SALT LAKE, RECORD AND FILED AT THE OFFICE OF THE CLERK OF COURTS, SALT LAKE COUNTY, UTAH, ON 05/16/2022, TIME 3:33 PM, BY K.C.E., CLERK.

DATE: 05/16/2022  
 TIME: 3:33 PM  
 BY: K.C.E., CLERK

**LEGEND**

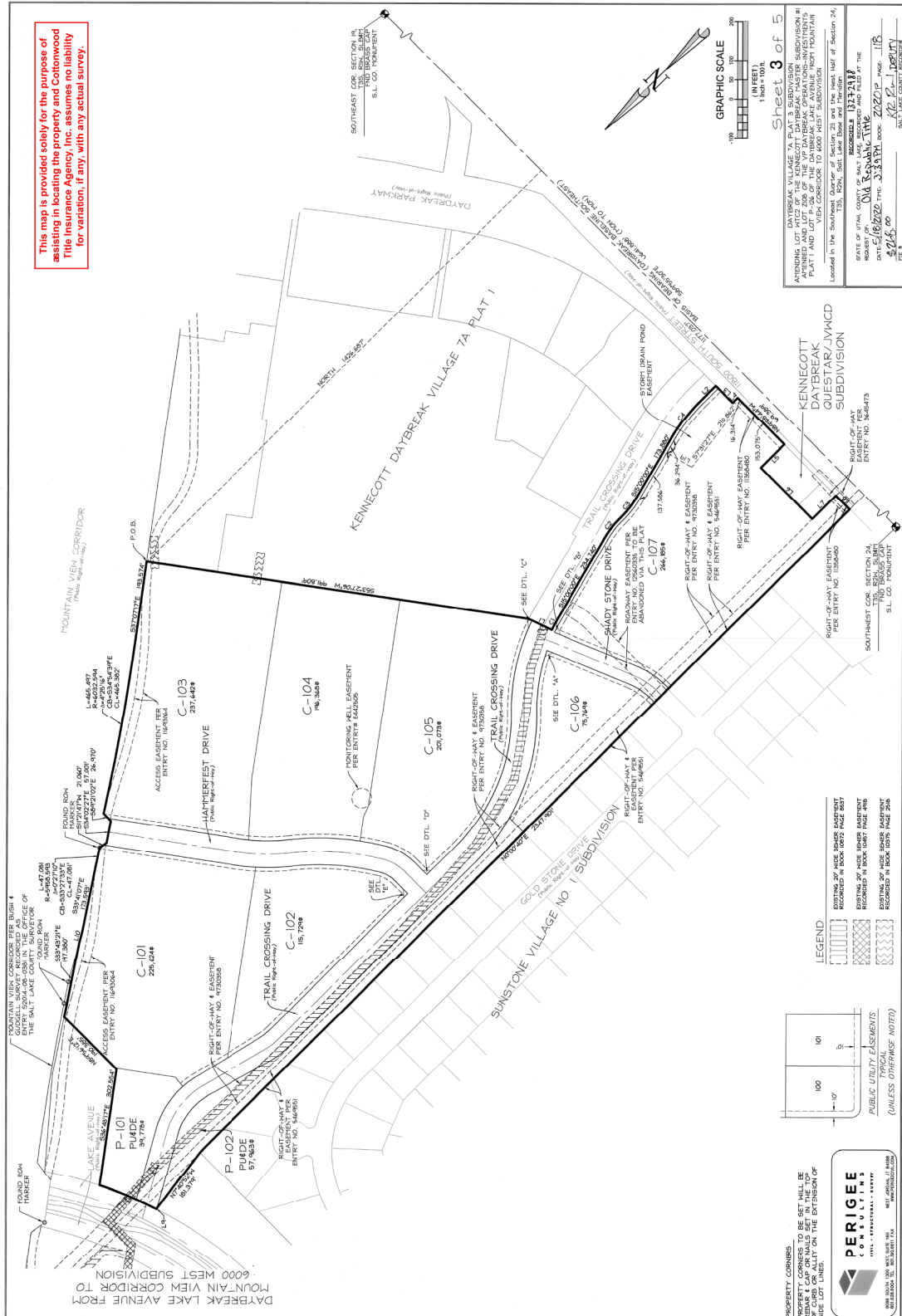
	SURVEY CORNER
	PROPOSED STREET NON-FRONT EASEMENT
	EXISTING STREET NON-FRONT EASEMENT
	ADDRESS WITH RESERVATION
	ROAD RIGHT-OF-WAY

**PERIGEE**  
 CIVIL, SURVEYING & ENGINEERING

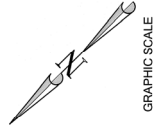
1000 SOUTH 100 WEST, SUITE 100  
 SALT LAKE CITY, UTAH 84115  
 (801) 488-1100

PROPERTY CORNERS ARE SHOWN AS BEING IN THE CORNER OF THE LOT. THE PROPERTY CORNERS ARE SHOWN AS BEING IN THE CORNER OF THE LOT. THE PROPERTY CORNERS ARE SHOWN AS BEING IN THE CORNER OF THE LOT.

This map is provided solely for the purpose of assisting in locating the property and Cottonwood Title Insurance Agency, Inc. assumes no liability for variation, if any, with any actual survey.



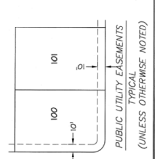
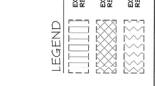
DAYBREAK LAKE AVENUE FROM MOUNTAIN VIEW CORRIDOR TO 6000 WEST SUBDIVISION



**Sheet 3 of 5**

DATBREAK VILLAGE 7A, PLAT 3, SUBDIVISION, SHOWING THE ATTACHED AND LOT 200 OF THE UP DATBREAK OPERATIONS-IMPROVEMENTS PLAT AND LOT 200 OF THE UP DATBREAK OPERATIONS-IMPROVEMENTS VILLAGE, CORRELATES TO ADD WEST SUBDIVISION Located in the Southwest Quarter of Section 25 and the West Half of Section 24, T35N, R20W, Salt Lake Base and Meridian

STATE OF UTAH, COUNTY OF SALT LAKE, RECORD AND FILE AT THE REGISTRY OF DEEDS, BOOK **2002**, PAGE **1118**  
 DATE **2007** FILE **333311** BOOK **2002** PAGE **1118**  
**Old Kennebec Title**  
 REGISTRY OF DEEDS, BOOK **2002**, PAGE **1118**  
 DATE **2007** FILE **333311** BOOK **2002** PAGE **1118**  
**Old Kennebec Title**

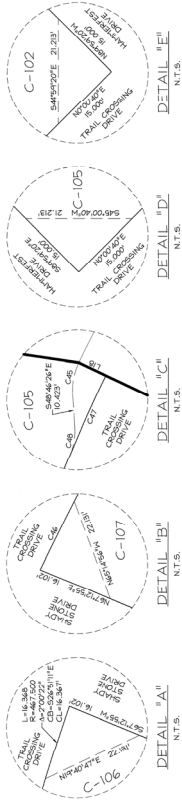


PROPERTY CORNERS TO BE SET WILL BE PLACED IN CONFORMANCE WITH THE REQUIREMENTS OF UTAH CODE § 37-2-201, AS APPLICABLE TO THE EXTENSION OF PUBLIC UTILITY LINES.

**PERIGEE**  
 A SURVEYING & MAPPING COMPANY  
 2000 SOUTH 300 WEST, SUITE 100  
 WEST VALLEY CITY, UTAH 84119  
 WWW.PERIGEE.COM

This map is provided solely for the purpose of assisting in locating the property and Cottonwood Title Insurance Agency, Inc. assumes no liability for variation, if any, with any actual survey.

SIDWALK EASEMENTS  
BEING SUBMITTED TO THE SHERIFF'S OFFICE AND  
PLANNING DEPARTMENT OF SALT LAKE COUNTY



DETAIL "E" N.T.S.

DETAIL "D" N.T.S.

DETAIL "C" N.T.S.

DETAIL "B" N.T.S.

DETAIL "A" N.T.S.

Line #	Length	Bearing
L1	46.500	S37°13'24"E
L2	54.494	S00°00'00"E
L3	41.163	N85°08'48"E
L4	8.950	S00°00'00"E
L5	85.000	N02°02'31"E
L6	197.000	N87°08'48"E
L7	85.000	S00°00'00"E
L8	48.976	N87°08'48"E
L9	27.562	S87°08'48"E
L10	233.884	N09°22'51"E
L11	203.830	N00°00'00"E
L12	144.838	N07°02'48"E
L13	262.828	N87°13'01"E
L14	92.383	N87°08'48"E
L15	76.386	N87°08'48"E
L16	93.224	N87°08'48"E
L17	34.500	S02°02'48"E
L18	85.000	S00°00'00"E
L19	34.922	N07°02'48"E
L20	34.520	N02°02'48"E

Curve #	Length	Bearing	Chord Bearing	Chord Length
C1	36.464	S71°16'00"E	S71°16'00"E	36.464
C2	47.344	S44°50'00"E	S44°50'00"E	47.344
C3	49.174	S23°50'00"E	S23°50'00"E	49.174
C4	124.220	S00°00'00"E	S00°00'00"E	124.220
C5	198.948	S00°00'00"E	S00°00'00"E	198.948
C6	29.977	S00°00'00"E	S00°00'00"E	29.977
C7	29.847	S00°00'00"E	S00°00'00"E	29.847
C8	193.495	S00°00'00"E	S00°00'00"E	193.495
C9	48.964	S00°00'00"E	S00°00'00"E	48.964
C10	400.788	S00°00'00"E	S00°00'00"E	400.788
C11	200.830	S00°00'00"E	S00°00'00"E	200.830
C12	176.087	S00°00'00"E	S00°00'00"E	176.087
C13	26.791	S00°00'00"E	S00°00'00"E	26.791
C14	29.482	S00°00'00"E	S00°00'00"E	29.482
C15	79.574	S00°00'00"E	S00°00'00"E	79.574
C16	48.964	S00°00'00"E	S00°00'00"E	48.964
C17	29.847	S00°00'00"E	S00°00'00"E	29.847
C18	193.495	S00°00'00"E	S00°00'00"E	193.495
C19	48.964	S00°00'00"E	S00°00'00"E	48.964
C20	400.788	S00°00'00"E	S00°00'00"E	400.788
C21	200.830	S00°00'00"E	S00°00'00"E	200.830
C22	176.087	S00°00'00"E	S00°00'00"E	176.087
C23	26.791	S00°00'00"E	S00°00'00"E	26.791
C24	29.482	S00°00'00"E	S00°00'00"E	29.482
C25	79.574	S00°00'00"E	S00°00'00"E	79.574
C26	48.964	S00°00'00"E	S00°00'00"E	48.964
C27	29.847	S00°00'00"E	S00°00'00"E	29.847
C28	193.495	S00°00'00"E	S00°00'00"E	193.495
C29	48.964	S00°00'00"E	S00°00'00"E	48.964
C30	400.788	S00°00'00"E	S00°00'00"E	400.788
C31	200.830	S00°00'00"E	S00°00'00"E	200.830
C32	176.087	S00°00'00"E	S00°00'00"E	176.087
C33	26.791	S00°00'00"E	S00°00'00"E	26.791
C34	29.482	S00°00'00"E	S00°00'00"E	29.482
C35	79.574	S00°00'00"E	S00°00'00"E	79.574
C36	48.964	S00°00'00"E	S00°00'00"E	48.964
C37	29.847	S00°00'00"E	S00°00'00"E	29.847
C38	193.495	S00°00'00"E	S00°00'00"E	193.495
C39	48.964	S00°00'00"E	S00°00'00"E	48.964
C40	400.788	S00°00'00"E	S00°00'00"E	400.788
C41	200.830	S00°00'00"E	S00°00'00"E	200.830
C42	176.087	S00°00'00"E	S00°00'00"E	176.087
C43	26.791	S00°00'00"E	S00°00'00"E	26.791
C44	29.482	S00°00'00"E	S00°00'00"E	29.482
C45	79.574	S00°00'00"E	S00°00'00"E	79.574
C46	48.964	S00°00'00"E	S00°00'00"E	48.964
C47	29.847	S00°00'00"E	S00°00'00"E	29.847
C48	193.495	S00°00'00"E	S00°00'00"E	193.495
C49	48.964	S00°00'00"E	S00°00'00"E	48.964
C50	400.788	S00°00'00"E	S00°00'00"E	400.788
C51	200.830	S00°00'00"E	S00°00'00"E	200.830
C52	176.087	S00°00'00"E	S00°00'00"E	176.087
C53	26.791	S00°00'00"E	S00°00'00"E	26.791
C54	29.482	S00°00'00"E	S00°00'00"E	29.482
C55	79.574	S00°00'00"E	S00°00'00"E	79.574
C56	48.964	S00°00'00"E	S00°00'00"E	48.964
C57	29.847	S00°00'00"E	S00°00'00"E	29.847
C58	193.495	S00°00'00"E	S00°00'00"E	193.495
C59	48.964	S00°00'00"E	S00°00'00"E	48.964
C60	400.788	S00°00'00"E	S00°00'00"E	400.788
C61	200.830	S00°00'00"E	S00°00'00"E	200.830
C62	176.087	S00°00'00"E	S00°00'00"E	176.087
C63	26.791	S00°00'00"E	S00°00'00"E	26.791
C64	29.482	S00°00'00"E	S00°00'00"E	29.482
C65	79.574	S00°00'00"E	S00°00'00"E	79.574
C66	48.964	S00°00'00"E	S00°00'00"E	48.964
C67	29.847	S00°00'00"E	S00°00'00"E	29.847
C68	193.495	S00°00'00"E	S00°00'00"E	193.495
C69	48.964	S00°00'00"E	S00°00'00"E	48.964
C70	400.788	S00°00'00"E	S00°00'00"E	400.788
C71	200.830	S00°00'00"E	S00°00'00"E	200.830
C72	176.087	S00°00'00"E	S00°00'00"E	176.087
C73	26.791	S00°00'00"E	S00°00'00"E	26.791
C74	29.482	S00°00'00"E	S00°00'00"E	29.482
C75	79.574	S00°00'00"E	S00°00'00"E	79.574
C76	48.964	S00°00'00"E	S00°00'00"E	48.964
C77	29.847	S00°00'00"E	S00°00'00"E	29.847
C78	193.495	S00°00'00"E	S00°00'00"E	193.495
C79	48.964	S00°00'00"E	S00°00'00"E	48.964
C80	400.788	S00°00'00"E	S00°00'00"E	400.788
C81	200.830	S00°00'00"E	S00°00'00"E	200.830
C82	176.087	S00°00'00"E	S00°00'00"E	176.087
C83	26.791	S00°00'00"E	S00°00'00"E	26.791
C84	29.482	S00°00'00"E	S00°00'00"E	29.482
C85	79.574	S00°00'00"E	S00°00'00"E	79.574
C86	48.964	S00°00'00"E	S00°00'00"E	48.964
C87	29.847	S00°00'00"E	S00°00'00"E	29.847
C88	193.495	S00°00'00"E	S00°00'00"E	193.495
C89	48.964	S00°00'00"E	S00°00'00"E	48.964
C90	400.788	S00°00'00"E	S00°00'00"E	400.788
C91	200.830	S00°00'00"E	S00°00'00"E	200.830
C92	176.087	S00°00'00"E	S00°00'00"E	176.087
C93	26.791	S00°00'00"E	S00°00'00"E	26.791
C94	29.482	S00°00'00"E	S00°00'00"E	29.482
C95	79.574	S00°00'00"E	S00°00'00"E	79.574
C96	48.964	S00°00'00"E	S00°00'00"E	48.964
C97	29.847	S00°00'00"E	S00°00'00"E	29.847
C98	193.495	S00°00'00"E	S00°00'00"E	193.495
C99	48.964	S00°00'00"E	S00°00'00"E	48.964
C100	400.788	S00°00'00"E	S00°00'00"E	400.788

Curve #	Length	Bearing	Delta	Chord Bearing	Chord Length
C1	64.800	S37°13'24"E	0°18'00"E	N07°19'54"E	64.627
C2	71.430	S44°50'00"E	0°18'00"E	N07°19'54"E	71.468
C3	121.004	S00°00'00"E	0°18'00"E	N07°19'54"E	121.444
C4	198.948	S00°00'00"E	0°18'00"E	N07°19'54"E	199.544
C5	10.476	S00°00'00"E	0°00'00"E	S00°00'00"E	10.367
C6	16.346	S00°00'00"E	0°00'00"E	S00°00'00"E	16.367
C7	27.834	S00°00'00"E	0°00'00"E	N07°02'48"E	27.831
C8	9.234	S00°00'00"E	0°00'00"E	S00°00'00"E	9.133

Sheet 4 of 5

RECORDED PLAT OF THE TRACT OF LAND CONTAINING THE TRAIL DRIVE AND SIDEWALK EASEMENTS BEING SUBMITTED TO THE SHERIFF'S OFFICE AND PLANNING DEPARTMENT OF SALT LAKE COUNTY. RECORD NO. 1327293.  
PREPARED BY: PERIGEE CONSULTANTS  
DATE: 01/13/2020  
BY: [Signature]  
SCALE: AS SHOWN  
LOCATION: IN THE Southeast Quarter of Section 28 and the West Half of Section 24, Township 105 North, Range 132 West, 4th Meridian, Salt Lake County, Utah.

PERIGEE CONSULTANTS  
CIVIL ENGINEERING & SURVEYING  
5540 SOUTH WINTHROP WAY  
SUITE 200, WEST VALLEY CITY, UT 84119  
801.433.8200  
WWW.PERIGEECONSULTANTS.COM

UTAH COUNTY SALT LAKE RECORD AND FILED AT THE OFFICE OF THE DEPUTY CLERK OF THE DISTRICT COURT OF THE DISTRICT OF SALT LAKE COUNTY, UTAH  
DATE: 01/13/2020 TIME: 1:33 PM

