

INDIAN SUMMER SUBDIVISION

PLANNING COMMISSION APPROVED THIS 18th DAY OF December A.D. 2018. BY THE MIDDAY CITY PLANNING COMMISSION.

MIDDAY CITY ENGINEER APPROVED THIS 18th DAY OF December A.D. 2018.

COUNTY SURVEYOR APPROVED THIS 5th DAY OF December A.D. 2018.

PLANNING DEPARTMENT APPROVED THIS 13th DAY OF December A.D. 2018.

APPROVED THIS 13th DAY OF December A.D. 2018.

APPROVED THIS 13th DAY OF December A.D. 2018.

APPROVED THIS 13th DAY OF December A.D. 2018.

APPROVED THIS 13th DAY OF December A.D. 2018.

APPROVED THIS 13th DAY OF December A.D. 2018.

APPROVED THIS 13th DAY OF December A.D. 2018.

APPROVED THIS 13th DAY OF December A.D. 2018.

APPROVED THIS 13th DAY OF December A.D. 2018.

APPROVED THIS 13th DAY OF December A.D. 2018.

APPROVED THIS 13th DAY OF December A.D. 2018.

APPROVED THIS 13th DAY OF December A.D. 2018.

APPROVED THIS 13th DAY OF December A.D. 2018.

APPROVED THIS 13th DAY OF December A.D. 2018.

APPROVED THIS 13th DAY OF December A.D. 2018.

APPROVED THIS 13th DAY OF December A.D. 2018.



Surveyor's Certificate No. 10165097

APPROVED THIS 13th DAY OF December A.D. 2018.

APPROVED THIS 13th DAY OF December A.D. 2018.

APPROVED THIS 13th DAY OF December A.D. 2018.

APPROVED THIS 13th DAY OF December A.D. 2018.

APPROVED THIS 13th DAY OF December A.D. 2018.

APPROVED THIS 13th DAY OF December A.D. 2018.

APPROVED THIS 13th DAY OF December A.D. 2018.

APPROVED THIS 13th DAY OF December A.D. 2018.

APPROVED THIS 13th DAY OF December A.D. 2018.

APPROVED THIS 13th DAY OF December A.D. 2018.

APPROVED THIS 13th DAY OF December A.D. 2018.

APPROVED THIS 13th DAY OF December A.D. 2018.

APPROVED THIS 13th DAY OF December A.D. 2018.

APPROVED THIS 13th DAY OF December A.D. 2018.

APPROVED THIS 13th DAY OF December A.D. 2018.

APPROVED THIS 13th DAY OF December A.D. 2018.

APPROVED THIS 13th DAY OF December A.D. 2018.

APPROVED THIS 13th DAY OF December A.D. 2018.

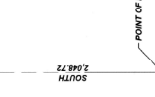
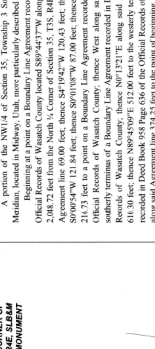
BOUNDARY DESCRIPTION
A portion of the NW1/4 of Section 35, Township 3 S, Range 1 E, Salt Lake Base &

OWNER'S DEDICATION
KNOWN ALL BY THESE PRESENTS THAT THE UNDERSIGNED OWNERS OF THE DISSEMINATED TRACT OF LAND ABOVE HAVING CAUSED THE SAME TO BE SUBDIVIDED

LIMITED LIABILITY ACKNOWLEDGMENT
STATE OF UTAH
COUNTY OF SALT LAKE
ON THE 15th DAY OF May, A.D. 2018, PERSONALLY APPEARED BEFORE ME, THE UNDE

MIDDAY CITY ATTORNEY
APPROVED THIS 20th DAY OF May, A.D. 2018

INDIAN SUMMER SUBDIVISION
A PART OF THE SW1/4 OF SECTION 35, TOWNSHIP 3 SOUTH, RANGE 1 EAST, SALT LAKE BASE & MERIDIAN, LOCATED IN MIDDAY, UTAH



LEGEND
PUBLIC TRAIL EASEMENT
COMMON AREA - 1/4 ACRES
STREET MONUMENT (COTTON)

This map is provided solely for the purpose of assisting in locating the property and Cottonwood Title Insurance Agency, Inc. assumes no liability for variation, if any, with any actual survey.

Curve Table with columns: CURVE NUMBER, DELTA, LENGTH, CURVATURE, CHORD LENGTH. Contains data for curves C1 through C12.

Line Table with columns: LINE NUMBER, DIRECTION, LENGTH. Contains data for lines L1 through L12.

NOTES
1. COMMON AREAS ARE DEDICATED AS PUBLIC UTILITY AND DRAINAGE EASEMENTS TO THE PUBLIC STREET.

MIDDAY CITY ATTORNEY
APPROVED THIS 20th DAY OF May, A.D. 2018

INDIAN SUMMER SUBDIVISION
MIDDAY CITY ATTORNEY
APPROVED THIS 20th DAY OF May, A.D. 2018

PLANNING COMMISSION APPROVED THIS 18th DAY OF December A.D. 2018.

MIDDAY CITY ENGINEER APPROVED THIS 18th DAY OF December A.D. 2018.

COUNTY SURVEYOR APPROVED THIS 5th DAY OF December A.D. 2018.

PLANNING DEPARTMENT APPROVED THIS 13th DAY OF December A.D. 2018.

FOCUS ENGINEERING AND SURVEYING, LLC
32 WEST CENTER STREET
MIDVALE, UTAH 84047 PH: (801) 352-0075
www.focusinc.com