

1980-768

**MOSQUITO ABATEMENT
DISTRICT NO.1**

INCLUDES THE FOLLOWING TERRITORY LOCATED WITHIN THE UNINCORPORATED TERRITORY OF CACHE COUNTY, UTAH:

SECTIONS 34, 35, AND 36 IN RANGE 1 WEST AND TOWNSHIP 12 NORTH;

SECTION 31 IN RANGE 1 EAST AND TOWNSHIP 12 NORTH

SECTIONS 6, 7, 17, 18, 19, AND 20 IN RANGE 1 EAST AND TOWNSHIP 11 NORTH

SECTIONS 1, 2, 3, 10, 11, 12, 13, 14, 15, 22, 23 AND 24 IN RANGE 1 WEST AND TOWNSHIP 11 NORTH

EXCLUDING, HOWEVER, THOSE AREAS LOCATED WITHIN THE CORPORATE BOUNDARIES OF THE CITY OF LOGAN AND ALSO WITHIN THE CORPORATE BOUNDARIES OF THE CITY OF NIBLEY.

SCALE 1" = 2,000'

COUNTY RECORDER'S CERTIFICATE

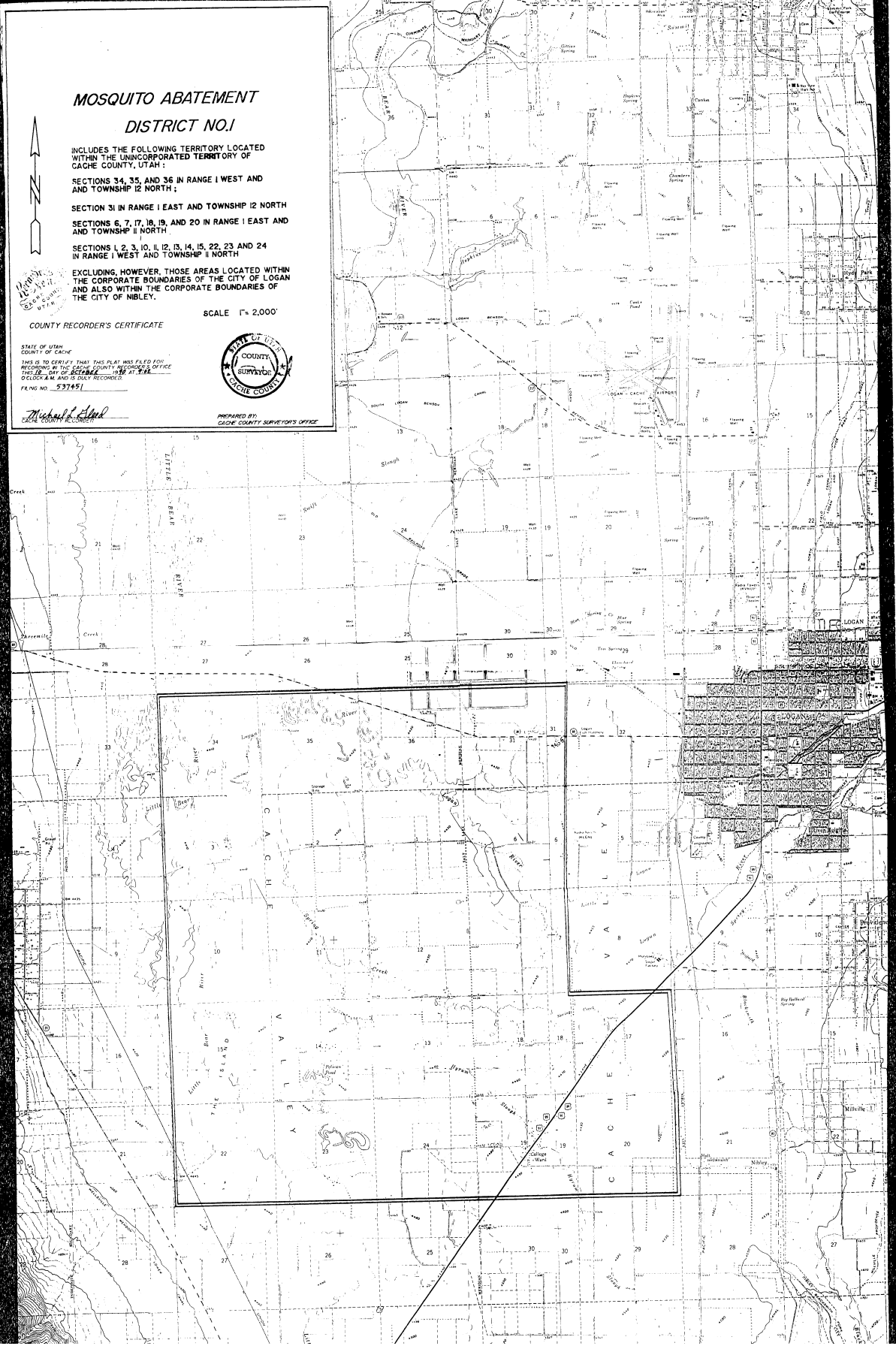
STATE OF UTAH
COUNTY OF CACHE

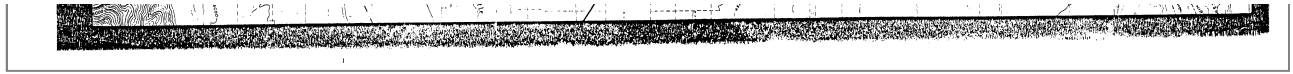
THIS IS TO CERTIFY THAT THIS PLAT WAS FILED FOR RECORDING IN THE CACHE COUNTY RECORDER'S OFFICE ON THE 15TH DAY OF SEPTEMBER 1980 AT 10:00 O'CLOCK A.M. AND IS FULLY RECORDED.

FILE NO. 537451

Michael Alford
CACHE COUNTY RECORDER

PREPARED BY:
CACHE COUNTY SURVEYOR'S OFFICE





Entry #537451