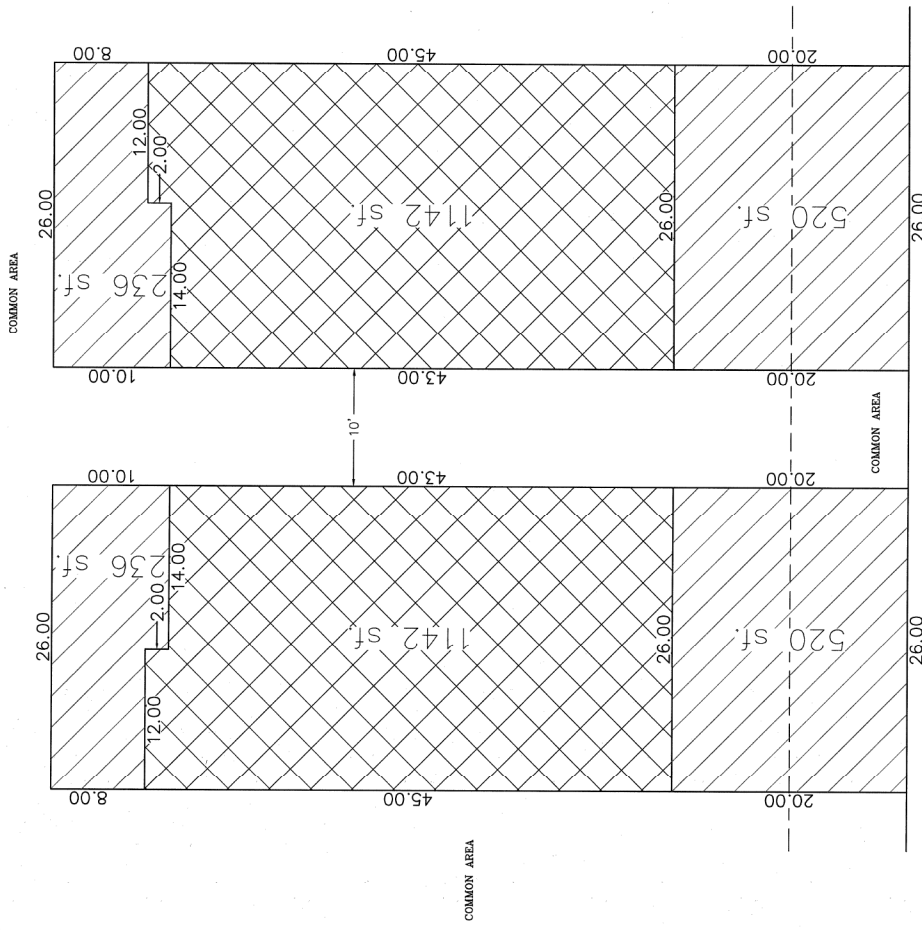


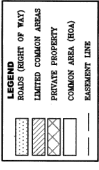
FOOTHILL VILLAGE SUBDIVISION PLAT 'V'

LOCATED IN THE NORTHEAST CORNER OF SECTION 11,
TOWNSHIP 10, SOUTH
RANGE 1 EAST, SALT LAKE BASE AND MERIDIAN
Samoaquin, Utah County, Utah

This map is provided solely for the purpose of assisting in locating the property and Cottonwood Title Insurance Agency, Inc. assumes no liability for variation, if any, with any actual survey.



COMMON AREA



RIGHT OF WAY
(BACK OF WALK)

5' SIDEWALK

2' CURB & GUTTER

PUBLIC ROAD

TYPICAL PATIO HOME LAYOUT

CURVE LENGTH	RADIUS	CHORD DIST.	CHORD BEG. DELTA
C1	23.96	15.00	21.21
C2	23.96	15.00	387.772°E
C3	23.96	15.00	52.423°W
C4	133.25	15.00	172.95
C5	133.25	15.00	52.423°E
C6	23.96	15.00	31.51
C7	23.96	15.00	31.51
C8	184.14	15.00	189.90
C9	23.96	15.00	31.51
C10	65.86	35.00	65.93
C11	158.35	35.00	158.32
C12	24.91	35.00	24.91
C13	99.90	35.00	99.90
C14	17.76	35.00	17.76
C15	27.42	15.00	23.78
C16	27.42	15.00	23.78
C17	46.97	35.00	46.97
C18	46.97	35.00	46.97
C19	26.00	10.00	26.00
C20	26.00	10.00	26.00
C21	26.00	10.00	26.00
C22	26.00	10.00	26.00
C23	26.00	10.00	26.00
C24	26.00	10.00	26.00
C25	26.00	10.00	26.00
C26	26.00	10.00	26.00
C27	26.00	10.00	26.00
C28	26.00	10.00	26.00
C29	26.00	10.00	26.00
C30	26.00	10.00	26.00
C31	26.00	10.00	26.00
C32	26.00	10.00	26.00
C33	26.00	10.00	26.00
C34	26.00	10.00	26.00
C35	26.00	10.00	26.00
C36	26.00	10.00	26.00
C37	26.00	10.00	26.00
C38	26.00	10.00	26.00
C39	26.00	10.00	26.00
C40	26.00	10.00	26.00
C41	26.00	10.00	26.00
C42	26.00	10.00	26.00
C43	26.00	10.00	26.00
C44	26.00	10.00	26.00
C45	26.00	10.00	26.00
C46	26.00	10.00	26.00
C47	26.00	10.00	26.00
C48	26.00	10.00	26.00
C49	26.00	10.00	26.00
C50	26.00	10.00	26.00
C51	26.00	10.00	26.00
C52	26.00	10.00	26.00
C53	26.00	10.00	26.00
C54	26.00	10.00	26.00
C55	26.00	10.00	26.00
C56	26.00	10.00	26.00
C57	26.00	10.00	26.00
C58	26.00	10.00	26.00
C59	26.00	10.00	26.00
C60	26.00	10.00	26.00
C61	26.00	10.00	26.00
C62	26.00	10.00	26.00
C63	26.00	10.00	26.00
C64	26.00	10.00	26.00
C65	26.00	10.00	26.00
C66	26.00	10.00	26.00
C67	26.00	10.00	26.00
C68	26.00	10.00	26.00
C69	26.00	10.00	26.00
C70	26.00	10.00	26.00
C71	26.00	10.00	26.00
C72	26.00	10.00	26.00
C73	26.00	10.00	26.00
C74	26.00	10.00	26.00
C75	26.00	10.00	26.00
C76	26.00	10.00	26.00
C77	26.00	10.00	26.00
C78	26.00	10.00	26.00
C79	26.00	10.00	26.00
C80	26.00	10.00	26.00
C81	26.00	10.00	26.00
C82	26.00	10.00	26.00
C83	26.00	10.00	26.00
C84	26.00	10.00	26.00
C85	26.00	10.00	26.00
C86	26.00	10.00	26.00
C87	26.00	10.00	26.00
C88	26.00	10.00	26.00
C89	26.00	10.00	26.00
C90	26.00	10.00	26.00
C91	26.00	10.00	26.00
C92	26.00	10.00	26.00
C93	26.00	10.00	26.00
C94	26.00	10.00	26.00
C95	26.00	10.00	26.00
C96	26.00	10.00	26.00
C97	26.00	10.00	26.00
C98	26.00	10.00	26.00
C99	26.00	10.00	26.00
C100	26.00	10.00	26.00

DATE: 10/20/20
BY: [Signature]
UTAH COUNTY RECORDER
RECORDED FOR SAMOAQUIN CITY CORPORATION