

0
/ 41

STATE OF UTAH



ENT 114949:2008 PG 1 of 41
RANDALL A. COVINGTON
UTAH COUNTY RECORDER
2008 Oct 22 3:02 pm FEE 0.00 BY TO
RECORDED FOR STATE OF UTAH

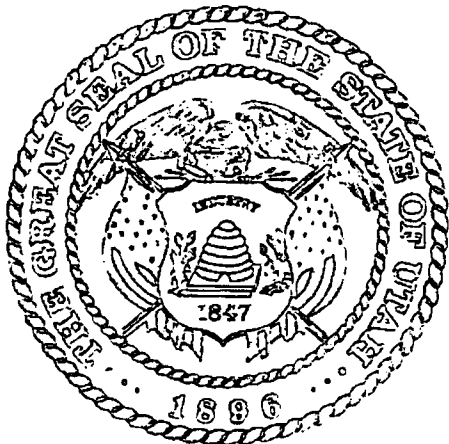
OFFICE OF THE LIEUTENANT GOVERNOR

CERTIFICATE OF CREATION

I, GARY R. HERBERT, LIEUTENANT GOVERNOR OF THE STATE OF UTAH, HEREBY CERTIFY THAT there has been filed in my office a notice of creation of the UTAH VALLEY DISPATCH SPECIAL SERVICE DISTRICT, dated October 3rd, 2008, complying with Section 17D-1-209, Utah Code Annotated, 1953, as amended.

NOW, THEREFORE, notice is hereby given to all whom it may concern that the attached is a true and correct copy of the notice of creation, referred to above, on file with the Office of the Lieutenant Governor pertaining to the UTAH VALLEY DISPATCH SPECIAL SERVICE DISTRICT, located in Utah County, State of Utah.

IN TESTIMONY WHEREOF, I have hereunto set my hand and affixed the Great Seal of the State of Utah at Salt Lake City, this 20th day of October, 2008.




GARY R. HERBERT
Lieutenant Governor



Utah County Attorney

Civil Division

Jeffrey R. Buhman, County Attorney
E. Kent Sundberg, Civil Division Chief

E. Kent Sundberg
David H. Shawcroft
Kent O. Willis
M. Cort Griffin

Chris Yannelli
Paul Wake
Robert J. Moore
Dianne R. Orcutt

100 East Center Street,
Suite 2100
Provo, UT 84606
Phone (801)851-8026
Facsimile (801)851-8009

ENT 114949:2008 PG 2 of 41

October 3, 2008

Utah State Lt. Governor
Utah State Capitol Complex
P.O. Box 142325
Salt Lake City, UT 84114-2325

~~Re: Creation of the Utah Valley Dispatch Special Service District~~

To Whom It May Concern:

Pursuant to Section 17D-1-209, Utah Code Annotated, 1953 as amended, please find enclosed a Notice and Certification, with accompanying copy of the fully executed and recorded Resolution which created the Utah Valley Dispatch Special Service District, Utah County, Utah, and provided for other related matters. Also attached to the Notice and Certification is a map showing the boundaries of the Utah Valley Dispatch Special Service District.

If you have any questions regarding the enclosed, please contact our office.

Sincerely,

E. Kent Sundberg
Deputy Utah County Attorney

Encl.

L:\KENTS\Dispatch SSD\Lt Gov Dispatch SSD Certification let.wpd

Received

OCT 13 2008
Map Sent 10/14
Gary R. Herbert
Lieutenant Governor

NOTICE AND CERTIFICATION

Pursuant to the provisions of Section 17D-1-209, Utah Code Annotated, 1953 as amended, notice is hereby given that the Board of County Commissioners, Utah County, Utah, created the Utah Valley Dispatch Special Service District, Utah County, Utah, by Resolution adopted on September 30, 2008, and recorded by the Utah County Recorder on September 30, 2008. A copy of said Resolution is attached hereto as Exhibit "A" and incorporated herein by reference.

A map showing the boundaries of the Utah Valley Dispatch Special Service District is attached hereto as Exhibit "B" and incorporated herein by reference.

Pursuant to the provisions of Section 17D-1-209, Utah Code Annotated, 1953 as amended, certification is hereby made by the undersigned officers that all necessary legal requirements relating to the creation of the Utah Valley Dispatch Special Service District have been fully met.

DATED this 3rd of October, 2008.

ATTEST:
Bryan E. Thompson
Utah County Clerk/Auditor

By: *Synda Strickland*
Deputy

BOARD OF COUNTY COMMISSIONERS
UTAH COUNTY, UTAH

[Signature]
GARY J. ANDERSON, Chair

[Signature]
STEVE WHITE, Commissioner

[Signature]
LARRY A. ELLERTSON, Commissioner

APPROVED AS TO FORM:
Jeffrey R. Buhman
Utah County Attorney

By: *E. Kent Funder*
Deputy

EXHIBIT "A"

Resolution No. 2008-126

Provo City, Utah
September 30, 2008

The Board of County Commissioners of Utah County, Utah (hereinafter the "Board") met in regular public session at the regular meeting place of the Board in the Utah County Administration Building in Provo City, Utah, at 9:00 a.m. on September 30, 2008.

On roll call, the following members of the Board were determined present:

Larry A. Ellertson	Vice-Chair
Steve White	Commissioner

~~ENT 107508:2008 PG 1 of 35
RANDALL A. COVINGTON
UTAH COUNTY RECORDER
2008 Sep 30 2:35 pm FEE 0.00 BY SS
RECORDED FOR UTAH COUNTY ATTORNEY~~

Commissioner Gary J. Anderson was excused.

There were also present:

Bryan E. Thompson	County Clerk/Auditor
Linda Strickland	Deputy County Clerk/Auditor
E. Kent Sundberg	Deputy Utah County Attorney

After the meeting had been duly called to order, the Deputy County Clerk/Auditor presented to the Board an affidavit evidencing the giving of not less than twenty-four (24) hours public notice of the agenda, date, time and place of the September 30, 2008, regular meeting in compliance with the requirements of Section 52-4-202, Utah Code Annotated, 1953 as amended, by (1) posting written notice of the meeting at the principal office of the Board, and (2) providing notice to at least one newspaper of general circulation within the geographic jurisdiction of Utah County, Utah, or to a local media correspondent. The affidavit was ordered recorded in the minutes of the meeting and is as follows:

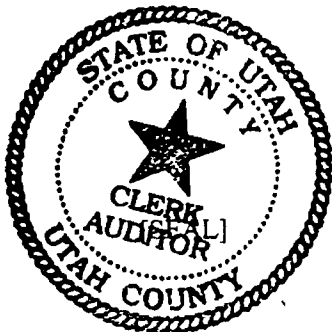
STATE OF UTAH)
 :
COUNTY OF UTAH)

I, the undersigned, the duly qualified and acting Deputy County Clerk/Auditor of Utah County, Utah, and Deputy Clerk of the Board of County Commissioners of Utah County, Utah, do hereby certify, according to the records of the Board in my official possession, and upon my own knowledge and belief, that in accordance with the requirements of Section 52-4-202, Utah Code Annotated, 1953 as amended, I gave not less than twenty-four (24) hours public notice of the agenda, date, time and place of the September 30, 2008 regular public meeting held by the Board of County Commissioners of Utah County, Utah, by:

(a) causing a Notice of Public Meeting to be posted at the principal office of the Board at the ~~Utah County Administration Building, in Provo City, Utah, on September 26, 2008,~~ at least twenty-four (24) hours before the convening of the meeting, in the form attached hereto as **Attachment I**; said Notice of Public Meeting having continuously remained so posted and available for public inspection during the regular office hours of the Board until the convening of the meeting; and

(b) causing a copy of the Notice of Public Meeting in the form attached hereto as **Attachment I** to be provided on September 26, 2008 , at least twenty-four (24) hours before the convening of the meeting, to The Daily Herald, a newspaper of general circulation within the geographic jurisdiction of Utah County, Utah, and to any other local media correspondent, newspaper, radio station or television station which has requested notification of meetings of the Board.

IN WITNESS WHEREOF, I have hereunto subscribed my official signature and impressed hereon the official seal of Utah County, Utah, this 30th day of September, 2008.



Linda Strickland
Deputy County Clerk/Auditor
Utah County, Utah

ATTACHMENT I

PUBLIC NOTICE IS HEREBY GIVEN THAT THE
BOARD OF COMMISSIONERS OF UTAH COUNTY, UTAH

WILL HOLD ITS REGULAR PUBLIC MEETING
 IN THE COMMISSION CHAMBERS, ROOM 1400
 OF THE UTAH COUNTY ADMINISTRATION BUILDING
 100 East Center Street, Provo UT

September 30, 2008 - 9:00 A.M.

CONSENT

1. APPROVE AND AUTHORIZE THE COMMISSION CHAIR TO SIGN THE YEARLY MAINTENANCE AGREEMENT WITH CANON BUSINESS SOLUTIONS - Located at Jail Industries
2. DECLARE AS SURPLUS A GLOCK 23 DUTY PISTOL, SN LPE913, WITH AN ESTIMATED VALUE OF \$250 TO BE GIVEN TO LT. DAVE SNYDER UPON RETIREMENT, FOR SERVING THE UTAH COUNTY SHERIFF'S OFFICE AND THE CITIZENS OF UTAH COUNTY
3. APPROVE AND RATIFY THE COMMISSION CHAIR TO SIGN THE SUPPLEMENTAL LAW ENFORCEMENT CONTRACT WITH UCLA FOOTBALL TO SECURE THEIR TRAVELS FROM SALT LAKE CITY AIRPORT TO PROVO ON SEPTEMBER 12 AND 13, 2008 (Verbal authorization given by Commissioner Anderson)
4. APPROVE AND RATIFY THE COMMISSION CHAIR TO SIGN THE SUPPLEMENTAL LAW ENFORCEMENT CONTRACT WITH FRAN KUHN PRODUCTIONS (HONDA MOTORCYCLE TO SECURE THE SQUAW PEAK ROAD AREA ON OCTOBER 1, 2008 (Verbal authorization given by Commissioner Anderson)
5. APPROVE TAX CREDITS AND REFUNDS RECOMMENDED BY THE COUNTY ASSESSOR'S OFFICE IN CANCELLATION AND CORRECTION LETTER NO. 216, DATED SEPTEMBER 24, 2008
6. APPROVE REQUESTED EXEMPTIONS ON LIST DATED SEPTEMBER 22, 2008, APPLIED FOR BY TAXPAYERS, FOR PAYMENT OF TAXES WHERE THE MARKET VALUE OF EQUIPMENT WAS LESS THAN \$3,570 AS PROVIDED BY THE UTAH STATE LEGISLATURE
7. APPROVE TAX CREDITS AND REFUNDS RECOMMENDED BY THE COUNTY ASSESSOR'S OFFICE IN CANCELLATION AND CORRECTION LETTER NO. 60183, DATED SEPTEMBER 25, 2008
8. APPROVE THE MINUTES OF THE SEPTEMBER 23, 2008 MEETING
9. RATIFICATION OF PAYROLL

Period 20:	16 Checks \$12,039.55	1,168 Total Deposits: \$1,482,545.74	Total: \$1,494,585.29
		Federal Payroll Taxes:	Total: \$ 219,859.84
10. RATIFICATION OF WARRANT REGISTER SUMMARY

Register No. 676	Sep 22, 2008	Check Nos. 102995-103042	Total: \$ 71,793.49
Register No. 677	Sep 22, 2008	Check Nos. 103043-103051	Total: \$ 18,036.58
Register No. 678	Sep 23, 2008	Check Nos. 103052-103080	Total: \$ 63,509.47
Register No. 679	Sep 23, 2008	Direct Deposit: 4650-4653	Total: \$ 463.13
Register No. 680	Sep 23, 2008	Check Nos. 103081-103097	Total: \$ 1,499.16
Register No. 681	Sep 24, 2008	Void Check in amount of \$2,255,365.00 - Replaced by Wire Transfer	
Register No. 682	Sep 24, 2008	Check Nos. 103099-103123	Total: \$ 66,714.65
Register No. 683	Sep 24, 2008	Check Nos. 103124-103149	Total: \$ 38,177.99
Register No. 684	Sep 25, 2008	Check Nos. 103150-103151	Total: \$ 614.20

Register No. 685	Sep 25, 2008	Direct Deposit: 4654-4654	Total: \$ 475.15
Register No. 686	Sep 25, 2008	Check Nos. 103152-103170	Total: \$ 248,950.58
Register No. 687	Sep 25, 2008	Wire Transfer 10-10	Total: \$2,255,365.00
Register No. 688	Sep 25, 2008	Direct Deposit: 4655-4687	Total: \$ 24,650.60
Register No. 689	Sep 25, 2008	Direct Deposit: 4688-4691	Total: \$ 403,245.27
Register No. 690	Sep 25, 2008	Check Nos. 103171-103182	Total: \$ 338,387.17
Register No. 691	Sep 25, 2008	Check Nos. 103183-103235	Total: \$ 28,457.15
Register No. 692	Sep 25, 2008	Check Nos. 102136-103291	Total: \$ 1,974.00
Register No. 693	Sep 26, 2008	Direct Deposit: 4692-4696	Total: \$ 1,595.54
Register No. 694	Sep 26, 2008	Check Nos. 103292-103303	Total: \$ 8,711.75
Register No. 695	Sep 26, 2008	Direct Deposit: 4697-4698	Total: \$ 143.06
Register No. 396	Sep 26, 2008	Check Nos. 103304-103345	Total: \$ 61,352.24
			Total: \$3,634,006.18

REGULAR

1. APPROVE PERSONNEL ACTIONS ORIGINATING SEPTEMBER 25, 2008
~~- Jane Ivy, Personnel -~~
2. APPROVE AND AUTHORIZE THE COMMISSION CHAIR TO SIGN CHANGE ORDER NO. 32 TO AGREEMENT NO. 2006-237 WITH COMTROL, INC.
- Clyde Naylor, Utah County Engineer/Public Works Director -
3. APPROVE AND AUTHORIZE THE COMMISSIONER CHAIR TO SIGN CHANGE ORDER NO. 33 TO AGREEMENT NO. 2006-237 WITH COMTROL, INC.
- Clyde Naylor, Utah County Engineer/Public Works Director -
4. APPROVE AND AUTHORIZE THE COMMISSION CHAIR TO SIGN AN AGREEMENT WITH UTAH STATE UNIVERSITY EXTENSION SERVICES, TO PROVIDE SUBSTANCE ABUSE PREVENTION FOR AT RISK YOUTH
- Richard Nance, Substance Abuse Director -
5. APPROVE AND AUTHORIZE THE COMMISSION CHAIR TO SIGN AN AGREEMENT WITH THE BOYS AND GIRLS CLUB OF UTAH COUNTY, TO PROVIDE SUBSTANCE ABUSE PREVENTION FOR AT RISK YOUTH
- Richard Nance, Substance Abuse Director -
6. APPROVE AND AUTHORIZE THE COMMISSION CHAIR TO SIGN AN AGREEMENT WITH WASATCH MENTAL HEALTH - VANTAGE POINT, TO ASSIST THE COUNTY IN THE "TOO GOOD FOR DRUGS" PROGRAM FOR AT RISK YOUTH
- Richard Nance, Substance Abuse Director -
7. APPROVE AND AUTHORIZE THE COMMISSION CHAIR TO SIGN AN AGREEMENT WITH BIG BROTHERS BIG SISTERS OF UTAH, TO PROVIDE A MENTORING PROGRAM FOR AT RISK YOUTH
- Richard Nance, Substance Abuse Director -
8. APPROVE AND AUTHORIZE THE COMMISSION CHAIR TO SIGN AN AGREEMENT WITH YOUTHNET, TO PROVIDE SUBSTANCE ABUSE AND CRIME PREVENTION SERVICES FOR AT RISK YOUTH AND ADULTS
- Richard Nance, Substance Abuse Director -
9. APPROVE AND AUTHORIZE THE COMMISSION CHAIR TO SIGN AN AGREEMENT WITH IHC - UVRMC DEPARTMENT OF COMMUNITY HEALTH, TO PROVIDE A MINI-GRANT TO PREVENT TOBACCO USAGE
- Dr. Joseph Miner, Health Department Director -

UTAH COUNTY BOARD OF COMMISSIONERS

AGENDA - September 30, 2008

Page 3

~~ENT 107500:2008 P6 6 of 35~~

ENT 114949:2008 P6 10 of 41

10. ADOPT A RESOLUTION AWARDDING COUNTY PERSONAL PROPERTY AS A GIFT TO RETIRING UTAH COUNTY SHERIFF'S LIEUTENANT, DAVE SNYDER
- Jim Tracy, Utah County Sheriff -
 11. ADOPT A RESOLUTION OF REAPPOINTMENT TO THE UTAH COUNTY HISTORIC PRESERVATION COMMISSION
- Commissioner Gary J. Anderson -
 12. RATIFY THE CHAIR'S SIGNATURE ON THE PARKING LICENSE CONTRACT WITH PLACE BONAVENTURE, L.C. FOR A LICENSE FOR TWENTY (20) PARKING SPACES
- Robert Moore, Deputy Attorney -
 13. RATIFY THE CHAIR'S SIGNATURE ON THE PARKING LICENSE CONTRACT WITH PLACE BONAVENTURE, L.C. FOR A LICENSE FOR EIGHTY-SEVEN PARKING SPACES
- Robert Moore, Deputy Attorney -
 14. ADOPT A RESOLUTION APPROVING VOLUNTEERS WHO WISH TO DONATE THEIR SERVICES TO UTAH COUNTY
- Kent Sundberg, Attorney/Civil Division Chief -
-
15. APPROVE AND ADOPT A RESOLUTION ESTABLISHING THE UTAH VALLEY DISPATCH SPECIAL SERVICES DISTRICT AND PROVIDING FOR OTHER MATTERS RELATING THERETO (*Continued from the August 19 and 26, and September 9 and 23, 2008 meetings*)
- Kent Sundberg, Attorney/Civil Division Chief -
 16. SET A DATE, TIME AND LOCATION FOR A CLOSED MEETING TO DISCUSS THE CHARACTER, PROFESSIONAL COMPETENCE, OR PHYSICAL OR MENTAL HEALTH OF AN INDIVIDUAL OR INDIVIDUALS
- Kent Sundberg, Attorney/Civil Division Chief -
 17. SET A DATE, TIME AND LOCATION FOR A CLOSED MEETING FOR A STRATEGY SESSION TO DISCUSS PENDING OR REASONABLY IMMINENT LITIGATION
- Kent Sundberg, Attorney/Civil Division Chief -
 18. SET A DATE, TIME AND LOCATION FOR A CLOSED MEETING FOR A STRATEGY SESSION TO DISCUSS THE PURCHASE, EXCHANGE, OR LEASE OF REAL PROPERTY
- Kent Sundberg, Attorney/Civil Division Chief -
 19. SET A DATE, TIME AND LOCATION FOR A CLOSED MEETING FOR A STRATEGY SESSION TO DISCUSS THE SALE OF REAL PROPERTY
- Kent Sundberg, Attorney/Civil Division Chief -
 20. SET A DATE, TIME AND LOCATION FOR A CLOSED MEETING TO DISCUSS COMMERCIAL INFORMATION AS DEFINED IN SECTION 59-1-404, U.C.A., 1953 AS AMENDED
- Kent Sundberg, Attorney/Civil Division Chief -

WORK SESSION

NO WORK SESSION ITEMS WERE SUBMITTED

PUBLIC COMMENTS

In compliance with the Americans With Disabilities Act, individuals needing special accommodations (including auxiliary communicative aids and services) during this meeting should notify Linda Strickland at 851-8111 at least one day prior to the meeting.

After the conduct of other business, the following Resolution was introduced in written form by Commissioner Ellertson, was read and discussed, and pursuant to motion made by Commissioner White, and seconded by Commissioner Ellertson, was adopted by the following vote:

Aye: Commissioner Ellertson
 Commissioner White

Nay:

Excused: Commissioner Anderson

The Resolution is as follows:

A RESOLUTION establishing the Utah Valley Dispatch Special Service District, Utah County, Utah, and providing for other related matters.

WHEREAS, pursuant to a resolution (the "Resolution") adopted on June 17, 2008, the Board of County Commissioners of Utah County, Utah (the "Board") gave notice of its intention to initiate proceedings relating to the establishment of a special service district to be known as the "Utah Valley Dispatch Special Service District" (hereinafter referred to as "District"), having the boundaries set out in "Exhibit A" hereto and to provide consolidated 911 and emergency dispatch services as authorized and enumerated in the Special Service District Act, Section 17D-1-101, et. seq., Utah Code Annotated, 1953 as amended (the "Act"), and such other services as may be authorized in the future by amendment to the Act; and

WHEREAS, pursuant to the Resolution the Board ordered that a public hearing be held on July 15, 2008 at 9:00 a.m. at the Utah County Administration Building, 100 East Center Street, Room 1400, Provo, Utah, on the establishment of the District and the provision of the aforementioned services thereby; and

WHEREAS, public notice of said intention and of the time and place of said public hearing was given by the County Clerk/ Auditor through the publication of an appropriate notice in The Daily Herald, a newspaper of general circulation in Utah County, Utah, once a week during three consecutive weeks on June 21, 2008; June 28, 2008; and July 5, 2008, the first of such publications having been not less than twenty-one (21) days nor more than thirty-five (35) days prior to the date of the public hearing; and

WHEREAS, said public hearing has been held pursuant to said notice at the aforesaid time and place, the Board has considered all protests filed and has heard and considered all interested persons desiring to be heard, and the time for filing protests as provided in Section 17D-1-206 of the Act has expired;

NOW, THEREFORE, Be It Resolved by the Board of County Commissioners of Utah County, Utah, as follows:

Section 1. That the Board does hereby find and determine:

- (a) That public notice of the hearing upon the establishment of the District and the furnishing of consolidated 911 and emergency dispatch services as authorized and enumerated in the Act thereby, and further including such other services as may be authorized in the future by amendment to the Act, was given by the Clerk of the Board by publication of an appropriate notice in The Daily Herald, a newspaper of general circulation in Utah County, Utah, once a week for three consecutive weeks prior to July 15, 2008, to-wit, on June 21, 2008; June 28, 2008; and July 5, 2008, the first of said publications having been made not more than thirty-five (35) days nor less than twenty-one (21) days prior to the date of such hearing.
- (b) That no written protests were filed against the establishment of the District, pursuant to the provisions of Section 17D-1-206 of the Act.

- (c) That a public hearing on the establishment of the District and the furnishing of consolidated 911 and emergency dispatch services as authorized and enumerated in the Act thereby, and further including such other services as may be authorized in the future by amendment to the Act, was held and conducted by the Board as required by law and the Resolution giving notice thereof, on July 15, 2008 at 9:00 a.m. at the Utah County Administration Building, 100 East Center Street, Room 1400, in Provo, Utah, at which public hearing the Board provided the opportunity to give full consideration to any protests which may have been filed and to hear and consider all interested persons desiring to be heard.
- (d) That all municipalities with area included within the District have adopted a resolution or ordinance consenting to inclusion within the District.
- (e) That after careful consideration of all factors involved and of all objections and protests, it has been and is hereby found, determined and declared that all property included within the boundaries of the District, as such boundaries are set out in this Resolution, will be benefitted by the consolidated 911 and emergency dispatch services to be furnished by the proposed District, and any other services as may be authorized in the future by amendment to the Act, and that all proceedings taken in establishing the District have been in compliance with law.

Section 2. That there is hereby established a special service district within Utah County, Utah, to be known as the "Utah Valley Dispatch Special Service District." The boundaries of the District are more particularly described in **Exhibit A** hereto, which is hereby attached, and incorporated herein and made a part hereof.

Section 3. That the District is created for the purpose of providing consolidated 911 and emergency dispatch services as authorized and enumerated in the Act, and further including such other services as may be authorized in the future by amendment to the Act.

Section 4. That the Board hereby finds and determines that not more than thirty-three percent (33%) of the registered voters of the territory proposed to be included within the District, nor the owners of more than thirty-three percent (33%) of the taxable value of the taxable property included in the District, have filed written protests with the Board against (1) the establishment of the District, or (2) a specified type or types of services within the District.

Section 5. That the District shall be a separate body corporate and politic and a quasi-municipal public corporation distinct from Utah County, Utah, and all municipalities in which the District is located. Notwithstanding, the Board as it exists from time to time, shall control and have supervisory authority over all activities of the District, except that the Board may by resolution delegate to an administrative control board established under Section 17D-1-301, of the Act, the right, power, or authority to exercise any of the rights, powers, or authority that the Board possesses with respect to the governance of a special service district. The District shall have all rights, powers, and authority granted to special service districts under the Act.

Section 6. That pursuant to the requirements of Section 17D-1-209, of the Act, the Board will file a notice with the Lieutenant Governor concerning the creation of the District within thirty (30) days of the adoption of this Resolution.

Section 7. That all acts and resolutions in conflict with this Resolution or any part thereof are hereby repealed.

Section 8. That this Resolution shall take immediate effect upon its adoption and approval.

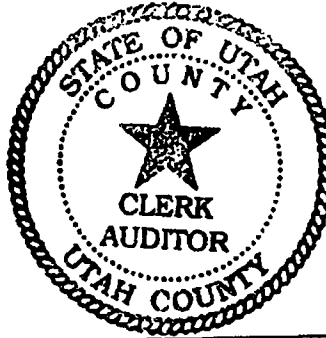
ADOPTED AND APPROVED this 30th day of September, 2008.

BOARD OF COUNTY COMMISSIONERS
UTAH COUNTY, UTAH


Larry A. Ellertson, Vice-Chair

ATTEST:
Bryan E. Thompson
Utah County Clerk/Auditor

By: 
Deputy County Clerk/Auditor



[SEAL]

(Other business not pertinent to the above appears in the minutes of the meeting.)

Pursuant to motion duly made and carried, the meeting was adjourned.

BOARD OF COUNTY COMMISSIONERS
UTAH COUNTY, UTAH


Larry A. Ellertson, Vice-Chair

ATTEST:
Bryan E. Thompson
Utah County Clerk/Auditor

By: 
Deputy County Clerk/Auditor

[SEAL]



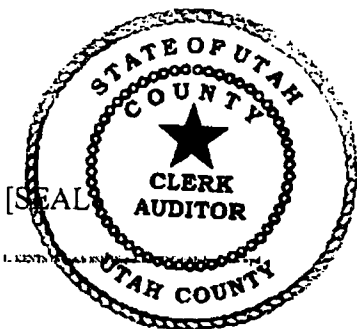
STATE OF UTAH)
)
COUNTY OF UTAH)

I, the undersigned, do hereby certify that I am the duly qualified and acting County Clerk/Auditor of Utah County, Utah.

I further certify that the foregoing constitutes a true and correct copy of the minutes of a regular meeting of the Board of County Commissioners of Utah County, Utah, held at the regular meeting place of the Board in the Utah County Administration Building in Provo, Utah, at 9:00 a.m. on September 30, 2008, as recorded in the regular official book of minutes of the proceedings of the Board of County Commissioners of Utah County, Utah, kept in my office, that said proceedings were

duly had and taken as therein shown, that all members were given due, legal and timely notice of said meeting, that the meeting therein shown was in all respects called, held and conducted in accordance with law, and that the persons therein named were present at said meeting, as therein shown.

IN WITNESS WHEREOF, I have hereunto set my hand and affixed the official seal of Utah County, Utah, this 30th day of September, 2008.



Bryan E. Thompson

Bryan E. Thompson, County Clerk/Auditor
Utah County, Utah

EXHIBIT A**DISPATCH SPECIAL SERVICE DISTRICT**

Comprised of the Utah County Boundary less the boundaries of the incorporated cities of Draper, Lindon, Orem, Pleasant Grove, Provo, Mapleton, and Springville, as follows:

UTAH COUNTY
BOUNDARY DESCRIPTION

Utah County Resolution No. 2005-58
Recorded October 27, 2005 as Entry No. 122772

The geographic boundaries of Utah County are described as follows:

Beginning at the point of intersections of the Wasatch Range with the summit of the range crossing from the Wasatch to the Oquirrh Mountains, said point being common to the Salt Lake, Utah and Wasatch County boundary lines; thence southwesterly along said cross range summit and county boundary line as defined by Utah State Code 17-50-229, and as shown on the 1943 Boundary Line plat between Salt Lake and Utah Counties, said plat being on file with the Utah County Surveyor's Office, to a point on the extension of the northerly line of an existing access road to Hidden Peak, which point is described by the Utah County Surveyor in a 2003 survey at Hidden Peak, amending the Salt Lake and Utah County line, which is also defined as being located South 62°35'49" West, 3574.55 feet from the North Quarter Corner of Section 17, Township 3 South, Range 3 East, Salt Lake Base and Meridian; thence departing from said cross range summit and county boundary line as defined by State Code, South 30°00'00" West, 250.86 feet more or less along the northerly line of said access road and its extension to a point on the extension of a line 20 feet northeasterly and parallel with the centerline of the Mineral Basin Express Shi Lift; thence North 67°51'10" West, 84.00 feet, more or less, along a line parallel with said ski lift centerline to a point located on said cross range summit and county boundary line as defined in State Code, which point is South 61°32'05" West, 3841.05 feet from said North Quarter Corner of Section 17; thence southwesterly along said cross range summit and county boundary line as shown on the 1943 Boundary Line Plat to a monument with NAD '83 Harn Coordinates of North = 2/239,293.445 meters and East = 473,607.614 meters located on the northeasterly monumented end of the 1943 Boundary Line Plat described above; thence the following courses between monuments located along the Salt Lake and Utah County line: North 77°05'24" West, 1426.57 feet; South 59°45'32" West, 1906.52 feet; South 38°44'00" West, 726.01 feet; South 86°52'40" West, 1554.18 feet; thence continuing along the monumented 1943 Boundary Line, South 36°53'46" West, 897.82 feet to a point on the existing Salt Lake County and Utah County Line, said point being North 34°58'55" east, 1619.55 feet from the Salt Lake County brass cap marking the Southeast Corner of Section 9, Township 4 South, Range 1 East, Salt Lake Base and Meridian (Basis of Bearings being South 89°52'50" West, 2611.26 feet from said Southeast Corner of Section 9 to the Salt Lake County brass cap marking the South Quarter Corner of said Section 9) and running thence along the common boundary line as described in a Boundary Line Agreement and Quit Claim Deed recorded in Book 8936 at Page 5828 of the Salt Lake County records North 89°53'02" West, 548.66 feet to the centerline of the proposed Haddington Road as described on the proposed Stoneleigh Heights at SunCrest Phase No 2A (A Planned Unit Development); thence along said proposed centerline of Haddington Road the following three courses: South 00°08'06" West, 180.74 feet, Southerly 62.09 feet along a 5,000.00 foot radius curve to the left through a central angle of 00°42'41" and a long chord of South 00°13'15" East, 62.09 feet, and South 00°34'35" East, 96.94 feet to the centerline of SunCrest Drive as described on Oak Vista No. 2 at SunCrest recorded in Book 99-12P at Page 343 of said records; thence along said centerline of SunCrest Drive South 89°25'25" West, 410.00 feet to the intersection of said SunCrest Drive with Traverse Ridge Road (Maple View Drive by plat) as described on said Oak Vista No. 2 at SunCrest; thence along the centerline of said Traverse Ridge Road the following eight courses: South 04°25'25" West, 129.31 feet, Southerly 70.57 feet along a 200.00 foot radius curve to the right through a central angle of 20°12'57" and a long chord of South 14°31'54" West, 70.20 feet, South 24°38'22" West, 40.18 feet, Southerly 193.25 feet along a 180.00 foot radius curve to the left through a central angle of 61°30'47" and a long chord of South 06°07'02" East, 184.10 feet, Southerly 702.67 feet along a 550.00 foot radius reverse curve to the right through a central angle of 73°12'02" and a long chord of South 00°16'24" East, 655.85 feet, Southwesterly 430.13 feet along a 1,475.00 foot radius compound curve to the right through a central angle of 16°42'30" and a long chord of South 44°40'52" West, 428.61 feet, Southwesterly 187.74 feet along a 300.00 foot radius reverse curve to the left through a central angle of 35°51'19" and a long chord of South 35°06'27" West,

184.69 feet, and Southerly 53.85 feet along a 1,573.88 foot radius compound curve to the left through a central angle of $01^{\circ}57'37''$ and a long chord of South $16^{\circ}11'59''$ West, 53.85 feet to the centerline of Traverse Ridge Road as described on Oak Vista No. 4 at SunCrest recorded in Book 2000P at Page 325 of the Salt Lake County records and as Entry No 92120:2000 and Map # 8835 of the Utah County records; thence along said centerline of Traverse Ridge Road the following four courses: continuing Southerly 253.16 feet along said 1,573.88 foot radius curve to the left through a central angle of $09^{\circ}12'58''$ and a long chord of South $10^{\circ}36'42''$ West, 252.89 feet, Southerly 178.49 feet along a 300.00 foot radius compound curve to the left through a central angle of $34^{\circ}05'21''$ and a long chord of South $11^{\circ}02'28''$ East, 175.87 feet, Southerly 175.10 feet along a 300.00 foot radius reverse curve to the right through a central angle of $33^{\circ}26'30''$ and a long chord of South $11^{\circ}21'53''$ East, 172.63 feet, and Southerly 328.37 feet along a 1,190.16 foot radius reverse curve to the left through a central angle of $15^{\circ}48'29''$ and a long chord of South $02^{\circ}32'53''$ East, 327.33 feet to the intersection of said Traverse Ridge Road with Oak Summit Drive as described on said Oak Vista No. 4 at SunCrest; thence along centerline of said Oak Summit Drive the following two courses: South $79^{\circ}24'56''$ West, 120.00 feet and Westerly 207.30 feet along a 997.00 foot radius curve to the right through a central angle of $11^{\circ}54'47''$ and a long chord of South $85^{\circ}22'19''$ West, 206.92 feet to the intersection of said Oak Summit Drive with Long Branch Drive as described on said Oak Vista No. 4 at SunCrest; thence along the centerline of said Long Branch Drive the following eleven courses: Southwesterly 1,073.89 feet along a 538.50 foot radius non-tangent curve to the right through a central angle of $114^{\circ}15'39''$ and a long chord of South $55^{\circ}07'39''$ West, 904.58 feet, North $67^{\circ}44'32''$ West, 203.29 feet, Northwesterly 184.40 feet along a 429.60 foot radius curve (435.00 foot radius curve by plat) to the right through a central angle of $24^{\circ}35'38''$ and a long chord of North $55^{\circ}26'43''$ West, 182.99 feet, Northwesterly 161.03 feet along a 435.00 foot radius reverse curve to the left through a central angle of $21^{\circ}12'36''$ and a long chord of North $53^{\circ}45'12''$ West, 160.11 feet, North $64^{\circ}21'29''$ West, 177.12 feet, Northwesterly 242.21 feet along a 394.00 foot radius curve to the right through a central angle of $35^{\circ}13'22''$ and a long chord of North $46^{\circ}44'48''$ West, 238.42 feet, North $29^{\circ}08'07''$ West, 151.89 feet, Northerly 173.12 feet along a 208.00 foot radius curve to the right through a central angle of $47^{\circ}41'16''$ and a long chord of North $05^{\circ}17'29''$ West, 168.17 feet, Northerly 161.40 feet along a 153.00 foot radius reverse curve to the left through a central angle of $60^{\circ}26'24''$ and a long chord of North $11^{\circ}40'03''$ West, 154.02 feet, Northwesterly 114.25 feet along a 247.00 foot radius reverse curve to the right through a central angle of $25^{\circ}28'20''$ and a long chord of North $29^{\circ}09'05''$ West, 113.32 feet, and North $16^{\circ}24'55''$ West, 143.67 feet to the intersection of said Long Branch Drive with Deer Ridge Drive as describe on said Oak Vista No. 4 as SunCrest; thence along said centerline of Deer Ridge Drive Westerly 122.35 feet along a 773.00 foot radius non-tangent curve to the right through a central angle of $09^{\circ}04'08''$ and a long chord of South $77^{\circ}35'37''$ West, 122.22 feet; thence along the centerline of said Deer Ridge Drive as described on Deer Ridge Drive at SunCrest Right-of-Way Dedication Plat as recorded in Book 2001P at Page 46 of the Salt Lake County records the following twenty five courses continuing Westerly 209.97 feet along said 773.00 foot radius curve to the right through a central angle of $15^{\circ}33'47''$ and a long chord of South $89^{\circ}54'35''$ West, 209.32 feet, North $82^{\circ}18'32''$ West, 133.62 feet, Westerly 452.23 feet along a 500.00 foot radius curve to the left through a central angle of $51^{\circ}49'16''$ and a long chord of South $71^{\circ}46'50''$ West, 436.97 feet, South $45^{\circ}52'11''$ West, 447.88 feet, Southwesterly 198.37 feet along a 280.00 foot radius curve to the right through a central angle of $40^{\circ}35'29''$ and a long chord of South $66^{\circ}09'56''$ West, 194.25 feet, South $86^{\circ}27'41''$ West, 240.77 feet, Southwesterly 345.64 feet along a 200.00 foot radius curve to the left through a central angle of $99^{\circ}01'11''$ and a long chord of South $36^{\circ}57'05''$ West, 304.21 feet, South $12^{\circ}33'30''$ East, 93.53 feet, Southwesterly 275.62 feet along a 200.00 foot radius curve to the right through a central angle of $78^{\circ}57'34''$ and a long chord of South $26^{\circ}55'17''$ West, 254.32 feet, South $66^{\circ}24'04''$ West, 67.75 feet, Southwesterly 304.58 feet along a 200.00 foot radius curve to the left through a central angle of $87^{\circ}15'16''$ and a long chord of South $22^{\circ}46'26''$ West 275.99 feet, South $20^{\circ}51'12''$ East 175.21 feet, Southwesterly 619.76 feet along a 275.00 foot radius curve to the right through a central angle of $129^{\circ}07'36''$ and a long chord of South $43^{\circ}42'36''$ West, 496.68 feet, North $71^{\circ}43'36''$ West, 78.13 feet, Westerly 142.49 feet along a 200.00 foot radius curve to the left through a central angle of $40^{\circ}49'09''$ and a long chord of South $87^{\circ}51'50''$ West, 139.49 feet, South $67^{\circ}27'16''$ West, 41.46 feet, Westerly 370.35 feet along a 600.00 foot radius curve to the right through a central angle of $35^{\circ}21'57''$ and a long chord of South $85^{\circ}08'15''$ West, 364.50 feet, North $77^{\circ}10'47''$ West, 271.15 feet, Southwesterly 452.32 feet along a 250.00 foot radius curve to the left through a central angle of $103^{\circ}39'48''$ and a long chord of South $50^{\circ}59'19''$ West, 393.10 feet, South $00^{\circ}50'35''$ East, 87.56 feet, Southerly 81.56 feet along a 200.00 foot radius curve to the right through a central angle of $23^{\circ}21'56''$ and a long chord of South $10^{\circ}50'23''$ West, 81.00 feet, South $22^{\circ}31'21''$ West, 275.70 feet, Southwesterly 215.75 feet along a 200.00 foot radius curve to the right through a central angle of $61^{\circ}48'29''$ and a long chord of South $53^{\circ}25'36''$ West, 205.44 feet, South $84^{\circ}19'51''$ West, 64.85 feet, and Westerly 79.78 feet along a 250.00 foot radius curve to the left through a central angle of $18^{\circ}17'06''$ and a long chord of South $75^{\circ}11'18''$ West, 79.44 feet; thence leaving said centerline North $65^{\circ}17'43''$ West, 89.49 feet; thence North $56^{\circ}17'24''$ West, 621.79 feet; thence South $60^{\circ}48'33''$ West,

790.45 feet to a monument on the said existing Salt Lake and Utah County Line, with NAD '83 Harn Coordinates of North = 2,237,195.886 meters and East = 469,224.891 meters; said point of terminus being South 65°45'11" West, 8634.43 feet from said Salt Lake County brass cap marking the Southeast Corner of Section 9; thence westerly along said cross range summit and county boundary line as shown on said 1943 Boundary Line plat to an angle corner that is part of the Crittenden Military Reservation Boundary survey, performed in 1887 by R. Gorkinski, said angle corner lies 28.11 chains northeasterly from the 6 mile marker of said survey and is on the summit of a peak known as Cedar Point; thence westerly along said cross range summit and Salt Lake and Utah County boundary lines as defined by state code and shown on said 1943 Boundary Lien Plat to a point common with the Salt Lake, Utah, and Tooele County boundary lines at the summit of the highest of the Butterfield Peaks in Section 15, Township 4 South, Range 3 West, Salt Lake Base and Meridian; said point is at the intersection of said cross range with said Oquirrh Range, and is more specifically located as being southeasterly 7.43 chains from the 22 mile marker of said Crittenden boundary survey; thence southerly along summit between Cedar and Rush Valleys to the summit of the range between the Tintic Valley and the Goshen and Cedar Valleys; thence southerly along said last mentioned summit to , and thence easterly along , the summit between Goshen and Juab Valleys to, and thence northeasterly along, the summit of the high ground and range of mountains between Utah and Juab Valleys to the summit of the Nebo Range; thence southeasterly along said summit to the line between Townships 11 and 12 South; thence east to the line between Ranges 9 and 10 East; thence north to the township line between Townships 10 and 11 South; thence west to a point due south of the point where the wagon road from Spanish Fork to White River as it existed in February 1880, crossed the summit of the divide south of the Strawberry Valley; thence north to said last mentioned point of crossing; thence northwesterly along the summit of the range passing around the headwater of Spanish Fork and Hobbler Creeks to a point south of the point on the Provo River one-fourth of a mile upstream from the middle of the north of the north fork of said river; thence north to the summit of the range passing around the headwaters of Battle and American Fork Creeks; thence following said summit to the point of beginning.

Less the following described boundaries of Draper, Lindon, Orem, Pleasant Grove, Provo, Mapleton, and Springville:

DRAPER CITY, UTAH (UTAH COUNTY PORTION)
BOUNDARY DESCRIPTION

Beginning at a point located at the intersection of the Draper City Boundary and the Boundary between Salt Lake and Utah Counties, said point being 2822.98 feet South 89°37'16" West from the East Quarter Corner of Section 18, Township 4 South, Range 1 East, Salt Lake Base and Meridian; thence along the Traverse Mountain Annexation recorded March 17 of 1988 the following courses: North 89°37'16" East, 2822.98 feet to the East Quarter Corner of said Section 18; South 00°31'29" West, 28.31 feet; South 00°28'34" West, 2603.28 feet to the Southeast Corner of said Section 18; South 89°45'47" East, 2621.14 feet; South 89°45'55" East, 841.76 feet; South 89°46'25" East, 1777.95 feet to the Southeast Corner of Section 17; South 89°27'44" East, 1098.19 feet to the Northeast Corner of Section 20; South 00°13'34" West, 2694.81 feet to the East Quarter Corner of said Section 20; South 00°13'34" West, 2544.00 feet; North 89°52'03" West, 1041.93 feet; West 3622.14 feet; South 89°55'16" West, 45.50 feet; South 09°47'45" East, 26.45 feet; South 09°15'36" East, 236.14 feet; South 32°15'11" East, 374.77 feet; South 33°45'03" East, 504.48 feet; South 33°45'06" East, 15.46 feet; South 25°00'06" East, 451.91 feet; South 70°36'26" East, 46.12 feet; South 64°12'07" East, 1093.90 feet; South 72°05'00" East, 316.74 feet; North 00°19'35" West, 591.89 feet; South 89°51'58" East, 2652.27 feet; South 00°00'15" East, 5.06 feet; South 00°04'31" East, 568.75 feet; South 00°04'30" East, 759.07 feet to the West Quarter Corner of Section 28; South 89°49'58" East, 2657.27 feet to the Center of said Section 28; North 00°00'40" East, 660.44 feet; North 00°00'22" East, 11.56 feet; North 76°00'10" East, 1247.77 feet; North 00°01'45" West, 1696.70 feet; South 89°21'05" East, 1446.48 feet to the 1133.07 feet; North 77°14'47" East, 954.94 feet; North 38 24815'34" East, 631.04 feet; North 53°14'46" East, 1309.90 feet; North 62°30'02" East, 305.10 feet; North 62°15'00" East, 989.29 feet; North 66°30'05" East, 1923.94 feet; North 03°35'41" East, 1076.69 feet; East 579.88 feet; North 758.75 feet; East 217.50 feet; North 29°49'28" East, 235.00 feet; along a curve to the right with chord bearing North 59°23'04" East, 123.46 feet; South 65°11'34" East, 40.07 feet; South 43°23'38" East, 146.65 feet; along a curve to the left with chord bearing North 84°00'17" East, 12.57 feet; North 69°40'16" East, 429.35 feet; thence along the Draper / Highland Boundary Adjustment the following courses: North 12°46'00" West, 1560.14 feet; South 89°48'21" East, 1398.93 feet; South 00°13'46" West, 1322.50 feet; thence again along the said Traverse Mountain Annexation the following courses: North 89°46'44" East, 962.07 feet; North 89°46'43" East, 364.65 feet; North 89°46'36" East, 272.75

feet; North 00°03'25" West, 2619.33 feet; North 89°56'30" East, 2392.64 feet; North 01°04'14" West, 13.38 feet; North 01°31'31" West, 4.69 feet; North 00°23'21" East, 18.38 feet; North 00°17'15" East, 1297.46 feet; North 00°15'14" West, 1324.02 feet; North 89°56'44" East, 1315.00 feet; North 00°01'19" East, 1317.45 feet to the North Quarter Corner of Section 13, North 00°09'12" East, 1311.39 feet; North 89°29'48" West, 7.12 feet; North 00°39'00" East, 11.00 feet; North 89°45'32" West, 2630.41 feet; North 00°22'57" East, 1311.73 feet to the East Quarter Corner of Section 11; North 2648.83 feet to the Northeast Corner of said Section 11; South 89°05'56" West, 2677.72 feet to the intersection with the County Boundary between Salt Lake and Utah Counties.

LINDON CITY, UTAH
BOUNDARY DESCRIPTION

Beginning at the southeast corner of Section 35, Township 5 South, Range 2 East, Salt Lake Base and Meridian; thence along the Allen Addition to Lindon City recorded October 8 of 1953 the following two courses: West along the south line of said Section 35 to the South Quarter Corner; continuing West along the south line of said Section 35 to the South 1/16 Corner of the Southwest Quarter of Section 35, Township 5 South, Range 2 East; thence along the Lindon Corporate Limits recorded April 23 of 1924, West along the south line of said Section 35, 34 and 33 to the South 1/16 Corner of the Southeast Quarter of said Section 33, Township 5 South, Range 2 East; thence along the Certain Territory Annexation recorded May 7 of 1925 the following six courses: South 90 rods to the Center of the Northeast Quarter of Section 4; West 34 rods to the West side of the Salt Lake and Utah Railroad Right-of-Way; Southeasterly along said right-of-way 82 rods to the line extending East and West through the Center of Section 5; West to the South 1/16 Corner of the Northeast Quarter of said Section 5; North to the Center of the Northeast Quarter of said Section 5; West to the West 1/16 Corner of the Northeast Quarter of said Section 5; thence along the Maxfield Addition recorded September 26 of 1978 the following three courses: South 89°42'17" West, 660.04 feet; North 00°56'01" West, 421.00 feet; South 89°48'20" West, 1680.67 feet; thence along the West Side Annexation recorded January 16 of 1979 the following five courses: South 89°48'20" West, 307.51 feet; North 00°45'11" West, 891.08 feet; South 89°18'28" West, 1834.41 feet; South 00°26'15" West, 119.04 feet; South 64°43'00" West, 1030.80 feet; thence along the Southwest Annexation recorded April 7 of 1981 the following three courses: Southeasterly along the east fence line of D & RGWR to the South side of 5200 North Street; thence West 3630.00 feet more or less; thence North 00°32'11" West, 4080 feet more or less; thence again along the said West Side Annexation the following two courses: North 00°32'11" East, 1250.00 feet; north 37°00'00" West, 702.42 feet; thence along the Steve Miner Annexation recorded October 18 of 2005 the following five courses: West 37.854 feet; North 37°06'23" West, 2203.309 feet; South 89°36'15" West, 541.699 feet; South 00°27'37" West, 21.020 feet; East 825.586 feet; thence along the Northwest Annexation recorded April 7 of 1981 the following four courses: North 2206.32 feet more or less; South 49°52'10" East, 5256.31 feet more or less; North 2581.81 feet more or less; North 89°32'26" East, 4800.00 feet more or less; thence again along the said West Side Annexation North 89°32'26" East, 665.00 feet; thence along the Pleasant Grove / Lindon Common Boundary Adjustment No. 1 recorded February 28 of 2007 the following nine courses: North 89°32'26" East, 8.15 feet; North 243.11 feet; North 15.77 feet; South 89°59'24" East, 2555.15 feet; South 89°42'03" East, 465.05 feet; South 89°43'34" East, 220.56 feet; South 89°43'35" East, 172.37 feet; South 89°46'14" East, 397.99 feet; South 0.95 feet; thence along the Lindon / Pleasant Grove Common Boundary Annexation recorded March 10 of 1995 the following thirty-two courses: South 89°46'14" East, 3936.16 feet more or less; South 42°16'00" East, 125.75 feet; South 42°16'00" East, 26.18 feet; North 47°44'00" East, 15.57 feet; 145.02 feet along a 234.00 foot radius curve to the right (chord bears: North 67°40'34" East, 142.71 feet); North 85°25'46" East, 35.52 feet; South 42°12'12" East, 63.46 feet; South 42°12'12" East, 352.64 feet; North 70°55'48" East, 55.00 feet; South 19°04'12" East, 30.00 feet; North 70°55'48" East, 189.66 feet; North 02°22'00" West, 235.49 feet; North 02°22'00" West, 70.71 feet; North 89°30'29" East, 838.19 feet; South 89°47'12" East, 149.72 feet; 156.89 feet along a 967.00 foot radius curve to the right (chord bears: South 85°50'38" East, 156.72 feet); South 81°11'46" East, 111.89 feet; 163.58 feet along a 1033.00 foot radius curve to the right (chord bears: South 85°43'57" East, 163.41 feet); North 89°43'51" East, 459.86 feet; 89.82 feet along a 467.00 foot radius curve to the right (chord bears: South 84°45'32" East, 89.68 feet); South 79°14'56" East, 75.24 feet; 47.65 feet along a 533.00 foot radius curve to the left (chord bears: North 81°48'35" East, 457.63 feet); North 89°44'04" East, 2390.76 feet; 124.90 feet along a 1033.00 foot radius curve to the left (chord bears: North 86°16'15" East, 124.82 feet); North 82°48'25" East, 278.13 feet; 130.28 feet along a 967.00 foot radius curve to the right (chord bears: North 86°39'59" East, 130.18 feet); South 89°28'26" East, 392.98 feet; South 00°30'00" West, 96.56 feet; North 89°30'00" East, 770.00 feet; North 00°30'00" East, 96.29 feet; North 00°30'00" East, 49.50 feet; South 89°47'20" East, 2488.99 feet; thence again along the said Lindon Corporate Limits East 142.38 feet more or less; thence along the East Side Annexation recorded April 7 of 1981

the following three courses: South 89°46'14" East, 10692.09 feet; South 00°08'22" West, 6605.81 feet; North 89°53'07" West, 5330.00 feet to the point of beginning.

CITY OF OREM, UTAH
BOUNDARY DESCRIPTION

Recorded Boundary Line Description as of February 15 of 2007
City of Orem Resolution No. R-07-0009

Commencing at the West Quarter Corner of Section 4, Township 6 South, Range 2 East, Salt Lake Base and Meridian, with the assigned State Plane Coordinates (NAD 27) of N = 726007.79 feet and East = 1934883.08 feet supplied by the Utah County Surveyors Office, thence the following bearings and grid distances; thence South 89°39'16" West, 1018.58 feet along the Quarter Section Line; thence South 08°05'53" East, 8043.14 feet to the Northeast Corner of Section 17; thence South 00°03'08" East, 71.98 feet; thence South 24°00'00" West, 134.92 feet; thence South 00°02'57" East, 4538.07 feet; thence North 30°42'07" West, 1500.67 feet; thence South 89°34'05" West, 1875.09 feet; thence South 01°00'06" East, 683.51 feet; North 89°19'05" East, 118.76 feet; thence South 44°50'00" East, 698.29 feet; thence North 89°26'28" East, 294.26 feet; thence South 00°34'02" East, 724.89 feet; thence North 89°37'10" East, 1740.09 feet to a point that is West 32.77 feet and South 25.24 feet from the Northeast Corner of Section 20; thence South 00°30'05" East, 1314.38 feet; thence North 90°00'00" West, 588.79 feet; thence South 00°00'00" West, 728.18 feet; thence South 89°26'30" East, 454.38 feet; thence North 02°30'00" East, 199.39 feet; thence South 89°46'00" East, 165.38 feet thence North 12°10'16" West, 9.79 feet; thence South 19°11'54" East, 279.95 feet; thence South 27°33'13" East, 509.34 feet; ~~thence North 87°28'10" West, 1656.71 feet; thence North 00°25'06" East, 1120.72 feet; thence North 19°28'07" West,~~ 37.88 feet; thence South 90°00'00" East, 50.64 feet; thence North 01°08'53" West, 165.13 feet; thence North 00°33'38" West, 27.93 feet; thence South 90°00'00" East, 54.02 feet; thence North 00°00'00" East, 66.00 feet; thence North 90°00'00" West, 7.96 feet; thence along a curve to the right, the radius is 5.00 feet, the arc length is 7.81 feet, the chord bearing is North 45°17'19" West, the chord length is 7.04 feet; thence North 00°34'38" West, 482.95 feet; thence South 89°47'39" West, 199.09 feet; thence North 69°39'51" West, 103.48 feet; thence North 89°49'29" West, 52.05 feet; thence South 65°08'41" West, 82.35 feet; thence South 39°36'39" West, 78.16 feet; thence South 02°02'47" East, 34.87 feet; thence South 89°56'33" West, 230.43 feet; thence North 13°38'21" West, 44.00 feet; thence North 28°06'27" West, 89.73 feet; thence North 39°12'38" West, 81.21 feet; thence North 53°39'30" West, 83.42 feet; thence North 65°03'19" West, 83.88 feet; thence North 90°00'00" West, 157.88 feet; thence South 00°34'10" East, 121.32 feet; thence South 89°25'50" West, 70.00 feet; thence North 00°34'10" West, 122.01 feet; thence North 90°00'00" West, 175.22 feet; thence North 65°08'59" West, 26.00 feet; thence North 00°48'25" West, 364.46 feet; thence South 89°34'05" West, 0.22 feet to a point that is South 33.01 feet from the North Quarter Corner of Section 20; thence South 89°34'05" West, 2.80 feet; thence along a curve to the right, the radius is 783.00 feet, the arc length is 193.79 feet, the chord bearing is North 83°20'19" West, the chord length is 193.38 feet; thence North 76°15'22" West, 195.00 feet; thence along a curve to the left, the radius is 717.00 feet, the arc length is 224.88 feet, the chord bearing is North 85°14'29" West, the chord length is 223.96 feet; thence South 04°13'36" East, 15.69 feet; thence South 73°37'14" West, 23.17 feet; thence South 51°09'23" West, 70.17 feet; thence South 26°36'04" West, 70.17 feet; thence South 00°55'28" West, 83.29 feet; thence South 26°24'39" East, 101.68 feet; thence South 42°38'46" West, 172.72 feet; thence South 06°08'24" East, 180.86 feet; thence South 68°06'24" West, 60.01 feet; thence South 20°39'59" East, 110.00 feet; thence South 29°46'33" West, 57.13 feet; thence South 11°16'39" East, 112.01 feet; thence South 06°09'04" East, 109.03 feet; thence South 07°04'54" West, 126.17 feet; thence South 31°22'13" West, 115.86 feet; thence South 54°28'31" West, 113.48 feet; thence South 63°10'40" West, 96.41 feet; thence South 54°18'27" West, 79.76 feet; thence South 38°17'22" West, 80.07 feet; thence North 51°16'41" West, 112.87 feet; thence along a curve to the left, the radius is 240.00 feet, the arc length is 159.16 feet, the chord bearing is South 13°22'28" West, the chord length is 156.26 feet; thence South 01°56'34" East, 68.30 feet; thence North 76°56'57" East, 299.51 feet; thence South 10°18'41" East, 79.94 feet; thence South 18°07'58" East, 277.14 feet; thence South 15°35'00" East, 115.95 feet; thence South 76°17'44" West, 200.11 feet; thence South 37°32'01" West, 81.72 feet; thence South 65°19'12" West, 214.55 feet; thence South 46°57'36" West, 80.56 feet; thence South 36°58'39" West, 103.68 feet; thence South 15°23'03" West, 66.74 feet; thence South 01°04'02" East, 45.67 feet; thence South 35°46'29" East, 197.33 feet; thence South 22°53'15" West, 75.06 feet; thence South 42°08'44" West, 166.05 feet; thence South 52°09'59" West, 15.91 feet; thence North 66°55'14" West, 732.45 feet; thence North 63°51'21" West, 92.34 feet; thence North 75°25'06" West, 83.01 feet; thence North 84°11'47" West, 87.02 feet; thence South 84°27'44" West, 91.15 feet; thence South 74°23'34" West, 196.24 feet; thence South 47°47'44" West, 59.64 feet;

thence South 44°27'00" East, 759.17 feet; thence South 54°53'01" West, 38.13 feet; thence South 42°23'53" East, 1304.54 feet; thence North 89°03'21" East, 222.62 feet; thence South 50°17'09" East, 613.79 feet; thence South 60°02'39" East, 64.98 feet; thence South 69°10'39" East, 655.23 feet; thence South 89°07'42" West, 138.30 feet; thence South 35°50'46" East, 41.35 feet; thence South 42°52'26" East, 48.94 feet; thence South 47°59'08" East, 43.54 feet; thence South 52°13'19" East, 33.94 feet; thence South 61°29'16" East, 36.28 feet; thence South 13°32'06" East, 51.31 feet; thence South 10°03'10" West, 37.38 feet; thence South 23°57'48" West, 53.07 feet; thence South 57°05'25" West, 36.40 feet; thence South 10°11'25" West, 17.70 feet; thence North 89°30'11" East, 460.75 feet to a point that is North 311.12 feet and West 4881.74 feet from the North Quarter Corner of Section 28; thence South 00°11'45" West, 69.64 feet; thence South 32°30'00" East, 317.56 feet; thence South 37°30'00" East, 488.26 feet; thence South 40°00'00" East, 481.66 feet; thence South 38°15'00" East, 291.28 feet; thence South 89°51'21" East, 322.95 feet; thence South 00°00'00" West, 349.14 feet; thence South 89°52'45" East, 3416.23 feet; thence North 63°14'55" East, 50.79 feet; thence South 32°25'24" East, 669.23 feet; thence North 58°11'09" East, 66.10 feet; thence North 34°22'54" West, 29.06 feet; thence South 87°55'36" East, 1805.61 feet; thence South 33°10'30" East, 855.11 feet; thence North 89°36'01" East, 207.84 feet to the East Quarter Corner of Section 28; thence South 89°51'57" East, 553.74 feet; thence South 32°47'14" East, 1201.17 feet; thence South 88°52'04" East, 132.64 feet; thence South 86°45'21" East, 86.36 feet; thence South 00°11'04" West, 112.97 feet; thence North 89°00'05" West, 132.52 feet; thence South 61°48'58" West, 349.60 feet; thence South 35°25'16" East, 148.42 feet; thence South 90°00'00" East, 27.57 feet; thence South 36°33'46" East, 371.44 feet; thence South 39°51'52" East, 251.98 feet; thence South 41°13'18" East, 698.49 feet; thence South 41°44'41" East, 370.26 feet; thence South 89°27'45" East, 329.45 feet; thence South 40°49'30" East, 376.26 feet thence North 21°32'02" West, 81.81 feet; thence South 40°47'18" East, 566.53 feet; thence South 40°51'39" East, 1055.28 feet; thence North 70°39'00" East, 49.53 feet; thence North 40°45'48" West, 53.78 feet; thence North 72°08'24" East, 284.61 feet; thence North 88°57'30" East, 165.64 feet; ~~thence South 00°00'00" West, 30.11 feet; thence South 90°00'00" East, 803.97 feet;~~ thence North 00°05'00" West, 598.89 feet; thence South 89°59'24" East, 323.65 feet; thence South 00°08'17" East, 14.49 feet; thence North 89°50'54" East, 979.27 feet; thence North 00°00'00" West, 51.09 feet; thence South 51°00'00" East, 186.06 feet; thence South 70°00'00" East, 124.98 feet; thence North 53°41'00" East, 111.37 feet; thence North 48°01'00" East, 115.39 feet; thence North 54°50'00" East, 92.82 feet; thence North 54°33'00" East, 42.97 feet; thence North 42°21'00" East, 194.84 feet; thence North 35°56'00" East, 132.65 feet; thence North 35°04'03" East, 288.66 feet; thence North 30°35'10" East, 134.12 feet; thence South 89°24'21" East, 681.66 feet to the South Quarter Corner of Section 26; thence South 89°24'50" East, 1404.76 feet; thence South 15°24'48" East, 29.34 feet; thence South 75°25'59" East, 222.23 feet; thence North 44°52'11" East, 144.33 feet; thence North 34°00'08" East, 149.96 feet; thence North 55°22'00" East, 118.94 feet; thence North 55°22'00" East, 179.95 feet; thence South 45°46'14" East, 113.56 feet; thence North 48°40'00" East, 83.46 feet; thence North 01°30'05" West, 328.39 feet; thence North 33°58'00" East, 337.16 feet; thence North 09°31'46" East, 373.58 feet; thence North 22°13'53" East, 218.10 feet; thence North 35°14'54" East, 168.95 feet; thence North 47°53'13" East, 399.47 feet; thence North 89°25'48" East, 72.49 feet; thence North 05°55'48" East, 164.95 feet; thence North 07°58'48" East, 603.44 feet to a point that is North 4.78 feet and East 479.84 feet from the East Quart Corner of Section 26; thence North 89°25'48" East, 44.71 feet; thence North 07°27'31" East, 248.65 feet; thence North 01°20'50" West, 136.96 feet; thence North 01°20'50" West, 51.28 feet; thence North 20°25'42" East, 109.44 feet; thence North 27°26'50" East, 48.31 feet; thence North 45°35'26" East, 112.36 feet; thence North 32°00'45" East, 92.39 feet; thence North 23°17'20" East, 221.40 feet; thence North 35°37'33" East, 179.66 feet; thence South 14°47'26" East, 95.95 feet; thence South 03°32'59" East, 46.09 feet; thence South 07°31'43" West, 683.36 feet; thence along a curve to the left, the radius is 1342.89 feet, the arc length is 1333.25 feet, the chord bearing is South 20°54'49" East, the chord length is 1279.16 feet; thence North 00°11'38" East, 138.05 feet; thence North 34°59'31" East, 381.45 feet; thence South 00°00'00" West, 231.25 feet; thence North 88°50'56" West, 128.75 feet; thence South 42°05'51" East, 217.23 feet; thence North 01°09'01" East, 169.57 feet; thence South 90°00'00" East, 34.38 feet; thence North 00°02'39" West, 420.60 feet; thence North 45°25'58" East, 57.48 feet; thence North 06°00'32" East, 29.85 feet; thence North 88°27'07" East, 115.67 feet; thence North 39°51'00" East, 258.47 feet; thence North 00°12'03" West, 62.49 feet thence North 81°40'24" West, 10.83 feet; thence North 00°06'47" East, 349.95 feet; thence South 83°04'58" East, 746.73 feet; thence North 07°38'00" West, 765.42 feet; thence South 90°00'00" East, 113.41 feet; thence North 02°37'45" West, 767.27 feet; thence North 36°15'14" West, 218.22 feet; thence South 88°19'31" West, 104.69 feet; thence North 05°54'12" West, 591.49 feet; thence North 34°19'12" West, 90.66 feet; thence South 89°08'48" West, 212.56 feet to a point that is East 2105.30 feet and North 48.70 feet from the Northeast Corner of Section 26; thence North 01°30'48" East, 221.13 feet; thence North 03°23'12" West, 357.59 feet; thence North 01°55'48" East, 745.47 feet; thence North 87°08'48" East, 326.80 feet; thence North 41°03'37" West, 459.94 feet; thence North 21°36'53" West, 166.16 feet; thence North 08°04'11" East, 370.99 feet; thence North 00°51'54" East, 477.99 feet; thence North

07°15'10" West, 102.10 feet; thence South 89°24'32" West, 66.89 feet; thence North 00°27'12" West, 1314.47 feet; thence North 43°32'48" East, 604.27 feet; thence North 89°32'48" East, 48.83 feet; thence North 17°09'09" West, 72.11 feet; thence North 01°54'35" West, 296.30 feet; thence South 87°48'14" West, 57.30 feet; thence North 14°11'46" West, 92.57 feet; thence North 19°41'19" East, 21.48 feet; thence North 88°46'54" West, 12.43 feet; thence North 14°11'46" West, 54.54 feet; thence North 15°48'14" East, 207.68 feet; thence North 02°42'14" East, 23.56 feet; thence South 89°23'14" West, 527.83 feet to a point that is East 1940.44 feet; and North 42.33 feet from the Northeast Corner of Section 23; thence North 03°04'00" West, 68.70 feet; thence North 16°14'00" West, 115.74 feet; thence South 87°40'00" West, 89.73 feet; thence North 02°20'00" West, 79.98 feet; thence North 04°39'30" East, 164.17 feet; thence North 22°29'00" East, 244.83 feet; thence North 04°42'00" East, 342.49 feet; thence South 87°29'30" West, 79.98 feet; thence North 16°06'33" East, 273.13 feet; thence North 32°51'42" West, 29.28 feet; thence South 43°52'16" West, 13.05 feet; thence South 58°54'37" West, 45.68 feet; thence South 74°55'00" West, 47.97 feet; thence North 15°03'00" West, 31.46 feet; thence North 74°55'00" East, 41.42 feet; thence North 60°28'30" East, 56.10 feet; thence North 46°01'53" East, 102.96 feet; thence along a curve to the left, the radius is 141.44 feet, the arc length is 105.59 feet, the chord bearing is North 24°38'37" East, the chord length is 103.16 feet; thence North 02°52'13" East, 229.09 feet; thence along a curve to the right, the radius is 237.94 feet, the arc length is 146.41 feet, the chord bearing is North 20°29'54" East, the chord length is 144.11 feet; thence North 43°14'00" East, 198.79 feet; thence along a curve to the left, the radius is 81.46 feet, the arc length is 35.20 feet, the chord bearing is North 30°51'23" East, the chord length is 34.92 feet; thence North 15°42'25" East, 139.91 feet; thence North 07°27'00" East, 79.09 feet; thence South 87°47'00" West, 61.11 feet; thence North 20°40'02" East, 130.90 feet; thence South 69°30'53" East, 23.61 feet; thence North 19°20'31" East, 113.07 feet; thence North 61°36'00" East, 201.26 feet; thence North 82°43'13" East, 80.81 feet; thence South 00°49'41" East, 100.46 feet; thence North 21°47'03" East, 236.93 feet; thence North 16°15'49" East, 186.03 feet; thence North 02°24'00" East, 335.27 feet; thence North 12°47'03" East, 155.73 feet; thence North 16°58'23" East, 167.34 feet; thence North 04°05'07" East, 141.91 feet; thence North 13°13'34" West, 150.44 feet; thence North 19°59'35" West, 136.53 feet; thence North 09°15'49" West, 152.07 feet; thence North 06°47'26" East, 174.90 feet; thence North 28°39'21" East, 139.38 feet; thence North 35°25'27" East, 318.21 feet; thence North 20°06'09" East, 175.38 feet; thence North 07°02'31" East, 198.70 feet; thence North 11°48'15" East, 174.56 feet; thence North 18°49'03" East, 150.61 feet; thence North 15°00'29" East, 268.43 feet to a point that is East 695.19 feet and North 138.86 feet from the North Quarter Corner of Section 13; thence North 13°57'08" East, 133.80 feet; thence North 21°54'10" East, 98.54 feet; thence North 40°17'55" East, 108.01 feet; thence North 25°58'59" East, 146.59 feet; thence North 22°07'32" East, 205.56 feet; thence North 22°33'47" East, 181.73 feet; thence North 33°43'47" East, 168.53 feet; thence North 53°33'05" East, 134.02 feet; thence North 00°41'06" West, 76.81 feet; thence North 80°17'39" East, 32.05 feet; thence North 49°29'00" East, 39.59 feet; thence North 25°57'00" East, 1271.01 feet; thence South 25°24'24" East, 623.60 feet; thence South 89°58'24" East, 419.87 feet; thence South 00°53'01" East, 627.54 feet; thence South 89°58'24" East, 579.83 feet; thence North 09°18'45" West, 828.19 feet; thence North 02°17'21" West, 360.02 feet; thence North 07°30'25" East, 334.34 feet; thence North 19°26'41" East, 308.83 feet; thence North 23°50'39" East, 727.86 feet; thence North 33°37'33" East, 258.90 feet; thence North 87°48'18" East, 1603.20 feet; thence North 00°42'52" West, 2118.71 feet to a point that is East 2689.16 feet and North 907.68 feet from the Northeast Corner of Section 12; thence North 60°04'00" East, 1245.62 feet; thence North 00°00'00" East, 63.03 feet; thence North 60°04'00" East, 271.92 feet; thence along a curve to the left, the radius is 849.84 feet, the arc length is 504.30 feet, then chord bearing is North 43°04'00" East, the chord length is 496.94 feet; thence North 26°04'00" East, 403.38 feet; North 22°00'00" East, 395.98 feet; thence North 18°42'46" East, 454.10 feet; thence along a curve to the right, the radius is 371.99 feet, the arc length is 469.86 feet, the chord bearing is North 54°53'52" East, the chord length is 439.24 feet; thence South 86°16'30" East, 125.00 feet; thence South 05°01'00" West, 16.99 feet; thence South 85°32'52" East, 31.55 feet; thence along a curve to the left, the radius is 1478.37 feet, the arc length is 370.15 feet, the chord bearing is North 87°16'46" East, the chord length is 369.18 feet; thence North 79°00'50" East, 342.30 feet; thence along a curve to the right, the radius is 334.19 feet, the arc length is 354.01 feet, the chord bearing is South 70°38'22" East, the chord length is 337.69 feet; thence South 38°08'12" East, 472.25 feet; thence North 00°00'00" East, 1026.68 feet; thence North 90°00'00" West, 2639.19 feet; thence South 00°00'00" West, 1319.59 feet; thence North 90°00'00" West, 2689.01 feet to a point that is East 1330.94 feet and North 147.44 feet from the East Quarter Corner of Section 1; thence South 00°01'36" West, 1460.63 feet; thence North 89°36'11" West, 3275.51 feet; thence South 00°34'28" West, 197.94 feet; thence North 89°25'32" West, 791.76 feet; thence North 00°34'28" East, 197.94 feet; thence South 86°33'08" East, 175.46 feet; thence North 00°29'37" West, 1315.87 feet; thence North 89°49'17" West, 1334.19 feet; thence North 01°00'30" West, 1748.17 feet; thence North 41°22'29" West, 881.49 feet; thence North 00°00'00" East, 236.76 feet; thence North 89°47'27" West, 753.21 feet to the Northeast Corner of Section 2; thence North 89°53'07" West, 2663.35 feet along the Section Lie to the North Quarter

Corner of Section 2; thence North 89°53'00" West, 2665.19 feet along the Section Line to the Northeast Corner of Section 3, thence South 89°44'49" West, 2660.61 feet along the Section Line to the North Quarter Corner of Section 3; thence South 89°43'51" West, 2674.53 feet along the Section Line to the Northeast Corner of Section 4; thence South 89°45'18" West, 1330.71 feet along the Section Line to the North Quarter Corner of Section 4; thence South 01°00'59" East, 1406.50 feet; thence South 89°53'23" West, 649.88 feet; thence South 22°07'10" East, 1345.99 feet; thence South 89°38'46" West, 3830.97 feet to the point of beginning.

PLEASANT GROVE CITY, UTAH
BOUNDARY DESCRIPTION

Beginning at the Southeast Corner of Section 16, Township 5 South, Range 2 East, Salt Lake Base and Meridian; thence along the Grove Creek East Annexation recorded March 10 of 2000 the following eighteen courses: North 89°59'56" East, 2404.51 feet; South 20°33'26" West, 137.39 feet; South 45°00'03" West, 155.52 feet; South 39°33'38" West, 149.12 feet; South 65°59'47" West, 194.74 feet; South 67°21'45" West, 77.98 feet; South 20°19'18" West, 67.12 feet; South 35°31'19" West, 70.51 feet; South 58°35'37" West, 57.45 feet; South 29°01'13" West, 77.72 feet; South 60°26'53" West, 56.96 feet; South 25°21'41" West, 94.28 feet; South 35°33'16" West, 82.43 feet; South 76°22'38" West, 73.12 feet; South 41°09'22" West, 87.81 feet; South 25°31'48" West, 56.29 feet; South 25°31'56" West, 14.97 feet; South 51°31'46" West, 76.15 feet; thence along the Pleasant Grove City Boundary recorded January 21 of 1979 the following courses: South 24°59'38" East, 2406.22 feet; North 89°59'56" East, 497.03 feet; South 00°00'01" West, 329.12 feet; South 89°59'56" West, 343.63 feet; South 24°59'46" East, 1525.30 feet; North 00°00'01" East, 639.25 feet; South 89°59'56" West, 85.88 feet; North 00°00'04" East, 20.00 feet; North 17°49'23" West, 203.38 feet; North 17°46'49" West, 39.70 feet; ~~North 38°56'18" West, 56.48 feet; North 89°59'56" East, 162.76 feet; North 00°47'04" West, 91.19 feet; North 00°52'33" West, 81.76; North 89°59'56" East, 176.50 feet; North 00°00'01" East, 282.93 feet; North 89°59'56" East, 298.14 feet; North 00°00'01" East, 558.87 feet; North 89°59'56" East, 1365.69 feet; South 00°00'01" West, 1308.63 feet; South 89°59'56" West, 967.80 feet; South 37°42'50" West, 435.88 feet; South 21°38'29" East, 16.60 feet; South 64°45'44" West, 405.47 feet; South 48°15'30" West, 180.43 feet; South 48°16'56" West, 45.55 feet; South 48°02'17" West, 20.00 feet; South 24°59'33" East, 3705.18 feet; thence along the Lindon / Pleasant Grove Common Boundary Adjustment recorded March 10 of 1995 the following courses: South 25°07'48" East, 57.98 feet; North 89°47'57" West, 124.00 feet; North 89°46'59" West, 1076.65 feet; thence along the Pleasant Grove / Lindon Boundary Adjustment recorded February 28 of 2007 the following courses: South 00°26'49" West, 12.41 feet; South 89°53'37" West, 915.00 feet; North 88°32'54" West, 52.32 feet; North 85°38'43" West, 52.32 feet; North 82°44'31" West, 52.32 feet; North 80°47'56" West, 17.71 feet; North 80°18'29" West, 23.28 feet; North 89°43'31" West, 8.62 feet; North 80°18'28" West, 278.31 feet; North 81°10'19" West, 14.02 feet; North 89°29'00" West, 6.98 feet; North 84°48'02" West, 31.70 feet; North 88°07'25" West, 22.42 feet; North 89°30'00" West, 72.80 feet; thence again following the said Lindon / Pleasant Grove Common Boundary Adjustment the following courses: South 00°30'08" West, 3.10 feet; South 00°37'03" West, 46.38 feet; South 00°00'32" West, 2.37 feet; South 00°27'07" West, 47.50 feet; North 89°29'56" West, 769.81 feet; North 00°29'44" East, 43.37 feet; North 5.12 feet; North 00°35'48" East, 48.00 feet; North 00°29'57" East, 3.12 feet; thence again along the said Pleasant Grove City Boundary recorded 1979 the following: North 89°29'59" West, 1043.61 feet; thence again along the Pleasant Grove / Lindon Boundary Adjustment recorded 2007 the following courses: South 89°42'29" West, 12.91 feet; South 86°44'49" West, 35.33 feet; South 82°24'35" West, 35.33 feet; South 78°04'20" West, 35.33 feet; South 73°44'06" West, 35.33 feet; South 70°40'47" West, 14.45 feet; South 71°18'04" West, 28.04 feet; South 74°49'53" West, 37.60 feet; South 78°52'35" West, 37.60 feet; South 82°55'17" West, 37.60 feet; South 86°23'06" West, 26.81 feet; South 89°43'51" West, 1940.61 feet; along a curve to the right with a chord bearing of North 84°46'43" West, 102.30 feet; North 79°14'53" West, 75.70 feet; along a curve to the left with a chord bearing of North 84°46'16" West, 89.12 feet; South 89°43'35" West, 459.78 feet; along a curve to the right with a chord bearing North 85°51'05" West, 158.92 feet; North 81°04'41" West, 4.42 feet; North 81°12'26" West, 111.94 feet; along a curve to the left with chord bearing South 85°51'38" East, 156.66 feet; North 89°47'09" West, 149.63 feet; South 89°30'27" West, 838.07 feet; South 02°22'24" East, 235.45 feet; South 70°56'16" West, 189.66 feet; North 18°57'47" West, 30.00 feet; South 70°54'24" West, 55.03 feet; North 42°11'31" West, 352.52 feet; along a curve to the left with chord bearing South 69°19'31" West, 191.19 feet; North 42°18'03" West, 151.93 feet; North 89°46'16" West, 3161.77 feet; North 89°38'00" West, 131.43 feet; North 89°43'35" West, 857.74 feet; North 89°59'24" West, 1103.18 feet; thence along the Pleasant Grove Southwest Annexation recorded July 18 of 1993 the following courses: North 89°59'24" West, 1451.27 feet; South 00°07'57" East, 258.39 feet; South 89°32'13" West, 1144.79 feet; South 2581.14 feet; North 49°52'10" West, 4010.88 feet; East, 268.38 feet; thence along the Baker~~

Investment, LLC Property Annexation recorded September 18 of 2003 the following courses: North 53°30'38" West, 157.16 feet; North 57°23'32" West, 247.21 feet; North 00°19'54" East, 1132.94 feet; thence along the Sager Annexation recorded October 18 of 2006 the following courses: North 53.98 feet; West 302.55 feet; thence along the Matt Smith Annexation recorded October 18 of 2006 the following courses: West 474.82 feet; North 00°42'25" West, 552.50 feet; thence along the Sager Annexation recorded October 18 of 2006 North 00°42'29" West, 220.73 feet; thence along the DMB Investments Annexation recorded January 17 of 2007 North 00°42'31" West, 409.379; thence again along the said Sager Annexation the following courses: North 00°42'28" West, 964.90 feet; North 89°52'18" East, 809.31 feet; thence again along the said Pleasant Grove Southwest Annexation the following courses: North 1011.30 feet; South 89°09'25" East, 310.03 feet; North 1339.57 feet; thence along the Thomas A. Searle Addition recorded February 11 of 1988 the following courses: North 255.31 feet; South 88°58'06" East, 166.65 feet; South 88°53'54" East, 13.00 feet; thence along the Pleasant Grove / American Fork Boundary Adjustment recorded March 20 of 2000 the following courses: South 89°45'02" East, 36.44 feet; North 00°17'38" West, 582.02 feet; North 00°24'11" West, 30.55 feet; North 36°53'43" West, 39.35 feet; thence again along the said Thomas A. Searle Addition the following courses: South 73°21'30" East, 74.63 feet; North 81.93 feet; thence along the Swenson Addition recorded May 1 of 1979 the following courses: North 00°40'07" East, 353.78 feet; North 00°40'41" East, 1151.97 feet; North 00°40'22" East, 447.20 feet; South 89°13'29" East, 231.02 feet; South 89°14'53" East, 623.93 feet; thence along the Tanner Annexation recorded June 19 of 1992 the following courses: North 00°33'01" East, 729.35 feet; South 89°23'37" East, 165.26 feet; thence along the Durfey Addition recorded July 13 of 1994, South 89°23'29" East, 329.47 feet; thence along the Clements Addition recorded December 10 of 2001 the following courses: North 00°33'23" East, 418.92 feet; North 00°33'11" East, 241.93 feet; East 338.64 feet; thence along the Manila Addition recorded October 16 of 1979 the following courses: North 00°41'50" East, 1363.66 feet; West 331.37 feet; North 00°00'53" East, 493.56 feet; North 00°00'05" East, 42.87 feet; East 164.87 feet; ~~North 00°13'20" West, 2671.16 feet; thence along the Pleasant Grove Northwest Annexation recorded October 20 of~~ 1993, North 00°19'34" West, 1322.10 feet; thence along the Warnick Dairy Annexation recorded April 11 of 2007 the following courses: West 330.85 feet; North 00°19'26" West, 1289.61 feet; North 89°24'24" East, 159.80 feet; North 00°22'55" West, 34.47 feet; thence along the Christensen - Harvey Annexation recorded January 10 of 2001 the following courses: North 00°25'31" West, 1194.50 feet; North 00°34'12" East, 50.25 feet; North 01°10'59" East, 66.57 feet; North 00°32'01" East, 360.34 feet; North 00°31'58" East, 284.19 feet; North 02°08'02" East, 117.58 feet; North 74°24'46" West, 5.63 feet; North 00°00'03" East, 22.38 feet; South 70°47'36" East, 168.73 feet; South 00°20'58" East, 9.04 feet; thence again along the said Pleasant Grove Northwest Annexation the following courses: along a curve to the left with chord bearing South 80°49'46" East, 242.80 feet; South 85°20'09" East, 259.84 feet; South 85°20'00" East, 410.43 feet; along a curve to the right with chord bearing South 74°10'49" East, 133.18 feet; South 63°04'52" East, 200.75 feet; along a curve to the left with chord bearing South 77°34'00" East, 275.65 feet; North 88°09'16" East, 188.22 feet; thence along the Manila Township Annexation No. 2 recorded May 27 of 1997 the following courses: North 00°32'24" East, 49.60 feet; North 00°37'01" East, 43.35 feet; North 00°37'56" West, 531.50 feet; North 00°37'33" West, 291.92 feet; North 87°23'42" East, 141.65 feet; thence along the North Manila Township Annexation recorded March 26 of 1998 the following courses: North 22°03'37" West, 15.30 feet; North 30°40'56" West, 93.82 feet; North 17°55'30" West, 88.94 feet; North 49°14'24" West, 147.04 feet; North 29°23'15" West, 109.53 feet; North 14°31'10" East, 82.77 feet; North 55°23'30" West, 169.80 feet; North 68°52'18" West, 39.53 feet; North 00°09'34" West, 44.88 feet; North 00°06'09" East, 491.63 feet; North 89°02'22" East, 201.28 feet; North 89°29'06" East, 382.39 feet; North 88°32'49" East, 160.17 feet; North 00°13'33" West, 126.56 feet; South 89°06'57" East, 315.91 feet; North 109.93 feet; East 150.12 feet; North 29.06 feet; North 89°41'09" East, 57.00 feet; thence along the Pleasant Grove / Cedar Hills Boundary Adjustment recorded December 17 of 1999 the following courses: East, 437.77 feet; South 00°34'59" East, 99.97 feet; East 71.22 feet; North 89°27'59" East, 48.28 feet; North 00°34'59" West, 332.49 feet; thence along the Cedar Hills / Pleasant Grove Boundary Adjustment recorded December 3 of 2002 the following courses: North 89°58'24" East, 63.52 feet; North 89°57'44" East, 201.52 feet; North 13°32'28" West, 422.73 feet; South 78°09'00" West, 156.52 feet; North 82°40'00" West, 208.76 feet; thence again along the said North Manila Township Annexation the following courses: North 05°56'10" West, 200.44 feet; South 82°59'11" West, 343.44 feet; South 83°01'16" West, 24.18 feet; South 82°58'58" West, 33.25 feet; South 00°01'48" East, 352.36 feet; thence along the said Pleasant Grove Common Boundary Adjustment the following courses: South 89°59'44" West, 153.39 feet; South 00°01'50" East, 125.21 feet; thence again along the said North Manila Township Annexation South 89°59'48" West, 160.52 feet; thence again along the Pleasant Grove / Cedar Hills Common Boundary Adjustment the following courses: North 00°00'15" West, 104.20 feet; along a curve to the right with chord bearing North 59°39'05" West, 30.33 feet; along a curve to the left with chord bearing North 64°48'17" West, 12.80 feet; South 89°59'44" West, 119.21 feet; thence again along the North Manila Township Annexation the following courses: West 157.12 feet; North 00°13'10" West, 195.63 feet; North 89°52'47"

East, 149.13 feet; North 139.94 feet; South 89°51'01" East, 119.63 feet; along a curve to the left with chord bearing North 35°03'09" West, 100.55 feet; along a curve to the right with chord bearing North 41°36'19" West, 64.19 feet; South 89°52'22" West, 169.50 feet; North 00°14'56" West, 172.38 feet; South 40°22'30" East, 51.52 feet; North 49°34'56" East, 35.96 feet; North 40°15'54" West, 43.90 feet; South 89°35'50" West, 17.75 feet; North 00°29'40" West, 173.75 feet; North 89°29'36" East, 157.01 feet; thence along the said Pleasant Grove Common Boundary Adjustment the following courses: along a curve to the left with chord bearing South 44°32'10" West, 21.18 feet; South 00°01'52" East, 136.80 feet; South 00°58'59" East, 9.96 feet; North 89°59'46" East, 147.82 feet; thence along another Cedar Hills / Pleasant Grove Boundary Adjustment recorded December 3 of 2002 the following courses: South 89°59'41" East, 86.96 feet; South 07°55'58" East, 109.07 feet; North 89°58'10" East, 224.93 feet; North 00°08'37" West, 127.71 feet; thence along the E. Johnson Disconnection recorded November 8 of 2007 the following courses: East 371.96 feet; North 06°07'00" West, 145.69 feet; thence again along the North Manila Township Annexation the following courses: South 89°43'40" East, 295.21 feet; South 89°42'17" East, 48.50 feet; South 06°01'32" East, 242.90 feet; North 59°27'59" East, 141.36 feet; North 69°21'16" East, 65.59 feet; South 110.00 feet; South 10°55'36" East, 23.74 feet; South 10°53'46" East, 156.03 feet; South 13°29'46" East, 159.08 feet; North 89°59'52" East, 9.63 feet; South 13°30'18" East, 308.85 feet; North 89°59'56" East, 177.51 feet; South 00°04'20" East, 449.90 feet; thence again along the Pleasant Grove Common Boundary Adjustment the following courses: North 89°57'42" West, 355.21 feet; South 13°11'59" East, 129.12 feet; South 13°39'45" East, 155.23 feet; thence North 89°47'56" East, 289.38 feet; thence again along the North Manila Township Annexation the following courses: South 00°04'20" East, 163.43 feet; South 89°54'33" West, 79.63 feet; thence South 89°49'00" West, 177.01 feet; South 13°34'17" East, 112.19 feet; thence again along the Pleasant Grove Common Boundary Adjustment the following courses: South 89°57'36" West, 200.64 feet; South 89°58'06" West, 90.55 feet; South 89°25'57" West, 174.38 feet; South 00°38'51" East, 437.12 feet; South 88°50'53" East, 222.00 feet; South 00°02'18" East, 3.33 feet; South 88°50'35" East, 354.31 feet; thence again along the North Manila Township Annexation the following courses: South 16°56'45" East, 133.81 feet; South 17°42'38" East, 251.48 feet; South 00°09'16" East, 46.12 feet; South 17°36'18" East, 424.04 feet; North 68°56'12" East, 178.43 feet; thence along the said Cedar Hills / Pleasant Grove Boundary Adjustment the following courses: North 64°06'24" East, 38.85 feet; South 17°39'14" East, 11.83 feet; South 89°59'20" West, 17.16 feet; thence again along the North Manila Township Annexation the following courses: South 16°54'31" East, 433.22 feet; North 89°59'54" East, 26.00 feet; South 46°09'30" East, 207.98 feet; South 89°56'31" West, 314.89 feet; South 89°53'26" West, 33.13 feet; North 17°46'50" West, 155.55 feet; South 89°06'41" West, 32.25 feet; North 17°37'09" West, 525.72 feet; thence along the Ross Monson / Cedar Hills Boundary Adjustment recorded December 17 of 1999 the following courses: North 17°37'23" West, 7.50 feet; South 89°59'56" West, 211.29 feet; South 235.93 feet; South 89°59'56" West, 108.37 feet; South 187.93 feet; thence along the said North Manila Township Annexation, West 143.33 feet; thence along the Elliott / Olson Boundary Adjustment recorded February 3 of 2005 the following courses: North 00°43'21" West, 278.22 feet; South 89°15'41" West, 5.80 feet; North 02°00'53" West, 57.48 feet; North 00°35'20" West, 22.22 feet; South 89°56'48" West, 205.10; South 89°56'38" West, 6.90 feet; thence again along the said North Manila Township Annexation the following courses: North 287.90 feet; West 621.25 feet; thence again along the said Manila Township Annexation No. 2, South 00°36'15" East, 967.40 feet; thence along the Schow Addition recorded March 27 of 2002 the following courses: along a curve to the right with chord bearing South 66°16'31" East, 41.85 feet; South 64°04'29" East, 284.90 feet; thence along the Schow Addition #3 recorded September 9 of 2004 the following courses: South 64°04'31" East, 37.88 feet; South 62°53'45" East, 30.70 feet; South 60°00'00" East, 44.53 feet; South 57°45'01" East, 13.91 feet; South 57°13'01" East, 150.16 feet; South 58°07'40" East, 33.56 feet; South 60°28'48" East, 52.98 feet; South 62°10'38" East, 9.46 feet; South 62°26'00" East, 664.20 feet; South 61°13'35" East, 23.25 feet; South 58°00'00" East, 37.91 feet; South 54°00'00" East, 37.92 feet; South 50°49'13" East, 22.36 feet; thence along the said Manila Township Annexation No. 1 recorded May 27 of 1997 the following courses: North 568.70 feet; North 89°59'56" East, 335.02 feet; South 16°56'44" East, 604.30 feet; South 89°51'42" West, 26.25 feet; South 17°44'58" East, 180.00 feet; South 89°59'56" West, 300.64 feet; South 37°35'00" East, 365.23 feet; South 29°49'43" East, 96.76 feet; South 21°27'45" East, 86.10 feet; South 16°06'11" East, 219.03 feet; North 89°59'56" East, 117.00 feet; North 17°45'38" West, 629.04 feet; North 89°53'15" East, 64.38 feet; North 89°51'20" East, 324.52 feet; South 17°24'40" East, 549.36 feet; South 19°02'44" West, 59.38 feet; South 18°07'37" West, 7.23 feet; South 89°50'30" West, 114.00 feet; West 13.63 feet; South 00°17'54" East, 120.00 feet; South 89°50'40" West, 116.00 feet; South 17°53'11" East, 251.53 feet; South 62°24'06" West, 3.10 feet; South 17°52'50" East, 201.94 feet; South 17°53'40" East, 133.85 feet; North 72°06'45" East, 357.55 feet; South 00°57'09" East, 505.35 feet; thence along the Thompson / Christensen Boundary Adjustment recorded April 22 of 2002 the following courses: South 51°13'35" West, 126.83 feet; North 59°42'41" West, 32.99 feet; along a curve to the left with chord bearing North 76°13'26" West, 54.40 feet; South 87°16'52" West, 22.70 feet; South 17°53'07" East, 46.98 feet;

South 59°10'10" East, 18.80 feet; South 47°40'23" East, 26.17 feet; South 47°40'04" East, 30.87 feet; South 36°09'07" East, 230.37 feet; thence again along the Manila Township Annexation No. 1 the following courses: South 36°01'04" East, 191.69 feet; along a curve to the right with chord bearing South 31°45'30" East, 223.01 feet; South 27°34'17" East, 348.94 feet; along a curve to the left with chord bearing South 37°17'44" East, 226.10 feet; South 46°59'43" East, 405.29 feet; along a curve to the left with chord bearing South 50°41'31" East, 123.91 feet; South 54°19'34" East, 271.14 feet; thence along the Manila Addition recorded October 16 of 1979 the following courses: North 89°39'08" East, 1477.35 feet; to the Northeast Corner of Section 17; South 00°31'12" East, 1335.06 feet; South 32°47'11" East, 3380.28 feet; thence again along the said Pleasant Grove City Boundary the following courses: North 81°20'39" East, 193.97 feet; North 76°43'18" East, 547.28 feet; North 89°56'01" East, 164.88 feet; North 00°03'27" West, 495.75 feet; North 89°56'02" East, 221.38 feet; South 47°52'18" East, 361.04 feet; South 60°07'43" East, 127.87 feet; South 36°57'02" East, 217.10 feet; South 17°47'22" East, 54.41 feet; South 04°49'12" West, 642.71 feet; South 59°06'21" East, 815.05 feet; South 249.12 feet; North 83°52'17" East, 355.43 feet; North 89°45'45" East, 212.26 feet; thence again along the Grove Creek East Annexation North 89°59'52" East, 684.32 feet to the point of beginning.

PROVO CITY, UTAH
BOUNDARY DESCRIPTION

Beginning at the West Quarter Corner of Section 28, Township 6 South, Range 3 East, Salt Lake Base and Meridian; thence along the Heritage Mountain Ski Area Annexation recorded January 19 of 1978 the following courses: North 86°53'08" East, 2635.96 feet to the Center of said Section 28; North 86°43'17" East, 1333.75 feet; North 00°34'19" West, 1339.45 feet; North 86°33'04" East, 1335.49 feet; North 00°30'03" West, 1343.44 feet to the Northeast Corner of said Section 28; ~~North 01°53'00" West, 1312.03 feet; South 87°50'47" East, 2749.58 feet; North 01°00'47" West, 1307.77 feet to the Center of Section 22; South 87°47'01" East, 2636.23 feet to the East Quarter Corner of said Section 22; North 00°46'37" West, 1326.76 feet; North 89°04'16" East, 2628.48 feet; North 89°04'21" East, 1314.24 feet; South 00°17'06" West, 1333.03 feet; North 89°09'35" East, 1306.08 feet to the East Quarter Corner of Section 23; North 89°46'12" East, 1376.46 feet; South 00°28'29" West, 1328.31 feet; North 89°29'07" East, 1380.50 feet; North 89°29'07" East, 1380.50 feet; South 00°08'11" West, 1314.51 feet; North 89°12'08" East, 1384.46 feet to the Southeast Corner of Section 24; South 00°07'09" East, 359.57 feet to the Northwest Corner of Section 30, Township 6 South, Range 4 East; South 89°29'09" East, 1563.64 feet; South 00°12'21" West, 5227.70 feet; North 89°40'53" West, 1534.98 feet to the Northeast Corner of Section 31; South 00°06'28" East, 5226.70 feet to the Southeast Corner of Section 36, Township 6 South, Range 3 East; North 89°19'45" West, 2664.82 feet to the South Quarter Corner of said Section 36; South 00°13'42" East, 1344.29 feet; North 89°22'51" West, 2672.79 feet; North 89°46'53" West, 2655.53 feet; South 00°16'18" East, 1367.67 feet to the Center of Section 2, Township 7 South, Range 3 East; South 89°45'39" West, 2646.29 feet to the West Quarter Corner of said Section 2; North 89°34'44" West, 2654.83 feet to the Center of Section 3; South 00°43'11" East, 1381.89 feet; North 88°37'19" West, 2656.78 feet; South 88°17'44" West, 2659.94 feet; South 88°17'49" West, 2586.40 feet; South 02°25'50" West, 1309.21 feet to the Southwest Corner of Section 4; thence the along the Provo City Annexation recorded in 1849 the following courses: South 00°18'31" East, 2615.53 feet to the East Quarter Corner of Section 8; South 00°20'59" East, 981.10 feet; thence along the Provo 1st and 2nd Ward Pasture Annexation recorded June 19 of 1905 the following courses: South 00°20'59" East, 1635.19 feet to the Southeast Corner of said Section 8; South 01°14'54" East, 2637.99 feet to the East Quarter Corner of Section 17; thence along the Zions M-13 Annexation, South 01°09'23" East, 2661.79 feet to the Southeast Corner of said Section 17; thence along the East Mountain Annexation recorded June 7 of 2006 the following courses: South 01°29'37" East, 438.88 feet; thence along the Steel City Addition "B" recorded November 6 of 1980 the following courses: South 32°43'52" East, 69.06 feet; South 57°15'16" West, 199.90 feet; thence along the Zions M-13 Annexation No. 2, South 57°15'25" West, 359.97 feet; thence again along the said Steel City Addition "B" the following courses: South 57°15'17" West, 204.06 feet; North 38°16'54" West, 486.88 feet; North 50°38'07" West, 16.65 feet; North 50°44'45" West, 45.04 feet; thence along the Steel City Addition recorded April 22 of 1952, South 30°09'15" West, 87.10 feet; thence along the Billings Technology Park Annexation recorded July 22 of 1976 the following courses: South 47°33'07" East, 64.54 feet; South 64°23'36" West, 3.33 feet; thence along the Billings Technology Park Annexation recorded March 23 of 1978 the following courses: South 35°18'27" East, 2063.13 feet; South 16°36'06" East, 253.31 feet; South 35°52'37" East, 149.95 feet; North 89°59'57" East, 102.26 feet; South 35°47'03" East, 1323.94 feet; South 08°31'29" West, 53.97 feet; South 37°34'30" East, 235.95 feet; North 00°00'03" East, 51.87 feet; South 35°45'33" East, 145.03 feet; South 14°25'01" East, 1835.00 feet; North 89°50'10" West, 826.55 feet; South 00°20'29" East, 460.39 feet; North 88°48'16" West, 155.67 feet; North 88°48'18" West, 494.13 feet; North 80°02'27" West, 775.48 feet; North 78°13'42" West, 394.57~~

feet; North 63°45'48" West, 78.46 feet; North 22°09'53" West, 21.87 feet; North 22°01'19" West, 730.43 feet; North 22°01'59" West, 2223.55 feet; North 22°02'00" West, 1227.21 feet; North 21°59'15" West, 844.03 feet; thence again along the Billings Technology Park Annexation of 1976, North 22°00'04" West, 339.68 feet; thence along a different Billings Technology Park Annexation recorded June 22 of 1976 the following courses: North 21°59'51" West, 1106.64 feet; North 22°00'03" West, 299.98 feet; North 25°14'36" West, 199.90 feet; North 28°14'44" West, 82.94 feet; North 29°42'03" West, 199.82 feet; North 33°39'49" West, 148.38 feet; along a curve to the right with a chord bearing of South 36°06'01" West, 344.77 feet; North 51°30'37" East, 346.57 feet; thence again along the Steel City Addition the following courses: along a curve to the right with chord bearing South 37°30'31" East, 171.84 feet; North 32°21'28" West, 491.88 feet; North 85°59'59" West, 268.42 feet; North 08°50'39" West, 100.00 feet; South 89°29'54" West, 536.42 feet; North 38°12'59" West, 826.04 feet; thence again along the Provo 1st and 2nd Ward Pasture Annexation the following courses: South 89°24'15" West, 523.68 feet; South 89°27'34" West, 351.66 feet; thence along the Industrial Addition No. 1 recorded January 30, 1970 the following courses: South 00°31'16" East, 494.16 feet; North 72°32'01" West, 799.78 feet; along a curve to the right with chord bearing North 64°34'42" West, 232.80 feet; North 00°29'34" West, 145.20 feet; thence again along the Provo 1st and 2nd Ward Pasture Annexation, South 89°27'48" West, 407.79 feet; thence along the Waterfront Addition recorded December 4 of 1962, South 12°29'38" East, 714.75 feet; thence along the Provo Bay Addition recorded January 9 of 1984 the following courses: North 85°45'52" East, 6.77 feet; South 13°28'00" East, 3340.78 feet; South 89°28'11" West, 1799.55 feet; South 00°32'04" East, 214.08 feet; North 85°13'57" West, 248.88 feet; North 72°16'19" West, 1324.06 feet; South 89°59'57" West, 1249.69 feet; South 00°00'03" West, 1584.53 feet; South 89°59'57" West, 2114.56 feet; North 00°00'03" East, 10273.20 feet; thence again along the Provo City Annexation the following courses: North 10°49'27" West, 91.19 feet; North 39°08'36" West, 1291.31 feet; North 41°25'34" West, 1056.10 feet; North 41°20'55" West, 775.60 feet; North 17°31'38" West, 928.09 feet; North 26°33'39" East, 572.84 feet; North 55°18'46" East, 368.36 feet; North 42°37'10" West, 791.24 feet; North 68°37'51" East, 575.33 feet; thence along the Boat Harbor Addition recorded December 13 of 1948 the following courses: North 88°46'55" West, 296.71 feet; North 83°39'40" West, 379.21 feet; North 87°31'51" West, 137.76 feet; North 16°55'29" East, 143.86 feet; North 28°08'51" East, 291.76 feet; North 00°47'50" West, 430.73 feet; North 20°28'09" East, 427.90 feet; North 62°31'52" East, 364.91 feet; South 47°00'05" East, 591.38 feet; thence along the Boat Harbor Addition Plat D recorded June 3 of 1976 the following courses: South 80°26'41" East, 1285.65 feet; South 00°00'03" West, 619.63 feet; thence again along the Boat Harbor Addition, South 87°59'51" East, 234.16 feet; thence again along the Provo City Annexation the following courses: North 00°00'02" East, 191.63 feet; North 66°47'46" East, 177.36 feet; South 60°15'45" East, 375.60 feet; South 86°49'07" East, 419.92 feet; South 58°40'14" East, 627.08 feet; South 73°29'37" East, 215.13 feet; South 18°27'17" East, 231.80 feet; South 21°16'37" West, 141.59 feet; South 53°43'48" West, 136.29 feet; South 83°16'39" West, 125.50 feet; South 57°16'47" West, 121.99 feet; South 64°16'57" East, 219.64 feet; South 83°22'28" East, 317.39 feet; North 83°40'16" East, 132.69 feet; North 71°33'46" East, 556.33 feet; South 82°23'46" East, 110.98 feet; North 74°27'11" East, 136.89 feet; North 02°38'41" East, 476.95 feet; North 00°46'32" West, 535.12 feet; North 42°15'26" East, 108.94 feet; South 84°49'09" East, 80.96 feet; South 55°36'39" East, 168.75 feet; South 75°59'40" East, 60.42 feet; South 16°42'14" East, 153.09 feet; South 34°18'05" East, 195.20 feet; South 57°31'38" East, 191.14 feet; South 22°21'16" East, 134.75 feet; South 59°25'52" East, 187.29 feet; South 87°36'06" East, 176.16 feet; North 60°55'54" East, 75.52 feet; North 40°50'15" East, 571.60 feet; North 65°31'57" East, 88.59 feet; South 81°15'33" East, 192.88 feet; North 80°32'32" East, 222.92 feet; North 24°46'47" West, 104.98 feet; North 03°34'06" West, 234.96 feet; North 34°57'25" East, 89.45 feet; North 74°28'03" East, 137.01 feet; North 48°11'15" East, 186.84 feet; North 17°37'16" East, 133.39 feet; thence along the Lakeview Addition No. 4 recorded October 13 of 1993, North 00°10'52" West, 118.38 feet; thence along the Lakeview Addition No. 5 recorded July 7 of 1995, North 00°13'15" West, 2165.55 feet; thence along the Lakeview Addition No. 3 recorded July 14 of 1992, North 00°48'34" West, 945.73 feet; thence along the Lakeview Addition No. 6 recorded November 23 of 1998 the following courses: North 01°00'44" West, 7.06 feet; North 00°49'59" West, 1056.87 feet; North 25°38'14" East, 583.68 feet; thence along the Lakeview Addition No. 7 recorded May 29 of 2002 the following courses: North 62°45'06" West, 294.84 feet; North 00°50'08" West, 112.34 feet; North 00°36'36" West, 151.00 feet; North 89°50'54" East, 1654.42 feet; thence again along the Lakeview Addition No. 3 the following courses: North 40°59'47" West, 222.00 feet; North 58°57'44" East, 39.38 feet; thence along the Lakeview Addition No. 8 recorded March 3 of 2004 the following courses: North 39°37'41" West, 522.92 feet; North 41°35'15" West, 200.42 feet; North 45°41'15" West, 237.26 feet; North 50°04'45" West, 251.61 feet; North 52°19'39" West, 501.96 feet; North 52°20'14" West, 434.09 feet; North 49°40'11" West, 304.13 feet; North 40°22'23" West, 261.00 feet; North 31°38'18" West, 214.78 feet; North 28°01'06" West, 234.41 feet; North 27°43'53" West, 81.16 feet; South 89°31'48" East, 662.72 feet; South 89°34'03" East, 1271.69 feet; South 89°34'03" East, 741.69 feet; South 89°34'03" East, 111.67 feet; South 41°44'10" East, 40.46 feet; South 89°34'03" East, 328.81 feet; South

40°49'36" East, 377.01 feet; North 20°51'46" West, 84.63 feet; South 40°51'26" East, 335.43 feet; South 40°41'33" East, 230.95 feet; South 40°51'45" East, 1008.22 feet; thence along the Orem / Provo Boundary Adjustment recorded May 9 of 2005 the following courses: along a curve to the right with chord bearing North 76°37'48" East, 496.52 feet; South 03°16'12" East, 20.81 feet; South 03°16'12" East, 13.28 feet; thence along the Crandell Addition recorded July 29 of 1980 the following courses: North 89°51'03" East, 789.02 feet; North 89°54'26" East, 38.88 feet; thence along the West Grand View Addition recorded October 27 of 1943, North 01°14'48" West, 31.93 feet; thence along the Orem / Provo Boundary Adjustment recorded August 13 of 2003 the following courses: East 256.34 feet; along a curve to the left with chord bearing North 44°55'28" East, 36.81 feet; North 00°09'06" West, 418.95 feet; North 02°17'53" West, 33.02 feet; North 05°37'52" West, 18.26 feet; North 06°49'04" West, 52.65 feet; thence along the Provo / Orem Boundary Adjustment recorded December 18 of 1991, North 89°59'53" East, 21.86 feet; thence along the Orem Davis Addition recorded November 14 of 1978, North 89°50'56" East, 979.30 feet; thence along the Provo / Orem Boundary Adjustment recorded December 18 of 1991 the following courses: North 00°00'02" East, 46.50 feet; South 52°05'21" East, 8.24 feet; South 46°41'57" East, 56.68 feet; South 46°45'28" East, 38.95 feet; South 55°10'07" East, 114.68 feet; South 71°27'39" East, 11.20 feet; South 71°34'04" East, 32.02 feet; North 74°56'37" East, 42.59 feet; North 56°18'37" East, 98.26 feet; North 49°44'59" East, 57.65 feet; North 49°48'25" East, 35.35 feet; North 51°14'28" East, 39.44 feet; North 53°34'13" East, 22.84 feet; North 58°52'05" East, 4.66 feet; North 58°52'05" East, 71.86 feet; North 49°11'40" East, 53.18 feet; North 49°09'25" East, 33.54 feet; North 42°08'47" East, 97.62 feet; North 38°53'15" East, 108.72 feet; North 41°55'20" East, 109.45 feet; North 42°05'05" East, 35.62 feet; North 37°03'33" East, 83.80 feet; North 40°05'25" East, 101.71 feet; North 32°04'19" East, 133.72 feet; North 18°04'47" East, 28.60 feet; North 17°26'58" East, 9.17 feet; East 2.25 feet; South 89°22'24" East, 655.95 feet; North 89°59'26" East, 2.25 feet; South 89°25'19" East, 1335.39 feet; South 15°12'43" East, 29.54 feet; South 75°26'00" East, 221.89 feet; North 44°53'25" East, 114.60 feet; North 44°55'00" East, 29.74 feet; North 34°00'32" East, 149.97 feet; North 55°21'36" East, 298.87 feet; South 45°53'33" East, 17.06 feet; South 45°48'31" East, 81.59 feet; thence along the Carterville Addition to Provo recorded on February 29 of 1940 the following courses: South 45°30'39" East, 14.89 feet; North 48°48'53" East, 83.72 feet; North 23.75 feet; North 00°59'46" East, 64.76 feet; North 00°52'44" East, 236.41 feet; North 01°24'51" East, 10.13 feet; North 18°58'09" East, 48.84 feet; North 35°06'14" East, 2.83 feet; North 18°27'25" East, 52.51 feet; North 28°37'30" East, 82.46 feet; North 42°09'01" East, 77.31 feet; North 31°21'30" East, 65.58 feet; North 02°52'56" East, 82.04 feet; North 06°20'26" East, 20.38 feet; North 06°19'33" East, 103.26 feet; North 12°38'06" East, 81.15 feet; thence again along the Provo / Orem Boundary Adjustment of 1991 the following courses: North 24°55'47" East, 81.26 feet; North 26°52'14" East, 31.53 feet; North 26°46'04" East, 23.87 feet; North 26°59'16" East, 38.02 feet; North 22°55'38" East, 105.25 feet; North 30°24'58" East, 72.84 feet; North 45°01'41" East, 93.12 feet; North 52°58'45" East, 103.81 feet; North 47°30'20" East, 86.97 feet; North 44°35'34" East, 130.34 feet; North 45°45'03" East, 74.34 feet; North 45°47'42" East, 47.78 feet; North 46°11'49" East, 16.98 feet; North 14°51'55" East, 69.19 feet; North 05°42'12" West, 94.34 feet; North 05°32'20" West, 16.83 feet; North 05°35'31" East, 98.79 feet; North 19°23'58" East, 167.50 feet; North 12°00'09" East, 3.98 feet; North 19°30'34" East, 29.57 feet; North 16°42'00" East, 44.37 feet; North 16°43'51" East, 188.03 feet; North 13°15'15" East, 64.34 feet; North 13°28'17" East, 9.13 feet; North 88°24'33" East, 9.00 feet; thence along the York - Taylor Annexation recorded September 18 of 1989 the following courses: North 06°39'12" East, 154.29 feet; North 09°01'39" East, 85.24 feet; North 01°21'36" West, 136.92 feet; North 04°36'51" East, 51.29 feet; North 17°44'34" East, 107.88 feet; North 27°25'44" East, 48.31 feet; North 45°35'13" East, 112.35 feet; North 32°02'06" East, 92.38 feet; North 23°23'40" East, 43.45 feet; North 23°17'23" East, 178.00 feet; North 35°36'02" East, 155.04 feet; North 35°47'30" East, 24.58 feet; South 14°47'49" East, 95.93 feet; South 03°34'36" East, 46.09 feet; South 07°32'13" West, 683.35 feet; South 01°33'46" West, 252.16 feet; thence again along the Provo / Orem Boundary Adjustment of 1991 the following courses: North 88°52'09" East, 6.25 feet; South 06°08'27" East, 111.01 feet; South 10°45'08" East, 136.01 feet; South 16°24'55" East, 161.46 feet; South 24°43'34" East, 190.67 feet; South 32°09'17" East, 166.77 feet; South 42°30'32" East, 222.55 feet; South 42°32'31" East, 10.68 feet; South 6.74 feet; thence along the Jenkins Addition recorded September 21 of 1978 the following courses: South 45°30'29" East, 10.43 feet; South 46°30'11" East, 16.26 feet; South 47°05'10" East, 11.91 feet; South 47°32'23" East, 9.85 feet; South 47°57'32" East, 10.50 feet; South 48°18'49" East, 3.51 feet; South 48°27'09" East, 4.37 feet; North 00°40'11" West, 1.40 feet; North 00°39'46" West, 2.22 feet; North 00°39'49" West, 4.79 feet; South 41°52'39" East, 38.44 feet; thence along the Tanner - Hamblin Addition recorded June 29 of 1976 the following courses: North 36.57 feet; North 249.47 feet; North 3.76 feet; East 232.85 feet; thence along the Plum Tree Addition recorded September 24 of 1990 the following courses: North 01°51'34" East, 247.34 feet; North 01°51'36" East, 21.77 feet; North 40°04'40" East, 129.83 feet; thence along the BYU Motion Picture Addition recorded June 25 of 1958 the following courses: North 01°31'00" West, 68.67 feet; North 88°07'00" East, 434.71 feet; North 29°53'57" West, 118.55 feet; North 14°24'49" West, 101.44 feet; North 21°18'52"

East, 174.37 feet; North 01°16'21" East, 61.95 feet; North 18°26'46" West, 110.23 feet; North 00°39'25" West, 53.97 feet; North 15°25'26" East, 3.11 feet; thence along the Provo / Orem Boundary Adjustment recorded September 1 of 2000 the following courses: South 85°49'46" East, 71.13 feet; South 83°35'34" East, 456.09 feet; South 82°29'33" East, 65.98 feet; North 06°21'49" West, 11.64 feet; North 06°21'44" West, 25.28 feet; North 06°21'43" West, 85.85 feet; North 06°41'46" West, 148.04 feet; North 07°17'09" West, 323.46 feet; North 07°58'03" West, 165.74 feet; South 89°58'47" East, 115.27 feet; North 00°08'22" East, 150.88 feet; North 03°36'40" West, 408.52 feet; North 03°35'55" West, 214.82 feet; North 36°18'57" West, 211.10 feet; North 89°45'31" West, 151.38 feet; thence along the Country Club Addition No. 6 recorded November 20 of 1978 the following courses: North 05°19'35" West, 589.80 feet; North 33°50'01" West, 83.74 feet; South 89°35'42" West, 212.64 feet; North 01°59'02" East, 216.69 feet; North 03°01'48" West, 357.06 feet; North 02°31'33" East, 243.99 feet; North 02°23'00" East, 502.06 feet; North 87°50'11" East, 303.11 feet; thence following the Riverwest Addition recorded November 21 of 1978 the following courses: North 87°19'14" East, 25.40 feet; North 40°41'02" West, 460.23 feet; North 21°11'29" West, 58.78 feet; North 16°46'55" West, 16.45 feet; North 21°10'25" West, 93.09 feet; North 08°42'36" East, 3.81 feet; North 08°27'08" East, 351.26 feet; North 07°59'39" East, 3.59 feet; North 01°08'46" East, 93.77 feet; North 01°25'24" East, 145.98 feet; North 01°16'21" East, 232.18 feet; North 75°42'38" East, 116.74 feet; North 00°41'47" East, 72.07 feet; South 89°52'16" West, 140.01 feet; South 89°51'44" West, 52.50 feet; North 00°07'14" East, 297.52 feet; North 00°02'45" West, 778.63 feet; North 00°09'29" East, 227.13 feet; North 43°59'57" East, 604.30 feet; North 89°59'55" East, 47.38 feet; thence along the Losee Addition recorded November 13 of 1992 the following courses: North 15°56'46" West, 66.43 feet; North 01°39'11" West, 298.94 feet; South 87°47'13" West, 30.77 feet; South 87°49'20" West, 23.02 feet; North 14°13'28" West, 92.59 feet; North 19°45'16" East, 21.45 feet; North 88°50'40" West, 12.38 feet; North 14°11'44" West, 54.54 feet; North 15°46'08" East, 116.84 feet; North 15°48'20" East, 90.87 feet; North 02°53'36" East, 7.45 feet; North 02°40'18" East, 16.08 feet; ~~South 89°23'18" West, 527.81 feet; North 03°07'47" West, 32.05 feet; North 03°07'08" West, 22.97 feet; North 03°08'09" West, 13.71 feet; North 16°14'36" West, 115.75 feet; South 87°38'34" West, 89.71 feet; North 02°19'38" West, 80.00 feet; North 04°40'24" East, 164.17 feet; North 22°29'13" East, 244.80 feet; North 04°41'22" East, 342.53 feet; South 87°29'22" West, 79.96 feet; North 16°06'17" East, 273.10 feet; North 32°48'38" West, 29.30 feet; South 55°33'40" West, 58.36 feet; South 74°54'53" West, 48.03 feet; North 14°20'59" West, 5.55 feet; North 15°06'40" West, 25.90 feet; North 74°58'07" East, 41.94 feet; along a curve to the left with chord bearing North 60°45'48" East, 55.57 feet; North 46°02'21" East, 102.46 feet; along a curve to the left with chord bearing North 24°20'57" East, 105.51 feet; North 02°52'21" East, 227.04 feet; North 11°33'53" East, 63.60 feet; along a curve to the right with chord bearing North 27°26'46" East, 81.91 feet; North 43°13'19" East, 85.43 feet; North 43°12'49" East, 113.37 feet; along a curve to the left with chord bearing North 29°32'19" East, 38.79 feet; North 15°38'07" East, 135.91 feet; North 07°26'45" East, 79.10 feet; South 87°46'06" West, 61.05 feet; North 20°41'06" East, 130.94 feet; South 69°33'12" East, 23.61 feet; North 17°35'31" East, 33.50 feet; North 20°02'44" East, 79.51 feet; North 61°35'19" East, 201.25 feet; North 82°43'14" East, 80.91 feet; thence along the Provo River Annexation recorded May 22 of 1978 the following courses: North 00°50'33" West, 272.03 feet; North 32°47'50" East, 142.16 feet; North 01°50'48" East, 271.58 feet; North 17°49'06" East, 157.69 feet; North 03°55'51" East, 85.70 feet; North 26°41'09" East, 107.17 feet; North 10°30'03" West, 209.19 feet; North 25°11'26" West, 132.75 feet; North 10°17'06" West, 128.12 feet; North 09°23'10" East, 137.21 feet; North 00°30'28" East, 126.94 feet; North 35°51'51" East, 227.67 feet; North 27°38'34" East, 171.09 feet; North 40°25'46" East, 148.62 feet; North 14°43'58" East, 122.40 feet; North 03°33'35" East, 263.76 feet; North 15°32'28" East, 293.94 feet; North 30°11'56" East, 109.85 feet; North 15°15'01" East, 272.80 feet; North 36°34'57" East, 186.26 feet; North 25°37'12" East, 233.60 feet; North 21°43'29" East, 154.00 feet; North 13°31'04" East, 209.11 feet; North 25°26'47" East, 184.46 feet; North 44°59'33" East, 299.16 feet; North 48°14'58" East, 42.90 feet; North 48°08'05" East, 39.62 feet; North 25°57'07" East, 1278.02 feet; South 25°26'43" East, 630.19 feet; North 89°59'56" East, 413.52 feet; South 00°52'57" East, 632.95 feet; thence along the Hintze - Edgewood Annexation recorded July 3 of 1978 the following courses: East 6.75 feet; North 89°59'56" East, 162.13 feet; North 89°59'56" East, 436.77 feet; North 01°51'06" West, 108.31 feet; North 05°55'06" West, 223.07 feet; North 11°45'39" West, 328.71 feet; North 10°07'13" West, 329.38 feet; North 08°42'01" West, 58.50 feet; North 06°26'17" West, 64.66 feet; North 02°45'44" East, 57.07 feet; North 09°54'10" East, 52.34 feet; North 12°48'23" East, 224.46 feet; North 15°44'29" East, 283.38 feet; North 16°01'08" East, 242.81 feet; North 23°41'28" East, 186.67 feet; North 22°08'53" East, 223.16 feet; North 27°33'01" East, 86.22 feet; North 29°56'17" East, 74.15 feet; North 32°40'50" East, 80.57 feet; North 36°57'13" East, 68.83 feet; North 38°16'47" East, 76.28 feet; North 40°27'11" East, 46.82 feet; North 88°41'36" East, 260.58 feet; North 88°41'25" East, 1316.41 feet; North 01°07'07" West, 1395.46 to the North Quarter Corner of Section 7, Township 6 South, Range 3 East; thence along the Provo Canyon Addition recorded February 8 of 1982 the following courses: North 01°30'11" West, 552.76 feet; North 43°01'42" East, 5.13 feet; North 42°36'51" East, 252.58 feet; North~~

53°32'31" East, 236.87 feet; North 60°07'54" East, 964.25 feet; North 54°27'30" East, 284.83 feet; North 49°55'06" East, 205.70 feet; North 31°59'36" East, 312.39 feet; North 25°10'05" East, 603.77 feet; North 20°43'19" East, 655.01 feet; North 35°31'59" East, 142.39 feet; North 63°27'36" East, 129.67 feet; North 86°48'21" East, 149.24 feet; South 85°25'27" East, 207.55 feet; North 87°16'57" East, 174.08 feet; North 80°32'02" East, 402.88 feet; North 89°59'56" East, 140.76 feet; South 55°30'08" East, 160.78 feet; South 40°02'22" East, 270.29 feet; South 38°24'38" East, 124.75 feet; South 64°04'51" East, 79.50 feet; South 75°22'26" East, 196.76 feet; North 89°59'56" East, 298.14 feet; South 86°31'52" East, 273.64 feet; North 78°41'12" East, 253.31 feet; North 72°00'54" East, 646.37 feet; North 74°14'30" East, 136.25 feet; South 449.44 feet; North 89°34'13" West, 141.39 feet; South 33°53'28" West, 99.31 feet; South 29°13'42" West, 350.22 feet; along a curve to the right with chord bearing South 52°02'24" West, 157.60 feet; South 74°53'24" West, 110.06 feet; along a curve to the left with chord bearing North 04°06'54" East, 113.23 feet; South 89°34'20" East, 1035.08 feet; South 24°11'23" East, 732.78 feet; South 88°40'30" East, 99.91 feet; South 00°37'23" East, 1286.65 feet; South 89°02'58" East, 1320.62 feet; South 00°04'53" East, 1314.32 feet; South 89°11'19" West, 2625.15 feet; South 87°32'54" West, 2596.01 feet; South 01°24'37" East, 1401.43 feet; North 89°33'29" West, 2634.59 feet; thence again along the said Hintze – Edgewood Annexation the following courses: South 01°06'59" East, 1968.95 feet; South 89°59'56" West, 1069.68 feet; North 11°57'07" West, 35.01 feet; North 58°37'50" West, 30.01 feet; North 73°57'14" West, 72.58 feet; South 75°49'35" West, 253.74 feet; South 7.81 feet; South 89°59'56" West, 469.90 feet; South 05°00'01" West, 658.32 feet; South 10°15'04" West, 354.21 feet; thence along The Arbors Annexation recorded on November 23 of 2005 the following courses: South 50°15'12" East, 93.15 feet; South 00°00'10" East, 22.09 feet; North 83°52'39" East, 158.66 feet; South 03°56'11" East, 85.37 feet; South 85°41'48" West, 113.71 feet; South 02°59'47" West, 3.50 feet; South 10°38'44" West, 86.35 feet; South 03°23'26" East, 30.36 feet; North 86°36'13" East, 2.56 feet; South 02°55'43" East, 53.08 feet; thence along the Fitzgerald Addition recorded July 31 of 1984 the following courses: ~~North 89°33'12" East, 115.86 feet; South 05°49'54" East, 359.24 feet; thence along the Provo Canyon Road~~ Addition recorded June 2 of 1994 the following courses: North 89°20'24" East, 38.13 feet; South 05°49'57" East, 116.86 feet; North 88°48'58" East, 508.76 feet; North 05°30'47" West, 200.37 feet; North 88°49'01" East, 478.75 feet; North 32°14'29" East, 98.65 feet; North 60°02'44" East, 69.98 feet; North 19°43'12" West, 30.01 feet; North 54°45'46" West, 50.05 feet; North 74°40'37" West, 53.92 feet; North 22°24'48" East, 84.92 feet; North 89°14'52" East, 576.96 feet; South 12°12'24" East, 320.43 feet; South 87°43'03" West, 408.22 feet; North 87°25'21" West, 273.66 feet; South 01°14'25" East, 277.13 feet; South 89°16'54" West, 968.88 feet; South 05°52'57" East, 76.84 feet; thence along the Loveless Annexation recorded January 25 of 2005, South 04°12'52" East, 332.36 feet; thence along the Gillespie Family Inc Annexation recorded July 3 of 1979 the following courses: South 05°43'55" East, 101.38 feet; South 89°39'34" East, 20.88 feet; thence along the Don Dean Addition recorded May 9 of 1990 the following courses: South 89°45'20" East, 335.52 feet; South 89°46'03" East, 935.31 feet; thence along the Elliott Addition recorded January 15 of 1985 the following courses: North 00°28'25" West, 136.07 feet; North 00°43'39" East, 88.69 feet; North 89°59'26" East, 328.26 feet; North 313.44 feet; North 89°59'56" East, 349.77 feet; North 259.25 feet; North 89°59'56" East, 969.93 feet; South 267.19 feet; thence along the Heppler Addition recorded March 13 of 1992 the following courses: North 88°32'20" East, 1982.12 feet; South 00°46'22" East, 1260.19 feet; thence along the Sherwood Hills Addition recorded April 3 of 1975 the following courses: North 89°44'25" East, 692.42 feet; South 00°16'43" East, 2824.49 feet; thence along the Bastion Addition recorded August 17 of 1972 the following courses: South 00°37'04" East, 2641.49 feet; South 89°45'14" West, 657.92 feet; thence along the Radmall Annexation recorded March 10 of 1992 the following courses: South 01°25'34" East, 125.54 feet; South 01°17'50" East, 22.07 feet; thence along the Terrace View Addition recorded December 19 of 1961 the following courses: South 33°03'57" East, 155.57 feet; South 02°31'51" West, 430.36 feet; South 04°01'35" West, 461.14 feet; South 35°06'30" East, 12.61 feet; South 13°30'46" West, 256.80 feet; North 87°48'04" West, 317.50 feet; thence along the Thousand Oaks Addition No. 1 recorded February 11 of 1971 the following courses: South 26°58'29" West, 19.57 feet; South 27°12'50" West, 103.88 feet; thence along the Vetterli Addition recorded September 20 of 1979 the following courses: North 89°59'56" East, 287.02 feet; South 03°06'53" East, 112.73 feet; thence along the Richard L. Stone Addition recorded May 25 of 1978 the following courses: North 89°59'57" East, 25.13 feet; South 03°08'13" East, 185.03 feet; thence along the Thousand Oaks Addition No. 2 recorded August 19 of 1975 the following courses: North 89°59'56" East, 234.14 feet; South 04°59'53" East, 198.00 feet; South 32°59'15" East, 239.93 feet; South 12°46'55" East, 442.40 feet; thence along the Green Bench Addition recorded September 22 of 1958 the following courses: North 89°42'08" East, 313.90 feet; South 00°41'19" East, 758.81 feet; thence along the Rolling Knolls Addition recorded April 10 of 1980 the following courses: South 24°27'25" East, 634.98 feet; South 24°28'08" East, 14.49 feet; thence along the Rock Canyon No. 3 Annexation recorded May 28 of 1981 the following courses: North 89°59'56" East, 394.14 feet; South 00°01'40" West, 1305.63 feet; thence along the Joseph K. Allen Addition No. 2 recorded February

26 of 1986, North 89°35'38" East, 689.93 feet; thence again along the Heritage Mountain Ski Area Annexation, North 89°35'39 East, 2689.58 feet to the point of beginning.

SPRINGVILLE CITY, UTAH
BOUNDARY DESCRIPTION

Commencing at the West Quarter Corner of Section 27, Township 7 South, Range 3 East, Salt Lake Base and Meridian; thence along the Limewood Hills Addition recorded October 7 of 1976 the following courses: North 89°35'50" East, 1345.48 feet; South 00°31'16" East, 1331.70 feet; South 89°35'32" West, 756.56 feet; thence along the Theron S. Hall Addition recorded July 7 of 1958 the following courses: South 34°49'32" East, 38.53 feet; South 34°53'02" East, 1576.56 feet; thence along the Corporate Limits Restriction recorded June 22 of 1900 the following courses: North 89°35'46" East, 1190.34 feet; South 89°06'22" East, 1245.09 feet; South 01°03'38" West, 1649.13 feet; thence along the Spring Oaks Addition recorded July 16 of 1973 the following courses: South 88°05'09" East, 697.68 feet; South 36°55'17" East, 69.50 feet; South 01°43'47" East, 642.43 feet; South 01°43'47" East, 284.89 feet; South 88°51'06" East, 302.30 feet; South 88°51'06" East, 317.99 feet; North 89°35'03" East, 1319.60 feet; South 00°25'14" East, 1309.13 feet; thence along the Cherrington Heights Annexation recorded December 8 of 2006 the following courses: North 89°52'40" East, 325.99 feet; South 24°09'46" East, 294.27 feet; South 31°33'40" East, 221.69 feet; South 26°45'06" East, 268.25 feet; South 15°08'19" East, 99.22 feet; South 18°27'09" West, 139.16 feet; South 21°04'37" West, 138.58 feet; South 17°05'40" East, 292.97 feet; thence along the Canyon View Annexation recorded January 15 of 1980 the following courses: South 89°47'01" East, 672.46 feet; South 00°46'36" East, 1363.91 feet; North 89°27'54" East, 770.70 feet; North 89°59'58" East, 195.64 feet; South 88°51'08" East, 140.29 feet; thence along the East Bench Addition recorded December 17 of 1985 the following courses: East 162.89 feet; North 738.77 feet; North 89°59'49" East, 1423.08 feet; South 1977.93 feet; East 3962.34 feet; South 1284.66 feet; South 00°00'07" West, 34.94 feet; West 2707.52 feet; North 28°46'44" West, 30.38 feet; North 28°57'50" West, 48.79 feet; West 2.89 feet; thence along the Boundary Adjustment Ordinance recorded March 31 of 1999 the following courses: North 00°00'10" East, 14.96 feet; South 74°27'14" West, 55.81 feet; thence again along the East Bench Addition, South 89°59'57" West, 74.26 feet; thence along the Bartholomew Annexation recorded February 12 of 2007 the following courses: South 22°50'59" East, 18.37 feet; South 74°27'12" West, 113.38 feet; thence along the Boundary Adjustment Ordinance recorded April 1 of 1999 the following courses: North 88°57'54" East, 6.68 feet; South 74°27'12" West, 181.42 feet; South 83°41'37" West, 62.71 feet; South 88°29'36" West, 281.64 feet; South 82°34'09" West, 161.24 feet; thence along the Bradford Addition recorded April 23 of 2002 the following courses: South 45°46'12" East, 1.94 feet; South 82°12'20" West, 455.57 feet; North 89°53'11" West, 5.64 feet; South 00°53'56" East, 428.97 feet; North 75°23'30" West, 70.09 feet; North 78°47'52" West, 50.45 feet; North 88°21'03" West, 73.13 feet; South 77°49'04" West, 46.44 feet; South 62°13'46" West, 36.53 feet; South 68°45'32" West, 30.60 feet; South 82°15'43" West, 46.39 feet; North 83°02'15" West, 45.17 feet; North 88°25'56" West, 43.11 feet; North 87°48'34" West, 41.42 feet; South 74°20'55" West, 44.59 feet; South 67°44'59" West, 44.33 feet; North 00°42'53" West, 81.83 feet; North 38°03'08" West, 32.37 feet; South 55°55'48" West, 120.07 feet; South 79°36'03" West, 64.62 feet; North 55°41'37" West, 70.78 feet; North 24°00'27" West, 59.43 feet; thence again along the said Boundary Adjustment Ordinance the following courses: North 27°28'10" West, 75.94 feet; North 48°17'44" West, 89.93 feet; thence again along the said Bradford Addition, North 65°55'44" West, 83.43 feet; thence along the D. Witney Addition recorded April 26 of 1994 the following courses: North 70°48'12" West, 145.60 feet; South 55°48'12" West, 129.22 feet; South 69°14'20" West, 126.60 feet; North 63°07'08" West, 171.54 feet; South 85°34'23" West, 67.21 feet; North 89°13'30" West, 69.26 feet; South 82°03'25" West, 10.86 feet; thence again along the said Boundary Adjustment Ordinance the following courses: South 68°43'05" West, 77.09 feet; South 61°16'58" West, 202.58 feet; South 38°06'12" West, 53.39 feet; South 74°41'56" West, 176.66 feet; South 87°55'04" West, 120.91 feet; South 65°20'07" West, 188.80 feet; South 73°17'23" West, 110.06 feet; North 55°00'52" West, 92.11 feet; North 33°32'24" West, 68.07 feet; North 77°24'06" West, 145.59 feet; North 78°13'55" West, 88.20 feet; North 58°21'39" West, 79.63 feet; North 58°42'11" West, 57.66 feet; South 81°09'53" West, 106.53 feet; South 83°23'03" West, 91.33 feet; North 61°18'10" West, 75.98 feet; North 83°44'35" West, 58.58 feet; South 75°18'41" West, 36.38 feet; North 88°07'16" West, 29.79 feet; South 81°16'04" West, 29.71 feet; South 85°05'07" West, 74.06 feet; North 81°16'15" West, 96.20 feet; North 88°31'55" West, 91.53 feet; South 75°52'16" West, 87.56 feet; South 74°25'55" West, 110.01 feet; South 74°25'54" West, 61.51 feet; thence along the Boundary Adjustment recorded May 8 of 1997 the following courses: South 52°43'08" West, 50.79 feet; South 68°32'11" West, 169.11 feet; North 48°28'44" West, 50.25 feet; North 60°39'42" West, 85.47 feet; North 46°35'08" West, 49.56 feet; North 62°47'16" West, 59.32 feet; North 89°10'20" West, 73.51 feet; North 88°43'50" West, 31.01 feet; North 88°54'38" West, 236.56

feet; North 77°21'40" West, 21.14 feet; North 4.12 feet; North 77°17'11" West, 102.52 feet; North 38°07'45" West, 75.72 feet; South 01°10'50" West, 18.19 feet; North 68°30'29" West, 157.46 feet; South 82°20'18" West, 31.41 feet; North 68°54'23" West, 45.15 feet; thence again along the Boundary Adjustment Ordinance of 1999 the following courses: North 68°57'08" West, 138.85 feet; North 01°12'46" West, 148.59 feet; thence along the Brookwood South Addition recorded July 5 of 2005 the following courses: North 15°51'07" West, 72.14 feet; along a curve to the left with chord bearing North 34°44'55" West, 97.13 feet; North 54°06'23" West, 2.57 feet; along a curve to the right with chord bearing North 42°29'08" West, 42.04 feet; North 30°20'53" West, 32.75 feet; along a curve to the left with chord bearing North 46°24'10" West, 55.30 feet; North 62°27'27" West, 25.82 feet; North 63°18'55" West, 47.79 feet; thence along the Brookwood Addition recorded May 25 of 1995 the following courses: South 89°45'20" West, 23.57 feet; North 61°11'09" West, 2.85 feet; North 60°16'12" West, 98.18 feet; North 48°58'55" West, 112.66 feet; along a curve to the right with chord bearing North 41°20'30" West, 26.31 feet; North 33°51'20" West, 60.36 feet; along a curve to the left with chord bearing North 49°02'39" West, 26.32 feet; North 64°27'35" West, 31.31 feet; along a curve to the left with chord bearing North 81°34'10" West, 28.56 feet; South 80°49'07" West, 83.83 feet; thence along the Winget Annexation recorded March 6 of 1989 the following courses: South 60°07'36" East, 113.31 feet; South 14°09'34" West, 164.05 feet; South 14°07'33" West, 38.93 feet; North 59°59'16" West, 52.98 feet; North 11.00 feet; North 00°00'04" East, 58.82 feet; South 89°59'57" West, 165.01 feet; South 00°57'43" West, 59.57 feet; South 89°45'21" West, 102.88 feet; thence along the Stewart Addition recorded October 4 of 1977, South 89°44'30" West, 250.02 feet; thence along the Creek Addition recorded June 15 of 1976 the following courses: South 89°44'31" West, 660.33 feet; South 89°44'31" West, 92.03 feet; thence along the Boundary Adjustment Ordinance recorded July 18 of 2003 the following courses: North 03°10'41" West, 10.83 feet; North 00°52'12" West, 7.41 feet; South 89°36'10" West, 30.89 feet; West 49.09 feet; North 00°51'44" West, 11.91 feet; South 89°59'58" West, 100.03 feet; along a curve to the left with chord bearing South 06°01'42" East, 12.89 feet; South 0.76 feet; South 11°17'40" East, 2.45 feet; along a curve to the left with chord bearing South 11°37'17" East, 14.87 feet; thence again along the said Creek Addition, South 89°44'32" West, 53.25 feet; thence along the Clyde Park Boundary Adjustment recorded January 2 of 2007 the following courses: South 00°35'47" West, 224.76 feet; West 250.88 feet; North 00°56'52" West, 223.17 feet; thence again along the said Creek Addition the following courses: South 89°44'02" West, 212.62 feet; South 89°46'20" West, 110.63 feet; thence along the Del Nene East Annexation recorded March 6 of 1979 the following courses: South 67°04'43" West, 27.28 feet; South 70°57'09" West, 158.96 feet; South 85°52'36" West, 26.95 feet; South 88°36'49" West, 186.06 feet; South 85°15'10" West, 67.99 feet; South 83°59'22" West, 161.77 feet; North 86°26'18" West, 1.00 feet; thence along the Seal Addition recorded March 20 of 1979, North 89°56'38" West, 441.15 feet; thence along the Kennedy Addition recorded March 20 of 1979 the following courses: South 4.44 feet; South 30°21'50" West, 109.31 feet; North 89°15'07" West, 267.91 feet; North 83°24'09" West, 129.99 feet; North 09°14'41" West, 119.05 feet; North 00°45'35" East, 47.25 feet; thence again along the Creek Addition, South 89°42'51" West, 188.26 feet; thence along the Seventh East & Tenth South Addition recorded May 19 of 1952 the following courses: South 89°59'58" West, 630.78 feet; South 00°00'03" West, 148.44 feet; North 88°45'37" West, 190.56 feet; thence along the Sumsion Addition recorded May 3 of 1977 the following courses: South 00°11'44" West, 110.13 feet; South 00°13'50" West, 653.89 feet; thence along the Woodward Addition recorded February 1 of 1983 the following courses: South 00°26'06" East, 197.32 feet; West 172.26 feet; thence along the Springville – Mapleton Boundary Adjustment recorded November 12 of 1996 the following courses: South 00°15'20" East, 475.45 feet; South 89°42'15" West, 109.13 feet; thence again along the Sumsion Addition, South 89°38'50" West, 386.28 feet; thence again along the Corporate Limits Restriction, South 89°38'30" West, 440.53 feet; thence along the Quail Hollow Addition recorded February 7 of 1978, South 02°01'21" West, 177.18 feet; thence along the Evergreen Cemetery Annexation recorded February 5 of 1980 the following courses: South 23°46'38" East, 168.97 feet; South 30°45'51" East, 282.51 feet; South 44°39'04" East, 123.09 feet; South 32°59'44" East, 557.34 feet; South 32°58'33" East, 247.35 feet; North 87°51'52" West, 28.52 feet; South 00°19'36" East, 678.09 feet; South 89°48'21" West, 628.66 feet; South 88°55'16" West, 59.76 feet; thence along the Hidden Ridge Annexation recorded February 4 of 1998 the following courses: South 01°10'02" East, 650.15 feet; South 88°42'22" West, 16.63 feet; South 88°45'55" West, 351.10 feet; South 89°35'42" West, 557.92 feet; South 00°31'34" East, 1318.96 feet; South 89°31'04" West, 404.21 feet; thence along the Fern Hanson Annexation recorded October 21 of 2003 the following courses: South 00°19'17" East, 304.51 feet; South 89°37'54" West, 309.27 feet; thence again along the Hidden Ridge Annexation the following courses: South 00°21'39" East, 409.44 feet; South 89°57'30" West, 697.79 feet; North 00°37'49" West, 658.37 feet; South 89°44'21" West, 288.64 feet; North 31°00'57" East, 834.08 feet; North 31°11'28" East, 681.17 feet; North 30°57'43" East, 637.11 feet; North 30°38'32" East, 283.54 feet; South 62°45'13" East, 51.74 feet; North 29°55'33" East, 281.40 feet; North 30°13'45" East, 125.15 feet; North 61°23'03" West, 43.72 feet; North 31°51'10" East, 142.60 feet; thence again along the said Evergreen Cemetery Annexation, North 31°15'05" East, 917.82 feet; thence again along the said Quail Hollow

Addition the following courses: North 27°55'08" East, 138.57 feet; North 27°06'54" East, 110.80 feet; North 24°35'30" East, 113.55 feet; North 22°52'24" East, 134.11 feet; North 19°40'26" East, 203.11 feet; North 16°05'41" East, 86.58 feet; thence again along the said Corporate Limits Restriction the following courses: South 89°38'25" West, 658.05 feet; South 89°38'57" West, 398.91 feet; thence along the Venice P. Beals Annexation recorded April 1 of 1975, South 29°04'52" West, 287.29 feet; thence along the Miner and Bird Addition recorded May 4 of 1976, South 29°04'07" West, 376.42 feet; thence along the South Springville Annexation recorded January 23 of 1990 the following courses: South 29°26'03" West, 5479.91 feet; South 89°31'47" West, 1851.79 feet; South 89°31'08" West, 1326.49 feet; North 00°04'23" West, 2136.73 feet; North 55°11'48" East, 371.77 feet; North 33°13'08" West, 16.88 feet; North 54°49'27" East, 533.90 feet; South 89°33'35" West, 733.06 feet; North 00°07'19" West, 642.26 feet; South 45°38'03" West, 460.07 feet; South 74°52'55" West, 1043.68 feet; North 00°19'15" West, 89.07 feet; North 24°11'56" East, 683.45 feet; North 05°59'57" East, 283.50 feet; North 22°39'31" East, 256.36 feet; North 82°39'48" West, 415.45 feet; North 00°23'27" West, 219.51 feet; North 45°00'23" East, 477.98 feet; North 55°00'17" West, 145.97 feet; North 00°18'20" West, 514.58 feet; thence along the Mecham Annexation recorded December 22 of 1999, West 943.93 feet; thence along the West Fields Addition recorded June 4 of 2003, North 83°49'39" West, 58.23 feet; thence along the Freeway Annexation recorded December 31 of 1987 the following courses: West 1117.06 feet; North 44°34'56" West, 187.70 feet; North 89°10'54" West, 603.34 feet; along a curve to the right with chord bearing North 44°22'30" West, 105.28 feet; North 00°25'00" East, 1222.93 feet; thence along the Brown Brothers Annexation recorded July 11 of 1988 the following courses: North 89°54'33" West, 235.51 feet; South 89°59'58" West, 728.41 feet; North 00°44'59" East, 640.63 feet; thence along the Crandall Annexation recorded February 18 of 1999 the following courses: North 00°18'28" East, 816.46 feet; North 00°18'58" East, 522.18 feet; thence along the Crandall West Annexation recorded November 2 of 2000 the following courses: North 88°26'57" West, 652.70 feet; North 00°18'48" East, 2.25 feet; North 88°15'01" West, 12.85 feet; North 01°03'57" West, 205.68 feet; North 00°09'57" West, 148.73 feet; South 88°42'03" East, 9.66 feet; North 00°26'03" East, 378.46 feet; North 89°06'03" West, 295.64 feet; North 88°42'02" West, 540.00 feet; North 89°42'01" West, 185.59 feet; South 88°31'58" West, 1521.28 feet; North 46°51'25" West, 11.84 feet; North 46°51'12" West, 49.55 feet; North 46°51'12" West, 117.46 feet; North 59°50'48" West, 68.74 feet; North 59°50'44" West, 89.76 feet; North 59°50'47" West, 84.50 feet; North 59°50'40" West, 17.52 feet; North 41°35'21" West, 30.86 feet; North 41°35'18" West, 159.77 feet; North 00°00'03" East, 618.88 feet; South 88°44'33" West, 464.88 feet; South 88°15'35" West, 665.62 feet; South 89°59'58" West, 663.69 feet; North 7.59 feet; North 00°00'03" East, 931.79 feet; North 00°16'41" West, 2070.20 feet; West 24.75 feet; North 00°15'57" West, 1029.31 feet; North 00°00'03" East, 1349.31 feet; North 00°40'02" East, 2128.05 feet; South 74°49'50" West, 1391.77 feet; North 00°02'47" East, 898.41 feet; North 89°14'17" East, 4594.25 feet; South 00°55'03" West, 46.19 feet; North 89°59'57" East, 709.03 feet; thence again along the Freeway Annexation the following courses: North 00°00'03" East, 2739.51 feet; North 89°59'57" East, 759.04 feet; South 89°59'42" East, 1847.10 feet; North 87°12'35" East, 525.28 feet; North 19°42'52" East, 85.98 feet; North 40°40'58" West, 849.32 feet; North 00°00'03" East, 999.58 feet; North 89°59'57" East, 557.03 feet; North 00°00'03" East, 364.57 feet; North 89°59'57" East, 1676.58 feet; thence along the City Pasture Addition recorded December 18 of 1967 the following courses: South 85°25'51" East, 43.14 feet; South 85°28'14" East, 331.55 feet; South 89°47'01" East, 2669.16 feet; South 88°47'07" East, 627.67 feet; thence along the Springville Industrial Park Annexation recorded February 7 of 1984 the following courses: North 15°18'52" West, 21.77 feet; South 88°47'09" East, 129.66; South 22°01'59" East, 2223.55 feet; South 22°01'19" East, 730.43 feet; thence along the Springville North Island Annexation recorded October 1 of 1985 the following courses: North 82°37'25" East, 14.12 feet; South 63°45'50" East, 78.46 feet; South 78°13'10" East, 394.58 feet; South 80°02'43" East, 775.47 feet; South 88°47'53" East, 494.26 feet; South 00°19'27" East, 22.13 feet; thence along the Bryce L. Thorn Annexation recorded June 19 of 1984 the following courses: South 88°48'16" East, 149.66 feet; North 00°20'29" West, 460.40 feet; South 89°50'10" East, 826.55 feet; South 89°48'48" East, 76.38 feet; thence along the North Addition Annexation recorded November 29 of 1995 the following courses: North 33.63 feet; North 12°36'12" West, 1883.03 feet; East 1146.69 feet; South 162.75 feet; South 701.01 feet; thence along the Strong Company Addition recorded March 28 of 1996 the following courses: South 00°15'42" West, 164.57 feet; South 286.38 feet; thence again along the North Addition Annexation the following courses: South 35°14'18" East, 878.10 feet; South 21°12'09" East, 695.06 feet; South 21°35'29" East, 804.39 feet; South 00°36'14" West, 558.23 feet; North 89°41'24" East, 1597.61 feet to the point of beginning.

MAPLETON CITY, UTAH
BOUNDARY DESCRIPTION

COMMENCING AT THE NORTHEAST CORNER OF SECTION 26, TOWNSHIP 8 SOUTH, RANGE 3 EAST,
SALT LAKE BASE AND MERIDIAN;

THENCE SOUTH 00°30'32" WEST, 2697.30 FEET;
 THENCE SOUTH 00°29'27" WEST, 1350.23 FEET;
 THENCE SOUTH 89°11'00" WEST, 1274.96 FEET;
 THENCE SOUTH 00°29'23" WEST, 1348.93 FEET;
 THENCE SOUTH 00°19'55" EAST, 1380.68 FEET;
 THENCE SOUTH 89°45'20" WEST, 1147.87 FEET;
 THENCE NORTH 01°48'04" WEST, 20.95 FEET;
 THENCE SOUTH 89°53'53" WEST, 1319.96 FEET;
 THENCE NORTH 00°45'12" WEST, 2667.54 FEET;
 THENCE NORTH 00°50'44" WEST, 982.25 FEET;
 THENCE NORTH 88°36'07" WEST, 1237.39 FEET;
 THENCE SOUTH 01°29'25" WEST, 903.89 FEET;
 THENCE SOUTH 01°23'53" WEST, 110.39 FEET;
 THENCE SOUTH 89°53'53" WEST, 2703.21 FEET;
 THENCE SOUTH 00°11'26" EAST, 1323.08 FEET;
 THENCE SOUTH 00°35'06" WEST, 118.90 FEET;
 THENCE NORTH 87°33'29" WEST, 370.19 FEET;
 THENCE NORTH 05°33'07" WEST, 886.31 FEET;
 THENCE SOUTH 89°59'31" WEST, 164.54 FEET;
 THENCE NORTH 02°45'19" WEST, 362.84 FEET;
 THENCE NORTH 06°44'18" WEST, 724.03 FEET;
 THENCE NORTH 14°43'18" WEST, 798.37 FEET;
 THENCE NORTH 89°25'02" EAST, 62.07 FEET;
 THENCE NORTH 18°22'31" WEST, 23.62 FEET;
 THENCE NORTH 19°47'26" WEST, 75.88 FEET;
 THENCE NORTH 19°01'54" WEST, 75.88 FEET;
 THENCE NORTH 20°19'48" WEST, 0.87 FEET;
 THENCE NORTH 87°55'08" EAST, 664.83 FEET;
 THENCE NORTH 00°00'34" WEST, 1079.86 FEET;
 THENCE NORTH 89°29'50" EAST, 245.69 FEET;
 THENCE NORTH 00°10'55" WEST, 84.86 FEET;
 THENCE NORTH 89°21'33" EAST, 2654.89 FEET;
 THENCE NORTH 00°03'09" WEST, 1350.35 FEET;
 THENCE SOUTH 89°18'00" WEST, 2654.69 FEET;
 THENCE NORTH 00°16'58" WEST, 1340.14 FEET;
 THENCE SOUTH 89°18'28" WEST, 1340.95 FEET;
 THENCE SOUTH 00°07'03" EAST, 666.84 FEET;
 THENCE SOUTH 89°26'51" WEST, 1342.91 FEET;
 THENCE NORTH 12°49'27" WEST, 70.98 FEET;
 THENCE NORTH 26°58'03" WEST, 665.07 FEET;
 THENCE SOUTH 89°39'16" WEST, 20.76 FEET;
 THENCE NORTH 28°07'34" WEST, 693.89 FEET;
 THENCE NORTH 00°00'04" EAST, 84.78 FEET;
 THENCE NORTH 28°20'17" WEST, 3794.12 FEET;
 THENCE SOUTH 89°57'30" EAST, 2470.13 FEET;
 THENCE NORTH 00°17'19" WEST, 915.99 FEET;
 THENCE SOUTH 88°34'42" WEST, 1449.33 FEET;
 THENCE NORTH 00°36'54" WEST, 628.54 FEET;

THENCE SOUTH 87°06'03" WEST, 15.13 FEET;
THENCE NORTH, 22.06 FEET;
THENCE SOUTH 87°44'59" WEST, 1726.67 FEET;
THENCE NORTH 28°00'01" WEST, 504.90 FEET;
THENCE NORTH 24°00'11" WEST, 352.40 FEET;
THENCE NORTH 41°45'04" EAST, 198.01 FEET;
THENCE NORTH 88°44'59" EAST, 52.63 FEET;
THENCE NORTH 66°39'01" EAST, 219.02 FEET;
THENCE NORTH 46°53'06" EAST, 40.10 FEET;
THENCE NORTH 46°49'13" EAST, 658.33 FEET;
THENCE NORTH 46°49'11" EAST, 52.71 FEET;
THENCE NORTH 46°51'07" EAST, 678.63 FEET;
THENCE NORTH 87°37'49" EAST, 72.23 FEET;
THENCE NORTH 32°03'08" EAST, 66.30 FEET;
THENCE NORTH 13°33'51" WEST, 16.53 FEET;
THENCE NORTH 46°42'41" EAST, 431.02 FEET;
THENCE SOUTH 83°21'56" WEST, 957.88 FEET;
THENCE NORTH 00°03'26" WEST, 248.27 FEET;
THENCE NORTH 00°02'06" WEST, 200.69 FEET;
THENCE NORTH 00°00'03" EAST, 26.88 FEET;
THENCE NORTH 00°03'28" WEST, 1101.67 FEET;
~~THENCE NORTH 00°31'50" WEST, 1348.43 FEET;~~
THENCE NORTH 00°31'34" WEST, 1319.36 FEET;
THENCE NORTH 00°50'28" WEST, 8.50 FEET;
THENCE NORTH 89°46'30" EAST, 1293.25 FEET;
THENCE NORTH 01°09'19" WEST, 6.19 FEET;
THENCE NORTH 00°28'23" WEST, 650.12 FEET;
THENCE NORTH 88°46'24" EAST, 8.76 FEET;
THENCE NORTH 88°55'13" EAST, 59.78 FEET;
THENCE NORTH 89°48'21" EAST, 628.85 FEET;
THENCE NORTH 00°19'36" WEST, 678.29 FEET;
THENCE SOUTH 87°51'55" EAST, 28.53 FEET;
THENCE NORTH 32°58'33" WEST, 247.43 FEET;
THENCE NORTH 32°59'44" WEST, 557.50 FEET;
THENCE NORTH 44°39'04" WEST, 123.12 FEET;
THENCE NORTH 30°45'51" WEST, 282.59 FEET;
THENCE NORTH 23°46'39" WEST, 169.02 FEET;
THENCE NORTH 03°57'03" EAST, 1.82 FEET;
THENCE NORTH 00°31'31" WEST, 177.06 FEET;
THENCE NORTH 89°32'41" EAST, 7.88 FEET;
THENCE NORTH 89°38'30" EAST, 440.66 FEET;
THENCE NORTH 88°14'53" EAST, 6.13 FEET;
THENCE NORTH 89°38'50" EAST, 386.39 FEET;
THENCE NORTH 89°42'15" EAST, 109.17 FEET;
THENCE NORTH 00°15'20" WEST, 475.60 FEET;
THENCE EAST, 172.31 FEET;
THENCE NORTH 00°26'06" WEST, 197.38 FEET;
THENCE SOUTH 88°32'41" EAST, 14.76 FEET;
THENCE NORTH 00°13'50" EAST, 654.09 FEET;
THENCE NORTH 89°36'14" EAST, 208.33 FEET;
THENCE NORTH 00°45'06" WEST, 247.54 FEET;
THENCE NORTH 89°43'33" EAST, 628.35 FEET;
THENCE NORTH 89°42'51" EAST, 188.32 FEET;
THENCE SOUTH 00°45'33" WEST, 47.27 FEET;

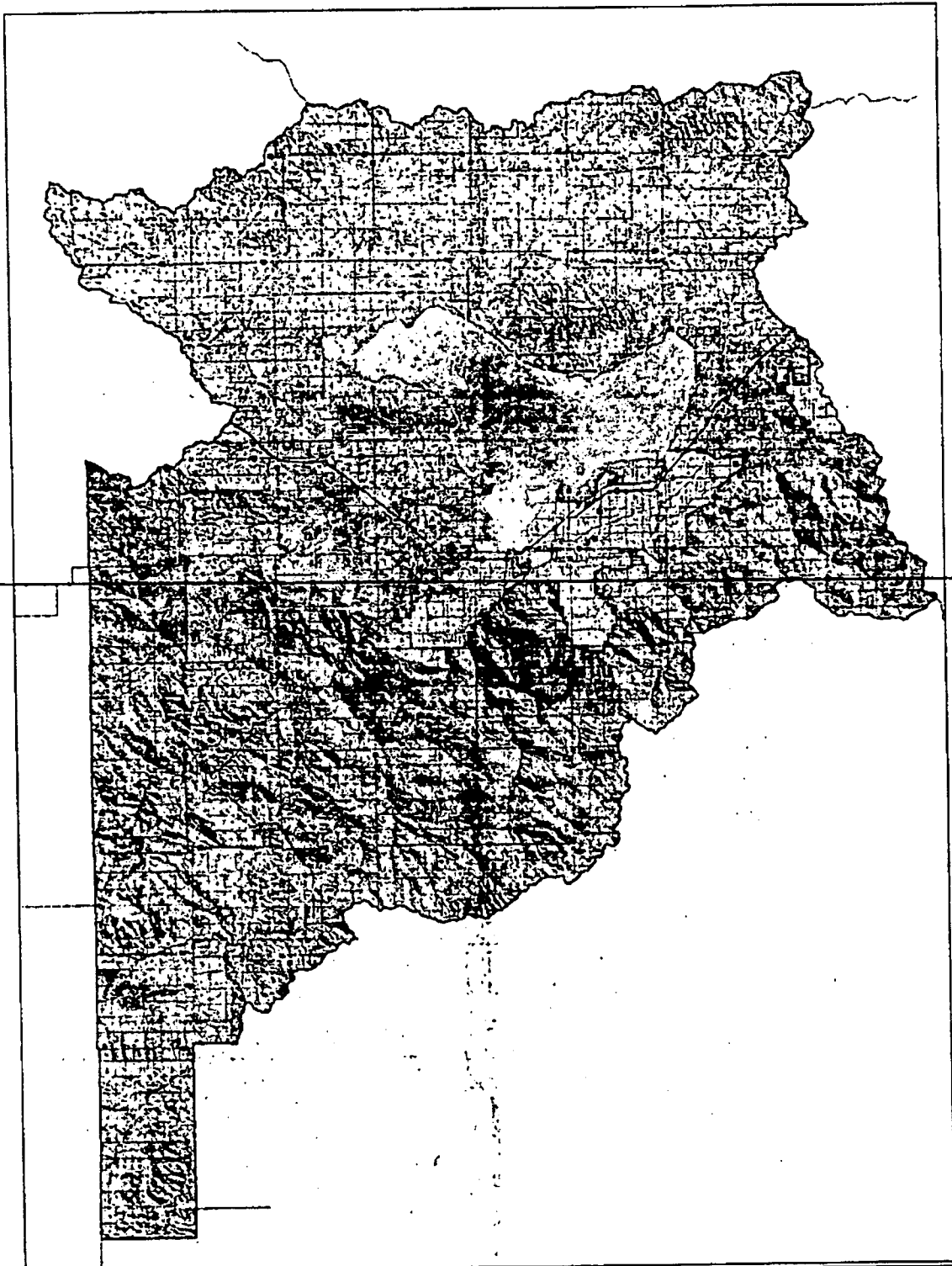
THENCE SOUTH 09°14'40" EAST, 119.09 FEET;
 THENCE SOUTH 83°24'08" EAST, 130.03 FEET;
 THENCE SOUTH 89°15'07" EAST, 267.99 FEET;
 THENCE NORTH 30°21'51" EAST, 109.34 FEET;
 THENCE NORTH, 4.44 FEET;
 THENCE SOUTH 89°56'38" EAST, 442.28 FEET;
 THENCE NORTH 00°48'40" EAST, 88.41 FEET;
 THENCE NORTH 89°41'56" EAST, 536.57 FEET;
 THENCE NORTH 89°46'20" EAST, 110.67 FEET;
 THENCE SOUTH 00°56'52" EAST, 223.24 FEET;
 THENCE EAST, 350.99 FEET;
 THENCE NORTH 00°35'47" EAST, 224.82 FEET;
 THENCE NORTH 89°44'32" EAST, 53.27 FEET;
 THENCE 31.14 FEET ALONG THE ARC OF A 175.00 FOOT RADIUS CURVE TO THE RIGHT (CHORD BEARS
 NORTH 09°00'39" WEST, 31.10 FEET);
 THENCE NORTH 89°48'35" EAST, 100.56 FEET;
 THENCE SOUTH 00°51'38" EAST, 12.25 FEET;
 THENCE NORTH 89°36'14" EAST, 49.11 FEET;
 THENCE NORTH 89°36'15" EAST, 30.90 FEET;
 THENCE SOUTH 00°51'51" EAST, 7.41 FEET;
 THENCE SOUTH 03°10'41" EAST, 10.83 FEET;
~~THENCE NORTH 89°44'31" EAST, 92.06 FEET;~~
 THENCE NORTH 89°44'31" EAST, 660.53 FEET;
 THENCE NORTH 89°44'30" EAST, 250.09 FEET;
 THENCE NORTH 89°45'21" EAST, 102.91 FEET;
 THENCE NORTH 89°44'25" EAST, 166.06 FEET;
 THENCE NORTH 89°44'26" EAST, 55.40 FEET;
 THENCE NORTH 89°44'38" EAST, 322.37 FEET;
 THENCE NORTH 89°40'11" EAST, 23.28 FEET;
 THENCE SOUTH 63°18'55" EAST, 51.96 FEET;
 THENCE SOUTH 62°27'25" EAST, 25.83 FEET;
 THENCE 56.04 FEET ALONG THE ARC OF A 100.00 FOOT RADIUS CURVE TO THE RIGHT (CHORD BEARS
 SOUTH 46°24'10" EAST, 55.31 FEET);
 THENCE SOUTH 30°20'54" EAST, 32.76 FEET;
 THENCE 42.37 FEET ALONG THE ARC OF A 100.00 FOOT RADIUS CURVE TO THE LEFT (CHORD BEARS
 SOUTH 42°29'09" EAST, 42.05 FEET);
 THENCE 101.50 FEET ALONG THE ARC OF A 150.00 FOOT RADIUS CURVE TO THE RIGHT (CHORD BEARS
 SOUTH 35°14'16" EAST, 99.58 FEET);
 THENCE SOUTH 15°51'07" WEST, 72.16 FEET;
 THENCE NORTH 75°20'00" EAST, 119.30 FEET;
 THENCE EAST, 71.39 FEET;
 THENCE SOUTH 01°12'46" EAST, 148.64 FEET;
 THENCE SOUTH 68°57'08" EAST, 138.89 FEET;
 THENCE SOUTH 68°54'25" EAST, 45.17 FEET;
 THENCE NORTH 82°20'16" EAST, 31.42 FEET;
 THENCE SOUTH 68°30'29" EAST, 157.50 FEET;
 THENCE NORTH 01°10'54" EAST, 18.20 FEET;
 THENCE SOUTH 38°07'44" EAST, 75.74 FEET;
 THENCE SOUTH 77°17'11" EAST, 102.55 FEET;
 THENCE SOUTH, 4.13 FEET;
 THENCE SOUTH 77°21'40" EAST, 21.15 FEET;
 THENCE SOUTH 88°54'38" EAST, 236.63 FEET;
 THENCE SOUTH 88°43'50" EAST, 31.02 FEET;
 THENCE SOUTH 89°10'20" EAST, 73.54 FEET;


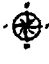
THENCE SOUTH 62°47'16" EAST, 59.34 FEET;
 THENCE SOUTH 46°35'08" EAST, 49.58 FEET;
 THENCE SOUTH 60°39'43" EAST, 85.49 FEET;
 THENCE SOUTH 48°28'46" EAST, 50.27 FEET;
 THENCE NORTH 68°32'12" EAST, 169.16 FEET;
 THENCE NORTH 82°43'08" EAST, 50.80 FEET;
 THENCE NORTH 74°25'54" EAST, 61.45 FEET;
 THENCE NORTH 69°08'45" EAST, 14.96 FEET;
 THENCE NORTH 69°59'10" EAST, 164.01 FEET;
 THENCE SOUTH 84°07'43" EAST, 92.12 FEET;
 THENCE SOUTH 88°07'51" EAST, 221.15 FEET;
 THENCE NORTH 81°15'52" EAST, 59.10 FEET;
 THENCE SOUTH 83°43'11" EAST, 6.62 FEET;
 THENCE SOUTH 83°44'38" EAST, 58.59 FEET;
 THENCE SOUTH 65°18'10" EAST, 76.00 FEET;
 THENCE NORTH 83°23'03" EAST, 91.35 FEET;
 THENCE NORTH 81°09'55" EAST, 106.57 FEET;
 THENCE SOUTH 58°42'10" EAST, 57.67 FEET;
 THENCE SOUTH 58°21'41" EAST, 79.66 FEET;
 THENCE SOUTH 78°13'54" EAST, 88.22 FEET;
 THENCE SOUTH 77°24'06" EAST, 145.63 FEET;
 THENCE SOUTH 33°32'23" EAST, 68.09 FEET;
 THENCE SOUTH 55°00'53" EAST, 92.14 FEET;
 THENCE NORTH 73°17'23" EAST, 110.10 FEET;
 THENCE NORTH 65°20'08" EAST, 188.86 FEET;
 THENCE NORTH 87°55'04" EAST, 120.95 FEET;
 THENCE NORTH 74°41'56" EAST, 176.72 FEET;
 THENCE NORTH 38°06'12" EAST, 53.41 FEET;
 THENCE NORTH 61°16'57" EAST, 202.64 FEET;
 THENCE NORTH 68°43'07" EAST, 77.11 FEET;
 THENCE NORTH 82°03'24" EAST, 10.86 FEET;
 THENCE SOUTH 89°13'29" EAST, 69.28 FEET;
 THENCE NORTH 85°34'20" EAST, 67.23 FEET;
 THENCE SOUTH 63°07'07" EAST, 171.59 FEET;
 THENCE NORTH 69°14'20" EAST, 126.64 FEET;
 THENCE NORTH 55°48'12" EAST, 129.26 FEET;
 THENCE SOUTH 70°48'12" EAST, 145.64 FEET;
 THENCE SOUTH 65°55'44" EAST, 83.51 FEET;
 THENCE SOUTH 48°17'43" EAST, 89.95 FEET;
 THENCE SOUTH 27°28'10" EAST, 75.96 FEET;
 THENCE SOUTH 24°00'26" EAST, 59.45 FEET;
 THENCE SOUTH 55°41'38" EAST, 70.80 FEET;
 THENCE NORTH 79°36'05" EAST, 64.64 FEET;
 THENCE NORTH 55°55'49" EAST, 120.11 FEET;
 THENCE SOUTH 38°03'10" EAST, 32.38 FEET;
 THENCE SOUTH 00°42'54" EAST, 81.85 FEET;
 THENCE NORTH 67°44'57" EAST, 44.34 FEET;
 THENCE NORTH 74°20'56" EAST, 44.60 FEET;
 THENCE SOUTH 87°48'36" EAST, 41.43 FEET;
 THENCE SOUTH 88°25'53" EAST, 43.12 FEET;
 THENCE SOUTH 83°02'17" EAST, 45.18 FEET;
 THENCE NORTH 82°15'43" EAST, 46.40 FEET;
 THENCE NORTH 68°45'33" EAST, 30.61 FEET;
 THENCE NORTH 62°13'49" EAST, 36.54 FEET;

THENCE NORTH 77°49'02" EAST, 46.45 FEET;
THENCE SOUTH 88°21'03" EAST, 73.15 FEET;
THENCE SOUTH 78°47'53" EAST, 50.46 FEET;
THENCE SOUTH 75°23'30" EAST, 70.12 FEET;
THENCE NORTH 00°53'56" WEST, 429.10 FEET;
THENCE SOUTH 89°53'11" EAST, 5.64 FEET;
THENCE NORTH 82°12'20" EAST, 455.71 FEET;
THENCE NORTH 45°46'12" WEST, 1.94 FEET;
THENCE NORTH 82°34'09" EAST, 161.29 FEET;
THENCE NORTH 88°29'36" EAST, 281.72 FEET;
THENCE NORTH 83°41'34" EAST, 62.73 FEET;
THENCE NORTH 74°27'12" EAST, 357.64 FEET;
THENCE NORTH 74°27'10" EAST, 55.82 FEET;
THENCE SOUTH 00°00'05" WEST, 14.96 FEET;
THENCE SOUTH 00°00'02" WEST, 43.18 FEET;
THENCE NORTH 88°58'01" EAST, 26.50 FEET;
THENCE NORTH 88°57'57" EAST, 1369.08 FEET;
THENCE SOUTH 89°18'27" EAST, 1354.20 FEET;
THENCE SOUTH 89°18'31" EAST, 1154.24 FEET;
THENCE SOUTH 00°11'20" EAST, 1246.73 FEET;
THENCE SOUTH 00°11'25" EAST, 2589.80 FEET;
~~THENCE SOUTH 00°10'05" EAST, 2591.67 FEET;~~
THENCE SOUTH 00°29'49" WEST, 2727.68 FEET;
THENCE SOUTH 00°29'40" WEST, 2727.62 FEET;
THENCE SOUTH 00°29'50" WEST, 2727.68 FEET;
THENCE SOUTH 00°29'40" WEST, 2727.68 FEET;
THENCE NORTH 89°27'00" WEST, 2552.15 FEET;
THENCE NORTH 89°27'00" WEST, 2552.02 FEET;
THENCE SOUTH 88°50'59" WEST, 5.44 FEET TO THE POINT OF BEGINNING.

AREA = 7190.87 ACRES

EXHIBIT "B"



<p>Utah County Sheriff's Office 200 West Center Street Provo, UT 84601 (801) 733-1234 Fax: (801) 733-1235 Website: www.uccs.org</p>		<p>DISPATCH SERVICES: Dispatching of Utah County Sheriff's Office units to the following agencies: • Provo Police Department • Orem Police Department • Panguitch Police Department • Richfield Police Department • St. George Police Department • Tooele County Sheriff's Office • Wasatch County Sheriff's Office • West Valley City Police Department • West Jordan Police Department • Wood County Sheriff's Office</p>	<p>LEGEND • City Limits • County Limits • State Route • Interstate • U.S. Highway • State Route • U.S. Highway • Interstate</p>		<p>Utah Valley Dispatch Special Service District</p>
--	---	---	--	---	--