

(For adjoining property see Section 1 )

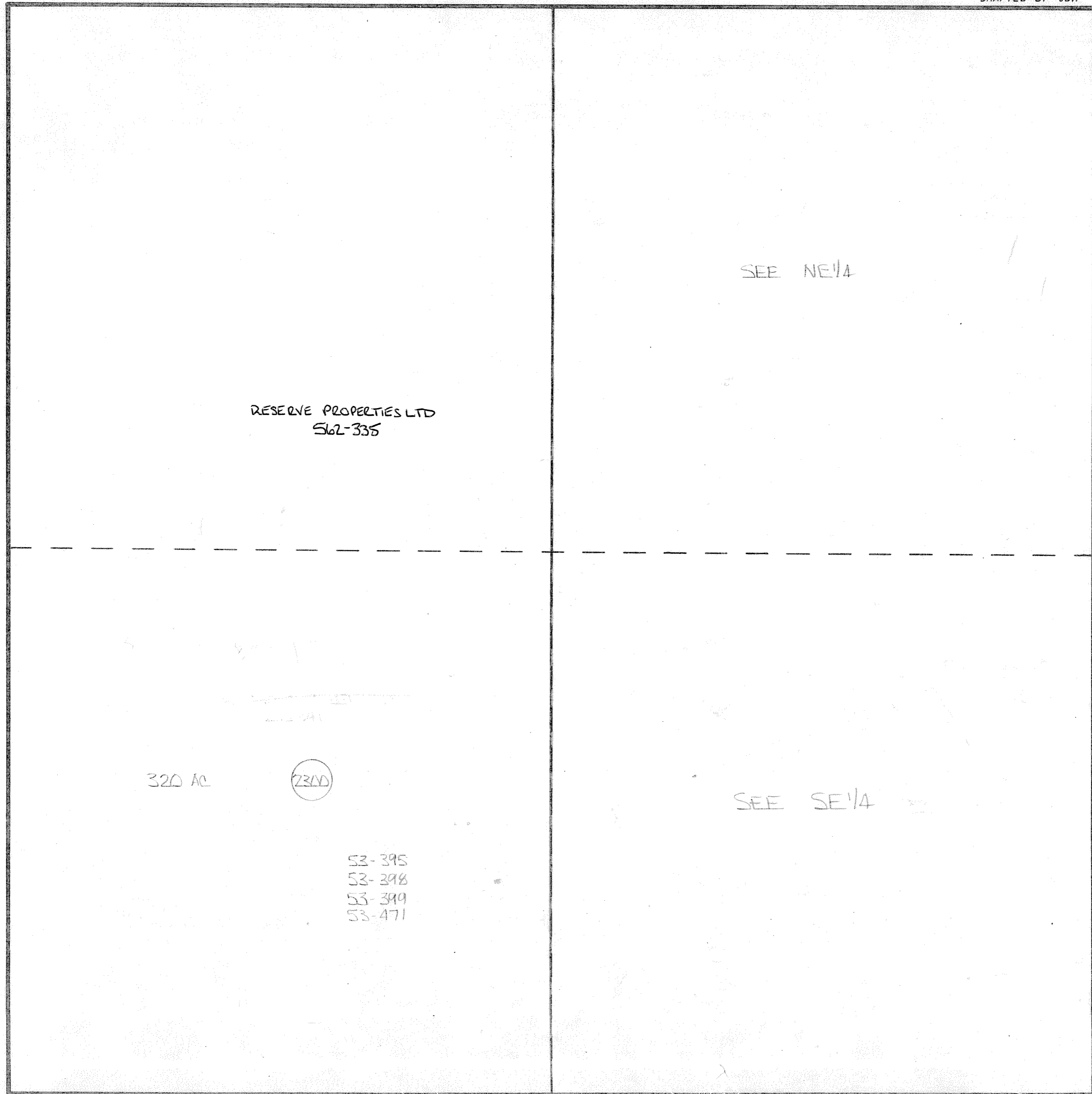
WASATCH COUNTY  
MOUNTAINLAND OF UTAH

W<sup>1</sup>/<sub>2</sub> SECTION 12, T.5S, R.3E. SLM

SCALE: One Inch = 400 Feet

NOTE: Roads, Lakes, Streams, Trails etc.  
are approximate unless described

DRAFTED BY JDM



(For adjoining property see Section 11 )

(For adjoining property see Section 7 )

(For adjoining property see Section 13 )

(For adjoining property see Section 1)

# WASATCH COUNTY

## NE 1/4 SECTION 12, T.5S. R.3E. SLM

SCALE: One Inch = 200 Feet

LOT 2 (40ac)

LOT 1 (34.64ac)

RESERVE PROPERTIES LTD  
S62-335

2301

161.22 AC

NW Cor Sec 7, T.5S R.4E

(FOR ADJOINING PROPERTY SEE NW 1/4)

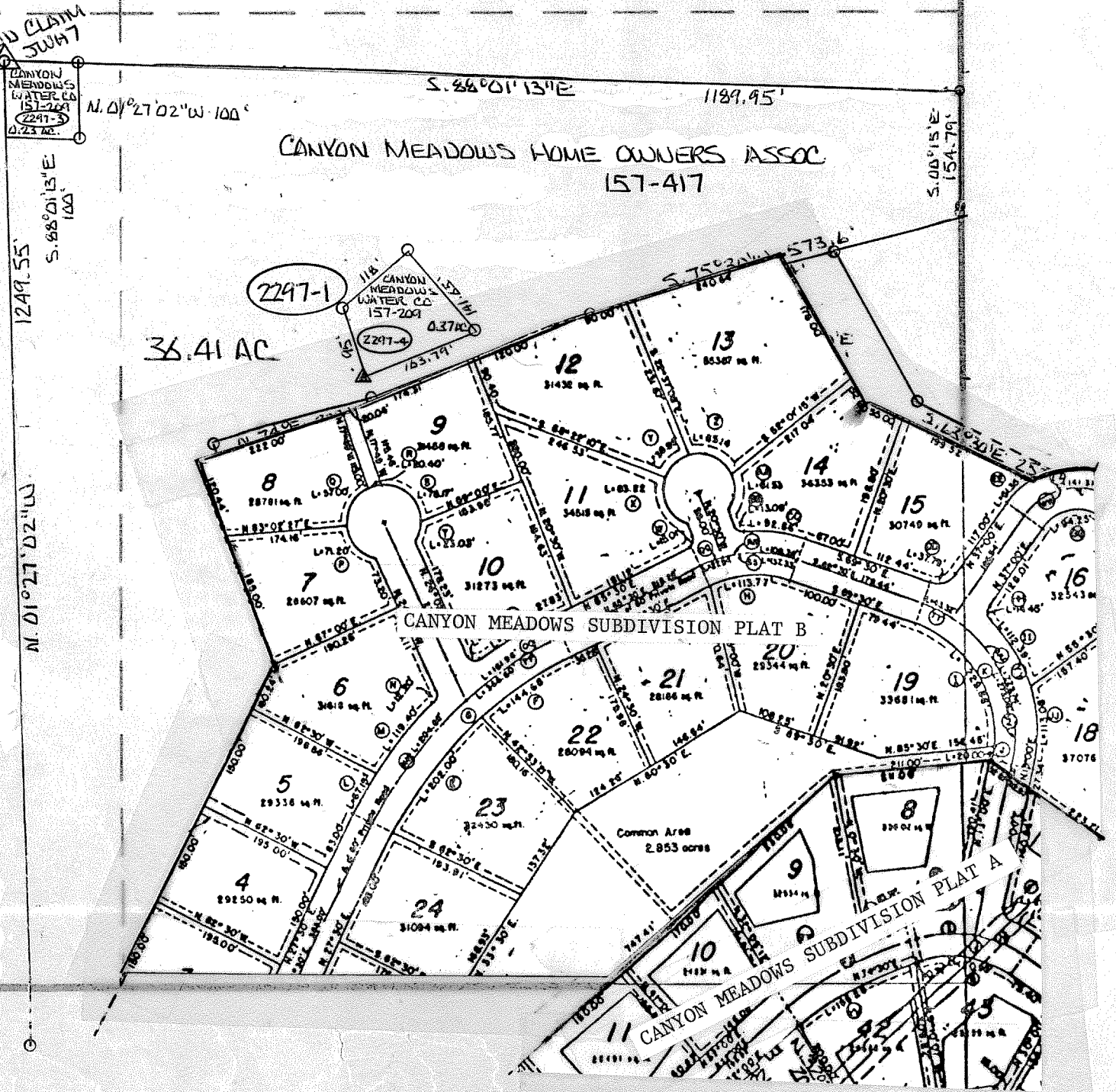
(FOR ADJOINING PROPERTY SEE SECTION 7, T.5S, R.4E SLM)

LOT 3 (35.78ac)

PRIVATE LAND CLAIM  
CANYON MEADOWS WATER CO  
2297-1

CANYON MEADOWS HOME OWNERS ASSOC  
157-417

36.41 AC



(FOR ADJOINING PROPERTY SEE SE 1/4)

SE 1/4 SECTION 12. T.55. R.3E. SLM



LOT #4 (17.09 AC)

2297-9  
RESERVE PROPERTIES LLC  
671-489  
20.48 AC +/-

RESERVE PROPERTIES LTD  
562-335

LOT #5 (33.71 AC)

53-395

161.22 AC

NEW CANYON MEADOWS LC  
262-57

NEW CANYON MEADOWS LC  
262-57

2365-1