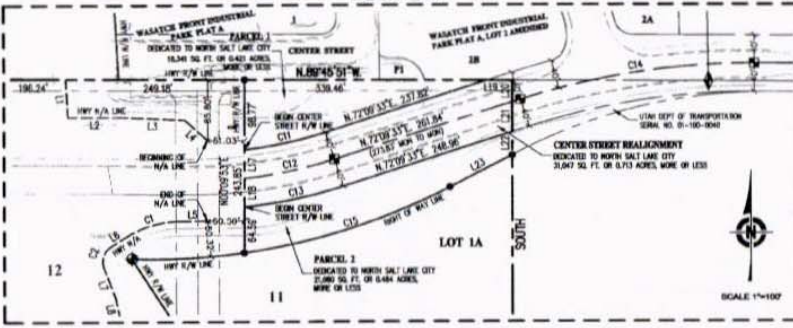
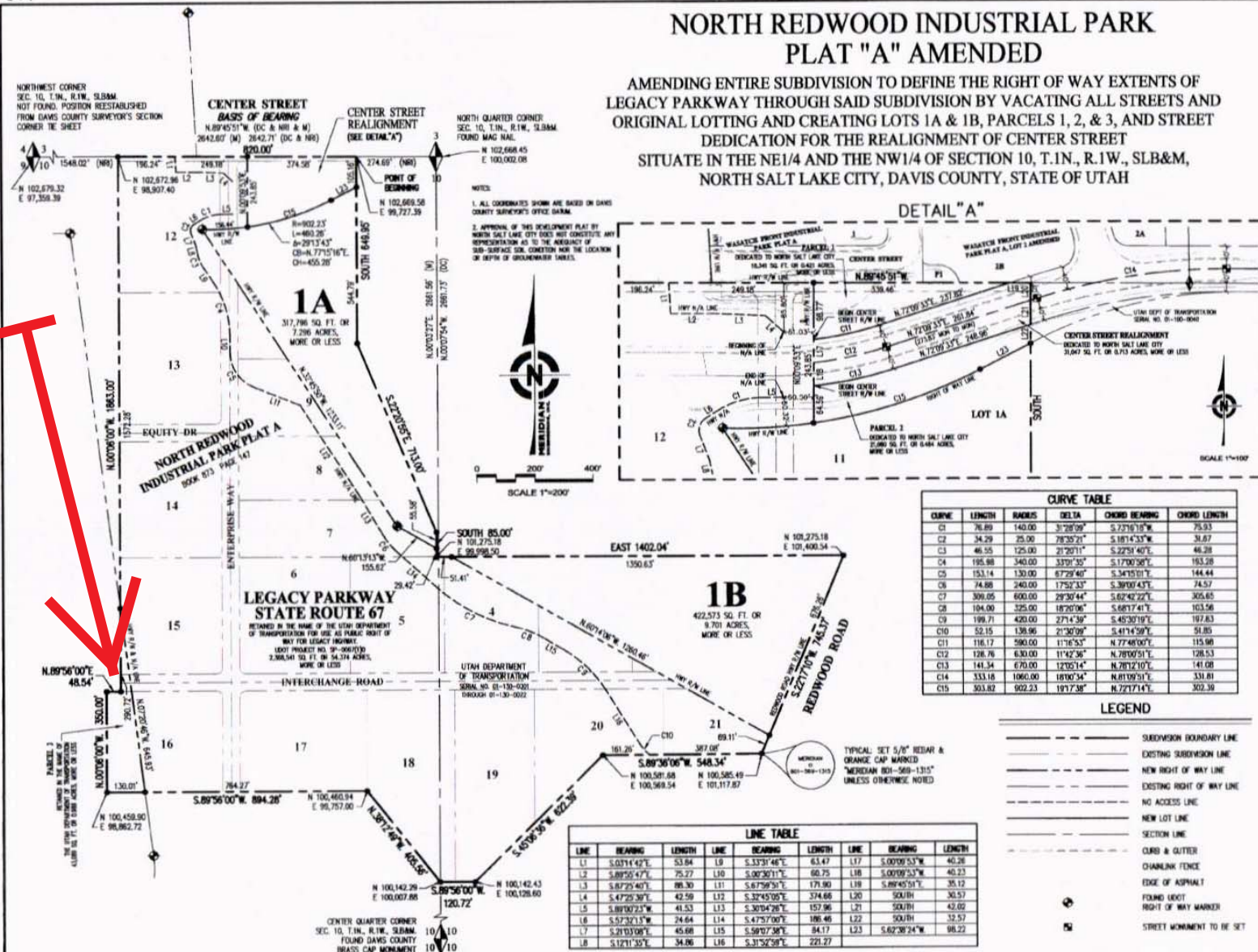


This plat is made solely for the purpose of assisting in locating the property and Cottonwood Title Insurance Agency, Inc. assumes no liability for variation, if any, with actual survey.

NORTH REDWOOD INDUSTRIAL PARK PLAT "A" AMENDED

AMENDING ENTIRE SUBDIVISION TO DEFINE THE RIGHT OF WAY EXTENTS OF LEGACY PARKWAY THROUGH SAID SUBDIVISION BY VACATING ALL STREETS AND ORIGINAL LOTTING AND CREATING LOTS 1A & 1B, PARCELS 1, 2, & 3, AND STREET DEDICATION FOR THE REALIGNMENT OF CENTER STREET SITUATE IN THE NE1/4 AND THE NW1/4 OF SECTION 10, T.1N., R.1W., SLB&M, NORTH SALT LAKE CITY, DAVIS COUNTY, STATE OF UTAH



| CURVE | LENGTH | RADIUS | DELTA | CHORD BEARING | CHORD LENGTH |
|-------|--------|---------|-----------|---------------|--------------|
| C1 | 76.89 | 140.00 | 37°28'59" | S 27°16'10" W | 75.53 |
| C2 | 34.29 | 25.00 | 78°32'21" | S 18°14'53" W | 31.87 |
| C3 | 46.55 | 125.00 | 21°20'11" | S 22°51'40" E | 46.28 |
| C4 | 195.88 | 340.00 | 33°01'30" | S 17°00'38" E | 193.28 |
| C5 | 153.14 | 130.00 | 87°29'40" | S 34°51'01" E | 144.44 |
| C6 | 74.88 | 240.00 | 17°52'33" | S 30°00'43" E | 74.57 |
| C7 | 309.05 | 600.00 | 29°30'44" | S 62°42'22" E | 305.85 |
| C8 | 104.00 | 225.00 | 18°20'06" | S 68°17'41" E | 103.58 |
| C9 | 199.71 | 420.00 | 27°14'36" | S 45°30'16" E | 192.83 |
| C10 | 52.15 | 138.96 | 21°20'09" | S 41°14'58" E | 51.85 |
| C11 | 116.17 | 590.00 | 11°36'53" | N 77°48'00" E | 115.98 |
| C12 | 128.76 | 630.00 | 11°42'36" | N 78°00'51" E | 128.53 |
| C13 | 141.34 | 670.00 | 12°02'14" | N 78°12'10" E | 141.08 |
| C14 | 333.18 | 1060.00 | 18°00'34" | N 81°09'51" E | 331.81 |
| C15 | 303.82 | 802.23 | 19°17'38" | N 82°17'14" E | 302.39 |

| LINE | BEARING | LENGTH | LINE | BEARING | LENGTH | LINE | BEARING | LENGTH |
|------|---------------|--------|------|---------------|--------|------|---------------|--------|
| L1 | S 0°11'43" E | 53.84 | L9 | S 33°51'46" E | 63.47 | L17 | S 0°00'59" S | 40.26 |
| L2 | S 89°50'43" E | 75.27 | L10 | S 0°03'30" E | 60.75 | L18 | S 0°00'59" S | 40.23 |
| L3 | S 87°25'40" E | 88.30 | L11 | S 67°59'30" E | 171.90 | L19 | S 89°45'51" E | 35.12 |
| L4 | S 47°29'30" E | 42.59 | L12 | S 30°45'05" E | 374.66 | L20 | S 0°01'01" S | 30.57 |
| L5 | S 89°02'23" E | 41.53 | L13 | S 30°42'36" E | 157.96 | L21 | S 0°01'01" S | 42.62 |
| L6 | S 57°32'13" E | 24.64 | L14 | S 47°57'00" E | 106.48 | L22 | S 0°01'01" S | 32.57 |
| L7 | S 21°03'58" E | 45.88 | L15 | S 59°07'36" E | 84.17 | L23 | S 62°38'24" W | 98.22 |
| L8 | S 12°11'32" E | 34.86 | L16 | S 31°52'39" E | 221.27 | | | |

SURVEYOR'S CERTIFICATE
I, MICHAEL W. HANDEG, A PROFESSIONAL LAND SURVEYOR, HOLD CERTIFICATE NO. 88878A, AS PRESCRIBED BY THE STATE OF UTAH, AND DO HEREBY CERTIFY THAT BY ALIQUOTMENT OF THE ORIGINAL, I HAVE MADE AN ACCURATE SURVEY OF THE TRACT OF LAND SHOWN ON THIS PLAT, NORTH REDWOOD INDUSTRIAL PARK PLAT "A" AMENDED, AND THAT THE SAME HAS BEEN CORRECTED TO BE IN ACCORDANCE WITH THE RECORD AS SHOWN ON THIS PLAT.

RECORD DESCRIPTION
FROM NORTH REDWOOD INDUSTRIAL PARK PLAT "A" (SUBDIVISION PLAT BOOK 873 PAGE 147) (MERRIAM)
BEGINNING ON THE SECTION LINE AT A POINT N 89°51'51" W 274.69 FEET ALONG THE SECTION LINE FROM THE NORTH 1/4 CORNER OF SECTION 10 TOWARD THE RANGE 10 S, SLB & M, BEARING S 89°51'51" W AND RUNNING THENCE SOUTH 1/4 CORNER FEET; THENCE S 27°16'10" W 75.53 FEET; THENCE SOUTH 89°51'51" W 34.29 FEET; THENCE SOUTH 89°51'51" W 46.55 FEET; THENCE S 17°00'38" W 195.88 FEET; THENCE S 34°51'01" W 153.14 FEET; THENCE S 30°00'43" W 74.88 FEET; THENCE S 62°42'22" W 309.05 FEET; THENCE S 68°17'41" W 104.00 FEET; THENCE S 45°30'16" W 199.71 FEET; THENCE S 41°14'58" W 52.15 FEET; THENCE N 77°48'00" E 116.17 FEET; THENCE N 78°00'51" E 128.76 FEET; THENCE N 78°12'10" E 141.34 FEET; THENCE N 81°09'51" E 333.18 FEET; THENCE N 82°17'14" E 303.82 FEET ALONG THE SECTION LINE TO THE POINT OF BEGINNING.
CONTAINS 2 LOTS AND 3 PARCELS

OWNER'S DEDICATION
KNOW ALL MEN BY THESE PRESENTS THAT WE, THE UNDERSIGNED OWNERS OF THE DESCRIBED TRACT OF LAND, HAVE CAUSED THE SAME TO BE SUBDIVIDED INTO LOTS AND STREETS TO HEREAFTER BE KNOWN AS NORTH REDWOOD INDUSTRIAL PARK PLAT "A" AMENDED, DO HEREBY DEDICATE FOR PUBLIC USE OF THE PUBLIC ALL PARCELS OF LAND SHOWN ON THIS PLAT AS BEING FOR PUBLIC USE, AND DO HEREBY, INTEND, AND GIVE THE CITY MANAGER AGAINST ANY CLAIMS OR OTHER ENCUMBRANCES ON THE DEDICATED STREETS WHICH MAY INTERFERE WITH THE CITY'S USE, OPERATION, AND MAINTENANCE OF THE STREETS AND DO HEREBY WARRANT THE EASEMENTS AS SHOWN FOR THE USE BY ALL OWNERS OF LOTS OR OTHER NECESSARY SERVICES, IN WITNESS WHEREOF, WE HAVE HEREUNTO SET OUR HANDS THIS 28th DAY OF August, 2012.

UTAH DEPARTMENT OF TRANSPORTATION
IN WITNESS WHEREOF, SAID UTAH DEPARTMENT OF TRANSPORTATION HAS CAUSED THIS INSTRUMENT TO BE EXECUTED THIS 28th DAY OF August, A.D. 2012, BY ITS DIRECTOR OF RIGHT OF WAY.
STATE OF UTAH }
COUNTY OF DAVIS }
ON THE DATE FIRST ABOVE WRITTEN PERSONALLY APPEARED BEFORE ME, MICHAEL W. HANDEG, A PROFESSIONAL LAND SURVEYOR, WHO HAS DECLARED THAT HE IS THE DIRECTOR OF RIGHT OF WAY, AND HE FURTHER ACKNOWLEDGES TO ME THAT SAID INSTRUMENT WAS SIGNED BY HIM IN THE PRESENCE OF SAID UTAH DEPARTMENT OF TRANSPORTATION.
WITNESS MY HAND AND OFFICIAL STAMP THE DATE IN THIS CERTIFICATE FIRST WRITTEN.
MICHAEL CHRISTIAN HANDEG
Professional Land Surveyor
Commission # 88878A
November 28, 2012

SURVEY NOTES
(1) BEARING AND/OR DISTANCE DATA TAKEN DIRECTLY FROM ACTUAL SURVEYED MEASUREMENTS.
(2) BEARING AND/OR DISTANCE INFORMATION TAKEN FROM DAVIS COUNTY TOWNSHIP REFERENCE PLAT: 10N, R1W, SLB&M.
(3) BEARING AND/OR DISTANCE INFORMATION TAKEN FROM NORTH REDWOOD INDUSTRIAL PARK PLAT "A" (SUBDIVISION PLAT BOOK 873 PAGE 147).
(4) UNLESS OTHERWISE NOTED, SET 5/8" S 1/2" REBAR WITH BRASS CAP MARKED "MERRIAM 80-569-1315" UNLESS OTHERWISE NOTED.

**NORTH REDWOOD INDUSTRIAL PARK
PLAT "A" AMENDED**
AMENDING ENTIRE SUBDIVISION TO DEFINE THE RIGHT OF WAY EXTENTS OF LEGACY PARKWAY THROUGH SAID SUBDIVISION BY VACATING ALL STREETS AND ORIGINAL LOTTING AND CREATING LOTS 1A & 1B, PARCELS 1, 2, & 3, AND STREET DEDICATION FOR THE REALIGNMENT OF CENTER STREET SITUATE IN THE NE1/4 AND THE NW1/4 OF SECTION 10, T.1N., R.1W., SLB&M, NORTH SALT LAKE CITY, DAVIS COUNTY, STATE OF UTAH

| | | | | | | |
|---------------------------------------------------------------------------------------------------------------------------------------------------------------------------------------------|---------------------------------------------------------------------------------------|---------------------------------------------------------------------------------------------------------------------------------------------------------------------------------------------------------------------|----------------------------------------------------------------------------------------------------|------------------------------------------------------------------------------------|-------------------------------------------------------------------------------------------------------------------------------------------------------------------------------------------------------------------------|------------------------------------------------------------------------------------------------------------------|
| PREPARED BY: MERRIDIAN ENGINEERING, INC. 1677 NORTH REDWOOD INDUSTRIAL PARK PLAT "A" NORTH SALT LAKE CITY, UTAH 84119 PHONE (801) 588-1128 FAX (801) 588-1310 | RECOMMENDED FOR APPROVAL THIS 28th DAY OF August, 2012 CITY ENGINEER | CITY COUNCIL'S APPROVAL PRESENTED TO THE CITY COUNCIL OF NORTH SALT LAKE CITY, UTAH. THIS 21st DAY OF August, 2012, AT WHICH TIME THIS SUBDIVISION WAS APPROVED AND CITY RECORDER ATTEST: MAYOR | RECOMMENDED FOR APPROVAL THIS 31st DAY OF JULY, 2012 CHAIRMAN PLANNING COMMISSION | RECOMMENDED FOR APPROVAL THIS 4th DAY OF Sept, 2012 CITY ATTORNEY | DAVIS COUNTY RECORDER ENTRY NUMBER 26938411 FEE PWD \$0 DAY FOR RECORD AND RECORDED THIS 14th DAY OF OCTOBER, 2012 AT 12:31 P.M. IN BOOK 5638 OF RECORD PAGE 484 COUNTY RECORDER BY: _____ DEPUTY | COMP. FILE 09073-04 N. REDWOOD IND. PROJECT NO. 10059-03 SHEET NO. 1 OF 1 |
| | | | | | | |