

**NOTES**

1. The dimensions of the Units and square footage calculations shown on this Condominium Plat are based on drawings supplied by HKS Architects. The square footages shown on this plat are calculated in accordance with the Act and the Residential Declaration. Such calculation typically differs somewhat from the square footage determined by the architect or others using different methods of determining unit size. It is the intent that the private ownership area of the Units will be as constructed. Upon the completion of each Unit ("Completed Unit"), the boundaries of the Completed Unit shall be automatically adjusted to be the boundaries of such as-built Completed Unit as described in the Declarations.
2. Although columns, bearing walls and other structural elements within a Unit may not contain any crosshatching, such elements shall not be deemed Access Areas. All common structural elements are designated as Non-Hotel Use and Support Areas, as described in the Declarations. Pursuant to the Declarations, each Unit Owner and the Residential Association (in common with Hotel Owner) are granted the following non-exclusive easements, which shall be appurtenant to each Unit: Structural and Mechanical Support provided by all structural members, columns, footings and foundations which are a part of the Hotel and which are necessary for the support of any Unit.
3. Pursuant to the Declarations the Balcony/Patio Areas as depicted on this Condominium Plat are reserved for the use of certain Unit Owners to the exclusion of other Unit Owners. Except as otherwise designated hereon, the use of each respective patio, deck or balcony is appurtenant to the respective Unit to which such Balcony/Patio Areas are adjacent as shown hereon, subject to the rights of the Hotel Owner as described in the Declarations.

**UNIT SQUARE FOOTAGE TABLE**

UNIT NUMBER	SQUARE FOOTAGE
901	2,853 SF
902	2,515 SF
905	2,130 SF
906	2,127 SF
920	2,787 SF
921	2,789 SF
930	3,376 SF
933	2,644 SF
940	2,247 SF
941	2,240 SF
944	2,238 SF
945	2,231 SF
950	1,886 SF
951	1,877 SF
952	2,251 SF
953	2,605 SF
960	2,120 SF
961	1,999 SF
962	2,080 SF
963	2,196 SF
980	2,204 SF
981	3,090 SF
983	2,180 SF
984	2,071 SF

**LEVEL 5**  
FLOOR LEVEL ELEVATION 8,394.0'

**LEGEND**

- COMMON AREA EASEMENT/ ACCESS AREA
- CONDOMINIUM UNIT
- LIMITED COMMON EASEMENT/ BALCONY & PATIO AREA
- NON-CONDOMINIUM PROPERTY/ RESTRICTED AREA

CONDOMINIUM PLAT  
**THE HOTEL & RESIDENCES AT  
EMPIRE CANYON RESORT**

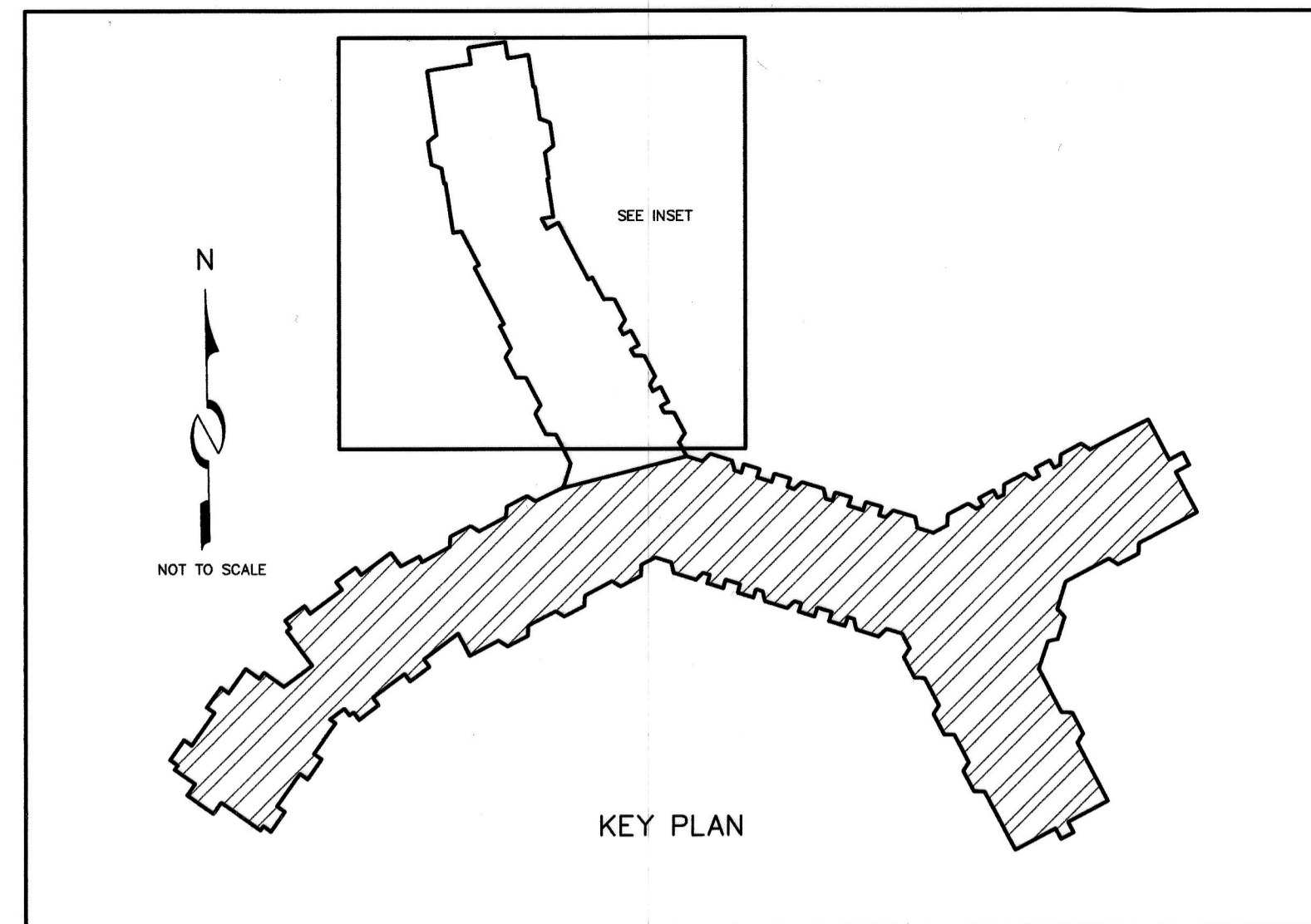
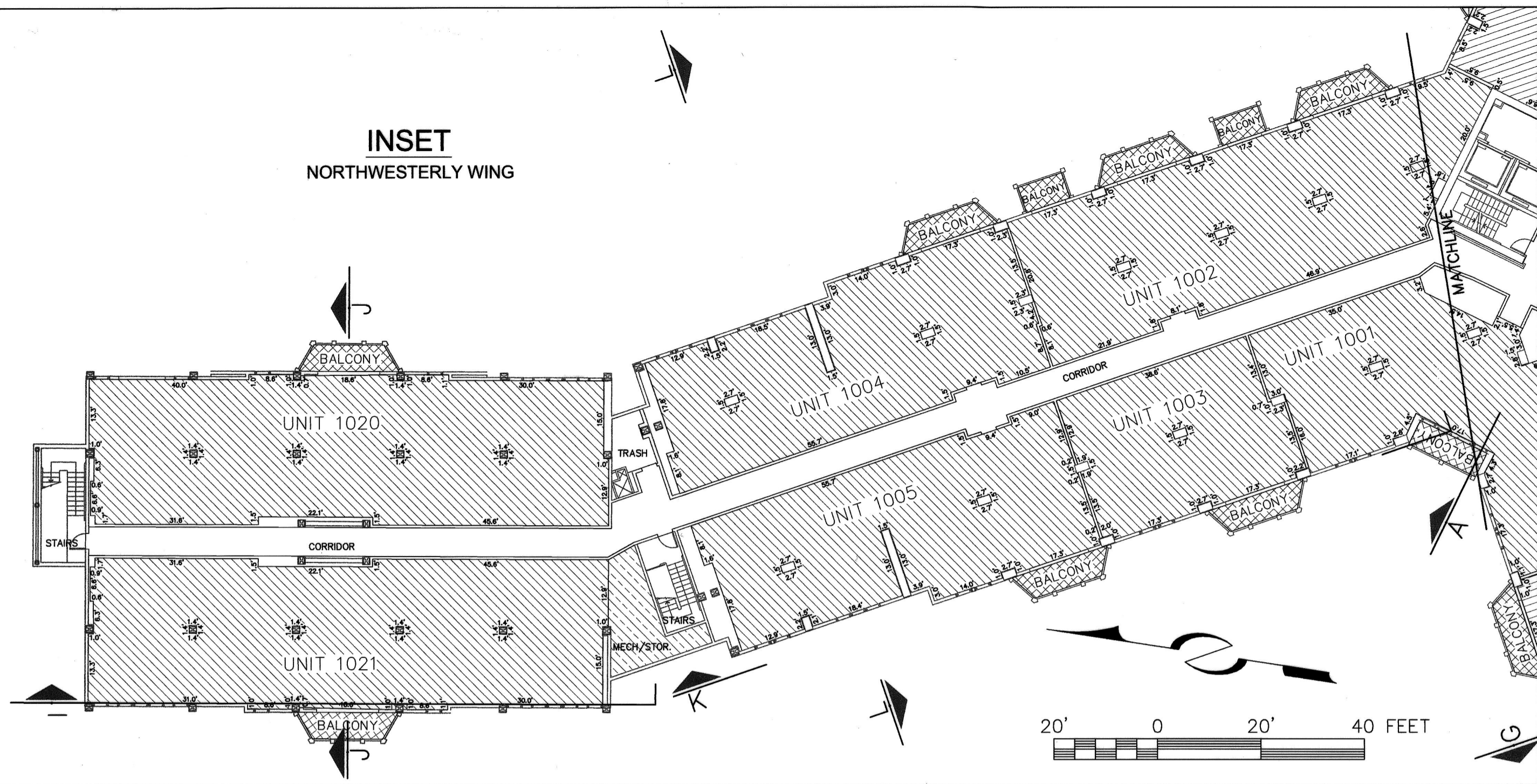
A UTAH CONDOMINIUM PROJECT  
LOCATED IN THE WEST 1/2 OF SECTION 28, AND THE EAST 1/2 OF SECTION 29  
TOWNSHIP 2 SOUTH, RANGE 4 EAST SALT LAKE BASE & MERIDIAN

JOB NO: 2-1-08

RECORDED  
STATE OF UTAH, COUNTY OF SUMMIT, AND FILED  
AT THE REQUEST OF  
**ENTRY NO. 00890518**  
01/20/2010 09:05:42 AM B. 2017 P. 1883  
PLAT PAGE 1/1  
FILED SP/1883 SUMMIT COUNTY RECORDER  
FEE \$34.00 BY PARK CITY TITLE



**INSET  
NORTHWESTERLY WING**

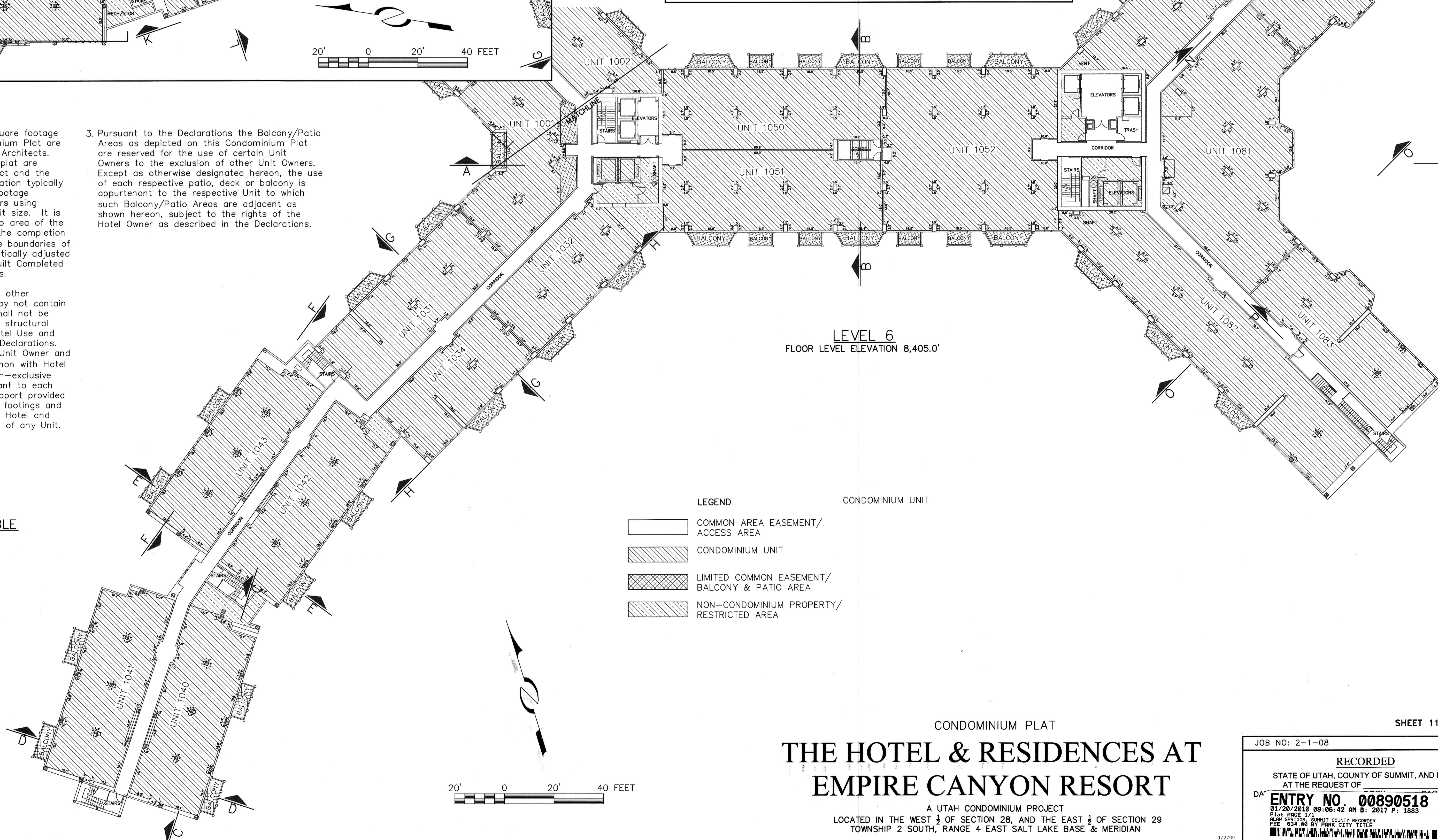


**NOTES**

1. The dimensions of the Units and square footage calculations shown on this Condominium Plat are based on drawings supplied by HKS Architects. The square footages shown on this plat are calculated in accordance with the Act and the Residential Declaration. Such calculation typically differs somewhat from the square footage determined by the architect or others using different methods of determining unit size. It is the intent that the private ownership area of the Units will be as constructed. Upon the completion of each Unit ("Completed Unit"), the boundaries of the Completed Unit shall be automatically adjusted to be the boundaries of such as-built Completed Unit as described in the Declarations.
2. Although columns, bearing walls and other structural elements within a Unit may not contain any crosshatching, such elements shall not be deemed Access Areas. All common structural elements are designated as Non-Hotel Use and Support Areas, as described in the Declarations. Pursuant to the Declarations, each Unit Owner and the Residential Association (in common with Hotel Owner) are granted the following non-exclusive easements, which shall be appurtenant to each Unit: Structural and Mechanical Support provided by all structural members, columns, footings and foundations which are a part of the Hotel and which are necessary for the support of any Unit.
3. Pursuant to the Declarations the Balcony/Patio Areas as depicted on this Condominium Plat are reserved for the use of certain Unit Owners to the exclusion of other Unit Owners. Except as otherwise designated hereon, the use of each respective patio, deck or balcony is appurtenant to the respective Unit to which such Balcony/Patio Areas are adjacent as shown hereon, subject to the rights of the Hotel Owner as described in the Declarations.

**UNIT SQUARE FOOTAGE TABLE**

UNIT NUMBER	SQUARE FOOTAGE
1001	2,148 SF
1002	2,490 SF
1003	1,147 SF
1004	1,997 SF
1005	1,945 SF
1020	2,770 SF
1021	2,770 SF
1031	2,255 SF
1032	1,741 SF
1034	1,688 SF
1040	2,201 SF
1041	2,202 SF
1042	2,195 SF
1043	2,195 SF
1050	2,712 SF
1051	2,683 SF
1052	4,367 SF
1062	3,754 SF
1063	2,228 SF
1081	4,086 SF
1082	4,067 SF
1083	2,251 SF



**LEVEL 6**  
FLOOR LEVEL ELEVATION 8,405.0'

**LEGEND**

- COMMON AREA EASEMENT/ ACCESS AREA
- CONDOMINIUM UNIT
- LIMITED COMMON EASEMENT/ BALCONY & PATIO AREA
- NON-CONDOMINIUM PROPERTY/ RESTRICTED AREA

CONDOMINIUM PLAT

**THE HOTEL & RESIDENCES AT  
EMPIRE CANYON RESORT**

A UTAH CONDOMINIUM PROJECT  
LOCATED IN THE WEST 1/2 OF SECTION 28, AND THE EAST 1/2 OF SECTION 29  
TOWNSHIP 2 SOUTH, RANGE 4 EAST SALT LAKE BASE & MERIDIAN

SHEET 11 OF 18

JOB NO: 2-1-08

RECORDED

STATE OF UTAH, COUNTY OF SUMMIT, AND FILED  
AT THE REQUEST OF

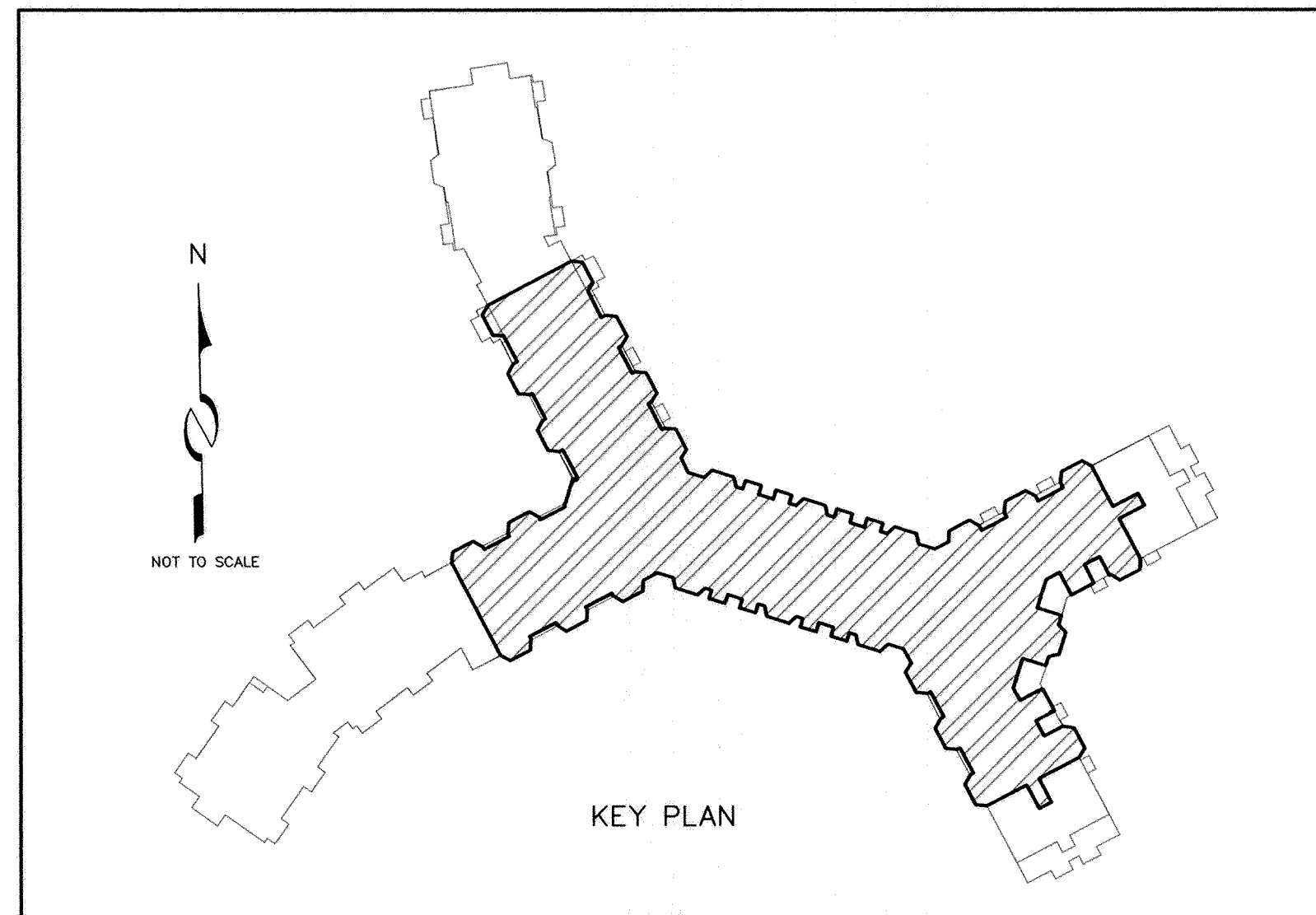
DA **ENTRY NO. 00890518**

01/20/2010 09:06:42 AM B: 2017 P: 1883

PLAT PAGE 1/1

ALAN SPRINGS, SUMMIT COUNTY RECORDER  
FEE: \$34.00 BY PROX. CITY TITLE





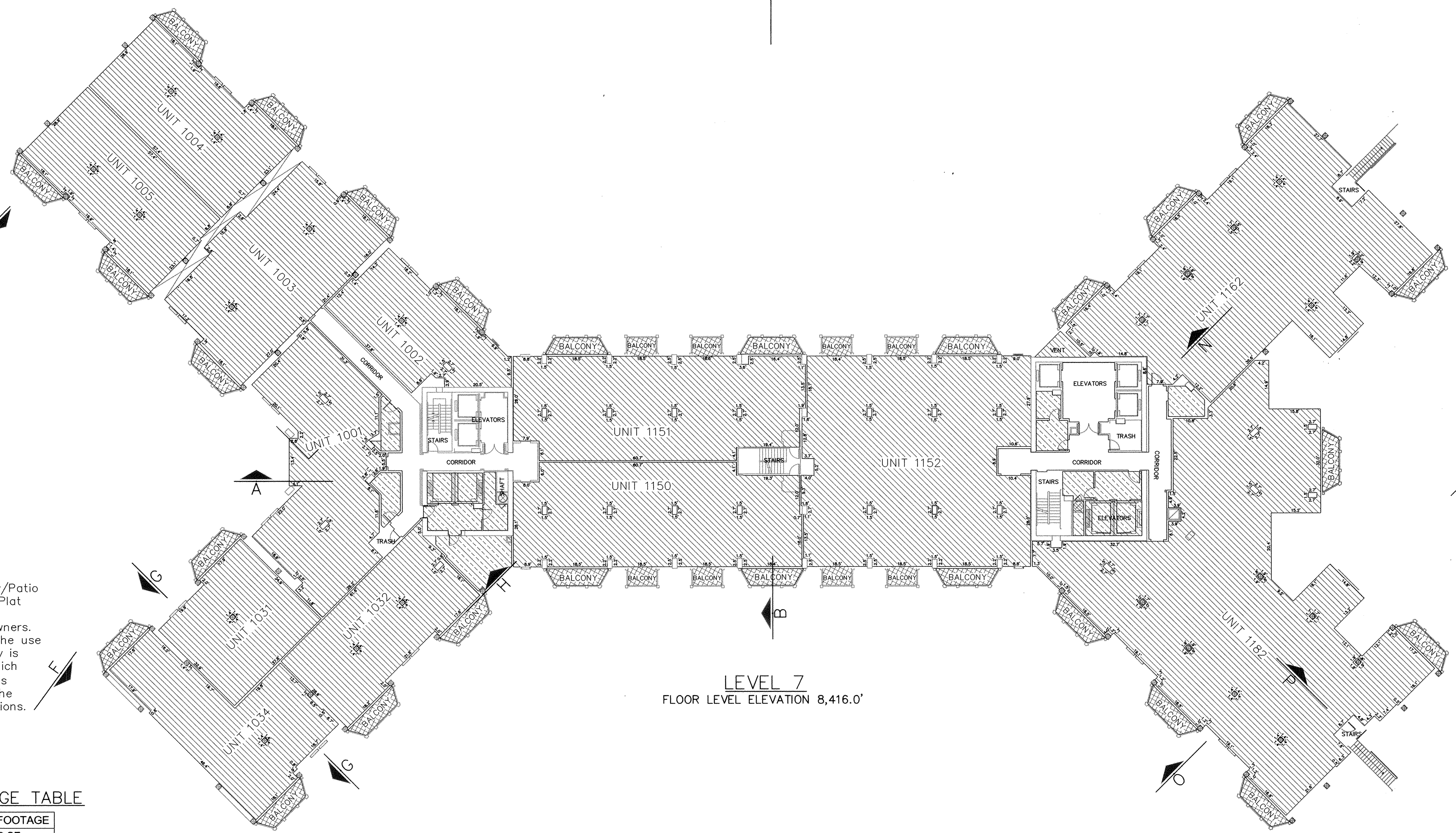
**NOTES**

1. The dimensions of the Units and square footage calculations shown on this Condominium Plat are based on drawings supplied by HKS Architects. The square footages shown on this plat are calculated in accordance with the Act and the Residential Declaration. Such calculation typically differs somewhat from the square footage determined by the architect or others using different methods of determining unit size. It is the intent that the private ownership area of the Units will be as constructed. Upon the completion of each Unit ("Completed Unit"), the boundaries of the Completed Unit shall be automatically adjusted to be the boundaries of such as-built Completed Unit as described in the Declarations.
2. Although columns, bearing walls and other structural elements within a Unit may not contain any crosshatching, such elements shall not be deemed Access Areas. All common structural elements are designated as Non-Hotel Use and Support Areas, as described in the Declarations. Pursuant to the Declarations, each Unit Owner and the Residential Association (in common with Hotel Owner) are granted the following non-exclusive easements, which shall be appurtenant to each Unit: Structural and Mechanical Support provided by all structural members, columns, footings and foundations which are a part of the Hotel and which are necessary for the support of any Unit.

3. Pursuant to the Declarations the Balcony/Patio Areas as depicted on this Condominium Plat are reserved for the use of certain Unit Owners to the exclusion of other Unit Owners. Except as otherwise designated hereon, the use of each respective patio, deck or balcony is appurtenant to the respective Unit to which such Balcony/Patio Areas are adjacent as shown hereon, subject to the rights of the Hotel Owner as described in the Declarations.

**UNIT SQUARE FOOTAGE TABLE**

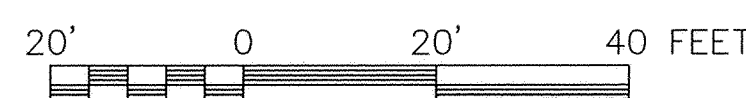
UNIT NUMBER	SQUARE FOOTAGE
1001	2,259 SF
1002	1,310 SF
1003	2,244 SF
1004	1,723 SF
1005	1,723 SF
1031	1,278 SF
1032	1,632 SF
1034	1,729 SF
1150	2,682 SF
1151	2,699 SF
1152	4,367 SF
1162	4,667 SF
1182	6,858 SF



**LEVEL 7**  
FLOOR LEVEL ELEVATION 8,416.0'

**LEGEND**

- COMMON AREA EASEMENT/ ACCESS AREA
- CONDOMINIUM UNIT
- LIMITED COMMON EASEMENT/ BALCONY & PATIO AREA
- NON-CONDOMINIUM PROPERTY/ RESTRICTED AREA



CONDOMINIUM PLAT  
**THE HOTEL & RESIDENCES AT  
EMPIRE CANYON RESORT**

A UTAH CONDOMINIUM PROJECT  
LOCATED IN THE WEST 1/2 OF SECTION 28, AND THE EAST 1/2 OF SECTION 29  
TOWNSHIP 2 SOUTH, RANGE 4 EAST SALT LAKE BASE & MERIDIAN

JOB NO: 2-1-08

RECORDED

STATE OF UTAH, COUNTY OF SUMMIT, AND FILED  
AT THE REQUEST OF

**ENTRY NO. 00890518**

01/20/2010 09:06:42 AM B: 2017 P: 1883

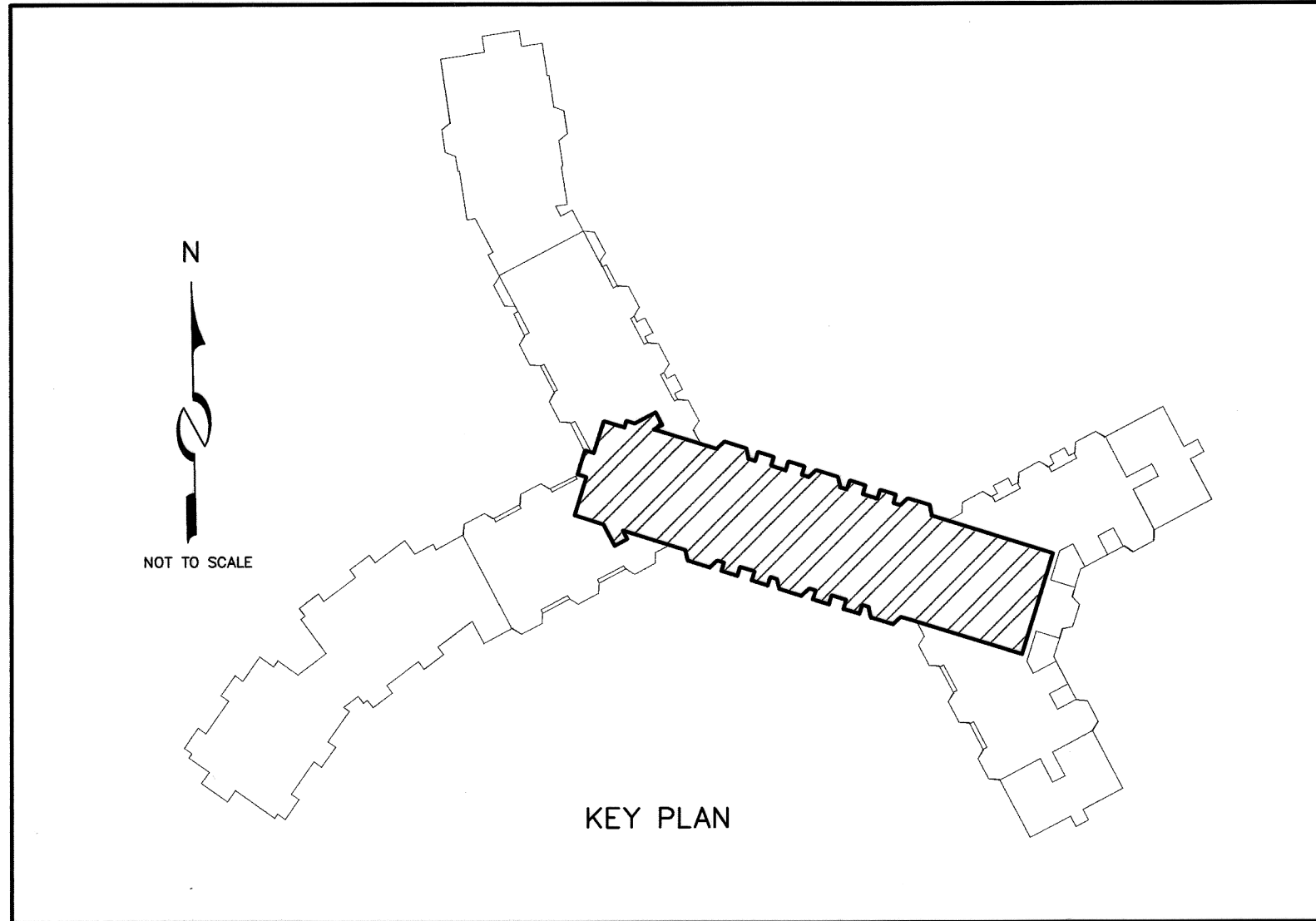
PLAT PAGE 1/1

FILE SPRINGS: SUMMIT COUNTY RECORDER

FILE 634.00 BY PARK CITY TITLE

FILE 634.00 BY PARK CITY TITLE



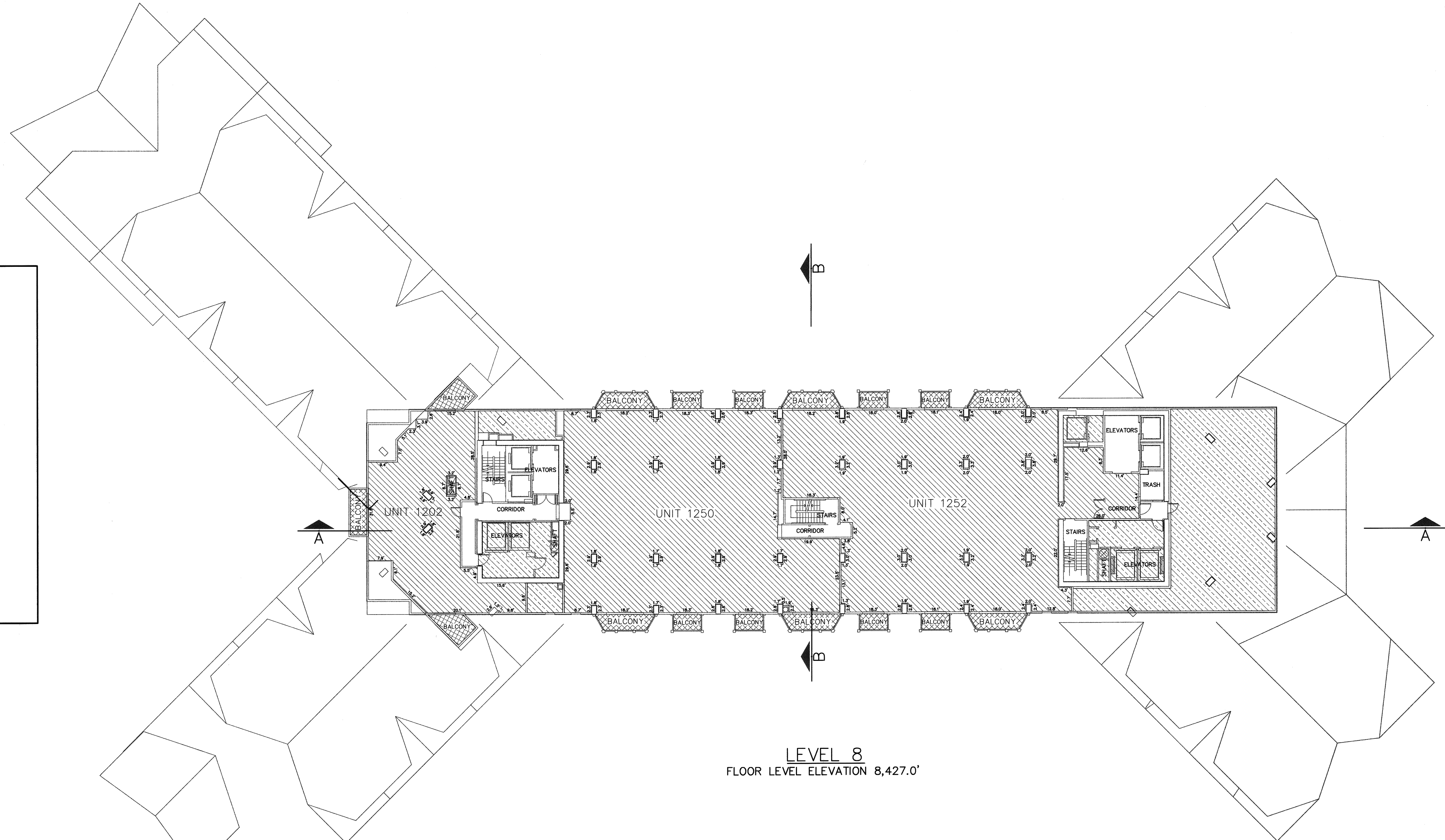


NOTES

1. The dimensions of the Units and square footage calculations shown on this Condominium Plat are based on drawings supplied by HKS Architects. The square footages shown on this plat are calculated in accordance with the Act and the Residential Declaration. Such calculation typically differs somewhat from the square footage determined by the architect or others using different methods of determining unit size. It is the intent that the private ownership area of the Units will be as constructed. Upon the completion of each Unit ("Completed Unit"), the boundaries of the Completed Unit shall be automatically adjusted to be the boundaries of such as-built Completed Unit as described in the Declarations.
2. Although columns, bearing walls and other structural elements within a Unit may not contain any crosshatching, such elements shall not be deemed Access Areas. All common structural elements are designated as Non-Hotel Use and Support Areas, as described in the Declarations. Pursuant to the Declarations, each Unit Owner and the Residential Association (in common with Hotel Owner) are granted the following non-exclusive easements, which shall be appurtenant to each Unit: Structural and Mechanical Support provided by all structural members, columns, footings and foundations which are a part of the Hotel and which are necessary for the support of any Unit.
3. Pursuant to the Declarations the Balcony/Patio Areas as depicted on this Condominium Plat are reserved for the use of certain Unit Owners to the exclusion of other Unit Owners. Except as otherwise designated hereon, the use of each respective patio, deck or balcony is appurtenant to the respective Unit to which such Balcony/Patio Areas are adjacent as shown hereon, subject to the rights of the Hotel Owner as described in the Declarations.

UNIT SQUARE FOOTAGE TABLE

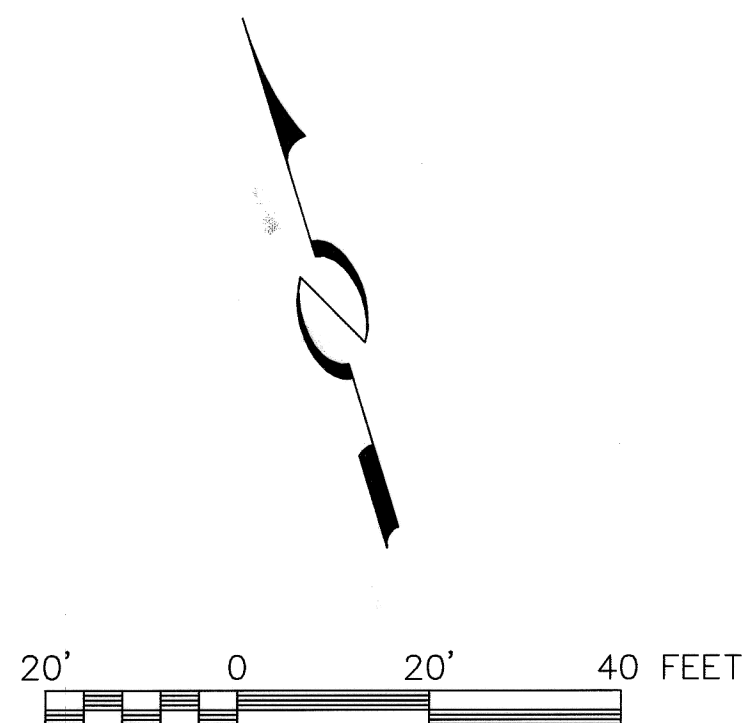
UNIT NUMBER	SQUARE FOOTAGE
1202	1,851 SF
1250	4,864 SF
1252	5,438 SF



LEVEL 8  
FLOOR LEVEL ELEVATION 8,427.0'

LEGEND

- COMMON AREA EASEMENT/ ACCESS AREA
- CONDOMINIUM UNIT
- LIMITED COMMON EASEMENT/ BALCONY & PATIO AREA
- NON-CONDOMINIUM PROPERTY/ RESTRICTED AREA



CONDOMINIUM PLAT  
**THE HOTEL & RESIDENCES AT  
EMPIRE CANYON RESORT**

A UTAH CONDOMINIUM PROJECT  
LOCATED IN THE WEST 1/2 OF SECTION 28, AND THE EAST 1/2 OF SECTION 29  
TOWNSHIP 2 SOUTH, RANGE 4 EAST SALT LAKE BASE & MERIDIAN

JOB NO: 2-1-08

RECORDED

STATE OF UTAH, COUNTY OF SUMMIT, AND FILED  
AT THE REQUEST OF

**ENTRY NO. 00890518**

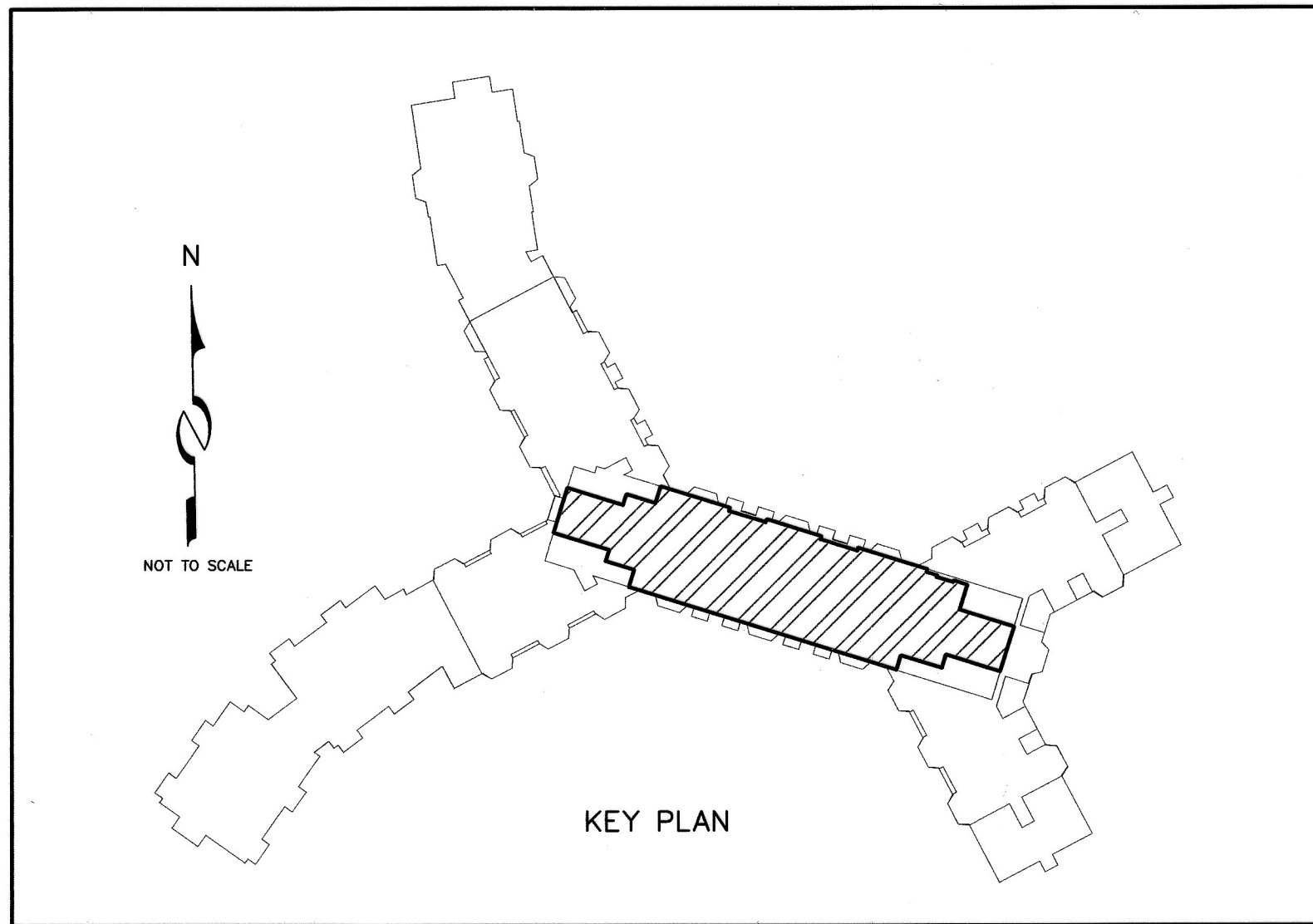
01/20/2010 09:06:42 AM B: 2017 P: 1863

PLAN, PAGE 1/1

PLAN SPRT005, SUMMIT COUNTY RECORDER

FEE: \$34.00 BY PARK CITY TITLE



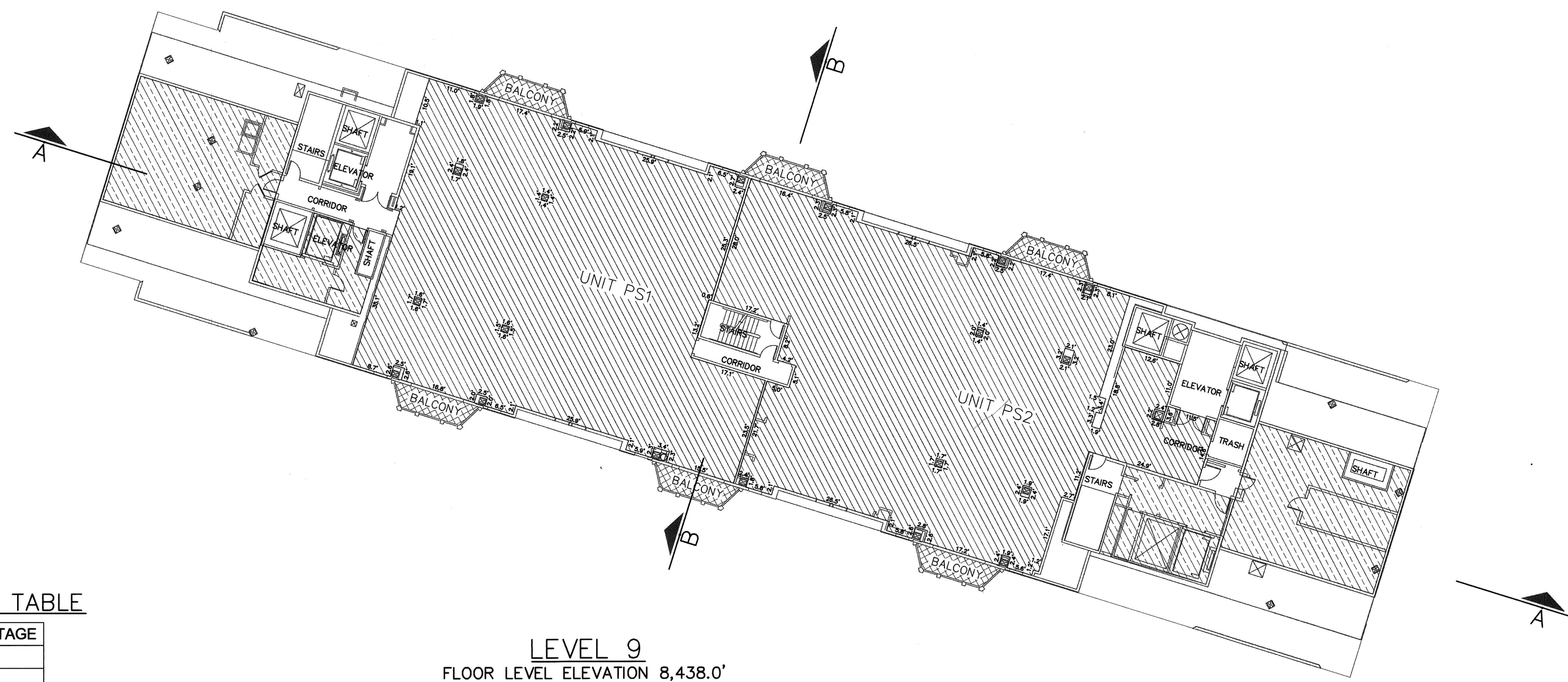


NOTES

1. The dimensions of the Units and square footage calculations shown on this Condominium Plat are based on drawings supplied by HKS Architects. The square footages shown on this plat are calculated in accordance with the Act and the Residential Declaration. Such calculation typically differs somewhat from the square footage determined by the architect or others using different methods of determining unit size. It is the intent that the private ownership area of the Units will be as constructed. Upon the completion of each Unit ("Completed Unit"), the boundaries of the Completed Unit shall be automatically adjusted to be the boundaries of such as-built Completed Unit as described in the Declarations.
2. Although columns, bearing walls and other structural elements within a Unit may not contain any crosshatching, such elements shall not be deemed Access Areas. All common structural elements are designated as Non-Hotel Use and Support Areas, as described in the Declarations. Pursuant to the Declarations, each Unit Owner and the Residential Association (in common with Hotel Owner) are granted the following non-exclusive easements, which shall be appurtenant to each Unit: Structural and Mechanical Support provided by all structural members, columns, footings and foundations which are a part of the Hotel and which are necessary for the support of any Unit.

UNIT SQUARE FOOTAGE TABLE

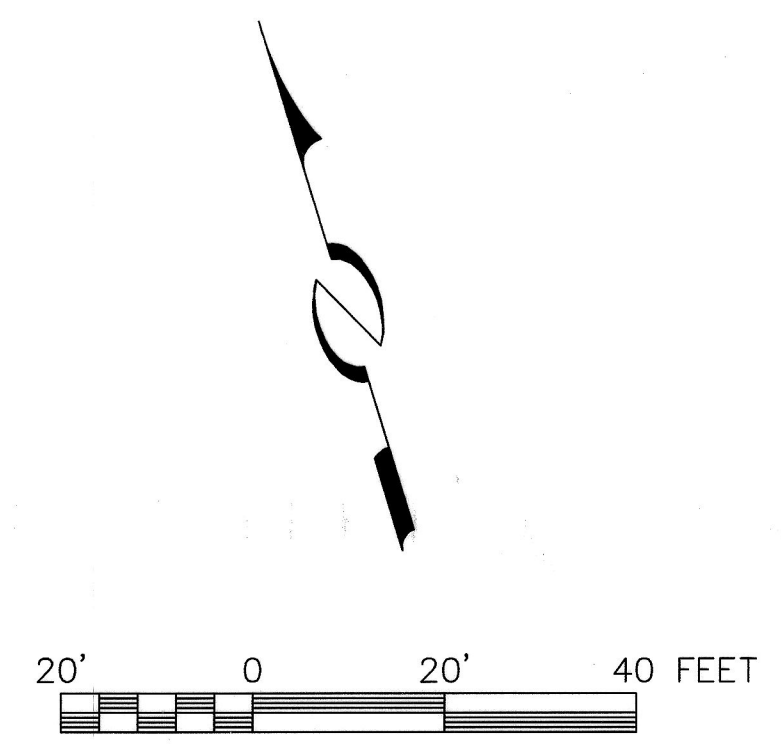
UNIT NUMBER	SQUARE FOOTAGE
PS1	4,876 SF
PS2	5,318 SF



LEVEL 9  
FLOOR LEVEL ELEVATION 8,438.0'

LEGEND

- COMMON AREA EASEMENT/ ACCESS AREA
- CONDOMINIUM UNIT
- NON-CONDOMINIUM PROPERTY/ RESTRICTED AREA



CONDOMINIUM PLAT  
**THE HOTEL & RESIDENCES AT  
EMPIRE CANYON RESORT**

A UTAH CONDOMINIUM PROJECT  
LOCATED IN THE WEST 1/2 OF SECTION 28, AND THE EAST 1/2 OF SECTION 29  
TOWNSHIP 2 SOUTH, RANGE 4 EAST SALT LAKE BASE & MERIDIAN

JOB NO: 2-1-08

RECORDED

STATE OF UTAH, COUNTY OF SUMMIT, AND FILED  
AT THE REQUEST OF

DATE **ENTRY NO. 00890518**

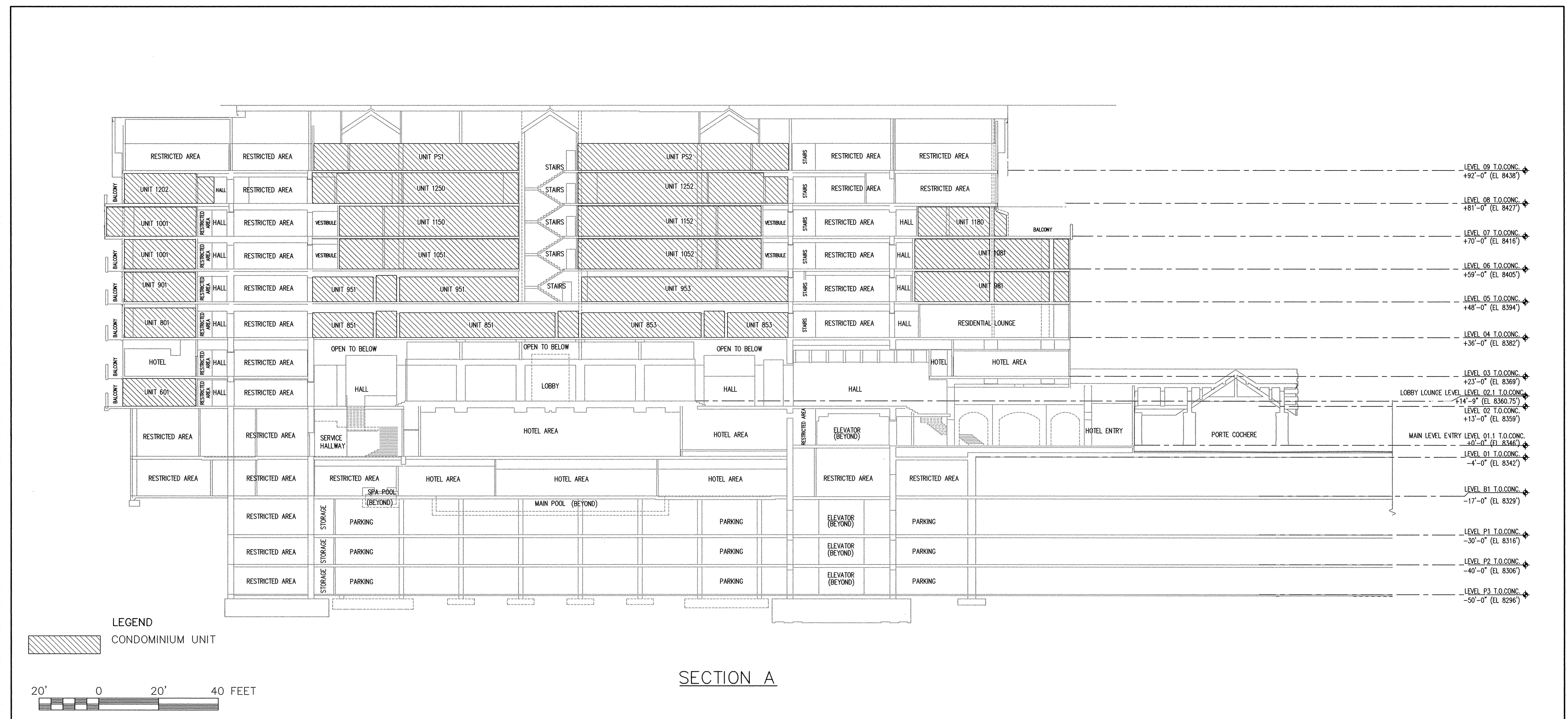
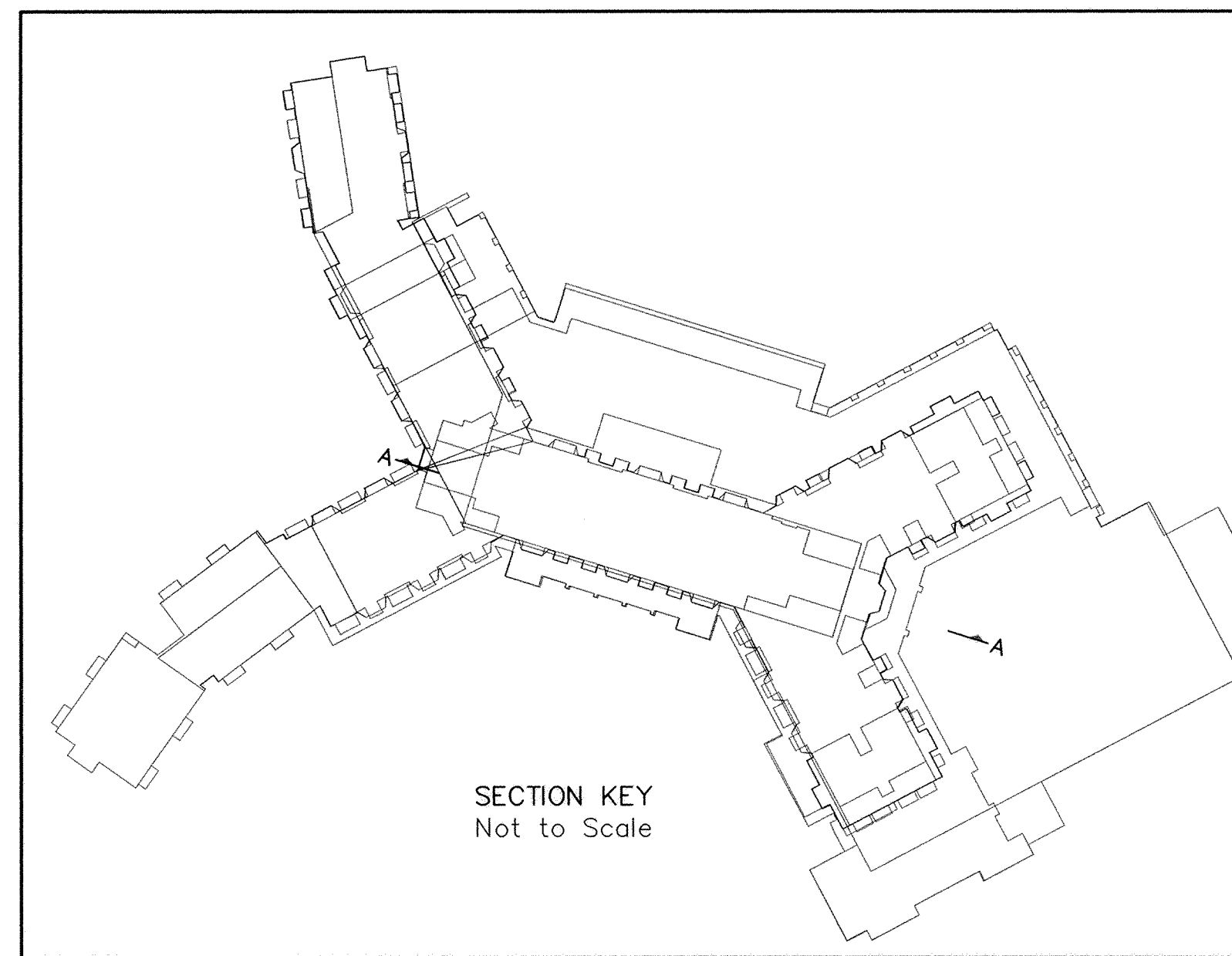
01/20/2010 09:06:42 AM B: 2017 P: 1883

PLAT PAGE 1/1  
SALT SPRINGS, SUMMIT COUNTY RECORDER  
FEE \$34.00 BY PARK CITY TITLE

9/2/09

HOTEL & RESIDENCES AT EMPIRE CANYON RESORT





CONDOMINIUM PLAT

# THE HOTEL & RESIDENCES AT EMPIRE CANYON RESORT

A UTAH CONDOMINIUM PROJECT  
 LOCATED IN THE WEST 1/4 OF SECTION 28, AND THE EAST 1/4 OF SECTION 29  
 TOWNSHIP 2 SOUTH, RANGE 4 EAST SALT LAKE BASE & MERIDIAN

JOB NO: 2-1-08

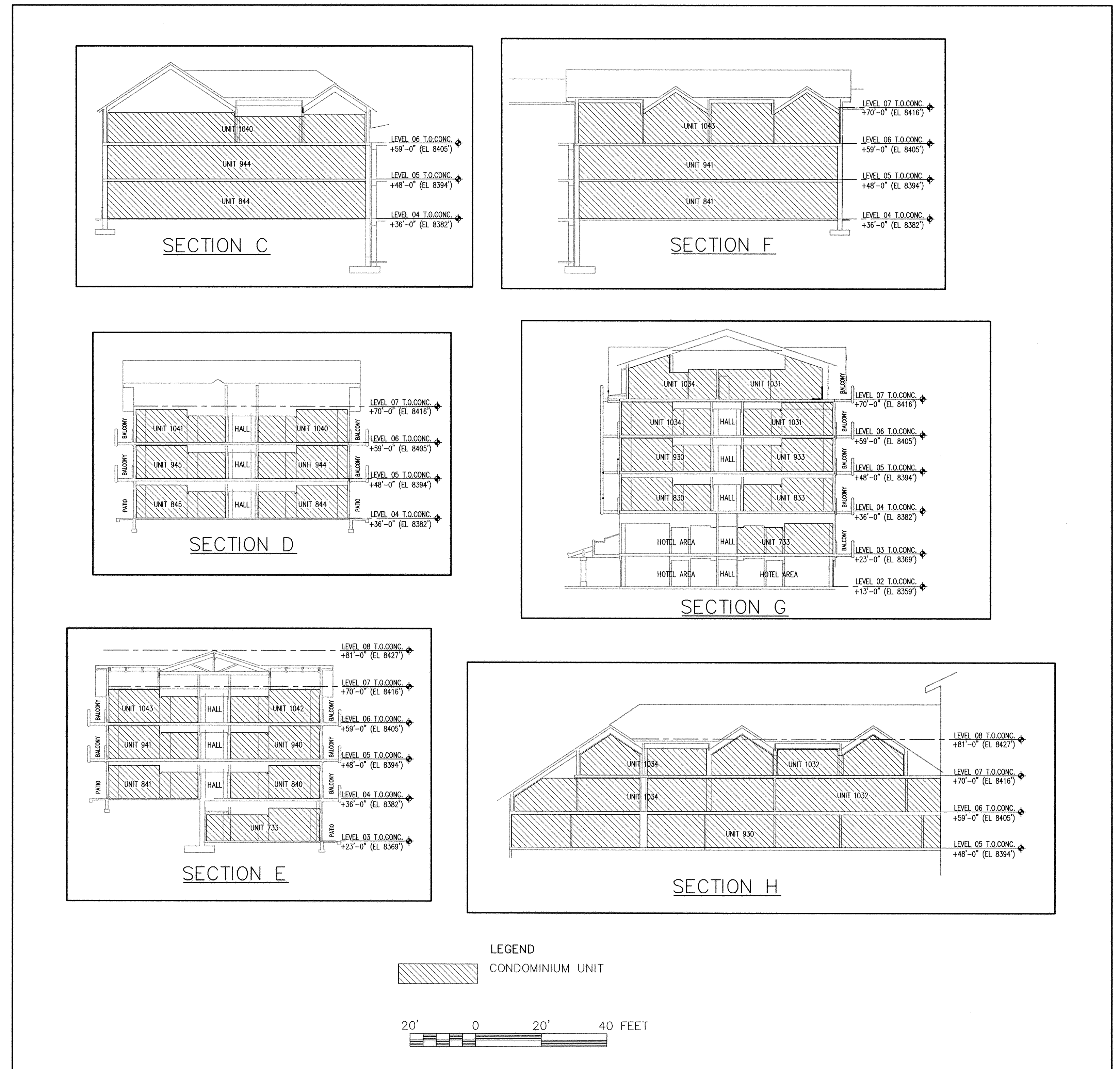
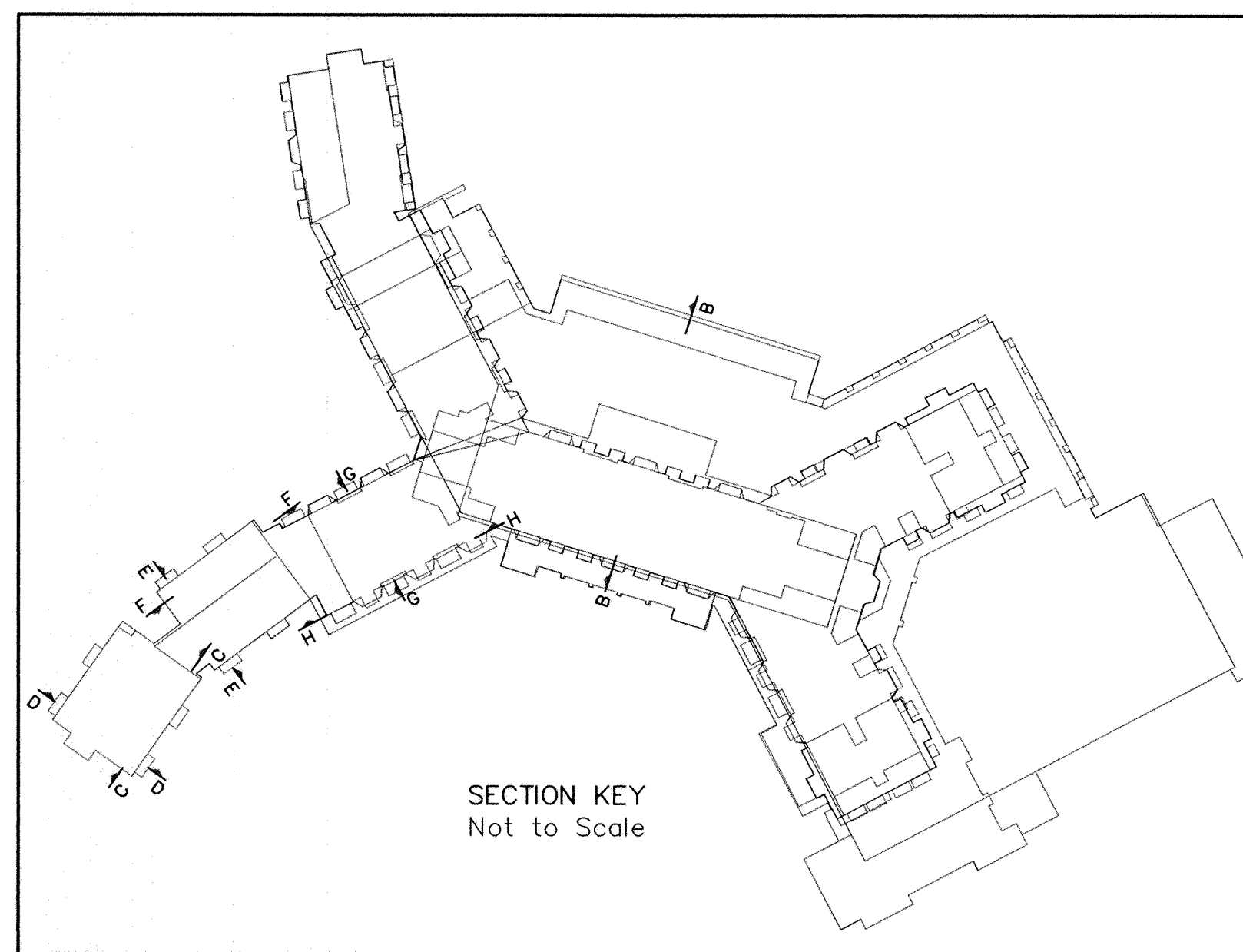
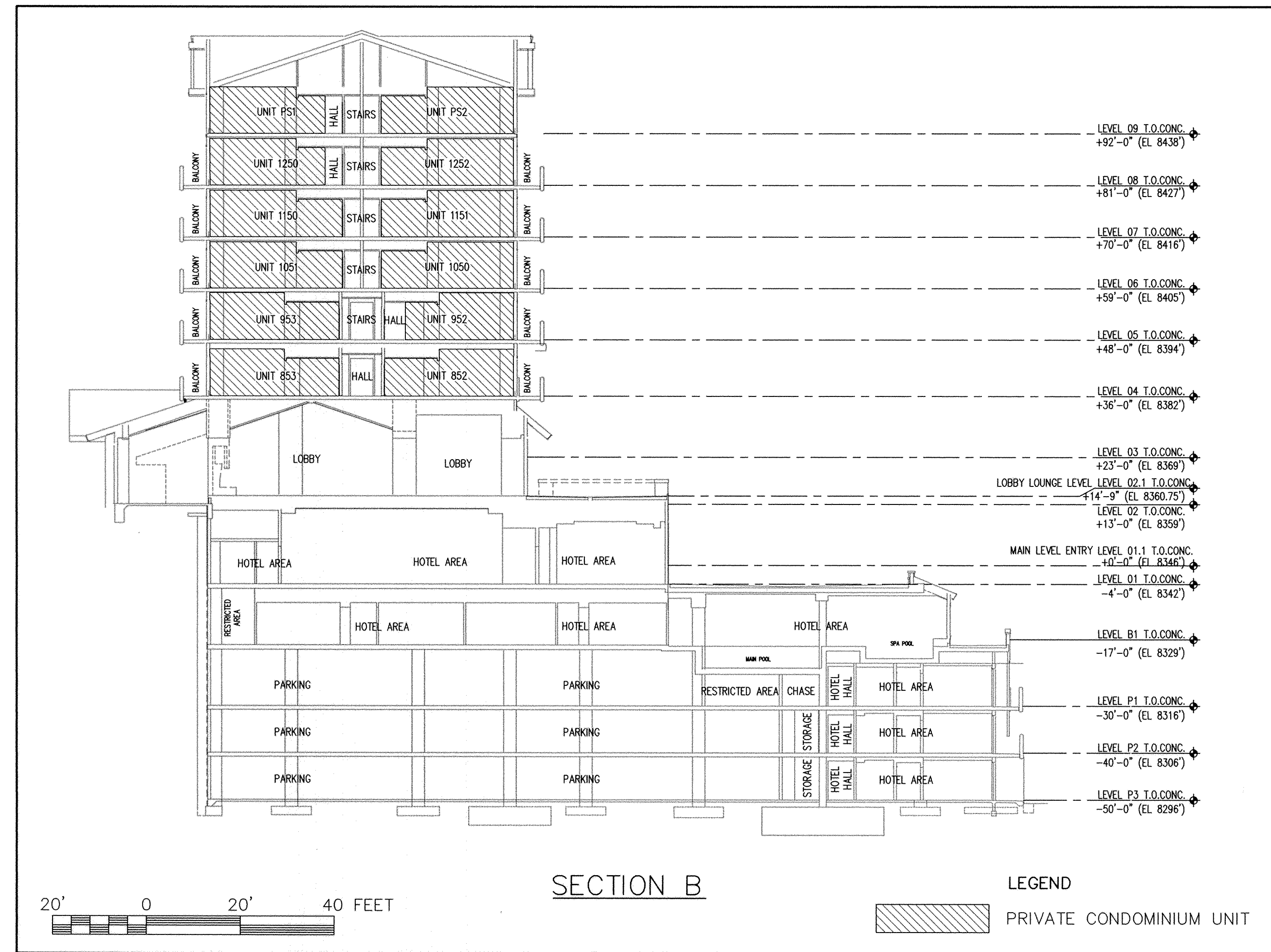
RECORDED  
 STATE OF UTAH, COUNTY OF SUMMIT, AND FILED  
 AT THE REQUEST OF

DATE **ENTRY NO. 00890518**

01/20/2010 09:06:42 AM B. 2017 P: 1883

PLAT PAGE 1/1  
 PLAN SPREADSHEET, SUMMIT COUNTY RECORDER  
 FEE: \$34.00 BY PARK CITY TITLE





CONDOMINIUM PLAT

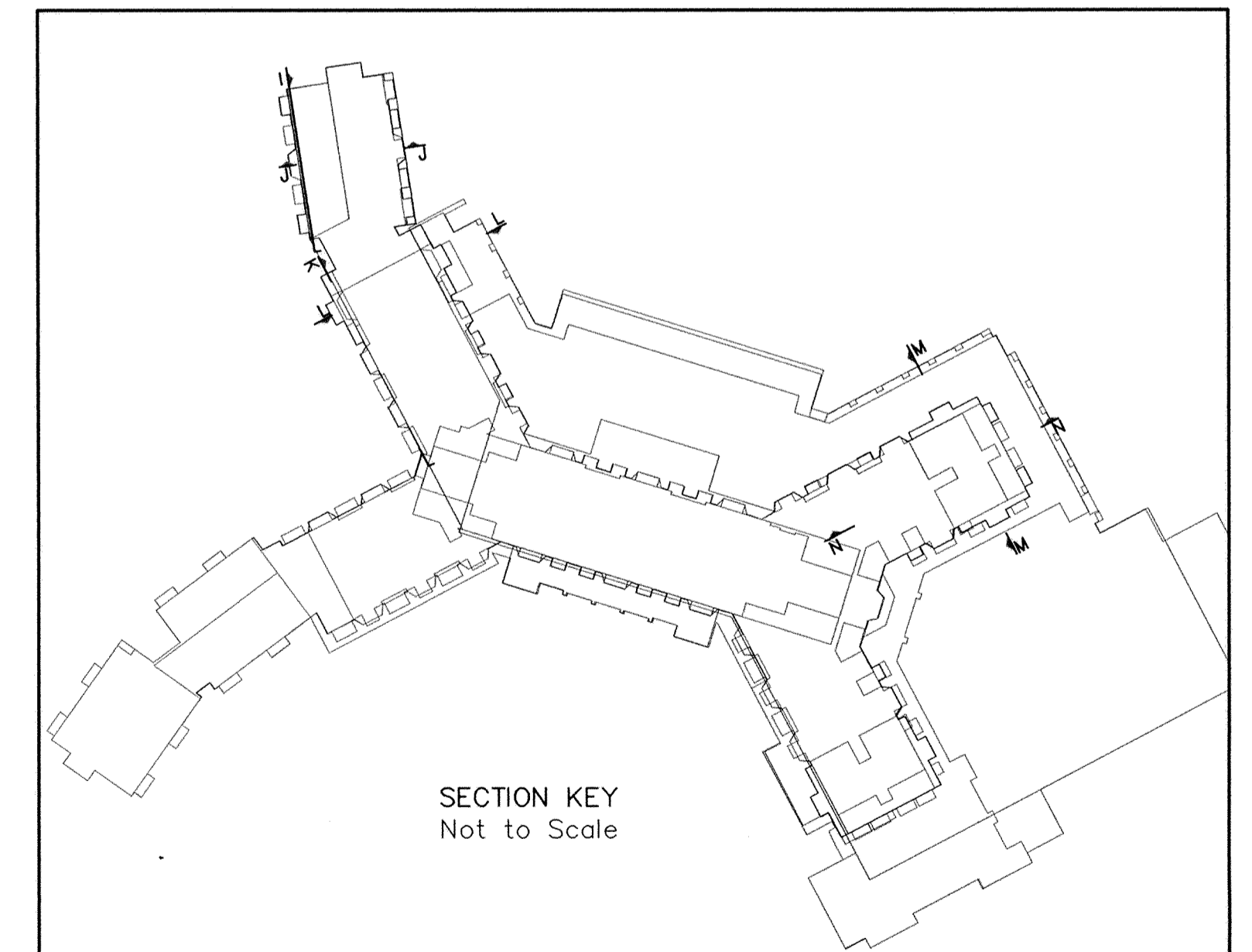
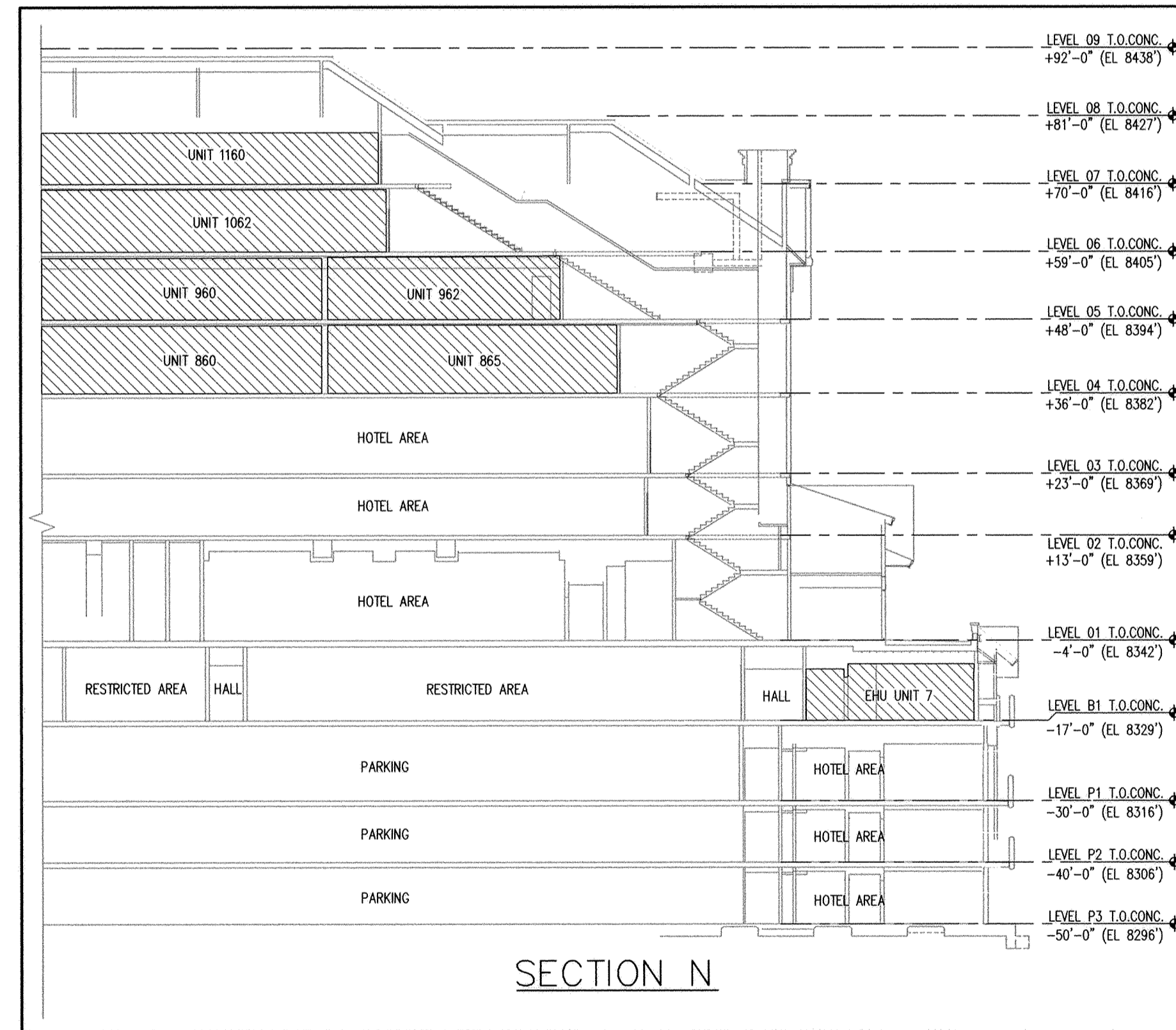
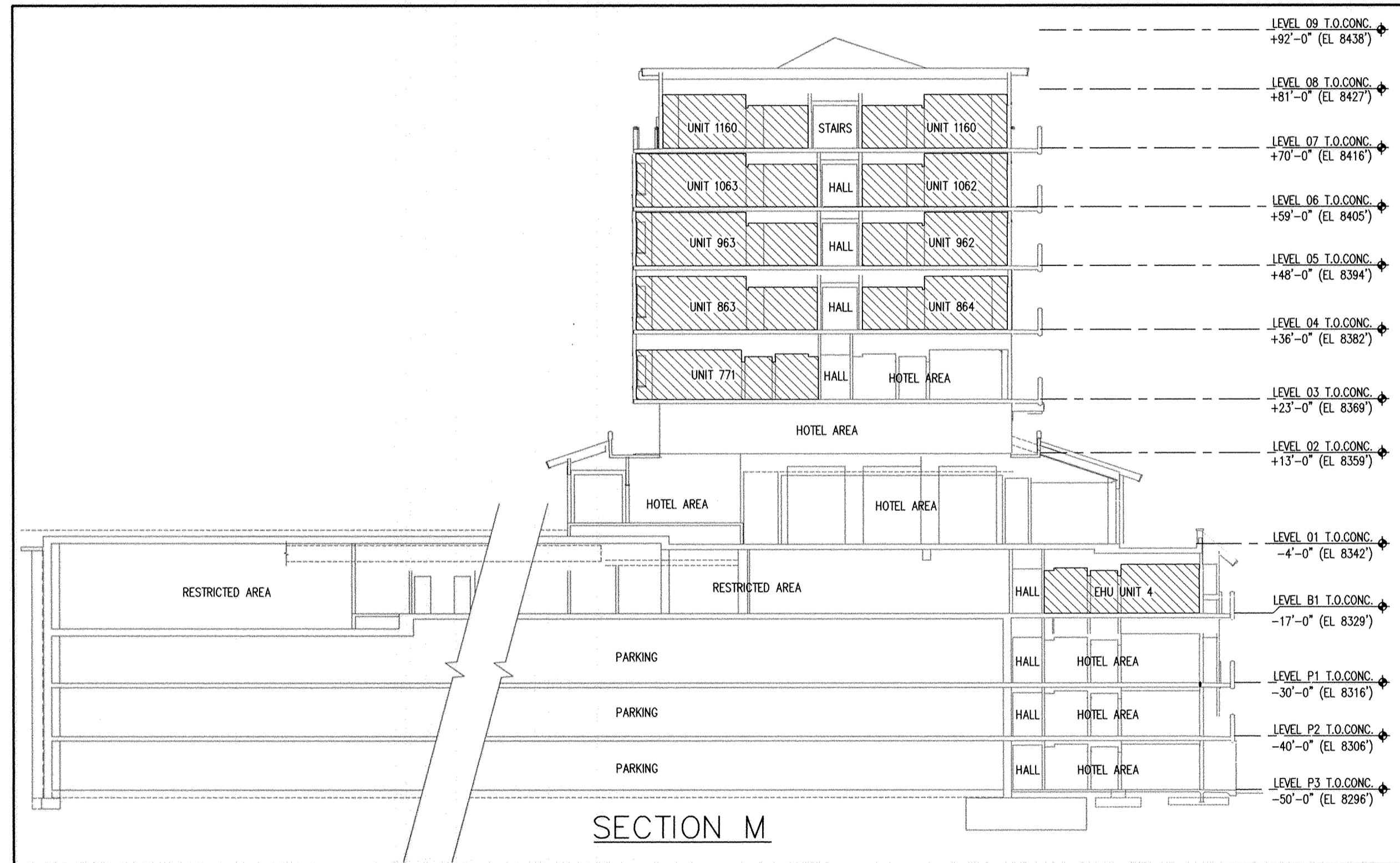
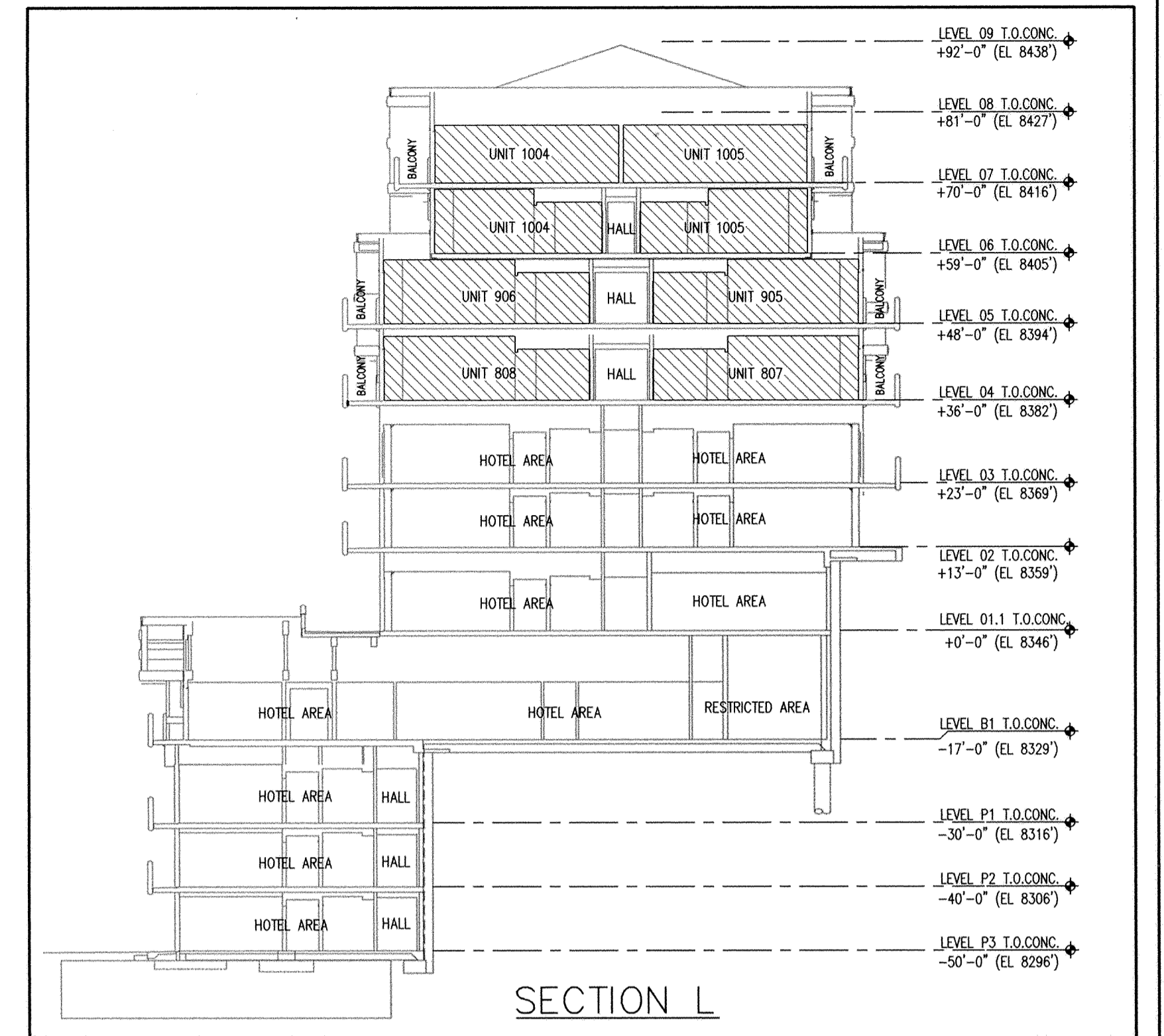
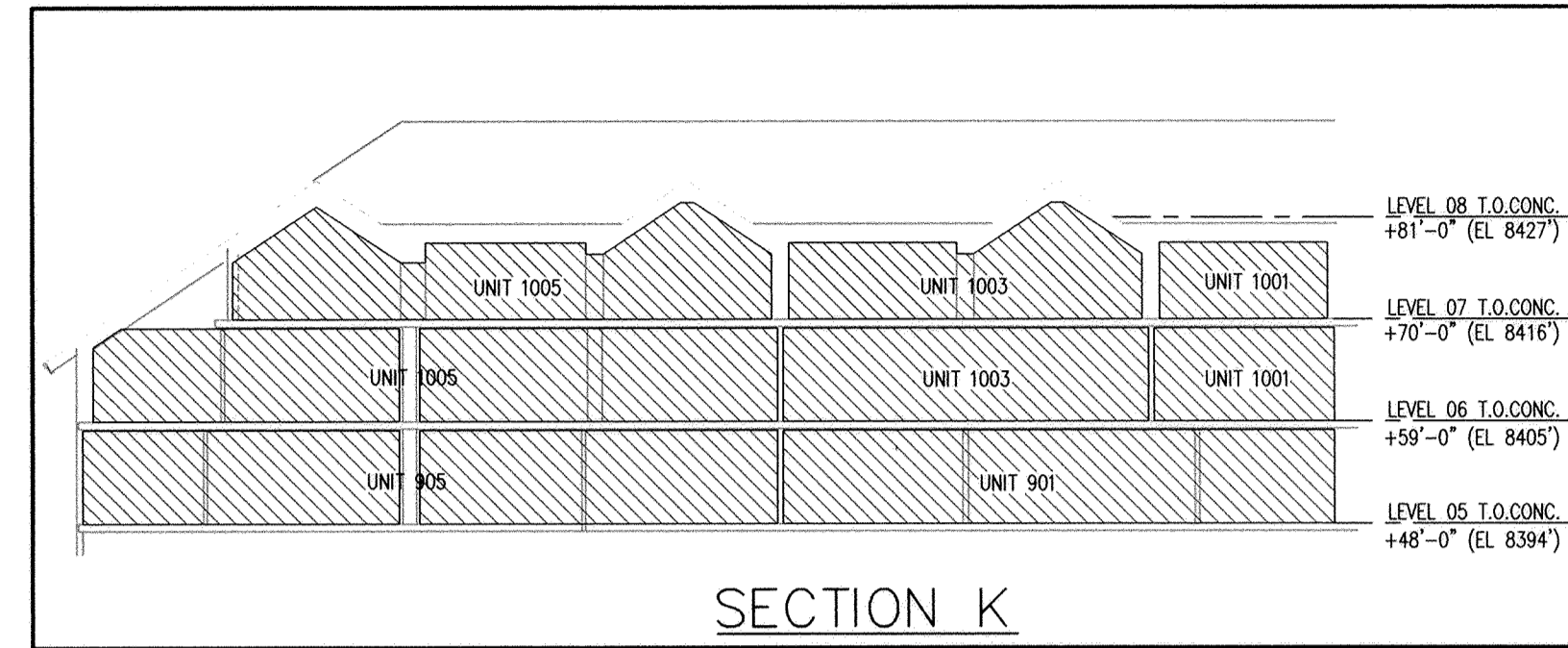
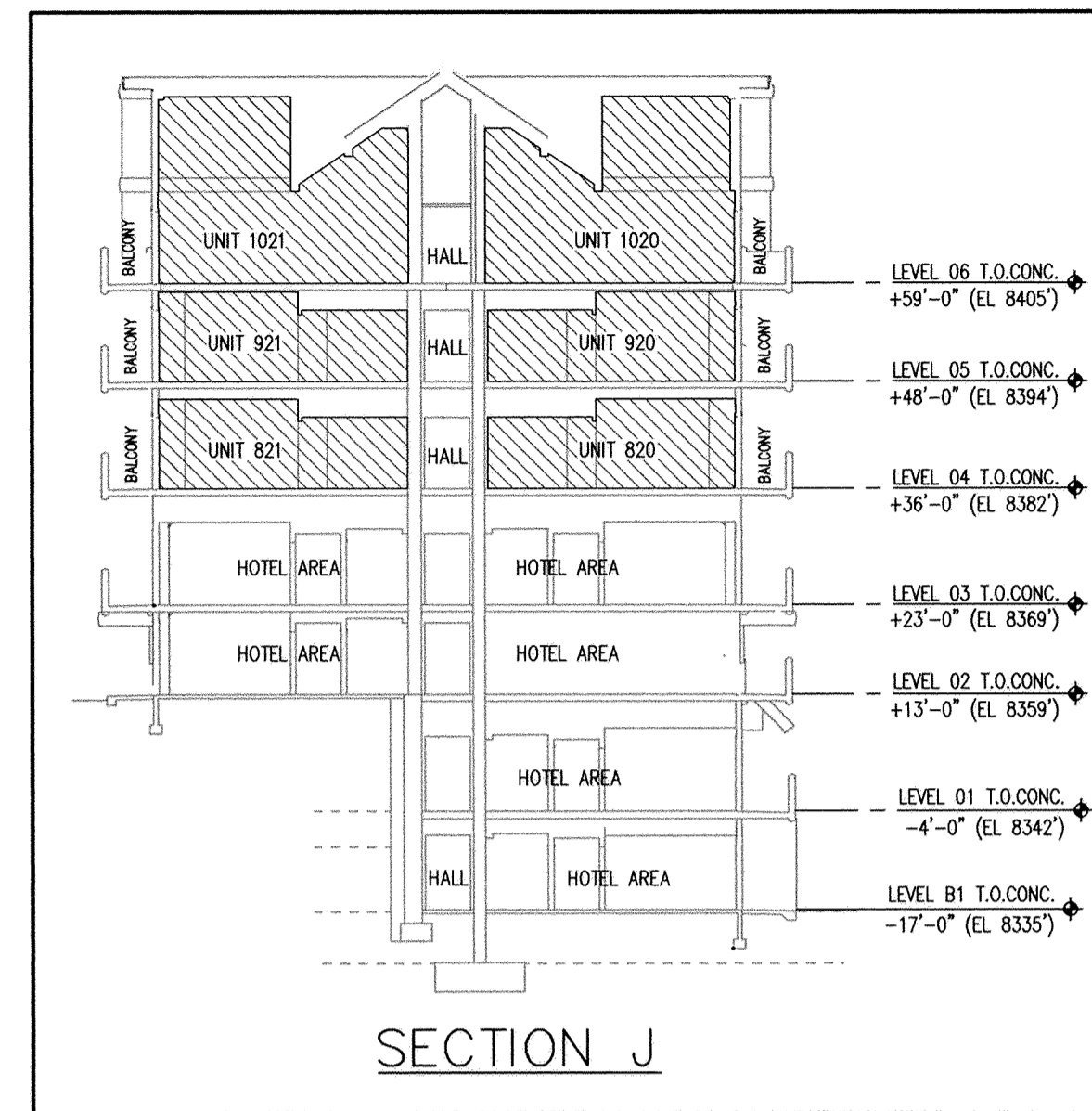
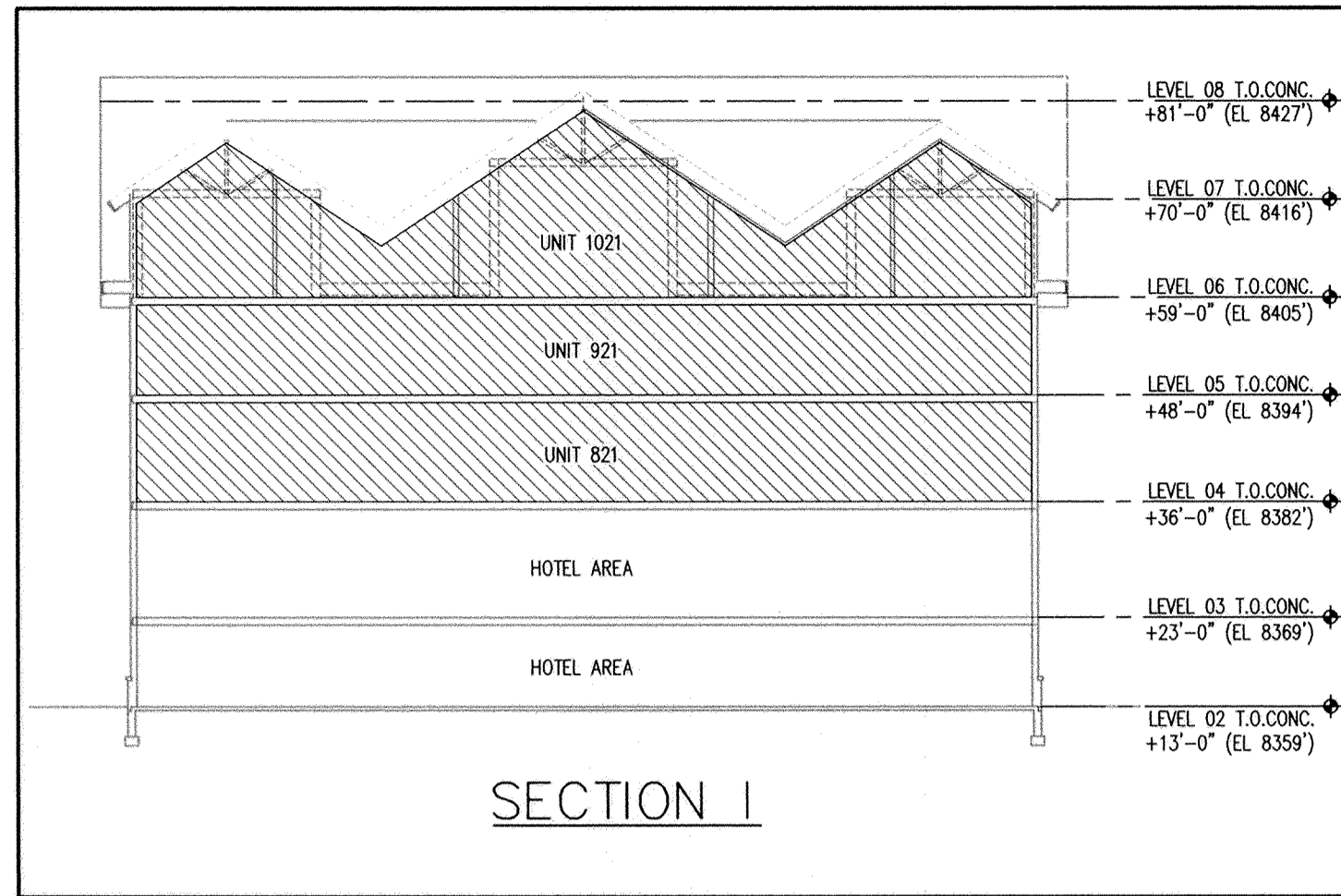
# THE HOTEL & RESIDENCES AT EMPIRE CANYON RESORT

A UTAH CONDOMINIUM PROJECT  
 LOCATED IN THE WEST 1/2 OF SECTION 28, AND THE EAST 1/2 OF SECTION 29  
 TOWNSHIP 2 SOUTH, RANGE 4 EAST SALT LAKE BASE & MERIDIAN

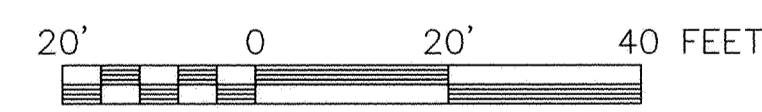
JOB NO: 2-1-08

RECORDED  
 STATE OF UTAH, COUNTY OF SUMMIT, AND FILED  
 AT THE REQUEST OF \_\_\_\_\_  
 DA ENTRY NO. **00890518**  
 01/20/2010 09:06:42 AM B: 2017 P: 1883  
 Plat PAGE 1/1  
 FILED OFFICE: SUMMIT COUNTY RECORDER  
 FEE: 634.00 BY PARK CITY TITLE





LEGEND  
 CONDOMINIUM UNIT



CONDOMINIUM PLAT

# THE HOTEL & RESIDENCES AT EMPIRE CANYON RESORT

A UTAH CONDOMINIUM PROJECT  
 LOCATED IN THE WEST 1/2 OF SECTION 28, AND THE EAST 1/2 OF SECTION 29  
 TOWNSHIP 2 SOUTH, RANGE 4 EAST SALT LAKE BASE & MERIDIAN